

IL6 antibody

Cat. No. GTX29770

Host	Goat
Clonality	Polyclonal
Isotype	IgG
Applications	WB, IHC-P, ELISA, Neutralizing/Inhibition, Sandwich ELISA
Reactivity	Rat

Package

50 µg

Applications

Application Note

*Optimal dilutions/concentrations should be determined by the researcher.

Suggested dilution	Recommended dilution
WB	0.1 - 0.2 µg/mL
IHC-P	Assay dependent
ELISA	0.5 µg/mL
Neutralizing/Inhibition	0.3 - 0.5 µg/mL
Sandwich ELISA	0.5 - 2.0 µg/mL

Note : To yield one-half maximal inhibition [ND₅₀] of the biological activity of Rat IL-6 (0.5 ng/mL)

Capture : GTX29770, Detection : Biotinylated Anti-Rat IL-6 antibody

Not tested in other applications.

Calculated MW 24 kDa. ([Note](#))

Properties

Form	Liquid
Buffer	PBS
Preservative	No preservatives
Storage	Store as concentrated solution. Centrifuge briefly prior to opening vial. For short-term storage (1-2 weeks), store at 4°C. For long-term storage, aliquot and store at -20°C or below. Avoid multiple freeze-thaw cycles.
Concentration	Batch dependent (Please refer to the vial label for the specific concentration.)
Immunogen	Produced from sera of goats pre-immunized with highly pure (>98%) recombinant Rat IL-6.
Purification	Purified by antigen-affinity chromatography
Conjugation	Unconjugated

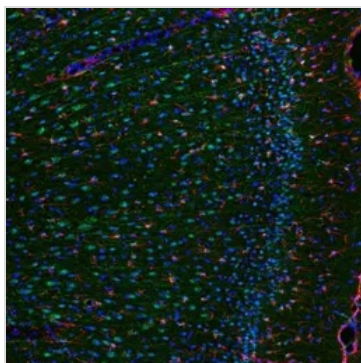


For full product information, images and publications, please visit our [website](#).

For laboratory research use only. Not for any clinical, therapeutic, or diagnostic use in humans or animals. Not for animal or human consumption.

Note

Purchasers shall not, and agree not to enable third parties to, analyze, copy, reverse engineer or otherwise attempt to determine the structure or sequence of the product.

DATA IMAGES

GTX29770 IHC-P Image

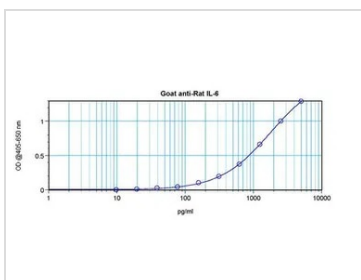
IHC-P analysis of colchicine injected rat brain (cingulate cortex) tissue using GTX29770 IL6 antibody.

Working concentration : 1 µg/ml

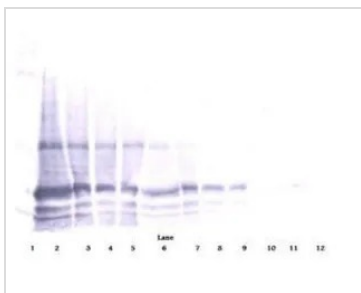
Green : Primary antibody

Blue : DAPI

Red : Actin


GTX29770 ELISA Image

ELISA analysis of rat IL-6 recombinant protein(0.2 - 0.4 ng/well) using GTX29770 IL6 antibody(capture antibody) at 0.5 - 2.0 ug/ml and Biotinylated Anti-Rat IL-6 as a detection antibody.


GTX29770 WB Image

WB analysis of sequential diluted rat IL-6 under either reducing or non-reducing conditions using GTX29770 IL6 antibody.

Working concentration : 0.1 - 0.2 ug/ml



For full product information, images and publications, please visit our [website](https://www.genetex.com).