

GTX300004

Loading Control Antibody Panel

Product Content

| Cat No | Product Name | Reactivity | Applications | Package |
|--------------|-------------------------------------|--|---------------------------|---------|
| GTX101279 | beta Tubulin antibody | Human, Mouse, Rat, Zebrafish, Hamster | WB, ICC/IF, IHC-P, IHC-Wm | 25 µl |
| GTX213110-01 | Goat Anti-Rabbit IgG antibody (HRP) | Rabbit | WB, IHC-P, ELISA | 100 µl |
| GTX636804 | PARP antibody [HL1364] | Human, Mouse | WB, ICC/IF, IHC-P | 25 µl |
| GTX637675 | beta Actin antibody [HL1926] | Human, Mouse, Rat, Zebrafish, Rabbit, Drosophila, Cat, Dog, African green monkey | WB, ICC/IF, IHC-P | 25 µl |
| GTX637858 | PCNA antibody [HL1965] | Human, Mouse, Rat, Zebrafish, Cat, Dog | WB, IHC-P, IHC-Fr | 25 µl |

Note

For In vitro laboratory use only. Not for any clinical, therapeutic, or diagnostic use in humans or animals. Not for animal or human consumption.



For full product information, images and publications, please visit our [website](#).

beta Tubulin antibody

Cat. No. GTX101279

| | |
|---------------------|---------------------------------------|
| Host | Rabbit |
| Clonality | Polyclonal |
| Isotype | IgG |
| Applications | WB, ICC/IF, IHC-P, IHC-Wm |
| Reactivity | Human, Mouse, Rat, Zebrafish, Hamster |

References (43)

★★★★☆ Review (2)

Package

100 µl, 25 µl

Applications

Application Note

*Optimal dilutions/concentrations should be determined by the researcher.

| Suggested dilution | Recommended dilution |
|--------------------|----------------------|
| WB | 1:500-1:20000 |
| ICC/IF | 1:100-1:1000 |
| IHC-P | 1:100-1:1000 |
| IHC-Wm | Assay dependent |

Not tested in other applications.

Properties

| | |
|----------------------|--|
| Form | Liquid |
| Buffer | PBS, 20% Glycerol |
| Preservative | 0.025% ProClin 300 |
| Storage | Store as concentrated solution. Centrifuge briefly prior to opening vial. For short-term storage (1-2 weeks), store at 4°C. For long-term storage, aliquot and store at -20°C or below. Avoid multiple freeze-thaw cycles. |
| Concentration | 0.8 mg/ml (Please refer to the vial label for the specific concentration.) |
| Immunogen | Recombinant protein encompassing a sequence within the center region of human beta Tubulin. The exact sequence is proprietary. |
| Purification | Purified by antigen-affinity chromatography. |
| Conjugation | Unconjugated |

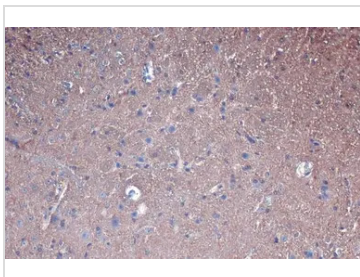
Note

For laboratory research use only. Not for any clinical, therapeutic, or diagnostic use in humans or animals. Not for animal or human consumption.

Purchasers shall not, and agree not to enable third parties to, analyze, copy, reverse engineer or otherwise attempt to determine the structure or sequence of the product.



For full product information, images and publications, please visit our [website](#).

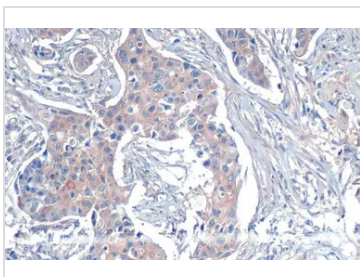
DATA IMAGES

GTX101279 IHC-P Image

beta Tubulin antibody detects beta Tubulin protein at cytoplasm by immunohistochemical analysis.

Sample: Paraffin-embedded mouse spinal cord.

beta Tubulin stained by beta Tubulin antibody (GTX101279) diluted at 1:500.

Antigen Retrieval: Citrate buffer, pH 6.0, 15 min

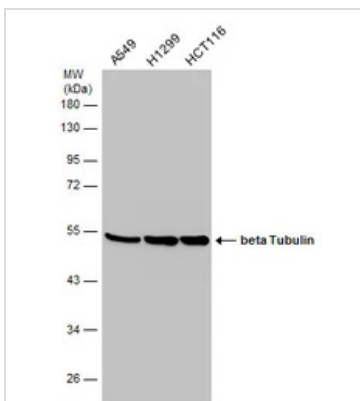

GTX101279 IHC-P Image

beta Tubulin antibody detects beta Tubulin protein at cytoplasm by immunohistochemical analysis.

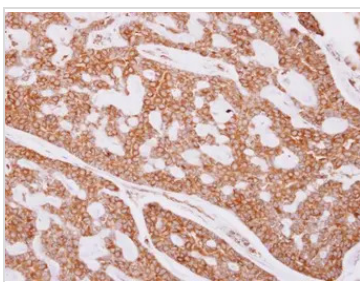
Sample: Paraffin-embedded human breast carcinoma.

beta Tubulin stained by beta Tubulin antibody (GTX101279) diluted at 1:500.

Antigen Retrieval: Citrate buffer, pH 6.0, 15 min


GTX101279 WB Image

Various whole cell extracts (30 µg) were separated by 10% SDS-PAGE, and the membrane was blotted with beta Tubulin antibody (GTX101279) diluted at 1:3000. The HRP-conjugated anti-rabbit IgG antibody (GTX213110-01) was used to detect the primary antibody.


GTX101279 IHC-P Image

beta Tubulin antibody detects beta Tubulin protein at cytoplasm on human breast cancer by immunohistochemical analysis.

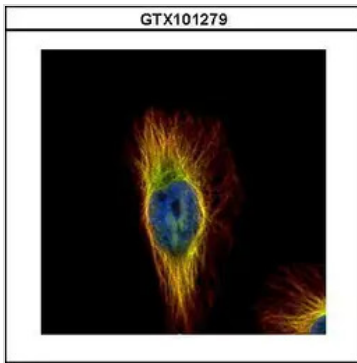
Sample: Paraffin-embedded breast cancer.

beta Tubulin antibody (GTX101279) dilution: 1:500.

Antigen Retrieval: Trilogy™ (EDTA based, pH 8.0) buffer, 15min

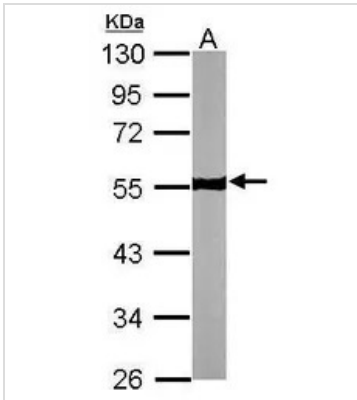


For full product information, images and publications, please visit our [website](https://www.genetex.com).



GTX101279 ICC/IF Image

Confocal immunofluorescence analysis (Olympus FV10i) of paraformaldehyde-fixed HeLa, using beta Tubulin(GTX101279) antibody (Green) at 1:500 dilution. Alpha-tubulin filaments were labeled with GTX11304 (Red) at 1:2000.



GTX101279 WB Image

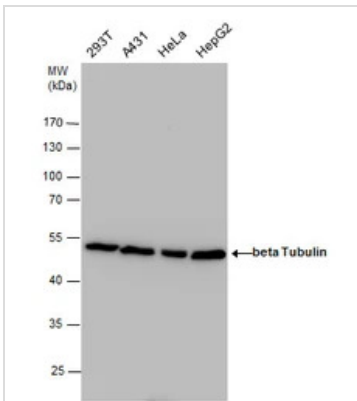
Sample (30 µg of whole cell lysate)

A: NIH-3T3

10% SDS PAGE

GTX101279 diluted at 1:5000

The HRP-conjugated anti-rabbit IgG antibody (GTX213110-01) was used to detect the primary antibody.



GTX101279 WB Image

beta Tubulin antibody detects beta Tubulin protein by western blot analysis. Various whole cell extracts (30 µg) were separated by 10% SDS-PAGE, and the membrane was blotted with beta Tubulin antibody (GTX101279) diluted at a dilution of 1:3000. The HRP-conjugated anti-rabbit IgG antibody (GTX213110-01) was used to detect the primary antibody.

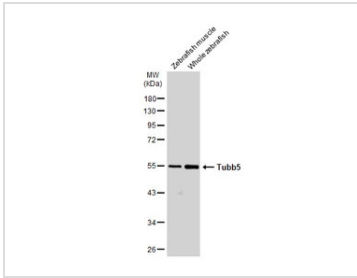


GTX101279 IHC-P Image

Immunohistochemical analysis of paraffin-embedded zebrafish tissue, using beta Tubulin antibody (GTX101279) at 1:300 dilution.

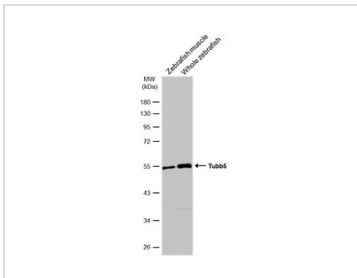


For full product information, images and publications, please visit our [website](https://www.genetex.com).



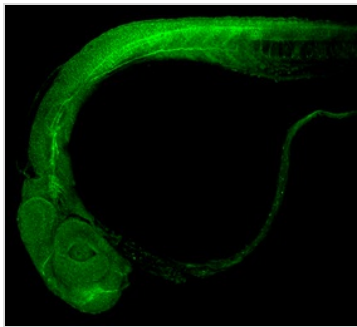
GTx101279 WB Image

Various tissue extracts (30 µg) were separated by 10% SDS-PAGE, and the membrane was blotted with beta Tubulin antibody (GTx101279) diluted at 1:1000. The HRP-conjugated anti-rabbit IgG antibody (GTx213110-01) was used to detect the primary antibody.



GTx101279 WB Image

Various tissue extracts (30 µg) were separated by 10% SDS-PAGE, and the membrane was blotted with beta Tubulin antibody (GTx101279) diluted at 1:1000. The HRP-conjugated anti-rabbit IgG antibody (GTx213110-01) was used to detect the primary antibody.

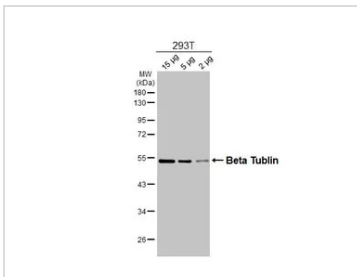


GTx101279 IHC-Wm Image

beta Tubulin antibody detects beta Tubulin protein on zebrafish by whole mount immunohistochemical analysis.

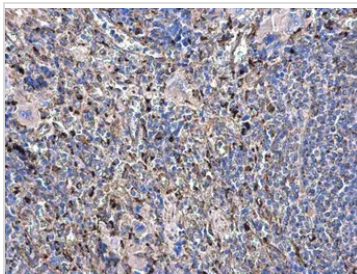
Sample: 1 day-post-fertilization zebrafish embryo.

beta Tubulin antibody (GTx101279) dilution: 1:100.



GTx101279 WB Image

Various whole cell extracts were separated by 10% SDS-PAGE, and the membrane was blotted with beta Tubulin antibody (GTx101279) diluted at 1:3000. The HRP-conjugated anti-rabbit IgG antibody (GTx213110-01) was used to detect the primary antibody.



GTx101279 IHC-P Image

beta Tubulin antibody detects beta Tubulin protein at cytoplasm in rat spleen by immunohistochemical analysis.

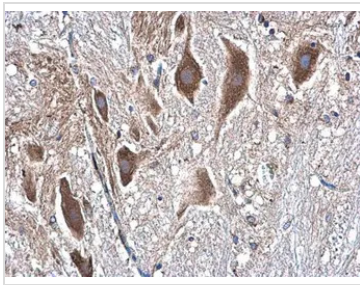
Sample: Paraffin-embedded rat spleen.

beta Tubulin antibody (GTx101279) diluted at 1:500.

Antigen Retrieval: Citrate buffer, pH 6.0, 15 min



For full product information, images and publications, please visit our [website](https://www.genetex.com).

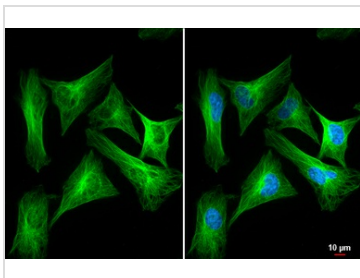

GTK101279 IHC-P Image

beta Tubulin antibody detects beta Tubulin protein at cytoplasm in rat spinal cord by immunohistochemical analysis.

Sample: Paraffin-embedded rat spinal cord.

beta Tubulin antibody (GTK101279) diluted at 1:500.

Antigen Retrieval: Citrate buffer, pH 6.0, 15 min

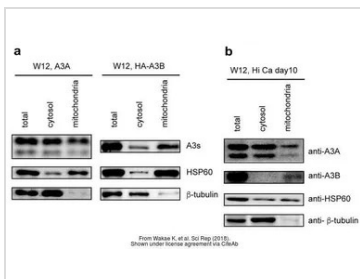

GTK101279 ICC/IF Image

beta Tubulin antibody detects beta Tubulin protein by immunofluorescent analysis.

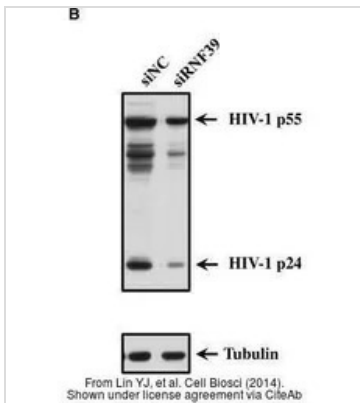
Sample: HeLa cells were fixed in 4% paraformaldehyde at RT for 15 min.

Green: beta Tubulin stained by beta Tubulin antibody (GTK101279) diluted at 1:500.

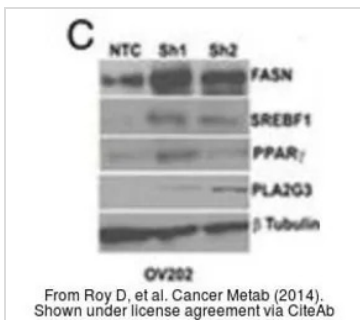
Blue: Fluoroshield with DAPI (GTK30920).


GTK101279 WB Image

The data was published in the journal Sci Rep in 2018. [PMID: 29950685](#)


GTK101279 WB Image

The data was published in the journal Cell Biosci in 2014. [PMID: 25126410](#)


GTK101279 WB Image

The data was published in the journal Cancer Metab in 2014. [PMID: 25225614](#)



For full product information, images and publications, please visit our [website](#).

Goat Anti-Rabbit IgG antibody (HRP)

Cat. No. GTX213110-01

| | |
|--------------|------------------|
| Host | Goat |
| Clonality | Polyclonal |
| Isotype | IgG |
| Applications | WB, IHC-P, ELISA |
| Reactivity | Rabbit |

References (584)

Package

1 ml

Applications

Application Note

*Optimal dilutions/concentrations should be determined by the researcher.

| Suggested dilution | Recommended dilution |
|--------------------|----------------------|
| WB | 1:5000-1:20000 |
| IHC-P | 1:100-1:1000 |
| ELISA | 1:5000-1:20000 |

Not tested in other applications.

Properties

| | |
|---------------|--|
| Form | Liquid |
| Buffer | 0.05M Tris, 0.15M NaCl, 1%BSA |
| Preservative | 0.025% ProClin 300 |
| Storage | Store as concentrated solution. Centrifuge briefly prior to opening vial. For short-term storage (1-2 weeks), store at 4°C. For long-term storage, aliquot and store at -20°C or below. Avoid multiple freeze-thaw cycles. |
| Concentration | 0.53 mg/ml (Please refer to the vial label for the specific concentration.) |
| Immunogen | Highly purified whole rabbit IgG |
| Purification | Purified by antigen-affinity chromatography. |
| Conjugation | Horseradish peroxidase(HRP) |

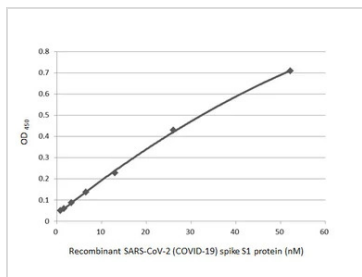
Note

For laboratory research use only. Not for any clinical, therapeutic, or diagnostic use in humans or animals. Not for animal or human consumption.

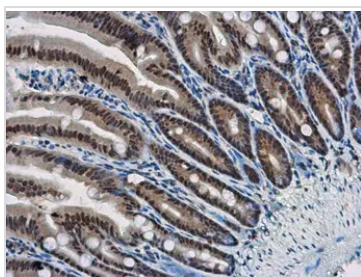
Purchasers shall not, and agree not to enable third parties to, analyze, copy, reverse engineer or otherwise attempt to determine the structure or sequence of the product.



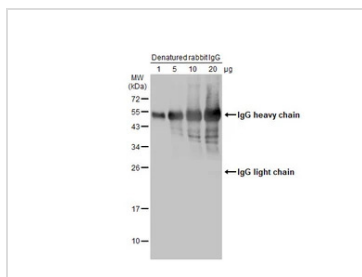
For full product information, images and publications, please visit our [website](#).

DATA IMAGES

GTx213110-01 ELISA Image

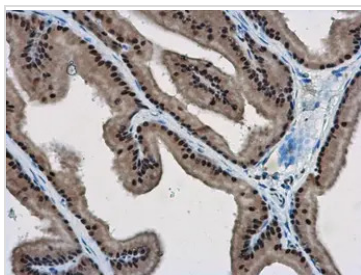
Indirect ELISA analysis performed by coating plate with recombinant SARS-CoV-2 (COVID-19) Spike S1 protein, His tag (active) (GTx135817-pro) (52.15-0.81 nM). Coated protein was probed with SARS-CoV-2 (COVID-19) Spike S1 antibody [HL134] (GTx635671) (1 µg/mL). Goat anti-rabbit IgG antibody (HRP) (GTx213110-01) (1:10000) was used to detect bound primary antibody.


GTx213110-01 IHC-P Image

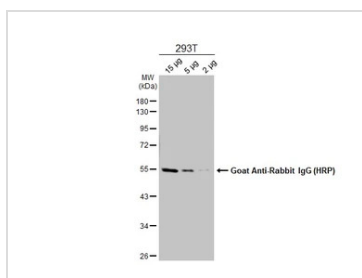
WBP11 antibody detects WBP11 protein at nucleus in mouse intestine by immunohistochemical analysis.
Sample: Paraffin-embedded mouse intestine.
WBP11 antibody (GTx118654) diluted at 1:500.
The signal was developed by Rabbit IgG antibody (HRP) (GTx213110-01)
Antigen Retrieval: Citrate buffer, pH 6.0, 15 min


GTx213110-01 WB Image

Various amounts of denatured rabbit IgG protein were separated by 12% SDS-PAGE, and the membrane was blotted with HRP-conjugated anti-rabbit IgG antibody (GTx213110-01) diluted at 1:5000.


GTx213110-01 IHC-P Image

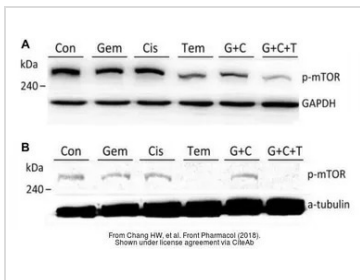
WBP11 antibody detects WBP11 protein at nucleus in rat prostate by immunohistochemical analysis.
Sample: Paraffin-embedded rat prostate.
WBP11 antibody (GTx118654) diluted at 1:500.
The signal was developed by Rabbit IgG antibody (HRP) (GTx213110-01).
Antigen Retrieval: Citrate buffer, pH 6.0, 15 min


GTx213110-01 WB Image

Various whole cell extracts were separated by 10% SDS-PAGE, and the membrane was blotted with alpha Tubulin antibody (GTx112141) diluted at 1:10000. The HRP-conjugated anti-rabbit IgG antibody (GTx213110-01) was used to detect the primary antibody.

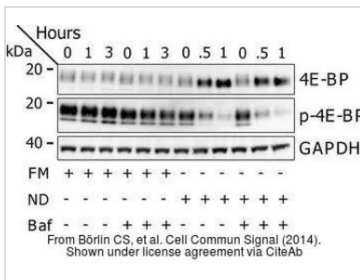


For full product information, images and publications, please visit our [website](https://www.genetex.com).



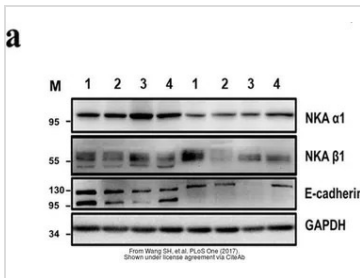
GTx213110-01 WB Image

The data was published in the journal Front Pharmacol in 2018. [PMID: 30087612](https://pubmed.ncbi.nlm.nih.gov/30087612/)



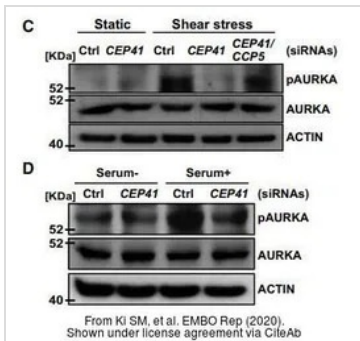
GTx213110-01 WB Image

The data was published in the journal Cell Commun Signal in 2014. [PMID: 25214434](https://pubmed.ncbi.nlm.nih.gov/25214434/)



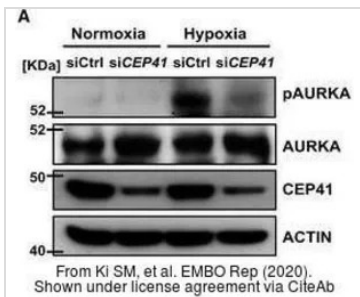
GTx213110-01 WB Image

The data was published in the journal PLoS One in 2017. [PMID: 28832634](https://pubmed.ncbi.nlm.nih.gov/28832634/)



GTx213110-01 WB Image

The data was published in the journal EMBO Rep in 2020. [PMID: 31885126](https://pubmed.ncbi.nlm.nih.gov/31885126/)

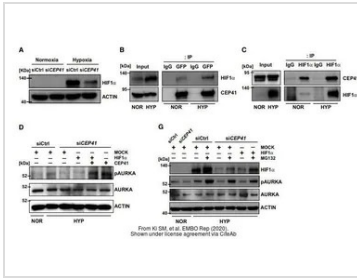


GTx213110-01 WB Image

The data was published in the journal EMBO Rep in 2020. [PMID: 31885126](https://pubmed.ncbi.nlm.nih.gov/31885126/)

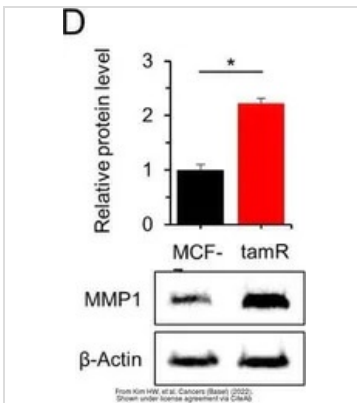


For full product information, images and publications, please visit our [website](https://www.genetex.com).



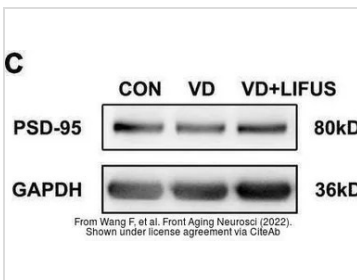
GTx213110-01 WB Image

The data was published in the journal EMBO Rep in 2020. [PMID: 31885126](#)



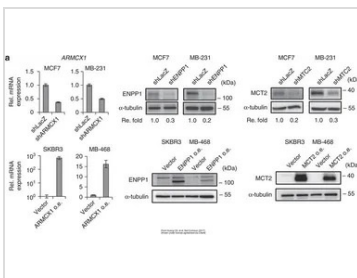
GTx213110-01 WB Image

The data was published in the 2022 in Cancers (Basel). [PMID: 35267540](#)



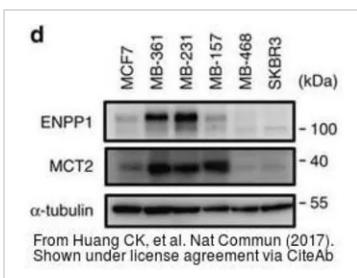
GTx213110-01 WB Image

The data was published in the 2022 in Front Aging Neurosci. [PMID: 35264943](#)



GTx213110-01 WB Image

The data was published in the 2017 in Nat Commun. [PMID: 28281525](#)

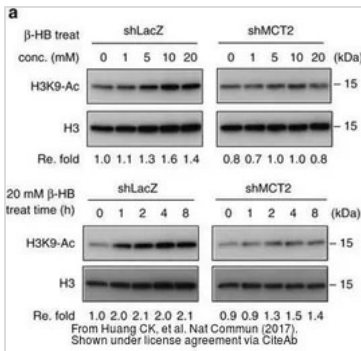


GTx213110-01 WB Image

The data was published in the 2017 in Nat Commun. [PMID: 28281525](#)

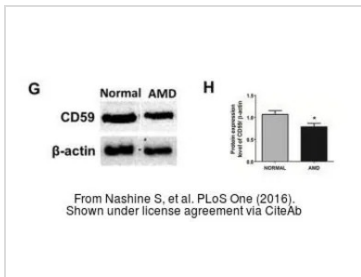


For full product information, images and publications, please visit our [website](#).



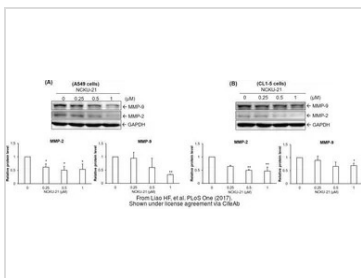
GTx213110-01 WB Image

The data was published in the 2017 in Nat Commun. [PMID: 28281525](#)



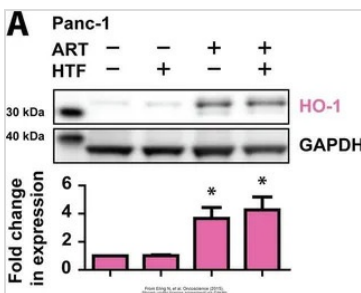
GTx213110-01 WB Image

The data was published in the 2016 in PLoS One. [PMID: 27486856](#)



GTx213110-01 WB Image

The data was published in the journal PLoS One in 2017. [PMID: 28945763](#)



GTx213110-01 WB Image

The data was published in the journal Oncotarget in 2015. [PMID: 26097885](#)



For full product information, images and publications, please visit our [website](#).

PARP antibody [HL1364]

Cat. No. GTX636804

| | |
|---------------------|-------------------|
| Host | Rabbit |
| Clonality | Monoclonal |
| Isotype | IgG |
| Applications | WB, ICC/IF, IHC-P |
| Reactivity | Human, Mouse |

Package
100 µl, 25 µl

Applications

Application Note

*Optimal dilutions/concentrations should be determined by the researcher.

| Suggested dilution | Recommended dilution |
|--------------------|----------------------|
| WB | 1:5000-1:20000 |
| ICC/IF | Assay dependent |
| IHC-P | Assay dependent |

Not tested in other applications.

Observed MW (kDa) 89 (cleaved form), 116 (Pro-form) kDa.

Product Note This antibody is specific for human PARP1 protein, and it does not cross react with human PARP2 and PARP3 protein.

Properties

| | |
|----------------------|--|
| Form | Liquid |
| Buffer | PBS |
| Preservative | No preservatives |
| Storage | Store as concentrated solution. Centrifuge briefly prior to opening vial. For short-term storage (1-2 weeks), store at 4°C. For long-term storage, aliquot and store at -20°C or below. Avoid multiple freeze-thaw cycles. |
| Concentration | 1.5 mg/ml (Please refer to the vial label for the specific concentration.) |
| Immunogen | Recombinant protein encompassing a sequence within the center region of Human PARP. The exact sequence is proprietary. |
| Purification | Affinity purified by Protein A. |
| Conjugation | Unconjugated |

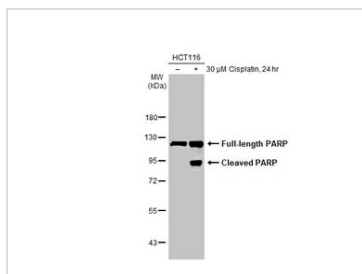


For full product information, images and publications, please visit our [website](#).

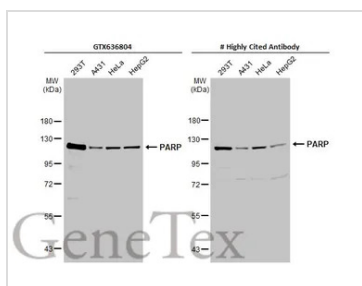
For laboratory research use only. Not for any clinical, therapeutic, or diagnostic use in humans or animals. Not for animal or human consumption.

Note

Purchasers shall not, and agree not to enable third parties to, analyze, copy, reverse engineer or otherwise attempt to determine the structure or sequence of the product.

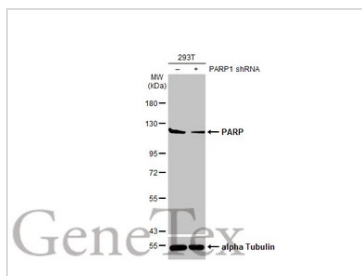
DATA IMAGES

GTX636804 WB Image

Untreated (–) and treated (+) HCT-116 whole cell extract (30 μg) were separated by 7.5% SDS-PAGE, and the membrane was blotted with PARP antibody [HL1364] (GTX636804) diluted at 1:10000. The HRP-conjugated anti-rabbit IgG antibody (GTX213110-01) was used to detect the primary antibody.

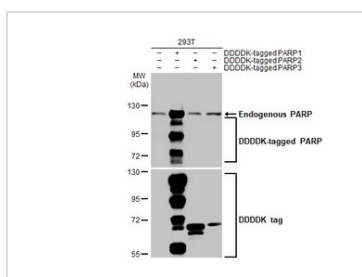

GTX636804 WB Image

Various whole cell extracts (30 μg) were separated by 7.5% SDS-PAGE, and the membranes were blotted with PARP antibody [HL1364] (GTX636804) diluted at 1:10000 and competitor's antibody (# Highly Cited Antibody) diluted at 1:1000. The HRP-conjugated anti-rabbit IgG antibody (GTX213110-01) was used to detect the primary antibody.

*The competitor is not affiliated with GeneTex and does not endorse this product.


GTX636804 WB Image

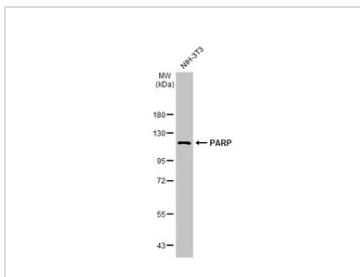
Non-transfected (–) and transfected (+) 293T whole cell extracts (30 μg) were separated by 7.5% SDS-PAGE, and the membrane was blotted with PARP antibody [HL1364] (GTX636804) diluted at 1:10000. The HRP-conjugated anti-rabbit IgG antibody (GTX213110-01) was used to detect the primary antibody.


GTX636804 WB Image

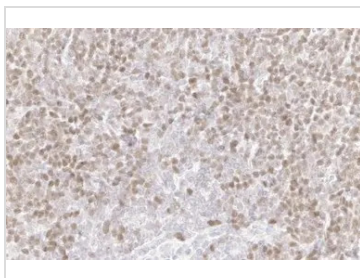
Non-transfected (–) and transfected (+) 293T whole cell extracts (30 μg) were separated by 7.5% SDS-PAGE, and the membrane was blotted with PARP antibody [HL1364] (GTX636804) diluted at 1:100000. The HRP-conjugated anti-rabbit IgG antibody (GTX213110-01) was used to detect the primary antibody.



For full product information, images and publications, please visit our [website](http://www.genetex.com).


GTX636804 WB Image

Whole cell extract (30 µg) was separated by 7.5% SDS-PAGE, and the membrane was blotted with PARP antibody [HL1364] (GTX636804) diluted at 1:1000. The HRP-conjugated anti-rabbit IgG antibody (GTX213110-01) was used to detect the primary antibody, and the signal was developed with Trident ECL plus-Enhanced.

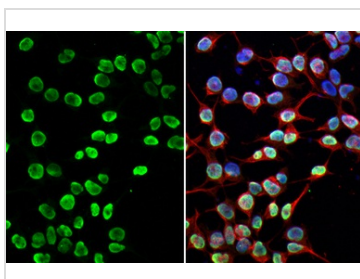

GTX636804 IHC-P Image

PARP antibody [HL1364] detects PARP protein by immunohistochemical analysis.

Sample: Paraffin-embedded mouse spleen.

PARP stained by PARP antibody [HL1364] (GTX636804) diluted at 1:100.

Antigen Retrieval: Citrate buffer, pH 6.0, 15 min


GTX636804 ICC/IF Image

PARP antibody [HL1364] detects PARP protein by immunofluorescent analysis.

Sample: 293T cells were fixed in 4% paraformaldehyde at RT for 15 min.

Green: PARP stained by PARP antibody [HL1364] (GTX636804) diluted at 1:500.

Red: alpha Tubulin, a cytoskeleton marker, stained by alpha Tubulin antibody [GT114] (GTX628802) diluted at 1:1000.

Blue: Fluoroshield with DAPI (GTX30920).



For full product information, images and publications, please visit our [website](https://www.genetex.com).

beta Actin antibody [HL1926]

Cat. No. GTX637675

| | |
|---------------------|--|
| Host | Rabbit |
| Clonality | Monoclonal |
| Isotype | IgG |
| Applications | WB, ICC/IF, IHC-P |
| Reactivity | Human, Mouse, Rat, Zebrafish, Rabbit, Drosophila, Cat, Dog, African green monkey |

References (4)

★★★★★ Review (5)

Package

100 µl, 25 µl

Applications

Application Note

*Optimal dilutions/concentrations should be determined by the researcher.

| Suggested dilution | Recommended dilution |
|--------------------|----------------------|
| WB | 1:5000-1:50000 |
| ICC/IF | Assay dependent |
| IHC-P | Assay dependent |

Not tested in other applications.

Observed MW (kDa) 45 kDa.

Properties

| | |
|----------------------|--|
| Form | Liquid |
| Buffer | PBS |
| Preservative | No preservatives |
| Storage | Store as concentrated solution. Centrifuge briefly prior to opening vial. For short-term storage (1-2 weeks), store at 4°C. For long-term storage, aliquot and store at -20°C or below. Avoid multiple freeze-thaw cycles. |
| Concentration | 1 mg/ml (Please refer to the vial label for the specific concentration.) |
| Immunogen | Recombinant fragment of human beta Actin |
| Purification | Affinity purified by Protein A. |
| Conjugation | Unconjugated |

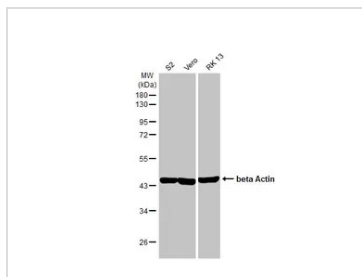
Note

For laboratory research use only. Not for any clinical, therapeutic, or diagnostic use in humans or animals. Not for animal or human consumption.

Purchasers shall not, and agree not to enable third parties to, analyze, copy, reverse engineer or otherwise attempt to determine the structure or sequence of the product.

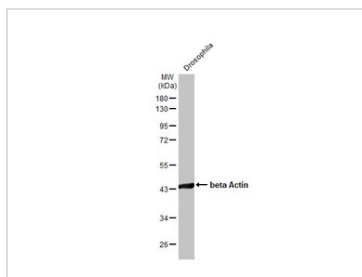
For full product information, images and publications, please visit our [website](#).

DATA IMAGES



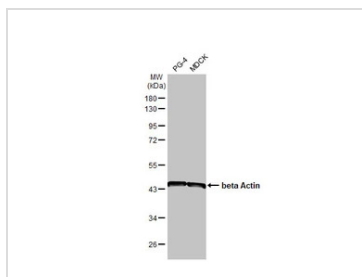
GTx637675 WB Image

Various whole cell extracts (30 µg) were separated by 10% SDS-PAGE, and the membranes were blotted with beta Actin antibody [HL1926] (GTx637675) diluted at 1:10000. The HRP-conjugated anti-rabbit IgG antibody (GTx213110-01) was used to detect the primary antibody.



GTx637675 WB Image

Whole cell extract (30 µg) was separated by 10% SDS-PAGE, and the membrane was blotted with beta Actin antibody [HL1926] (GTx637675) diluted at 1:10000. The HRP-conjugated anti-rabbit IgG antibody (GTx213110-01) was used to detect the primary antibody.



GTx637675 WB Image

Various whole cell extracts (30 µg) were separated by 10% SDS-PAGE, and the membrane was blotted with beta Actin antibody [HL1926] (GTx637675) diluted at 1:10000. The HRP-conjugated anti-rabbit IgG antibody (GTx213110-01) was used to detect the primary antibody.



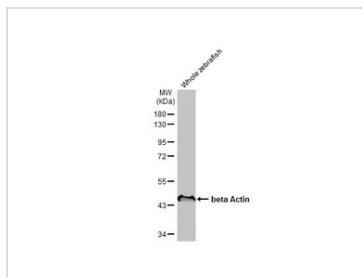
GTx637675 IHC-P Image

beta Actin antibody [HL1926] detects beta Actin protein at cell membrane by immunohistochemical analysis.

Sample: Paraffin-embedded mouse intestine.

beta Actin stained by beta Actin antibody [HL1926] (GTx637675) diluted at 1:100.

Antigen Retrieval: Citrate buffer, pH 6.0, 15 min

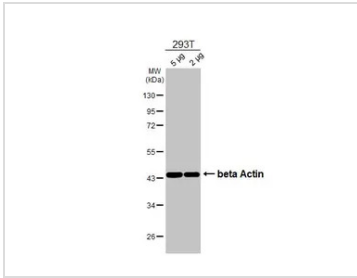


GTx637675 WB Image

Whole cell extract (30 µg) was separated by 10% SDS-PAGE, and the membrane was blotted with beta Actin antibody [HL1926] (GTx637675) diluted at 1:10000. The HRP-conjugated anti-rabbit IgG antibody (GTx213110-01) was used to detect the primary antibody.

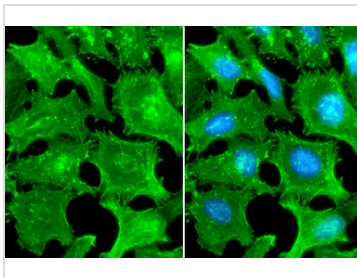


For full product information, images and publications, please visit our [website](https://www.genetex.com).



GTX637675 WB Image

Various whole cell extracts were separated by 10% SDS-PAGE, and the membrane was blotted with beta Actin antibody [HL1926] (GTX637675) diluted at 1:100000. The HRP-conjugated anti-rabbit IgG antibody (GTX213110-01) was used to detect the primary antibody.



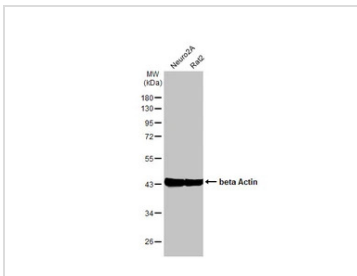
GTX637675 ICC/IF Image

beta Actin antibody [HL1926] detects beta Actin protein by immunofluorescent analysis.

Sample: HeLa cells were fixed in ice-cold MeOH for 10 min.

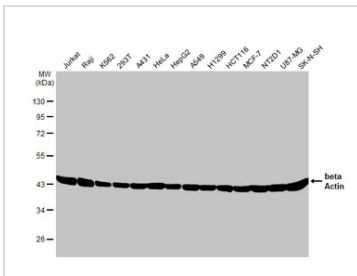
Green: beta Actin stained by beta Actin antibody [HL1926] (GTX637675) diluted at 1:500.

Blue: Fluoroshield with DAPI (GTX30920).



GTX637675 WB Image

Various whole cell extracts (30 µg) were separated by 10% SDS-PAGE, and the membrane was blotted with beta Actin antibody [HL1926] (GTX637675) diluted at 1:50000. The HRP-conjugated anti-rabbit IgG antibody (GTX213110-01) was used to detect the primary antibody.



GTX637675 WB Image

Various whole cell extracts (30 µg) were separated by 10% SDS-PAGE, and the membrane was blotted with beta Actin antibody [HL1926] (GTX637675) diluted at 1:50000. The HRP-conjugated anti-rabbit IgG antibody (GTX213110-01) was used to detect the primary antibody.



For full product information, images and publications, please visit our [website](https://www.genetex.com).

PCNA antibody [HL1965]

Cat. No. GTX637858

| | |
|---------------------|--|
| Host | Rabbit |
| Clonality | Monoclonal |
| Isotype | IgG |
| Applications | WB, IHC-P, IHC-Fr |
| Reactivity | Human, Mouse, Rat, Zebrafish, Cat, Dog |

Package
100 µl, 25 µl

Applications

Application Note

*Optimal dilutions/concentrations should be determined by the researcher.

| Suggested dilution | Recommended dilution |
|--------------------|----------------------|
| WB | 1:500-1:3000 |
| IHC-P | Assay dependent |
| IHC-Fr | Assay dependent |

Not tested in other applications.

Observed MW (kDa) 36 kDa.

Properties

| | |
|----------------------|--|
| Form | Liquid |
| Buffer | PBS |
| Preservative | No preservatives |
| Storage | Store as concentrated solution. Centrifuge briefly prior to opening vial. For short-term storage (1-2 weeks), store at 4°C. For long-term storage, aliquot and store at -20°C or below. Avoid multiple freeze-thaw cycles. |
| Concentration | 1 mg/ml (Please refer to the vial label for the specific concentration.) |
| Immunogen | Recombinant fragment of human PCNA |
| Purification | Affinity purified by Protein A. |
| Conjugation | Unconjugated |

Note

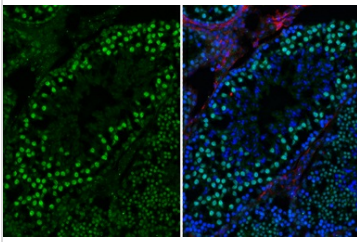
For laboratory research use only. Not for any clinical, therapeutic, or diagnostic use in humans or animals. Not for animal or human consumption.

Purchasers shall not, and agree not to enable third parties to, analyze, copy, reverse engineer or otherwise attempt to determine the structure or sequence of the product.



For full product information, images and publications, please visit our [website](#).

DATA IMAGES



GTX637858 IHC-Fr Image

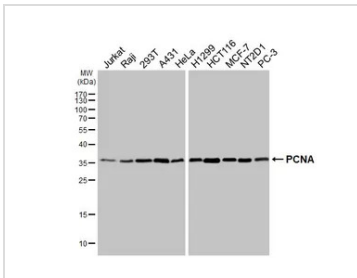
PCNA antibody [HL1965] detects PCNA protein by immunohistochemical analysis.

Sample: Frozen-sectioned mouse testis.

Green: PCNA stained by PCNA antibody [HL1965] (GTX637858) diluted at 1:200.

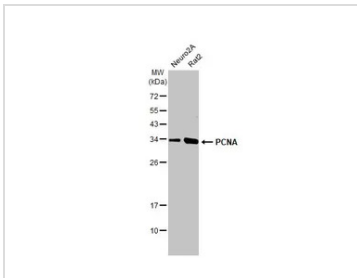
Red: Vimentin antibody [GT812] (GTX629744) diluted at 1:1000.

Blue: Hoechst 33342 staining.



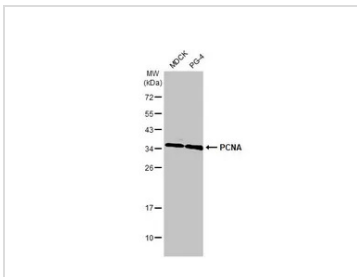
GTX637858 WB Image

Various whole cell extracts (30 µg) were separated by 12% SDS-PAGE, and the membrane was blotted with PCNA antibody [HL1965] (GTX637858) diluted at 1:1000. The HRP-conjugated anti-rabbit IgG antibody (GTX213110-01) was used to detect the primary antibody.



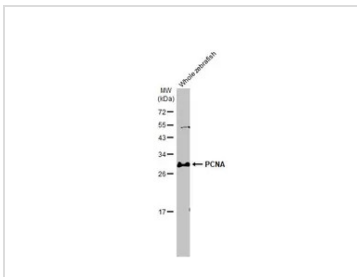
GTX637858 WB Image

Various whole cell extracts (30 µg) were separated by 12% SDS-PAGE, and the membrane was blotted with PCNA antibody [HL1965] (GTX637858) diluted at 1:1000. The HRP-conjugated anti-rabbit IgG antibody (GTX213110-01) was used to detect the primary antibody.



GTX637858 WB Image

Various whole cell extracts (30 µg) were separated by 12% SDS-PAGE, and the membrane was blotted with PCNA antibody [HL1965] (GTX637858) diluted at 1:1000. The HRP-conjugated anti-rabbit IgG antibody (GTX213110-01) was used to detect the primary antibody.

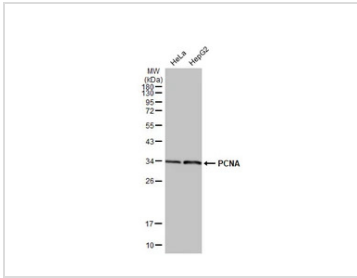


GTX637858 WB Image

Whole zebrafish extract (30 µg) was separated by 12% SDS-PAGE, and the membrane was blotted with PCNA antibody [HL1965] (GTX637858) diluted at 1:1000. The HRP-conjugated anti-rabbit IgG antibody (GTX213110-01) was used to detect the primary antibody.

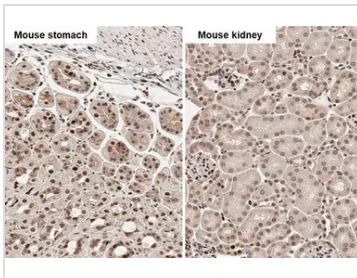


For full product information, images and publications, please visit our [website](#).



GTx637858 WB Image

Various whole cell extracts (30 µg) were separated by 12% SDS-PAGE, and the membrane was blotted with PCNA antibody [HL1965] (GTx637858) diluted at 1:1000. The HRP-conjugated anti-rabbit IgG antibody (GTx213110-01) was used to detect the primary antibody. Corresponding RNA expression data for the same cell lines are based on Human Protein Atlas program.



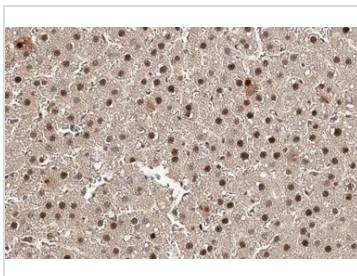
GTx637858 IHC-P Image

PCNA antibody [HL1965] detects PCNA protein by immunohistochemical analysis.

Sample: Paraffin-embedded mouse tissues.

PCNA stained by PCNA antibody [HL1965] (GTx637858) diluted at 1:200.

Antigen Retrieval: Citrate buffer, pH 6.0, 15 min



GTx637858 IHC-P Image

PCNA antibody [HL1965] detects PCNA protein at nucleus by immunohistochemical analysis.

Sample: Paraffin-embedded rat liver.

PCNA stained by PCNA antibody [HL1965] (GTx637858) diluted at 1:200.

Antigen Retrieval: Citrate buffer, pH 6.0, 15 min



For full product information, images and publications, please visit our [website](https://www.genetex.com).