

GTX300011

DSB Damage Recognition Antibody Panel – Signal Amplification

Product Content

Cat No	Product Name	Reactivity	Applications	Package
GTX213110-01	Goat Anti-Rabbit IgG antibody (HRP)	Rabbit	WB, IHC-P, ELISA	25 µl
GTX635395	ATM antibody [2C1-RB]	Human, Mouse, Rat	WB, IHC-P	25 µl
GTX635479	53BP1 antibody [HL275]	Human, Mouse, Rat, Cat, Dog	WB, ICC/IF, IHC-P	25 µl
GTX636713	Histone H2A.XS139ph (phospho Ser139) antibody [HL1299]	Human, Mouse	WB, ICC/IF, IHC-P	25 µl
GTX70113	BRCA1 antibody [8F7]	Human, Mouse	WB, IHC-P, IP, IHC	25 µl

Note

For In vitro laboratory use only. Not for any clinical, therapeutic, or diagnostic use in humans or animals. Not for animal or human consumption.



For full product information, images and publications, please visit our [website](#).

Goat Anti-Rabbit IgG antibody (HRP)

Cat. No. GTX213110-01

Host	Goat
Clonality	Polyclonal
Isotype	IgG
Applications	WB, IHC-P, ELISA
Reactivity	Rabbit

References (631)

Package

1 ml

Applications

Application Note

*Optimal dilutions/concentrations should be determined by the researcher.

Suggested dilution	Recommended dilution
WB	1:5000-1:20000
IHC-P	1:100-1:1000
ELISA	1:5000-1:20000

Not tested in other applications.

Properties

Form	Liquid
Buffer	0.05M Tris, 0.15M NaCl
Preservative	0.025% ProClin 300
Storage	Store as concentrated solution. Centrifuge briefly prior to opening vial. For short-term storage (1-2 weeks), store at 4°C. For long-term storage, aliquot and store at -20°C or below. Avoid multiple freeze-thaw cycles.
Concentration	0.2 mg/ml (Please refer to the vial label for the specific concentration.)
Immunogen	Highly purified whole rabbit IgG
Purification	Purified by antigen-affinity chromatography.
Conjugation	Horseradish peroxidase(HRP)

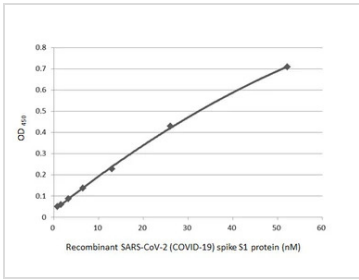
Note

For laboratory research use only. Not for any clinical, therapeutic, or diagnostic use in humans or animals. Not for animal or human consumption.

Purchasers shall not, and agree not to enable third parties to, analyze, copy, reverse engineer or otherwise attempt to determine the structure or sequence of the product.

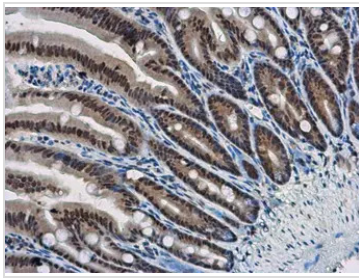
For full product information, images and publications, please visit our [website](#).

DATA IMAGES



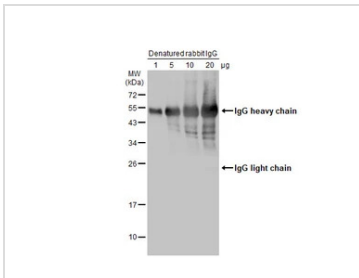
GTX213110-01 ELISA Image

Indirect ELISA analysis performed by coating plate with recombinant SARS-CoV-2 (COVID-19) Spike S1 protein, His tag (active) (GTX135817-pro) (52.15-0.81 nM). Coated protein was probed with SARS-CoV-2 (COVID-19) Spike S1 antibody [HL134] (GTX635671) (1 µg/mL). Goat anti-rabbit IgG antibody (HRP) (GTX213110-01) (1:10000) was used to detect bound primary antibody.



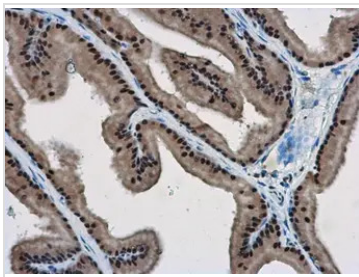
GTX213110-01 IHC-P Image

WBP11 antibody detects WBP11 protein at nucleus in mouse intestine by immunohistochemical analysis. Sample: Paraffin-embedded mouse intestine. WBP11 antibody (GTX118654) diluted at 1:500. The signal was developed by Rabbit IgG antibody (HRP) (GTX213110-01) Antigen Retrieval: Citrate buffer, pH 6.0, 15 min



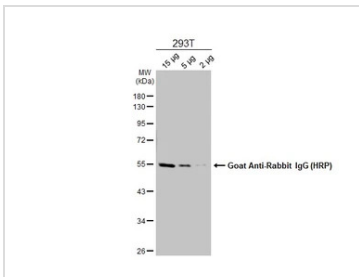
GTX213110-01 WB Image

Various amounts of denatured rabbit IgG protein were separated by 12% SDS-PAGE, and the membrane was blotted with HRP-conjugated anti-rabbit IgG antibody (GTX213110-01) diluted at 1:5000.



GTX213110-01 IHC-P Image

WBP11 antibody detects WBP11 protein at nucleus in rat prostate by immunohistochemical analysis. Sample: Paraffin-embedded rat prostate. WBP11 antibody (GTX118654) diluted at 1:500. The signal was developed by Rabbit IgG antibody (HRP) (GTX213110-01). Antigen Retrieval: Citrate buffer, pH 6.0, 15 min

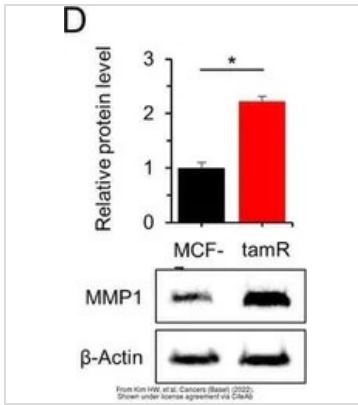


GTX213110-01 WB Image

Various whole cell extracts were separated by 10% SDS-PAGE, and the membrane was blotted with alpha Tubulin antibody (GTX112141) diluted at 1:10000. The HRP-conjugated anti-rabbit IgG antibody (GTX213110-01) was used to detect the primary antibody.

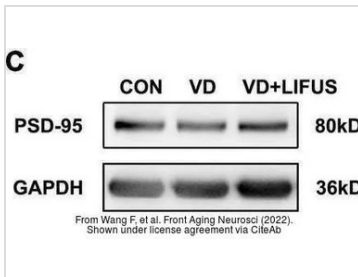


For full product information, images and publications, please visit our [website](#).



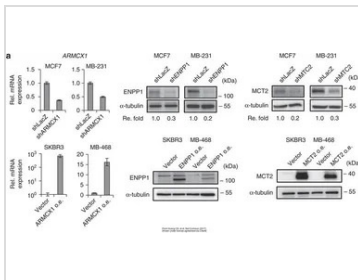
GTx213110-01 WB Image

The data was published in the 2022 in Cancers (Basel). [PMID: 35267540](https://pubmed.ncbi.nlm.nih.gov/35267540/)



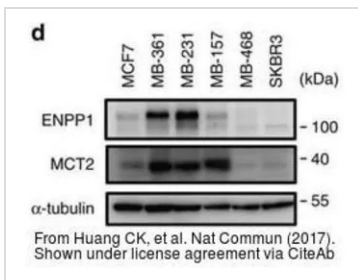
GTx213110-01 WB Image

The data was published in the 2022 in Front Aging Neurosci. [PMID: 35264943](https://pubmed.ncbi.nlm.nih.gov/35264943/)



GTx213110-01 WB Image

The data was published in the 2017 in Nat Commun. [PMID: 28281525](https://pubmed.ncbi.nlm.nih.gov/28281525/)

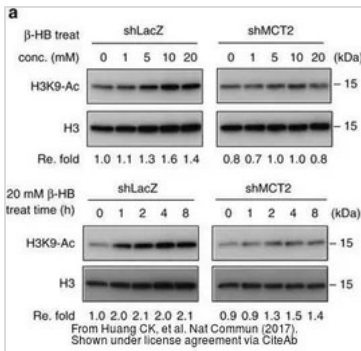


GTx213110-01 WB Image

The data was published in the 2017 in Nat Commun. [PMID: 28281525](https://pubmed.ncbi.nlm.nih.gov/28281525/)

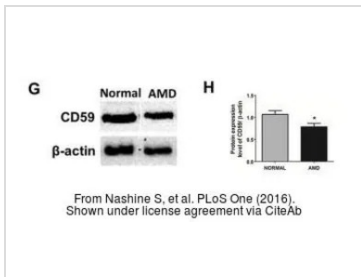


For full product information, images and publications, please visit our [website](https://www.genetex.com).



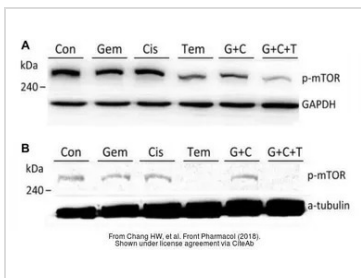
GTx213110-01 WB Image

The data was published in the 2017 in Nat Commun. [PMID: 28281525](https://pubmed.ncbi.nlm.nih.gov/28281525/)



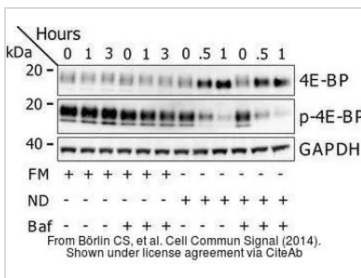
GTx213110-01 WB Image

The data was published in the 2016 in PLoS One. [PMID: 27486856](https://pubmed.ncbi.nlm.nih.gov/27486856/)



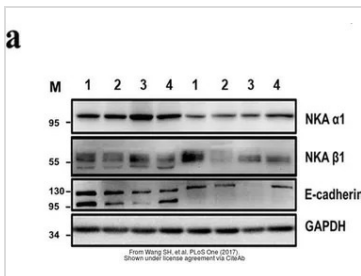
GTx213110-01 WB Image

The data was published in the journal Front Pharmacol in 2018. [PMID: 30087612](https://pubmed.ncbi.nlm.nih.gov/30087612/)



GTx213110-01 WB Image

The data was published in the journal Cell Commun Signal in 2014. [PMID: 25214434](https://pubmed.ncbi.nlm.nih.gov/25214434/)

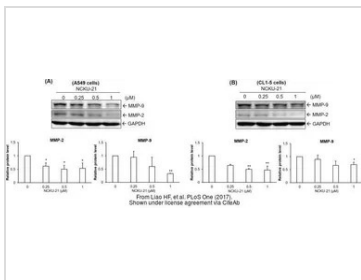


GTx213110-01 WB Image

The data was published in the journal PLoS One in 2017. [PMID: 28832634](https://pubmed.ncbi.nlm.nih.gov/28832634/)

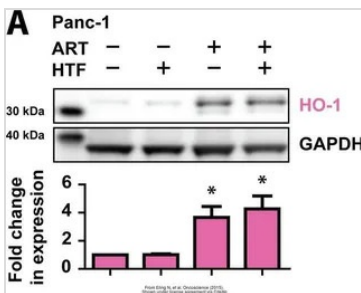


For full product information, images and publications, please visit our [website](https://www.genetex.com).



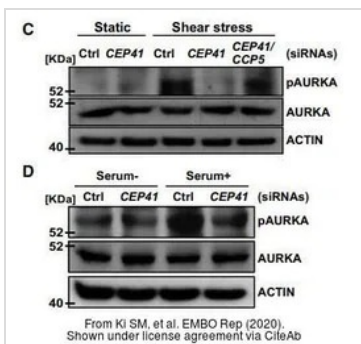
GTX213110-01 WB Image

The data was published in the journal PLoS One in 2017. [PMID: 28945763](https://pubmed.ncbi.nlm.nih.gov/28945763/)



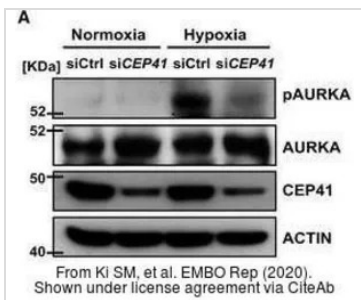
GTX213110-01 WB Image

The data was published in the journal Oncotarget in 2015. [PMID: 26097885](https://pubmed.ncbi.nlm.nih.gov/26097885/)



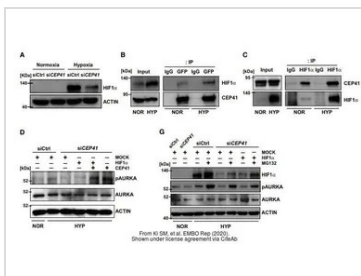
GTX213110-01 WB Image

The data was published in the journal EMBO Rep in 2020. [PMID: 31885126](https://pubmed.ncbi.nlm.nih.gov/31885126/)



GTX213110-01 WB Image

The data was published in the journal EMBO Rep in 2020. [PMID: 31885126](https://pubmed.ncbi.nlm.nih.gov/31885126/)



GTX213110-01 WB Image

The data was published in the journal EMBO Rep in 2020. [PMID: 31885126](https://pubmed.ncbi.nlm.nih.gov/31885126/)



For full product information, images and publications, please visit our [website](https://www.genetex.com).

ATM antibody [2C1-RB]

Cat. No. GTX635395

Host	Rabbit
Clonality	Monoclonal
Isotype	IgG
Applications	WB, IHC-P
Reactivity	Human, Mouse, Rat

Package
100 µl, 25 µl

Applications

Application Note

*Optimal dilutions/concentrations should be determined by the researcher.

Suggested dilution	Recommended dilution
WB	1:1000
IHC-P	Assay dependent

Not tested in other applications.

Observed MW (kDa) 350 kDa.

Properties

Form Liquid

Buffer PBS

Preservative No preservatives

Storage Store as concentrated solution. Centrifuge briefly prior to opening vial. For short-term storage (1-2 weeks), store at 4°C. For long-term storage, aliquot and store at -20°C or below. Avoid multiple freeze-thaw cycles.

Concentration 1 mg/ml (Please refer to the vial label for the specific concentration.)

Immunogen Recombinant protein expressed in E. coli corresponding to amino acids 2577-3056.

Purification Affinity purified by Protein A.

Conjugation Unconjugated

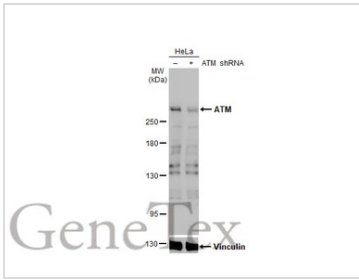
Note For laboratory research use only. Not for any clinical, therapeutic, or diagnostic use in humans or animals. Not for animal or human consumption.

Purchasers shall not, and agree not to enable third parties to, analyze, copy, reverse engineer or otherwise attempt to determine the structure or sequence of the product.



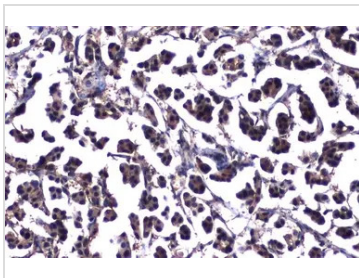
For full product information, images and publications, please visit our [website](#).

DATA IMAGES



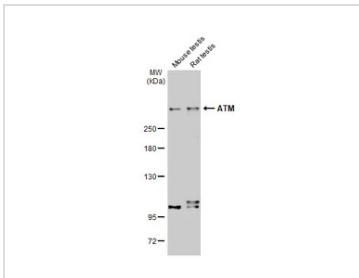
GTX635395 WB Image

Non-transfected (-) and transfected (+) HeLa whole cell extracts (30 µg) were separated by 5% SDS-PAGE, and the membrane was blotted with ATM antibody [2C1-RB] (GTX635395) diluted at 1:1000. The HRP-conjugated anti-rabbit IgG antibody (GTX213110-01) was used to detect the primary antibody.



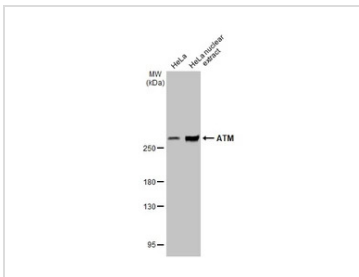
GTX635395 IHC-P Image

ATM antibody [2C1-RB] detects ATM protein at nucleus by immunohistochemical analysis. Sample: Paraffin-embedded human breast carcinoma. ATM stained by ATM antibody [2C1-RB] (GTX635395) diluted at 1:200. Antigen Retrieval: Citrate buffer, pH 6.0, 15 min



GTX635395 WB Image

Various tissue extracts (50 µg) were separated by 5% SDS-PAGE, and the membrane was blotted with ATM antibody [2C1-RB] (GTX635395) diluted at 1:1000. The HRP-conjugated anti-rabbit IgG antibody (GTX213110-01) was used to detect the primary antibody.



GTX635395 WB Image

HeLa whole cell and nuclear extracts (30 µg) were separated by 5% SDS-PAGE, and the membrane was blotted with ATM antibody [2C1-RB] (GTX635395) diluted at 1:1000. The HRP-conjugated anti-rabbit IgG antibody (GTX213110-01) was used to detect the primary antibody.



For full product information, images and publications, please visit our [website](#).

53BP1 antibody [HL275]

Cat. No. GTX635479

Host	Rabbit
Clonality	Monoclonal
Isotype	IgG
Applications	WB, ICC/IF, IHC-P
Reactivity	Human, Mouse, Rat, Cat, Dog

References (2)

Package

100 µl, 25 µl

Applications

Application Note

*Optimal dilutions/concentrations should be determined by the researcher.

Suggested dilution	Recommended dilution
WB	1:500-1:3000
ICC/IF	Assay dependent
IHC-P	Assay dependent

Not tested in other applications.

Observed MW (kDa) 450 kDa.

Properties

Form	Liquid
Buffer	PBS
Preservative	No preservatives
Storage	Store as concentrated solution. Centrifuge briefly prior to opening vial. For short-term storage (1-2 weeks), store at 4°C. For long-term storage, aliquot and store at -20°C or below. Avoid multiple freeze-thaw cycles.
Concentration	1.4 mg/ml (Please refer to the vial label for the specific concentration.)
Immunogen	Carrier-protein conjugated synthetic peptide encompassing a sequence within the C-terminus region of human 53BP1. The exact sequence is proprietary.
Purification	Affinity purified by Protein A.
Conjugation	Unconjugated

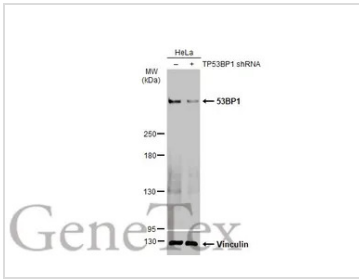
Note

For laboratory research use only. Not for any clinical, therapeutic, or diagnostic use in humans or animals. Not for animal or human consumption.

Purchasers shall not, and agree not to enable third parties to, analyze, copy, reverse engineer or otherwise attempt to determine the structure or sequence of the product.

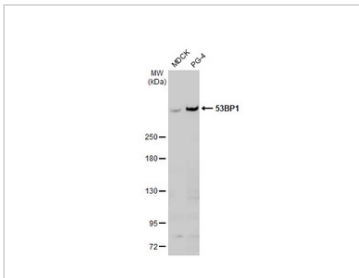
For full product information, images and publications, please visit our [website](#).

DATA IMAGES



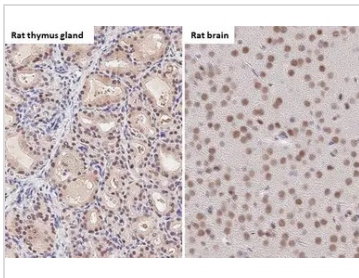
GTX635479 WB Image

Non-transfected (-) and transfected (+) HeLa whole cell extracts (30 µg) were separated by 5% SDS-PAGE, and the membrane was blotted with 53BP1 antibody [HL36] (GTX635479) diluted at 1:1000. The HRP-conjugated anti-rabbit IgG antibody (GTX213110-01) was used to detect the primary antibody.



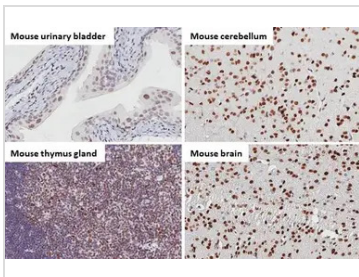
GTX635479 WB Image

Various whole cell extracts (30 µg) were separated by 5% SDS-PAGE, and the membrane was blotted with 53BP1 antibody [HL36] (GTX635479) diluted at 1:1000. The HRP-conjugated anti-rabbit IgG antibody (GTX213110-01) was used to detect the primary antibody.



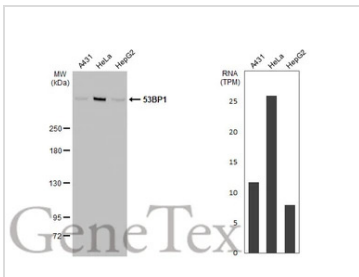
GTX635479 IHC-P Image

53BP1 antibody [HL275] detects 53BP1 protein by immunohistochemical analysis.
 Sample: Paraffin-embedded rat tissues.
 53BP1 stained by 53BP1 antibody [HL275] (GTX635479) diluted at 1:100.
 Antigen Retrieval: Citrate buffer, pH 6.0, 15 min



GTX635479 IHC-P Image

53BP1 antibody [HL275] detects 53BP1 protein by immunohistochemical analysis.
 Sample: Paraffin-embedded mouse tissues.
 53BP1 stained by 53BP1 antibody [HL275] (GTX635479) diluted at 1:100.
 Antigen Retrieval: Citrate buffer, pH 6.0, 15 min

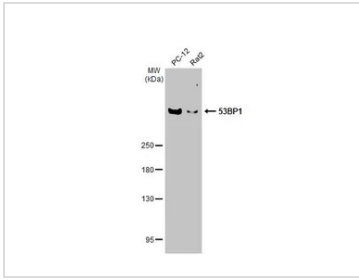


GTX635479 WB Image

Various whole cell extracts (30 µg) were separated by 5% SDS-PAGE, and the membrane was blotted with 53BP1 antibody [HL275] (GTX635479) diluted at 1:1000. The HRP-conjugated anti-rabbit IgG antibody (GTX213110-01) was used to detect the primary antibody. Corresponding RNA expression data for the same cell lines are based on Human Protein Atlas program.

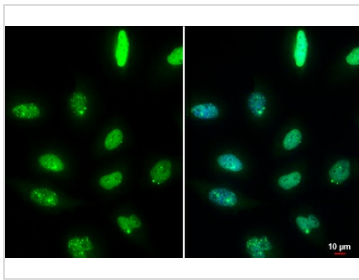


For full product information, images and publications, please visit our [website](http://www.genetex.com).



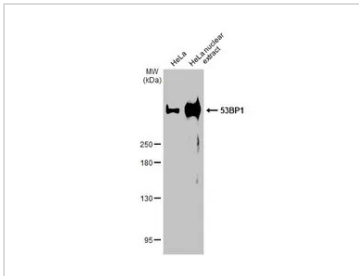
GTX635479 WB Image

Various whole cell extracts (30 µg) were separated by 5% SDS-PAGE, and the membrane was blotted with 53BP1 antibody [HL36] (GTX635479) diluted at 1:1000. The HRP-conjugated anti-rabbit IgG antibody (GTX213110-01) was used to detect the primary antibody.



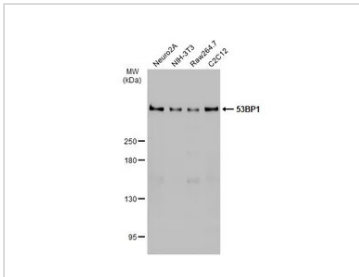
GTX635479 ICC/IF Image

53BP1 antibody [HL275] detects 53BP1 protein at nucleus by immunofluorescent analysis.
 Sample: HeLa cells were fixed in 4% paraformaldehyde at RT for 15 min.
 Green: 53BP1 stained by 53BP1 antibody [HL275] (GTX635479) diluted at 1:1000.
 Blue: Fluoroshield with DAPI (GTX30920).
 Scale bar= 10 µm.



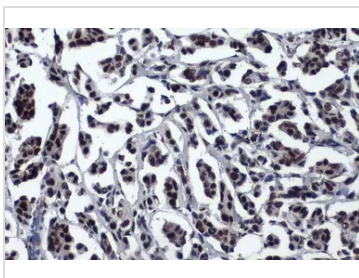
GTX635479 WB Image

HeLa whole cell and nuclear extracts (30 µg) were separated by 5% SDS-PAGE, and the membrane was blotted with 53BP1 antibody [HL36] (GTX635479) diluted at 1:1000. The HRP-conjugated anti-rabbit IgG antibody (GTX213110-01) was used to detect the primary antibody.



GTX635479 WB Image

Various whole cell extracts (30 µg) were separated by 5% SDS-PAGE, and the membrane was blotted with 53BP1 antibody [HL36] (GTX635479) diluted at 1:1000. The HRP-conjugated anti-rabbit IgG antibody (GTX213110-01) was used to detect the primary antibody.

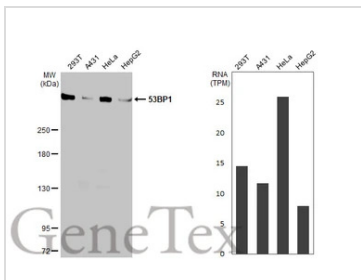


GTX635479 IHC-P Image

53BP1 antibody [HL275] detects 53BP1 protein at nucleus by immunohistochemical analysis.
 Sample: Paraffin-embedded human breast carcinoma.
 53BP1 stained by 53BP1 antibody [HL275] (GTX635479) diluted at 1:200.
 Antigen Retrieval: Citrate buffer, pH 6.0, 15 min



For full product information, images and publications, please visit our [website](#).


GTK635479 WB Image

Various whole cell extracts (30 µg) were separated by 5% SDS-PAGE, and the membrane was blotted with 53BP1 antibody [HL275] (GTK635479) diluted at 1:1000. The HRP-conjugated anti-rabbit IgG antibody (GTK213110-01) was used to detect the primary antibody. Corresponding RNA expression data for the same cell lines are based on Human Protein Atlas program.



For full product information, images and publications, please visit our [website](#).

Histone H2A.XS139ph (phospho Ser139) antibody [HL1299]

Cat. No. GTX636713

Host	Rabbit
Clonality	Monoclonal
Isotype	IgG
Applications	WB, ICC/IF, IHC-P
Reactivity	Human, Mouse

References (2)

Package

100 µl, 25 µl

Applications

Application Note

*Optimal dilutions/concentrations should be determined by the researcher.

Suggested dilution	Recommended dilution
WB	1:500-1:3000
ICC/IF	Assay dependent
IHC-P	Assay dependent

Not tested in other applications.

Observed MW (kDa) 15 kDa.

Properties

Form	Liquid
Buffer	PBS
Preservative	No preservatives
Storage	Store as concentrated solution. Centrifuge briefly prior to opening vial. For short-term storage (1-2 weeks), store at 4°C. For long-term storage, aliquot and store at -20°C or below. Avoid multiple freeze-thaw cycles.
Concentration	1 mg/ml (Please refer to the vial label for the specific concentration.)
Immunogen	Carrier-protein conjugated synthetic peptide surrounding phospho Ser139 of human Histone H2A.X. The exact sequence is proprietary.
Purification	Affinity purified by Protein A.
Conjugation	Unconjugated

Note

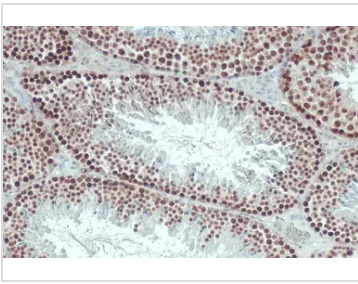
For laboratory research use only. Not for any clinical, therapeutic, or diagnostic use in humans or animals. Not for animal or human consumption.

Purchasers shall not, and agree not to enable third parties to, analyze, copy, reverse engineer or otherwise attempt to determine the structure or sequence of the product.



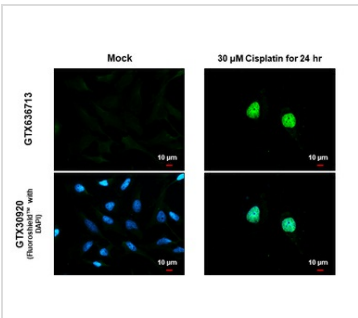
For full product information, images and publications, please visit our [website](#).

DATA IMAGES



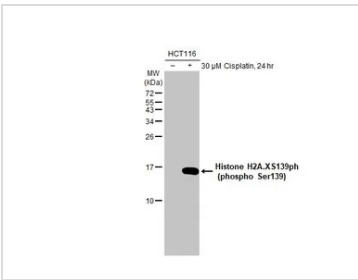
GTX636713 IHC-P Image

Histone H2A.XS139ph (phospho Ser139) antibody [HL1299] detects Histone H2A.XS139ph (phospho Ser139) protein at nucleus by immunohistochemical analysis.
 Sample: Paraffin-embedded mouse testis.
 Histone H2A.XS139ph (phospho Ser139) stained by Histone H2A.XS139ph (phospho Ser139) antibody [HL1299] (GTX636713) diluted at 1:100.
 Antigen Retrieval: Citrate buffer, pH 6.0, 15 min



GTX636713 ICC/IF Image

Histone H2A.XS139ph (phospho Ser139) antibody [HL1299] detects Histone H2A.XS139ph (phospho Ser139) protein at nucleus by immunofluorescent analysis.
 Sample: Mock and treated HeLa cells were fixed in 4% paraformaldehyde at RT for 15 min.
 Green: Histone H2A.XS139ph (phospho Ser139) stained by Histone H2A.XS139ph (phospho Ser139) antibody [HL1299] (GTX636713) diluted at 1:500.
 Blue: Fluoroshield with DAPI (GTX30920).
 Scale bar= 10μm.



GTX636713 WB Image

Untreated (-) and treated (+) HCT116 whole cell extracts (30 μg) were separated by 15% SDS-PAGE, and the membrane was blotted with Histone H2A.XS139ph (phospho Ser139) antibody [HL1299] (GTX636713) diluted at 1:1000. The HRP-conjugated anti-rabbit IgG antibody (GTX213110-01) was used to detect the primary antibody.



For full product information, images and publications, please visit our [website](#).

BRCA1 antibody [8F7]

Cat. No. GTX70113

Host	Mouse
Clonality	Monoclonal
Isotype	IgG1
Applications	WB, IHC-P, IP, IHC
Reactivity	Human, Mouse

References (16)

Package

100 µl

Applications

Application Note

For IHC-P: Use at an assay dependent dilution. Perform heat mediated antigen retrieval before commencing with IHC staining protocol (0.1 M citrate buffer at 95C in water bath for 20 min). Avoid nonspecific binding by incubating in normal rabbit anti-mouse serum. Incubate primary antibody overnight and use a biotin-streptavidin amplification kit. Block endogenous peroxidase with 0.3% H₂O₂ for 30 minutes. For IP: Use at an assay dependent dilution. For WB: 1:500-1:3000. This antibody recognizes full-length BRCA1, a 220-kDa nuclear phosphoprotein. Optimal dilutions/concentrations should be determined by the researcher.

Calculated MW 208 kDa. ([Note](#))**Product Note**

This antibody recognizes full-length BRCA1, a 220-kDa nuclear phosphoprotein. Mutations in this tumor suppressor gene greatly increase the risk of breast cancer.
KO/KD validation is based on published data (PMID: 23805307).

Properties

Form	Liquid
Buffer	PBS
Preservative	No preservatives
Storage	Store as concentrated solution. Centrifuge briefly prior to opening vial. For short-term storage (1-2 weeks), store at 4°C. For long-term storage, aliquot and store at -20°C or below. Avoid multiple freeze-thaw cycles.
Concentration	1 mg/ml (Please refer to the vial label for the specific concentration.)
Immunogen	Protein fragment expressed in E. coli corresponding to amino acids 341-748.
Purification	Protein G purified
Conjugation	Unconjugated

Note

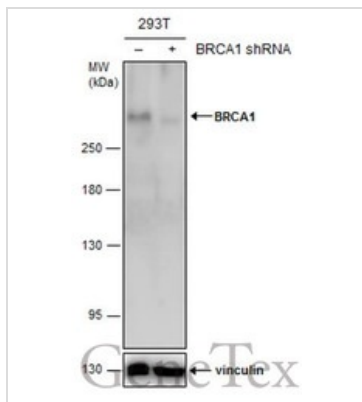
For laboratory research use only. Not for any clinical, therapeutic, or diagnostic use in humans or animals. Not for animal or human consumption.

Purchasers shall not, and agree not to enable third parties to, analyze, copy, reverse engineer or otherwise attempt to determine the structure or sequence of the product.



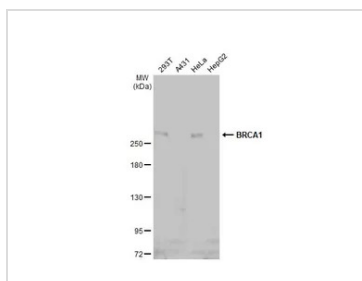
For full product information, images and publications, please visit our [website](#).

DATA IMAGES



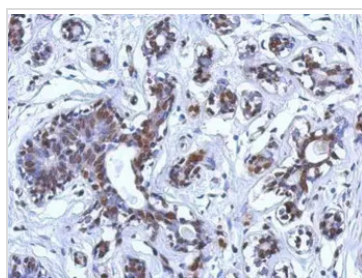
GTX70113 WB Image

Non-transfected (-) and transfected (+) 293T whole cell extracts (60 µg) were separated by 5% SDS-PAGE, and the membrane was blotted with BRCA1 antibody [8F7] (GTX70113) diluted at 1:500. The HRP-conjugated anti-mouse IgG antibody (GTX213111-01) was used to detect the primary antibody.



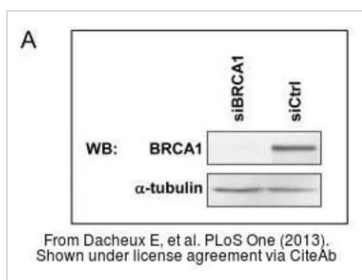
GTX70113 WB Image

Various whole cell extracts (30 µg) were separated by 5% SDS-PAGE, and the membrane was blotted with BRCA1 antibody [8F7] (GTX70113) diluted at 1:500. The HRP-conjugated anti-mouse IgG antibody (GTX213111-01) was used to detect the primary antibody, and the signal was developed with Trident ECL plus-Enhanced.



GTX70113 IHC-P Image

Immunohistochemical analysis of paraffin-embedded Breast ca, using BRCA1(GTX70113) antibody at 1:200 dilution.

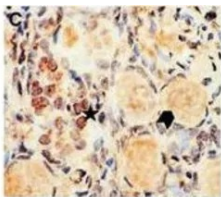


GTX70113 WB Image

The data was published in the journal PLoS One in 2013. [PMID: 23805307](https://pubmed.ncbi.nlm.nih.gov/23805307/)



For full product information, images and publications, please visit our [website](#).



m Bernard-Gallon DJ, et al. Breast Cancer Res (2001)
Shown under license agreement via CiteAb

GTx70113 IHC-P Image

The data was published in the journal Breast Cancer Res in 2001. [PMID: 11250747](#)



For full product information, images and publications, please visit our [website](#).