

GTX300014

Homologous Recombination Antibody Panel

Product Content

Cat No	Product Name	Reactivity	Application	Package
GTX101310	ATRX antibody [C3], C-term	Human, Mouse, Rat	WB, ICC/IF, IHC-P, IP	25 µl
GTX108749	RPA70 antibody [C1C3]	Human, Mouse	WB, ICC/IF, IHC-P, IP	25 µl
GTX113950	RAD54B antibody [N1N2], N-term	Human	WB	25 µl
GTX115455	RAD51AP1 antibody [N1C1]	Human	WB	25 µl
GTX213111-01	Goat Anti-Mouse IgG antibody (HRP)	Mouse	WB, IHC-P, ELISA, IHC	25 µl
GTX70123	BRCA2 antibody [5F6]	Human	WB, IHC-P, IHC-Fr	25 µl
GTX70230	Rad51 antibody [14B4]	Human, Mouse, Rat, Chicken	WB, ICC/IF, IHC-P, IP, IHC, PLA	25 µl
GTX70301	Rad52 antibody [5H9]	Human	WB	25 µl

Note

For In vitro laboratory use only. Not for any clinical, therapeutic, or diagnostic use in humans or animals. Not for animal or human consumption.



For full product information, images and publications, please visit our [website](#).

ATRX antibody [C3], C-term

Cat. No. GTX101310

Host	Rabbit
Clonality	Polyclonal
Isotype	IgG
Application	WB, ICC/IF, IHC-P, IP
Reactivity	Human, Mouse, Rat

Reference (5)
Package
100 µl, 25 µl

APPLICATION

Application Note

*Optimal dilutions/concentrations should be determined by the researcher.

Suggested dilution	Recommended dilution
WB	1:500-1:3000
ICC/IF	1:100-1:1000
IHC-P	1:100-1:1000
IP	1:100-1:500

Not tested in other applications.

Calculated MW 283 kDa. ([Note](#))

PROPERTIES

Form	Liquid
Buffer	PBS, 1% BSA, 20% Glycerol
Preservative	0.025% ProClin 300
Storage	Store as concentrated solution. Centrifuge briefly prior to opening vial. For short-term storage (1-2 weeks), store at 4°C. For long-term storage, aliquot and store at -20°C or below. Avoid multiple freeze-thaw cycles.
Concentration	0.27 mg/ml (Please refer to the vial label for the specific concentration.)
Immunogen	Recombinant protein encompassing a sequence within the C-terminus region of human ATRX. The exact sequence is proprietary.
Purification	Purified by antigen-affinity chromatography.
Conjugation	Unconjugated

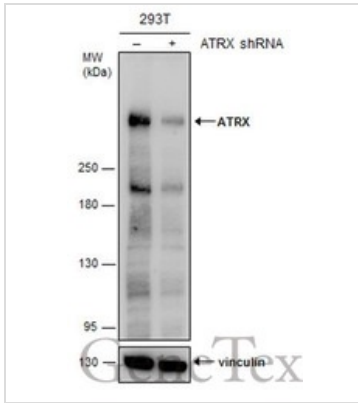


For full product information, images and publications, please visit our [website](#).

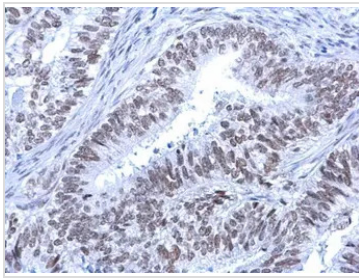
For laboratory research use only. Not for any clinical, therapeutic, or diagnostic use in humans or animals. Not for animal or human consumption.

Note

Purchasers shall not, and agree not to enable third parties to, analyze, copy, reverse engineer or otherwise attempt to determine the structure or sequence of the product.

DATA IMAGES

GTKX101310 WB Image

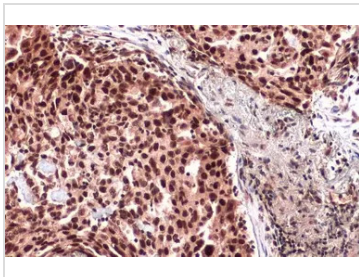
Non-transfected (-) and transfected (+) 293T whole cell extracts (30 µg) were separated by 5% SDS-PAGE, and the membrane was blotted with ATRX antibody [C3], C-term (GTKX101310) diluted at 1:2000. The HRP-conjugated anti-rabbit IgG antibody (GTKX213110-01) was used to detect the primary antibody.


GTKX101310 IHC-P Image

Rad54 antibody [C3], C-term detects Rad54 protein at nucleus on human endometrial carcinoma by immunohistochemical analysis.

Sample: Paraffin-embedded human endometrial carcinoma.

Rad54 antibody [C3], C-term (GTKX101310) dilution: 1:500.

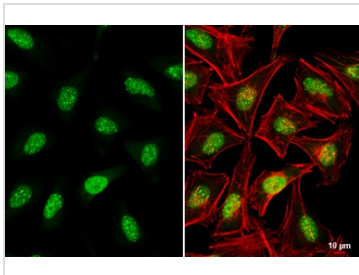

GTKX101310 IHC-P Image

ATRX antibody [C3], C-term detects ATRX protein at cytoplasm and nucleus by immunohistochemical analysis.

Sample: Paraffin-embedded human lung cancer.

ATRX stained by ATRX antibody [C3], C-term (GTKX101310) diluted at 1:500.

Antigen Retrieval: Citrate buffer, pH 6.0, 15 min


GTKX101310 ICC/IF Image

ATRX antibody [C3], C-term detects ATRX protein at nucleus by immunofluorescent analysis.

Sample: HeLa cells were fixed in 4% paraformaldehyde at RT for 15 min.

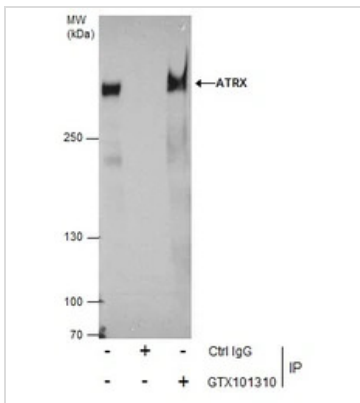
Green: ATRX stained by ATRX antibody [C3], C-term (GTKX101310) diluted at 1:1000.

Red: phalloidin, a cytoskeleton marker, diluted at 1:200.

Scale bar= 10 µm.



For full product information, images and publications, please visit our [website](#).

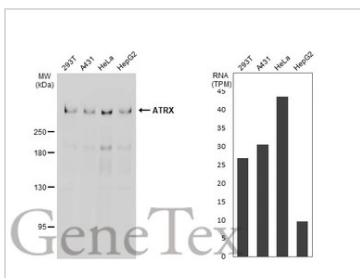


GTK101310 IP Image

Immunoprecipitation of ATRX protein from 293T whole cell extracts using 5 µg of ATRX antibody [C3], C-term (GTK101310).

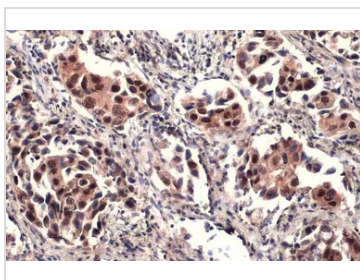
Western blot analysis was performed using ATRX antibody [C3], C-term (GTK101310).

EasyBlot anti-Rabbit IgG (GTK221666-01) was used as a secondary reagent.



GTK101310 WB Image

Various whole cell extracts (30 µg) were separated by 5% SDS-PAGE, and the membrane was blotted with ATRX antibody [C3], C-term (GTK101310) diluted at 1:1000. The HRP-conjugated anti-rabbit IgG antibody (GTK213110-01) was used to detect the primary antibody. Corresponding RNA expression data for the same cell lines are based on Human Protein Atlas program.



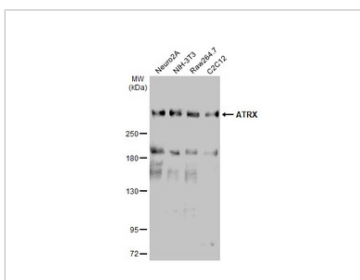
GTK101310 IHC-P Image

ATRX antibody [C3], C-term detects ATRX protein at cytoplasm and nucleus by immunohistochemical analysis.

Sample: Paraffin-embedded human lung cancer.

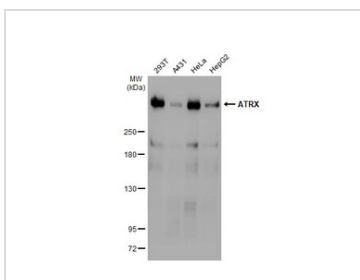
ATRX stained by ATRX antibody [C3], C-term (GTK101310) diluted at 1:2500.

Antigen Retrieval: Citrate buffer, pH 6.0, 15 min



GTK101310 WB Image

Various whole cell extracts (30 µg) were separated by 5% SDS-PAGE, and the membrane was blotted with ATRX antibody [C3], C-term (GTK101310) diluted at 1:1000. The HRP-conjugated anti-rabbit IgG antibody (GTK213110-01) was used to detect the primary antibody.

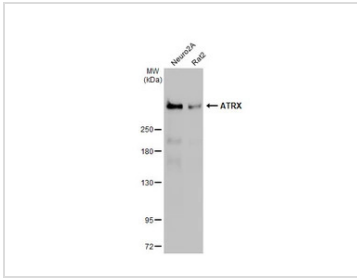


GTK101310 WB Image

Various whole cell extracts (30 µg) were separated by 5% SDS-PAGE, and the membrane was blotted with ATRX antibody [C3], C-term (GTK101310) diluted at 1:1000. The HRP-conjugated anti-rabbit IgG antibody (GTK213110-01) was used to detect the primary antibody.

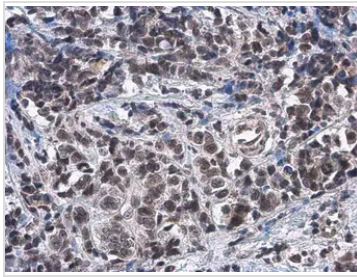


For full product information, images and publications, please visit our [website](https://www.genetex.com).



GTX101310 WB Image

Various whole cell extracts (30 µg) were separated by 5% SDS-PAGE, and the membrane was blotted with ATRX antibody [C3], C-term (GTX101310) diluted at 1:1000. The HRP-conjugated anti-rabbit IgG antibody (GTX213110-01) was used to detect the primary antibody.



GTX101310 IHC-P Image

ATRX antibody [C3], C-term detects ATRX protein at nucleus by immunohistochemical analysis.

Sample: Paraffin-embedded human breast carcinoma.

ATRX stained by ATRX antibody [C3], C-term (GTX101310) diluted at 1:2000.

Antigen Retrieval: Citrate buffer, pH 6.0, 15 min



For full product information, images and publications, please visit our [website](https://www.genetex.com).

RPA70 antibody [C1C3]

Cat. No. GTX108749

Host	Rabbit
Clonality	Polyclonal
Isotype	IgG
Application	WB, ICC/IF, IHC-P, IP
Reactivity	Human, Mouse

Reference (3)

★★★★★ Review (1)

Package

100 µl, 25 µl

APPLICATION

Application Note

*Optimal dilutions/concentrations should be determined by the researcher.

Suggested dilution	Recommended dilution
WB	1:500-1:3000
ICC/IF	1:100-1:1000
IHC-P	1:100-1:1000
IP	1:100-1:500

Not tested in other applications.

Calculated MW 68 kDa. ([Note](#))

PROPERTIES

Form	Liquid
Buffer	PBS, 1% BSA, 20% Glycerol
Preservative	0.025% ProClin 300
Storage	Store as concentrated solution. Centrifuge briefly prior to opening vial. For short-term storage (1-2 weeks), store at 4°C. For long-term storage, aliquot and store at -20°C or below. Avoid multiple freeze-thaw cycles.
Concentration	0.4 mg/ml (Please refer to the vial label for the specific concentration.)
Immunogen	Recombinant protein encompassing a sequence within the C-terminus region of human RPA70. The exact sequence is proprietary.
Purification	Purified by antigen-affinity chromatography.
Conjugation	Unconjugated



For full product information, images and publications, please visit our [website](#).

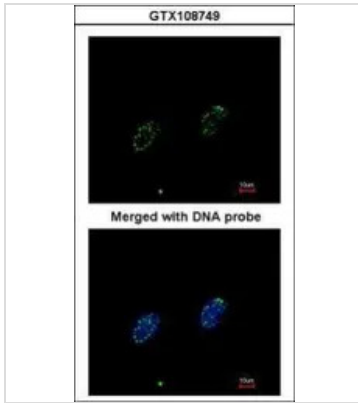
Date 2024 / 05 / 03 Page 6 of 27

For laboratory research use only. Not for any clinical, therapeutic, or diagnostic use in humans or animals. Not for animal or human consumption.

Note

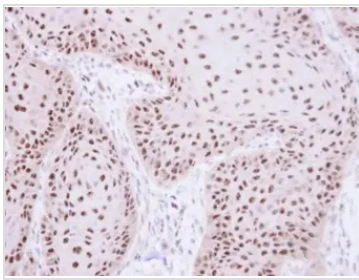
Purchasers shall not, and agree not to enable third parties to, analyze, copy, reverse engineer or otherwise attempt to determine the structure or sequence of the product.

DATA IMAGES



GTX108749 ICC/IF Image

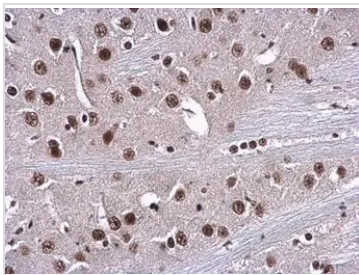
Immunofluorescence analysis of paraformaldehyde-fixed HeLa, using RPA 70 kDa subunit (GTX108749) antibody at 1:200 dilution.



GTX108749 IHC-P Image

Immunohistochemical analysis of paraffin-embedded Cal27 xenograft, using RPA 70 kDa subunit (GTX108749) antibody at 1:100 dilution.

Antigen Retrieval: Trilogy™ (EDTA based, pH 8.0) buffer, 15min



GTX108749 IHC-P Image

RPA70 antibody [C1C3] detects RPA1 protein at nucleus in mouse brain by immunohistochemical analysis.

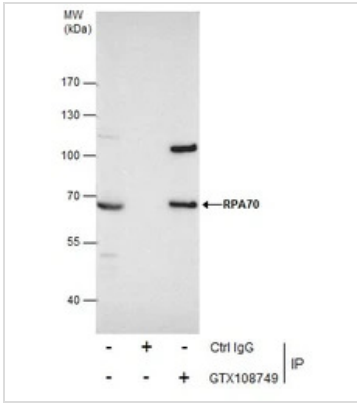
Sample: Paraffin-embedded mouse brain.

RPA70 antibody [C1C3] (GTX108749) diluted at 1:500.

Antigen Retrieval: Citrate buffer, pH 6.0, 15 min



For full product information, images and publications, please visit our [website](https://www.genetex.com).

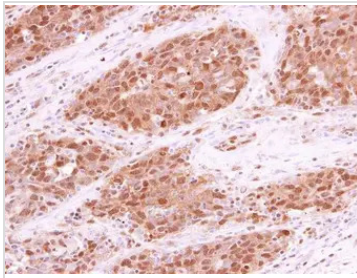


GTx108749 IP Image

Immunoprecipitation of RPA70 protein from 293T whole cell extracts using 5 µg of RPA70 antibody [C1C3] (GTx108749).

Western blot analysis was performed using RPA70 antibody [C1C3] (GTx108749).

EasyBlot anti-Rabbit IgG (GTx221666-01) was used as a secondary reagent.



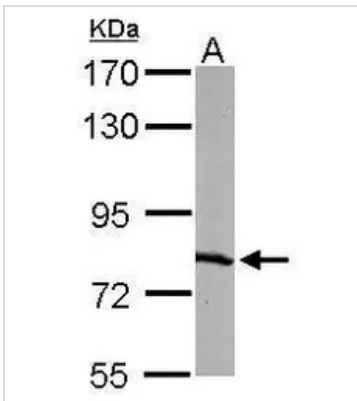
GTx108749 IHC-P Image

RPA70 antibody [C1C3] detects RPA70 protein at cytoplasm and nucleus in human lung papillary adenocarcinoma by immunohistochemical analysis.

Sample: Paraffin-embedded human lung papillary adenocarcinoma.

RPA70 antibody [C1C3] (GTx108749) diluted at 1:250.

Antigen Retrieval: Citrate buffer, pH 6.0, 15 min



GTx108749 WB Image

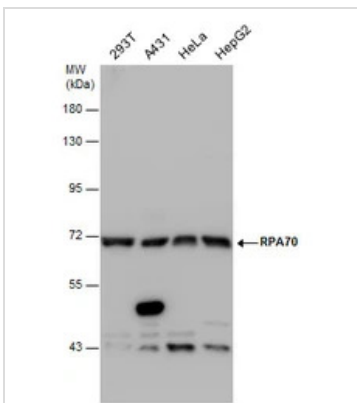
Sample (50 µg of whole cell lysate)

A: mouse liver

7.5% SDS PAGE

GTx108749 diluted at 1:1000

The HRP-conjugated anti-rabbit IgG antibody (GTx213110-01) was used to detect the primary antibody.



GTx108749 WB Image

RPA70 antibody [C1C3] detects RPA70 protein by Western blot analysis. Various whole cell extracts (30 µg) were separated by 7.5% SDS-PAGE, and the membrane was blotted with RPA70 antibody [C1C3]

(GTx108749) diluted at 1:1000.



For full product information, images and publications, please visit our [website](https://www.genetex.com).

RAD54B antibody [N1N2], N-term

Cat. No. GTX113950

Host	Rabbit
Clonality	Polyclonal
Isotype	IgG
Application	WB
Reactivity	Human

Package
100 µl, 25 µl

APPLICATION

Application Note

*Optimal dilutions/concentrations should be determined by the researcher.

Suggested dilution	Recommended dilution
WB	1:500-1:3000

Not tested in other applications.

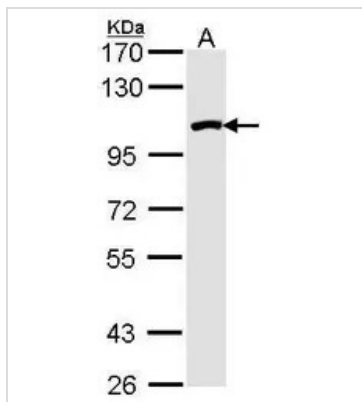
PROPERTIES

Form	Liquid
Buffer	0.1M Tris, 0.1M Glycine, 20% Glycerol
Preservative	0.01% Thimerosal
Storage	Store as concentrated solution. Centrifuge briefly prior to opening vial. For short-term storage (1-2 weeks), store at 4°C. For long-term storage, aliquot and store at -20°C or below. Avoid multiple freeze-thaw cycles.
Concentration	1 mg/ml (Please refer to the vial label for the specific concentration.)
Immunogen	Recombinant protein encompassing a sequence within the N-terminus region of human RAD54B. The exact sequence is proprietary.
Purification	Purified by antigen-affinity chromatography.
Conjugation	Unconjugated
Note	For laboratory research use only. Not for any clinical, therapeutic, or diagnostic use in humans or animals. Not for animal or human consumption. Purchasers shall not, and agree not to enable third parties to, analyze, copy, reverse engineer or otherwise attempt to determine the structure or sequence of the product.



For full product information, images and publications, please visit our [website](#).

DATA IMAGES



GTx113950 WB Image

Sample (30 ug of whole cell lysate)

A: Molt-4 (GTx27912)

7.5% SDS PAGE

GTx113950 diluted at 1:1000



For full product information, images and publications, please visit our [website](https://www.genetex.com).

RAD51AP1 antibody [N1C1]

Cat. No. GTX115455

Host	Rabbit
Clonality	Polyclonal
Isotype	IgG
Application	WB
Reactivity	Human

Reference (2)
Package
100 µl, 25 µl

APPLICATION

Application Note

*Optimal dilutions/concentrations should be determined by the researcher.

Suggested dilution	Recommended dilution
WB	1:500-1:3000
Not tested in other applications.	

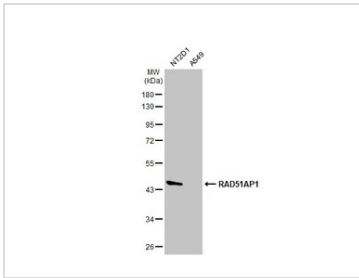
Calculated MW 38 kDa. ([Note](#))

PROPERTIES

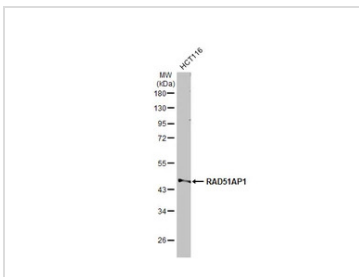
Form	Liquid
Buffer	0.1M Tris, 0.1M Glycine, 20% Glycerol
Preservative	0.01% Thimerosal
Storage	Store as concentrated solution. Centrifuge briefly prior to opening vial. For short-term storage (1-2 weeks), store at 4°C. For long-term storage, aliquot and store at -20°C or below. Avoid multiple freeze-thaw cycles.
Concentration	0.61 mg/ml (Please refer to the vial label for the specific concentration.)
Immunogen	Recombinant protein encompassing a sequence within the center region of human RAD51AP1. The exact sequence is proprietary.
Purification	Purified by antigen-affinity chromatography.
Conjugation	Unconjugated
Note	<p>For laboratory research use only. Not for any clinical, therapeutic, or diagnostic use in humans or animals. Not for animal or human consumption.</p> <p>Purchasers shall not, and agree not to enable third parties to, analyze, copy, reverse engineer or otherwise attempt to determine the structure or sequence of the product.</p>



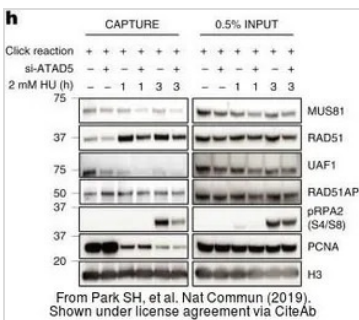
For full product information, images and publications, please visit our [website](#).

DATA IMAGES

GTX115455 WB Image

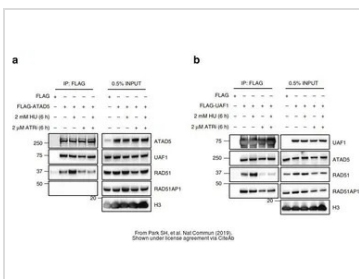
Various whole cell extracts (30 µg) were separated by 10% SDS-PAGE, and the membrane was blotted with RAD51AP1 antibody [N1C1] (GTX115455) diluted at 1:1000. The HRP-conjugated anti-rabbit IgG antibody (GTX213110-01) was used to detect the primary antibody.


GTX115455 WB Image

Whole cell extract (30 µg) was separated by 10% SDS-PAGE, and the membrane was blotted with RAD51AP1 antibody [N1C1] (GTX115455) diluted at 1:1000. The HRP-conjugated anti-rabbit IgG antibody (GTX213110-01) was used to detect the primary antibody, and the signal was developed with Trident ECL plus-Enhanced.


GTX115455 WB Image

The data was published in the journal Nat Commun in 2019. [PMID: 31844045](https://pubmed.ncbi.nlm.nih.gov/31844045/)


GTX115455 WB Image

The data was published in the journal Nat Commun in 2019. [PMID: 31844045](https://pubmed.ncbi.nlm.nih.gov/31844045/)



For full product information, images and publications, please visit our [website](https://www.genetex.com).

Goat Anti-Mouse IgG antibody (HRP)

Cat. No. GTX213111-01

Host	Goat
Clonality	Polyclonal
Isotype	IgG
Application	WB, IHC-P, ELISA, IHC
Reactivity	Mouse

Reference (356)

Package

1 ml

APPLICATION

Application Note

*Optimal dilutions/concentrations should be determined by the researcher.

Suggested dilution	Recommended dilution
WB	Assay dependent
IHC-P	1:100-1:1000
ELISA	Assay dependent
IHC	Assay dependent

Not tested in other applications.

PROPERTIES

Form	Liquid
Buffer	0.05M Tris, 0.15M NaCl, 1%BSA
Preservative	0.025% ProClin 300
Storage	Store as concentrated solution. Centrifuge briefly prior to opening vial. For short-term storage (1-2 weeks), store at 4°C. For long-term storage, aliquot and store at -20°C or below. Avoid multiple freeze-thaw cycles.
Concentration	0.25 mg/ml (Please refer to the vial label for the specific concentration.)
Immunogen	Highly purified whole mouse IgG
Purification	Purified by antigen-affinity chromatography.
Conjugation	Horseradish peroxidase(HRP)

Note

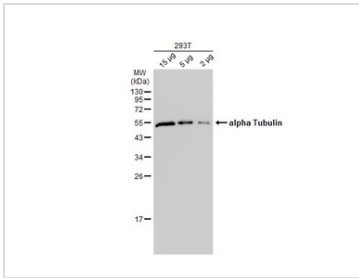
For laboratory research use only. Not for any clinical, therapeutic, or diagnostic use in humans or animals. Not for animal or human consumption.

Purchasers shall not, and agree not to enable third parties to, analyze, copy, reverse engineer or otherwise attempt to determine the structure or sequence of the product.



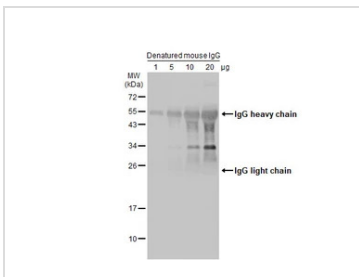
For full product information, images and publications, please visit our [website](#).

DATA IMAGES



GTX213111-01 WB Image

Various whole cell extracts were separated by 12% SDS-PAGE, and the membrane was blotted with alpha Tubulin antibody [GT114] (GTX628802) diluted at 1:10000. The HRP-conjugated anti-mouse IgG antibody (GTX213111-01) was used to detect the primary antibody.



GTX213111-01 WB Image

Various amounts of denatured mouse IgG protein were separated by 12% SDS-PAGE, and the membrane was blotted with HRP-conjugated anti-rabbit IgG antibody (GTX213110-01) diluted at 1:5000.



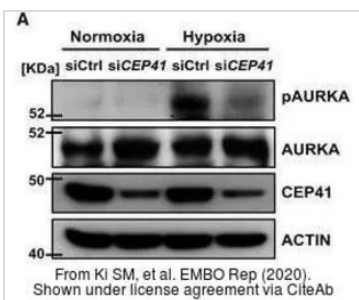
GTX213111-01 IHC-P Image

E2F1 antibody [16G7] detects E2F1 protein at nucleus in mouse cervix by immunohistochemical analysis. Sample: Paraffin-embedded mouse cervix.

E2F1 antibody [16G7] (GTX70163) diluted at 1:500.

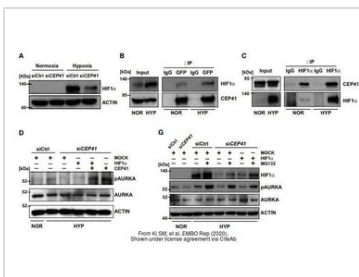
The signal was developed by Mouse IgG antibody (HRP) (GTX213111-01).

Antigen Retrieval: Citrate buffer, pH 6.0, 15 min



GTX213111-01 WB Image

The data was published in the journal EMBO Rep in 2020. [PMID: 31885126](https://pubmed.ncbi.nlm.nih.gov/31885126/)

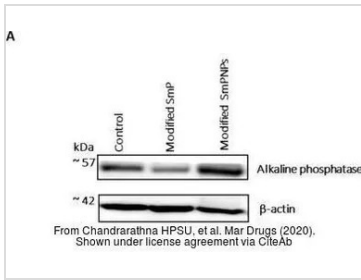


GTX213111-01 WB Image

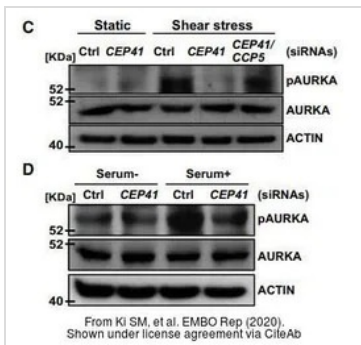
The data was published in the journal EMBO Rep in 2020. [PMID: 31885126](https://pubmed.ncbi.nlm.nih.gov/31885126/)



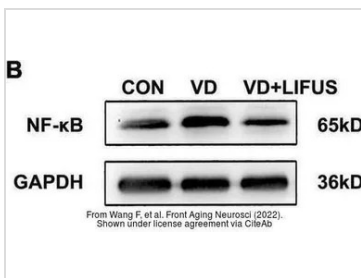
For full product information, images and publications, please visit our [website](https://www.genetex.com).


GTx213111-01 WB Image

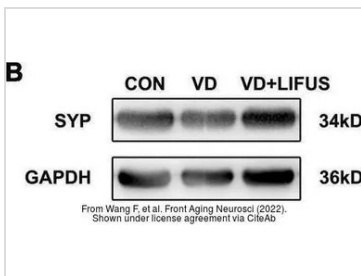
The data was published in the journal Mar Drugs in 2020. [PMID: 32245246](#)


GTx213111-01 WB Image

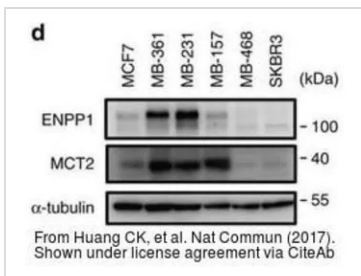
The data was published in the journal EMBO Rep in 2020. [PMID: 31885126](#)


GTx213111-01 WB Image

The data was published in the 2022 in Front Aging Neurosci. [PMID: 35264943](#)


GTx213111-01 WB Image

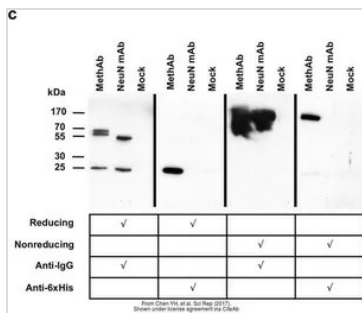
The data was published in the 2022 in Front Aging Neurosci. [PMID: 35264943](#)


GTx213111-01 WB Image

The data was published in the 2017 in Nat Commun. [PMID: 28281525](#)

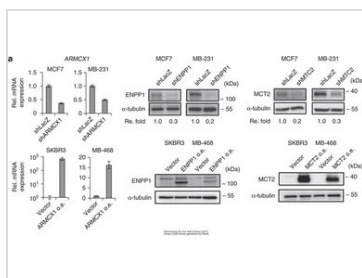


For full product information, images and publications, please visit our [website](#).



GTx213111-01 WB Image

The data was published in the 2017 in Sci Rep. [PMID: 28387350](https://pubmed.ncbi.nlm.nih.gov/28387350/)



GTx213111-01 WB Image

The data was published in the 2017 in Nat Commun. [PMID: 28281525](https://pubmed.ncbi.nlm.nih.gov/28281525/)



For full product information, images and publications, please visit our [website](https://www.genetex.com).

BRCA2 antibody [5F6]

Cat. No. GTX70123

Host	Mouse
Clonality	Monoclonal
Isotype	IgG1
Application	WB, IHC-P, IHC-Fr
Reactivity	Human

Reference (4)
Package
100 µl

APPLICATION

Application Note

Do not boil samples for longer than two minutes. For WB: Use at a concentration of 1-5 µg/ml. Predicted molecular weight: 380 kDa. Optimal dilutions/concentrations should be determined by the researcher.

Calculated MW 384 kDa. ([Note](#))

PROPERTIES

Form	Liquid
Buffer	PBS
Preservative	No Preservative
Storage	Store as concentrated solution. Centrifuge briefly prior to opening vial. For short-term storage (1-2 weeks), store at 4°C. For long-term storage, aliquot and store at -20°C or below. Avoid multiple freeze-thaw cycles.
Concentration	1 mg/ml (Please refer to the vial label for the specific concentration.)
Immunogen	Amino acids 2336-2478 of human BRCA2 expressed in E. coli. BRCA2-P400.
Purification	Protein G purified
Conjugation	Unconjugated

Note

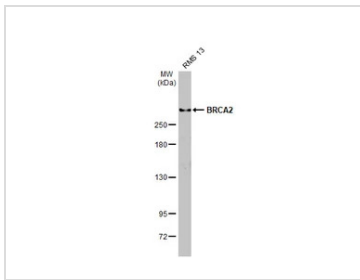
For laboratory research use only. Not for any clinical, therapeutic, or diagnostic use in humans or animals. Not for animal or human consumption.

Purchasers shall not, and agree not to enable third parties to, analyze, copy, reverse engineer or otherwise attempt to determine the structure or sequence of the product.



For full product information, images and publications, please visit our [website](#).

DATA IMAGES



GTX70123 WB Image

Whole cell extract (30 µg) was separated by 5% SDS-PAGE, and the membrane was blotted with BRCA2 antibody [5F6] (GTX70123) diluted at 1:1000. The HRP-conjugated anti-mouse IgG antibody (GTX213111-01) was used to detect the primary antibody, and the signal was developed with Trident ECL plus-Enhanced.



For full product information, images and publications, please visit our [website](https://www.genetex.com).

Rad51 antibody [14B4]

Cat. No. GTX70230

Host	Mouse
Clonality	Monoclonal
Isotype	IgG2a
Application	WB, ICC/IF, IHC-P, IP, IHC, PLA
Reactivity	Human, Mouse, Rat, Chicken

Reference (101)

★★★★☆ Review (1)

Package

100 µl

APPLICATION

Application Note

*Optimal dilutions/concentrations should be determined by the researcher.

Suggested dilution	Recommended dilution
WB	1:500-1:3000
ICC/IF	1:100-1:1000
IHC-P	1:100-1:1000
IP	Assay dependent
IHC	Assay dependent
PLA	Assay dependent

Not tested in other applications.

Calculated MW 37 kDa. ([Note](#))

PROPERTIES

Form	Liquid
Buffer	PBS
Preservative	No preservative
Storage	Store as concentrated solution. Centrifuge briefly prior to opening vial. For short-term storage (1-2 weeks), store at 4°C. For long-term storage, aliquot and store at -20°C or below. Avoid multiple freeze-thaw cycles.
Concentration	1 mg/ml (Please refer to the vial label for the specific concentration.)
Immunogen	Full length (amino acids 1-338) Rad51 expressed in E. coli.
Purification	Purified by antigen-affinity chromatography.
Conjugation	Unconjugated

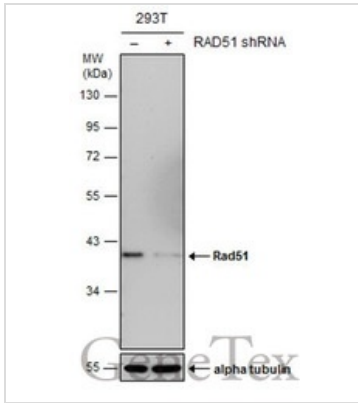


For full product information, images and publications, please visit our [website](#).

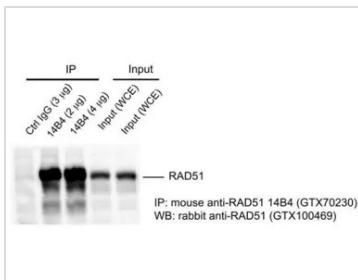
For laboratory research use only. Not for any clinical, therapeutic, or diagnostic use in humans or animals. Not for animal or human consumption.

Note

Purchasers shall not, and agree not to enable third parties to, analyze, copy, reverse engineer or otherwise attempt to determine the structure or sequence of the product.

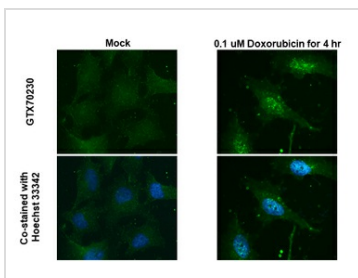
DATA IMAGES

GTX70230 WB Image

Non-transfected (–) and transfected (+) 293T whole cell extracts (30 µg) were separated by 10% SDS-PAGE, and the membrane was blotted with Rad51 antibody [14B4] (GTX70230) diluted at 1:500. The HRP-conjugated anti-mouse IgG antibody (GTX213111-01) was used to detect the primary antibody.


GTX70230 IP Image

Mouse anti-RAD51 14B4 antibody (GTX70230) was used in IP assay (immunoprecipitation) using HeLa cell extract prepared with lysis 180 buffer (40 mM Tris-HCl pH8.0, 180 mM NaCl, 1 mM EDTA, 0.5% NP-40). Rabbit anti-RAD51 antibody (GTX100469) was used for subsequent WB detection of immunoprecipitated RAD51.

Whole cell extract was used as input.

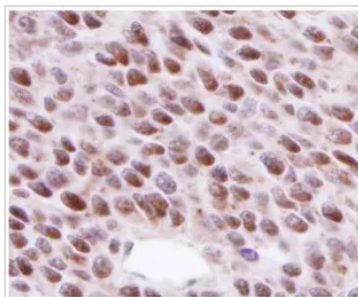

GTX70230 ICC/IF Image

Rad51 antibody [14B4] detects Rad51 protein at nuclear foci by immunofluorescent analysis.

Sample: Mock and treated HeLa cells were fixed in 4% paraformaldehyde at RT for 15 min.

Green: Rad51 stained by Rad51 antibody [14B4] (GTX70230) diluted at 1:500.

Blue: Fluoroshield with DAPI (GTX30920).


GTX70230 IHC-P Image

RAD51 antibody 14B4 (GTX70230) detects RAD51 in nucleus on BT483 xenograft by immunohistochemical analysis.

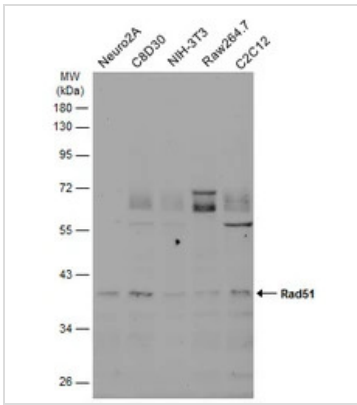
Sample: Paraffin-embedded BT483 xenograft.

RAD51 antibody 14B4 (GTX70230) dilution: 1:200.

Antigen Retrieval: Trilogy™ (EDTA based, pH 8.0) buffer, 15min

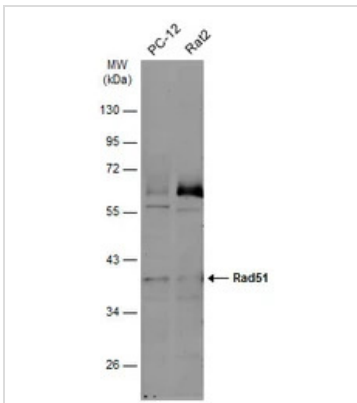


For full product information, images and publications, please visit our [website](https://www.genetex.com).



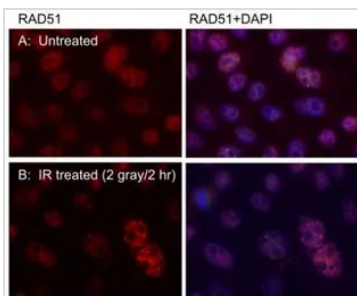
GTx70230 WB Image

Various whole cell extracts (30 µg) were separated by 10% SDS-PAGE, and the membrane was blotted with Rad51 antibody [14B4] (GTx70230) diluted at 1:500. The HRP-conjugated anti-mouse IgG antibody (GTx213111-01) was used to detect the primary antibody, and the signal was developed with Trident ECL plus-Enhanced.



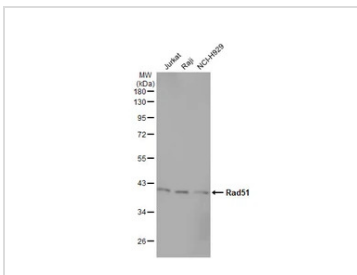
GTx70230 WB Image

Various whole cell extracts (30 µg) were separated by 10% SDS-PAGE, and the membrane was blotted with Rad51 antibody [14B4] (GTx70230) diluted at 1:500. The HRP-conjugated anti-mouse IgG antibody (GTx213111-01) was used to detect the primary antibody, and the signal was developed with Trident ECL plus-Enhanced.



GTx70230 ICC/IF Image

Immunofluorescent staining of RAD51 nuclear foci in U2OS cells using RAD51 14B4 antibody (GTx70230). Cells were pre-extracted with CSK buffer before fixation with 4% PFA. RAD51 14B4 was used at 1:1000 dilution. DAPI was used to counterstain the nucleus. Scale bar, 10 micro-meter.

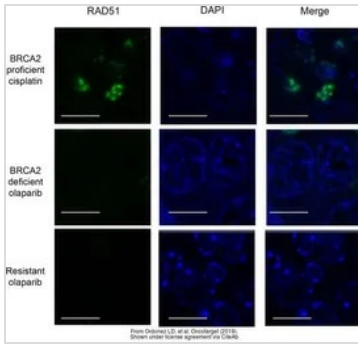


GTx70230 WB Image

Various whole cell extracts (30 µg) were separated by 10% SDS-PAGE, and the membrane was blotted with Rad51 antibody [14B4] (GTx70230) diluted at 1:500. The HRP-conjugated anti-mouse IgG antibody (GTx213111-01) was used to detect the primary antibody, and the signal was developed with Trident ECL plus-Enhanced.

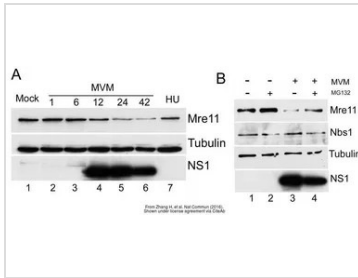


For full product information, images and publications, please visit our [website](https://www.genetex.com).



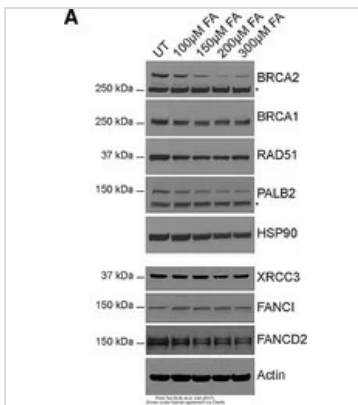
GTx70230 IHC Image

The data was published in the journal Oncotarget in 2019. [PMID: 31080552](#)



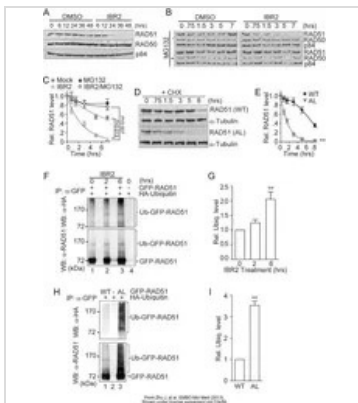
GTx70230 ICC/IF Image

The data was published in the journal Nat Commun in 2016. [PMID: 26727879](#)



GTx70230 WB Image

The data was published in the 2017 in Cell. [PMID: 28575672](#)

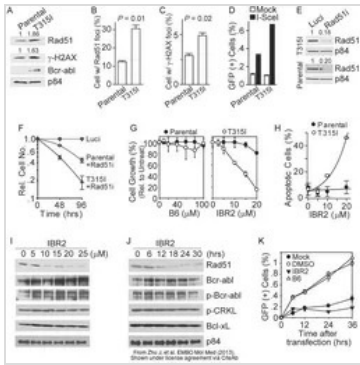


GTx70230 WB Image

The data was published in the journal EMBO Mol Med in 2013. [PMID: 23341130](#)

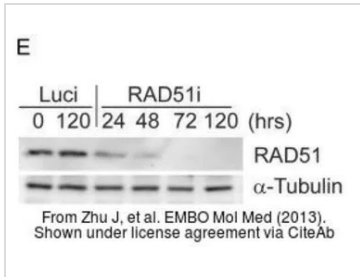


For full product information, images and publications, please visit our [website](#).



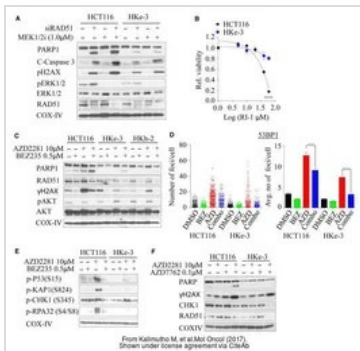
GTX70230 WB Image

The data was published in the journal EMBO Mol Med in 2013. [PMID: 23341130](#)



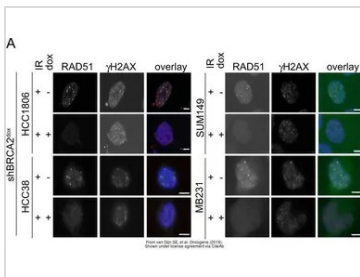
GTX70230 WB Image

The data was published in the journal EMBO Mol Med in 2013. [PMID: 23341130](#)



GTX70230 WB Image

The data was published in the journal Mol Oncol in 2017. [PMID: 28173629](#)

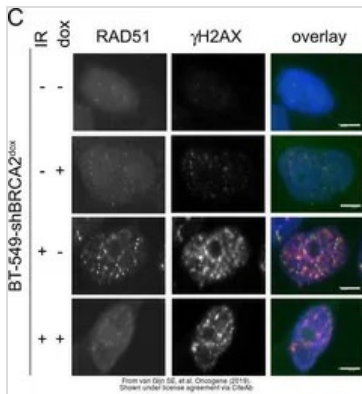


GTX70230 ICC/IF Image

The data was published in the journal Oncogene in 2019. [PMID: 30177840](#)

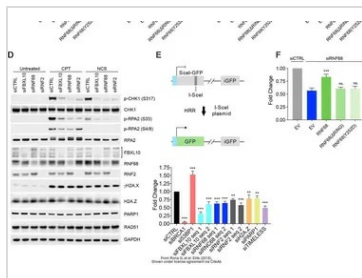


For full product information, images and publications, please visit our [website](#).



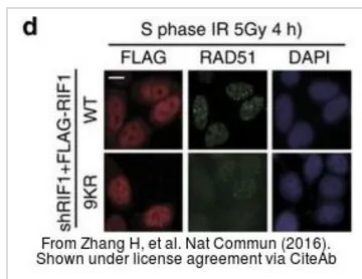
GTx70230 ICC/IF Image

The data was published in the journal Oncogene in 2019. [PMID: 30177840](#)



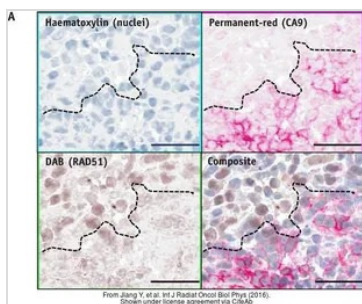
GTx70230 WB Image

The data was published in the journal Elife in 2018. [PMID: 29985131](#)



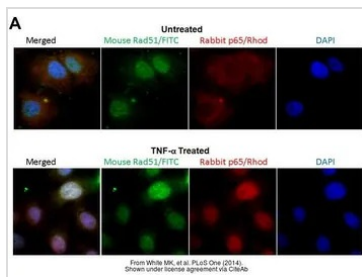
GTx70230 ICC/IF Image

The data was published in the journal Nat Commun in 2016. [PMID: 26727879](#)



GTx70230 IHC-P Image

The data was published in the journal Int J Radiat Oncol Biol Phys in 2016. [PMID: 27020103](#)

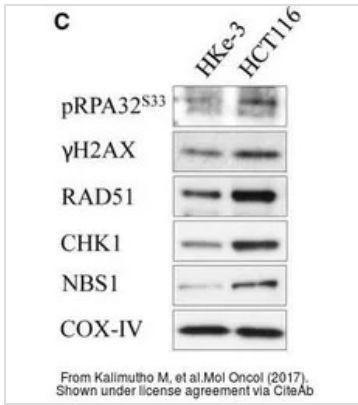


GTx70230 ICC/IF Image

The data was published in the journal PLoS One in 2014. [PMID: 25310191](#)

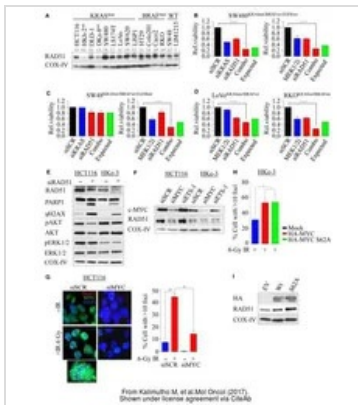


For full product information, images and publications, please visit our [website](#).



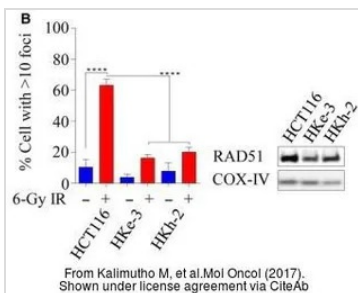
GTx70230 WB Image

The data was published in the journal Mol Oncol in 2017. [PMID: 28173629](#)



GTx70230 WB Image

The data was published in the journal Mol Oncol in 2017. [PMID: 28173629](#)



GTx70230 WB Image

The data was published in the journal Mol Oncol in 2017. [PMID: 28173629](#)



For full product information, images and publications, please visit our [website](#).

Rad52 antibody [5H9]

Cat. No. GTX70301

Host	Mouse
Clonality	Monoclonal
Isotype	IgG1
Application	WB
Reactivity	Human

Reference (3)
Package
100 µl

APPLICATION

Application Note

*Optimal dilutions/concentrations should be determined by the researcher.

Suggested dilution	Recommended dilution
WB	1:500-1:3000
Not tested in other applications.	

Calculated MW 46 kDa. ([Note](#))

PROPERTIES

Form	Liquid
Buffer	1XPBS pH7, 20% Glycerol
Preservative	No Preservative
Storage	Store as concentrated solution. Centrifuge briefly prior to opening vial. For short-term storage (1-2 weeks), store at 4°C. For long-term storage, aliquot and store at -20°C or below. Avoid multiple freeze-thaw cycles.
Concentration	1 mg/ml (Please refer to the vial label for the specific concentration.)
Immunogen	Human Rad52 recombinant protein expressed in E. coli.
Purification	Protein G purified
Conjugation	Unconjugated

Note

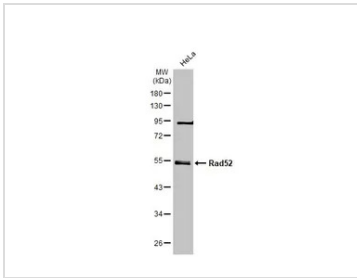
For laboratory research use only. Not for any clinical, therapeutic, or diagnostic use in humans or animals. Not for animal or human consumption.

Purchasers shall not, and agree not to enable third parties to, analyze, copy, reverse engineer or otherwise attempt to determine the structure or sequence of the product.



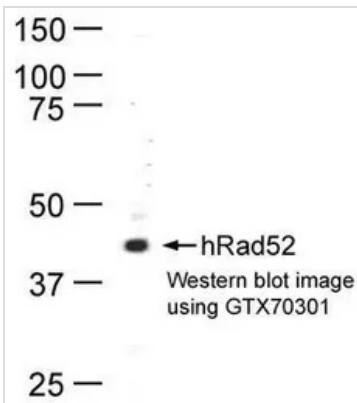
For full product information, images and publications, please visit our [website](#).

DATA IMAGES



GTX70301 WB Image

Whole cell extract (30 µg) was separated by 10% SDS-PAGE, and the membrane was blotted with Rad52 antibody [5H9] (GTX70301) diluted at 1:500. The HRP-conjugated anti-mouse IgG antibody (GTX213111-01) was used to detect the primary antibody, and the signal was developed with Trident ECL plus-Enhanced.



GTX70301 WB Image

Western blot experiment using Rad52 antibody (GTX70301) to detect human Rad52 protein expression in HeLa whole cell lysate



For full product information, images and publications, please visit our [website](https://www.genetex.com).