

# GTX300019

## Mismatch Repair Antibody Panel

### Product Content

Cat No	Product Name	Reactivity	Applications	Package
GTX101160	MLH1 antibody	Human	WB, ICC/IF	25 µl
GTX104052	RFC4 antibody [N1C3]	Human, Mouse	WB, ICC/IF, IHC-P	25 µl
GTX105087	RFC2 antibody	Human	WB, ICC/IF	25 µl
GTX113804	PMS2 antibody [N1N3]	Human	WB, IP	25 µl
GTX213110-01	Goat Anti-Rabbit IgG antibody (HRP)	Rabbit	WB, IHC-P, ELISA	25 µl
GTX637858	PCNA antibody [HL1965]	Human, Mouse, Rat, Zebrafish, Cat, Dog	WB, IHC-P	25 µl
GTX637963	HMGB1 antibody [HL2059]	Human, Mouse, Rat, Cat, Dog	WB, ICC/IF, IHC-P, ELISA	25 µl

### Note

For In vitro laboratory use only. Not for any clinical, therapeutic, or diagnostic use in humans or animals. Not for animal or human consumption.



For full product information, images and publications, please visit our [website](#).

## MLH1 antibody

Cat. No. GTX101160

Host	Rabbit
Clonality	Polyclonal
Isotype	IgG
Applications	WB, ICC/IF
Reactivity	Human

Package  
100 µl, 25 µl

## Applications

## Application Note

\*Optimal dilutions/concentrations should be determined by the researcher.

Suggested dilution	Recommended dilution
WB	1:500-1:20000
ICC/IF	1:100-1:1000

Not tested in other applications.

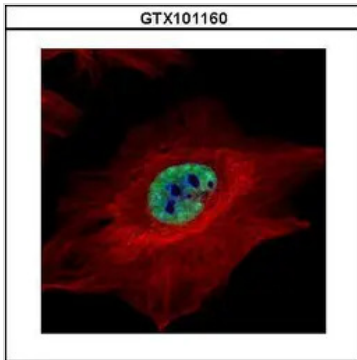
Calculated MW 85 kDa. ( [Note](#) )

## Properties

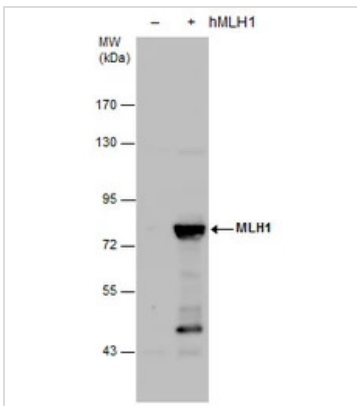
Form	Liquid
Buffer	PBS, 1% BSA, 20% Glycerol
Preservative	0.01% Thimerosal
Storage	Store as concentrated solution. Centrifuge briefly prior to opening vial. For short-term storage (1-2 weeks), store at 4°C. For long-term storage, aliquot and store at -20°C or below. Avoid multiple freeze-thaw cycles.
Concentration	0.94 mg/ml (Please refer to the vial label for the specific concentration.)
Immunogen	Recombinant protein encompassing a sequence within the center region of human MLH1. The exact sequence is proprietary.
Purification	Purified by antigen-affinity chromatography.
Conjugation	Unconjugated
Note	<p>For laboratory research use only. Not for any clinical, therapeutic, or diagnostic use in humans or animals. Not for animal or human consumption.</p> <p>Purchasers shall not, and agree not to enable third parties to, analyze, copy, reverse engineer or otherwise attempt to determine the structure or sequence of the product.</p>



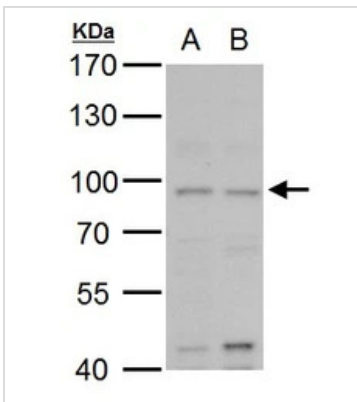
For full product information, images and publications, please visit our [website](#).

**DATA IMAGES**

**GTX101160 ICC/IF Image**

Confocal immunofluorescence analysis (Olympus FV10i) of paraformaldehyde-fixed HeLa, using MLH1(GTX101160) antibody (Green) at 1:500 dilution. Alpha-tubulin filaments were labeled with GTX11304 (Red) at 1:2000.


**GTX101160 WB Image**

MLH1 antibody detects MLH1 protein by western blot analysis. Non-transfected (-) and MLH1-transfected (+, ) 293T whole cell extracts (30 µg) were separated by 7.5% SDS-PAGE, and the membrane was blotted with MLH1 antibody (GTX101160) at a dilution of 1:20000.


**GTX101160 WB Image**

MLH1 antibody detects MLH1 protein by western blot analysis.

A. 30 µg A549 whole cell lysate/extract

B. 30 µg H1299 whole cell lysate/extract

7.5 % SDS-PAGE

MLH1 antibody (GTX101160) dilution: 1:500



For full product information, images and publications, please visit our [website](http://www.genetex.com).

## RFC4 antibody [N1C3]

Cat. No. GTX104052

Host	Rabbit
Clonality	Polyclonal
Isotype	IgG
Applications	WB, ICC/IF, IHC-P
Reactivity	Human, Mouse

References ( 2 )

Package

100 µl, 25 µl

## Applications

## Application Note

\*Optimal dilutions/concentrations should be determined by the researcher.

Suggested dilution	Recommended dilution
WB	1:500-1:3000
ICC/IF	1:100-1:1000
IHC-P	1:100-1:1000

Not tested in other applications.

Calculated MW 40 kDa. ( [Note](#) )

## Properties

Form	Liquid
Buffer	0.1M Tris, 0.1M Glycine, 10% Glycerol
Preservative	0.01% Thimerosal
Storage	Store as concentrated solution. Centrifuge briefly prior to opening vial. For short-term storage (1-2 weeks), store at 4°C. For long-term storage, aliquot and store at -20°C or below. Avoid multiple freeze-thaw cycles.
Concentration	0.62 mg/ml (Please refer to the vial label for the specific concentration.)
Immunogen	Recombinant protein encompassing a sequence within the center region of human RFC4. The exact sequence is proprietary.
Purification	Purified by antigen-affinity chromatography.
Conjugation	Unconjugated

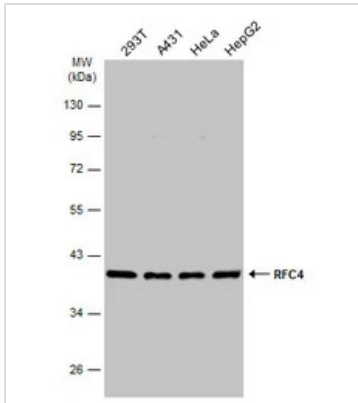
## Note

For laboratory research use only. Not for any clinical, therapeutic, or diagnostic use in humans or animals. Not for animal or human consumption.

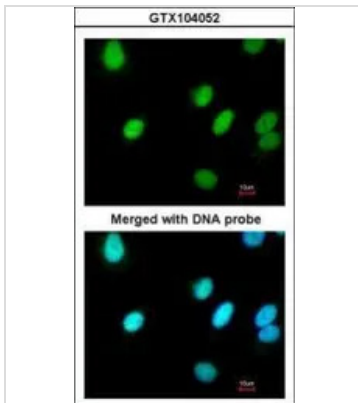
Purchasers shall not, and agree not to enable third parties to, analyze, copy, reverse engineer or otherwise attempt to determine the structure or sequence of the product.



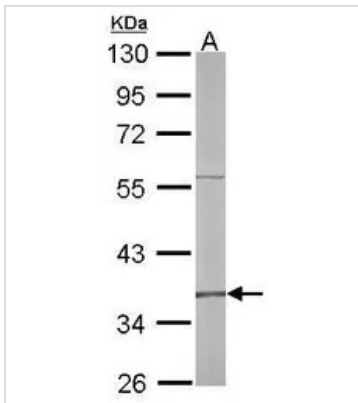
For full product information, images and publications, please visit our [website](#).

**DATA IMAGES**

**GTKX104052 WB Image**

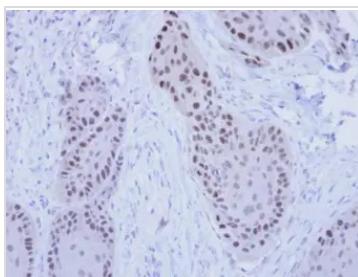
Various whole cell extracts (30 µg) were separated by 10% SDS-PAGE, and the membrane was blotted with RFC4 antibody [N1C3] (GTKX104052) diluted at 1:500. The HRP-conjugated anti-rabbit IgG antibody (GTKX213110-01) was used to detect the primary antibody.


**GTKX104052 ICC/IF Image**

Immunofluorescence analysis of paraformaldehyde-fixed A549, using RFC4(GTKX104052) antibody at 1:200 dilution.


**GTKX104052 WB Image**

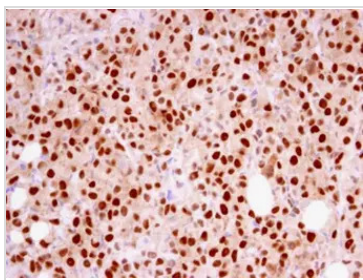
Sample (50 ug of whole cell lysate)  
A: mouse liver  
10% SDS PAGE  
GTKX104052 diluted at 1:500


**GTKX104052 IHC-P Image**

Immunohistochemical analysis of paraffin-embedded MDAMB-468 Xenograft, using RFC4(GTKX104052) antibody at 1:100 dilution.  
Antigen Retrieval: Citrate buffer, pH 6.0, 15 min



For full product information, images and publications, please visit our [website](#).



## GTX104052 IHC-P Image

RFC4 antibody [N1C3] detects RFC4 protein at nucleus by immunohistochemical analysis.

Sample: Paraffin-embedded MDA-MB-231 xenograft.

RFC4 antibody [N1C3] (GTX104052) diluted at 1:250.

Antigen Retrieval: Citrate buffer, pH 6.0, 15 min



For full product information, images and publications, please visit our [website](#).

## RFC2 antibody

**Cat. No. GTX105087**

<b>Host</b>	Rabbit
<b>Clonality</b>	Polyclonal
<b>Isotype</b>	IgG
<b>Applications</b>	WB, ICC/IF
<b>Reactivity</b>	Human

References ( 1 )

Package

100 µl, 25 µl

## Applications

## Application Note

\*Optimal dilutions/concentrations should be determined by the researcher.

Suggested dilution	Recommended dilution
WB	1:500-1:3000
ICC/IF	1:100-1:1000

Not tested in other applications.

**Calculated MW** 39 kDa. ( [Note](#) )

## Properties

<b>Form</b>	Liquid
<b>Buffer</b>	0.1M Tris, 0.1M Glycine, 10% Glycerol
<b>Preservative</b>	0.01% Thimerosal
<b>Storage</b>	Store as concentrated solution. Centrifuge briefly prior to opening vial. For short-term storage (1-2 weeks), store at 4°C. For long-term storage, aliquot and store at -20°C or below. Avoid multiple freeze-thaw cycles.
<b>Concentration</b>	0.43 mg/ml (Please refer to the vial label for the specific concentration.)
<b>Immunogen</b>	Recombinant protein encompassing a sequence within the center region of human RFC2. The exact sequence is proprietary.
<b>Purification</b>	Purified by antigen-affinity chromatography.
<b>Conjugation</b>	Unconjugated

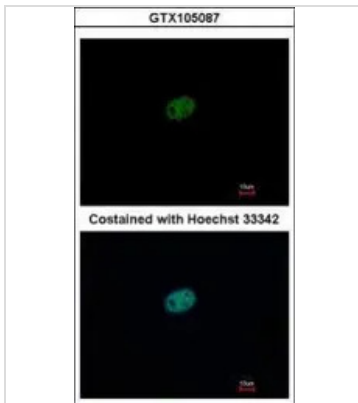
## Note

For laboratory research use only. Not for any clinical, therapeutic, or diagnostic use in humans or animals. Not for animal or human consumption.

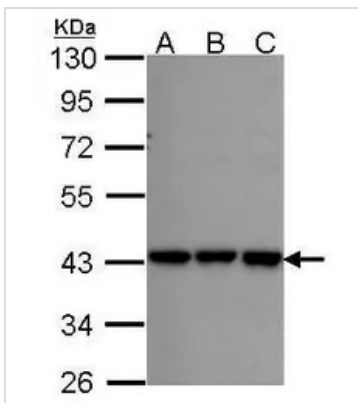
Purchasers shall not, and agree not to enable third parties to, analyze, copy, reverse engineer or otherwise attempt to determine the structure or sequence of the product.



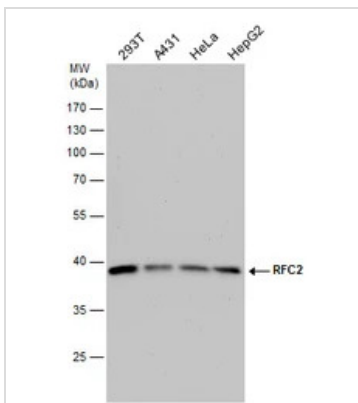
For full product information, images and publications, please visit our [website](#).

**DATA IMAGES**

**GTX105087 ICC/IF Image**

Immunofluorescence analysis of paraformaldehyde-fixed HeLa, using RFC2(GTX105087) antibody at 1:500 dilution.


**GTX105087 WB Image**

Sample (30 ug of whole cell lysate)  
 A: A431 (GTX27909)  
 B: H1299  
 C: HeLa  
 10% SDS PAGE  
 RFC2 antibody  
 GTX105087 diluted at 1:1000


**GTX105087 WB Image**

RFC2 antibody detects RFC2 protein by western blot analysis. Various whole cell extracts (30 µg) were separated by 10% SDS-PAGE, and the membrane was blotted with RFC2 antibody (GTX105087) diluted by 1:1000.



For full product information, images and publications, please visit our [website](https://www.genetex.com).



## PMS2 antibody [N1N3]

**Cat. No. GTX113804**

<b>Host</b>	Rabbit
<b>Clonality</b>	Polyclonal
<b>Isotype</b>	IgG
<b>Applications</b>	WB, IP
<b>Reactivity</b>	Human

**Package**  
100 µl, 25 µl

## Applications

**Application Note**

\*Optimal dilutions/concentrations should be determined by the researcher.

Suggested dilution	Recommended dilution
WB	1:500-1:10000
IP	1:100-1:500

Not tested in other applications.

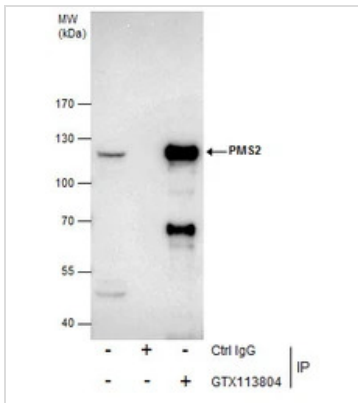
**Calculated MW** 96 kDa. ( [Note](#) )

## Properties

<b>Form</b>	Liquid
<b>Buffer</b>	PBS, 20% Glycerol
<b>Preservative</b>	0.025% ProClin 300
<b>Storage</b>	Store as concentrated solution. Centrifuge briefly prior to opening vial. For short-term storage (1-2 weeks), store at 4°C. For long-term storage, aliquot and store at -20°C or below. Avoid multiple freeze-thaw cycles.
<b>Concentration</b>	1 mg/ml (Please refer to the vial label for the specific concentration.)
<b>Immunogen</b>	Recombinant protein encompassing a sequence within the N-terminus region of human PMS2. The exact sequence is proprietary.
<b>Purification</b>	Purified by antigen-affinity chromatography.
<b>Conjugation</b>	Unconjugated
<b>Note</b>	For laboratory research use only. Not for any clinical, therapeutic, or diagnostic use in humans or animals. Not for animal or human consumption.  Purchasers shall not, and agree not to enable third parties to, analyze, copy, reverse engineer or otherwise attempt to determine the structure or sequence of the product.

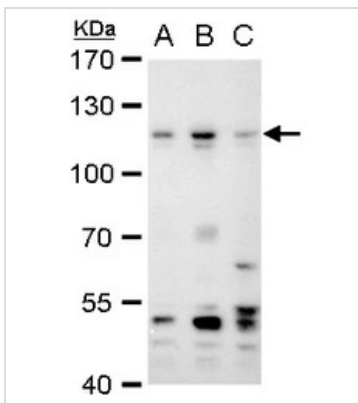


For full product information, images and publications, please visit our [website](#).

**DATA IMAGES**

**GTX113804 IP Image**

Immunoprecipitation of PMS2 protein from HeLa whole cell extracts using 5 µg of PMS2 antibody [N1N3] (GTX113804).

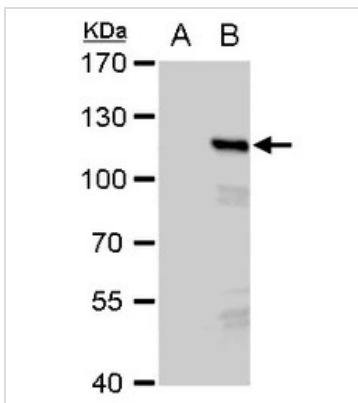
Western blot analysis was performed using PMS2 antibody [N1N3] (GTX113804) diluted at 1:500. EasyBlot anti-Rabbit IgG (GTX221666-01) was used as a secondary reagent.


**GTX113804 WB Image**

PMS2 antibody [N1N3] detects PMS2 protein by western blot analysis.

- A. 30 µg A431 whole cell extract
  - B. 30 µg HeLa whole cell extract
  - C. 30 µg HepG2 whole cell extract
- 7.5 % SDS-PAGE

PMS2 antibody [N1N3] (GTX113804) dilution: 1:1000


**GTX113804 WB Image**

PMS2 antibody [N1N3] detects PMS2 protein by western blot analysis.

- A. 30 µg 293T whole cell extract
  - B. 30 µg whole cell extract of human PMS2-transfected 293T cells
- 7.5 % SDS-PAGE

PMS2 antibody [N1N3] (GTX113804) dilution: 1:5000



For full product information, images and publications, please visit our [website](https://www.genetex.com).

## Goat Anti-Rabbit IgG antibody (HRP)

Cat. No. GTX213110-01

Host	Goat
Clonality	Polyclonal
Isotype	IgG
Applications	WB, IHC-P, ELISA
Reactivity	Rabbit

References ( 562 )

Package

1 ml

## Applications

## Application Note

\*Optimal dilutions/concentrations should be determined by the researcher.

Suggested dilution	Recommended dilution
WB	Assay dependent
IHC-P	1:100-1:1000
ELISA	Assay dependent

Not tested in other applications.

## Properties

Form	Liquid
Buffer	0.05M Tris, 0.15M NaCl, 1%BSA
Preservative	0.025% ProClin 300
Storage	Store as concentrated solution. Centrifuge briefly prior to opening vial. For short-term storage (1-2 weeks), store at 4°C. For long-term storage, aliquot and store at -20°C or below. Avoid multiple freeze-thaw cycles.
Concentration	0.53 mg/ml (Please refer to the vial label for the specific concentration.)
Immunogen	Highly purified whole rabbit IgG
Purification	Purified by antigen-affinity chromatography.
Conjugation	Horseradish peroxidase(HRP)

## Note

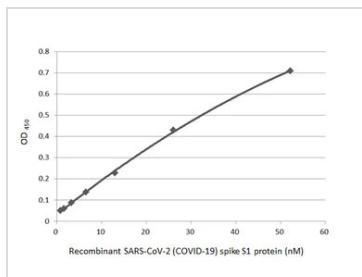
For laboratory research use only. Not for any clinical, therapeutic, or diagnostic use in humans or animals. Not for animal or human consumption.

Purchasers shall not, and agree not to enable third parties to, analyze, copy, reverse engineer or otherwise attempt to determine the structure or sequence of the product.



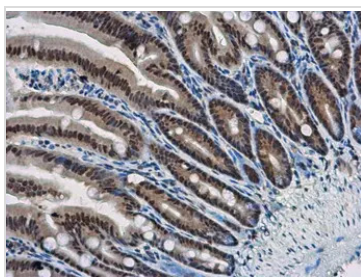
For full product information, images and publications, please visit our [website](#).

DATA IMAGES



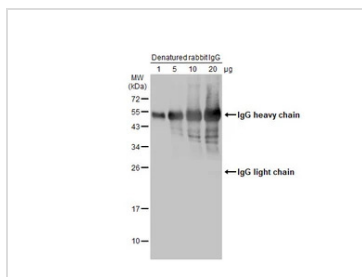
**GTx213110-01 ELISA Image**

Indirect ELISA analysis performed by coating plate with recombinant SARS-CoV-2 (COVID-19) Spike S1 protein, His tag (active) (GTx135817-pro) (52.15-0.81 nM). Coated protein was probed with SARS-CoV-2 (COVID-19) Spike S1 antibody [HL134] (GTx635671) (1 µg/mL). Goat anti-rabbit IgG antibody (HRP) (GTx213110-01) (1:10000) was used to detect bound primary antibody.



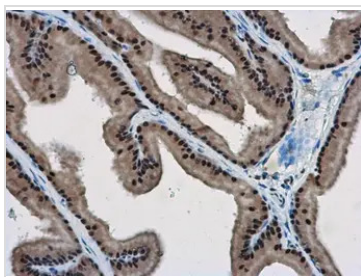
**GTx213110-01 IHC-P Image**

WBP11 antibody detects WBP11 protein at nucleus in mouse intestine by immunohistochemical analysis.  
Sample: Paraffin-embedded mouse intestine.  
WBP11 antibody (GTx118654) diluted at 1:500.  
The signal was developed by Rabbit IgG antibody (HRP) (GTx213110-01)  
Antigen Retrieval: Citrate buffer, pH 6.0, 15 min



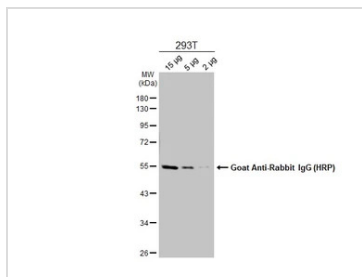
**GTx213110-01 WB Image**

Various amounts of denatured rabbit IgG protein were separated by 12% SDS-PAGE, and the membrane was blotted with HRP-conjugated anti-rabbit IgG antibody (GTx213110-01) diluted at 1:5000.



**GTx213110-01 IHC-P Image**

WBP11 antibody detects WBP11 protein at nucleus in rat prostate by immunohistochemical analysis.  
Sample: Paraffin-embedded rat prostate.  
WBP11 antibody (GTx118654) diluted at 1:500.  
The signal was developed by Rabbit IgG antibody (HRP) (GTx213110-01).  
Antigen Retrieval: Citrate buffer, pH 6.0, 15 min

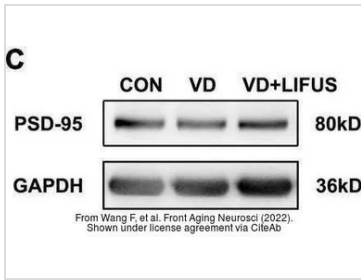


**GTx213110-01 WB Image**

Various whole cell extracts were separated by 10% SDS-PAGE, and the membrane was blotted with alpha Tubulin antibody (GTx112141) diluted at 1:10000. The HRP-conjugated anti-rabbit IgG antibody (GTx213110-01) was used to detect the primary antibody.

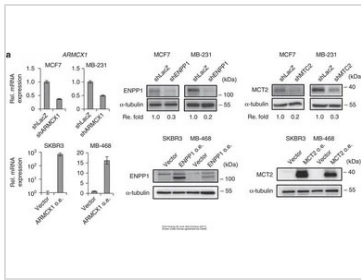


For full product information, images and publications, please visit our [website](https://www.genetex.com).



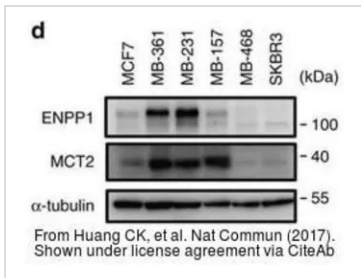
GTx213110-01 WB Image

The data was published in the 2022 in Front Aging Neurosci. [PMID: 35264943](#)



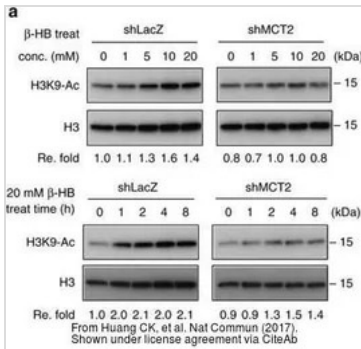
GTx213110-01 WB Image

The data was published in the 2017 in Nat Commun. [PMID: 28281525](#)



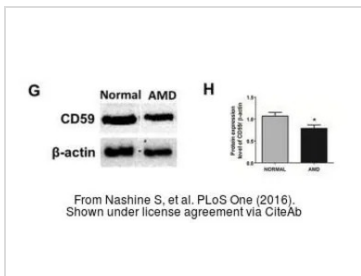
GTx213110-01 WB Image

The data was published in the 2017 in Nat Commun. [PMID: 28281525](#)



GTx213110-01 WB Image

The data was published in the 2017 in Nat Commun. [PMID: 28281525](#)

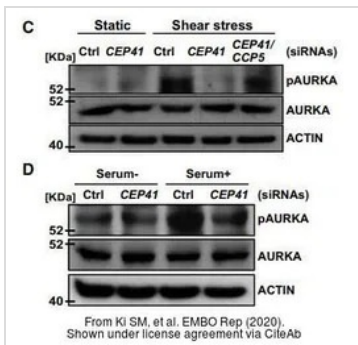


GTx213110-01 WB Image

The data was published in the 2016 in PLoS One. [PMID: 27486856](#)

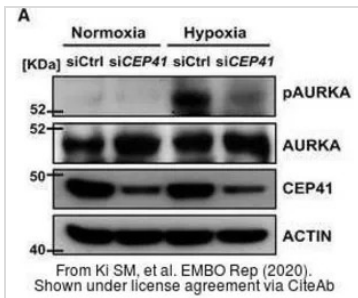


For full product information, images and publications, please visit our [website](#).



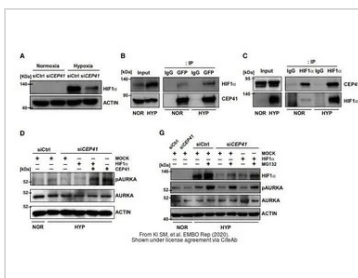
GTx213110-01 WB Image

The data was published in the journal EMBO Rep in 2020. [PMID: 31885126](#)



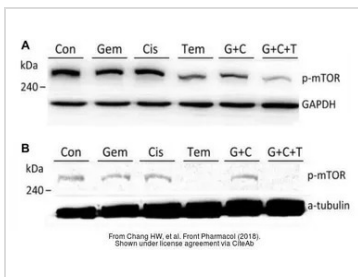
GTx213110-01 WB Image

The data was published in the journal EMBO Rep in 2020. [PMID: 31885126](#)



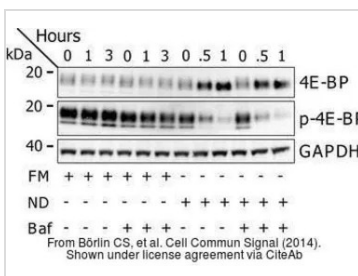
GTx213110-01 WB Image

The data was published in the journal EMBO Rep in 2020. [PMID: 31885126](#)



GTx213110-01 WB Image

The data was published in the journal Front Pharmacol in 2018. [PMID: 30087612](#)

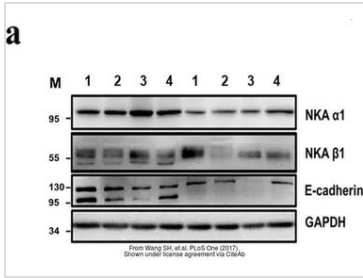


GTx213110-01 WB Image

The data was published in the journal Cell Commun Signal in 2014. [PMID: 25214434](#)

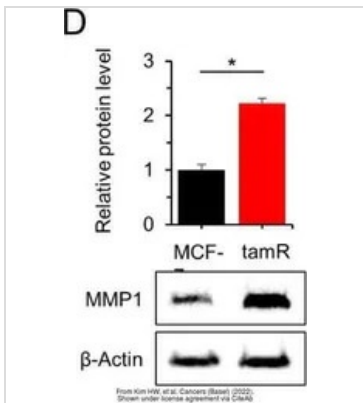


For full product information, images and publications, please visit our [website](#).



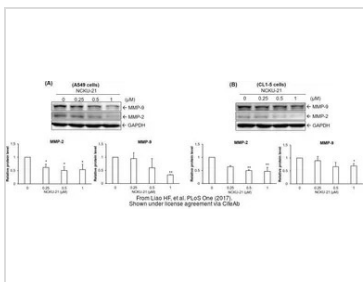
#### GTx213110-01 WB Image

The data was published in the journal PLoS One in 2017. [PMID: 28832634](https://pubmed.ncbi.nlm.nih.gov/28832634/)



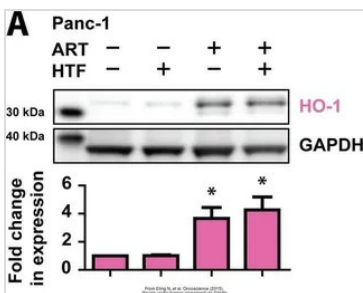
#### GTx213110-01 WB Image

The data was published in the journal Cancers (Basel) in 2022. [PMID: 35267540](https://pubmed.ncbi.nlm.nih.gov/35267540/)



#### GTx213110-01 WB Image

The data was published in the journal PLoS One in 2017. [PMID: 28945763](https://pubmed.ncbi.nlm.nih.gov/28945763/)



#### GTx213110-01 WB Image

The data was published in the journal Oncotarget in 2015. [PMID: 26097885](https://pubmed.ncbi.nlm.nih.gov/26097885/)



For full product information, images and publications, please visit our [website](https://www.genetex.com).

## PCNA antibody [HL1965]

Cat. No. GTX637858

Host	Rabbit
Clonality	Monoclonal
Isotype	IgG
Applications	WB, IHC-P
Reactivity	Human, Mouse, Rat, Zebrafish, Cat, Dog

Package  
100 µl, 25 µl

## Applications

## Application Note

\*Optimal dilutions/concentrations should be determined by the researcher.

Suggested dilution	Recommended dilution
WB	1:500-1:3000
IHC-P	Assay dependent

Not tested in other applications.

Observed MW (kDa) 36 kDa.

## Properties

Form	Liquid
Buffer	PBS
Preservative	No preservative
Storage	Store as concentrated solution. Centrifuge briefly prior to opening vial. For short-term storage (1-2 weeks), store at 4°C. For long-term storage, aliquot and store at -20°C or below. Avoid multiple freeze-thaw cycles.
Concentration	1 mg/ml (Please refer to the vial label for the specific concentration.)
Immunogen	Recombinant fragment of human PCNA
Purification	Affinity purified by Protein A.
Conjugation	Unconjugated

## Note

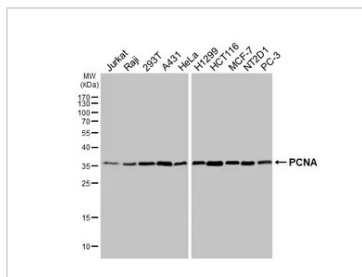
For laboratory research use only. Not for any clinical, therapeutic, or diagnostic use in humans or animals. Not for animal or human consumption.

Purchasers shall not, and agree not to enable third parties to, analyze, copy, reverse engineer or otherwise attempt to determine the structure or sequence of the product.

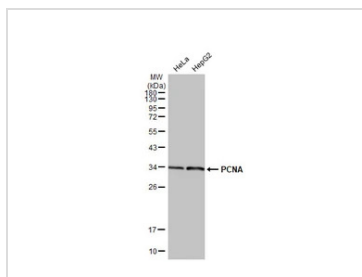


For full product information, images and publications, please visit our [website](#).

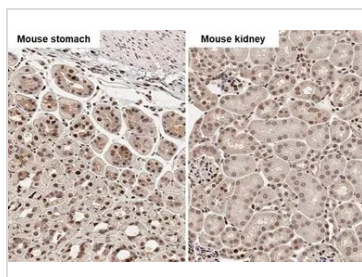


**DATA IMAGES**

**GTX637858 WB Image**

Various whole cell extracts (30 µg) were separated by 12% SDS-PAGE, and the membrane was blotted with PCNA antibody [HL1965] (GTX637858) diluted at 1:1000. The HRP-conjugated anti-rabbit IgG antibody (GTX213110-01) was used to detect the primary antibody.


**GTX637858 WB Image**

Various whole cell extracts (30 µg) were separated by 12% SDS-PAGE, and the membrane was blotted with PCNA antibody [HL1965] (GTX637858) diluted at 1:1000. The HRP-conjugated anti-rabbit IgG antibody (GTX213110-01) was used to detect the primary antibody. Corresponding RNA expression data for the same cell lines are based on Human Protein Atlas program.

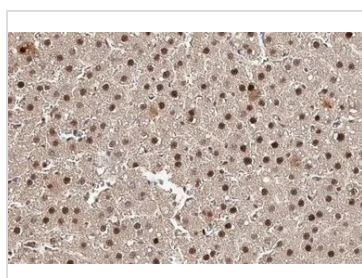

**GTX637858 IHC-P Image**

PCNA antibody [HL1965] detects PCNA protein by immunohistochemical analysis.

Sample: Paraffin-embedded mouse tissues.

PCNA stained by PCNA antibody [HL1965] (GTX637858) diluted at 1:200.

Antigen Retrieval: Citrate buffer, pH 6.0, 15 min

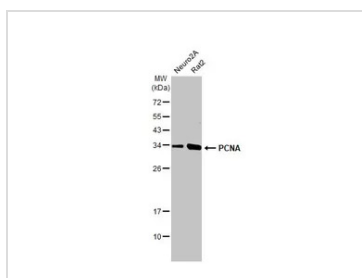

**GTX637858 IHC-P Image**

PCNA antibody [HL1965] detects PCNA protein at nucleus by immunohistochemical analysis.

Sample: Paraffin-embedded rat liver.

PCNA stained by PCNA antibody [HL1965] (GTX637858) diluted at 1:200.

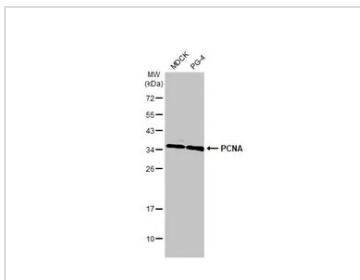
Antigen Retrieval: Citrate buffer, pH 6.0, 15 min


**GTX637858 WB Image**

Various whole cell extracts (30 µg) were separated by 12% SDS-PAGE, and the membrane was blotted with PCNA antibody [HL1965] (GTX637858) diluted at 1:1000. The HRP-conjugated anti-rabbit IgG antibody (GTX213110-01) was used to detect the primary antibody.

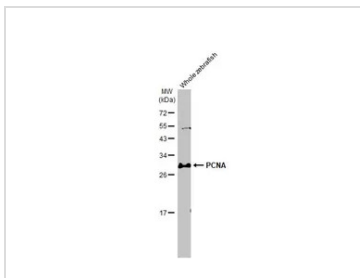


For full product information, images and publications, please visit our [website](https://www.genetex.com).



## GTX637858 WB Image

Various whole cell extracts (30 µg) were separated by 12% SDS-PAGE, and the membrane was blotted with PCNA antibody [HL1965] (GTX637858) diluted at 1:1000. The HRP-conjugated anti-rabbit IgG antibody (GTX213110-01) was used to detect the primary antibody.



## GTX637858 WB Image

Whole zebrafish extract (30 µg) was separated by 12% SDS-PAGE, and the membrane was blotted with PCNA antibody [HL1965] (GTX637858) diluted at 1:1000. The HRP-conjugated anti-rabbit IgG antibody (GTX213110-01) was used to detect the primary antibody.



For full product information, images and publications, please visit our [website](https://www.genetex.com).

## HMGB1 antibody [HL2059]

Cat. No. GTX637963

Host	Rabbit
Clonality	Monoclonal
Isotype	IgG
Applications	WB, ICC/IF, IHC-P, ELISA
Reactivity	Human, Mouse, Rat, Cat, Dog

## Package

100 µl, 25 µl

## Applications

## Application Note

\*Optimal dilutions/concentrations should be determined by the researcher.

Suggested dilution	Recommended dilution
WB	1:500-1:3000
ICC/IF	Assay dependent
IHC-P	Assay dependent
ELISA	Assay dependent

Not tested in other applications.

**Observed MW (kDa)** 29 kDa.

**Product Note** This antibody is specific for human HMGB1 protein, and it does not cross react with human HMGB2 protein.

## Properties

Form	Liquid
Buffer	PBS
Preservative	No preservative
Storage	Store as concentrated solution. Centrifuge briefly prior to opening vial. For short-term storage (1-2 weeks), store at 4°C. For long-term storage, aliquot and store at -20°C or below. Avoid multiple freeze-thaw cycles.
Concentration	1 mg/ml (Please refer to the vial label for the specific concentration.)
Immunogen	Carrier-protein conjugated synthetic peptide encompassing a sequence within the N-terminus region of human HMGB1. The exact sequence is proprietary.
Purification	Affinity purified by Protein A.
Conjugation	Unconjugated

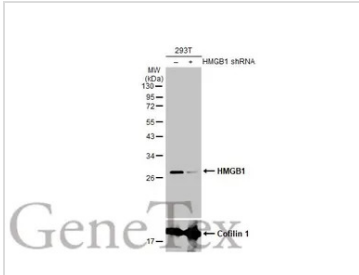


For full product information, images and publications, please visit our [website](#).

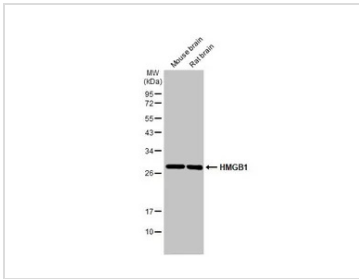
For laboratory research use only. Not for any clinical, therapeutic, or diagnostic use in humans or animals. Not for animal or human consumption.

**Note**

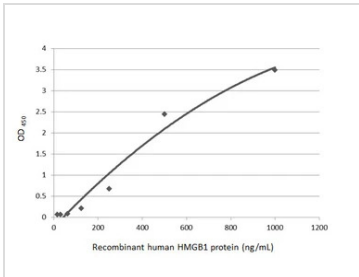
Purchasers shall not, and agree not to enable third parties to, analyze, copy, reverse engineer or otherwise attempt to determine the structure or sequence of the product.

**DATA IMAGES**

**GTX637963 WB Image**

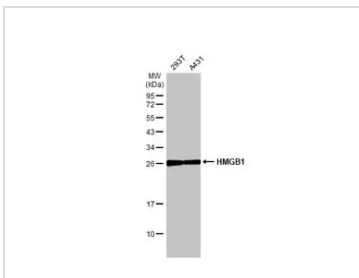
Non-transfected (–) and transfected (+) 293T whole cell extracts (30 µg) were separated by 12% SDS-PAGE, and the membrane was blotted with HMGB1 antibody [HL2059] (GTX637963) diluted at 1:1000. The HRP-conjugated anti-rabbit IgG antibody (GTX213110-01) was used to detect the primary antibody.


**GTX637963 WB Image**

Various tissue extracts (50 µg) were separated by 12% SDS-PAGE, and the membrane was blotted with HMGB1 antibody [HL2059] (GTX637963) diluted at 1:1000. The HRP-conjugated anti-rabbit IgG antibody (GTX213110-01) was used to detect the primary antibody.


**GTX637963 ELISA Image**

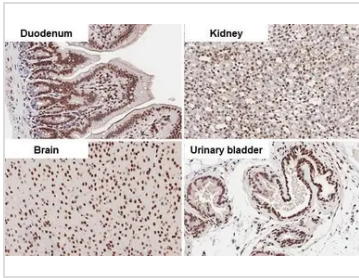
Indirect ELISA analysis was performed by coating the plate with recombinant HEK293 expressed, human HMGB1 protein (1000-15.63 ng/mL). Coated protein was probed with HMGB1 antibody [HL2059] (GTX637963) (1 µg/mL). Goat anti-rabbit IgG antibody (HRP) (GTX213110-01) (1:10000) was used to detect the bound primary antibody.


**GTX637963 WB Image**

Various whole cell extracts (30 µg) were separated by 12% SDS-PAGE, and the membrane was blotted with HMGB1 antibody [HL2059] (GTX637963) diluted at 1:1000. The HRP-conjugated anti-rabbit IgG antibody (GTX213110-01) was used to detect the primary antibody.



For full product information, images and publications, please visit our [website](http://www.genetex.com).



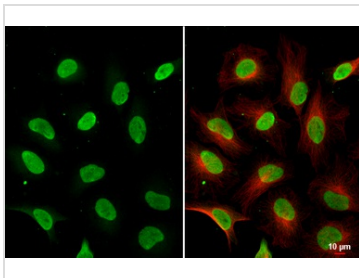
#### GTX637963 IHC-P Image

HMGB1 antibody [HL2059] detects HMGB1 protein at nucleus by immunohistochemical analysis.

Sample: Paraffin-embedded mouse tissues.

HMGB1 stained by HMGB1 antibody [HL2059] (GTX637963) diluted at 1:100.

Antigen Retrieval: Citrate buffer, pH 6.0, 15 min



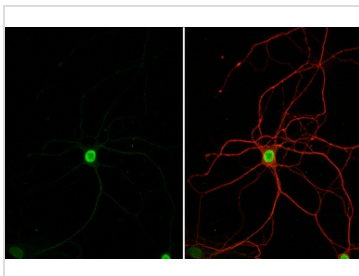
#### GTX637963 ICC/IF Image

HMGB1 antibody [HL2059] detects HMGB1 protein at nucleus by immunofluorescent analysis.

Sample: HeLa cells were fixed in 4% paraformaldehyde at RT for 15 min.

Green: HMGB1 stained by HMGB1 antibody [HL2059] (GTX637963) diluted at 1:500.

Red: alpha Tubulin, a cytoskeleton marker, stained by alpha Tubulin antibody [GT114] (GTX628802) diluted at 1:1000.



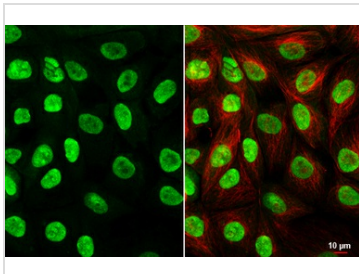
#### GTX637963 ICC/IF Image

HMGB1 antibody [HL2059] detects HMGB1 protein at nucleus by immunofluorescent analysis.

Sample: DIV9 rat E18 primary hippocampal neuron cells were fixed in 4% paraformaldehyde at RT for 15 min.

Green: HMGB1 stained by HMGB1 antibody [HL2059] (GTX637963) diluted at 1:250.

Red: Tau, an axon marker, stained by Tau antibody [GT287] (GTX634809) diluted at 1:500.



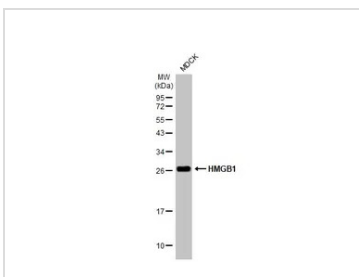
#### GTX637963 ICC/IF Image

HMGB1 antibody [HL2059] detects HMGB1 protein by immunofluorescent analysis.

Sample: MDCK cells were fixed in 4% paraformaldehyde at RT for 15 min.

Green: HMGB1 stained by HMGB1 antibody [HL2059] (GTX637963) diluted at 1:500.

Red: alpha Tubulin, a cytoskeleton marker, stained by alpha Tubulin antibody [GT114] (GTX628802) diluted at 1:1000.

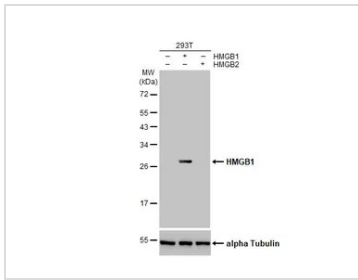


#### GTX637963 WB Image

Whole cell extract (30 µg) was separated by 12% SDS-PAGE, and the membrane was blotted with HMGB1 antibody [HL2059] (GTX637963) diluted at 1:1000. The HRP-conjugated anti-rabbit IgG antibody (GTX213110-01) was used to detect the primary antibody.

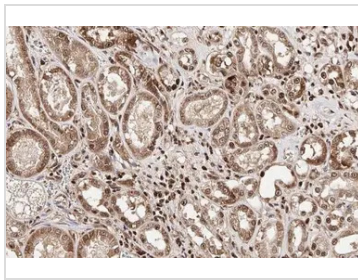


For full product information, images and publications, please visit our [website](https://www.genetex.com).



## GTX637963 WB Image

Non-transfected (–) and transfected (+) 293T whole cell extracts (5 µg) were separated by 12% SDS-PAGE, and the membrane was blotted with HMGB1 antibody [HL2059] (GTX637963) diluted at 1:300000. The HRP-conjugated anti-rabbit IgG antibody (GTX213110-01) was used to detect the primary antibody.



## GTX637963 IHC-P Image

HMGB1 antibody [HL2059] detects HMGB1 protein at cytoplasm and nucleus by immunohistochemical analysis.

Sample: Paraffin-embedded cat kidney.

HMGB1 stained by HMGB1 antibody [HL2059] (GTX637963) diluted at 1:100.

Antigen Retrieval: Citrate buffer, pH 6.0, 15 min



For full product information, images and publications, please visit our [website](https://www.genetex.com).