

GTX300020

Base Excision Repair Antibody Panel 1

Product Content

Cat No	Product Name	Reactivity	Applications	Package
GTX100050	APE1 antibody [N1], N-term	Human	WB, ICC/IF, IHC-P	25 µl
GTX101777	FEN1 antibody	Human, Mouse, Rat	WB, ICC/IF, IHC-P, IP, IHC, PLA	25 µl
GTX102888	DNA polymerase delta antibody	Human, Rat	WB, ICC/IF, IHC-P	25 µl
GTX102936	DNA ligase I antibody [C2C3], C-term	Human	WB	25 µl
GTX213110-01	Goat Anti-Rabbit IgG antibody (HRP)	Rabbit	WB, IHC-P, ELISA	25 µl
GTX636804	PARP antibody [HL1364]	Human, Mouse	WB, ICC/IF, IHC-P	25 µl
GTX637858	PCNA antibody [HL1965]	Human, Mouse, Rat, Zebrafish, Cat, Dog, Japanese Medaka	WB, IHC-P, IHC-Fr	25 µl
GTX637963	HMGB1 antibody [HL2059]	Human, Mouse, Rat, Cat, Dog	WB, ICC/IF, IHC-P, ELISA	25 µl

Note

For In vitro laboratory use only. Not for any clinical, therapeutic, or diagnostic use in humans or animals. Not for animal or human consumption.



For full product information, images and publications, please visit our [website](#).

APE1 antibody [N1], N-term

Cat. No. GTX100050

Host	Rabbit
Clonality	Polyclonal
Isotype	IgG
Applications	WB, ICC/IF, IHC-P
Reactivity	Human

Package
100 µl, 25 µl

Applications

Application Note

*Optimal dilutions/concentrations should be determined by the researcher.

Suggested dilution	Recommended dilution
WB	1:500-1:3000
ICC/IF	1:100-1:1000
IHC-P	1:100-1:1000

Not tested in other applications.

Calculated MW 36 kDa. ([Note](#))

Properties

Form	Liquid
Buffer	0.1M Tris, 0.1M Glycine, 10% Glycerol
Preservative	0.01% Thimerosal
Storage	Store as concentrated solution. Centrifuge briefly prior to opening vial. For short-term storage (1-2 weeks), store at 4°C. For long-term storage, aliquot and store at -20°C or below. Avoid multiple freeze-thaw cycles.
Concentration	5.04 mg/ml (Please refer to the vial label for the specific concentration.)
Immunogen	Carrier-protein conjugated synthetic peptide encompassing a sequence within the N-terminus region of human APE1. The exact sequence is proprietary.
Purification	Affinity purified by Protein A.
Conjugation	Unconjugated

Note

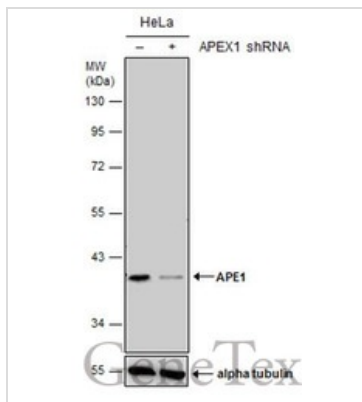
For laboratory research use only. Not for any clinical, therapeutic, or diagnostic use in humans or animals. Not for animal or human consumption.

Purchasers shall not, and agree not to enable third parties to, analyze, copy, reverse engineer or otherwise attempt to determine the structure or sequence of the product.



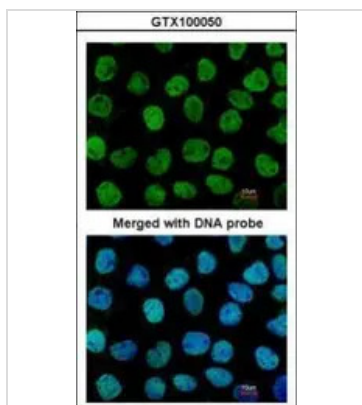
For full product information, images and publications, please visit our [website](#).

DATA IMAGES



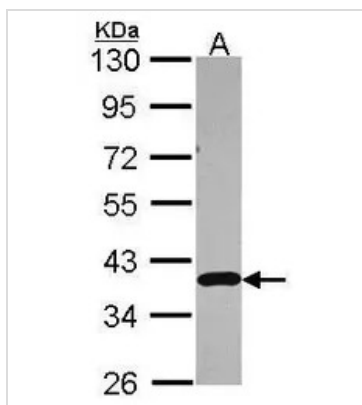
GTX100050 WB Image

Non-transfected (-) and transfected (+) HeLa whole cell extracts (30 µg) were separated by 10% SDS-PAGE, and the membrane was blotted with APE1 antibody [N1], N-term (GTX100050) diluted at 1:2000.



GTX100050 ICC/IF Image

Immunofluorescence analysis of paraformaldehyde-fixed A431, using APE1(GTX100050) antibody at 1:200 dilution.

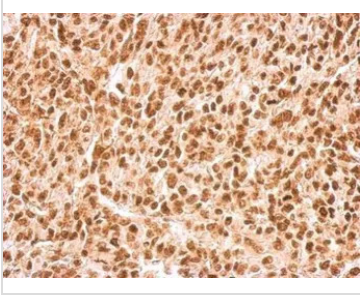


GTX100050 WB Image

Sample (30 ug of whole cell lysate)
 A: A549
 10% SDS PAGE
 GTX100050 diluted at 1:3000



For full product information, images and publications, please visit our [website](#).

**GTX100050 IHC-P Image**

APE1 antibody [N1], N-term detects APEX1 protein at nucleus on Saos2 xenograft by immunohistochemical analysis.

Sample: Paraffin-embedded Saos2 xenograft.

APE1 antibody [N1], N-term (GTX100050) dilution: 1:500.

Antigen Retrieval: Trilogy™ (EDTA based, pH 8.0) buffer, 15min



For full product information, images and publications, please visit our [website](#).

FEN1 antibody

Cat. No. GTX101777

Host	Rabbit
Clonality	Polyclonal
Isotype	IgG
Applications	WB, ICC/IF, IHC-P, IP, IHC, PLA
Reactivity	Human, Mouse, Rat

References (3)

Package

100 µl, 25 µl

Applications

Application Note

*Optimal dilutions/concentrations should be determined by the researcher.

Suggested dilution	Recommended dilution
WB	1:500-1:3000
ICC/IF	1:100-1:1000
IHC-P	1:100-1:1000
IP	1:100-1:500
IHC	Assay dependent
PLA	Assay dependent

Not tested in other applications.

Calculated MW 43 kDa. ([Note](#))

Properties

Form	Liquid
Buffer	PBS, 1% BSA, 20% Glycerol
Preservative	0.025% ProClin 300
Storage	Store as concentrated solution. Centrifuge briefly prior to opening vial. For short-term storage (1-2 weeks), store at 4°C. For long-term storage, aliquot and store at -20°C or below. Avoid multiple freeze-thaw cycles.
Concentration	0.2 mg/ml (Please refer to the vial label for the specific concentration.)
Immunogen	Recombinant protein encompassing a sequence within the center region of human FEN1. The exact sequence is proprietary.
Purification	Purified by antigen-affinity chromatography.
Conjugation	Unconjugated

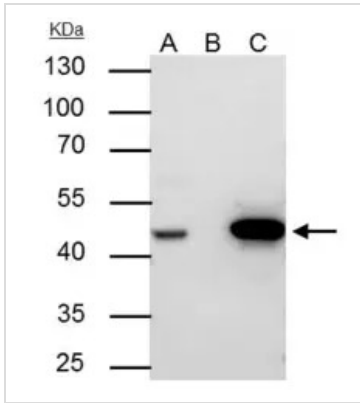


For full product information, images and publications, please visit our [website](#).

For laboratory research use only. Not for any clinical, therapeutic, or diagnostic use in humans or animals. Not for animal or human consumption.

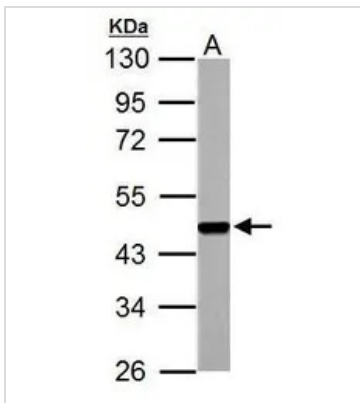
Note
 Purchasers shall not, and agree not to enable third parties to, analyze, copy, reverse engineer or otherwise attempt to determine the structure or sequence of the product.

DATA IMAGES



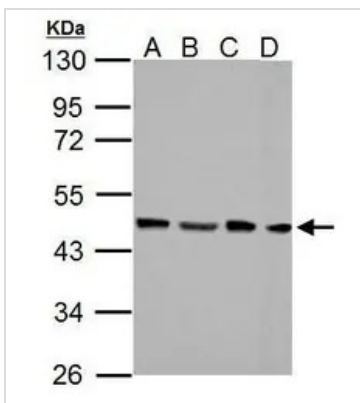
GTX101777 IP Image

FEN1 antibody immunoprecipitates FEN1 protein in IP experiments.
 IP samples: Jurkat whole cell extract
 A. 30 µg Jurkat whole cell extract
 B. Control with 4 µg of preimmune Rabbit IgG
 C. Immunoprecipitation of FEN1 protein by 4 µg FEN1 antibody (GTX101777)
 10 % SDS-PAGE
 The immunoprecipitated FEN1 protein was detected by FEN1 antibody (GTX101777) diluted at 1:500.
 [EasyBlot anti-rabbit IgG (GTX221666-01) was used as a secondary reagent]



GTX101777 WB Image

FEN1 antibody detects FEN1 protein by western blot analysis.
 A. 30 µg PC-12 whole cell lysate/extract
 10% SDS-PAGE
 FEN1 antibody (GTX101777) dilution: 1:1000
 The HRP-conjugated anti-rabbit IgG antibody (GTX213110-01) was used to detect the primary antibody.

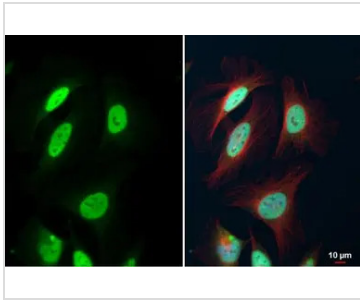


GTX101777 WB Image

FEN1 antibody detects FEN1 protein by western blot analysis.
 A. 30 µg NIH-3T3 whole cell lysate/extract
 B. 30 µg JC whole cell lysate/extract
 C. 30 µg BCL-1 whole cell lysate/extract
 D. 30 µg Raw264.7 whole cell lysate/extract
 10% SDS-PAGE
 FEN1 antibody (GTX101777) dilution: 1:1000
 The HRP-conjugated anti-rabbit IgG antibody (GTX213110-01) was used to detect the primary antibody.



For full product information, images and publications, please visit our [website](#).



GTX101777 ICC/IF Image

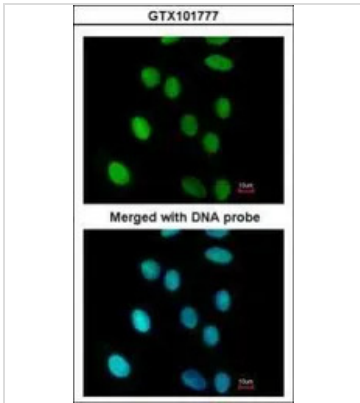
FEN1 antibody detects FEN1 protein at nucleus by immunofluorescent analysis.

Sample: HeLa cells were fixed in 4% paraformaldehyde at RT for 15 min.

Green: FEN1 stained by FEN1 antibody (GTX101777) diluted at 1:500.

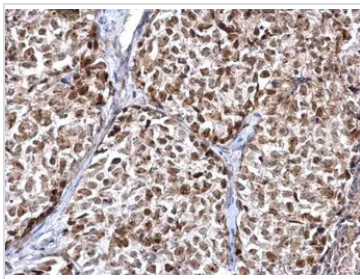
Red: alpha Tubulin, a cytoskeleton marker, stained by alpha Tubulin antibody [GT114] (GTX628802) diluted at 1:1000.

Blue: Fluoroshield with DAPI (GTX30920).



GTX101777 ICC/IF Image

Immunofluorescence analysis of paraformaldehyde-fixed A549, using FEN1(GTX101777) antibody at 1:200 dilution.



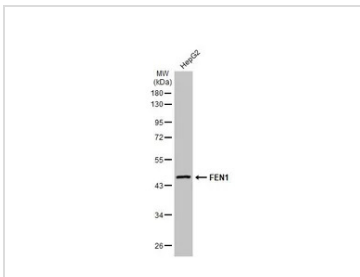
GTX101777 IHC-P Image

FEN1 antibody detects FEN1 protein at nucleus on human breast carcinoma by immunohistochemical analysis.

Sample: Paraffin-embedded human breast carcinoma.

FEN1 antibody (GTX101777) diluted at 1:500.

Antigen Retrieval: Trilogy™ (EDTA based, pH 8.0) buffer, 15min



GTX101777 WB Image

Whole cell extract (30 µg) was separated by 10% SDS-PAGE, and the membrane was blotted with FEN1 antibody (GTX101777) diluted at 1:1000. The HRP-conjugated anti-rabbit IgG antibody (GTX213110-01) was used to detect the primary antibody, and the signal was developed with Trident ECL plus-Enhanced.



For full product information, images and publications, please visit our [website](#).

DNA polymerase delta antibody

Cat. No. GTX102888

Host	Rabbit
Clonality	Polyclonal
Isotype	IgG
Applications	WB, ICC/IF, IHC-P
Reactivity	Human, Rat

References (1)

Package

100 µl, 25 µl

Applications

Application Note

*Optimal dilutions/concentrations should be determined by the researcher.

Suggested dilution	Recommended dilution
WB	1:500-1:3000
ICC/IF	1:100-1:1000
IHC-P	1:100-1:1000

Not tested in other applications.

Calculated MW 124 kDa. ([Note](#))

Properties

Form	Liquid
Buffer	0.1M Tris, 0.1M Glycine, 10% Glycerol
Preservative	0.01% Thimerosal
Storage	Store as concentrated solution. Centrifuge briefly prior to opening vial. For short-term storage (1-2 weeks), store at 4°C. For long-term storage, aliquot and store at -20°C or below. Avoid multiple freeze-thaw cycles.
Concentration	0.56 mg/ml (Please refer to the vial label for the specific concentration.)
Immunogen	Recombinant protein encompassing a sequence within the center region of human DNA polymerase delta. The exact sequence is proprietary.
Purification	Purified by antigen-affinity chromatography.
Conjugation	Unconjugated

Note

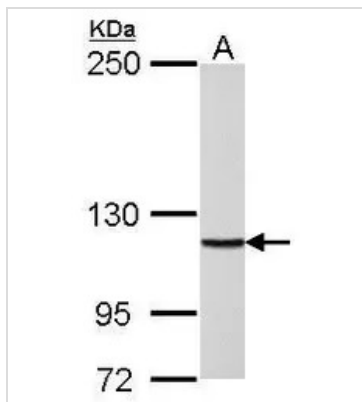
For laboratory research use only. Not for any clinical, therapeutic, or diagnostic use in humans or animals. Not for animal or human consumption.

Purchasers shall not, and agree not to enable third parties to, analyze, copy, reverse engineer or otherwise attempt to determine the structure or sequence of the product.



For full product information, images and publications, please visit our [website](#).

DATA IMAGES

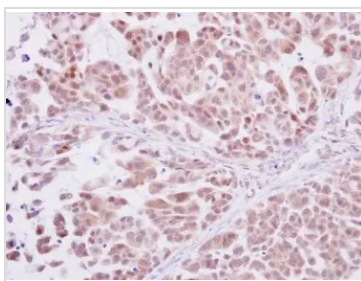
**GTX102888 WB Image**

DNA polymerase delta antibody detects POLD1 protein by Western blot analysis.

A. 30 μ g Rat2 whole cell lysate/extract

5 % SDS-PAGE

DNA polymerase delta antibody (GTX102888) dilution: 1:1000

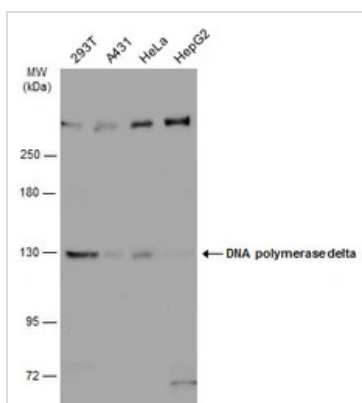
**GTX102888 IHC-P Image**

DNA polymerase delta antibody detects DNA polymerase delta protein at cytoplasm and nucleus on human lung adenocarcinoma by immunohistochemical analysis.

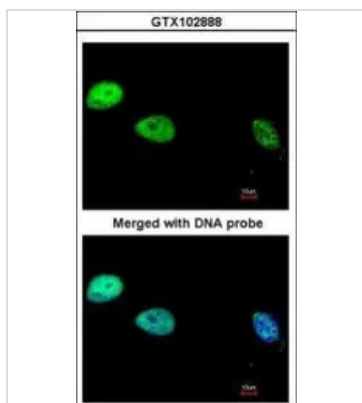
Sample: Paraffin-embedded human lung adenocarcinoma.

DNA polymerase delta antibody (GTX102888) diluted at 1:250.

Antigen Retrieval: Trilogy™ (EDTA based, pH 8.0) buffer, 15min

**GTX102888 WB Image**

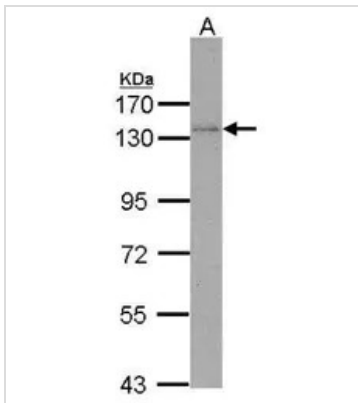
Various whole cell extracts (30 μ g) were separated by 5% SDS-PAGE, and the membrane was blotted with DNA polymerase delta antibody (GTX102888) diluted at 1:500. The HRP-conjugated anti-rabbit IgG antibody (GTX213110-01) was used to detect the primary antibody.

**GTX102888 ICC/IF Image**

Immunofluorescence analysis of paraformaldehyde-fixed HeLa, using DNA Polymerase delta, catalytic subunit(GTX102888) antibody at 1:200 dilution.



For full product information, images and publications, please visit our [website](#).

**GTX102888 WB Image**

Sample (30 ug of whole cell lysate)

A: Molt-4 (GTX27912)

7.5% SDS PAGE

GTX102888 diluted at 1:3000



For full product information, images and publications, please visit our [website](#).

DNA ligase I antibody [C2C3], C-term

Cat. No. GTX102936

Host	Rabbit
Clonality	Polyclonal
Isotype	IgG
Applications	WB
Reactivity	Human

References (2)

Package

100 µl, 25 µl

Applications

Application Note

*Optimal dilutions/concentrations should be determined by the researcher.

Suggested dilution	Recommended dilution
WB	1:500-1:3000

Not tested in other applications.

Calculated MW 102 kDa. ([Note](#))

Properties

Form	Liquid
Buffer	0.1M Tris, 0.1M Glycine, 10% Glycerol
Preservative	0.01% Thimerosal
Storage	Store as concentrated solution. Centrifuge briefly prior to opening vial. For short-term storage (1-2 weeks), store at 4°C. For long-term storage, aliquot and store at -20°C or below. Avoid multiple freeze-thaw cycles.
Concentration	1 mg/ml (Please refer to the vial label for the specific concentration.)
Immunogen	Recombinant protein encompassing a sequence within the C-terminus region of human DNA ligase I. The exact sequence is proprietary.
Purification	Purified by antigen-affinity chromatography.
Conjugation	Unconjugated

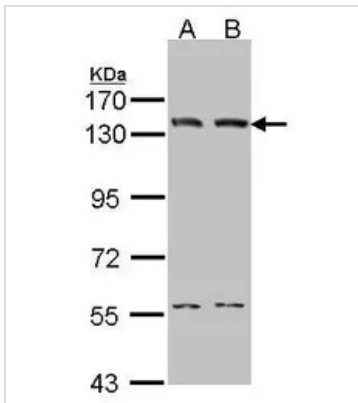
Note

For laboratory research use only. Not for any clinical, therapeutic, or diagnostic use in humans or animals. Not for animal or human consumption.

Purchasers shall not, and agree not to enable third parties to, analyze, copy, reverse engineer or otherwise attempt to determine the structure or sequence of the product.

For full product information, images and publications, please visit our [website](#).

DATA IMAGES

**GTX102936 WB Image**

Sample (30 ug of whole cell lysate)

A: A431 (GTX27909)

B: H1299

7.5% SDS PAGE

GTX102936 diluted at 1:1000



For full product information, images and publications, please visit our [website](#).

Goat Anti-Rabbit IgG antibody (HRP)

Cat. No. GTX213110-01

Host	Goat
Clonality	Polyclonal
Isotype	IgG
Applications	WB, IHC-P, ELISA
Reactivity	Rabbit

References (584)

Package

1 ml

Applications

Application Note

*Optimal dilutions/concentrations should be determined by the researcher.

Suggested dilution	Recommended dilution
WB	1:5000-1:20000
IHC-P	1:100-1:1000
ELISA	1:5000-1:20000

Not tested in other applications.

Properties

Form	Liquid
Buffer	0.05M Tris, 0.15M NaCl, 1%BSA
Preservative	0.025% ProClin 300
Storage	Store as concentrated solution. Centrifuge briefly prior to opening vial. For short-term storage (1-2 weeks), store at 4°C. For long-term storage, aliquot and store at -20°C or below. Avoid multiple freeze-thaw cycles.
Concentration	0.53 mg/ml (Please refer to the vial label for the specific concentration.)
Immunogen	Highly purified whole rabbit IgG
Purification	Purified by antigen-affinity chromatography.
Conjugation	Horseradish peroxidase(HRP)

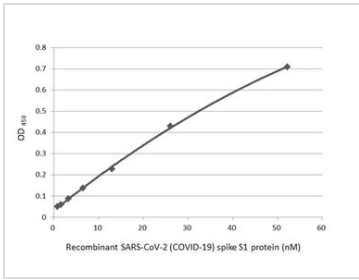
Note

For laboratory research use only. Not for any clinical, therapeutic, or diagnostic use in humans or animals. Not for animal or human consumption.

Purchasers shall not, and agree not to enable third parties to, analyze, copy, reverse engineer or otherwise attempt to determine the structure or sequence of the product.

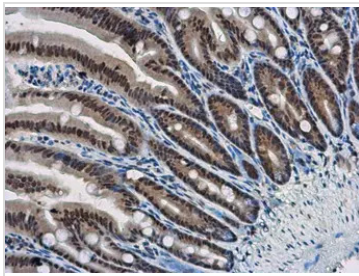
For full product information, images and publications, please visit our [website](#).

DATA IMAGES



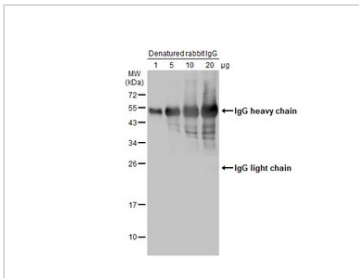
GTX213110-01 ELISA Image

Indirect ELISA analysis performed by coating plate with recombinant SARS-CoV-2 (COVID-19) Spike S1 protein, His tag (active) (GTX135817-pro) (52.15-0.81 nM). Coated protein was probed with SARS-CoV-2 (COVID-19) Spike S1 antibody [HL134] (GTX635671) (1 µg/mL). Goat anti-rabbit IgG antibody (HRP) (GTX213110-01) (1:10000) was used to detect bound primary antibody.



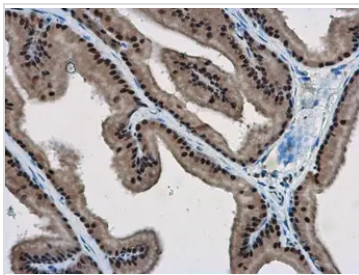
GTX213110-01 IHC-P Image

WBP11 antibody detects WBP11 protein at nucleus in mouse intestine by immunohistochemical analysis. Sample: Paraffin-embedded mouse intestine. WBP11 antibody (GTX118654) diluted at 1:500. The signal was developed by Rabbit IgG antibody (HRP) (GTX213110-01) Antigen Retrieval: Citrate buffer, pH 6.0, 15 min



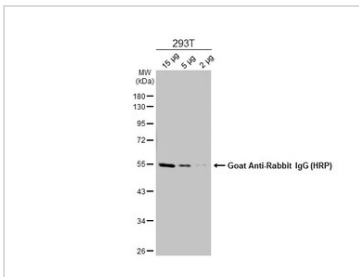
GTX213110-01 WB Image

Various amounts of denatured rabbit IgG protein were separated by 12% SDS-PAGE, and the membrane was blotted with HRP-conjugated anti-rabbit IgG antibody (GTX213110-01) diluted at 1:5000.



GTX213110-01 IHC-P Image

WBP11 antibody detects WBP11 protein at nucleus in rat prostate by immunohistochemical analysis. Sample: Paraffin-embedded rat prostate. WBP11 antibody (GTX118654) diluted at 1:500. The signal was developed by Rabbit IgG antibody (HRP) (GTX213110-01). Antigen Retrieval: Citrate buffer, pH 6.0, 15 min

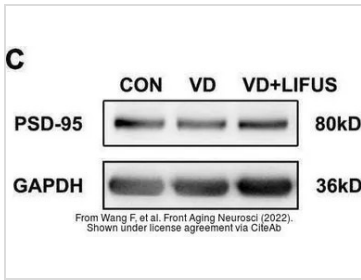


GTX213110-01 WB Image

Various whole cell extracts were separated by 10% SDS-PAGE, and the membrane was blotted with alpha Tubulin antibody (GTX112141) diluted at 1:10000. The HRP-conjugated anti-rabbit IgG antibody (GTX213110-01) was used to detect the primary antibody.

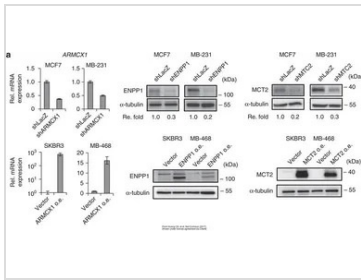


For full product information, images and publications, please visit our [website](#).



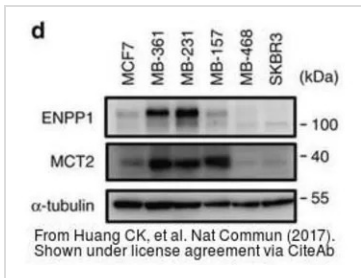
GTx213110-01 WB Image

The data was published in the 2022 in Front Aging Neurosci. [PMID: 35264943](#)



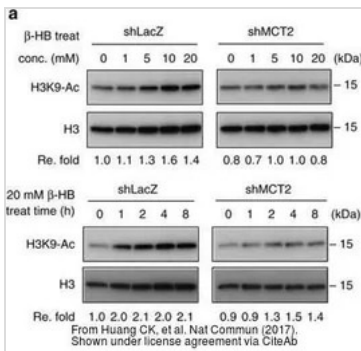
GTx213110-01 WB Image

The data was published in the 2017 in Nat Commun. [PMID: 28281525](#)



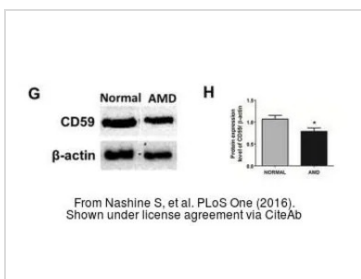
GTx213110-01 WB Image

The data was published in the 2017 in Nat Commun. [PMID: 28281525](#)



GTx213110-01 WB Image

The data was published in the 2017 in Nat Commun. [PMID: 28281525](#)

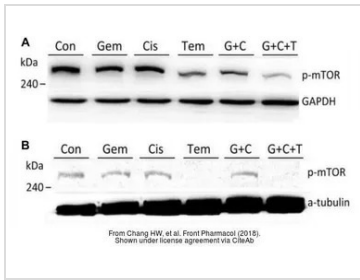


GTx213110-01 WB Image

The data was published in the 2016 in PLoS One. [PMID: 27486856](#)

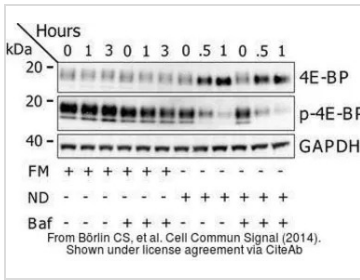


For full product information, images and publications, please visit our [website](#).



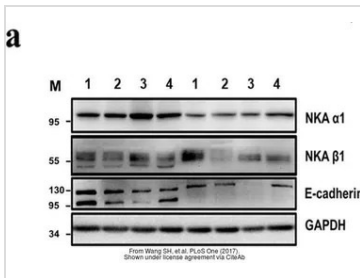
GTx213110-01 WB Image

The data was published in the journal Front Pharmacol in 2018. [PMID: 30087612](https://pubmed.ncbi.nlm.nih.gov/30087612/)



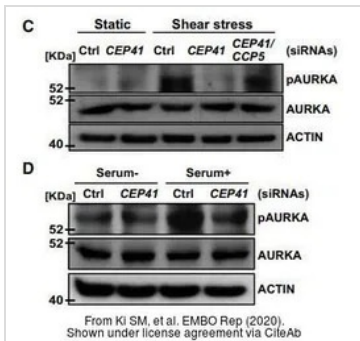
GTx213110-01 WB Image

The data was published in the journal Cell Commun Signal in 2014. [PMID: 25214434](https://pubmed.ncbi.nlm.nih.gov/25214434/)



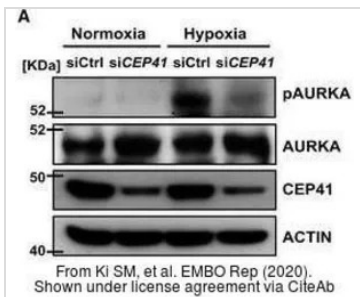
GTx213110-01 WB Image

The data was published in the journal PLoS One in 2017. [PMID: 28832634](https://pubmed.ncbi.nlm.nih.gov/28832634/)



GTx213110-01 WB Image

The data was published in the journal EMBO Rep in 2020. [PMID: 31885126](https://pubmed.ncbi.nlm.nih.gov/31885126/)

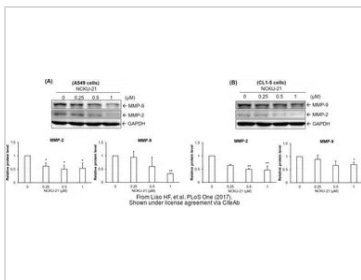


GTx213110-01 WB Image

The data was published in the journal EMBO Rep in 2020. [PMID: 31885126](https://pubmed.ncbi.nlm.nih.gov/31885126/)

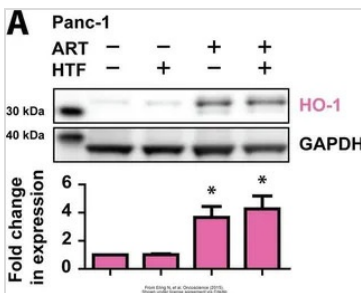


For full product information, images and publications, please visit our [website](https://www.genetex.com).



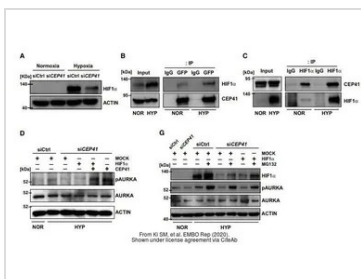
GTx213110-01 WB Image

The data was published in the journal PLoS One in 2017. [PMID: 28945763](https://pubmed.ncbi.nlm.nih.gov/28945763/)



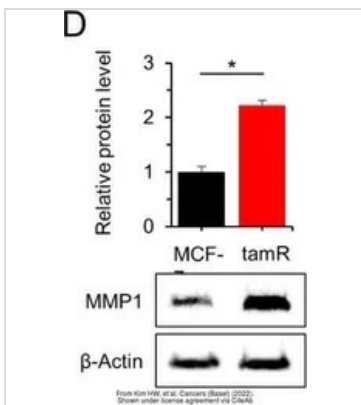
GTx213110-01 WB Image

The data was published in the journal Oncoscience in 2015. [PMID: 26097885](https://pubmed.ncbi.nlm.nih.gov/26097885/)



GTx213110-01 WB Image

The data was published in the journal EMBO Rep in 2020. [PMID: 31885126](https://pubmed.ncbi.nlm.nih.gov/31885126/)



GTx213110-01 WB Image

The data was published in the 2022 in Cancers (Basel). [PMID: 35267540](https://pubmed.ncbi.nlm.nih.gov/35267540/)



For full product information, images and publications, please visit our [website](https://www.genetex.com).

PARP antibody [HL1364]

Cat. No. GTX636804

Host	Rabbit
Clonality	Monoclonal
Isotype	IgG
Applications	WB, ICC/IF, IHC-P
Reactivity	Human, Mouse

Package
100 µl, 25 µl

Applications

Application Note

*Optimal dilutions/concentrations should be determined by the researcher.

Suggested dilution	Recommended dilution
WB	1:5000-1:20000
ICC/IF	Assay dependent
IHC-P	Assay dependent

Not tested in other applications.

Observed MW (kDa) 89 (cleaved form), 116 (Pro-form) kDa.

Product Note This antibody is specific for human PARP1 protein, and it does not cross react with human PARP2 and PARP3 protein.

Properties

Form	Liquid
Buffer	PBS
Preservative	No preservatives
Storage	Store as concentrated solution. Centrifuge briefly prior to opening vial. For short-term storage (1-2 weeks), store at 4°C. For long-term storage, aliquot and store at -20°C or below. Avoid multiple freeze-thaw cycles.
Concentration	1.5 mg/ml (Please refer to the vial label for the specific concentration.)
Immunogen	Recombinant protein encompassing a sequence within the center region of Human PARP. The exact sequence is proprietary.
Purification	Affinity purified by Protein A.
Conjugation	Unconjugated

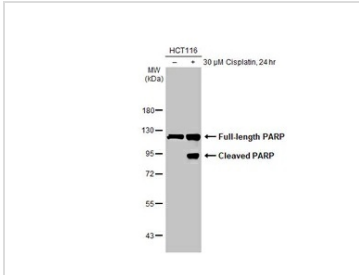


For full product information, images and publications, please visit our [website](#).

For laboratory research use only. Not for any clinical, therapeutic, or diagnostic use in humans or animals. Not for animal or human consumption.

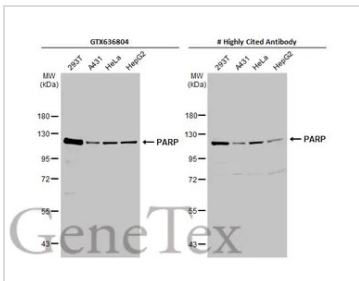
Note
Purchasers shall not, and agree not to enable third parties to, analyze, copy, reverse engineer or otherwise attempt to determine the structure or sequence of the product.

DATA IMAGES



GTX636804 WB Image

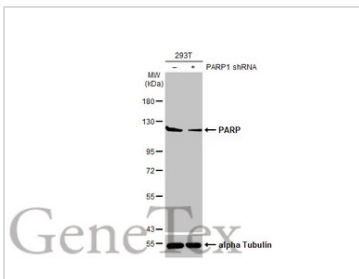
Untreated (-) and treated (+) HCT-116 whole cell extract (30 µg) were separated by 7.5% SDS-PAGE, and the membrane was blotted with PARP antibody [HL1364] (GTX636804) diluted at 1:10000. The HRP-conjugated anti-rabbit IgG antibody (GTX213110-01) was used to detect the primary antibody.



GTX636804 WB Image

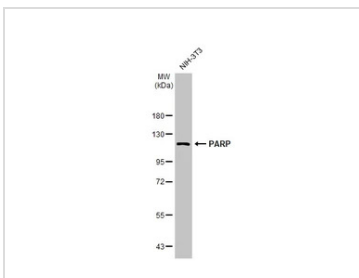
Various whole cell extracts (30 µg) were separated by 7.5% SDS-PAGE, and the membranes were blotted with PARP antibody [HL1364] (GTX636804) diluted at 1:10000 and competitor's antibody (# Highly Cited Antibody) diluted at 1:1000. The HRP-conjugated anti-rabbit IgG antibody (GTX213110-01) was used to detect the primary antibody.

*The competitor is not affiliated with GeneTex and does not endorse this product.



GTX636804 WB Image

Non-transfected (-) and transfected (+) 293T whole cell extracts (30 µg) were separated by 7.5% SDS-PAGE, and the membrane was blotted with PARP antibody [HL1364] (GTX636804) diluted at 1:10000. The HRP-conjugated anti-rabbit IgG antibody (GTX213110-01) was used to detect the primary antibody.

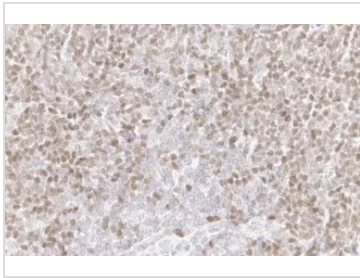


GTX636804 WB Image

Whole cell extract (30 µg) was separated by 7.5% SDS-PAGE, and the membrane was blotted with PARP antibody [HL1364] (GTX636804) diluted at 1:1000. The HRP-conjugated anti-rabbit IgG antibody (GTX213110-01) was used to detect the primary antibody, and the signal was developed with Trident ECL plus-Enhanced.



For full product information, images and publications, please visit our [website](#).

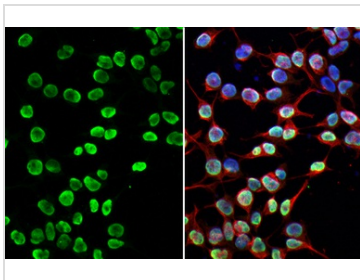

GTX636804 IHC-P Image

PARP antibody [HL1364] detects PARP protein by immunohistochemical analysis.

Sample: Paraffin-embedded mouse spleen.

PARP stained by PARP antibody [HL1364] (GTX636804) diluted at 1:100.

Antigen Retrieval: Citrate buffer, pH 6.0, 15 min


GTX636804 ICC/IF Image

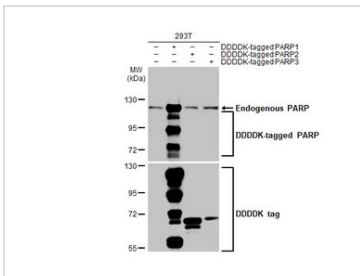
PARP antibody [HL1364] detects PARP protein by immunofluorescent analysis.

Sample: 293T cells were fixed in 4% paraformaldehyde at RT for 15 min.

Green: PARP stained by PARP antibody [HL1364] (GTX636804) diluted at 1:500.

Red: alpha Tubulin, a cytoskeleton marker, stained by alpha Tubulin antibody [GT114] (GTX628802) diluted at 1:1000.

Blue: Fluoroshield with DAPI (GTX30920).


GTX636804 WB Image

Non-transfected (-) and transfected (+) 293T whole cell extracts (30 µg) were separated by 7.5% SDS-PAGE, and the membrane was blotted with PARP antibody [HL1364] (GTX636804) diluted at 1:100000. The HRP-conjugated anti-rabbit IgG antibody (GTX213110-01) was used to detect the primary antibody.



For full product information, images and publications, please visit our [website](#).

PCNA antibody [HL1965]

Cat. No. GTX637858

Host	Rabbit
Clonality	Monoclonal
Isotype	IgG
Applications	WB, IHC-P, IHC-Fr
Reactivity	Human, Mouse, Rat, Zebrafish, Cat, Dog, Japanese Medaka

Package
100 µl, 25 µl

Applications

Application Note

*Optimal dilutions/concentrations should be determined by the researcher.

Suggested dilution	Recommended dilution
--------------------	----------------------

WB	1:500-1:3000
IHC-P	Assay dependent
IHC-Fr	Assay dependent

Not tested in other applications.

Observed MW (kDa) 36 kDa.

Properties

Form	Liquid
Buffer	PBS
Preservative	No preservatives
Storage	Store as concentrated solution. Centrifuge briefly prior to opening vial. For short-term storage (1-2 weeks), store at 4°C. For long-term storage, aliquot and store at -20°C or below. Avoid multiple freeze-thaw cycles.
Concentration	1 mg/ml (Please refer to the vial label for the specific concentration.)
Immunogen	Recombinant fragment of human PCNA
Purification	Affinity purified by Protein A.
Conjugation	Unconjugated

Note

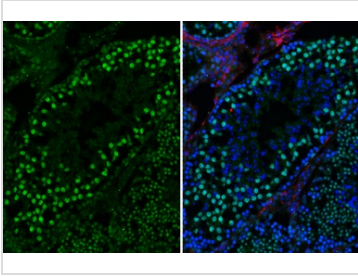
For laboratory research use only. Not for any clinical, therapeutic, or diagnostic use in humans or animals. Not for animal or human consumption.

Purchasers shall not, and agree not to enable third parties to, analyze, copy, reverse engineer or otherwise attempt to determine the structure or sequence of the product.



For full product information, images and publications, please visit our [website](#).

DATA IMAGES

**GTX637858 IHC-Fr Image**

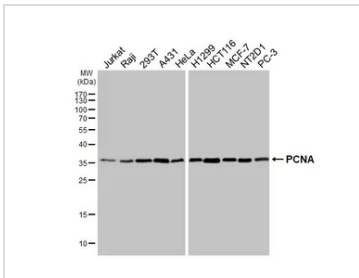
PCNA antibody [HL1965] detects PCNA protein by immunohistochemical analysis.

Sample: Frozen-sectioned mouse testis.

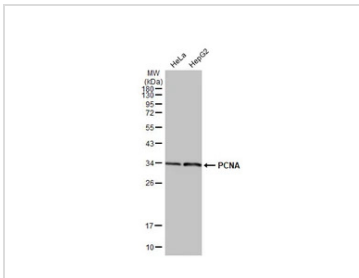
Green: PCNA stained by PCNA antibody [HL1965] (GTX637858) diluted at 1:200.

Red: Vimentin antibody [GT812] (GTX629744) diluted at 1:1000.

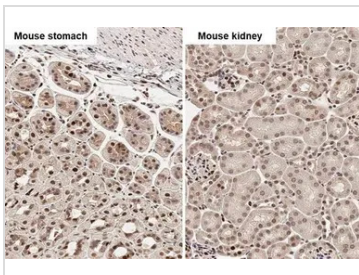
Blue: Hoechst 33342 staining.

**GTX637858 WB Image**

Various whole cell extracts (30 µg) were separated by 12% SDS-PAGE, and the membrane was blotted with PCNA antibody [HL1965] (GTX637858) diluted at 1:1000. The HRP-conjugated anti-rabbit IgG antibody (GTX213110-01) was used to detect the primary antibody.

**GTX637858 WB Image**

Various whole cell extracts (30 µg) were separated by 12% SDS-PAGE, and the membrane was blotted with PCNA antibody [HL1965] (GTX637858) diluted at 1:1000. The HRP-conjugated anti-rabbit IgG antibody (GTX213110-01) was used to detect the primary antibody. Corresponding RNA expression data for the same cell lines are based on Human Protein Atlas program.

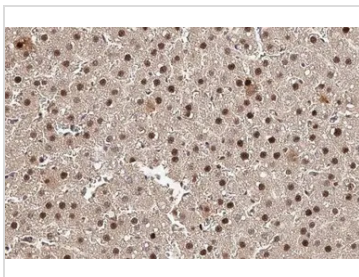
**GTX637858 IHC-P Image**

PCNA antibody [HL1965] detects PCNA protein by immunohistochemical analysis.

Sample: Paraffin-embedded mouse tissues.

PCNA stained by PCNA antibody [HL1965] (GTX637858) diluted at 1:200.

Antigen Retrieval: Citrate buffer, pH 6.0, 15 min

**GTX637858 IHC-P Image**

PCNA antibody [HL1965] detects PCNA protein at nucleus by immunohistochemical analysis.

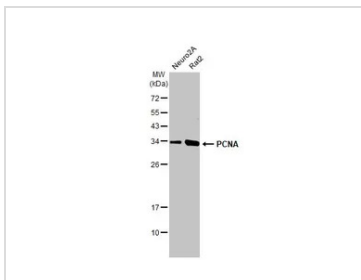
Sample: Paraffin-embedded rat liver.

PCNA stained by PCNA antibody [HL1965] (GTX637858) diluted at 1:200.

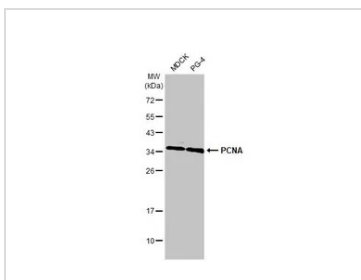
Antigen Retrieval: Citrate buffer, pH 6.0, 15 min



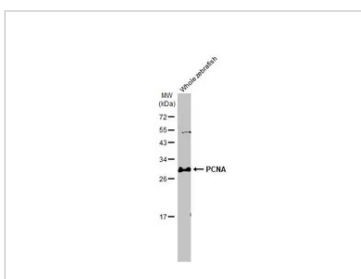
For full product information, images and publications, please visit our [website](#).


GTX637858 WB Image

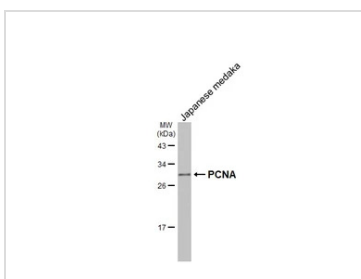
Various whole cell extracts (30 μ g) were separated by 12% SDS-PAGE, and the membrane was blotted with PCNA antibody [HL1965] (GTX637858) diluted at 1:1000. The HRP-conjugated anti-rabbit IgG antibody (GTX213110-01) was used to detect the primary antibody.


GTX637858 WB Image

Various whole cell extracts (30 μ g) were separated by 12% SDS-PAGE, and the membrane was blotted with PCNA antibody [HL1965] (GTX637858) diluted at 1:1000. The HRP-conjugated anti-rabbit IgG antibody (GTX213110-01) was used to detect the primary antibody.


GTX637858 WB Image

Whole zebrafish extract (30 μ g) was separated by 12% SDS-PAGE, and the membrane was blotted with PCNA antibody [HL1965] (GTX637858) diluted at 1:1000. The HRP-conjugated anti-rabbit IgG antibody (GTX213110-01) was used to detect the primary antibody.


GTX637858 WB Image

Whole Japanese medaka extract (30 μ g) was separated by 12% SDS-PAGE, and the membrane was blotted with PCNA antibody [HL1965] (GTX637858) diluted at 1:1000. The HRP-conjugated anti-rabbit IgG antibody (GTX213110-01) was used to detect the primary antibody.



For full product information, images and publications, please visit our [website](#).

HMGB1 antibody [HL2059]

Cat. No. GTX637963

Host	Rabbit
Clonality	Monoclonal
Isotype	IgG
Applications	WB, ICC/IF, IHC-P, ELISA
Reactivity	Human, Mouse, Rat, Cat, Dog

References (1)

Package

100 µl, 25 µl

Applications

Application Note

*Optimal dilutions/concentrations should be determined by the researcher.

Suggested dilution	Recommended dilution
WB	1:500-1:3000
ICC/IF	Assay dependent
IHC-P	Assay dependent
ELISA	Assay dependent

Not tested in other applications.

Observed MW (kDa) 29 kDa.**Product Note** This antibody is specific for human HMGB1 protein, and it does not cross react with human HMGB2 protein.

Properties

Form	Liquid
Buffer	PBS
Preservative	No preservatives
Storage	Store as concentrated solution. Centrifuge briefly prior to opening vial. For short-term storage (1-2 weeks), store at 4°C. For long-term storage, aliquot and store at -20°C or below. Avoid multiple freeze-thaw cycles.
Concentration	1 mg/ml (Please refer to the vial label for the specific concentration.)
Immunogen	Carrier-protein conjugated synthetic peptide encompassing a sequence within the N-terminus region of human HMGB1. The exact sequence is proprietary.
Purification	Affinity purified by Protein A.
Conjugation	Unconjugated

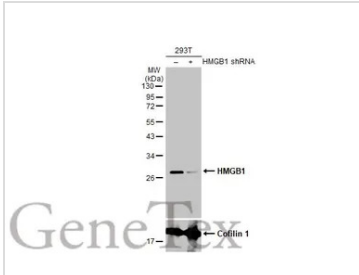


For full product information, images and publications, please visit our [website](#).

For laboratory research use only. Not for any clinical, therapeutic, or diagnostic use in humans or animals. Not for animal or human consumption.

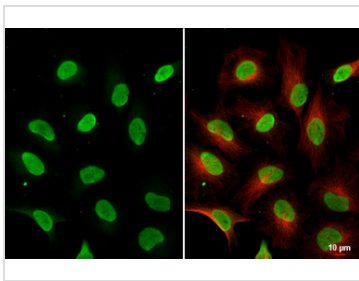
Note
Purchasers shall not, and agree not to enable third parties to, analyze, copy, reverse engineer or otherwise attempt to determine the structure or sequence of the product.

DATA IMAGES



GTX637963 WB Image

Non-transfected (-) and transfected (+) 293T whole cell extracts (30 µg) were separated by 12% SDS-PAGE, and the membrane was blotted with HMGB1 antibody [HL2059] (GTX637963) diluted at 1:1000. The HRP-conjugated anti-rabbit IgG antibody (GTX213110-01) was used to detect the primary antibody.



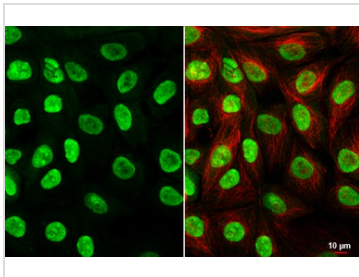
GTX637963 ICC/IF Image

HMGB1 antibody [HL2059] detects HMGB1 protein by immunofluorescent analysis.

Sample: HeLa cells were fixed in 4% paraformaldehyde at RT for 15 min.

Green: HMGB1 stained by HMGB1 antibody [HL2059] (GTX637963) diluted at 1:500.

Red: alpha Tubulin, a cytoskeleton marker, stained by alpha Tubulin antibody [GT114] (GTX628802) diluted at 1:1000.



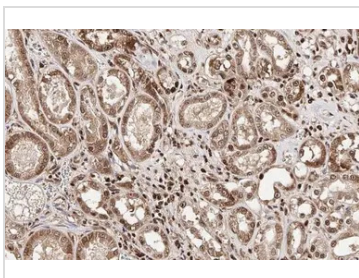
GTX637963 ICC/IF Image

HMGB1 antibody [HL2059] detects HMGB1 protein by immunofluorescent analysis.

Sample: MDCK cells were fixed in 4% paraformaldehyde at RT for 15 min.

Green: HMGB1 stained by HMGB1 antibody [HL2059] (GTX637963) diluted at 1:500.

Red: alpha Tubulin, a cytoskeleton marker, stained by alpha Tubulin antibody [GT114] (GTX628802) diluted at 1:1000.



GTX637963 IHC-P Image

HMGB1 antibody [HL2059] detects HMGB1 protein at cytoplasm and nucleus by immunohistochemical analysis.

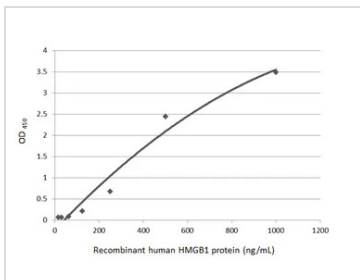
Sample: Paraffin-embedded cat kidney.

HMGB1 stained by HMGB1 antibody [HL2059] (GTX637963) diluted at 1:100.

Antigen Retrieval: Citrate buffer, pH 6.0, 15 min

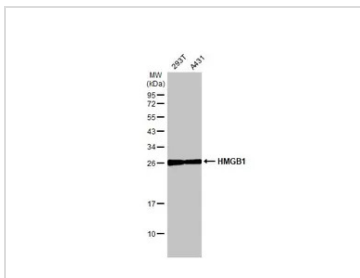


For full product information, images and publications, please visit our [website](http://www.genetex.com).



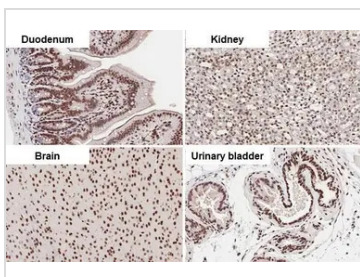
GTX637963 ELISA Image

Indirect ELISA analysis was performed by coating the plate with recombinant HEK293 expressed, human HMGB1 protein (1000-15.63 ng/mL). Coated protein was probed with HMGB1 antibody [HL2059] (GTX637963) (1 µg/mL). Goat anti-rabbit IgG antibody (HRP) (GTX213110-01) (1:10000) was used to detect the bound primary antibody.



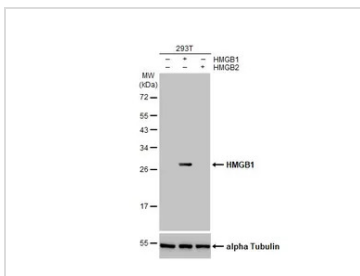
GTX637963 WB Image

Various whole cell extracts (30 µg) were separated by 12% SDS-PAGE, and the membrane was blotted with HMGB1 antibody [HL2059] (GTX637963) diluted at 1:1000. The HRP-conjugated anti-rabbit IgG antibody (GTX213110-01) was used to detect the primary antibody.



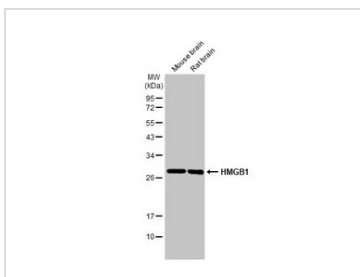
GTX637963 IHC-P Image

HMGB1 antibody [HL2059] detects HMGB1 protein at nucleus by immunohistochemical analysis. Sample: Paraffin-embedded mouse tissues. HMGB1 stained by HMGB1 antibody [HL2059] (GTX637963) diluted at 1:100. Antigen Retrieval: Citrate buffer, pH 6.0, 15 min



GTX637963 WB Image

Non-transfected (-) and transfected (+) 293T whole cell extracts (5 µg) were separated by 12% SDS-PAGE, and the membrane was blotted with HMGB1 antibody [HL2059] (GTX637963) diluted at 1:300000. The HRP-conjugated anti-rabbit IgG antibody (GTX213110-01) was used to detect the primary antibody.

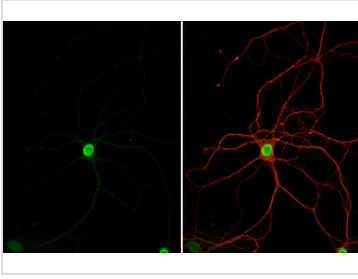


GTX637963 WB Image

Various tissue extracts (50 µg) were separated by 12% SDS-PAGE, and the membrane was blotted with HMGB1 antibody [HL2059] (GTX637963) diluted at 1:1000. The HRP-conjugated anti-rabbit IgG antibody (GTX213110-01) was used to detect the primary antibody.



For full product information, images and publications, please visit our [website](#).

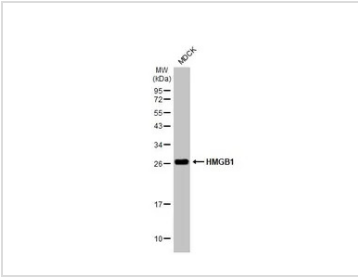

GTX637963 ICC/IF Image

HMGB1 antibody [HL2059] detects HMGB1 protein at nucleus by immunofluorescent analysis.

Sample: DIV9 rat E18 primary hippocampal neuron cells were fixed in 4% paraformaldehyde at RT for 15 min.

Green: HMGB1 stained by HMGB1 antibody [HL2059] (GTX637963) diluted at 1:250.

Red: Tau, an axon marker, stained by Tau antibody [GT287] (GTX634809) diluted at 1:500.


GTX637963 WB Image

Whole cell extract (30 µg) was separated by 12% SDS-PAGE, and the membrane was blotted with HMGB1 antibody [HL2059] (GTX637963) diluted at 1:1000. The HRP-conjugated anti-rabbit IgG antibody (GTX213110-01) was used to detect the primary antibody.



For full product information, images and publications, please visit our [website](#).