

GTX300024

Bcl-2 Family Antibody Panel— anti-apoptosis

Product Content

Cat No	Product Name	Reactivity	Applications	Package
GTX100064	Bcl-2 antibody [N1N2], N-term	Human, Mouse, Rat, Cat, Dog	WB, ICC/IF, IHC-P	25 µl
GTX105661	Bcl-X antibody	Human, Mouse, Rat, Dog	WB, ICC/IF, IHC-P, IP	25 µl
GTX111872	BCL2L10 antibody [N2C2], Internal	Human	WB, ICC/IF, IHC-P	25 µl
GTX213110-01	Goat Anti-Rabbit IgG antibody (HRP)	Rabbit	WB, IHC-P, ELISA	25 µl
GTX637019	MCL1 antibody [HL1544]	Human, Mouse, Rat, Cat, Dog	WB, IHC-P	25 µl

Note

For In vitro laboratory use only. Not for any clinical, therapeutic, or diagnostic use in humans or animals. Not for animal or human consumption.



For full product information, images and publications, please visit our [website](#).

Bcl-2 antibody [N1N2], N-term

Cat. No. GTX100064

Host	Rabbit
Clonality	Polyclonal
Isotype	IgG
Applications	WB, ICC/IF, IHC-P
Reactivity	Human, Mouse, Rat, Cat, Dog

References (150)

★★★★★ Review (5)

Package

100 µl, 25 µl

PRODUCT

Summary

BCL-2 antibody recognizes BCL-2 protein. BCL-2 (26 kDa) regulates mitochondrial dynamics, is involved in the regulation of mitochondrial fusion and fission, and is associated with apoptosis. Abnormal expression of BCL-2 protein is linked to various cancers, autoimmunity, and psychiatric disorders. This BCL-2 antibody is a widely published rabbit polyclonal validated for multiple applications.

Applications

Application Note

*Optimal dilutions/concentrations should be determined by the researcher.

Suggested dilution	Recommended dilution
WB	1:500-1:3000
ICC/IF	1:100-1:1000
IHC-P	1:100-1:1000

Not tested in other applications.

Calculated MW 26 kDa. ([Note](#))

Product Note We do not recommend use of this product for Zebrafish samples.

Properties

Form	Liquid
Buffer	PBS, 1% BSA, 20% Glycerol
Preservative	0.025% ProClin 300
Storage	Store as concentrated solution. Centrifuge briefly prior to opening vial. For short-term storage (1-2 weeks), store at 4°C. For long-term storage, aliquot and store at -20°C or below. Avoid multiple freeze-thaw cycles.
Concentration	0.2 mg/ml (Please refer to the vial label for the specific concentration.)
Immunogen	Carrier-protein conjugated synthetic peptide encompassing a sequence within the N-terminus region of human Bcl-2. The exact sequence is proprietary.
Purification	Purified by antigen-affinity chromatography.



For full product information, images and publications, please visit our [website](#).

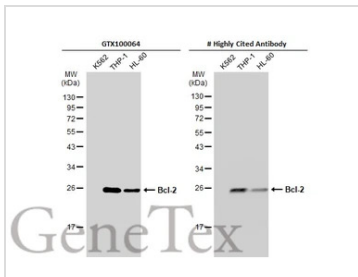
Conjugation

Unconjugated

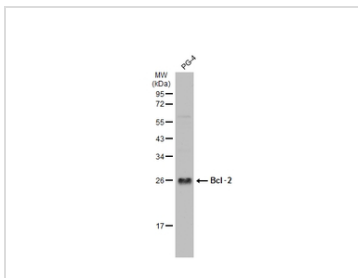
Note

For laboratory research use only. Not for any clinical, therapeutic, or diagnostic use in humans or animals. Not for animal or human consumption.

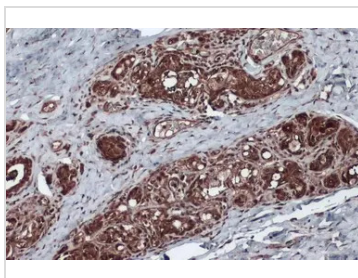
Purchasers shall not, and agree not to enable third parties to, analyze, copy, reverse engineer or otherwise attempt to determine the structure or sequence of the product.

DATA IMAGES

GTX100064 WB Image

Various whole cell extracts (30 µg) were separated by 12% SDS-PAGE, and the membrane was blotted with Bcl-2 antibody [N1N2], N-term (GTX100064) diluted at 1:500. The HRP-conjugated anti-rabbit IgG antibody (GTX213110-01) was used to detect the primary antibody.


GTX100064 WB Image

PG-4 whole cell extract (30 µg) was separated by 12% SDS-PAGE, and the membrane was blotted with Bcl-2 antibody (GTX100064) diluted at 1:1000. The HRP-conjugated anti-rabbit IgG antibody (GTX213110-01) was used to detect the primary antibody, and the signal was developed with Trident ECL plus-Enhanced.

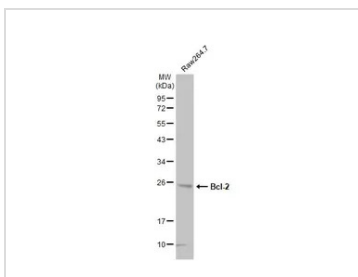

GTX100064 IHC-P Image

Bcl-2 antibody detects Bcl-2 protein at cytoplasm and nucleus by immunohistochemical analysis.

Sample: Paraffin-embedded dog mammary gland.

Bcl-2 stained by Bcl-2 antibody (GTX100064) diluted at 1:500.

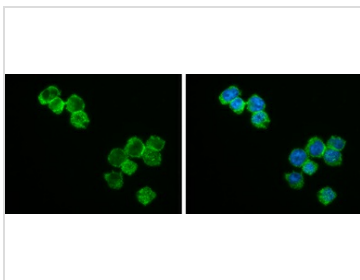
Antigen Retrieval: Citrate buffer, pH 6.0, 15 min


GTX100064 WB Image

Whole cell extract (30 µg) was separated by 12% SDS-PAGE, and the membrane was blotted with Bcl-2 antibody [N1N2], N-term (GTX100064) diluted at 1:1000. The HRP-conjugated anti-rabbit IgG antibody (GTX213110-01) was used to detect the primary antibody.



For full product information, images and publications, please visit our [website](https://www.genetex.com).



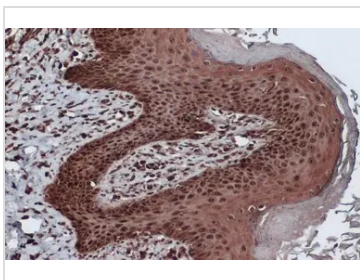
GTX100064 ICC/IF Image

Bcl-2 antibody [N1N2], N-term detects Bcl-2 protein at cytoplasm and nucleus by immunofluorescent analysis.

Sample: THP-1 cells were fixed in 4% paraformaldehyde at RT for 15 min.

Green: Bcl-2 stained by Bcl-2 antibody [N1N2], N-term (GTX100064) diluted at 1:500.

Blue: Fluoroshield with DAPI (GTX30920).



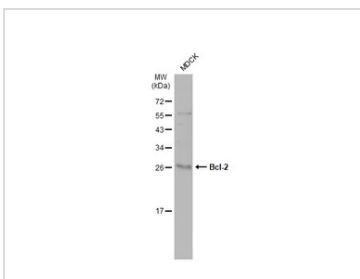
GTX100064 IHC-P Image

Bcl-2 antibody detects Bcl-2 protein at cytoplasm and nucleus by immunohistochemical analysis.

Sample: Paraffin-embedded dog skin.

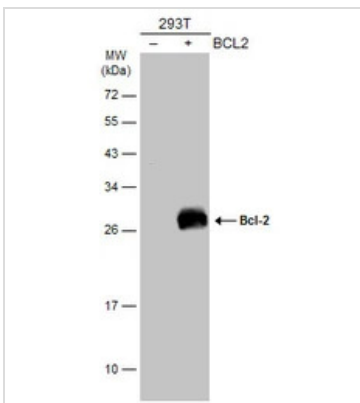
Bcl-2 stained by Bcl-2 antibody (GTX100064) diluted at 1:500.

Antigen Retrieval: Citrate buffer, pH 6.0, 15 min



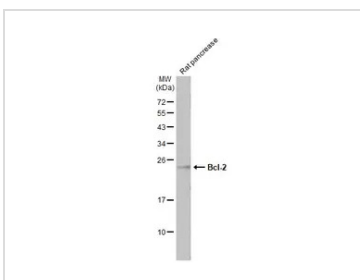
GTX100064 WB Image

Whole cell extract (30 µg) was separated by 12% SDS-PAGE, and the membrane was blotted with Bcl-2 antibody (GTX100064) diluted at 1:1000. The HRP-conjugated anti-rabbit IgG antibody (GTX213110-01) was used to detect the primary antibody, and the signal was developed with Trident ECL plus-Enhanced.



GTX100064 WB Image

Non-transfected (–) and transfected (+) 293T whole cell extracts (30 µg) were separated by 12% SDS-PAGE, and the membrane was blotted with Bcl-2 antibody [N1N2], N-term (GTX100064) diluted at 1:500. The HRP-conjugated anti-rabbit IgG antibody (GTX213110-01) was used to detect the primary antibody.

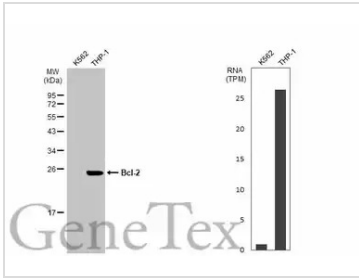


GTX100064 WB Image

Rat tissue extract (50 µg) was separated by 12% SDS-PAGE, and the membrane was blotted with Bcl-2 antibody [N1N2], N-term (GTX100064) diluted at 1:1000. The HRP-conjugated anti-rabbit IgG antibody (GTX213110-01) was used to detect the primary antibody, and the signal was developed with Trident ECL plus-Enhanced.

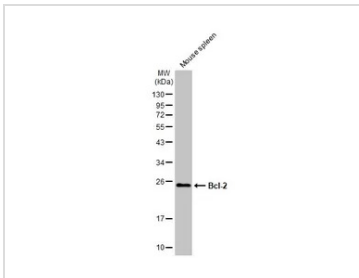


For full product information, images and publications, please visit our [website](https://www.genetex.com).



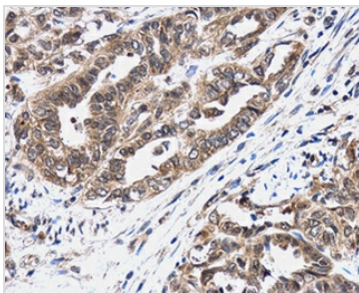
GTX100064 WB Image

Various whole cell extracts (30 µg) were separated by 12% SDS-PAGE, and the membrane was blotted with Bcl-2 antibody [N1N2], N-term (GTX100064) diluted at 1:500. The HRP-conjugated anti-rabbit IgG antibody (GTX213110-01) was used to detect the primary antibody. Corresponding RNA expression data for the same cell lines are based on Human Protein Atlas program.



GTX100064 WB Image

Mouse tissue extract (50 µg) was separated by 12% SDS-PAGE, and the membrane was blotted with Bcl-2 antibody [N1N2], N-term (GTX100064) diluted at 1:1000. The HRP-conjugated anti-rabbit IgG antibody (GTX213110-01) was used to detect the primary antibody.



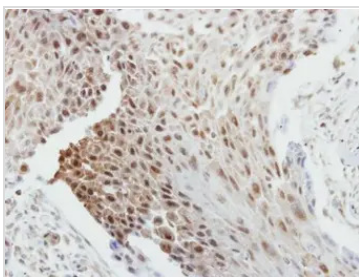
GTX100064 IHC-P Image

Bcl-2 antibody [N1N2], N-term detects Bcl-2 protein at cytoplasm in human squamous metaplasia of cervix by immunohistochemical analysis.

Sample: Paraffin-embedded human cervix.

Bcl-2 antibody [N1N2], N-term (GTX100064) diluted at 1:500.

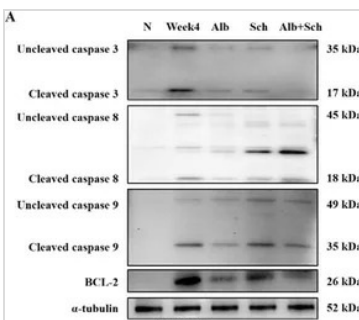
Antigen Retrieval: Citrate buffer, pH 6.0, 15 min



GTX100064 IHC-P Image

Immunohistochemical analysis of paraffin-embedded human breast cancer, using Bcl-2(GTX100064) antibody at 1:250 dilution.

Antigen Retrieval: Trilogy™ (EDTA based, pH 8.0) buffer, 15min

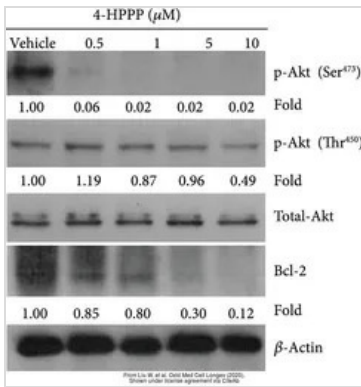


GTX100064 WB Image

The data was published in the journal Biomolecules in 2020.[PMID: 32635653](https://pubmed.ncbi.nlm.nih.gov/32635653/)

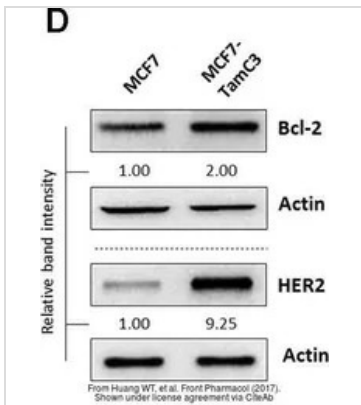


For full product information, images and publications, please visit our [website](https://www.genetex.com).



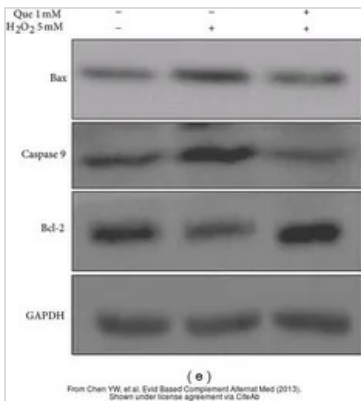
GTx100064 WB Image

The data was published in the journal Oxid Med Cell Longev in 2020. [PMID: 32089770](https://pubmed.ncbi.nlm.nih.gov/32089770/)



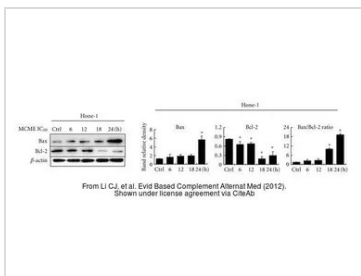
GTx100064 WB Image

The data was published in the journal Front Pharmacol in 2017. [PMID: 29326587](https://pubmed.ncbi.nlm.nih.gov/29326587/)



GTx100064 WB Image

The data was published in the journal Evid Based Complement Alternat Med in 2013. [PMID: 23573126](https://pubmed.ncbi.nlm.nih.gov/23573126/)

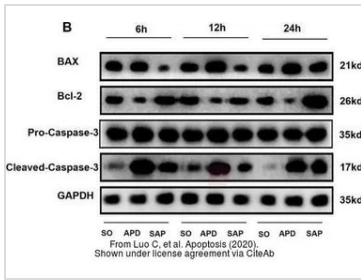


GTx100064 WB Image

The data was published in the journal Evid Based Complement Alternat Med in 2012. [PMID: 23091557](https://pubmed.ncbi.nlm.nih.gov/23091557/)

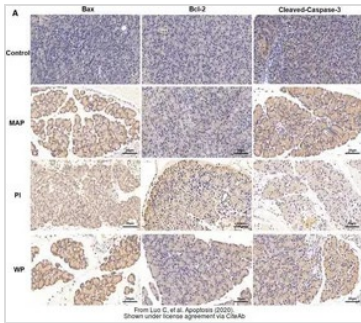


For full product information, images and publications, please visit our [website](https://www.genetex.com).



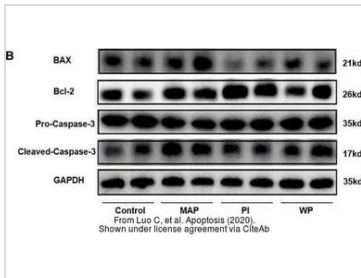
GTx100064 WB Image

The data was published in the journal Apoptosis in 2020. [PMID: 32100210](#)



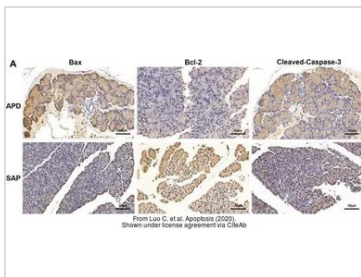
GTx100064 IHC-P Image

The data was published in the journal Apoptosis in 2020. [PMID: 32100210](#)



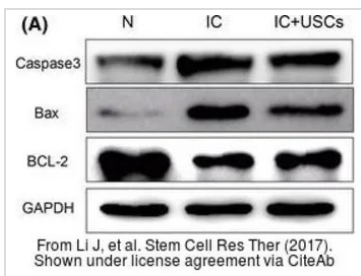
GTx100064 WB Image

The data was published in the journal Apoptosis in 2020. [PMID: 32100210](#)



GTx100064 IHC-P Image

The data was published in the journal Apoptosis in 2020. [PMID: 32100210](#)

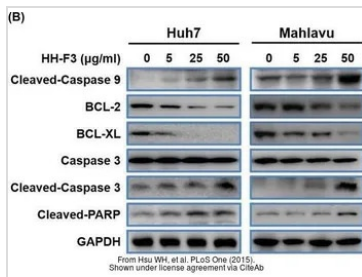


GTx100064 WB Image

The data was published in the journal Stem Cell Res Ther in 2017. [PMID: 28482861](#)

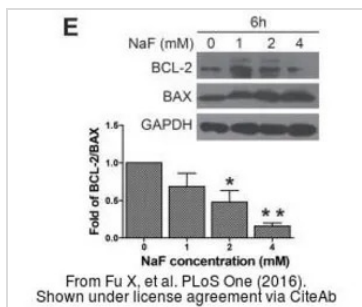


For full product information, images and publications, please visit our [website](#).



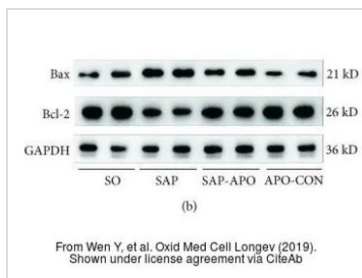
GTx100064 WB Image

The data was published in the journal PLoS One in 2015. [PMID: 25849560](#)



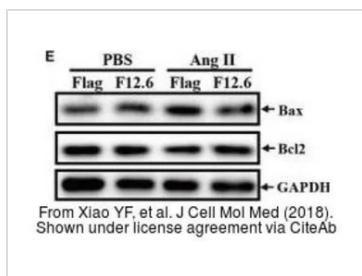
GTx100064 WB Image

The data was published in the journal PLoS One in 2016. [PMID: 26859149](#)



GTx100064 WB Image

The data was published in the journal Oxid Med Cell Longev in 2019. [PMID: 31210840](#)



GTx100064 WB Image

The data was published in the journal J Cell Mol Med in 2018. [PMID: 29682889](#)



For full product information, images and publications, please visit our [website](#).

Bcl-X antibody

Cat. No. GTX105661

Host	Rabbit
Clonality	Polyclonal
Isotype	IgG
Applications	WB, ICC/IF, IHC-P, IP
Reactivity	Human, Mouse, Rat, Dog

References (13)

★★★★★ Review (2)

Package

100 µl, 25 µl

Applications

Application Note

*Optimal dilutions/concentrations should be determined by the researcher.

Suggested dilution	Recommended dilution
WB	1:500-1:3000
ICC/IF	1:100-1:1000
IHC-P	1:100-1:1000
IP	1:100-1:500

Not tested in other applications.

Calculated MW 26 kDa. ([Note](#))

Properties

Form	Liquid
Buffer	PBS, 1% BSA, 20% Glycerol
Preservative	0.025% ProClin 300
Storage	Store as concentrated solution. Centrifuge briefly prior to opening vial. For short-term storage (1-2 weeks), store at 4°C. For long-term storage, aliquot and store at -20°C or below. Avoid multiple freeze-thaw cycles.
Concentration	0.45 mg/ml (Please refer to the vial label for the specific concentration.)
Immunogen	Recombinant protein encompassing a sequence within the center region of human Bcl-X. The exact sequence is proprietary.
Purification	Purified by antigen-affinity chromatography.
Conjugation	Unconjugated

Note

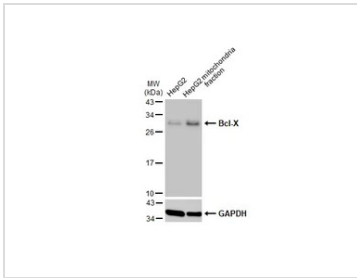
For laboratory research use only. Not for any clinical, therapeutic, or diagnostic use in humans or animals. Not for animal or human consumption.

Purchasers shall not, and agree not to enable third parties to, analyze, copy, reverse engineer or otherwise attempt to determine the structure or sequence of the product.



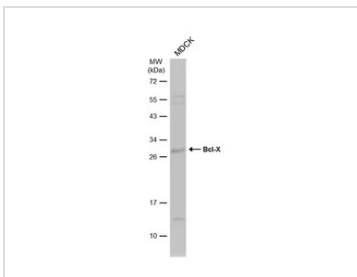
For full product information, images and publications, please visit our [website](#).

DATA IMAGES



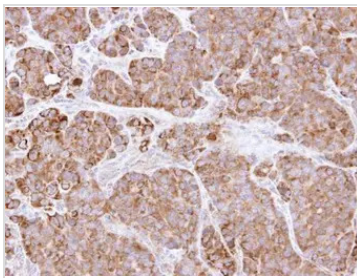
GTx105661 WB Image

HepG2 and mitochondria extracts (30 µg) were separated by SDS-PAGE, and the membrane was blotted with Bcl-X antibody (GTx105661) diluted at 1:1000. The HRP-conjugated anti-rabbit IgG antibody (GTx213110-01) was used to detect the primary antibody.



GTx105661 WB Image

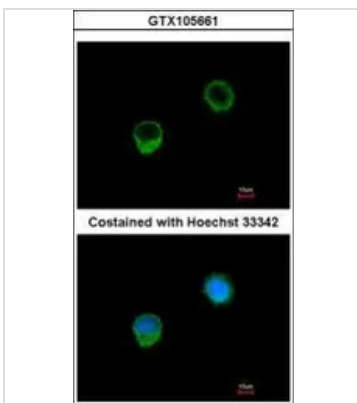
Whole cell extract (30 µg) was separated by 12% SDS-PAGE, and the membrane was blotted with Bcl-X antibody (GTx105661) diluted at 1:1000. The HRP-conjugated anti-rabbit IgG antibody (GTx213110-01) was used to detect the primary antibody, and the signal was developed with Trident ECL plus-Enhanced.



GTx105661 IHC-P Image

Immunohistochemical analysis of paraffin-embedded SW480 xenograft, using BCL2L1 (GTx105661) antibody at 1:500 dilution.

Antigen Retrieval: Trilogy™ (EDTA based, pH 8.0) buffer, 15min

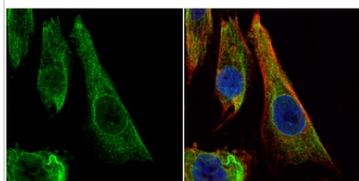


GTx105661 ICC/IF Image

Immunofluorescence analysis of methanol-fixed A549, using BCL-x (GTx105661) antibody at 1:500 dilution.



For full product information, images and publications, please visit our [website](https://www.genetex.com).



GTX105661 ICC/IF Image

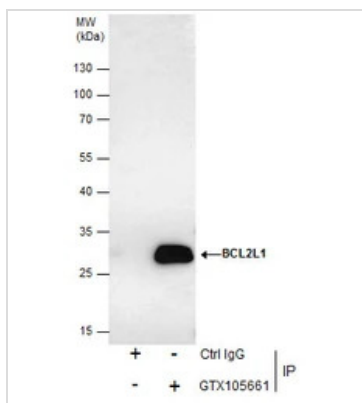
Bcl-X antibody detects Bcl-X protein at cytoplasm by immunofluorescent analysis.

Sample: SK-N-SH cells were fixed in 4% paraformaldehyde at RT for 15 min.

Green: Bcl-X protein stained by Bcl-X antibody (GTX105661) diluted at 1:200.

Red: alpha Tubulin, a cytoskeleton marker, stained by alpha Tubulin antibody [GT114] (GTX628802) diluted at 1:1000.

Blue: Hoechst 33342 staining.

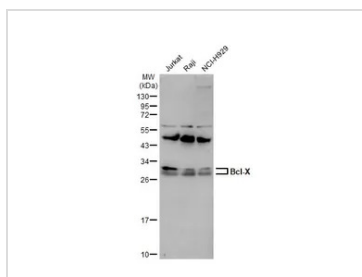


GTX105661 IP Image

Immunoprecipitation of Bcl-X protein from HCT-116 whole cell extracts using 5 µg of Bcl-X antibody (GTX105661).

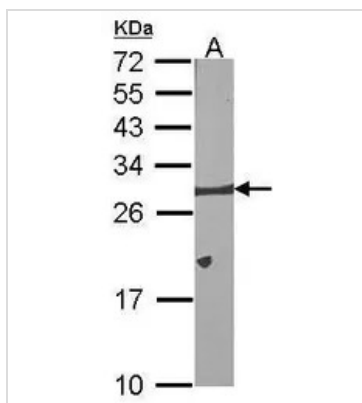
Western blot analysis was performed using Bcl-X antibody (GTX105661) diluted at 1:500.

EasyBlot anti-Rabbit IgG (GTX221666-01) was used as a secondary reagent.



GTX105661 WB Image

Various whole cell extracts (30 µg) were separated by 12% SDS-PAGE, and the membrane was blotted with Bcl-X antibody (GTX105661) diluted at 1:1000. The HRP-conjugated anti-rabbit IgG antibody (GTX213110-01) was used to detect the primary antibody.



GTX105661 WB Image

Sample (30 µg of whole cell lysate)

A:NIH-3T3

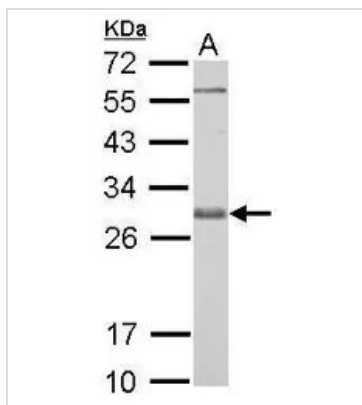
12% SDS PAGE

GTX105661 diluted at 1:1000

The HRP-conjugated anti-rabbit IgG antibody (GTX213110-01) was used to detect the primary antibody.



For full product information, images and publications, please visit our [website](https://www.genetex.com).



GTx105661 WB Image

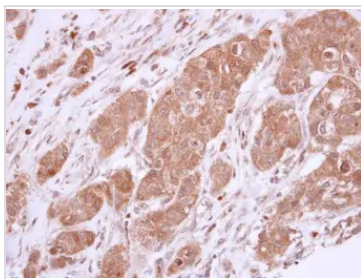
Bcl-X antibody detects BCL2L1 protein by western blot analysis.

A. 30 µg PC-12 whole cell lysate/extract

12% SDS-PAGE

Bcl-X antibody (GTx105661) dilution: 1:1000

The HRP-conjugated anti-rabbit IgG antibody (GTx213110-01) was used to detect the primary antibody.



GTx105661 IHC-P Image

Bcl-X antibody detects Bcl-X protein at cytoplasm in human breast carcinoma by immunohistochemical analysis.

Sample: Paraffin-embedded human breast carcinoma.

Bcl-X antibody (GTx105661) diluted at 1:500.

Antigen Retrieval: Trilogy™ (EDTA based, pH 8.0) buffer, 15min



For full product information, images and publications, please visit our [website](https://www.genetex.com).

BCL2L10 antibody [N2C2], Internal

Cat. No. GTX111872

Host	Rabbit
Clonality	Polyclonal
Isotype	IgG
Applications	WB, ICC/IF, IHC-P
Reactivity	Human

References (1)

Package

100 µl, 25 µl

Applications

Application Note

*Optimal dilutions/concentrations should be determined by the researcher.

Suggested dilution	Recommended dilution
WB	1:500-1:3000
ICC/IF	1:100-1:1000
IHC-P	1:100-1:1000

Not tested in other applications.

Calculated MW 22 kDa. ([Note](#))

Properties

Form	Liquid
Buffer	PBS, 20% Glycerol
Preservative	0.025% ProClin 300
Storage	Store as concentrated solution. Centrifuge briefly prior to opening vial. For short-term storage (1-2 weeks), store at 4°C. For long-term storage, aliquot and store at -20°C or below. Avoid multiple freeze-thaw cycles.
Concentration	1.32 mg/ml (Please refer to the vial label for the specific concentration.)
Immunogen	Carrier-protein conjugated synthetic peptide encompassing a sequence within the center region of human BCL2L10. The exact sequence is proprietary.
Purification	Purified by antigen-affinity chromatography.
Conjugation	Unconjugated

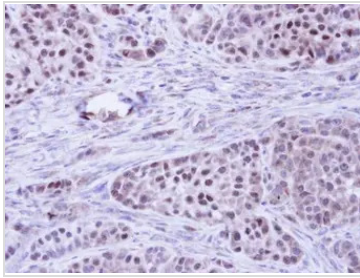
Note

For laboratory research use only. Not for any clinical, therapeutic, or diagnostic use in humans or animals. Not for animal or human consumption.

Purchasers shall not, and agree not to enable third parties to, analyze, copy, reverse engineer or otherwise attempt to determine the structure or sequence of the product.

For full product information, images and publications, please visit our [website](#).

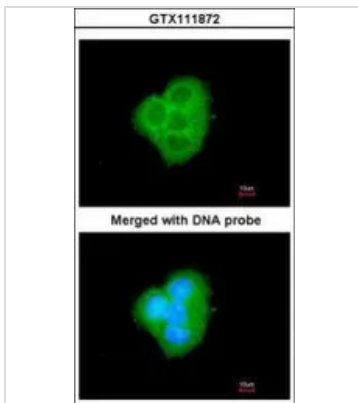
DATA IMAGES



GTXT111872 IHC-P Image

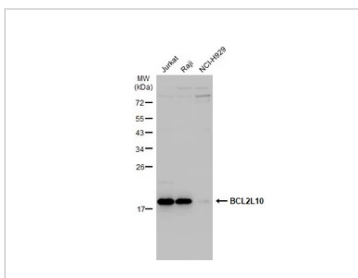
Immunohistochemical analysis of paraffin-embedded A549 Xenograft, using BCL2L10(GTXT111872) antibody at 1:100 dilution.

Antigen Retrieval: Citrate buffer, pH 6.0, 15 min



GTXT111872 ICC/IF Image

Immunofluorescence analysis of paraformaldehyde-fixed A431, using BCL2L10(GTXT111872) antibody at 1:200 dilution.



GTXT111872 WB Image

Various whole cell extracts (30 µg) were separated by 12% SDS-PAGE, and the membrane was blotted with BCL2L10 antibody [N2C2], Internal (GTXT111872) diluted at 1:1000. The HRP-conjugated anti-rabbit IgG antibody (GTXT213110-01) was used to detect the primary antibody.



For full product information, images and publications, please visit our [website](https://www.genetex.com).

Goat Anti-Rabbit IgG antibody (HRP)

Cat. No. GTX213110-01

Host	Goat
Clonality	Polyclonal
Isotype	IgG
Applications	WB, IHC-P, ELISA
Reactivity	Rabbit

References (577)

Package

1 ml

Applications

Application Note

*Optimal dilutions/concentrations should be determined by the researcher.

Suggested dilution	Recommended dilution
WB	1:5000-1:20000
IHC-P	1:100-1:1000
ELISA	1:5000-1:20000

Not tested in other applications.

Properties

Form	Liquid
Buffer	0.05M Tris, 0.15M NaCl, 1%BSA
Preservative	0.025% ProClin 300
Storage	Store as concentrated solution. Centrifuge briefly prior to opening vial. For short-term storage (1-2 weeks), store at 4°C. For long-term storage, aliquot and store at -20°C or below. Avoid multiple freeze-thaw cycles.
Concentration	0.53 mg/ml (Please refer to the vial label for the specific concentration.)
Immunogen	Highly purified whole rabbit IgG
Purification	Purified by antigen-affinity chromatography.
Conjugation	Horseradish peroxidase(HRP)

Note

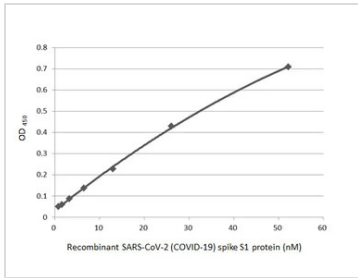
For laboratory research use only. Not for any clinical, therapeutic, or diagnostic use in humans or animals. Not for animal or human consumption.

Purchasers shall not, and agree not to enable third parties to, analyze, copy, reverse engineer or otherwise attempt to determine the structure or sequence of the product.



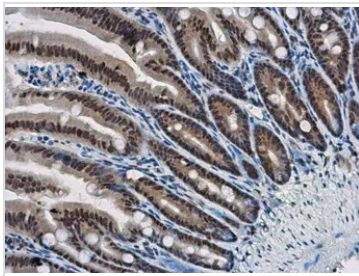
For full product information, images and publications, please visit our [website](#).

DATA IMAGES



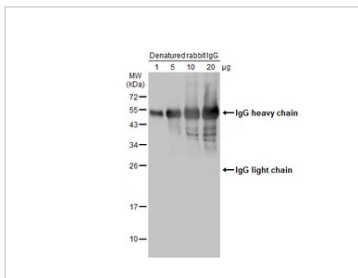
GTX213110-01 ELISA Image

Indirect ELISA analysis performed by coating plate with recombinant SARS-CoV-2 (COVID-19) Spike S1 protein, His tag (active) (GTX135817-pro) (52.15-0.81 nM). Coated protein was probed with SARS-CoV-2 (COVID-19) Spike S1 antibody [HL134] (GTX635671) (1 µg/mL). Goat anti-rabbit IgG antibody (HRP) (GTX213110-01) (1:10000) was used to detect bound primary antibody.



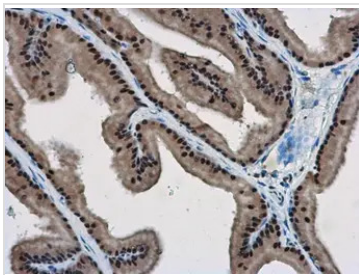
GTX213110-01 IHC-P Image

WBP11 antibody detects WBP11 protein at nucleus in mouse intestine by immunohistochemical analysis.
Sample: Paraffin-embedded mouse intestine.
WBP11 antibody (GTX118654) diluted at 1:500.
The signal was developed by Rabbit IgG antibody (HRP) (GTX213110-01)
Antigen Retrieval: Citrate buffer, pH 6.0, 15 min



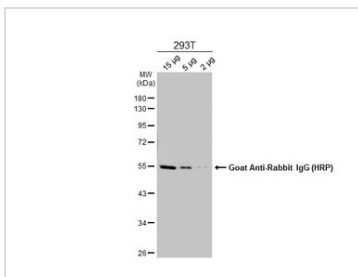
GTX213110-01 WB Image

Various amounts of denatured rabbit IgG protein were separated by 12% SDS-PAGE, and the membrane was blotted with HRP-conjugated anti-rabbit IgG antibody (GTX213110-01) diluted at 1:5000.



GTX213110-01 IHC-P Image

WBP11 antibody detects WBP11 protein at nucleus in rat prostate by immunohistochemical analysis.
Sample: Paraffin-embedded rat prostate.
WBP11 antibody (GTX118654) diluted at 1:500.
The signal was developed by Rabbit IgG antibody (HRP) (GTX213110-01).
Antigen Retrieval: Citrate buffer, pH 6.0, 15 min

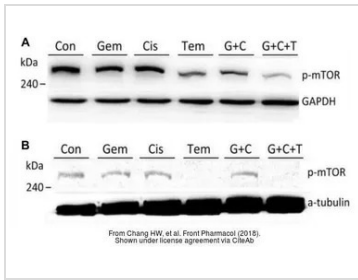


GTX213110-01 WB Image

Various whole cell extracts were separated by 10% SDS-PAGE, and the membrane was blotted with alpha Tubulin antibody (GTX112141) diluted at 1:10000. The HRP-conjugated anti-rabbit IgG antibody (GTX213110-01) was used to detect the primary antibody.

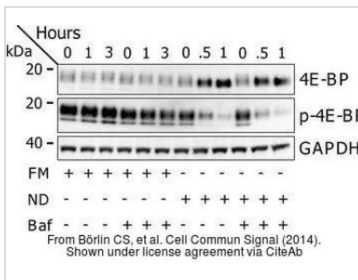


For full product information, images and publications, please visit our [website](https://www.genetex.com).



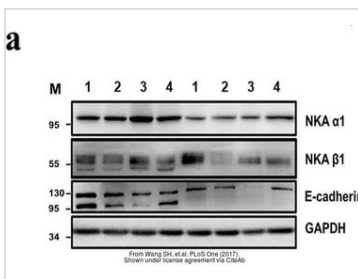
GTx213110-01 WB Image

The data was published in the journal Front Pharmacol in 2018. [PMID: 30087612](https://pubmed.ncbi.nlm.nih.gov/30087612/)



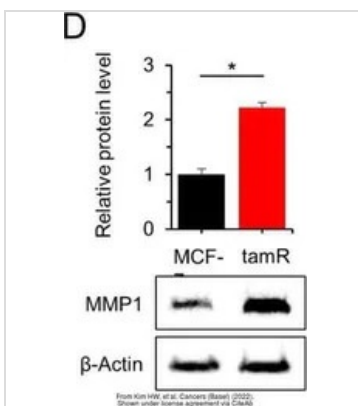
GTx213110-01 WB Image

The data was published in the journal Cell Commun Signal in 2014. [PMID: 25214434](https://pubmed.ncbi.nlm.nih.gov/25214434/)



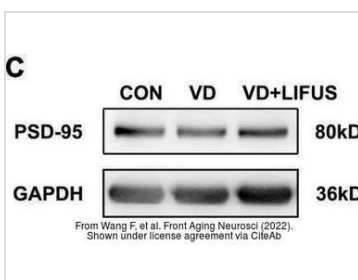
GTx213110-01 WB Image

The data was published in the journal PLoS One in 2017. [PMID: 28832634](https://pubmed.ncbi.nlm.nih.gov/28832634/)



GTx213110-01 WB Image

The data was published in the 2022 in Cancers (Basel). [PMID: 35267540](https://pubmed.ncbi.nlm.nih.gov/35267540/)

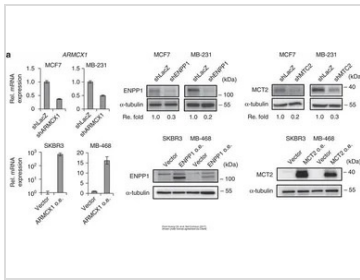


GTx213110-01 WB Image

The data was published in the 2022 in Front Aging Neurosci. [PMID: 35264943](https://pubmed.ncbi.nlm.nih.gov/35264943/)

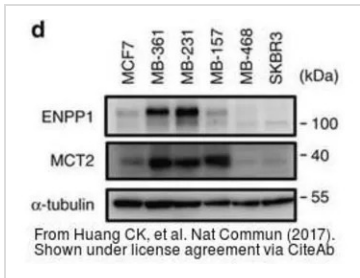


For full product information, images and publications, please visit our [website](https://www.genetex.com).



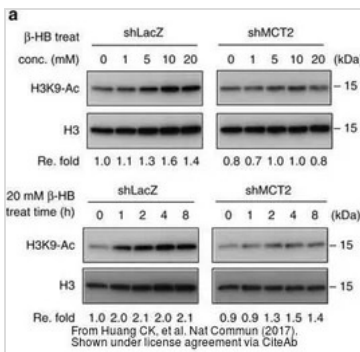
GTx213110-01 WB Image

The data was published in the 2017 in Nat Commun. [PMID: 28281525](#)



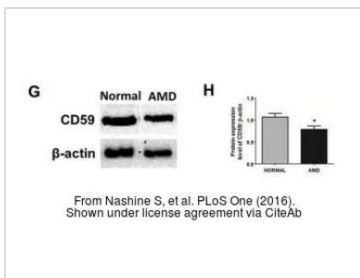
GTx213110-01 WB Image

The data was published in the 2017 in Nat Commun. [PMID: 28281525](#)



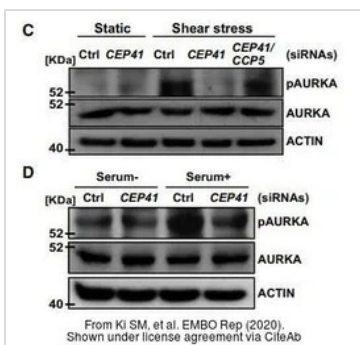
GTx213110-01 WB Image

The data was published in the 2017 in Nat Commun. [PMID: 28281525](#)



GTx213110-01 WB Image

The data was published in the 2016 in PLoS One. [PMID: 27486856](#)

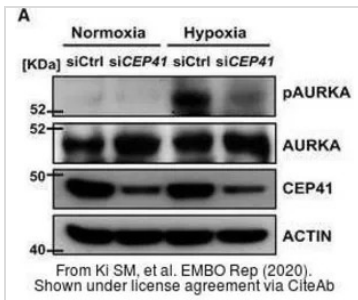


GTx213110-01 WB Image

The data was published in the journal EMBO Rep in 2020. [PMID: 31885126](#)

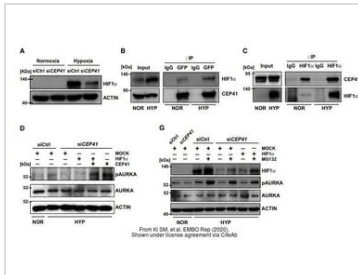


For full product information, images and publications, please visit our [website](#).



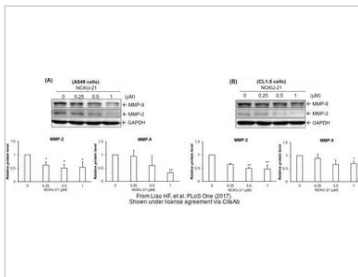
GTx213110-01 WB Image

The data was published in the journal EMBO Rep in 2020. [PMID: 31885126](#)



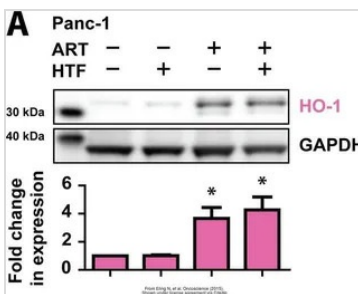
GTx213110-01 WB Image

The data was published in the journal EMBO Rep in 2020. [PMID: 31885126](#)



GTx213110-01 WB Image

The data was published in the journal PLoS One in 2017. [PMID: 28945763](#)



GTx213110-01 WB Image

The data was published in the journal Oncoscience in 2015. [PMID: 26097885](#)



For full product information, images and publications, please visit our [website](#).

MCL1 antibody [HL1544]

Cat. No. GTX637019

Host	Rabbit
Clonality	Monoclonal
Isotype	IgG
Applications	WB, IHC-P
Reactivity	Human, Mouse, Rat, Cat, Dog

Package

100 µl, 25 µl

Applications

Application Note

*Optimal dilutions/concentrations should be determined by the researcher.

Suggested dilution	Recommended dilution
WB	1:500-1:3000
IHC-P	Assay dependent

Not tested in other applications.

Observed MW (kDa) 35, 40 kDa.

Properties

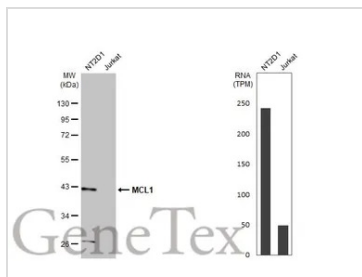
Form	Liquid
Buffer	PBS
Preservative	No preservative
Storage	Store as concentrated solution. Centrifuge briefly prior to opening vial. For short-term storage (1-2 weeks), store at 4°C. For long-term storage, aliquot and store at -20°C or below. Avoid multiple freeze-thaw cycles.
Concentration	1 mg/ml (Please refer to the vial label for the specific concentration.)
Immunogen	Recombinant protein encompassing a sequence within the center region of human MCL1. The exact sequence is proprietary.
Purification	Affinity purified by Protein A.
Conjugation	Unconjugated

Note

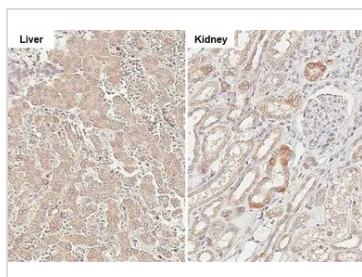
For laboratory research use only. Not for any clinical, therapeutic, or diagnostic use in humans or animals. Not for animal or human consumption.

Purchasers shall not, and agree not to enable third parties to, analyze, copy, reverse engineer or otherwise attempt to determine the structure or sequence of the product.

For full product information, images and publications, please visit our [website](#).

DATA IMAGES

GTX637019 WB Image

Various whole cell extracts (30 µg) were separated by 10% SDS-PAGE, and the membrane was blotted with MCL1 antibody [HL1544] (GTX637019) diluted at 1:1000. The HRP-conjugated anti-rabbit IgG antibody (GTX213110-01) was used to detect the primary antibody. Corresponding RNA expression data for the same cell lines are based on Human Protein Atlas program.

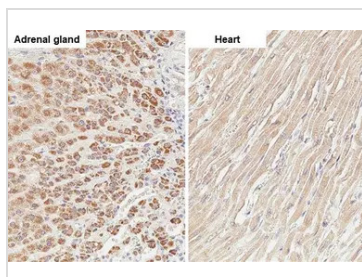

GTX637019 IHC-P Image

MCL1 antibody [HL1544] detects MCL1 protein by immunohistochemical analysis.

Sample: Paraffin-embedded dog tissue.

MCL1 stained by MCL1 antibody [HL1544] (GTX637019) diluted at 1:100.

Antigen Retrieval: Citrate buffer, pH 6.0, 15 min

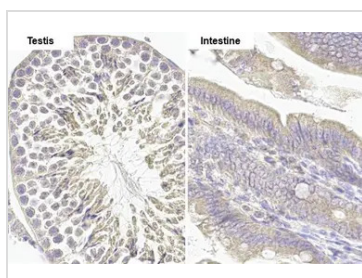

GTX637019 IHC-P Image

MCL1 antibody [HL1544] detects MCL1 protein by immunohistochemical analysis.

Sample: Paraffin-embedded cat tissue.

MCL1 stained by MCL1 antibody [HL1544] (GTX637019) diluted at 1:100.

Antigen Retrieval: Citrate buffer, pH 6.0, 15 min

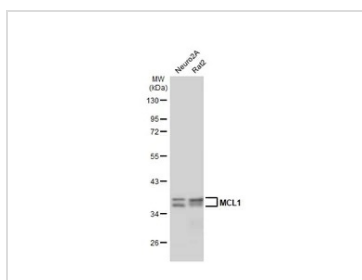

GTX637019 IHC-P Image

MCL1 antibody [HL1544] detects MCL1 protein by immunohistochemical analysis.

Sample: Paraffin-embedded mouse tissues.

MCL1 stained by MCL1 antibody [HL1544] (GTX637019) diluted at 1:100.

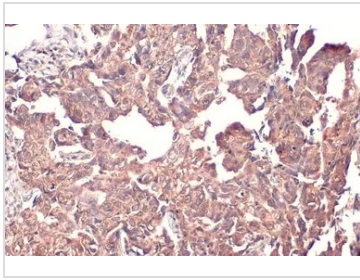
Antigen Retrieval: Citrate buffer, pH 6.0, 15 min


GTX637019 WB Image

Various whole cell extracts (30 µg) were separated by 10% SDS-PAGE, and the membrane was blotted with MCL1 antibody [HL1544] (GTX637019) diluted at 1:1000. The HRP-conjugated anti-rabbit IgG antibody (GTX213110-01) was used to detect the primary antibody.



For full product information, images and publications, please visit our [website](https://www.genetex.com).



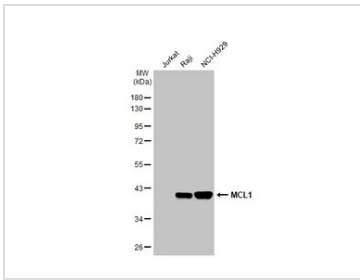
GTX637019 IHC-P Image

MCL1 antibody [HL1544] detects MCL1 protein at cytoplasm by immunohistochemical analysis.

Sample: Paraffin-embedded human breast carcinoma.

MCL1 stained by MCL1 antibody [HL1544] (GTX637019) diluted at 1:100.

Antigen Retrieval: Citrate buffer, pH 6.0, 15 min



GTX637019 WB Image

Various whole cell extracts (30 µg) were separated by 10% SDS-PAGE, and the membrane was blotted with

MCL1 antibody [HL1544] (GTX637019) diluted at 1:1000. The HRP-conjugated anti-rabbit IgG antibody

(GTX213110-01) was used to detect the primary antibody.



For full product information, images and publications, please visit our [website](#).