

GTX300026

## Bcl-2 Family Antibody Panel— general apoptosis research

Reference ( 1 )

### Product Content

Cat No	Product Name	Reactivity	Application	Package
GTX100063	BAK antibody [N1N2], N-term	Human	WB, IHC-P	25 µl
GTX100064	Bcl-2 antibody [N1N2], N-term	Human, Mouse, Rat, Zebrafish, Cat, Dog	WB, ICC/IF, IHC-P	25 µl
GTX102026	MCL1 antibody	Human, Mouse	WB, ICC/IF, IHC-P, IHC	25 µl
GTX105661	Bcl-X antibody	Human, Mouse, Rat, Dog	WB, ICC/IF, IHC-P, IP	25 µl
GTX109675	PUMA antibody [C2C3], C-term	Human	WB, IHC-P, IP	25 µl
GTX109683	Bax antibody [N1N2], N-term	Human, Mouse, Rat	WB, ICC/IF, IHC-P, IHC-Fr, IP	25 µl
GTX130108	Bad antibody	Human	WB, IHC-P	25 µl
GTX213110-01	Goat Anti-Rabbit IgG antibody (HRP)	Rabbit	WB, IHC-P, ELISA	25 µl

### Note

For In vitro laboratory use only. Not for any clinical, therapeutic, or diagnostic use in humans or animals. Not for animal or human consumption.



For full product information, images and publications, please visit our [website](#).

## BAK antibody [N1N2], N-term

Cat. No. GTX100063

Host	Rabbit
Clonality	Polyclonal
Isotype	IgG
Application	WB, IHC-P
Reactivity	Human

Reference ( 8 )

★★★★★ Review ( 1 )

Package

100 µl, 25 µl

## APPLICATION

## Application Note

\*Optimal dilutions/concentrations should be determined by the researcher.

Suggested dilution	Recommended dilution
WB	1:500-1:3000
IHC-P	1:100-1:1000

Not tested in other applications.

Calculated MW 23 kDa. ( [Note](#) )

## PROPERTIES

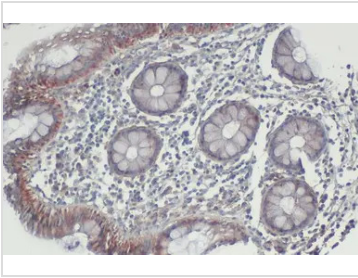
Form	Liquid
Buffer	PBS, 20% Glycerol
Preservative	0.01% Thimerosal
Storage	Store as concentrated solution. Centrifuge briefly prior to opening vial. For short-term storage (1-2 weeks), store at 4°C. For long-term storage, aliquot and store at -20°C or below. Avoid multiple freeze-thaw cycles.
Concentration	1 mg/ml (Please refer to the vial label for the specific concentration.)
Immunogen	Carrier-protein conjugated synthetic peptide encompassing a sequence within the N-terminus region of human BAK. The exact sequence is proprietary.
Purification	Purified by antigen-affinity chromatography.
Conjugation	Unconjugated
Note	<p>For laboratory research use only. Not for any clinical, therapeutic, or diagnostic use in humans or animals. Not for animal or human consumption.</p> <p>Purchasers shall not, and agree not to enable third parties to, analyze, copy, reverse engineer or otherwise attempt to determine the structure or sequence of the product.</p>



For full product information, images and publications, please visit our [website](#).

Date 2024 / 04 / 19 Page 2 of 33

## DATA IMAGES



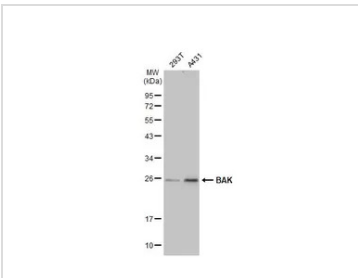
### GTX100063 IHC-P Image

BAK antibody [N1N2], N-term detects BAK protein at mitochondria by immunohistochemical analysis.

Sample: Paraffin-embedded human colon.

BAK stained by BAK antibody [N1N2], N-term (GTX100063) diluted at 1:500.

Antigen Retrieval: Citrate buffer, pH 6.0, 15 min



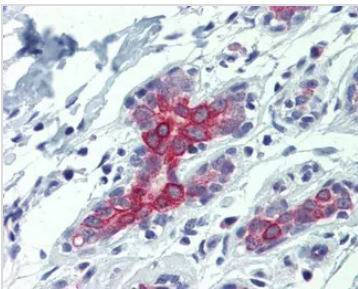
### GTX100063 WB Image

Various whole cell extracts (30 µg) were separated by 12% SDS-PAGE, and the membrane was blotted with

BAK antibody [N1N2], N-term (GTX100063) diluted at 1:1000. The HRP-conjugated anti-rabbit IgG

antibody (GTX213110-01) was used to detect the primary antibody, and the signal was developed with

Trident ECL plus-Enhanced.



### GTX100063 IHC-P Image

Immunohistochemical analysis of paraffin-embedded human liver, bile duct, using BAK1(GTX100063) antibody(10 µg/ml).

Antigen Retrieval: Trilogy™ (EDTA based, pH 8.0) buffer, 15min



For full product information, images and publications, please visit our [website](https://www.genetex.com).

## Bcl-2 antibody [N1N2], N-term

Cat. No. GTX100064

Host	Rabbit
Clonality	Polyclonal
Isotype	IgG
Application	WB, ICC/IF, IHC-P
Reactivity	Human, Mouse, Rat, Zebrafish, Cat, Dog

Reference ( 141 )

★★★★★ Review ( 5 )

Package

100 µl, 25 µl

## PRODUCT

## Summary

BCL-2 antibody recognizes BCL-2 protein. BCL-2 (26 kDa) regulates mitochondrial dynamics, is involved in the regulation of mitochondrial fusion and fission, and is associated with apoptosis. Abnormal expression of BCL-2 protein is linked to various cancers, autoimmunity, and psychiatric disorders. This BCL-2 antibody is a widely published rabbit polyclonal validated for multiple applications.

## APPLICATION

## Application Note

\*Optimal dilutions/concentrations should be determined by the researcher.

Suggested dilution	Recommended dilution
WB	1:500-1:3000
ICC/IF	1:100-1:1000
IHC-P	1:100-1:1000

Not tested in other applications.

**Calculated MW** 26 kDa. ( [Note](#) )

## PROPERTIES

Form	Liquid
Buffer	PBS, 1% BSA, 20% Glycerol
Preservative	0.025% ProClin 300
Storage	Store as concentrated solution. Centrifuge briefly prior to opening vial. For short-term storage (1-2 weeks), store at 4°C. For long-term storage, aliquot and store at -20°C or below. Avoid multiple freeze-thaw cycles.
Concentration	0.2 mg/ml (Please refer to the vial label for the specific concentration.)
Immunogen	Carrier-protein conjugated synthetic peptide encompassing a sequence within the N-terminus region of human Bcl-2. The exact sequence is proprietary.
Purification	Purified by antigen-affinity chromatography.
Conjugation	Unconjugated



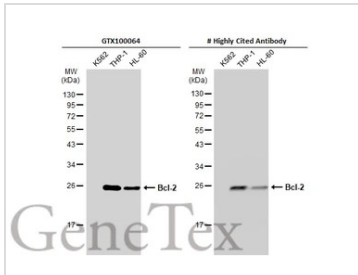
For full product information, images and publications, please visit our [website](#).

Date 2024 / 04 / 19 Page 4 of 33

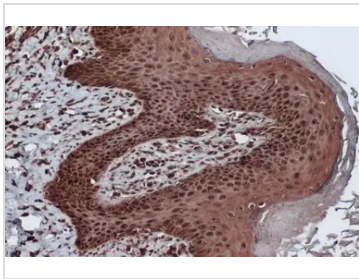
For laboratory research use only. Not for any clinical, therapeutic, or diagnostic use in humans or animals. Not for animal or human consumption.

**Note**

Purchasers shall not, and agree not to enable third parties to, analyze, copy, reverse engineer or otherwise attempt to determine the structure or sequence of the product.

**DATA IMAGES**

**GTX100064 WB Image**

Various whole cell extracts (30 µg) were separated by 12% SDS-PAGE, and the membrane was blotted with Bcl-2 antibody [N1N2], N-term (GTX100064) diluted at 1:500. The HRP-conjugated anti-rabbit IgG antibody (GTX213110-01) was used to detect the primary antibody.

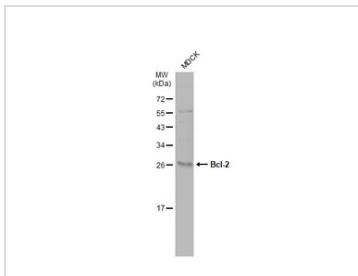

**GTX100064 IHC-P Image**

Bcl-2 antibody detects Bcl-2 protein at cytoplasm and nucleus by immunohistochemical analysis.

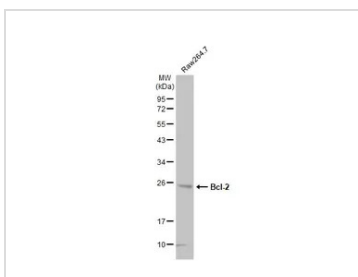
Sample: Paraffin-embedded dog skin.

Bcl-2 stained by Bcl-2 antibody (GTX100064) diluted at 1:500.

Antigen Retrieval: Citrate buffer, pH 6.0, 15 min


**GTX100064 WB Image**

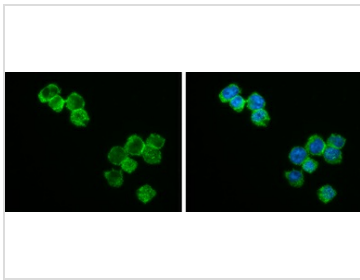
Whole cell extract (30 µg) was separated by 12% SDS-PAGE, and the membrane was blotted with Bcl-2 antibody (GTX100064) diluted at 1:1000. The HRP-conjugated anti-rabbit IgG antibody (GTX213110-01) was used to detect the primary antibody, and the signal was developed with Trident ECL plus-Enhanced.


**GTX100064 WB Image**

Whole cell extract (30 µg) was separated by 12% SDS-PAGE, and the membrane was blotted with Bcl-2 antibody [N1N2], N-term (GTX100064) diluted at 1:1000. The HRP-conjugated anti-rabbit IgG antibody (GTX213110-01) was used to detect the primary antibody.



For full product information, images and publications, please visit our [website](https://www.genetex.com).

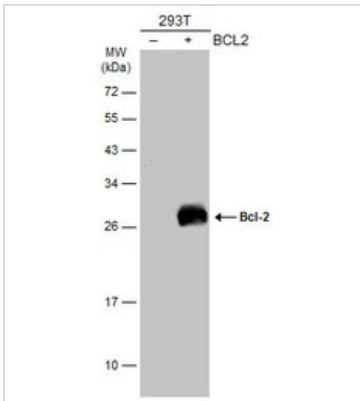

**GTK100064 ICC/IF Image**

Bcl-2 antibody [N1N2], N-term detects Bcl-2 protein at cytoplasm and nucleus by immunofluorescent analysis.

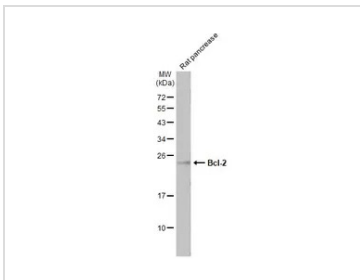
Sample: THP-1 cells were fixed in 4% paraformaldehyde at RT for 15 min.

Green: Bcl-2 stained by Bcl-2 antibody [N1N2], N-term (GTK100064) diluted at 1:500.

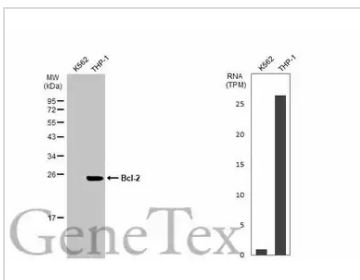
Blue: Fluoroshield with DAPI (GTK30920).


**GTK100064 WB Image**

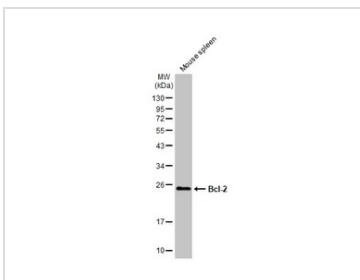
Non-transfected (-) and transfected (+) 293T whole cell extracts (30 µg) were separated by 12% SDS-PAGE, and the membrane was blotted with Bcl-2 antibody [N1N2], N-term (GTK100064) diluted at 1:500. The HRP-conjugated anti-rabbit IgG antibody (GTK213110-01) was used to detect the primary antibody.


**GTK100064 WB Image**

Rat tissue extract (50 µg) was separated by 12% SDS-PAGE, and the membrane was blotted with Bcl-2 antibody [N1N2], N-term (GTK100064) diluted at 1:1000. The HRP-conjugated anti-rabbit IgG antibody (GTK213110-01) was used to detect the primary antibody, and the signal was developed with Trident ECL plus-Enhanced.


**GTK100064 WB Image**

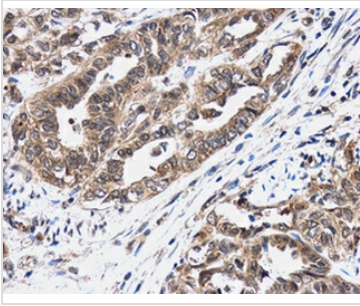
Various whole cell extracts (30 µg) were separated by 12% SDS-PAGE, and the membrane was blotted with Bcl-2 antibody [N1N2], N-term (GTK100064) diluted at 1:500. The HRP-conjugated anti-rabbit IgG antibody (GTK213110-01) was used to detect the primary antibody. Corresponding RNA expression data for the same cell lines are based on Human Protein Atlas program.


**GTK100064 WB Image**

Mouse tissue extract (50 µg) was separated by 12% SDS-PAGE, and the membrane was blotted with Bcl-2 antibody [N1N2], N-term (GTK100064) diluted at 1:1000. The HRP-conjugated anti-rabbit IgG antibody (GTK213110-01) was used to detect the primary antibody.



For full product information, images and publications, please visit our [website](https://www.genetex.com).



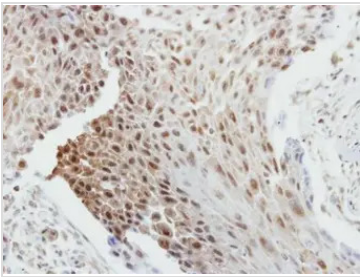
#### GTXT100064 IHC-P Image

Bcl-2 antibody [N1N2], N-term detects Bcl-2 protein at cytoplasm in human squamous metaplasia of cervix by immunohistochemical analysis.

Sample: Paraffin-embedded human cervix.

Bcl-2 antibody [N1N2], N-term (GTXT100064) diluted at 1:500.

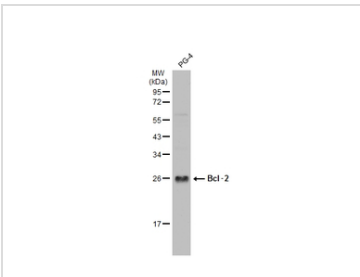
Antigen Retrieval: Citrate buffer, pH 6.0, 15 min



#### GTXT100064 IHC-P Image

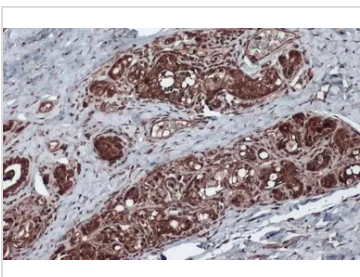
Immunohistochemical analysis of paraffin-embedded human breast cancer, using Bcl-2(GTXT100064) antibody at 1:250 dilution.

Antigen Retrieval: Trilogy™ (EDTA based, pH 8.0) buffer, 15min



#### GTXT100064 WB Image

PG-4 whole cell extract (30 µg) was separated by 12% SDS-PAGE, and the membrane was blotted with Bcl-2 antibody (GTXT100064) diluted at 1:1000. The HRP-conjugated anti-rabbit IgG antibody (GTXT213110-01) was used to detect the primary antibody, and the signal was developed with Trident ECL plus-Enhanced.



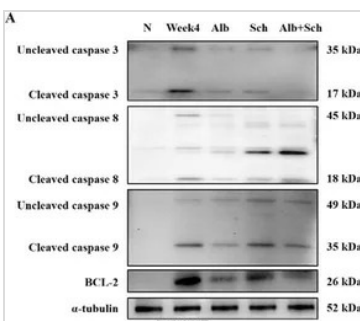
#### GTXT100064 IHC-P Image

Bcl-2 antibody detects Bcl-2 protein at cytoplasm and nucleus by immunohistochemical analysis.

Sample: Paraffin-embedded dog mammary gland.

Bcl-2 stained by Bcl-2 antibody (GTXT100064) diluted at 1:500.

Antigen Retrieval: Citrate buffer, pH 6.0, 15 min



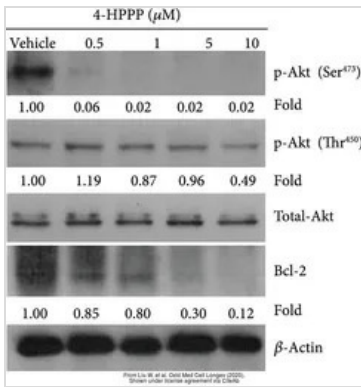
#### GTXT100064 WB Image

The data was published in the journal Biomolecules in 2020.[PMID: 32635653](https://pubmed.ncbi.nlm.nih.gov/32635653/)



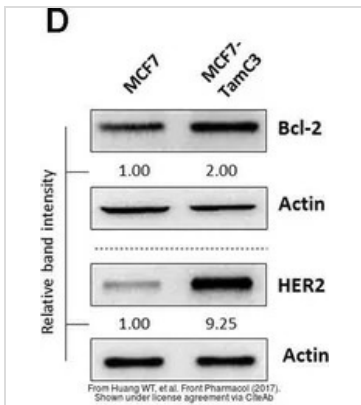
For full product information, images and publications, please visit our [website](https://www.genetex.com).





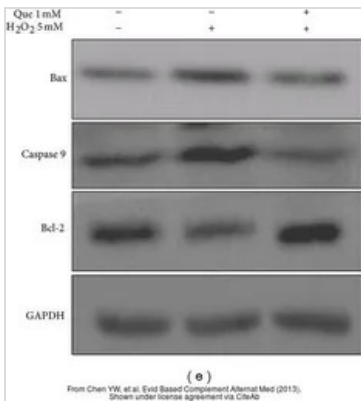
#### GTx100064 WB Image

The data was published in the journal Oxid Med Cell Longev in 2020. [PMID: 32089770](https://pubmed.ncbi.nlm.nih.gov/32089770/)



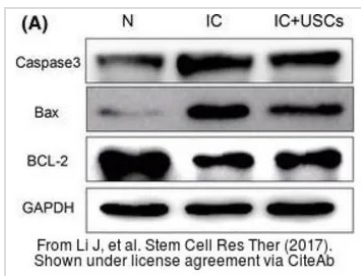
#### GTx100064 WB Image

The data was published in the journal Front Pharmacol in 2017. [PMID: 29326587](https://pubmed.ncbi.nlm.nih.gov/29326587/)



#### GTx100064 WB Image

The data was published in the journal Evid Based Complement Alternat Med in 2013. [PMID: 23573126](https://pubmed.ncbi.nlm.nih.gov/23573126/)



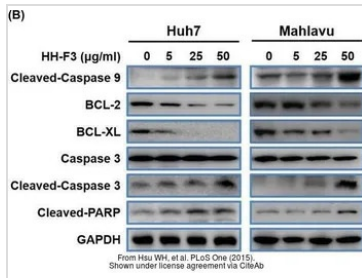
#### GTx100064 WB Image

The data was published in the journal Stem Cell Res Ther in 2017. [PMID: 28482861](https://pubmed.ncbi.nlm.nih.gov/28482861/)



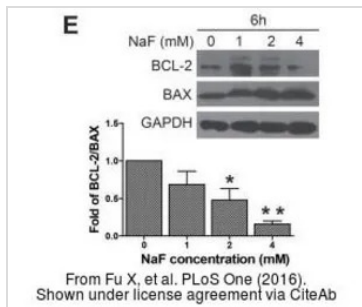
For full product information, images and publications, please visit our [website](https://www.genetex.com).





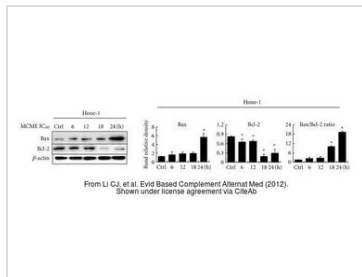
#### GTx100064 WB Image

The data was published in the journal PLoS One in 2015. [PMID: 25849560](#)



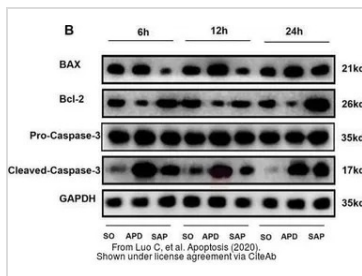
#### GTx100064 WB Image

The data was published in the journal PLoS One in 2016. [PMID: 26859149](#)



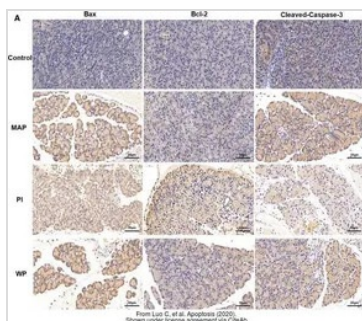
#### GTx100064 WB Image

The data was published in the journal Evid Based Complement Alternat Med in 2012. [PMID: 23091557](#)



#### GTx100064 WB Image

The data was published in the journal Apoptosis in 2020. [PMID: 32100210](#)

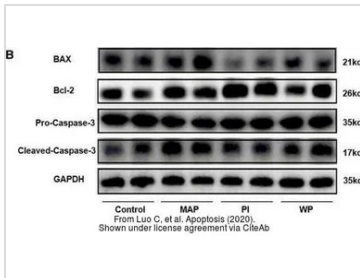


#### GTx100064 IHC-P Image

The data was published in the journal Apoptosis in 2020. [PMID: 32100210](#)

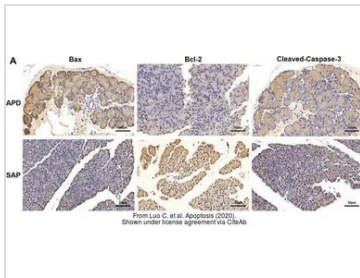


For full product information, images and publications, please visit our [website](#).



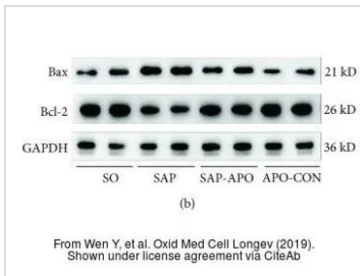
#### GTx100064 WB Image

The data was published in the journal Apoptosis in 2020. [PMID: 32100210](#)



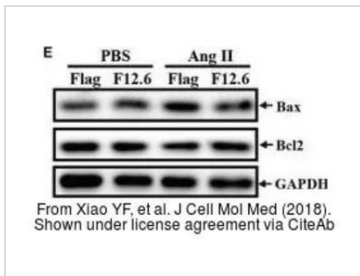
#### GTx100064 IHC-P Image

The data was published in the journal Apoptosis in 2020. [PMID: 32100210](#)



#### GTx100064 WB Image

The data was published in the journal Oxid Med Cell Longev in 2019. [PMID: 31210840](#)



#### GTx100064 WB Image

The data was published in the journal J Cell Mol Med in 2018. [PMID: 29682889](#)



For full product information, images and publications, please visit our [website](#).

## MCL1 antibody

Cat. No. GTX102026

Host	Rabbit
Clonality	Polyclonal
Isotype	IgG
Application	WB, ICC/IF, IHC-P, IHC
Reactivity	Human, Mouse

Reference ( 10 )

Package

100 µl, 25 µl

## APPLICATION

## Application Note

\*Optimal dilutions/concentrations should be determined by the researcher.

Suggested dilution	Recommended dilution
WB	1:500-1:3000
ICC/IF	1:100-1:1000
IHC-P	1:100-1:1000
IHC	Assay dependent

Not tested in other applications.

Calculated MW 37 kDa. ( [Note](#) )

## PROPERTIES

Form	Liquid
Buffer	PBS, 20% Glycerol
Preservative	0.025% ProClin 300
Storage	Store as concentrated solution. Centrifuge briefly prior to opening vial. For short-term storage (1-2 weeks), store at 4°C. For long-term storage, aliquot and store at -20°C or below. Avoid multiple freeze-thaw cycles.
Concentration	0.33 mg/ml (Please refer to the vial label for the specific concentration.)
Immunogen	Recombinant protein encompassing a sequence within the center region of human MCL1. The exact sequence is proprietary.
Purification	Purified by antigen-affinity chromatography.
Conjugation	Unconjugated

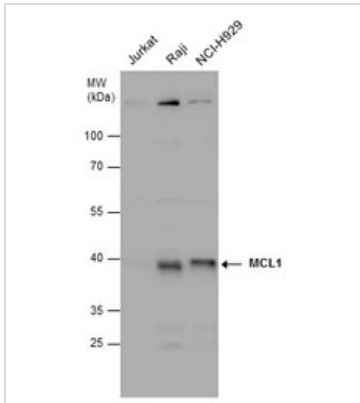
## Note

For laboratory research use only. Not for any clinical, therapeutic, or diagnostic use in humans or animals. Not for animal or human consumption.

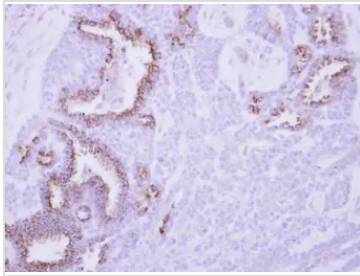
Purchasers shall not, and agree not to enable third parties to, analyze, copy, reverse engineer or otherwise attempt to determine the structure or sequence of the product.



For full product information, images and publications, please visit our [website](#).

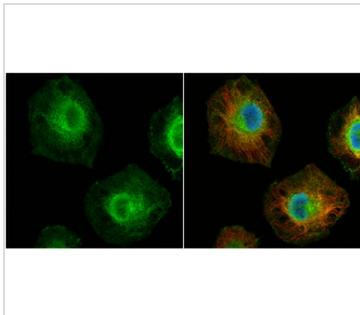
**DATA IMAGES**

**GTx102026 WB Image**

MCL1 antibody detects MCL1 protein by Western blot analysis. Various whole cell extracts (30 µg) were separated by 10% SDS-PAGE, and the membrane was blotted with MCL1 antibody (GTx102026) diluted at 1:1000.


**GTx102026 IHC-P Image**

Immunohistochemical analysis of paraffin-embedded human breast cancer, using MCL1(GTx102026) antibody at 1:250 dilution.

Antigen Retrieval: Trilogy™ (EDTA based, pH 8.0) buffer, 15min


**GTx102026 ICC/IF Image**

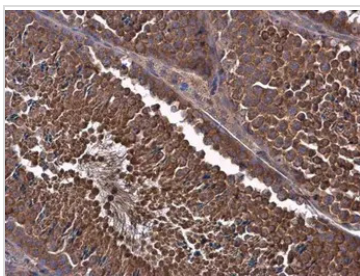
MCL1 antibody detects MCL1 protein at cytoplasm and nucleus by immunofluorescent analysis.

Sample: HeLa cells were fixed in 4% paraformaldehyde at RT for 15 min.

Green: MCL1 protein stained by MCL1 antibody (GTx102026) diluted at 1:200.

Red: alpha Tubulin, a cytoskeleton marker, stained by alpha Tubulin antibody [B-5-1-2] (GTx11304) diluted at 1:10000.

Blue: Hoechst 33342 staining.


**GTx102026 IHC-P Image**

MCL1 antibody detects MCL1 protein at cytoplasm in mouse testis by immunohistochemical analysis.

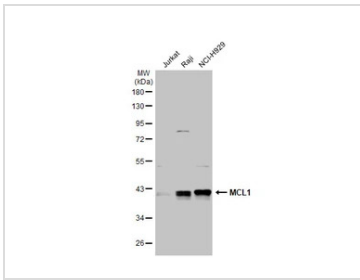
Sample: Paraffin-embedded mouse testis.

MCL1 antibody (GTx102026) diluted at 1:500.

Antigen Retrieval: Citrate buffer, pH 6.0, 15 min

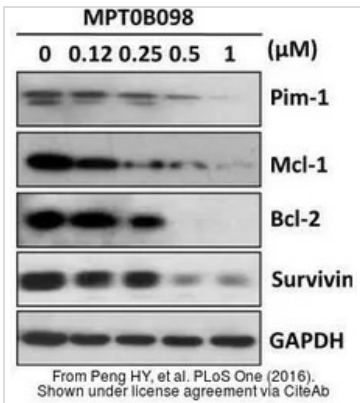


For full product information, images and publications, please visit our [website](https://www.genetex.com).



#### GTx102026 WB Image

Various whole cell extracts (30 µg) were separated by 10% SDS-PAGE, and the membrane was blotted with MCL1 antibody (GTx102026) diluted at 1:1000. The HRP-conjugated anti-rabbit IgG antibody (GTx213110-01) was used to detect the primary antibody.



#### GTx102026 WB Image

The data was published in the journal PLoS One in 2016. [PMID: 27367272](https://pubmed.ncbi.nlm.nih.gov/27367272/)



For full product information, images and publications, please visit our [website](https://www.genetex.com).

# Bcl-X antibody

**Cat. No. GTX105661**

<b>Host</b>	Rabbit
<b>Clonality</b>	Polyclonal
<b>Isotype</b>	IgG
<b>Application</b>	WB, ICC/IF, IHC-P, IP
<b>Reactivity</b>	Human, Mouse, Rat, Dog

Reference ( 13 )

★★★★★ Review ( 2 )

Package

100 µl, 25 µl

## APPLICATION

### Application Note

\*Optimal dilutions/concentrations should be determined by the researcher.

Suggested dilution	Recommended dilution
WB	1:500-1:3000
ICC/IF	1:100-1:1000
IHC-P	1:100-1:1000
IP	1:100-1:500

Not tested in other applications.

**Calculated MW** 26 kDa. ( [Note](#) )

## PROPERTIES

<b>Form</b>	Liquid
<b>Buffer</b>	PBS, 1% BSA, 20% Glycerol
<b>Preservative</b>	0.025% ProClin 300
<b>Storage</b>	Store as concentrated solution. Centrifuge briefly prior to opening vial. For short-term storage (1-2 weeks), store at 4°C. For long-term storage, aliquot and store at -20°C or below. Avoid multiple freeze-thaw cycles.
<b>Concentration</b>	0.45 mg/ml (Please refer to the vial label for the specific concentration.)
<b>Immunogen</b>	Recombinant protein encompassing a sequence within the center region of human Bcl-X. The exact sequence is proprietary.
<b>Purification</b>	Purified by antigen-affinity chromatography.
<b>Conjugation</b>	Unconjugated

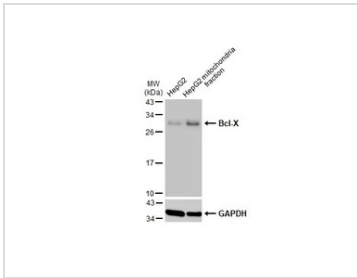
### Note

For laboratory research use only. Not for any clinical, therapeutic, or diagnostic use in humans or animals. Not for animal or human consumption.

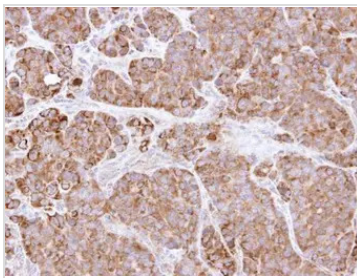
Purchasers shall not, and agree not to enable third parties to, analyze, copy, reverse engineer or otherwise attempt to determine the structure or sequence of the product.



For full product information, images and publications, please visit our [website](#).

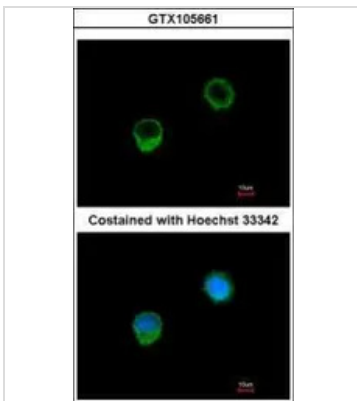
**DATA IMAGES**

**GTx105661 WB Image**

HepG2 and mitochondria extracts (30 µg) were separated by SDS-PAGE, and the membrane was blotted with Bcl-X antibody (GTx105661) diluted at 1:1000. The HRP-conjugated anti-rabbit IgG antibody (GTx213110-01) was used to detect the primary antibody.

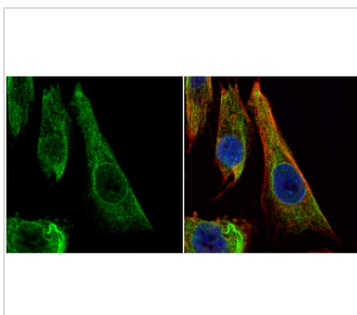

**GTx105661 IHC-P Image**

Immunohistochemical analysis of paraffin-embedded SW480 xenograft, using BCL2L1 (GTx105661) antibody at 1:500 dilution.

Antigen Retrieval: Trilogy™ (EDTA based, pH 8.0) buffer, 15min


**GTx105661 ICC/IF Image**

Immunofluorescence analysis of methanol-fixed A549, using BCL-x (GTx105661) antibody at 1:500 dilution.


**GTx105661 ICC/IF Image**

Bcl-X antibody detects Bcl-X protein at cytoplasm by immunofluorescent analysis.

Sample: SK-N-SH cells were fixed in 4% paraformaldehyde at RT for 15 min.

Green: Bcl-X protein stained by Bcl-X antibody (GTx105661) diluted at 1:200.

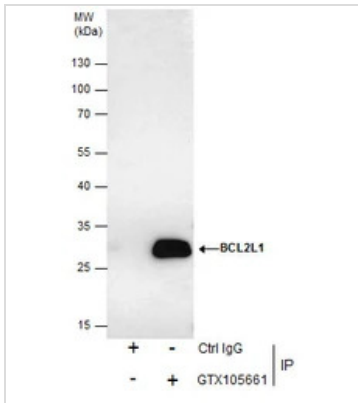
Red: alpha Tubulin, a cytoskeleton marker, stained by alpha Tubulin antibody [GT114] (GTx628802) diluted at 1:1000.

Blue: Hoechst 33342 staining.



For full product information, images and publications, please visit our [website](https://www.genetex.com).



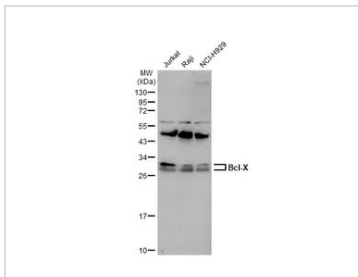


#### GTx105661 IP Image

Immunoprecipitation of Bcl-X protein from HCT-116 whole cell extracts using 5 µg of Bcl-X antibody (GTx105661).

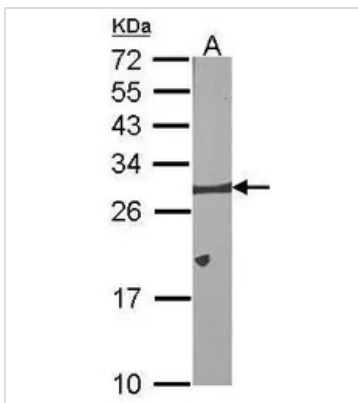
Western blot analysis was performed using Bcl-X antibody (GTx105661) diluted at 1:500.

EasyBlot anti-Rabbit IgG (GTx221666-01) was used as a secondary reagent.



#### GTx105661 WB Image

Various whole cell extracts (30 µg) were separated by 12% SDS-PAGE, and the membrane was blotted with Bcl-X antibody (GTx105661) diluted at 1:1000. The HRP-conjugated anti-rabbit IgG antibody (GTx213110-01) was used to detect the primary antibody.



#### GTx105661 WB Image

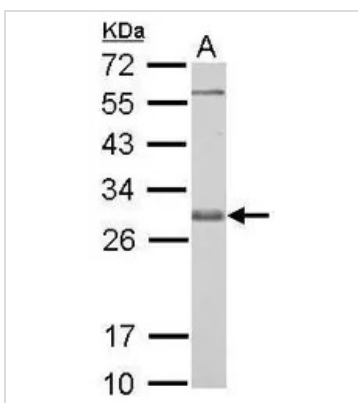
Sample (30 µg of whole cell lysate)

A: NIH-3T3

12% SDS PAGE

GTx105661 diluted at 1:1000

The HRP-conjugated anti-rabbit IgG antibody (GTx213110-01) was used to detect the primary antibody.



#### GTx105661 WB Image

Bcl-X antibody detects BCL2L1 protein by western blot analysis.

A. 30 µg PC-12 whole cell lysate/extract

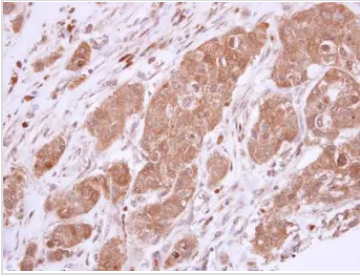
12% SDS-PAGE

Bcl-X antibody (GTx105661) dilution: 1:1000

The HRP-conjugated anti-rabbit IgG antibody (GTx213110-01) was used to detect the primary antibody.



For full product information, images and publications, please visit our [website](https://www.genetex.com).



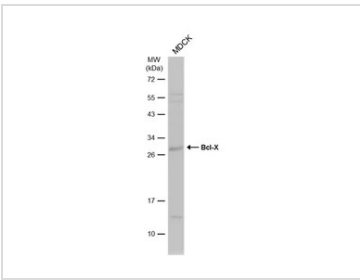
## GTX105661 IHC-P Image

Bcl-X antibody detects Bcl-X protein at cytoplasm in human breast carcinoma by immunohistochemical analysis.

Sample: Paraffin-embedded human breast carcinoma.

Bcl-X antibody (GTX105661) diluted at 1:500.

Antigen Retrieval: Trilogy™ (EDTA based, pH 8.0) buffer, 15min



## GTX105661 WB Image

Whole cell extract (30 µg) was separated by 12% SDS-PAGE, and the membrane was blotted with Bcl-X antibody (GTX105661) diluted at 1:1000. The HRP-conjugated anti-rabbit IgG antibody (GTX213110-01) was used to detect the primary antibody, and the signal was developed with Trident ECL plus-Enhanced.



For full product information, images and publications, please visit our [website](https://www.genetex.com).

## PUMA antibody [C2C3], C-term

Cat. No. GTX109675

Host	Rabbit
Clonality	Polyclonal
Isotype	IgG
Application	WB, IHC-P, IP
Reactivity	Human

Reference ( 5 )  
Package  
100 µl, 25 µl

## APPLICATION

## Application Note

\*Optimal dilutions/concentrations should be determined by the researcher.

Suggested dilution	Recommended dilution
WB	1:500-1:3000
IHC-P	1:100-1:1000
IP	1:100-1:500

Not tested in other applications.

## PROPERTIES

Form	Liquid
Buffer	0.1M Tris, 0.1M Glycine, 10% Glycerol
Preservative	0.01% Thimerosal
Storage	Store as concentrated solution. Centrifuge briefly prior to opening vial. For short-term storage (1-2 weeks), store at 4°C. For long-term storage, aliquot and store at -20°C or below. Avoid multiple freeze-thaw cycles.
Concentration	1 mg/ml (Please refer to the vial label for the specific concentration.)
Immunogen	Carrier-protein conjugated synthetic peptide encompassing a sequence within the C-terminus region of human PUMA. The exact sequence is proprietary.
Purification	Purified by antigen-affinity chromatography.
Conjugation	Unconjugated

## Note

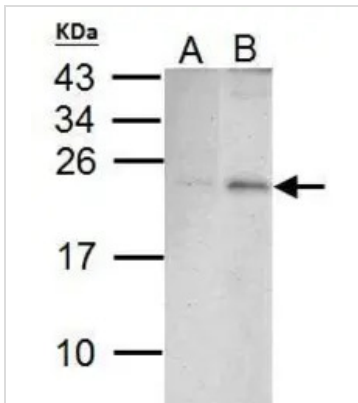
For laboratory research use only. Not for any clinical, therapeutic, or diagnostic use in humans or animals. Not for animal or human consumption.

Purchasers shall not, and agree not to enable third parties to, analyze, copy, reverse engineer or otherwise attempt to determine the structure or sequence of the product.



For full product information, images and publications, please visit our [website](#).

## DATA IMAGES



### GTx109675 WB Image

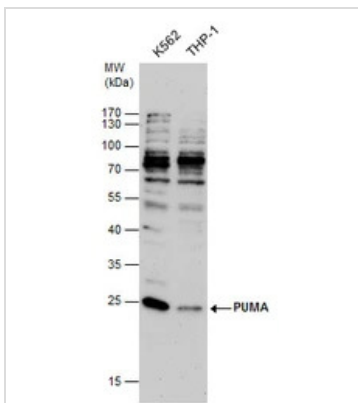
Sample (30 ug of whole cell lysate)

A: HCT116 cells with mock treatment for 0hr

B: HCT116 cells with 30uM cisplatin treatment for 24hr

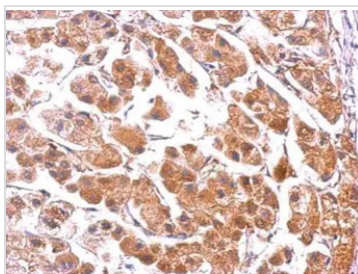
15% SDS PAGE

GTx109675 diluted at 1:1000



### GTx109675 WB Image

PUMA antibody detects PUMA protein by western blot analysis. Various whole cell extracts (30 µg) were separated by 12 % SDS-PAGE, and blotted with PUMA antibody (GTx109675) diluted by 1:500



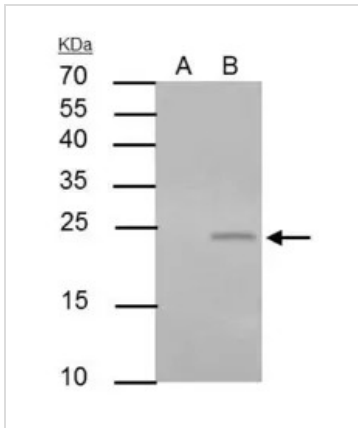
### GTx109675 IHC-P Image

Immunohistochemical analysis of paraffin-embedded human hepatoma, using PUMA(GTx109675) antibody at 1:500 dilution.

Antigen Retrieval: Trilogy™ (EDTA based, pH 8.0) buffer, 15min



For full product information, images and publications, please visit our [website](https://www.genetex.com).



## GTX109675 IP Image

PUMA antibody [C2C3], C-term immunoprecipitates BCL2 binding component 3 protein in IP experiments.

IP samples: HCT-116 whole cell extract treat with 30uM cisplatin for 24 hr

A. Control with 4 µg of preimmune Rabbit IgG

B. Immunoprecipitation of BCL2 binding component 3 protein by 4 µg PUMA antibody [C2C3], C-term (GTX109675)

15 % SDS-PAGE

The immunoprecipitated BCL2 binding component 3 protein was detected by PUMA antibody [C2C3], C-term (GTX109675) diluted at 1:500.

[EasyBlot anti-rabbit IgG (GTX221666-01) was used as a secondary reagent]



For full product information, images and publications, please visit our [website](https://www.genetex.com).

## Bax antibody [N1N2], N-term

Cat. No. GTX109683

Host	Rabbit
Clonality	Polyclonal
Isotype	IgG
Application	WB, ICC/IF, IHC-P, IHC-Fr, IP
Reactivity	Human, Mouse, Rat

Reference ( 80 )

★★★★★ Review ( 8 )

Package

100 µl, 25 µl

## APPLICATION

## Application Note

\*Optimal dilutions/concentrations should be determined by the researcher.

Suggested dilution	Recommended dilution
WB	1:500-1:3000
ICC/IF	1:100-1:1000
IHC-P	1:100-1:1000
IHC-Fr	Assay dependent
IP	1:100-1:500

Not tested in other applications.

Calculated MW 21 kDa. ( [Note](#) )

## PROPERTIES

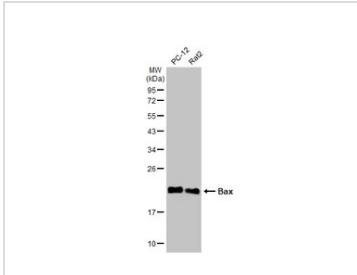
Form	Liquid
Buffer	PBS, 20% Glycerol
Preservative	0.025% ProClin 300
Storage	Store as concentrated solution. Centrifuge briefly prior to opening vial. For short-term storage (1-2 weeks), store at 4°C. For long-term storage, aliquot and store at -20°C or below. Avoid multiple freeze-thaw cycles.
Concentration	1.25 mg/ml (Please refer to the vial label for the specific concentration.)
Immunogen	Carrier-protein conjugated synthetic peptide encompassing a sequence within the N-terminus region of human Bax. The exact sequence is proprietary.
Purification	Purified by antigen-affinity chromatography.
Conjugation	Unconjugated

For full product information, images and publications, please visit our [website](#).

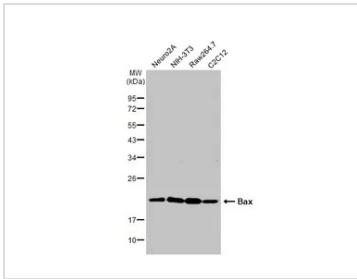
For laboratory research use only. Not for any clinical, therapeutic, or diagnostic use in humans or animals. Not for animal or human consumption.

**Note**

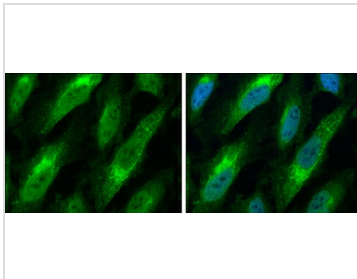
Purchasers shall not, and agree not to enable third parties to, analyze, copy, reverse engineer or otherwise attempt to determine the structure or sequence of the product.

**DATA IMAGES**

**GTX109683 WB Image**

Various whole cell extracts (30 µg) were separated by 12% SDS-PAGE, and the membrane was blotted with Bax antibody [N1N2], N-term (GTX109683) diluted at 1:1000. The HRP-conjugated anti-rabbit IgG antibody (GTX213110-01) was used to detect the primary antibody.


**GTX109683 WB Image**

Various whole cell extracts (30 µg) were separated by 12% SDS-PAGE, and the membrane was blotted with Bax antibody [N1N2], N-term (GTX109683) diluted at 1:1000. The HRP-conjugated anti-rabbit IgG antibody (GTX213110-01) was used to detect the primary antibody.

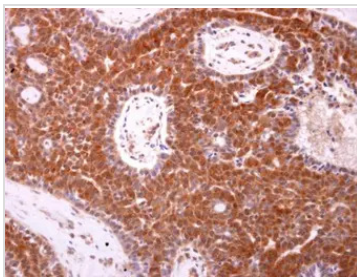

**GTX109683 ICC/IF Image**

Bax antibody [N1N2], N-term detects Bax protein at cytoplasm, nucleus and mitochondria by immunofluorescent analysis.

Sample: HeLa cells were fixed in 4% paraformaldehyde at RT for 15 min.

Green: Bax protein stained by Bax antibody [N1N2], N-term (GTX109683) diluted at 1:400.

Blue: Hoechst 33342 staining.


**GTX109683 IHC-P Image**

Bax antibody [N1N2], N-term detects Bax protein at cytoplasm on human lung carcinoma by immunohistochemical analysis.

Sample: Paraffin-embedded human lung carcinoma.

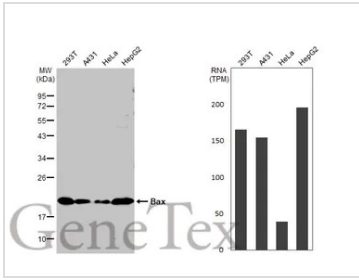
Bax antibody [N1N2], N-term (GTX109683) diluted at 1:500.

Antigen Retrieval: Trilogy™ (EDTA based, pH 8.0) buffer, 15min



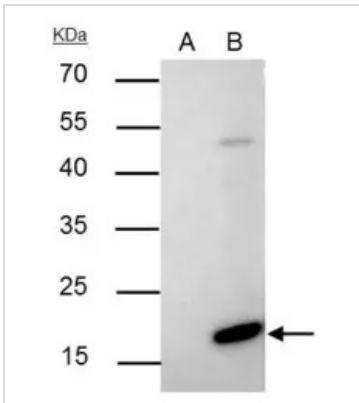
For full product information, images and publications, please visit our [website](https://www.genetex.com).





#### GTx109683 WB Image

Various whole cell extracts (30 µg) were separated by 12% SDS-PAGE, and the membrane was blotted with Bax antibody [N1N2], N-term (GTx109683) diluted at 1:1000. The HRP-conjugated anti-rabbit IgG antibody (GTx213110-01) was used to detect the primary antibody. Corresponding RNA expression data for the same cell lines are based on Human Protein Atlas program.



#### GTx109683 IP Image

Bax antibody [N1N2], N-term immunoprecipitates BCL2-associated X protein in IP experiments.

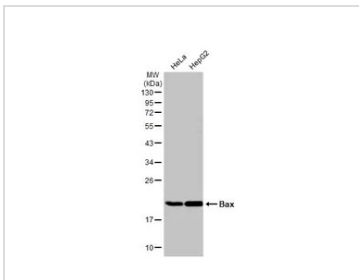
IP samples: MCF-7 whole cell extract

A. Control with 4 µg of preimmune Rabbit IgG

B. Immunoprecipitation of BCL2-associated X protein by 4 µg Bax antibody [N1N2], N-term (GTx109683)  
15 % SDS-PAGE

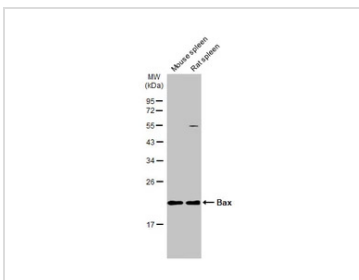
The immunoprecipitated BCL2-associated X protein was detected by Bax antibody [N1N2], N-term (GTx109683) diluted at 1:500.

[EasyBlot anti-rabbit IgG (GTx221666-01) was used as a secondary reagent]



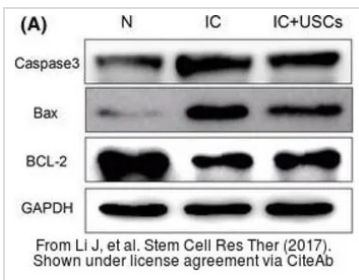
#### GTx109683 WB Image

Various whole cell extracts (30 µg) were separated by 12% SDS-PAGE, and the membrane was blotted with Bax antibody [N1N2], N-term (GTx109683) diluted at 1:1000. The HRP-conjugated anti-rabbit IgG antibody (GTx213110-01) was used to detect the primary antibody.



#### GTx109683 WB Image

Various tissue extracts (50 µg) were separated by 12% SDS-PAGE, and the membrane was blotted with Bax antibody [N1N2], N-term (GTx109683) diluted at 1:1000. The HRP-conjugated anti-rabbit IgG antibody (GTx213110-01) was used to detect the primary antibody.

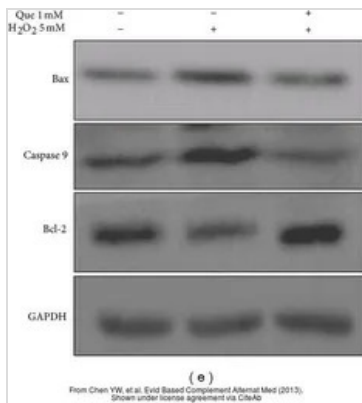


#### GTx109683 WB Image

The data was published in the journal Stem Cell Res Ther in 2017. [PMID: 28482861](https://pubmed.ncbi.nlm.nih.gov/28482861/)

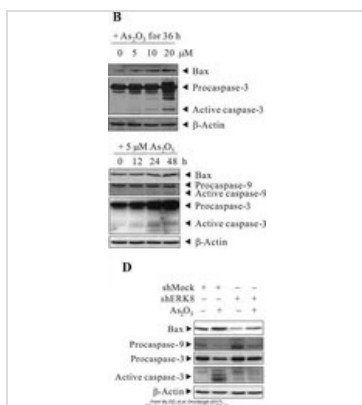


For full product information, images and publications, please visit our [website](https://www.genetex.com).



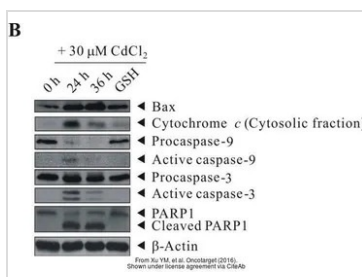
#### GTXT109683 WB Image

The data was published in the journal Evid Based Complement Alternat Med in 2013. [PMID: 23573126](#)



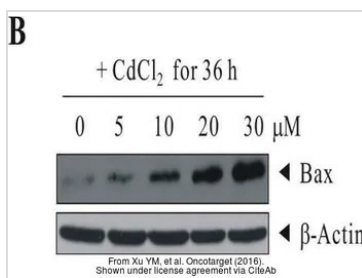
#### GTXT109683 WB Image

The data was published in the journal Oncotarget in 2017. [PMID: 28467781](#)



#### GTXT109683 WB Image

The data was published in the journal Oncotarget in 2016. [PMID: 26716417](#)

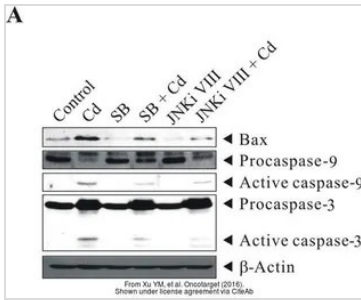


#### GTXT109683 WB Image

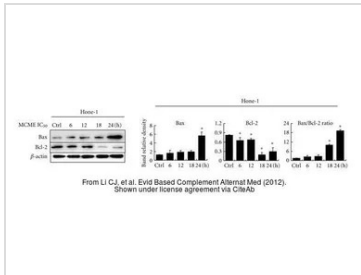
The data was published in the journal Oncotarget in 2016. [PMID: 26716417](#)



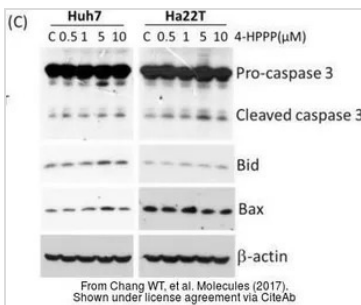
For full product information, images and publications, please visit our [website](#).


**GTx109683 WB Image**

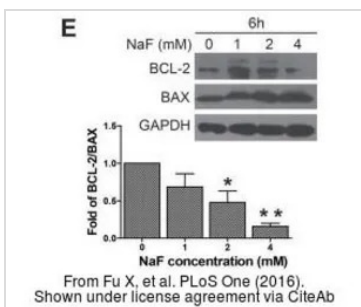
The data was published in the journal Oncotarget in 2016. [PMID: 26716417](#)


**GTx109683 WB Image**

The data was published in the journal Evid Based Complement Alternat Med in 2012. [PMID: 23091557](#)


**GTx109683 WB Image**

The data was published in the journal Molecules in 2017. [PMID: 28531143](#)


**GTx109683 WB Image**

The data was published in the journal PLoS One in 2016. [PMID: 26859149](#)



For full product information, images and publications, please visit our [website](#).

## Bad antibody

**Cat. No. GTX130108**

<b>Host</b>	Rabbit
<b>Clonality</b>	Polyclonal
<b>Isotype</b>	IgG
<b>Application</b>	WB, IHC-P
<b>Reactivity</b>	Human

Reference ( 8 )

★★★★★ Review ( 1 )

Package

100 µl, 25 µl

### APPLICATION

#### Application Note

\*Optimal dilutions/concentrations should be determined by the researcher.

Suggested dilution	Recommended dilution
WB	1:500-1:3000
IHC-P	Assay dependent

Not tested in other applications.

**Calculated MW** 18 kDa. ( [Note](#) )

### PROPERTIES

<b>Form</b>	Liquid
<b>Buffer</b>	PBS, 20% Glycerol
<b>Preservative</b>	0.025% ProClin 300
<b>Storage</b>	Store as concentrated solution. Centrifuge briefly prior to opening vial. For short-term storage (1-2 weeks), store at 4°C. For long-term storage, aliquot and store at -20°C or below. Avoid multiple freeze-thaw cycles.
<b>Concentration</b>	1.36 mg/ml (Please refer to the vial label for the specific concentration.)
<b>Immunogen</b>	Recombinant protein encompassing a sequence within the center region of human Bad. The exact sequence is proprietary.
<b>Purification</b>	Purified by antigen-affinity chromatography.
<b>Conjugation</b>	Unconjugated

#### Note

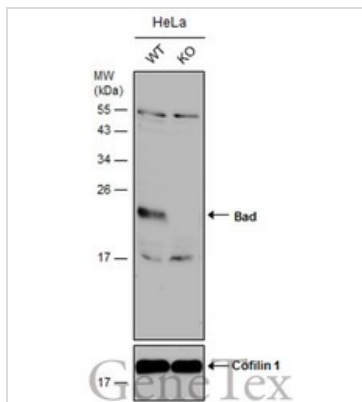
For laboratory research use only. Not for any clinical, therapeutic, or diagnostic use in humans or animals. Not for animal or human consumption.

Purchasers shall not, and agree not to enable third parties to, analyze, copy, reverse engineer or otherwise attempt to determine the structure or sequence of the product.



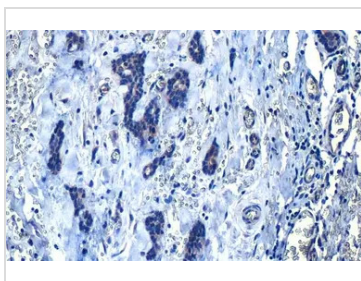
For full product information, images and publications, please visit our [website](#).

## DATA IMAGES



### GTX130108 WB Image

Wild-type (WT) and Bad knockout (KO) HeLa cell extracts (30 µg) were separated by 15% SDS-PAGE, and the membrane was blotted with Bad antibody (GTX130108) diluted at 1:1000. The HRP-conjugated anti-rabbit IgG antibody (GTX213110-01) was used to detect the primary antibody, and the signal was developed with Trident ECL plus-Enhanced.



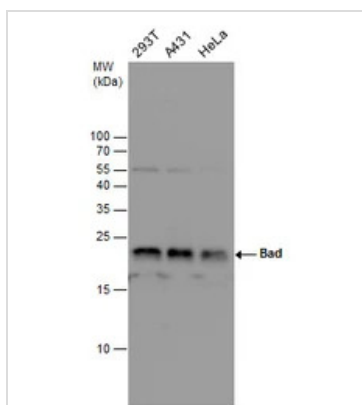
### GTX130108 IHC-P Image

Bad antibody detects Bad protein at cytoplasm by immunohistochemical analysis.

Sample: Paraffin-embedded human breast carcinoma.

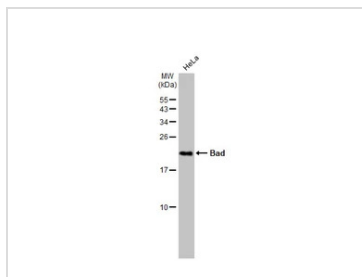
Bad stained by Bad antibody (GTX130108) diluted at 1:500.

Antigen Retrieval: Citrate buffer, pH 6.0, 15 min



### GTX130108 WB Image

Bad antibody detects Bad protein by western blot analysis. Various whole cell extracts (30 µg) were separated by 15% SDS-PAGE, and the membrane was blotted with Bad antibody (GTX130108) diluted at a dilution of 1:1000.

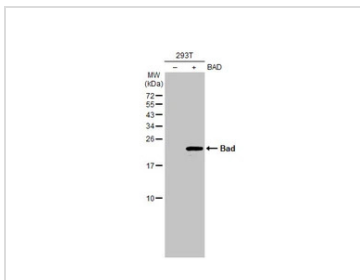


### GTX130108 WB Image

Whole cell extract (30 µg) was separated by 15% SDS-PAGE, and the membrane was blotted with Bad antibody (GTX130108) diluted at 1:1000. The HRP-conjugated anti-rabbit IgG antibody (GTX213110-01) was used to detect the primary antibody.



For full product information, images and publications, please visit our [website](https://www.genetex.com).



## GTx130108 WB Image

Non-transfected (–) and transfected (+) 293T whole cell extracts (30 µg) were separated by 15% SDS-PAGE, and the membrane was blotted with Bad antibody (GTx130108) diluted at 1:1000. The HRP-conjugated anti-rabbit IgG antibody (GTx213110-01) was used to detect the primary antibody.



For full product information, images and publications, please visit our [website](#).

## Goat Anti-Rabbit IgG antibody (HRP)

Cat. No. GTX213110-01

Host	Goat
Clonality	Polyclonal
Isotype	IgG
Application	WB, IHC-P, ELISA
Reactivity	Rabbit

Reference ( 496 )

Package

1 ml

## APPLICATION

## Application Note

\*Optimal dilutions/concentrations should be determined by the researcher.

Suggested dilution	Recommended dilution
WB	Assay dependent
IHC-P	1:100-1:1000
ELISA	Assay dependent

Not tested in other applications.

## PROPERTIES

Form	Liquid
Buffer	0.05M Tris, 0.15M NaCl, 1%BSA
Preservative	0.025% ProClin 300
Storage	Store as concentrated solution. Centrifuge briefly prior to opening vial. For short-term storage (1-2 weeks), store at 4°C. For long-term storage, aliquot and store at -20°C or below. Avoid multiple freeze-thaw cycles.
Concentration	0.5 mg/ml (Please refer to the vial label for the specific concentration.)
Immunogen	Highly purified whole rabbit IgG
Purification	Purified by antigen-affinity chromatography.
Conjugation	Horseradish peroxidase(HRP)

## Note

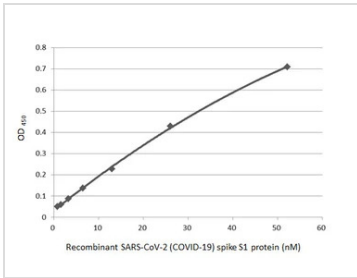
For laboratory research use only. Not for any clinical, therapeutic, or diagnostic use in humans or animals. Not for animal or human consumption.

Purchasers shall not, and agree not to enable third parties to, analyze, copy, reverse engineer or otherwise attempt to determine the structure or sequence of the product.

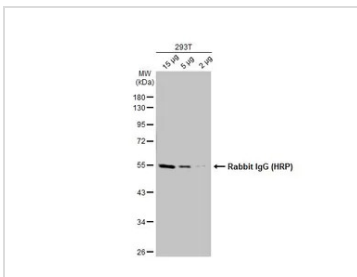


For full product information, images and publications, please visit our [website](#).

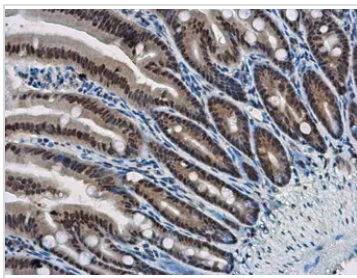


**DATA IMAGES**

**GTx213110-01 ELISA Image**

Indirect ELISA analysis performed by coating plate with recombinant SARS-CoV-2 (COVID-19) Spike S1 protein, His tag (active) (GTx135817-pro) (52.15-0.81 nM). Coated protein was probed with SARS-CoV-2 (COVID-19) Spike S1 antibody [HL134] (GTx635671) (1 µg/mL). Goat anti-rabbit IgG antibody (HRP) (GTx213110-01) (1:10000) was used to detect bound primary antibody.


**GTx213110-01 WB Image**

Various whole cell extracts were separated by 10% SDS-PAGE, and the membrane was blotted with Rabbit IgG antibody (HRP) (GTx213110-01) diluted at 1:10000.


**GTx213110-01 IHC-P Image**

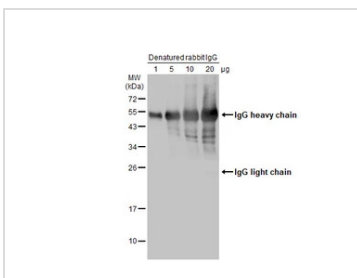
WBP11 antibody detects WBP11 protein at nucleus in mouse intestine by immunohistochemical analysis.

Sample: Paraffin-embedded mouse intestine.

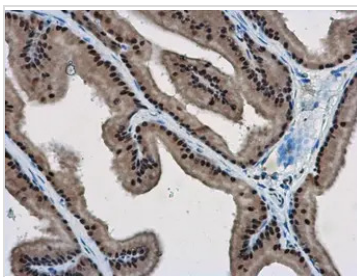
WBP11 antibody (GTx118654) diluted at 1:500.

The signal was developed by Rabbit IgG antibody (HRP) (GTx213110-01)

Antigen Retrieval: Citrate buffer, pH 6.0, 15 min


**GTx213110-01 WB Image**

Various amounts of denatured rabbit IgG protein were separated by 12% SDS-PAGE, and the membrane was blotted with HRP-conjugated anti-rabbit IgG antibody (GTx213110-01) diluted at 1:5000.


**GTx213110-01 IHC-P Image**

WBP11 antibody detects WBP11 protein at nucleus in rat prostate by immunohistochemical analysis.

Sample: Paraffin-embedded rat prostate.

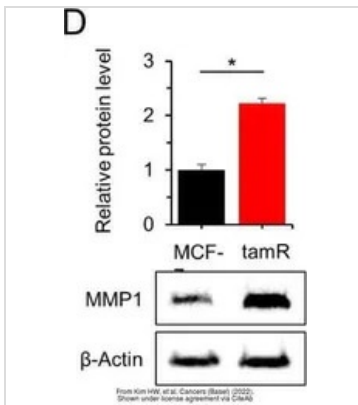
WBP11 antibody (GTx118654) diluted at 1:500.

The signal was developed by Rabbit IgG antibody (HRP) (GTx213110-01).

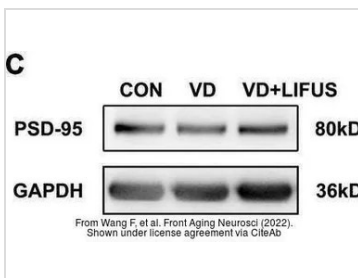
Antigen Retrieval: Citrate buffer, pH 6.0, 15 min



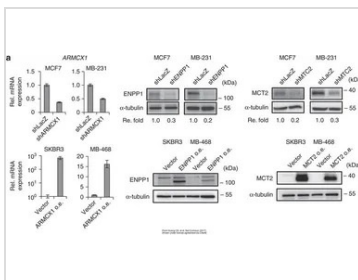
For full product information, images and publications, please visit our [website](https://www.genetex.com).


**GTX213110-01 WB Image**

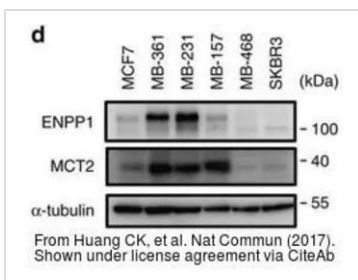
The data was published in the 2022 in Cancers (Basel). [PMID: 35267540](#)


**GTX213110-01 WB Image**

The data was published in the 2022 in Front Aging Neurosci. [PMID: 35264943](#)


**GTX213110-01 WB Image**

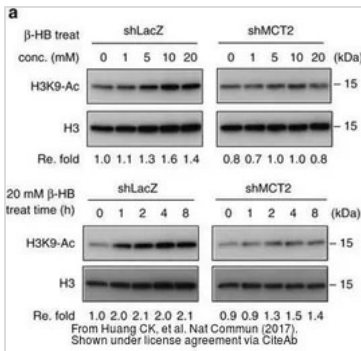
The data was published in the 2017 in Nat Commun. [PMID: 28281525](#)


**GTX213110-01 WB Image**

The data was published in the 2017 in Nat Commun. [PMID: 28281525](#)

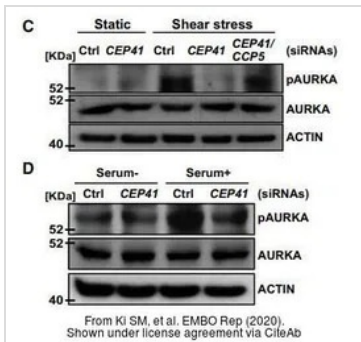


For full product information, images and publications, please visit our [website](#).



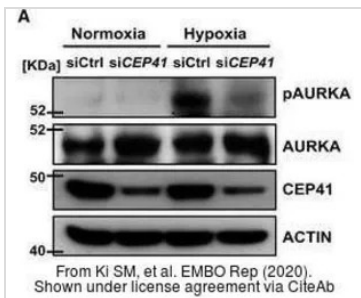
#### GTx213110-01 WB Image

The data was published in the 2017 in Nat Commun. [PMID: 28281525](#)



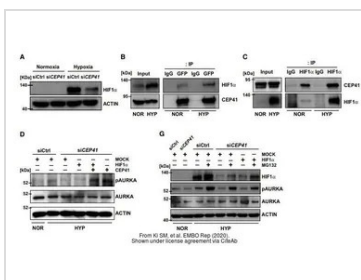
#### GTx213110-01 WB Image

The data was published in the journal EMBO Rep in 2020. [PMID: 31885126](#)



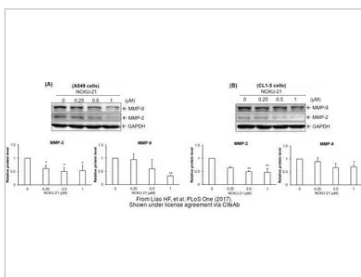
#### GTx213110-01 WB Image

The data was published in the journal EMBO Rep in 2020. [PMID: 31885126](#)



#### GTx213110-01 WB Image

The data was published in the journal EMBO Rep in 2020. [PMID: 31885126](#)

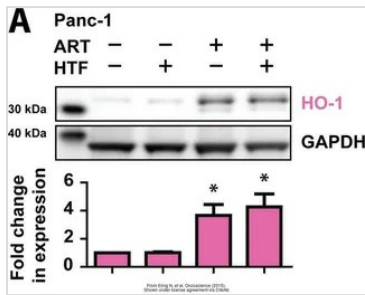


#### GTx213110-01 WB Image

The data was published in the journal PLoS One in 2017. [PMID: 28945763](#)

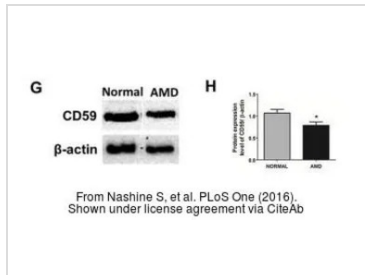


For full product information, images and publications, please visit our [website](#).



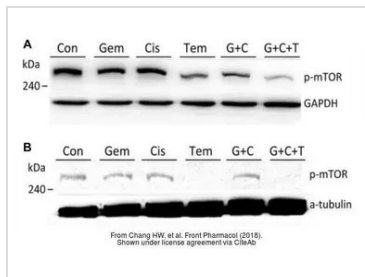
#### GTx213110-01 WB Image

The data was published in the journal Oncoscience in 2015. [PMID: 26097885](#)



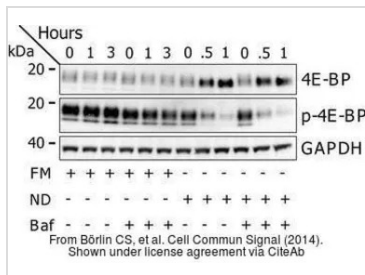
#### GTx213110-01 WB Image

The data was published in the 2016 in PLoS One. [PMID: 27486856](#)



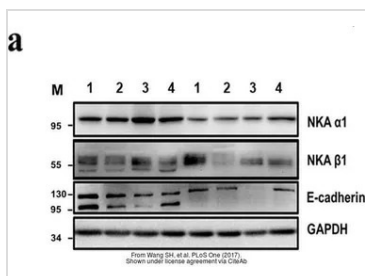
#### GTx213110-01 WB Image

The data was published in the journal Front Pharmacol in 2018. [PMID: 30087612](#)



#### GTx213110-01 WB Image

The data was published in the journal Cell Commun Signal in 2014. [PMID: 25214434](#)



#### GTx213110-01 WB Image

The data was published in the journal PLoS One in 2017. [PMID: 28832634](#)



For full product information, images and publications, please visit our [website](#).