

GTX300027

Induced Pluripotent Stem Cells (iPSC) Antibody Panel _1

Product Content

| Cat No | Product Name | Reactivity | Applications | Package |
|--------------|-------------------------------------|-----------------------------------|--|---------|
| GTX100622 | Oct4 antibody | Human, Mouse | WB, ICC/IF, FCM, IP | 25 µl |
| GTX100863 | Nanog antibody [N3C3] | Human, Mouse, Ceratotherium simum | WB, ICC/IF, IHC-P, IHC-Fr, IP, ELISA, Sandwich ELISA | 25 µl |
| GTX109636 | c-Myc antibody [N1], N-term | Human | WB | 25 µl |
| GTX121923 | Lin28A antibody | Human, Mouse, Pig | WB, ICC/IF, IHC-P, FCM | 25 µl |
| GTX213110-01 | Goat Anti-Rabbit IgG antibody (HRP) | Rabbit | WB, IHC-P, ELISA | 25 µl |
| GTX636505 | SOX2 antibody [HL1193] | Human, Mouse, Rat, Cat | WB, ICC/IF, IHC-P, IP | 25 µl |

Note

For In vitro laboratory use only. Not for any clinical, therapeutic, or diagnostic use in humans or animals. Not for animal or human consumption.



For full product information, images and publications, please visit our [website](#).

Oct4 antibody

Cat. No. GTX100622

| | |
|---------------------|---------------------|
| Host | Rabbit |
| Clonality | Polyclonal |
| Isotype | IgG |
| Applications | WB, ICC/IF, FCM, IP |
| Reactivity | Human, Mouse |

References (4)

Package

100 µl, 25 µl

Applications

Application Note

*Optimal dilutions/concentrations should be determined by the researcher.

| Suggested dilution | Recommended dilution |
|--------------------|----------------------|
| WB | 1:1000-1:20000 |
| ICC/IF | 1:100-1:1000 |
| FCM | 1:50-1:200 |
| IP | 1:500-1:1000 |

Not tested in other applications.

Calculated MW 39 kDa. ([Note](#))

Properties

| | |
|----------------------|--|
| Form | Liquid |
| Buffer | PBS, 1% BSA, 20% Glycerol |
| Preservative | 0.025% ProClin 300 |
| Storage | Store as concentrated solution. Centrifuge briefly prior to opening vial. For short-term storage (1-2 weeks), store at 4°C. For long-term storage, aliquot and store at -20°C or below. Avoid multiple freeze-thaw cycles. |
| Concentration | 0.32 mg/ml (Please refer to the vial label for the specific concentration.) |
| Immunogen | Recombinant protein encompassing a sequence within the center region of human Oct4. The exact sequence is proprietary. |
| Purification | Purified by antigen-affinity chromatography. |
| Conjugation | Unconjugated |

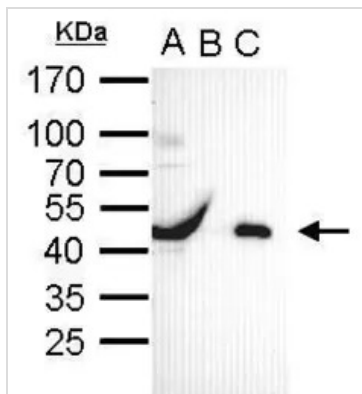
Note

For laboratory research use only. Not for any clinical, therapeutic, or diagnostic use in humans or animals. Not for animal or human consumption.

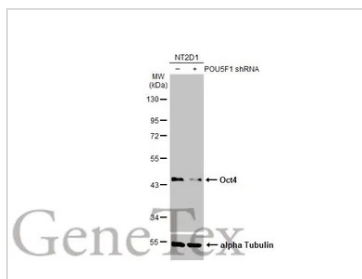
Purchasers shall not, and agree not to enable third parties to, analyze, copy, reverse engineer or otherwise attempt to determine the structure or sequence of the product.



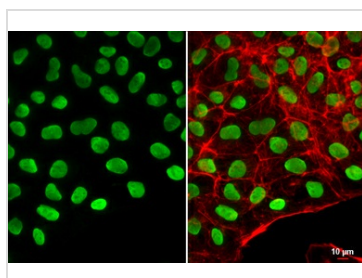
For full product information, images and publications, please visit our [website](#).

DATA IMAGES

GTX100622 IP Image

Oct4 antibody immunoprecipitates Oct4 protein in IP experiments. IP Sample: cell lysate/extract of Oct4 gene transfected 293T cells A. Cell lysate/extract of transfected 293T cell B. Control with 2 µg of preimmune rabbit IgG C. Immunoprecipitation of Oct4 by 2 µg of Oct4 antibody (GTX100622) 12% SDS-PAGE The immunoprecipitated Oct4 protein was detected by Oct4 antibody (GTX100622) diluted at 1:1000. EasyBlot anti-rabbit IgG (GTX221666-01) was used as a secondary reagent.


GTX100622 WB Image

Non-transfected (–) and transfected (+) NT2D1 whole cell extracts (30 µg) were separated by 10% SDS-PAGE, and the membrane was blotted with Oct4 antibody (GTX100622) diluted at 1:10000. The HRP-conjugated anti-rabbit IgG antibody (GTX213110-01) was used to detect the primary antibody.


GTX100622 ICC/IF Image

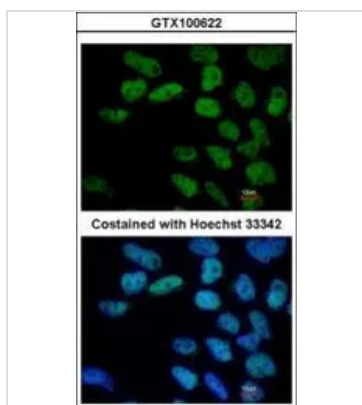
Oct4 antibody detects Oct4 protein at nucleus by immunofluorescent analysis.

Sample: NT2D1 cells were fixed in 4% paraformaldehyde at RT for 15 min.

Green: Oct4 stained by Oct4 antibody (GTX100622) diluted at 1:500.

Red: phalloidin, a cytoskeleton marker, diluted at 1:200.

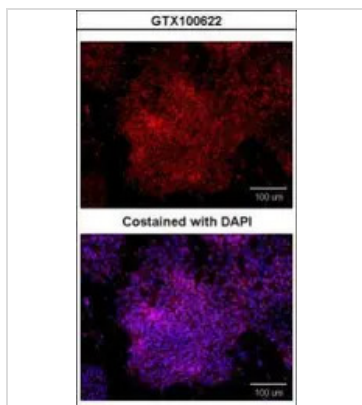
Scale bar= 10 µm.


GTX100622 ICC/IF Image

Immunofluorescence analysis of paraformaldehyde-fixed Human ESC, using Oct4(GTX100622) antibody at 1:400 dilution.

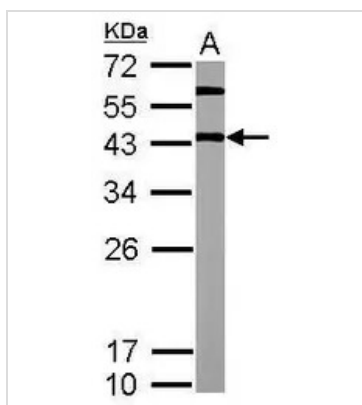


For full product information, images and publications, please visit our [website](http://www.genetex.com).



GTX100622 ICC/IF Image

Immunofluorescence analysis of paraformaldehyde-fixed human embryonic stem cell, using Oct4(GTX100622) antibody at 1:100 dilution.



GTX100622 WB Image

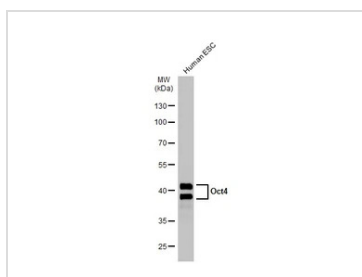
Sample (20 μg of whole cell lysate)

A: mouse ESC

12% SDS PAGE

GTX100622 diluted at 1:5000

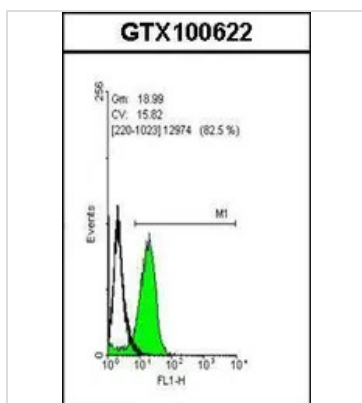
The HRP-conjugated anti-rabbit IgG antibody (GTX213110-01) was used to detect the primary antibody.



GTX100622 WB Image

Human tissue extract (30 μg) was separated by 10% SDS-PAGE, and the membrane was blotted with Oct4 antibody (GTX100622) diluted at 1:5000. The HRP-conjugated anti-rabbit IgG antibody (GTX213110-01) was used to detect the primary antibody.

The observed M.W. is based on the publication: PMID: 23642364

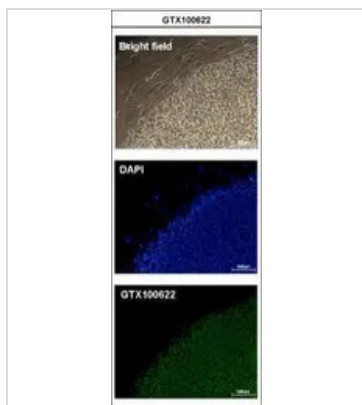


GTX100622 FCM Image

Flow cytometry on human embryonic stem cells, staining with Oct4 (GTX100622) antibody at 1:50 dilution(green) or rabbit IgG (black).



For full product information, images and publications, please visit our [website](https://www.genetex.com).



GTX100622 ICC/IF Image

Immunofluorescence analysis of paraformaldehyde-fixed human embryonic stem cell, using Oct4(GTX100622) antibody at 1:200 dilution.



For full product information, images and publications, please visit our [website](#).

Nanog antibody [N3C3]

Cat. No. GTX100863

| | |
|--------------|--|
| Host | Rabbit |
| Clonality | Polyclonal |
| Isotype | IgG |
| Applications | WB, ICC/IF, IHC-P, IHC-Fr, IP, ELISA, Sandwich ELISA |
| Reactivity | Human, Mouse, Ceratotherium simum |

References (47)

★★★★★ Review (1)

Package

100 µl, 25 µl

Applications

Application Note

*Optimal dilutions/concentrations should be determined by the researcher.

| Suggested dilution | Recommended dilution |
|--------------------|----------------------|
| WB | 1:500-1:3000 |
| ICC/IF | 1:100-1:1000 |
| IHC-P | Assay dependent |
| IHC-Fr | Assay dependent |
| IP | 1:100-1:500 |
| ELISA | 1:1000-1:10000 |
| Sandwich ELISA | Assay dependent |

Note : Capture: GTX100863 , Detection: GTX89079

Not tested in other applications.

Calculated MW 35 kDa. ([Note](#))

Properties

| | |
|---------------|--|
| Form | Liquid |
| Buffer | PBS, 1% BSA, 20% Glycerol |
| Preservative | 0.01% Thimerosal |
| Storage | Store as concentrated solution. Centrifuge briefly prior to opening vial. For short-term storage (1-2 weeks), store at 4°C. For long-term storage, aliquot and store at -20°C or below. Avoid multiple freeze-thaw cycles. |
| Concentration | 0.5 mg/ml (Please refer to the vial label for the specific concentration.) |
| Immunogen | Recombinant protein encompassing a sequence within the center region of human NANOG. The exact sequence is proprietary. |
| Purification | Purified by antigen-affinity chromatography. |

For full product information, images and publications, please visit our [website](#).

Date 2026 / 02 / 10 Page 6 of 24

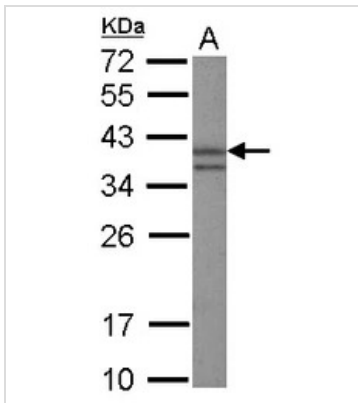
Conjugation

Unconjugated

Note

For laboratory research use only. Not for any clinical, therapeutic, or diagnostic use in humans or animals. Not for animal or human consumption.

Purchasers shall not, and agree not to enable third parties to, analyze, copy, reverse engineer or otherwise attempt to determine the structure or sequence of the product.

DATA IMAGES

GTX100863 WB Image

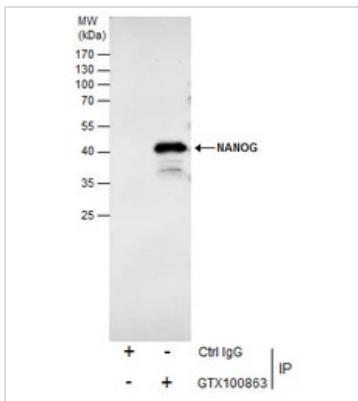
Sample (30 µg of whole cell lysate)

A: HeLa nucleus

12% SDS PAGE

GTX100863 diluted at 1:3000

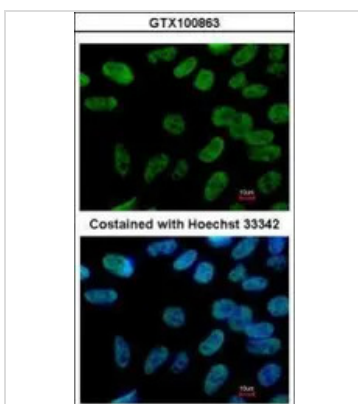
The HRP-conjugated anti-rabbit IgG antibody (GTX213110-01) was used to detect the primary antibody.


GTX100863 IP Image

Immunoprecipitation of NANOG protein from NT2D1 whole cell extracts using 5 µg of NANOG antibody [N3C3] (GTX100863).

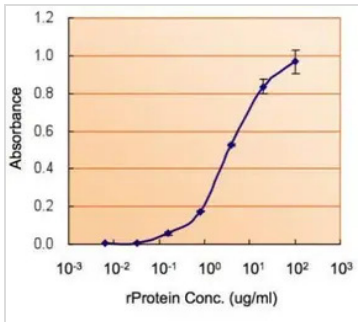
Western blot analysis was performed using NANOG antibody [N3C3] (GTX100863) diluted at 1:500.

EasyBlot anti-Rabbit IgG (GTX221666-01) was used as a secondary reagent.


GTX100863 ICC/IF Image

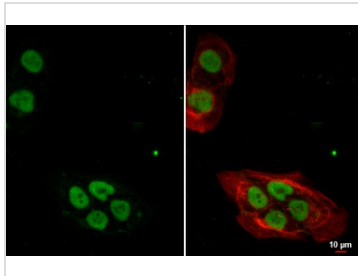
Immunofluorescence analysis of paraformaldehyde-fixed Human ESC, using NANOG(GTX100863) antibody at 1:400 dilution.


 For full product information, images and publications, please visit our [website](https://www.genetex.com).



GTX100863 ELISA Image

ELISA detection of NANOG using GTX100863 for capture at a concentration of 5 µg/mL and GTX89079 for detection at a concentration of 5 µg/mL.



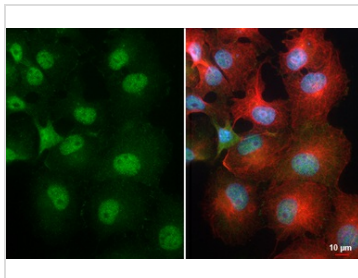
GTX100863 ICC/IF Image

Nanog antibody [N3C3] detects Nanog protein at nucleus by immunofluorescent analysis.

Sample: NT2D1 cells were fixed in 2% paraformaldehyde at RT for 15 min.

Green: Nanog stained by Nanog antibody [N3C3] (GTX100863) diluted at 1:500.

Red: alpha Tubulin, a cytoskeleton marker, stained by alpha Tubulin antibody [GT114] (GTX628802) diluted at 1:1000.



GTX100863 ICC/IF Image

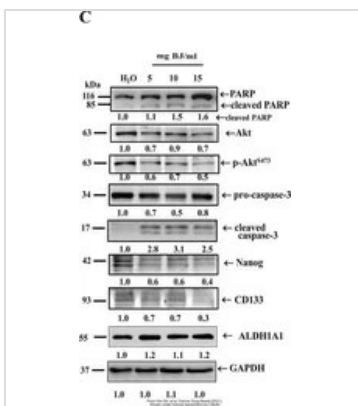
Nanog antibody [N3C3] detects Nanog protein by immunofluorescent analysis.

Sample: PANC-1 cells were fixed in 4% paraformaldehyde at RT for 15 min.

Green: Nanog stained by Nanog antibody [N3C3] (GTX100863) diluted at 1:500.

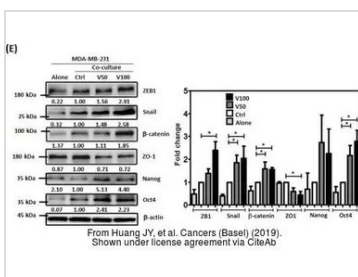
Red: alpha Tubulin, a cytoskeleton marker, stained by alpha Tubulin antibody [GT114] (GTX628802) diluted at 1:1000.

Blue: Fluoroshield with DAPI (GTX30920).



GTX100863 WB Image

The data was published in the 2021 in Cancer Drug Resist. [PMID: 35582384](https://pubmed.ncbi.nlm.nih.gov/35582384/)

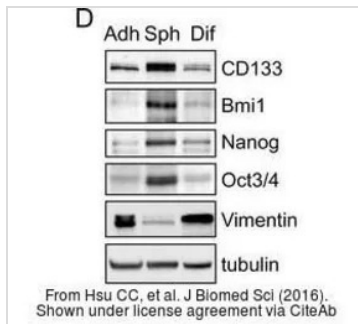


GTX100863 WB Image

The data was published in the 2019 in Cancers (Basel). [PMID: 31861872](https://pubmed.ncbi.nlm.nih.gov/31861872/)

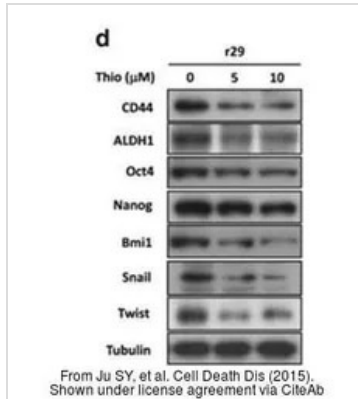


For full product information, images and publications, please visit our [website](https://www.genetex.com).



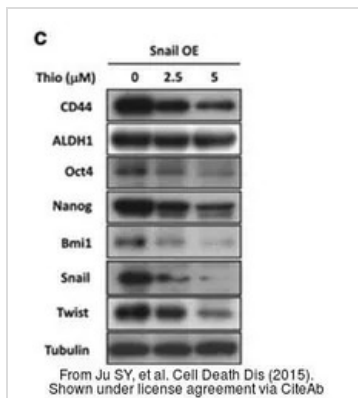
GTX100863 WB Image

The data was published in the journal J Biomed Sci in 2016. [PMID: 27863490](#)



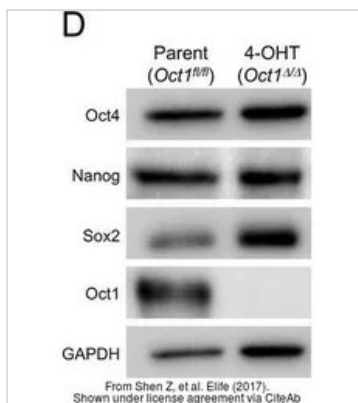
GTX100863 WB Image

The data was published in the journal Cell Death Dis in 2015. [PMID: 26136074](#)



GTX100863 WB Image

The data was published in the journal Cell Death Dis in 2015. [PMID: 26136074](#)

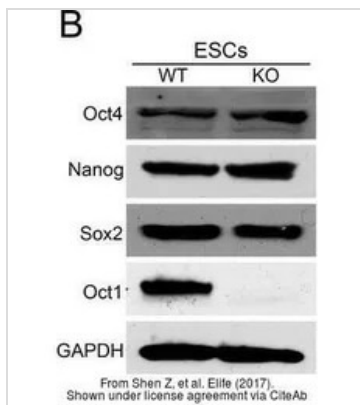


GTX100863 WB Image

The data was published in the journal Elife in 2017. [PMID: 28537559](#)

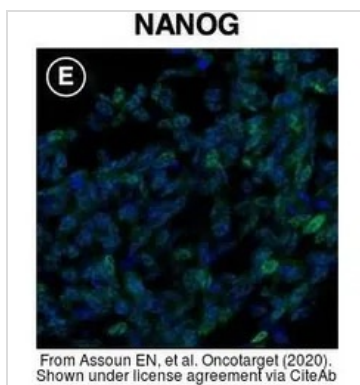


For full product information, images and publications, please visit our [website](#).



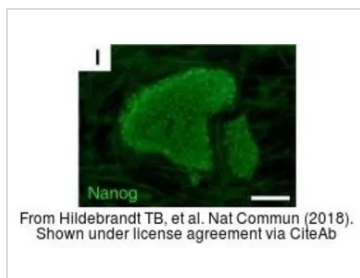
GTx100863 WB Image

The data was published in the journal Elife in 2017. [PMID: 28537559](https://pubmed.ncbi.nlm.nih.gov/28537559/)



GTx100863 ICC/IF Image

The data was published in the journal Oncotarget in 2020. [PMID: 32256979](https://pubmed.ncbi.nlm.nih.gov/32256979/)



GTx100863 ICC/IF Image

The data was published in the journal Nat Commun in 2018. [PMID: 29973581](https://pubmed.ncbi.nlm.nih.gov/29973581/)



For full product information, images and publications, please visit our [website](https://www.genetex.com).

c-Myc antibody [N1], N-term

Cat. No. GTX109636

| | |
|---------------------|------------|
| Host | Rabbit |
| Clonality | Polyclonal |
| Isotype | IgG |
| Applications | WB |
| Reactivity | Human |

References (4)

Package

100 µl, 25 µl

Applications

Application Note

*Optimal dilutions/concentrations should be determined by the researcher.

| Suggested dilution | Recommended dilution |
|--------------------|----------------------|
| WB | Assay dependent |

Not tested in other applications.

Calculated MW 49 kDa. ([Note](#))**Product Note** This antibody can detect the endogenous c-Myc, but it is unable to recognize the c-Myc tag.

Properties

| | |
|----------------------|--|
| Form | Liquid |
| Buffer | PBS, 20% Glycerol |
| Preservative | 0.025% ProClin 300 |
| Storage | Store as concentrated solution. Centrifuge briefly prior to opening vial. For short-term storage (1-2 weeks), store at 4°C. For long-term storage, aliquot and store at -20°C or below. Avoid multiple freeze-thaw cycles. |
| Concentration | 2.17 mg/ml (Please refer to the vial label for the specific concentration.) |
| Immunogen | Recombinant protein encompassing a sequence within the N-terminus region of human c-Myc. The exact sequence is proprietary. |
| Purification | Purified by antigen-affinity chromatography. |
| Conjugation | Unconjugated |

Note

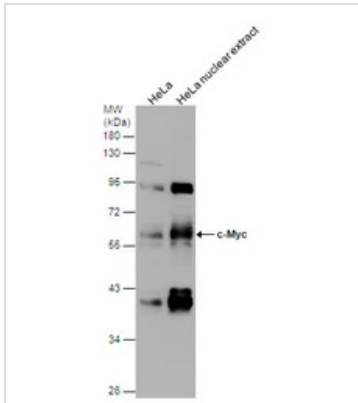
For laboratory research use only. Not for any clinical, therapeutic, or diagnostic use in humans or animals. Not for animal or human consumption.

Purchasers shall not, and agree not to enable third parties to, analyze, copy, reverse engineer or otherwise attempt to determine the structure or sequence of the product.



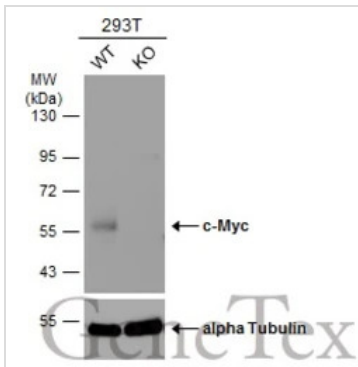
For full product information, images and publications, please visit our [website](#).

DATA IMAGES



GTx109636 WB Image

c-Myc antibody [N1], N-term detects c-Myc protein by Western blot analysis. HeLa whole cell extracts and nuclear extracts (30 μ g) were separated by 10% SDS-PAGE, and the membrane was blotted with c-Myc antibody [N1], N-term (GTx109636) diluted at 1:1000.



GTx109636 WB Image

Wild-type (WT) and c-Myc knockout (KO) 293T cell extracts (30 μ g) were separated by 10% SDS-PAGE, and the membrane was blotted with c-Myc antibody [N1], N-term (GTx109636) diluted at 1:2000. The HRP-conjugated anti-rabbit IgG antibody (GTx213110-01) was used to detect the primary antibody.



For full product information, images and publications, please visit our [website](https://www.genetex.com).

Lin28A antibody

Cat. No. GTX121923

| | |
|---------------------|------------------------|
| Host | Rabbit |
| Clonality | Polyclonal |
| Isotype | IgG |
| Applications | WB, ICC/IF, IHC-P, FCM |
| Reactivity | Human, Mouse, Pig |

References (1)

★★★★☆ Review (1)

Package

100 µl, 25 µl

Applications

Application Note

*Optimal dilutions/concentrations should be determined by the researcher.

| Suggested dilution | Recommended dilution |
|--------------------|----------------------|
| WB | 1:500-1:10000 |
| ICC/IF | Assay dependent |
| IHC-P | 1:100-1:1000 |
| FCM | 1:50-1:200 |

Not tested in other applications.

Calculated MW 23 kDa. ([Note](#))

Properties

| | |
|----------------------|--|
| Form | Liquid |
| Buffer | PBS, 1% BSA, 20% Glycerol |
| Preservative | 0.01% Thimerosal |
| Storage | Store as concentrated solution. Centrifuge briefly prior to opening vial. For short-term storage (1-2 weeks), store at 4°C. For long-term storage, aliquot and store at -20°C or below. Avoid multiple freeze-thaw cycles. |
| Concentration | 1 mg/ml (Please refer to the vial label for the specific concentration.) |
| Immunogen | Recombinant protein encompassing a sequence within the center region of human Lin28A. The exact sequence is proprietary. |
| Purification | Purified by antigen-affinity chromatography. |
| Conjugation | Unconjugated |



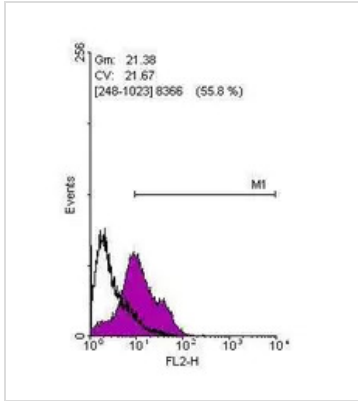
For full product information, images and publications, please visit our [website](#).

For laboratory research use only. Not for any clinical, therapeutic, or diagnostic use in humans or animals. Not for animal or human consumption.

Note

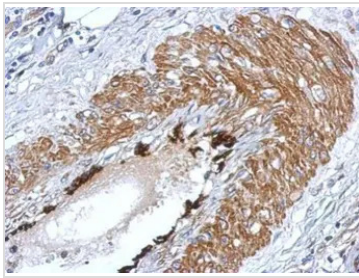
Purchasers shall not, and agree not to enable third parties to, analyze, copy, reverse engineer or otherwise attempt to determine the structure or sequence of the product.

DATA IMAGES



GTX121923 FCM Image

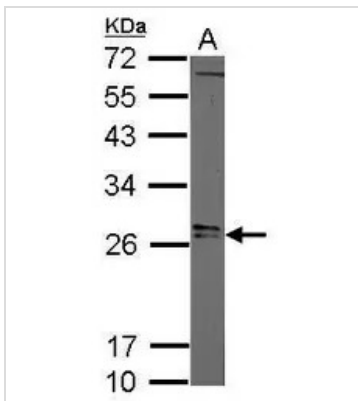
Flow cytometry on human embryonic stem cells, staining with Lin28A (GTX121923)antibody at 1:100 dilution(purple) or rabbit IgG (black).



GTX121923 IHC-P Image

Immunohistochemical analysis of paraffin-embedded human gastric cancer, using Lin28A antibody(GTX121923) antibody at 1:500 dilution.

Antigen Retrieval: Trilogy™ (EDTA based, pH 8.0) buffer, 15min



GTX121923 WB Image

Sample (20 µg of whole cell lysate)

A: mouse ESC

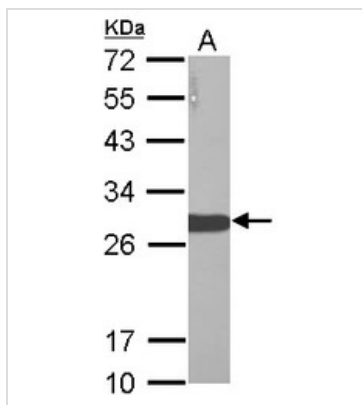
12% SDS PAGE

GTX121923 diluted at 1:3000

The HRP-conjugated anti-rabbit IgG antibody (GTX213110-01) was used to detect the primary antibody.



For full product information, images and publications, please visit our [website](http://www.genetex.com).



GTx121923 WB Image

Sample (20 µg of whole cell lysate)

A: hESC

12% SDS PAGE

GTx121923 diluted at 1:5000

The HRP-conjugated anti-rabbit IgG antibody (GTx213110-01) was used to detect the primary antibody.



For full product information, images and publications, please visit our [website](https://www.genetex.com).

Goat Anti-Rabbit IgG antibody (HRP)

Cat. No. GTX213110-01

| | |
|---------------------|------------------|
| Host | Goat |
| Clonality | Polyclonal |
| Isotype | IgG |
| Applications | WB, IHC-P, ELISA |
| Reactivity | Rabbit |

References (624)

Package

1 ml

Applications

Application Note

*Optimal dilutions/concentrations should be determined by the researcher.

| Suggested dilution | Recommended dilution |
|--------------------|----------------------|
| WB | 1:5000-1:20000 |
| IHC-P | 1:100-1:1000 |
| ELISA | 1:5000-1:20000 |

Not tested in other applications.

Properties

| | |
|----------------------|--|
| Form | Liquid |
| Buffer | 0.05M Tris, 0.15M NaCl |
| Preservative | 0.025% ProClin 300 |
| Storage | Store as concentrated solution. Centrifuge briefly prior to opening vial. For short-term storage (1-2 weeks), store at 4°C. For long-term storage, aliquot and store at -20°C or below. Avoid multiple freeze-thaw cycles. |
| Concentration | 0.2 mg/ml (Please refer to the vial label for the specific concentration.) |
| Immunogen | Highly purified whole rabbit IgG |
| Purification | Purified by antigen-affinity chromatography. |
| Conjugation | Horseradish peroxidase(HRP) |

Note

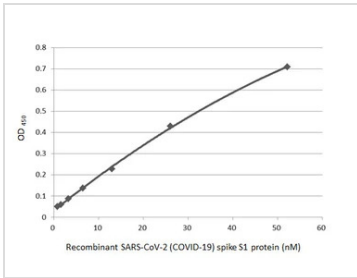
For laboratory research use only. Not for any clinical, therapeutic, or diagnostic use in humans or animals. Not for animal or human consumption.

Purchasers shall not, and agree not to enable third parties to, analyze, copy, reverse engineer or otherwise attempt to determine the structure or sequence of the product.



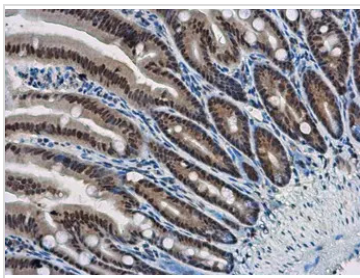
For full product information, images and publications, please visit our [website](#).

DATA IMAGES



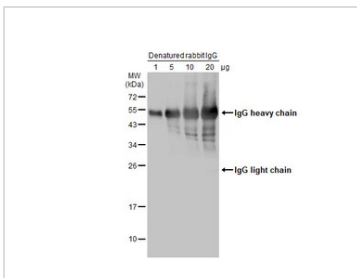
GTXT213110-01 ELISA Image

Indirect ELISA analysis performed by coating plate with recombinant SARS-CoV-2 (COVID-19) Spike S1 protein, His tag (active) (GTX135817-pro) (52.15-0.81 nM). Coated protein was probed with SARS-CoV-2 (COVID-19) Spike S1 antibody [HL134] (GTX635671) (1 µg/mL). Goat anti-rabbit IgG antibody (HRP) (GTX213110-01) (1:10000) was used to detect bound primary antibody.



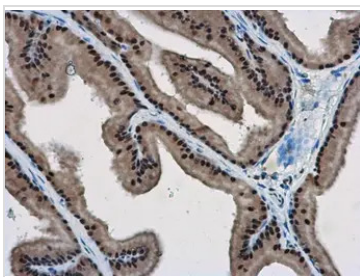
GTXT213110-01 IHC-P Image

WBP11 antibody detects WBP11 protein at nucleus in mouse intestine by immunohistochemical analysis.
Sample: Paraffin-embedded mouse intestine.
WBP11 antibody (GTX118654) diluted at 1:500.
The signal was developed by Rabbit IgG antibody (HRP) (GTX213110-01)
Antigen Retrieval: Citrate buffer, pH 6.0, 15 min



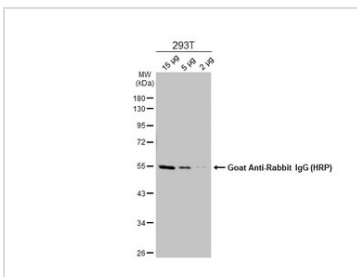
GTXT213110-01 WB Image

Various amounts of denatured rabbit IgG protein were separated by 12% SDS-PAGE, and the membrane was blotted with HRP-conjugated anti-rabbit IgG antibody (GTX213110-01) diluted at 1:5000.



GTXT213110-01 IHC-P Image

WBP11 antibody detects WBP11 protein at nucleus in rat prostate by immunohistochemical analysis.
Sample: Paraffin-embedded rat prostate.
WBP11 antibody (GTX118654) diluted at 1:500.
The signal was developed by Rabbit IgG antibody (HRP) (GTX213110-01).
Antigen Retrieval: Citrate buffer, pH 6.0, 15 min

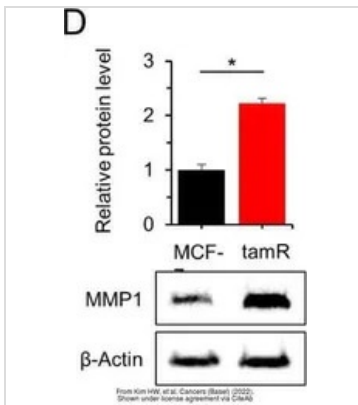


GTXT213110-01 WB Image

Various whole cell extracts were separated by 10% SDS-PAGE, and the membrane was blotted with alpha Tubulin antibody (GTX112141) diluted at 1:10000. The HRP-conjugated anti-rabbit IgG antibody (GTX213110-01) was used to detect the primary antibody.

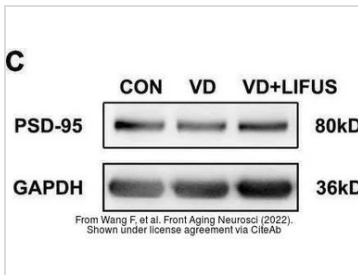


For full product information, images and publications, please visit our [website](https://www.genetex.com).



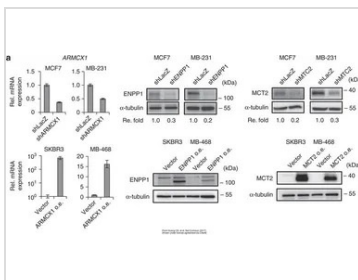
GTx213110-01 WB Image

The data was published in the 2022 in Cancers (Basel). [PMID: 35267540](#)



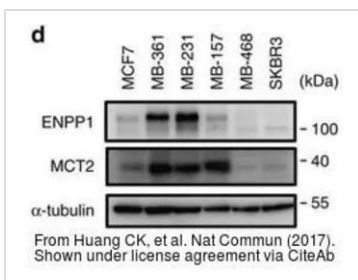
GTx213110-01 WB Image

The data was published in the 2022 in Front Aging Neurosci. [PMID: 35264943](#)



GTx213110-01 WB Image

The data was published in the 2017 in Nat Commun. [PMID: 28281525](#)

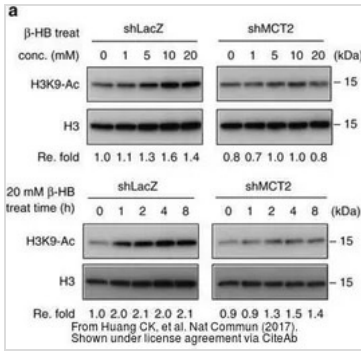


GTx213110-01 WB Image

The data was published in the 2017 in Nat Commun. [PMID: 28281525](#)

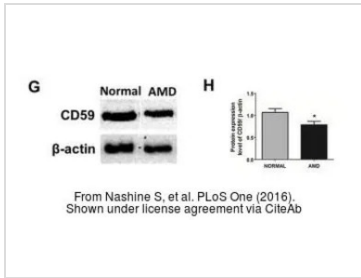


For full product information, images and publications, please visit our [website](#).



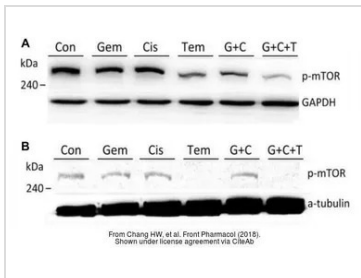
GTx213110-01 WB Image

The data was published in the 2017 in Nat Commun. [PMID: 28281525](#)



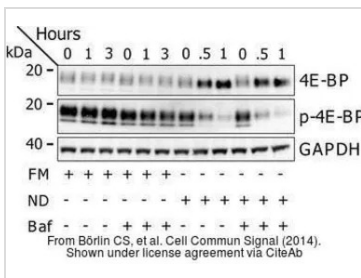
GTx213110-01 WB Image

The data was published in the 2016 in PLoS One. [PMID: 27486856](#)



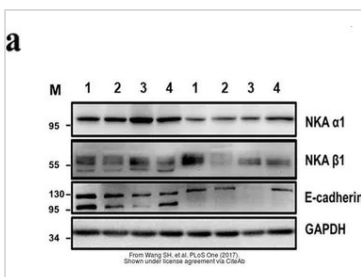
GTx213110-01 WB Image

The data was published in the journal Front Pharmacol in 2018. [PMID: 30087612](#)



GTx213110-01 WB Image

The data was published in the journal Cell Commun Signal in 2014. [PMID: 25214434](#)

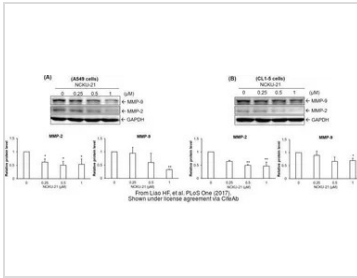


GTx213110-01 WB Image

The data was published in the journal PLoS One in 2017. [PMID: 28832634](#)

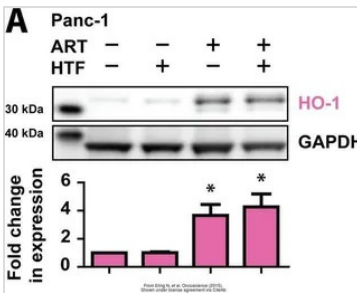


For full product information, images and publications, please visit our [website](#).



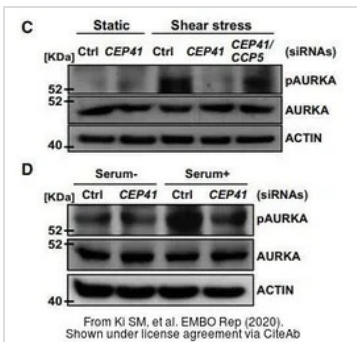
GTx213110-01 WB Image

The data was published in the journal PLoS One in 2017. [PMID: 28945763](#)



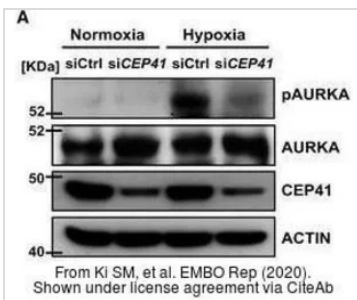
GTx213110-01 WB Image

The data was published in the journal Oncoscience in 2015. [PMID: 26097885](#)



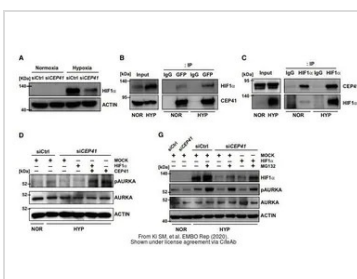
GTx213110-01 WB Image

The data was published in the journal EMBO Rep in 2020. [PMID: 31885126](#)



GTx213110-01 WB Image

The data was published in the journal EMBO Rep in 2020. [PMID: 31885126](#)



GTx213110-01 WB Image

The data was published in the journal EMBO Rep in 2020. [PMID: 31885126](#)



For full product information, images and publications, please visit our [website](#).

SOX2 antibody [HL1193]

Cat. No. GTX636505

| | |
|--------------|------------------------|
| Host | Rabbit |
| Clonality | Monoclonal |
| Isotype | IgG |
| Applications | WB, ICC/IF, IHC-P, IP |
| Reactivity | Human, Mouse, Rat, Cat |

★★★★★ Review (2)

Package
100 µl, 25 µl

Applications

Application Note

*Optimal dilutions/concentrations should be determined by the researcher.

| Suggested dilution | Recommended dilution |
|--------------------|----------------------|
| WB | 1:500-1:3000 |
| ICC/IF | Assay dependent |
| IHC-P | Assay dependent |
| IP | Assay dependent |

Not tested in other applications.

Observed MW (kDa) 34 kDa.**Product Note** This antibody may not be suitable for rat IHC-P assay, as its rat reactivity is based on ICC/IF testing.

Properties

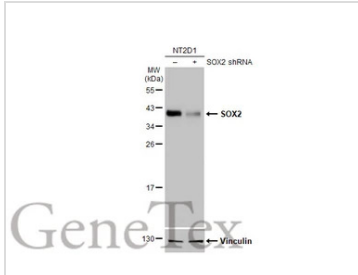
| | |
|---------------|--|
| Form | Liquid |
| Buffer | PBS |
| Preservative | No preservatives |
| Storage | Store as concentrated solution. Centrifuge briefly prior to opening vial. For short-term storage (1-2 weeks), store at 4°C. For long-term storage, aliquot and store at -20°C or below. Avoid multiple freeze-thaw cycles. |
| Concentration | 1 mg/ml (Please refer to the vial label for the specific concentration.) |
| Immunogen | Recombinant fragment of human SOX2. |
| Purification | Affinity purified by Protein A. |
| Conjugation | Unconjugated |

For full product information, images and publications, please visit our [website](#).

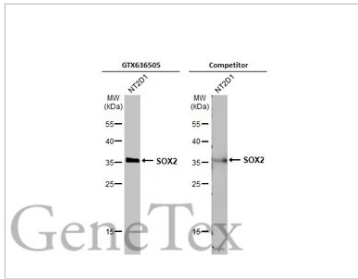
For laboratory research use only. Not for any clinical, therapeutic, or diagnostic use in humans or animals. Not for animal or human consumption.

Note

Purchasers shall not, and agree not to enable third parties to, analyze, copy, reverse engineer or otherwise attempt to determine the structure or sequence of the product.

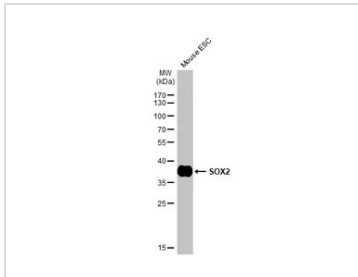
DATA IMAGES

GTX636505 WB Image

Non-transfected (–) and transfected (+) NT2D1 whole cell extract (30 µg) were separated by 12% SDS-PAGE, and the membrane was blotted with SOX2 antibody [HL1193] (GTX636505) diluted at 1:1000. The HRP-conjugated anti-rabbit IgG antibody (GTX213110-01) was used to detect the primary antibody.

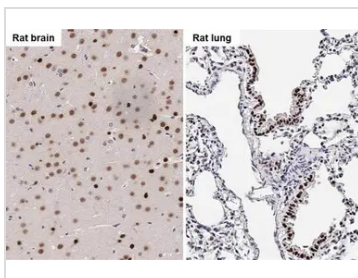

GTX636505 WB Image

Whole cell extract (30 µg) was separated by 12% SDS-PAGE, and the membranes were blotted with SOX2 antibody [HL1193] (GTX636505) diluted at 1:1000 and competitor's antibody (sc-17320) diluted at 1:1000. The HRP-conjugated anti-rabbit IgG antibody (GTX213110-01) was used to detect the primary antibody.

*The competitor is not affiliated with GeneTex and does not endorse this product.


GTX636505 WB Image

Mouse ESC extract (50 µg) was separated by 12% SDS-PAGE, and the membrane was blotted with SOX2 antibody [HL1193] (GTX636505) diluted at 1:1000. The HRP-conjugated anti-rabbit IgG antibody (GTX213110-01) was used to detect the primary antibody.


GTX636505 IHC-P Image

SOX2 antibody detects SOX2 protein by immunohistochemical analysis.

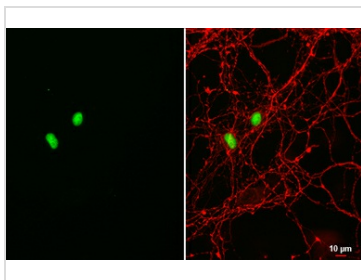
Sample: Paraffin-embedded rat tissues.

SOX2 stained by SOX2 antibody (GTX636505) diluted at 1:100.

Antigen Retrieval: Citrate buffer, pH 6.0, 15 min



For full product information, images and publications, please visit our [website](https://www.genetex.com).



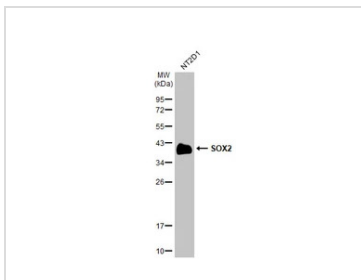
GTX636505 ICC/IF Image

SOX2 antibody [HL1193] detects SOX2 protein at nucleus by immunofluorescent analysis.

Sample: DIV10 rat E18 primary hippocampal neuron cells were fixed in 4% paraformaldehyde at RT for 15 min.

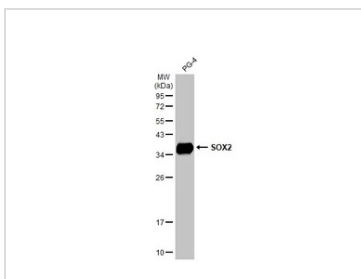
Green: SOX2 stained by SOX2 antibody [HL1193] (GTX636505) diluted at 1:500.

Red: Tau, an axon marker, stained by Tau antibody [GT287] (GTX634809) diluted at 1:500.



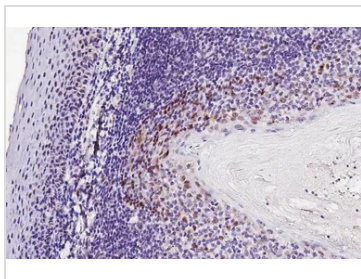
GTX636505 WB Image

Whole cell extract (30 µg) was separated by 12% SDS-PAGE, and the membrane was blotted with SOX2 antibody [HL1193] (GTX636505) diluted at 1:1000. The HRP-conjugated anti-rabbit IgG antibody (GTX213110-01) was used to detect the primary antibody.



GTX636505 WB Image

Whole cell extract (30 µg) was separated by 12% SDS-PAGE, and the membrane was blotted with SOX2 antibody [HL1193] (GTX636505) diluted at 1:1000. The HRP-conjugated anti-rabbit IgG antibody (GTX213110-01) was used to detect the primary antibody.



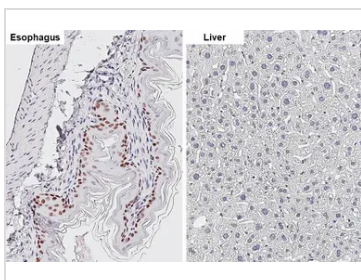
GTX636505 IHC-P Image

SOX2 antibody [HL1193] detects SOX2 protein by immunohistochemical analysis.

Sample: Paraffin-embedded human tonsil.

SOX2 stained by SOX2 antibody [HL1193] (GTX636505) diluted at 1:100.

Antigen Retrieval: Tris-EDTA buffer, pH 9.0, 15 min



GTX636505 IHC-P Image

SOX2 antibody [HL1193] detects SOX2 protein by immunohistochemical analysis.

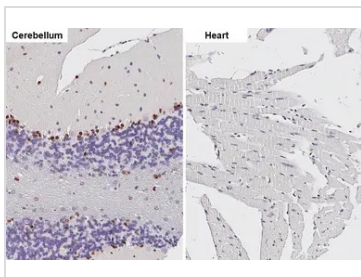
Sample: Paraffin-embedded mouse tissues.

SOX2 stained by SOX2 antibody [HL1193] (GTX636505) diluted at 1:2000.

Antigen Retrieval: Citrate buffer, pH 6.0, 15 min



For full product information, images and publications, please visit our [website](https://www.genetex.com).


GTX636505 IHC-P Image

SOX2 antibody [HL1193] detects SOX2 protein by immunohistochemical analysis.

Sample: Paraffin-embedded mouse tissues.

SOX2 stained by SOX2 antibody [HL1193] (GTX636505) diluted at 1:2000.

Antigen Retrieval: Citrate buffer, pH 6.0, 15 min



For full product information, images and publications, please visit our [website](#).