

GTX300042

Tag Antibody Panel-HA, 6x his, GFP antibodies

Product Content

Cat No	Product Name	Reactivity	Application	Package
GTX113617	GFP antibody	Species independent	WB, ICC/IF, IHC-P, IHC-Fr, IHC-Wm, IP, Dot, ELISA, IHC	10 µl
GTX115044	HA tag antibody	Species independent	WB, ICC/IF, IP, ELISA, ChIP assay	10 µl
GTX115045	6X His tag antibody	Species independent	WB, IHC-Wm, IP, ELISA	10 µl

Note

For In vitro laboratory use only. Not for any clinical, therapeutic, or diagnostic use in humans or animals. Not for animal or human consumption.



For full product information, images and publications, please visit our [website](#).

GFP antibody

Cat. No. GTX113617

Host	Rabbit
Clonality	Polyclonal
Isotype	IgG
Application	WB, ICC/IF, IHC-P, IHC-Fr, IHC-Wm, IP, Dot, ELISA, IHC
Reactivity	Species independent

Reference (168)

★★★★★ Review (8)

Package

100 µl, 25 µl

PRODUCT

Summary

GFP antibody recognizes the green fluorescent protein (GFP), a fluorophore in widespread use in biomedical research. GFP fluorescence allows real-time study of physiological processes involving fusion proteins or GFP-expressing cells. This antibody also detects other GFP variants, including EGFP and YFP, but not red fluorescent protein (RFP).

APPLICATION

Application Note

*Optimal dilutions/concentrations should be determined by the researcher.

Suggested dilution	Recommended dilution
WB	1:5000-1:20000
ICC/IF	1:1000-1:5000
IHC-P	Assay dependent
IHC-Fr	Assay dependent
IHC-Wm	1:100-1:500
IP	1:100-1:500
Dot	Assay dependent
ELISA	Assay dependent
IHC	Assay dependent

Not tested in other applications.

Calculated MW 29 kDa. ([Note](#))

Product Note This antibody reacts with GFP variants including GFP, EGFP, and YFP.

PROPERTIES

Form	Liquid
Buffer	PBS, 1% BSA, 20% Glycerol
Preservative	0.025% ProClin 300



For full product information, images and publications, please visit our [website](#).

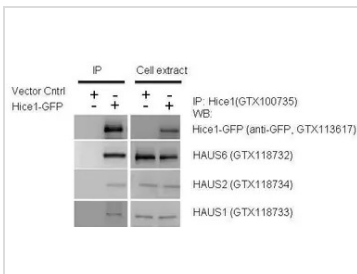
Storage	Store as concentrated solution. Centrifuge briefly prior to opening vial. For short-term storage (1-2 weeks), store at 4°C. For long-term storage, aliquot and store at -20°C or below. Avoid multiple freeze-thaw cycles.
Concentration	0.17 mg/ml (Please refer to the vial label for the specific concentration.)
Immunogen	Full length GFP recombinant protein
Purification	Purified by antigen-affinity chromatography.
Conjugation	Unconjugated
Note	For laboratory research use only. Not for any clinical, therapeutic, or diagnostic use in humans or animals. Not for animal or human consumption. Purchasers shall not, and agree not to enable third parties to, analyze, copy, reverse engineer or otherwise attempt to determine the structure or sequence of the product.

DATA IMAGES



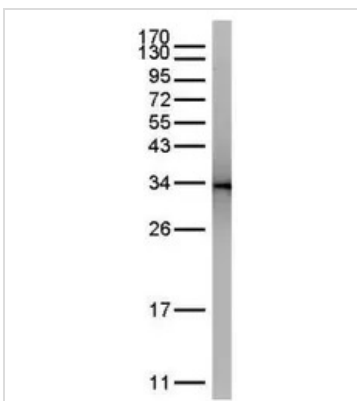
GTX113617 IHC-Wm Image

Immunohistochemical analysis (whole mount) of transgenic zebrafish embryo (fixed with ice-cold acetone), using GFP(GTX113617) antibody at 1:200 dilution.



GTX113617 WB Image

IP-WB assay to show that Hice1 (GTX113617) co-immunoprecipitated with other Augmin components HAUS6 (GTX118732), HAUS2 (GTX118734) and HAUS1 (GTX118733) in U2OS cells. The HRP-conjugated anti-rabbit IgG antibody (GTX213110-01) was used to detect the primary antibody.



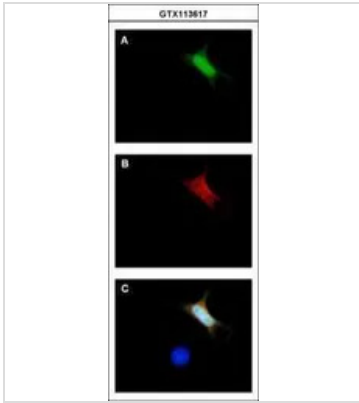
GTX113617 IP Image

GFP was immunoprecipitated from bacterial GFP-expressing lysate using 1 ug of anti-GFP antibody (GTX113617).

The precipitated GFP was detected by GTX113617 diluted at 1:15000.

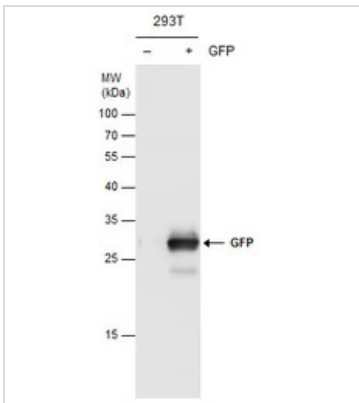


For full product information, images and publications, please visit our [website](#).



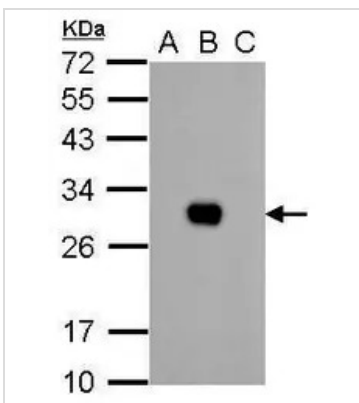
GTX113617 ICC/IF Image

Immunofluorescence analysis of GFP-transfected HeLa. A: GFP is expressed in the transfected cell. B: The cell expressing GFP can be detected using rabbit anti-GFP ab (GTX113617, 1:5000) followed by Alexa Fluor 594 (1:500) goat anti-rabbit IgG. C: Merged with DNA probe, the lower cell with no GFP expressed as a negative control.



GTX113617 WB Image

GFP antibody detects GFP protein by Western blot analysis. Non-transfected (-) and GFP-transfected (+) 293T whole cell extracts (30 µg) were separated by 12% SDS-PAGE, and the membrane was blotted with GFP antibody (GTX113617) diluted at 1:10000.



GTX113617 WB Image

GFP antibody detects GFP protein by western blot analysis.

A. 1 µg 293T whole cell extract

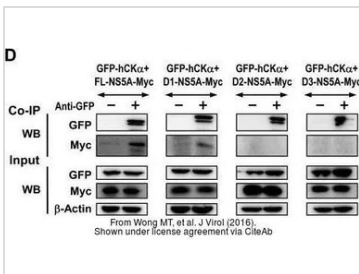
B. 1 µg 293T whole cell extract expressing GFP-tagged protein

C. 1 µg 293T whole cell extract expressing RFP-tagged protein

12% SDS-PAGE

GFP antibody (GTX113617) dilution: 1:10000

The HRP-conjugated anti-rabbit IgG antibody (GTX213110-01) was used to detect the primary antibody.

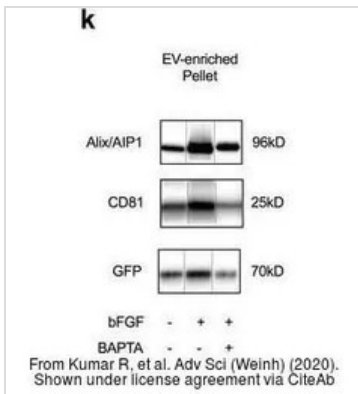


GTX113617 WB IP Image

The data was published in the journal J Virol in 2016. [PMID: 27489281](https://pubmed.ncbi.nlm.nih.gov/27489281/)

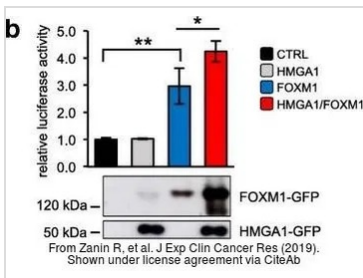


For full product information, images and publications, please visit our [website](https://www.genetex.com).



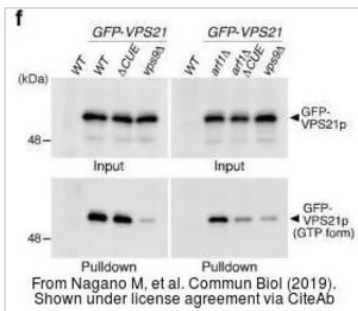
GTx113617 WB Image

The data was published in the journal Adv Sci (Weinh) in 2020. [PMID: 32195080](#)



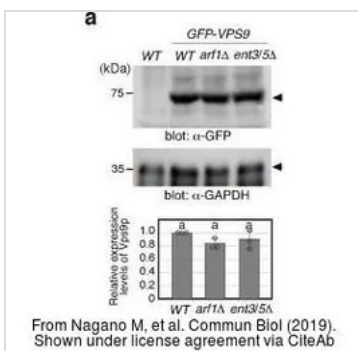
GTx113617 WB Image

The data was published in the journal J Exp Clin Cancer Res in 2019. [PMID: 31311575](#)



GTx113617 WB Image

The data was published in the journal Commun Biol in 2019. [PMID: 31754649](#)

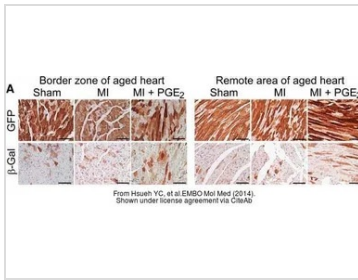


GTx113617 WB Image

The data was published in the journal Commun Biol in 2019. [PMID: 31754649](#)

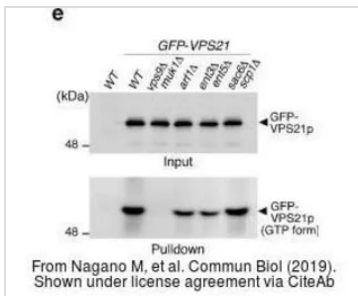


For full product information, images and publications, please visit our [website](#).



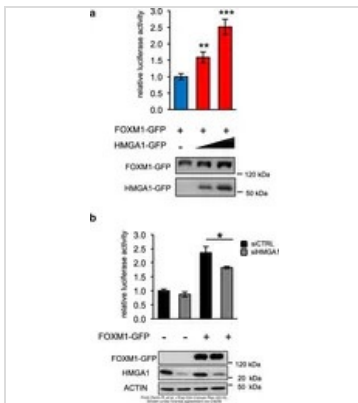
GTX113617 IHC-P Image

The data was published in the journal EMBO Mol Med in 2014. [PMID: 24448489](#)



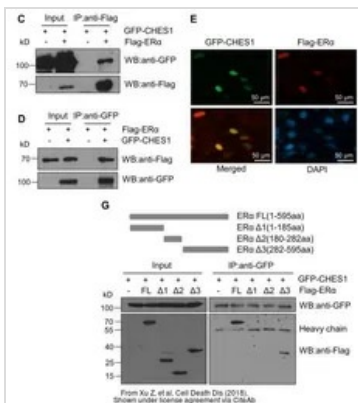
GTX113617 WB Image

The data was published in the journal Commun Biol in 2019. [PMID: 31754649](#)



GTX113617 WB Image

The data was published in the journal J Exp Clin Cancer Res in 2019. [PMID: 31311575](#)

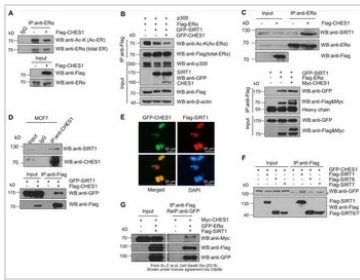


GTX113617 WB IP Image

The data was published in the journal Cell Death Dis in 2018.[PMID: 29752474](#)

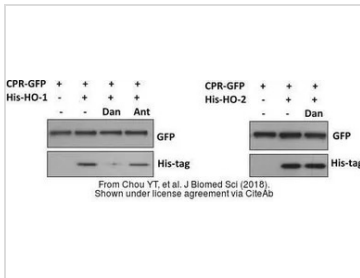


For full product information, images and publications, please visit our [website](#).



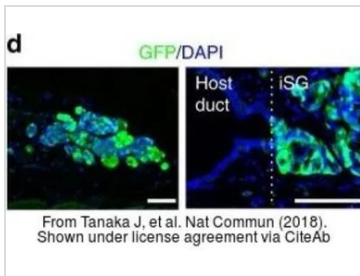
GTX113617 WB Image

The data was published in the journal Cell Death Dis in 2018. [PMID: 29752474](#)



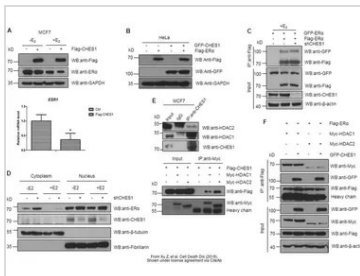
GTX113617 WB Image

The data was published in the journal J Biomed Sci in 2018. [PMID: 29361943](#)



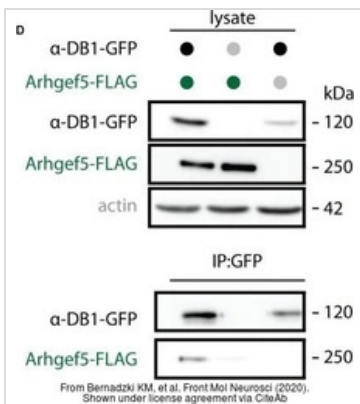
GTX113617 IHC-Fr Image

The data was published in the journal Nat Commun in 2018. [PMID: 30310071](#)



GTX113617 WB Image

The data was published in the journal Cell Death Dis in 2018. [PMID: 29752474](#)



GTX113617 WB IP Image

The data was published in the journal Front Mol Neurosci in 2020. [PMID: 32587503](#)



For full product information, images and publications, please visit our [website](#).

HA tag antibody

Cat. No. GTX115044

Host	Rabbit
Clonality	Polyclonal
Isotype	IgG
Application	WB, ICC/IF, IP, ELISA, ChIP assay
Reactivity	Species independent

Reference (55)

★★★★★ Review (5)

Package

100 µl, 25 µl

APPLICATION

Application Note

*Optimal dilutions/concentrations should be determined by the researcher.

Suggested dilution	Recommended dilution
WB	1:1000-1:10000
ICC/IF	1:100-1:1000
IP	1:100-1:500
ELISA	1:1000-1:10000
ChIP assay	Assay dependent

Not tested in other applications.

PROPERTIES

Form	Liquid
Buffer	PBS, 1% BSA, 20% Glycerol
Preservative	0.025% ProClin 300
Storage	Store as concentrated solution. Centrifuge briefly prior to opening vial. For short-term storage (1-2 weeks), store at 4°C. For long-term storage, aliquot and store at -20°C or below. Avoid multiple freeze-thaw cycles.
Concentration	0.2 mg/ml (Please refer to the vial label for the specific concentration.)
Immunogen	The immunogen used to generate this antibody corresponds to HA tag
Purification	Purified by antigen-affinity chromatography.
Conjugation	Unconjugated

Note

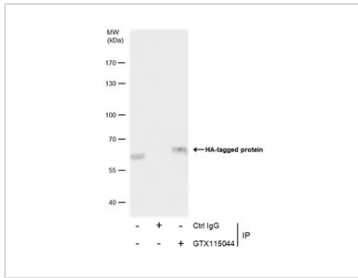
For laboratory research use only. Not for any clinical, therapeutic, or diagnostic use in humans or animals. Not for animal or human consumption.

Purchasers shall not, and agree not to enable third parties to, analyze, copy, reverse engineer or otherwise attempt to determine the structure or sequence of the product.



For full product information, images and publications, please visit our [website](#).

DATA IMAGES

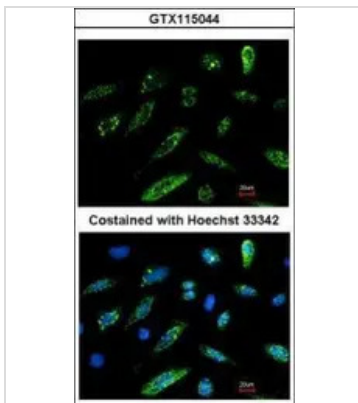


GTX115044 IP Image

Immunoprecipitation of HA tag protein from 293T whole cell extracts using 5 µg of HA tag antibody (GTX115044).

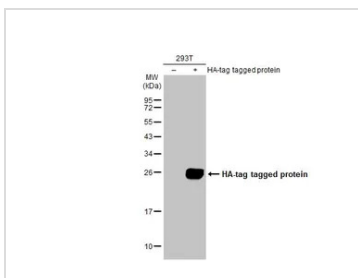
Western blot analysis was performed using HA tag antibody (GTX115044) diluted at 1:2500.

EasyBlot HRP-conjugated anti rabbit IgG antibody (GTX221666-01) was used to detect the primary antibody.



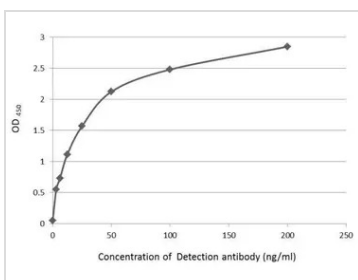
GTX115044 ICC/IF Image

Immunofluorescence analysis of HA-recombinant protein transfected HeLa cells which fixed with paraformaldehyde, using HA tag(GTX115044) antibody at 1:500 dilution.



GTX115044 WB Image

Non-transfected (-) and transfected (+) 293T whole cell extracts (30 µg) were separated by 12% SDS-PAGE, and the membrane was blotted with HA tag antibody (GTX115044) diluted at 1:3000. The HRP-conjugated anti-rabbit IgG antibody (GTX213110-01) was used to detect the primary antibody.

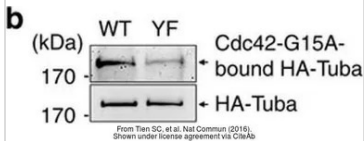


GTX115044 ELISA Image

An ELISA plate is coated with 50 µL of a HA-Tag conjugated BSA at concentration of 5 µg/mL. The peptide conjugated carrier protein is coated and detected with anti-HA tag antibody (GTX115044) at concentration ranged from 3.1 to 200 ng/mL.

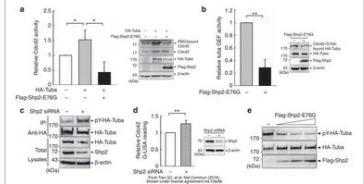


For full product information, images and publications, please visit our [website](https://www.genetex.com).



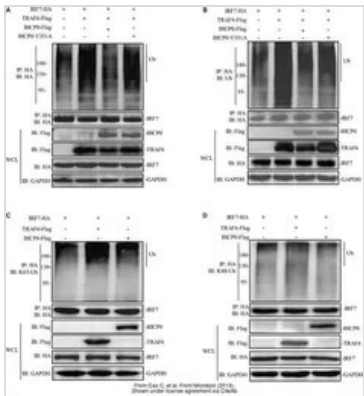
GTx115044 WB Image

The data was published in the journal Nat Commun in 2016. [PMID: 26783207](https://pubmed.ncbi.nlm.nih.gov/26783207/)



GTx115044 WB Image

The data was published in the journal Nat Commun in 2016. [PMID: 26783207](https://pubmed.ncbi.nlm.nih.gov/26783207/)



GTx115044 WB Image

The data was published in the journal Front Microbiol in 2019. [PMID: 31969874](https://pubmed.ncbi.nlm.nih.gov/31969874/)



For full product information, images and publications, please visit our [website](https://www.genetex.com).

6X His tag antibody

Cat. No. GTX115045

Host	Rabbit
Clonality	Polyclonal
Isotype	IgG
Application	WB, IHC-Wm, IP, ELISA
Reactivity	Species independent

Reference (16)

★★★★★ Review (1)

Package

100 µl, 25 µl

APPLICATION

Application Note

*Optimal dilutions/concentrations should be determined by the researcher.

Suggested dilution	Recommended dilution
WB	1:5000-1:20000
IHC-Wm	Assay dependent
IP	1:100-1:500
ELISA	1:1000-1:10000

Not tested in other applications.

PROPERTIES

Form	Liquid
Buffer	PBS, 1% BSA, 20% Glycerol
Preservative	0.025% ProClin 300
Storage	Store as concentrated solution. Centrifuge briefly prior to opening vial. For short-term storage (1-2 weeks), store at 4°C. For long-term storage, aliquot and store at -20°C or below. Avoid multiple freeze-thaw cycles.
Concentration	0.1 mg/ml (Please refer to the vial label for the specific concentration.)
Immunogen	The immunogen used to generate this antibody corresponds to 6X His tag
Purification	Purified by antigen-affinity chromatography.
Conjugation	Unconjugated

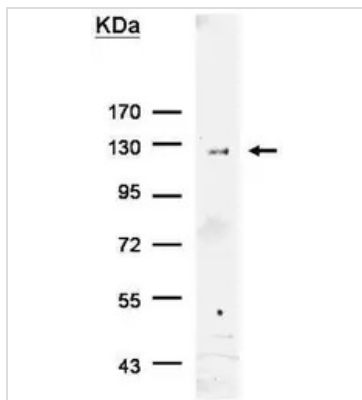
Note

For laboratory research use only. Not for any clinical, therapeutic, or diagnostic use in humans or animals. Not for animal or human consumption.

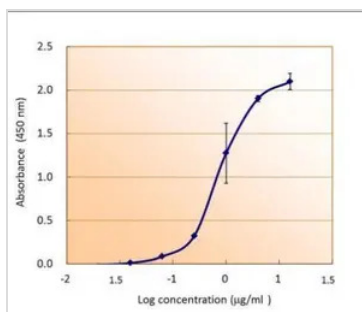
Purchasers shall not, and agree not to enable third parties to, analyze, copy, reverse engineer or otherwise attempt to determine the structure or sequence of the product.



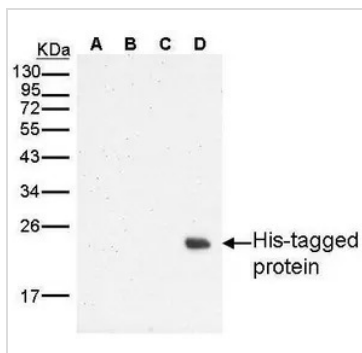
For full product information, images and publications, please visit our [website](#).

DATA IMAGES

GTX115045 IP Image

His-tagged protein was immunoprecipitated from transfected cells using 8 μ g of 6X His tag antibody (GTX115045). The precipitated His-tagged protein was detected by GTX115045 diluted at 1:500, and used EasyBlot anti-rabbit IgG (GTX221666-01) as secondary reagent.


GTX115045 ELISA Image

6X His tag antibody detects His-tagged recombinant proteins by indirect ELISA analysis. Various dilutions of His-tagged recombinant proteins coated onto the 96-well plate were detected by using 2.5 μ g/ml 6x His antibody (GTX115045). Bound Abs were further detected by using HRP-conjugated goat anti-rabbit IgG (GTX213110-01) with HRP substrates.


GTX115045 WB Image

Sample

A: 10 μ g of non-transformed E. coli lysate

B: 10 μ g of non-transformed E. coli lysate, induced

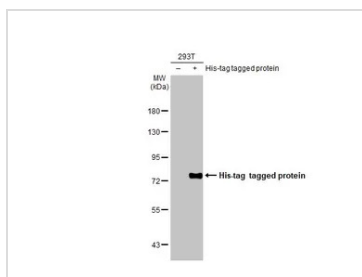
C: 10 μ g E.coli Lysate harbouring His-tagged recombinant protein (N-terminal linked), non-induced

D: 10 μ g E.coli Lysate harbouring His-tagged recombinant protein (N-terminal linked), induced

12% SDS PAGE

GTX115045 diluted at 1:1000

The HRP-conjugated anti-rabbit IgG antibody (GTX213110-01) was used to detect the primary antibody.


GTX115045 WB Image

Non-transfected (–) and transfected (+) 293T whole cell extracts (30 μ g) were separated by 7.5% SDS-PAGE, and the membrane was blotted with 6X His tag antibody (GTX115045) diluted at 1:10000. The HRP-conjugated anti-rabbit IgG antibody (GTX213110-01) was used to detect the primary antibody.



For full product information, images and publications, please visit our [website](https://www.genetex.com).