

IRE1 alpha antibody

Cat. No. GTX30005

Host	Rabbit
Clonality	Polyclonal
Isotype	IgG
Applications	WB, ICC/IF, IHC-P, ELISA
Reactivity	Human, Mouse, Rat

References (4)

Package

100 µg

Applications

Application Note

*Optimal dilutions/concentrations should be determined by the researcher.

Suggested dilution	Recommended dilution
WB	0.5-2 µg/ml
ICC/IF	1-2 µg/ml
IHC-P	5 µg/ml
ELISA	Assay dependent

Not tested in other applications.

Calculated MW 110 kDa. ([Note](#))

Properties

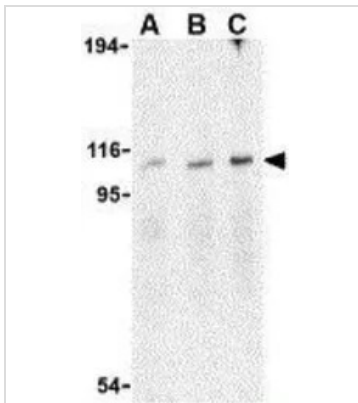
Form	Liquid
Buffer	PBS
Preservative	0.02% Sodium azide
Storage	Store as concentrated solution. Centrifuge briefly prior to opening vial. For short-term storage (1-2 weeks), store at 4°C. For long-term storage, aliquot and store at -20°C or below. Avoid multiple freeze-thaw cycles.
Concentration	1 mg/ml (Please refer to the vial label for the specific concentration.)
Immunogen	A 16 amino acid peptide near the carboxy terminus of human IRE1 alpha.
Purification	Purified by affinity chromatography
Conjugation	Unconjugated

Note

For laboratory research use only. Not for any clinical, therapeutic, or diagnostic use in humans or animals. Not for animal or human consumption.

Purchasers shall not, and agree not to enable third parties to, analyze, copy, reverse engineer or otherwise attempt to determine the structure or sequence of the product.

For full product information, images and publications, please visit our [website](#).

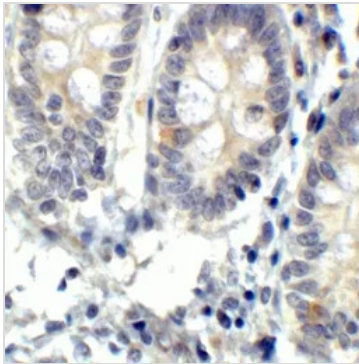
DATA IMAGES

GTX30005 WB Image

WB analysis of A20 cell lysate using GTX30005 IRE1 alpha antibody.

Lane A : 0.5 µg/ml

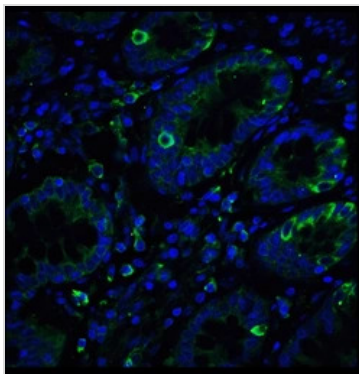
Lane B : 1µg/ml

Lane C : 2µg/ml


GTX30005 IHC-P Image

IHC-P analysis of human small intestine tissue using GTX30005 IRE1 alpha antibody.

loading: 2 µg/ml


GTX30005 ICC/IF Image

ICC/IF analysis of human small intestine using GTX30005 IRE1 alpha antibody.

loading: 20 µg/ml.

Green: IRE1 alpha Antibody (GTX30005)

Blue: DAPI staining



For full product information, images and publications, please visit our [website](https://www.genetex.com).