

GTX300061

Hypoxia pathway Antibody Panel

Product Content

Cat No	Product Name	Reactivity	Application	Package
GTX101147	Heme Oxygenase 1 antibody	Human, Mouse, Rat, Monkey	WB, ICC/IF, IHC-P, ELISA, Sandwich ELISA	25 µl
GTX110585	NFkB p105 antibody	Human, Mouse, Dog	WB, ICC/IF, IHC-P, ChIP assay, IHC	25 µl
GTX125971	ARD1A antibody	Human, Mouse	WB, ICC/IF, IHC-P, IP	25 µl
GTX127309	HIF1 alpha antibody	Human, Mouse, Rat, Rabbit, Bovine	WB, ICC/IF, IHC-P, IHC-Fr, IP, ChIP assay	25 µl
GTX127310	Twist1/2 antibody	Human, Mouse, Rat, Drosophila	WB, IHC-P, IHC	25 µl
GTX213110-01	Goat Anti-Rabbit IgG antibody (HRP)	Rabbit	WB, IHC-P, ELISA	25 µl
GTX30114	HIF2 alpha antibody	Human, Mouse, Rat, Monkey, Fish	WB, ICC/IF, IHC-P, IHC	25 µl

Note

For In vitro laboratory use only. Not for any clinical, therapeutic, or diagnostic use in humans or animals. Not for animal or human consumption.



For full product information, images and publications, please visit our [website](#).

Heme Oxygenase 1 antibody

Cat. No. GTX101147

Host	Rabbit
Clonality	Polyclonal
Isotype	IgG
Application	WB, ICC/IF, IHC-P, ELISA, Sandwich ELISA
Reactivity	Human, Mouse, Rat, Monkey

Reference (68)

★★★★★ Review (1)

Package

100 µl, 25 µl

APPLICATION

Application Note

*Optimal dilutions/concentrations should be determined by the researcher.

Suggested dilution	Recommended dilution
WB	1:500-1:3000
ICC/IF	1:100-1:1000
IHC-P	1:100-1:1000
ELISA	Assay dependent
Sandwich ELISA	Assay dependent

Note : Capture : GTX633677, Detection: GTX101147

Not tested in other applications.

Calculated MW 33 kDa. ([Note](#))

PROPERTIES

Form	Liquid
Buffer	PBS, 1% BSA, 20% Glycerol
Preservative	0.025% ProClin 300
Storage	Store as concentrated solution. Centrifuge briefly prior to opening vial. For short-term storage (1-2 weeks), store at 4°C. For long-term storage, aliquot and store at -20°C or below. Avoid multiple freeze-thaw cycles.
Concentration	0.45 mg/ml (Please refer to the vial label for the specific concentration.)
Immunogen	Recombinant protein encompassing a sequence within the center region of human Heme Oxygenase 1. The exact sequence is proprietary.
Purification	Purified by antigen-affinity chromatography.
Conjugation	Unconjugated



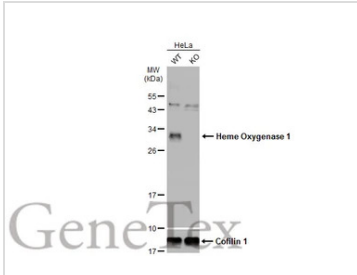
For full product information, images and publications, please visit our [website](#).

Date 2024 / 05 / 12 Page 2 of 41

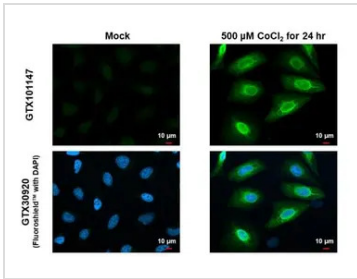
For laboratory research use only. Not for any clinical, therapeutic, or diagnostic use in humans or animals. Not for animal or human consumption.

Note

Purchasers shall not, and agree not to enable third parties to, analyze, copy, reverse engineer or otherwise attempt to determine the structure or sequence of the product.

DATA IMAGES

GTX101147 WB Image

Wild-type (WT) and Heme Oxygenase 1 knockout (KO) HeLa cell extracts (30 µg) were separated by 12% SDS-PAGE, and the membrane was blotted with Heme Oxygenase 1 antibody (GTX101147) diluted at 1:500. The HRP-conjugated anti-rabbit IgG antibody (GTX213110-01) was used to detect the primary antibody, and the signal was developed with Trident ECL plus-Enhanced.

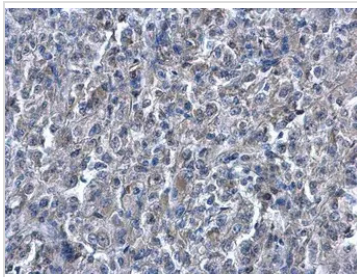

GTX101147 ICC/IF Image

Heme Oxygenase 1 antibody detects Heme Oxygenase 1 protein at endoplasmic reticulum and nucleus by immunofluorescent analysis.

Sample: Mock and treated HeLa cells were fixed in 4% paraformaldehyde at RT for 15 min.

Green: Heme Oxygenase 1 stained by Heme Oxygenase 1 antibody (GTX101147) diluted at 1:500.

Blue: Fluoroshield with DAPI (GTX30920).

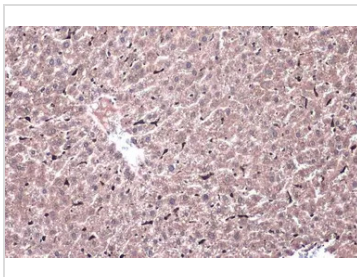

GTX101147 IHC-P Image

Heme Oxygenase 1 antibody detects Heme Oxygenase 1 protein at cytoplasm on human renal carcinoma by immunohistochemical analysis.

Sample: Paraffin-embedded human renal carcinoma .

Heme Oxygenase 1 antibody (GTX101147) diluted at 1:500.

Antigen Retrieval: Trilogy™ (EDTA based, pH 8.0) buffer, 15min


GTX101147 IHC-P Image

Heme Oxygenase 1 antibody detects Heme Oxygenase 1 protein at cytoplasm by immunohistochemical analysis.

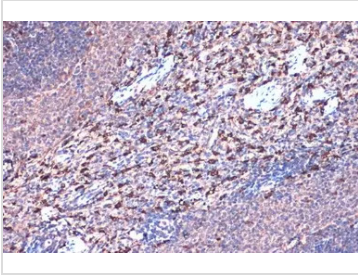
Sample: Paraffin-embedded mouse liver.

Heme Oxygenase 1 stained by Heme Oxygenase 1 antibody (GTX101147) diluted at 1:500.

Antigen Retrieval: Citrate buffer, pH 6.0, 15 min



For full product information, images and publications, please visit our [website](https://www.genetex.com).

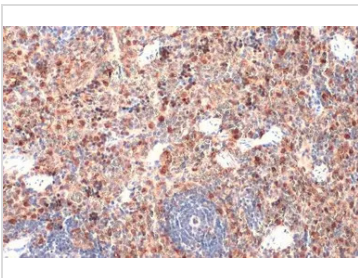

GTX101147 IHC-P Image

Heme Oxygenase 1 antibody detects Heme Oxygenase 1 protein at cytoplasm by immunohistochemical analysis.

Sample: Paraffin-embedded rat spleen.

Heme Oxygenase 1 stained by Heme Oxygenase 1 antibody (GTX101147) diluted at 1:500.

Antigen Retrieval: Citrate buffer, pH 6.0, 15 min

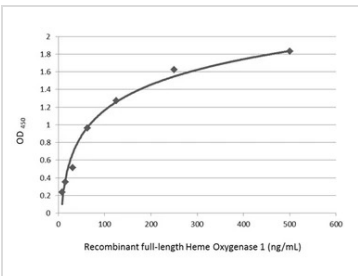

GTX101147 IHC-P Image

Heme Oxygenase 1 antibody detects Heme Oxygenase 1 protein at cytoplasm by immunohistochemical analysis.

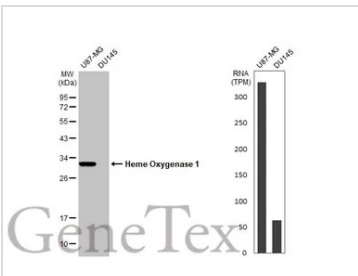
Sample: Paraffin-embedded mouse spleen.

Heme Oxygenase 1 stained by Heme Oxygenase 1 antibody (GTX101147) diluted at 1:500.

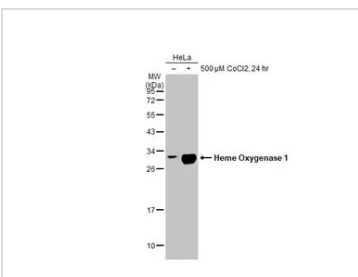
Antigen Retrieval: Citrate buffer, pH 6.0, 15 min


GTX101147 ELISA Image

Sandwich ELISA detection of recombinant full-length Heme Oxygenase 1 protein using GTX633677 as capture antibody at concentration of 5 µg/mL and GTX101147 as detection antibody at concentration of 1 µg/mL. Rabbit IgG antibody (HRP) (GTX213110-01) was diluted at 1:10000 and used to detect the primary antibody.


GTX101147 WB Image

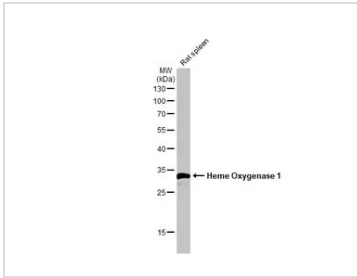
Various whole cell extracts (30 µg) were separated by 12% SDS-PAGE, and the membrane was blotted with Heme Oxygenase 1 antibody (GTX101147) diluted at 1:1000. The HRP-conjugated anti-rabbit IgG antibody (GTX213110-01) was used to detect the primary antibody. Corresponding RNA expression data for the same cell lines are based on Human Protein Atlas program.


GTX101147 WB Image

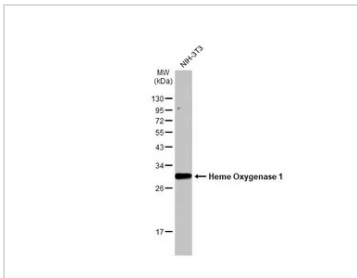
Untreated (-) and treated (+) HeLa whole cell extracts (30 µg) were separated by 12% SDS-PAGE, and the membrane was blotted with Heme Oxygenase 1 antibody (GTX101147) diluted at 1:5000. The HRP-conjugated anti-rabbit IgG antibody (GTX213110-01) was used to detect the primary antibody.



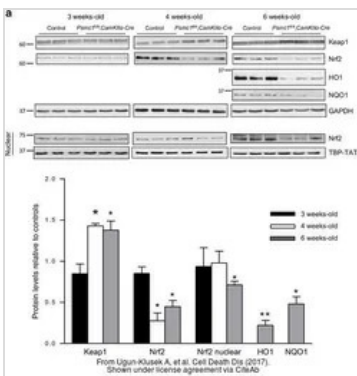
For full product information, images and publications, please visit our [website](https://www.genetex.com).


GTXT101147 WB Image

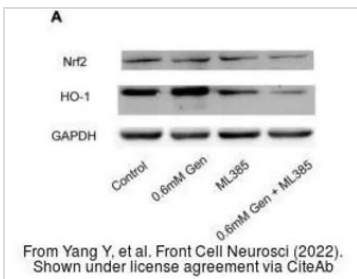
Rat tissue extract (50 µg) was separated by 12% SDS-PAGE, and the membrane was blotted with Heme Oxygenase 1 antibody (GTXT101147) diluted at 1:1000. The HRP-conjugated anti-rabbit IgG antibody (GTXT213110-01) was used to detect the primary antibody.


GTXT101147 WB Image

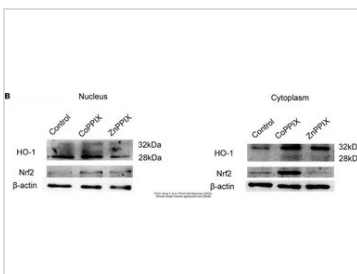
Whole cell extract (30 µg) was separated by 12% SDS-PAGE, and the membrane was blotted with Heme Oxygenase 1 antibody (GTXT101147) diluted at 1:1000. The HRP-conjugated anti-rabbit IgG antibody (GTXT213110-01) was used to detect the primary antibody.


GTXT101147 WB Image

The data was published in the journal Cell Death Dis in 2017. [PMID: 28055010](https://pubmed.ncbi.nlm.nih.gov/28055010/)


GTXT101147 WB Image

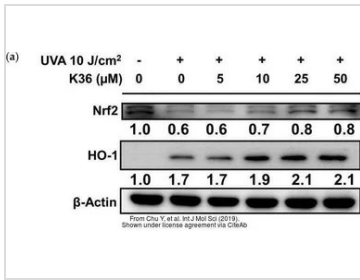
The data was published in the 2022 in Front Cell Neurosci. [PMID: 35496911](https://pubmed.ncbi.nlm.nih.gov/35496911/)


GTXT101147 WB Image

The data was published in the 2022 in Front Cell Neurosci. [PMID: 35496911](https://pubmed.ncbi.nlm.nih.gov/35496911/)

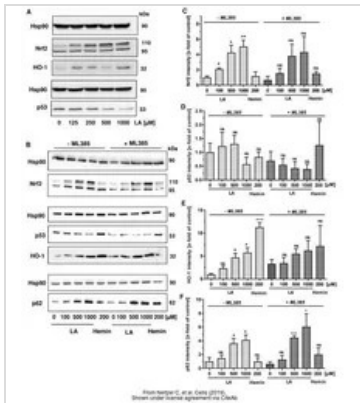


For full product information, images and publications, please visit our [website](https://www.genetex.com).



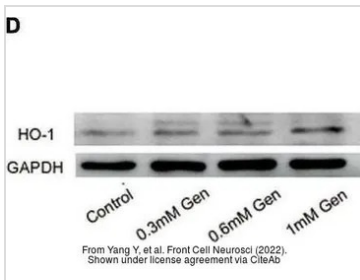
GTXT101147 WB Image

The data was published in the journal Int J Mol Sci in 2019. [PMID: 30621167](#)



GTXT101147 WB Image

The data was published in the journal Cells in 2019. [PMID: 31366086](#)



GTXT101147 WB Image

The data was published in the journal Front Cell Neurosci. [PMID: 35496911](#)



For full product information, images and publications, please visit our [website](#).

NFkB p105 antibody

Cat. No. GTX110585

Host	Rabbit
Clonality	Polyclonal
Isotype	IgG
Application	WB, ICC/IF, IHC-P, ChIP assay, IHC
Reactivity	Human, Mouse, Dog

Reference (2)
Package
100 µl, 25 µl

APPLICATION

Application Note

*Optimal dilutions/concentrations should be determined by the researcher.

Suggested dilution	Recommended dilution
WB	1:500-1:3000
ICC/IF	1:100-1:1000
IHC-P	1:100-1:1000
ChIP assay	Assay dependent
IHC	Assay dependent

Not tested in other applications.

Calculated MW 105 kDa. ([Note](#))

PROPERTIES

Form	Liquid
Buffer	0.1M Tris, 0.1M Glycine, 10% Glycerol
Preservative	0.01% Thimerosal
Storage	Store as concentrated solution. Centrifuge briefly prior to opening vial. For short-term storage (1-2 weeks), store at 4°C. For long-term storage, aliquot and store at -20°C or below. Avoid multiple freeze-thaw cycles.
Concentration	1 mg/ml (Please refer to the vial label for the specific concentration.)
Immunogen	Recombinant protein encompassing a sequence within the center region of human NFkB p105. The exact sequence is proprietary.
Purification	Purified by antigen-affinity chromatography.
Conjugation	Unconjugated



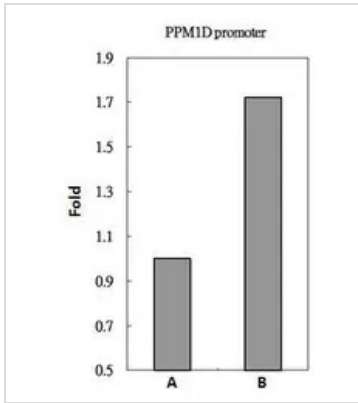
For full product information, images and publications, please visit our [website](#).

For laboratory research use only. Not for any clinical, therapeutic, or diagnostic use in humans or animals. Not for animal or human consumption.

Note

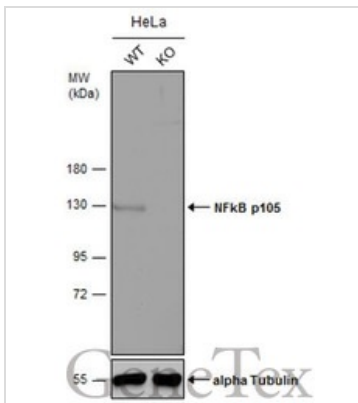
Purchasers shall not, and agree not to enable third parties to, analyze, copy, reverse engineer or otherwise attempt to determine the structure or sequence of the product.

DATA IMAGES



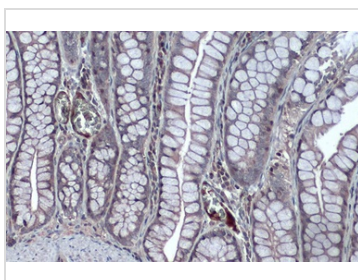
GTX110585 ChIP assay Image

NFκB p105 antibody immunoprecipitates NFκB p105 protein-DNA in ChIP experiments. ChIP Sample: 293T whole cell lysate/extract A. 5 μg preimmune rabbit IgG B. 5 μg of NFκB p105 antibody (GTX110585) The precipitated DNA was detected by PCR with primer set targeting to PPM1D promoter.



GTX110585 WB Image

Wild-type (WT) and NFκB p105 knockout (KO) HeLa cell extracts (30 μg) were separated by 7.5% SDS-PAGE, and the membrane was blotted with NFκB p105 antibody (GTX110585) diluted at 1:1000. The HRP-conjugated anti-rabbit IgG antibody (GTX213110-01) was used to detect the primary antibody.



GTX110585 IHC-P Image

NFκB p105 antibody detects secreted NFκB p105 protein by immunohistochemical analysis.

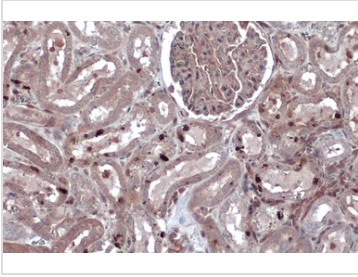
Sample: Paraffin-embedded dog colon.

NFκB p105 stained by NFκB p105 antibody (GTX110585) diluted at 1:500.

Antigen Retrieval: Citrate buffer, pH 6.0, 15 min



For full product information, images and publications, please visit our [website](https://www.genetex.com).

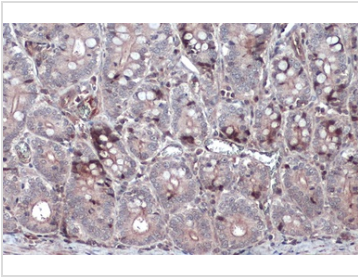

GTK110585 IHC-P Image

NFkB p105 antibody detects NFkB p105 protein at cytoplasm by immunohistochemical analysis.

Sample: Paraffin-embedded dog kidney.

NFkB p105 stained by NFkB p105 antibody (GTK110585) diluted at 1:500.

Antigen Retrieval: Citrate buffer, pH 6.0, 15 min

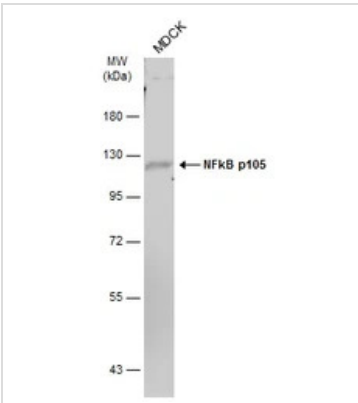

GTK110585 IHC-P Image

NFkB p105 antibody detects NFkB p105 protein at cytoplasm by immunohistochemical analysis.

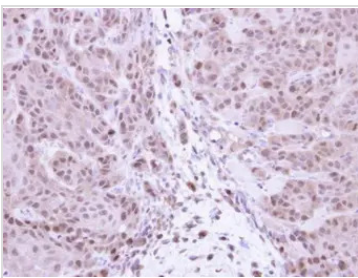
Sample: Paraffin-embedded dog intestine.

NFkB p105 stained by NFkB p105 antibody (GTK110585) diluted at 1:500.

Antigen Retrieval: Citrate buffer, pH 6.0, 15 min


GTK110585 WB Image

Whole cell extract (30 µg) was separated by 7.5% SDS-PAGE, and the membrane was blotted with NFkB p105 antibody (GTK110585) diluted at 1:1000. The HRP-conjugated anti-rabbit IgG antibody (GTK213110-01) was used to detect the primary antibody.

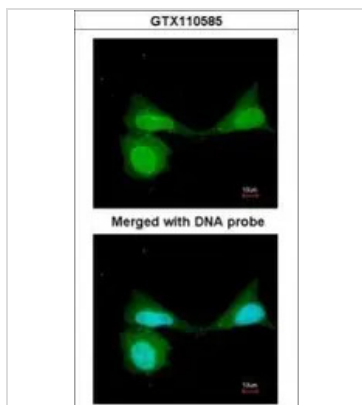

GTK110585 IHC-P Image

Immunohistochemical analysis of paraffin-embedded Cal27 xenograft, using NFkB p105 (GTK110585) antibody at 1:100 dilution.

Antigen Retrieval: Trilogy™ (EDTA based, pH 8.0) buffer, 15min

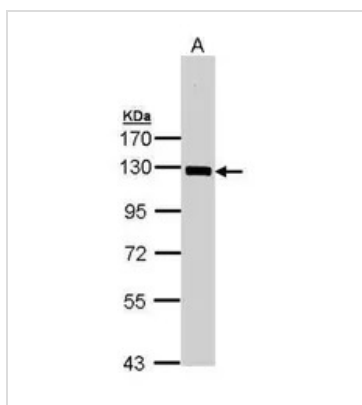


For full product information, images and publications, please visit our [website](#).



GTX110585 ICC/IF Image

Immunofluorescence analysis of paraformaldehyde-fixed HeLa, using NFkB p105(GTX110585) antibody at 1:200 dilution.



GTX110585 WB Image

Sample (30 ug of whole cell lysate)

A: A431 (GTX27909)

7.5% SDS PAGE

GTX110585 diluted at 1:1000



For full product information, images and publications, please visit our [website](https://www.genetex.com).

ARD1A antibody

Cat. No. GTX125971

Host	Rabbit
Clonality	Polyclonal
Isotype	IgG
Application	WB, ICC/IF, IHC-P, IP
Reactivity	Human, Mouse

Reference (3)

Package

100 µl, 25 µl

APPLICATION

Application Note

*Optimal dilutions/concentrations should be determined by the researcher.

Suggested dilution	Recommended dilution
WB	1:500-1:10000
ICC/IF	1:100-1:1000
IHC-P	1:100-1:1000
IP	1:100-1:500

Not tested in other applications.

Calculated MW 26 kDa. ([Note](#))

PROPERTIES

Form	Liquid
Buffer	0.1M Tris, 0.1M Glycine, 20% Glycerol
Preservative	0.01% Thimerosal
Storage	Store as concentrated solution. Centrifuge briefly prior to opening vial. For short-term storage (1-2 weeks), store at 4°C. For long-term storage, aliquot and store at -20°C or below. Avoid multiple freeze-thaw cycles.
Concentration	0.73 mg/ml (Please refer to the vial label for the specific concentration.)
Immunogen	Full length human ARD1A Recombinant protein.
Purification	Purified by antigen-affinity chromatography.
Conjugation	Unconjugated

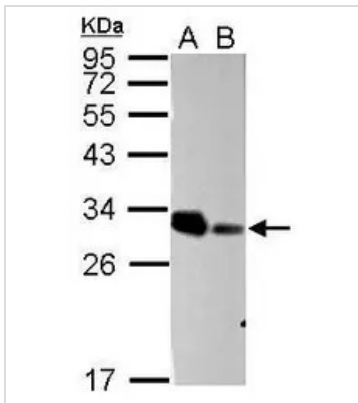
Note

For laboratory research use only. Not for any clinical, therapeutic, or diagnostic use in humans or animals. Not for animal or human consumption.

Purchasers shall not, and agree not to enable third parties to, analyze, copy, reverse engineer or otherwise attempt to determine the structure or sequence of the product.



For full product information, images and publications, please visit our [website](#).

DATA IMAGES

GTX125971 WB Image

Sample (30 µg of whole cell lysate)

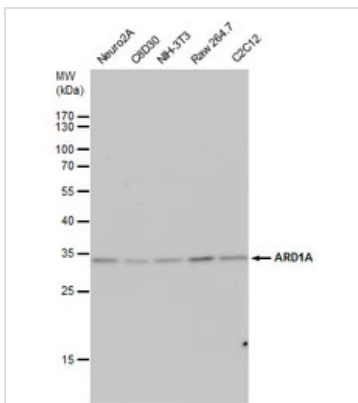
A: H1299 transfected scramble siRNA

B: H1299 transfected ARDIA siRNA

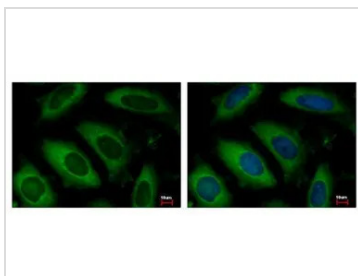
12% SDS PAGE

GTX125971 diluted at 1:5000

The HRP-conjugated anti-rabbit IgG antibody (GTX213110-01) was used to detect the primary antibody.


GTX125971 WB Image

ARD1A antibody detects ARD1A protein by western blot analysis. Various whole cell extracts (30 µg) were separated by 12% SDS-PAGE, and blotted with ARD1A antibody (GTX125971) diluted by 1:1000. The HRP-conjugated anti-rabbit IgG antibody (GTX213110-01) was used to detect the primary antibody.

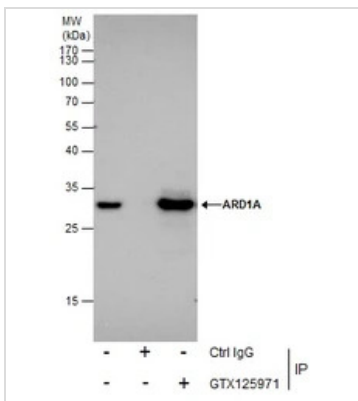

GTX125971 ICC/IF Image

ARD1A antibody detects NAA10 protein at Cytoplasm by immunofluorescent analysis.

Sample: HeLa cells were fixed in -20°C 100% MeOH for 5 min.

Green: NAA10 protein stained by ARD1A antibody (GTX125971) diluted at 1:500.

Blue: Hoechst 33343 staining.


GTX125971 IP Image

Immunoprecipitation of ARD1A protein from HeLa whole cell extracts using 5 µg of ARD1A antibody (GTX125971).

Western blot analysis was performed using ARD1A antibody (GTX125971) diluted at 1:500.

EasyBlot anti-Rabbit IgG (GTX221666-01) was used as a secondary reagent.



For full product information, images and publications, please visit our [website](https://www.genetex.com).



GTX125971 IHC-P Image

Immunohistochemical analysis of paraffin-embedded PC13 xenograft, using ARD1A(GTX125971) antibody at 1:500 dilution.

Antigen Retrieval: Trilogy™ (EDTA based, pH 8.0) buffer, 15min



For full product information, images and publications, please visit our [website](#).

HIF1 alpha antibody

Cat. No. GTX127309

Host	Rabbit
Clonality	Polyclonal
Isotype	IgG
Application	WB, ICC/IF, IHC-P, IHC-Fr, IP, ChIP assay
Reactivity	Human, Mouse, Rat, Rabbit, Bovine

Reference (179)

★★★★★ Review (24)

Package

100 µl, 25 µl

PRODUCT

Summary

HIF1 alpha antibody recognizes HIF1 alpha (HIF1a) protein, which is a subunit of the heterodimeric transcription factor hypoxia-inducible factor-1 (HIF-1). HIF-1 is a master regulator of homeostatic adaption to hypoxia (low oxygen supply) in various physiological and pathological conditions including normal development and cancer.

APPLICATION

Application Note

*Optimal dilutions/concentrations should be determined by the researcher.

Suggested dilution	Recommended dilution
WB	1:500-1:3000
ICC/IF	1:100-1:1000
IHC-P	1:100-1:1000
IHC-Fr	Assay dependent
IP	1:100-1:570
ChIP assay	Assay dependent

Not tested in other applications.

Calculated MW

93 kDa. ([Note](#))

Product Note

Knockdown/Knockout validation was supported by references (PMID:25428606)

PROPERTIES

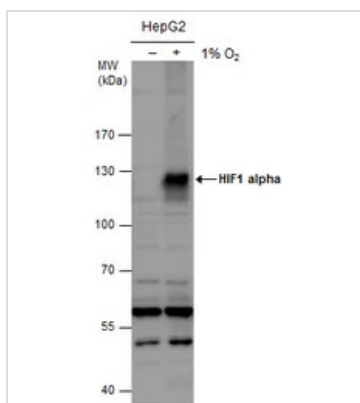
Form	Liquid
Buffer	PBS, 20% Glycerol
Preservative	0.025% ProClin 300
Storage	Store as concentrated solution. Centrifuge briefly prior to opening vial. For short-term storage (1-2 weeks), store at 4°C. For long-term storage, aliquot and store at -20°C or below. Avoid multiple freeze-thaw cycles.
Concentration	1.27 mg/ml (Please refer to the vial label for the specific concentration.)



For full product information, images and publications, please visit our [website](#).

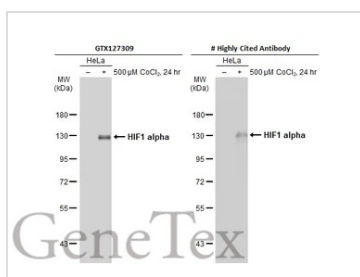
Immunogen	Recombinant protein encompassing a sequence within the C-terminus region of human HIF1 alpha. The exact sequence is proprietary.
Purification	Purified by antigen-affinity chromatography.
Conjugation	Unconjugated
Note	For laboratory research use only. Not for any clinical, therapeutic, or diagnostic use in humans or animals. Not for animal or human consumption. Purchasers shall not, and agree not to enable third parties to, analyze, copy, reverse engineer or otherwise attempt to determine the structure or sequence of the product.

DATA IMAGES



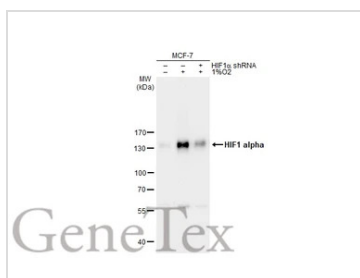
GTX127309 WB Image

HIF1 alpha antibody detects HIF1 alpha protein by western blot analysis. Un-treated (-) and treated (+, 1% O₂ treatment for 24hr) HepG2 whole cell extracts (30 µg) were separated by 7.5% SDS-PAGE, and the membrane was blotted with HIF1 alpha antibody (GTX127309) diluted at 1:1000. The HRP-conjugated anti-rabbit IgG antibody (GTX213110-01) was used to detect the primary antibody.



GTX127309 WB Image

Untreated (-) and treated (+) HeLa whole cell extracts (30 µg) were separated by 7.5% SDS-PAGE, and the membrane was blotted with HIF1 alpha antibody (GTX127309) diluted at 1:1000. The HRP-conjugated anti-rabbit IgG antibody (GTX213110-01) was used to detect the primary antibody.

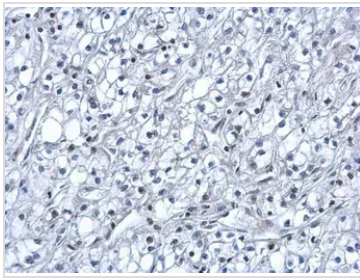


GTX127309 WB Image

Untreated (-) and treated (+) MCF-7 whole cell extracts (30 µg) were separated by 7.5% SDS-PAGE, and the membrane was blotted with HIF1 alpha antibody (GTX127309) diluted at 1:1000. The HRP-conjugated anti-rabbit IgG antibody (GTX213110-01) was used to detect the primary antibody.



For full product information, images and publications, please visit our [website](https://www.genetex.com).

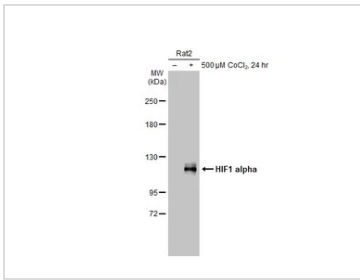


GTX127309 IHC-P Image

HIF1 alpha antibody detects HIF1 alpha protein at nucleus on human kidney cancer by immunohistochemical analysis.

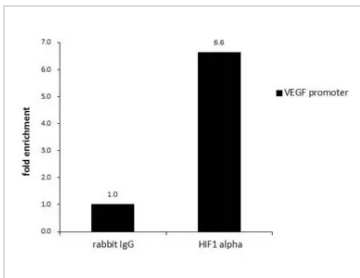
Sample: Paraffin-embedded human kidney cancer.

HIF1 alpha antibody (GTX127309) dilution: 1:500.



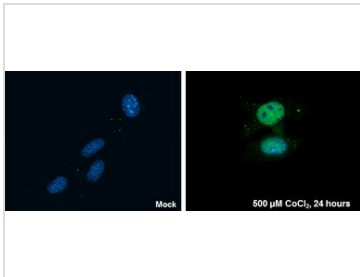
GTX127309 WB Image

Untreated (–) and treated (+) Rat-2 whole cell extracts (30 μg) were separated by 5% SDS-PAGE, and the membrane was blotted with HIF1 alpha antibody (GTX127309) diluted at 1:1000. The HRP-conjugated anti-rabbit IgG antibody (GTX213110-01) was used to detect the primary antibody, and the signal was developed with Trident ECL plus-Enhanced.



GTX127309 ChIP assay Image

ChIP was performed with HepG2 chromatin extract and 5 μg of either normal rabbit IgG or anti-HIF1 alpha antibody. The precipitated DNA was detected by PCR with primer set targeting to VEGF promoter.



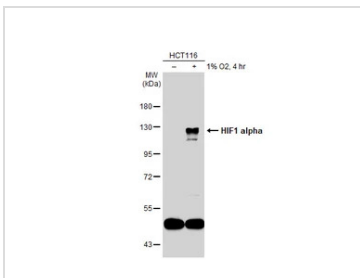
GTX127309 ICC/IF Image

HIF1 alpha antibody detects HIF1 alpha protein at nucleus by immunofluorescent analysis.

Sample: NIH/3T3 cells were fixed in 4% paraformaldehyde at RT for 15 min.

Green: HIF1 alpha protein stained by HIF1 alpha antibody (GTX127309) diluted at 1:200.

Blue: Hoechst 33342 staining.

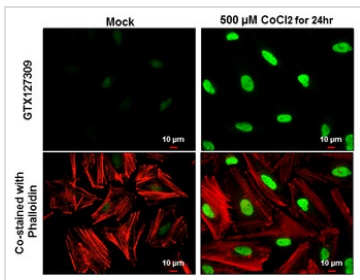


GTX127309 WB Image

Untreated (–) and treated (+) HCT116 whole cell extracts (30 μg) were separated by 7.5% SDS-PAGE, and the membrane was blotted with HIF1 alpha antibody (GTX127309) diluted at 1:1000. The HRP-conjugated anti-rabbit IgG antibody (GTX213110-01) was used to detect the primary antibody.



For full product information, images and publications, please visit our [website](https://www.genetex.com).



GTX127309 ICC/IF Image

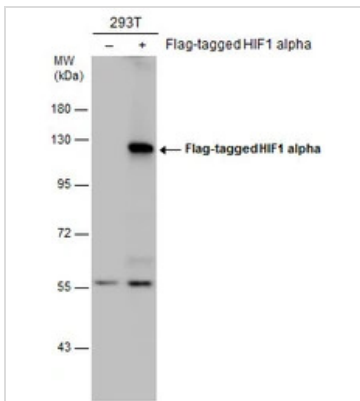
HIF1 alpha antibody detects HIF1 alpha protein at nucleus by immunofluorescent analysis.

Sample: HeLa cells were fixed in 4% paraformaldehyde at RT for 15 min.

Green: HIF1 alpha protein stained by HIF1 alpha antibody (GTX127309) diluted at 1:500.

Red: Phalloidin, a cytoskeleton marker, diluted at 1:100.

Scale bar = 10 μm.

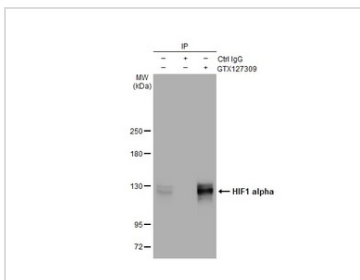


GTX127309 WB Image

Non-transfected (–) and transfected (+) 293T whole cell extracts (30 μg) were separated by 7.5% SDS-PAGE,

and the membrane was blotted with HIF1 alpha antibody (GTX127309) diluted at 1:5000. The HRP-

conjugated anti-rabbit IgG antibody (GTX213110-01) was used to detect the primary antibody.

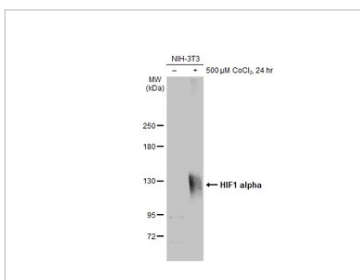


GTX127309 IP Image

Immunoprecipitation of HIF1 alpha protein from HeLa whole cell extracts treated with 500 μM CoCl₂ for 24 hr using 5 μg of HIF1 alpha antibody (GTX127309).

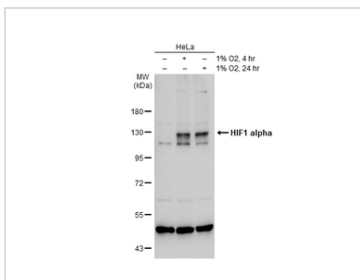
Western blot analysis was performed using HIF1 alpha antibody (GTX127309).

EasyBlot HRP-conjugated anti rabbit IgG antibody (GTX221666-01) was used to detect the primary antibody.



GTX127309 WB Image

Untreated (–) and treated (+) NIH-3T3 whole cell extracts (30 μg) were separated by 5% SDS-PAGE, and the membrane was blotted with HIF1 alpha antibody (GTX127309) diluted at 1:1000. The HRP-conjugated anti-rabbit IgG antibody (GTX213110-01) was used to detect the primary antibody.

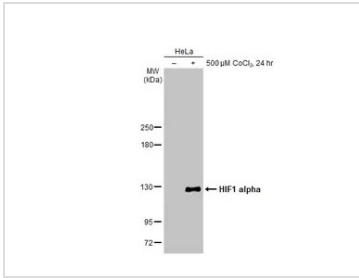


GTX127309 WB Image

Untreated (–) and treated (+) HeLa whole cell extracts (30 μg) were separated by 7.5% SDS-PAGE, and the membrane was blotted with HIF1 alpha antibody (GTX127309) diluted at 1:1000. The HRP-conjugated anti-rabbit IgG antibody (GTX213110-01) was used to detect the primary antibody.

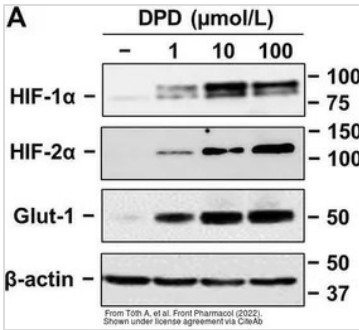


For full product information, images and publications, please visit our [website](https://www.genetex.com).



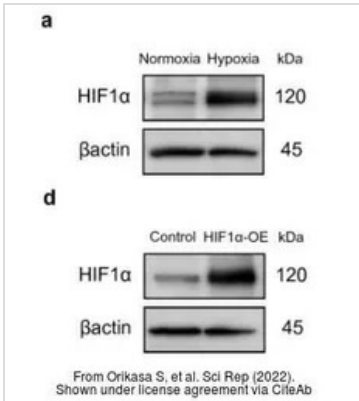
GTx127309 WB Image

Untreated (-) and treated (+) HeLa whole cell extracts (30 μg) were separated by 5% SDS-PAGE, and the membrane was blotted with HIF1 alpha antibody (GTx127309) diluted at 1:1000. The HRP-conjugated anti-rabbit IgG antibody (GTx213110-01) was used to detect the primary antibody, and the signal was developed with Trident ECL plus-Enhanced.



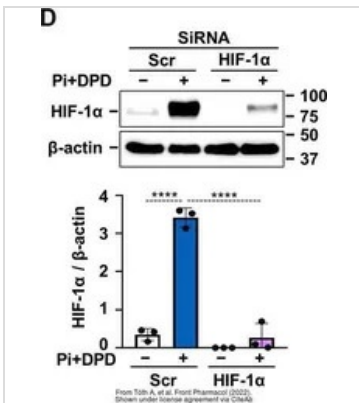
GTx127309 WB Image

The data was published in the 2022 in Front Pharmacol. [PMID: 35222025](https://pubmed.ncbi.nlm.nih.gov/35222025/)



GTx127309 WB Image

The data was published in the 2022 in Sci Rep. [PMID: 35027586](https://pubmed.ncbi.nlm.nih.gov/35027586/)

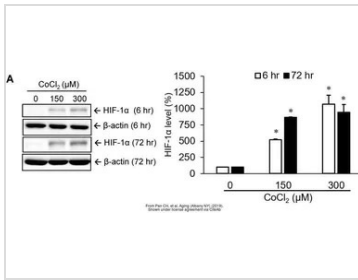


GTx127309 WB Image

The data was published in the 2022 in Front Pharmacol. [PMID: 35222025](https://pubmed.ncbi.nlm.nih.gov/35222025/)

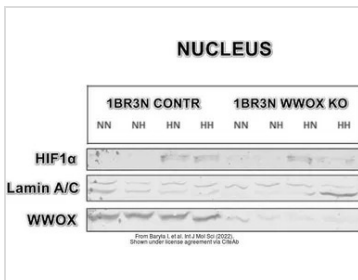


For full product information, images and publications, please visit our [website](https://www.genetex.com).



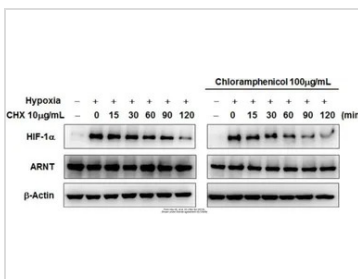
GTX127309 WB Image

The data was published in the 2019 in Aging (Albany NY). [PMID: 31584878](#)



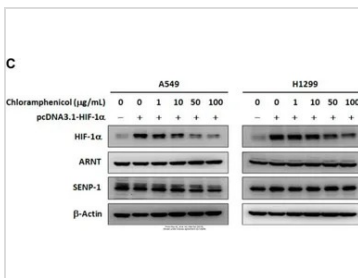
GTX127309 WB Image

The data was published in the 2022 in Int J Mol Sci. [PMID: 35328751](#)



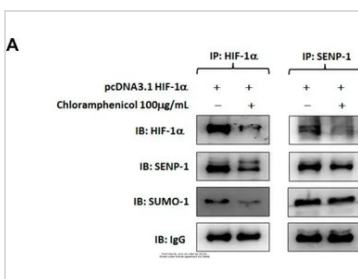
GTX127309 WB Image

The data was published in the 2019 in Int J Mol Sci. [PMID: 30609861](#)



GTX127309 WB Image

The data was published in the 2019 in Int J Mol Sci. [PMID: 30609861](#)

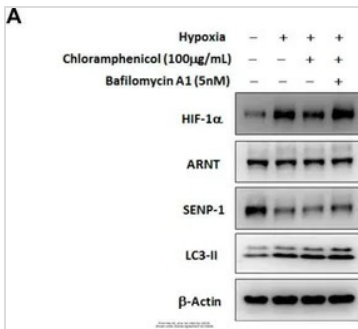


GTX127309 IP Image

The data was published in the 2019 in Int J Mol Sci. [PMID: 30609861](#)

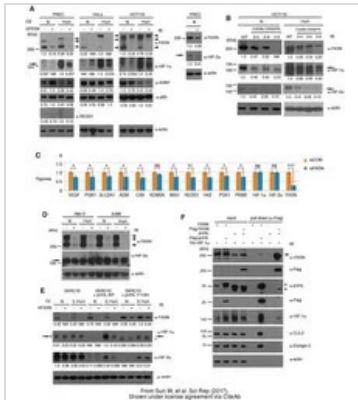


For full product information, images and publications, please visit our [website](#).



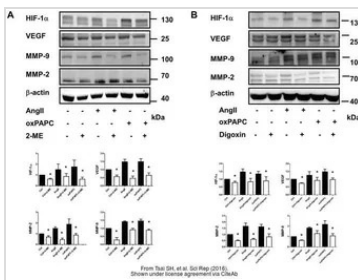
GTx127309 WB Image

The data was published in the 2019 in Int J Mol Sci. [PMID: 30609861](#)



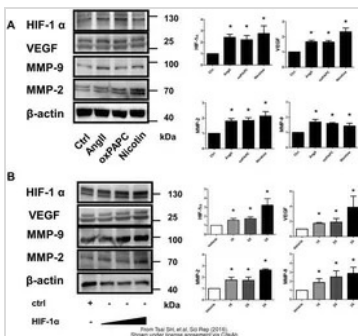
GTx127309 WB Image

The data was published in the journal Sci Rep in 2017. [PMID: 28775317](#)



GTx127309 WB Image

The data was published in the journal Sci Rep in 2016. [PMID: 27363580](#)

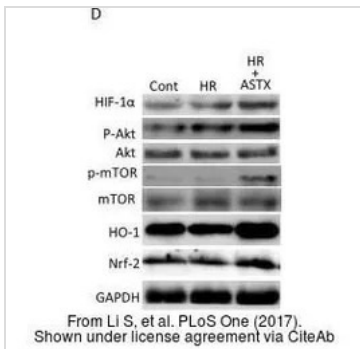


GTx127309 WB Image

The data was published in the journal Sci Rep in 2016. [PMID: 27363580](#)

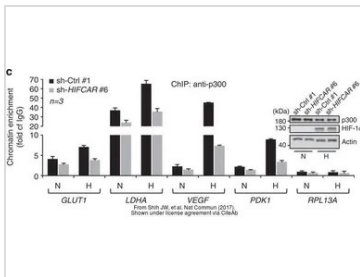


For full product information, images and publications, please visit our [website](#).



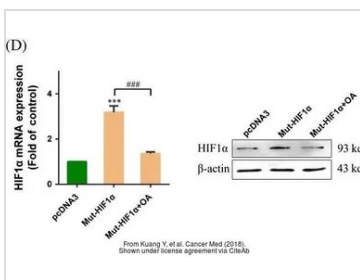
GTx127309 WB Image

The data was published in the journal PLoS One in 2017. [PMID: 29121675](https://pubmed.ncbi.nlm.nih.gov/29121675/)



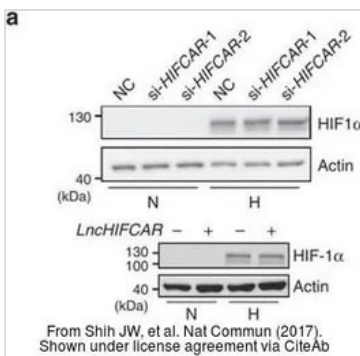
GTx127309 WB Image

The data was published in the journal Nat Commun in 2017. [PMID: 28639619](https://pubmed.ncbi.nlm.nih.gov/28639619/)



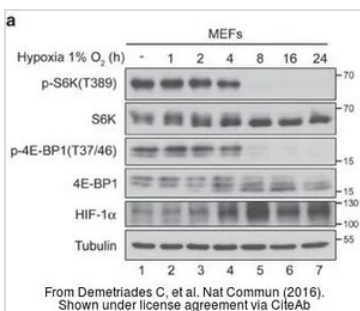
GTx127309 WB Image

The data was published in the journal Cancer Med in 2018. [PMID: 29533007](https://pubmed.ncbi.nlm.nih.gov/29533007/)



GTx127309 WB Image

The data was published in the journal Nat Commun in 2017. [PMID: 28639619](https://pubmed.ncbi.nlm.nih.gov/28639619/)

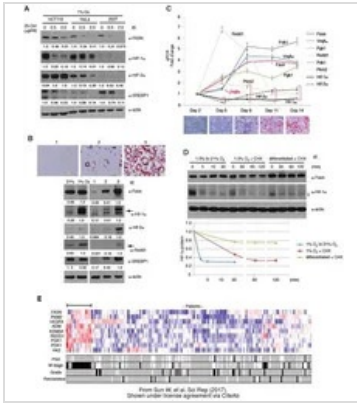


GTx127309 WB Image

The data was published in the journal Nat Commun in 2016. [PMID: 26868506](https://pubmed.ncbi.nlm.nih.gov/26868506/)

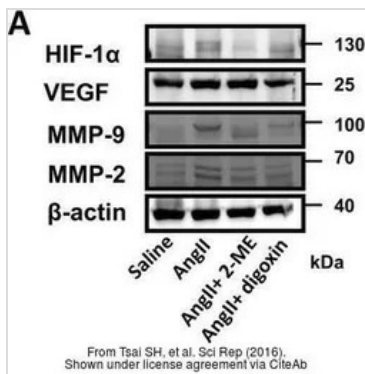


For full product information, images and publications, please visit our [website](https://www.genetex.com).



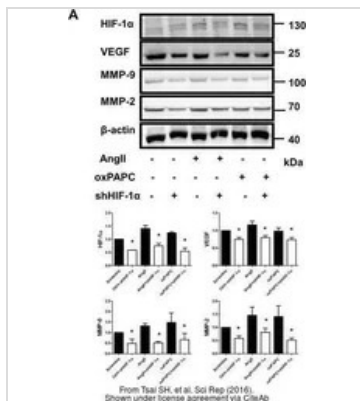
GTX127309 WB Image

The data was published in the journal Sci Rep in 2017. [PMID: 28775317](#)



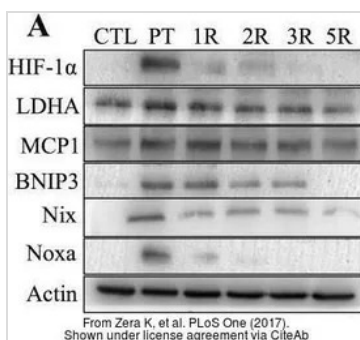
GTX127309 WB Image

The data was published in the journal Sci Rep in 2016. [PMID: 27363580](#)



GTX127309 WB Image

The data was published in the journal Sci Rep in 2016. [PMID: 27363580](#)

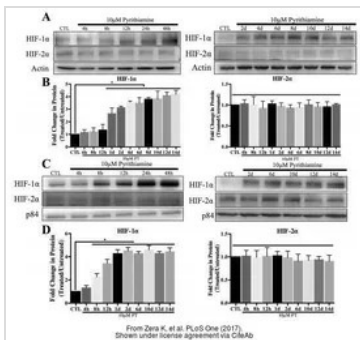


GTX127309 WB Image

The data was published in the journal PLoS One in 2017. [PMID: 29045486](#)

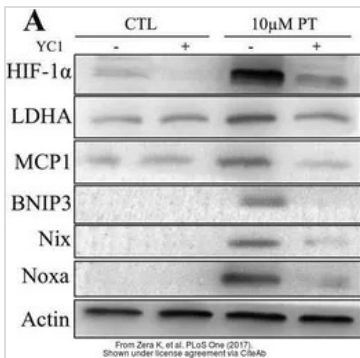


For full product information, images and publications, please visit our [website](#).



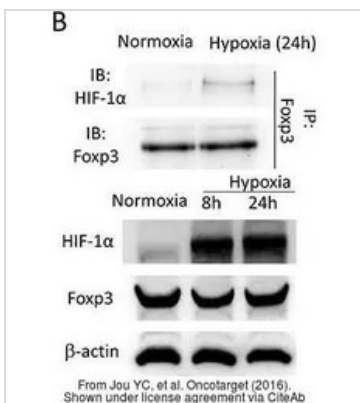
GTx127309 WB Image

The data was published in the journal PLoS One in 2017. [PMID: 29045486](#)



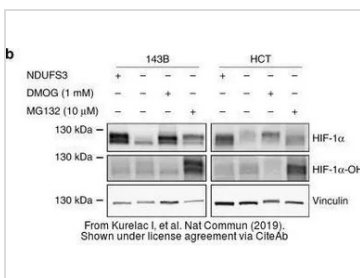
GTx127309 WB Image

The data was published in the journal PLoS One in 2017. [PMID: 29045486](#)



GTx127309 WB Image

The data was published in the journal Oncotarget in 2016. [PMID: 27557492](#)

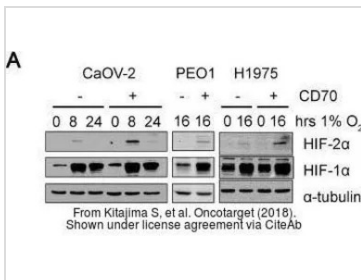


GTx127309 WB Image

The data was published in the journal Nat Commun in 2019. [PMID: 30796225](#)

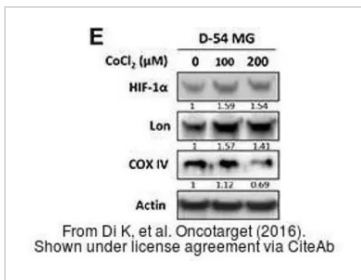


For full product information, images and publications, please visit our [website](#).



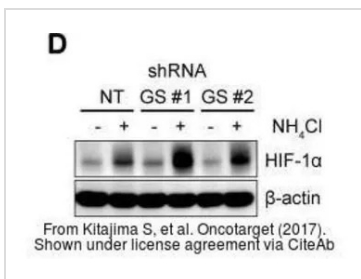
GTx127309 WB Image

The data was published in the journal Oncotarget in 2018. [PMID: 29721188](#)



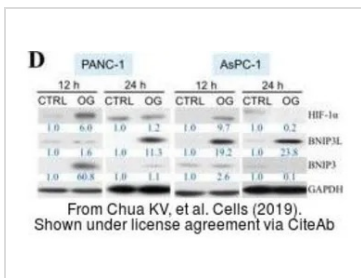
GTx127309 WB Image

The data was published in the journal Oncotarget in 2016. [PMID: 27764809](#)



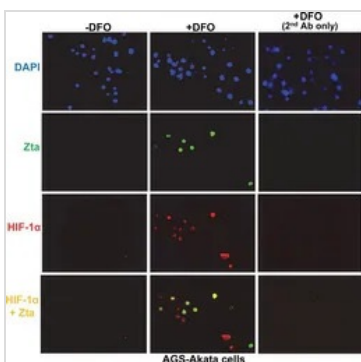
GTx127309 WB Image

The data was published in the journal Oncotarget in 2017. [PMID: 29383096](#)



GTx127309 WB Image

The data was published in the journal Cells in 2019. [PMID: 31905895](#)

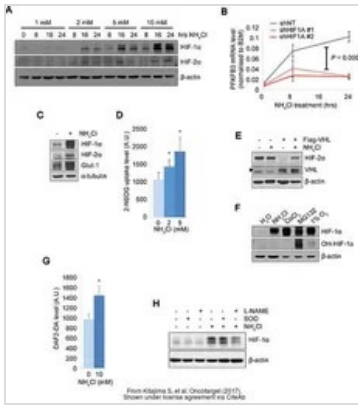


GTx127309 ICC/IF Image

The data was published in the journal PLoS Pathog in 2017. [PMID: 28617871](#)

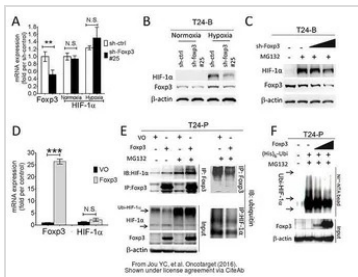


For full product information, images and publications, please visit our [website](#).



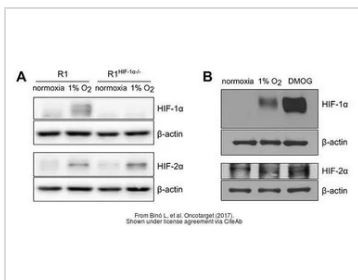
GTX127309 WB Image

The data was published in the journal Oncotarget in 2017. [PMID: 29383096](#)



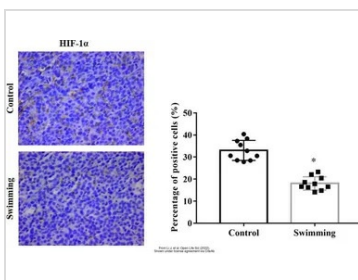
GTX127309 WB Image

The data was published in the journal Oncotarget in 2016. [PMID: 27557492](#)



GTX127309 WB Image

The data was published in the journal Oncotarget in 2017. [PMID: 29137374](#)

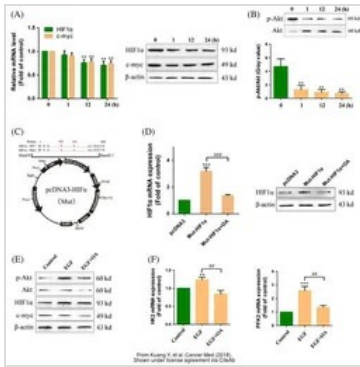


GTX127309 IHC-P Image

The data was published in the 2022 in Open Life Sci. [PMID: 35291563](#)

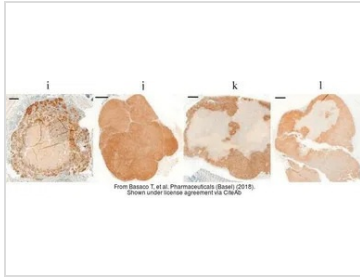


For full product information, images and publications, please visit our [website](#).



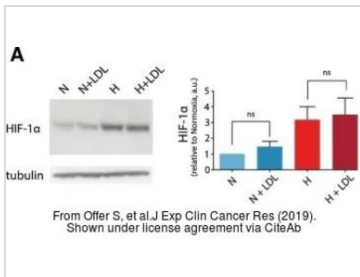
GTX127309 WB Image

The data was published in the journal Cancer Med in 2018. [PMID: 29533007](https://pubmed.ncbi.nlm.nih.gov/29533007/)



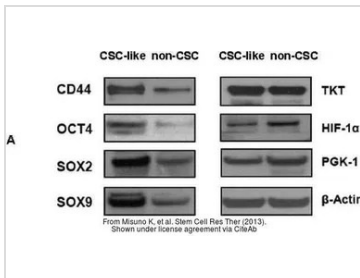
GTX127309 IHC-P Image

The data was published in the journal Pharmaceuticals (Basel) in 2018. [PMID: 30487460](https://pubmed.ncbi.nlm.nih.gov/30487460/)



GTX127309 WB Image

The data was published in the journal J Exp Clin Cancer Res in 2019. [PMID: 31174567](https://pubmed.ncbi.nlm.nih.gov/31174567/)

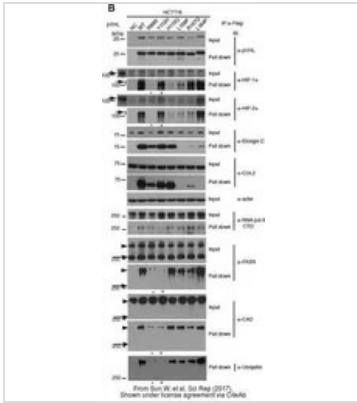


GTX127309 WB Image

The data was published in the journal Stem Cell Res Ther in 2013. [PMID: 24423398](https://pubmed.ncbi.nlm.nih.gov/24423398/)

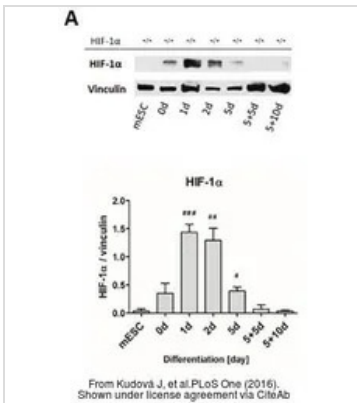


For full product information, images and publications, please visit our [website](https://www.genetex.com).



GTX127309 WB Image

The data was published in the journal Sci Rep in 2017. [PMID: 28775317](https://pubmed.ncbi.nlm.nih.gov/28775317/)



GTX127309 WB Image

The data was published in the journal PLoS One in 2016. [PMID: 27355368](https://pubmed.ncbi.nlm.nih.gov/27355368/)



For full product information, images and publications, please visit our [website](https://www.genetex.com).

Twist1/2 antibody

Cat. No. GTX127310

Host	Rabbit
Clonality	Polyclonal
Isotype	IgG
Application	WB, IHC-P, IHC
Reactivity	Human, Mouse, Rat, Drosophila

Reference (66)

★★★★★ Review (12)

Package

100 µl, 25 µl

APPLICATION

Application Note

*Optimal dilutions/concentrations should be determined by the researcher.

Suggested dilution	Recommended dilution
WB	1:500-1:10000
IHC-P	1:100-1:1000
IHC	Assay dependent

Not tested in other applications.

Calculated MW 21 kDa. ([Note](#))

PROPERTIES

Form	Liquid
Buffer	PBS, 20% Glycerol
Preservative	0.025% ProClin 300
Storage	Store as concentrated solution. Centrifuge briefly prior to opening vial. For short-term storage (1-2 weeks), store at 4°C. For long-term storage, aliquot and store at -20°C or below. Avoid multiple freeze-thaw cycles.
Concentration	0.67 mg/ml (Please refer to the vial label for the specific concentration.)
Immunogen	Recombinant protein encompassing a sequence within the center region of human Twist1/2. The exact sequence is proprietary.
Purification	Purified by antigen-affinity chromatography.
Conjugation	Unconjugated

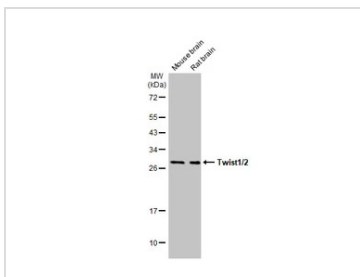
Note

For laboratory research use only. Not for any clinical, therapeutic, or diagnostic use in humans or animals. Not for animal or human consumption.

Purchasers shall not, and agree not to enable third parties to, analyze, copy, reverse engineer or otherwise attempt to determine the structure or sequence of the product.



For full product information, images and publications, please visit our [website](#).

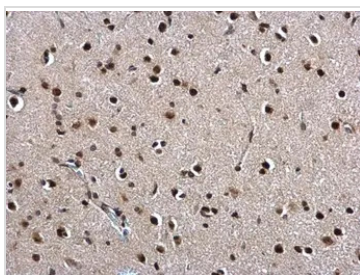
DATA IMAGES

GTx127310 WB Image

Various tissue extracts (50 µg) were separated by 12% SDS-PAGE, and the membrane was blotted with Twist1/2 antibody (GTx127310) diluted at 1:1000. The HRP-conjugated anti-rabbit IgG antibody (GTx213110-01) was used to detect the primary antibody.


GTx127310 IHC-P Image

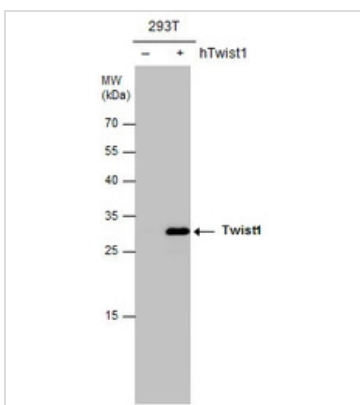
Twist1/2 antibody detects Twist1/2 protein at nucleus on mouse prostate by immunohistochemical analysis.
Sample: Paraffin-embedded mouse prostate.
Twist1/2 antibody (GTx127310) dilution: 1:500.

Antigen Retrieval: Trilogy™ (EDTA based, pH 8.0) buffer, 15min


GTx127310 IHC-P Image

Twist1/2 antibody detects Twist1/2 protein at nucleus on rat fore brain by immunohistochemical analysis.
Sample: Paraffin-embedded rat fore brain.
Twist1/2 antibody (GTx127310) dilution: 1:500.

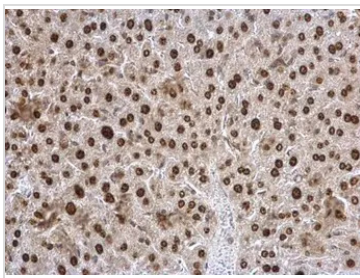
Antigen Retrieval: Trilogy™ (EDTA based, pH 8.0) buffer, 15min


GTx127310 WB Image

Twist1/2 antibody detects Twist1 protein by western blot analysis. Non-transfected (-) and Twist1-transfected (+) 293T whole cell extracts (30 µg) were separated by 12% SDS-PAGE, and the membrane was blotted with Twist1/2 antibody (GTx127310) diluted at 1:5000. The HRP-conjugated anti-rabbit IgG antibody (GTx213110-01) was used to detect the primary antibody.



For full product information, images and publications, please visit our [website](https://www.genetex.com).



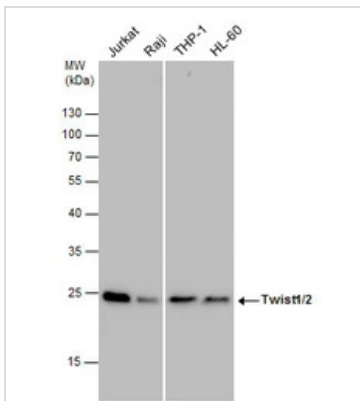
GTx127310 IHC-P Image

Twist1/2 antibody detects Twist1/2 protein at nucleus on mouse liver by immunohistochemical analysis.

Sample: Paraffin-embedded mouse liver.

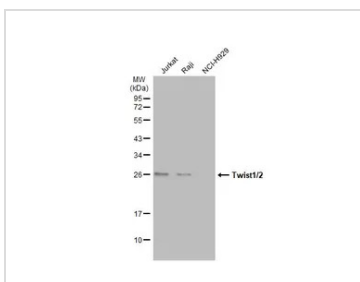
Twist1/2 antibody (GTx127310) dilution: 1:500.

Antigen Retrieval: Trilogy™ (EDTA based, pH 8.0) buffer, 15min



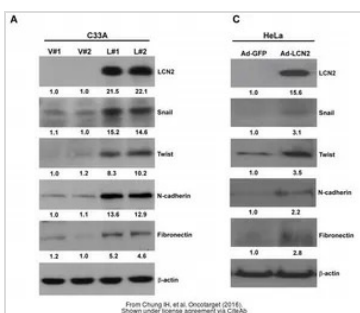
GTx127310 WB Image

Twist1/2 antibody detects Twist1/2 protein by western blot analysis. Various whole cell extracts (30 µg) were separated by 12% SDS-PAGE, and the membrane was blotted with Twist1/2 antibody (GTx127310) diluted at 1:1000. The HRP-conjugated anti-rabbit IgG antibody (GTx213110-01) was used to detect the primary antibody.



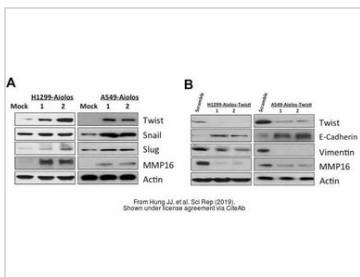
GTx127310 WB Image

Various whole cell extracts (30 µg) were separated by 12% SDS-PAGE, and the membrane was blotted with Twist1/2 antibody (GTx127310) diluted at 1:1000. The HRP-conjugated anti-rabbit IgG antibody (GTx213110-01) was used to detect the primary antibody.



GTx127310 WB Image

The data was published in the journal Oncotarget in 2016.[PMID: 26840566](https://pubmed.ncbi.nlm.nih.gov/26840566/)

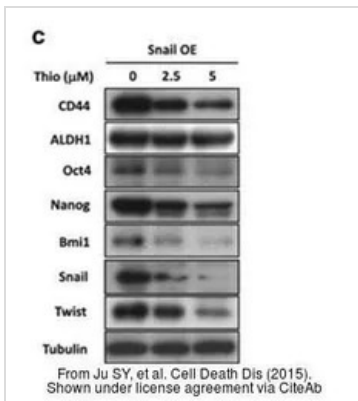


GTx127310 WB Image

The data was published in the journal Sci Rep in 2019.[PMID: 30816208](https://pubmed.ncbi.nlm.nih.gov/30816208/)

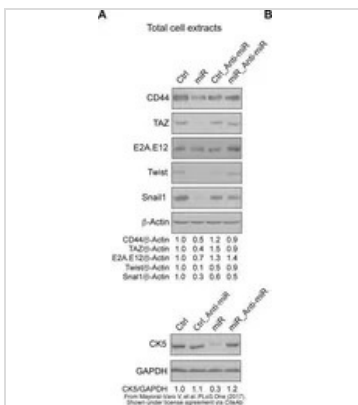


For full product information, images and publications, please visit our [website](https://www.genetex.com).



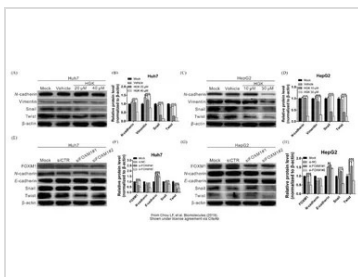
GTx127310 WB Image

The data was published in the journal Cell Death Dis in 2015. [PMID: 26136074](#)



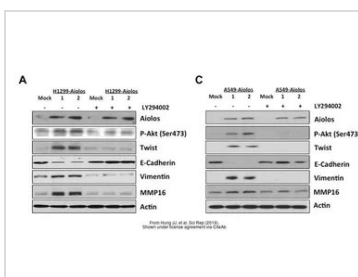
GTx127310 WB Image

The data was published in the journal PLoS One in 2017. [PMID: 29182685](#)



GTx127310 WB Image

The data was published in the journal Biomolecules in 2019. [PMID: 31877715](#)

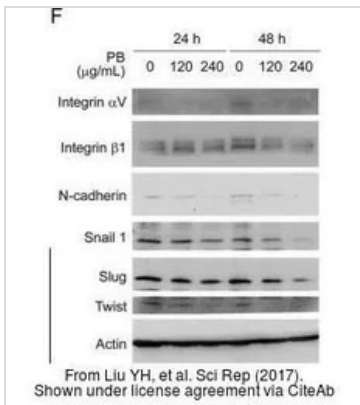


GTx127310 WB Image

The data was published in the journal Sci Rep in 2019. [PMID: 30816208](#)

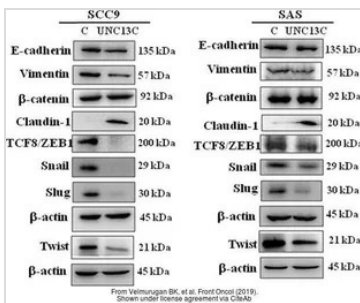


For full product information, images and publications, please visit our [website](#).



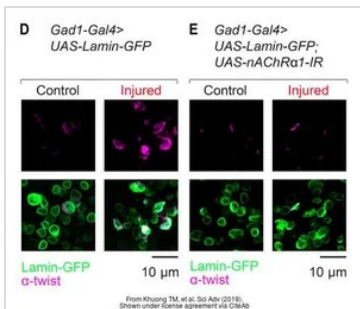
GTx127310 WB Image

The data was published in the journal Sci Rep in 2017. [PMID: 28134285](#)



GTx127310 WB Image

The data was published in the journal Front Oncol in 2019. [PMID: 31440468](#)



GTx127310 IHC Image

The data was published in the journal Sci Adv in 2019. [PMID: 31309148](#)



For full product information, images and publications, please visit our [website](#).

Goat Anti-Rabbit IgG antibody (HRP)

Cat. No. GTX213110-01

Host	Goat
Clonality	Polyclonal
Isotype	IgG
Application	WB, IHC-P, ELISA
Reactivity	Rabbit

Reference (501)
Package
1 ml

APPLICATION

Application Note

*Optimal dilutions/concentrations should be determined by the researcher.

Suggested dilution	Recommended dilution
WB	Assay dependent
IHC-P	1:100-1:1000
ELISA	Assay dependent

Not tested in other applications.

PROPERTIES

Form	Liquid
Buffer	0.05M Tris, 0.15M NaCl, 1%BSA
Preservative	0.025% ProClin 300
Storage	Store as concentrated solution. Centrifuge briefly prior to opening vial. For short-term storage (1-2 weeks), store at 4°C. For long-term storage, aliquot and store at -20°C or below. Avoid multiple freeze-thaw cycles.
Concentration	0.5 mg/ml (Please refer to the vial label for the specific concentration.)
Immunogen	Highly purified whole rabbit IgG
Purification	Purified by antigen-affinity chromatography.
Conjugation	Horseradish peroxidase(HRP)

Note

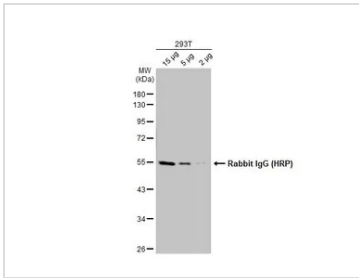
For laboratory research use only. Not for any clinical, therapeutic, or diagnostic use in humans or animals. Not for animal or human consumption.

Purchasers shall not, and agree not to enable third parties to, analyze, copy, reverse engineer or otherwise attempt to determine the structure or sequence of the product.



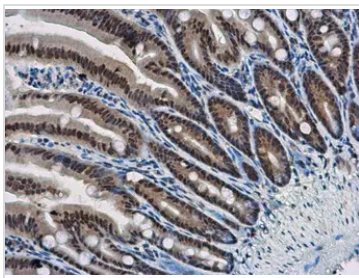
For full product information, images and publications, please visit our [website](#).

DATA IMAGES



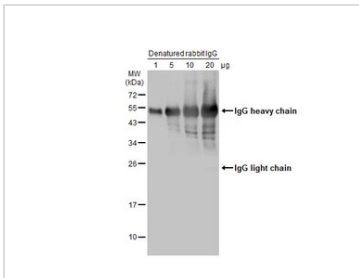
GTx213110-01 WB Image

Various whole cell extracts were separated by 10% SDS-PAGE, and the membrane was blotted with Rabbit IgG antibody (HRP) (GTx213110-01) diluted at 1:10000.



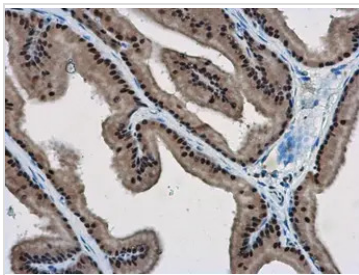
GTx213110-01 IHC-P Image

WBP11 antibody detects WBP11 protein at nucleus in mouse intestine by immunohistochemical analysis.
Sample: Paraffin-embedded mouse intestine.
WBP11 antibody (GTx118654) diluted at 1:500.
The signal was developed by Rabbit IgG antibody (HRP) (GTx213110-01)
Antigen Retrieval: Citrate buffer, pH 6.0, 15 min



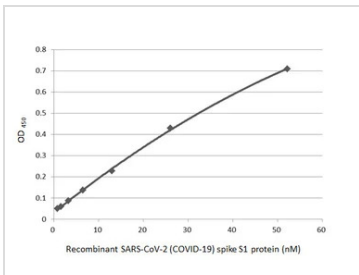
GTx213110-01 WB Image

Various amounts of denatured rabbit IgG protein were separated by 12% SDS-PAGE, and the membrane was blotted with HRP-conjugated anti-rabbit IgG antibody (GTx213110-01) diluted at 1:5000.



GTx213110-01 IHC-P Image

WBP11 antibody detects WBP11 protein at nucleus in rat prostate by immunohistochemical analysis.
Sample: Paraffin-embedded rat prostate.
WBP11 antibody (GTx118654) diluted at 1:500.
The signal was developed by Rabbit IgG antibody (HRP) (GTx213110-01).
Antigen Retrieval: Citrate buffer, pH 6.0, 15 min

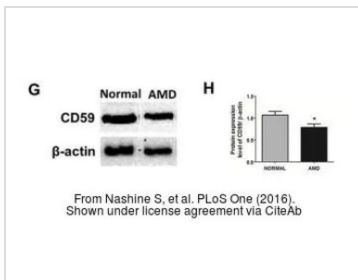


GTx213110-01 ELISA Image

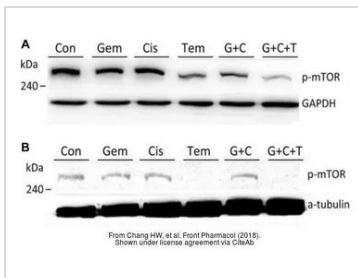
Indirect ELISA analysis performed by coating plate with recombinant SARS-CoV-2 (COVID-19) Spike S1 protein, His tag (active) (GTx135817-pro) (52.15-0.81 nM). Coated protein was probed with SARS-CoV-2 (COVID-19) Spike S1 antibody [HL134] (GTx635671) (1 µg/mL). Goat anti-rabbit IgG antibody (HRP) (GTx213110-01) (1:10000) was used to detect bound primary antibody.



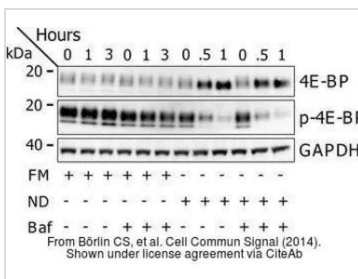
For full product information, images and publications, please visit our [website](https://www.genetex.com).


GTx213110-01 WB Image

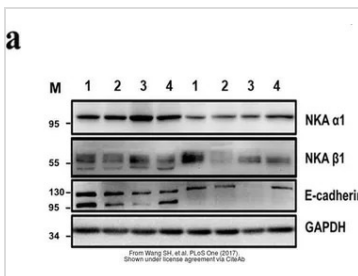
The data was published in the 2016 in PLoS One. [PMID: 27486856](https://pubmed.ncbi.nlm.nih.gov/27486856/)


GTx213110-01 WB Image

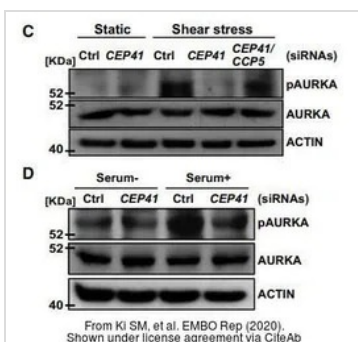
The data was published in the journal Front Pharmacol in 2018. [PMID: 30087612](https://pubmed.ncbi.nlm.nih.gov/30087612/)


GTx213110-01 WB Image

The data was published in the journal Cell Commun Signal in 2014. [PMID: 25214434](https://pubmed.ncbi.nlm.nih.gov/25214434/)


GTx213110-01 WB Image

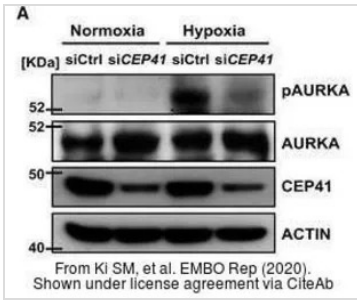
The data was published in the journal PLoS One in 2017. [PMID: 28832634](https://pubmed.ncbi.nlm.nih.gov/28832634/)


GTx213110-01 WB Image

The data was published in the journal EMBO Rep in 2020. [PMID: 31885126](https://pubmed.ncbi.nlm.nih.gov/31885126/)

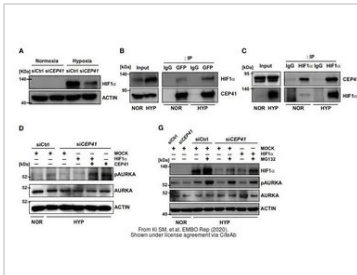


For full product information, images and publications, please visit our [website](https://www.genetex.com).



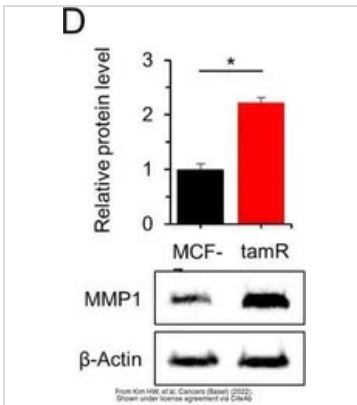
GTx213110-01 WB Image

The data was published in the journal EMBO Rep in 2020. [PMID: 31885126](#)



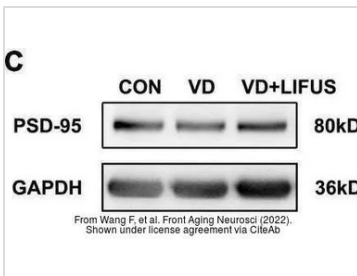
GTx213110-01 WB Image

The data was published in the journal EMBO Rep in 2020. [PMID: 31885126](#)



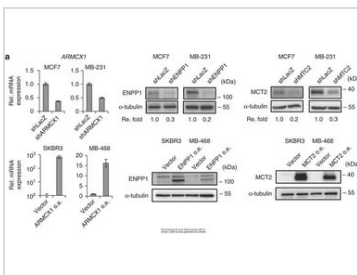
GTx213110-01 WB Image

The data was published in the 2022 in Cancers (Basel). [PMID: 35267540](#)



GTx213110-01 WB Image

The data was published in the 2022 in Front Aging Neurosci. [PMID: 35264943](#)

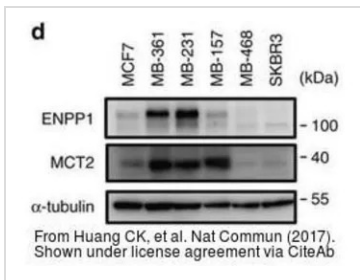


GTx213110-01 WB Image

The data was published in the 2017 in Nat Commun. [PMID: 28281525](#)

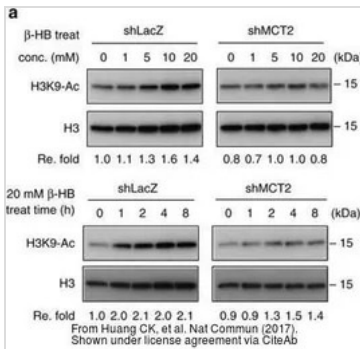


For full product information, images and publications, please visit our [website](#).



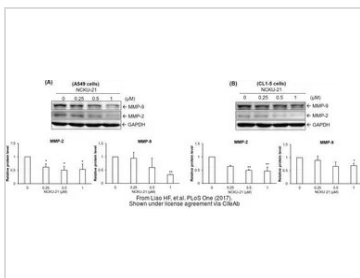
GTx213110-01 WB Image

The data was published in the 2017 in Nat Commun. [PMID: 28281525](#)



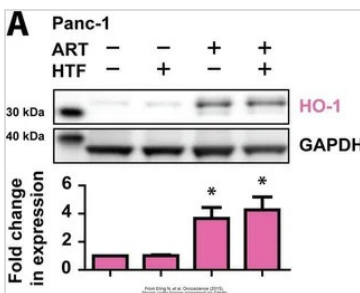
GTx213110-01 WB Image

The data was published in the 2017 in Nat Commun. [PMID: 28281525](#)



GTx213110-01 WB Image

The data was published in the journal PLoS One in 2017. [PMID: 28945763](#)



GTx213110-01 WB Image

The data was published in the journal Oncotarget in 2015. [PMID: 26097885](#)



For full product information, images and publications, please visit our [website](#).

HIF2 alpha antibody

Cat. No. GTX30114

Host	Rabbit
Clonality	Polyclonal
Isotype	IgG
Application	WB, ICC/IF, IHC-P, IHC
Reactivity	Human, Mouse, Rat, Monkey, Fish

Reference (15)
Package
100 µl

PRODUCT

Summary

HIF2 alpha antibody recognizes HIF2 alpha / EPAS1 protein, a transcription factor (predicted molecular weight of 97 kDa) induced by hypoxic conditions. It forms a heterodimer with HIF1 beta / ARNT to drive a specific gene expression profile in various physiological and pathological processes that occur in the context of hypoxia.

APPLICATION

Application Note

Recommended Starting Dilutions:

For WB: Use at a dilution of 1:100-1:3000. Recognizes a band at 118kDa.

For IHC: Use at a dilution of 1:100.

For ICC/IF: Use at a dilution of 1:100-1:1000.

Optimal dilutions/concentrations should be determined by the researcher.

Calculated MW	97 kDa. (Note)
Product Note	Specific for HIF-2 alpha/EPAS. Does not cross react with HIF-1 alpha.

PROPERTIES

Form	Liquid
Buffer	PBS, 20% Glycerol
Preservative	0.01% Thimerosal
Storage	Store as concentrated solution. Centrifuge briefly prior to opening vial. For short-term storage (1-2 weeks), store at 4°C. For long-term storage, aliquot and store at -20°C or below. Avoid multiple freeze-thaw cycles.
Concentration	1 mg/ml (Please refer to the vial label for the specific concentration.)
Immunogen	A peptide derived from the mouse/human HIF2 alpha.
Purification	Purified by antigen-affinity chromatography.
Conjugation	Unconjugated



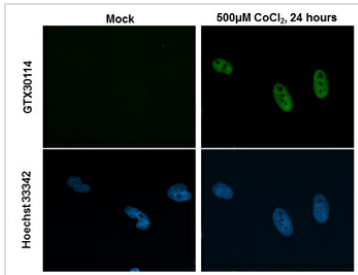
For full product information, images and publications, please visit our [website](#).

For laboratory research use only. Not for any clinical, therapeutic, or diagnostic use in humans or animals. Not for animal or human consumption.

Note

Purchasers shall not, and agree not to enable third parties to, analyze, copy, reverse engineer or otherwise attempt to determine the structure or sequence of the product.

DATA IMAGES



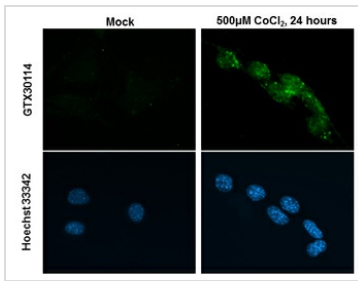
GTX30114 ICC/IF Image

HIF2 alpha antibody detects HIF2 alpha protein at nucleus by immunofluorescent analysis.

Sample: HeLa cells were fixed in 4% paraformaldehyde at RT for 15 min.

Green: HIF2 alpha stained by HIF2 alpha antibody (GTX30114) diluted at 1:200.

Blue: Hoechst 33342 staining.



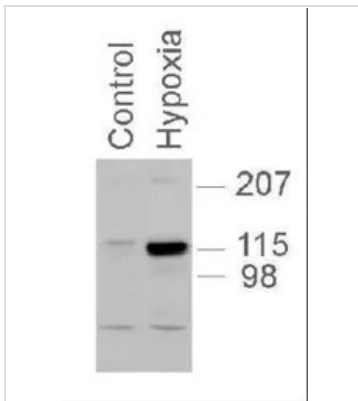
GTX30114 ICC/IF Image

HIF2 alpha antibody detects HIF2 alpha protein at nucleus by immunofluorescent analysis.

Sample: NIH-3T3 cells were fixed in 4% paraformaldehyde at RT for 15 min.

Green: HIF2 alpha stained by HIF2 alpha antibody (GTX30114) diluted at 1:200.

Blue: Hoechst 33342 staining.

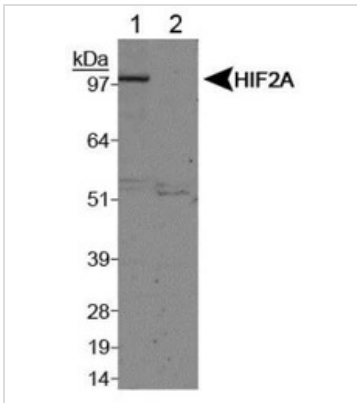


GTX30114 WB Image

GTX30114 utilized in western blot with PC12 nuclear extracts, 1:1,000, 5 second exposure.

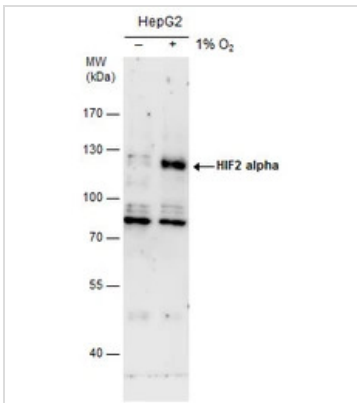


For full product information, images and publications, please visit our [website](https://www.genetex.com).



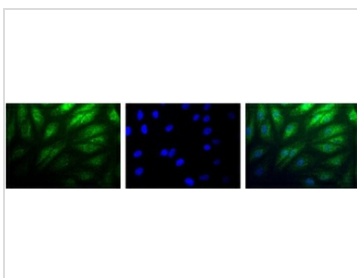
GTX30114 WB Image

Western Blot: HIF-2 alpha Antibody (GTX30114) - Analysis of HIF-2 alpha on Lane 1, Cobalt chloride treated COS7 nuclear extracts and Lane 2, Untreated COS7 nuclear extracts using GTX30114



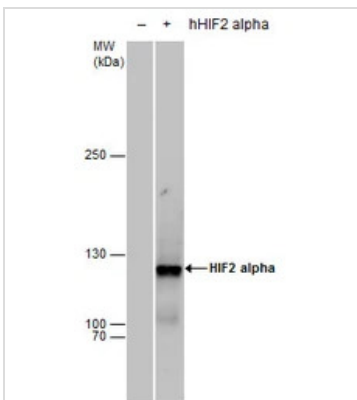
GTX30114 WB Image

HIF2 alpha antibody detects HIF2 alpha protein by western blot analysis. Un-treated (-) and treated (+, 0.01 O₂ treatment for 24h) HepG2 whole cell extracts (30 µg) were separated by 7.5% SDS-PAGE, and the membrane was blotted with HIF2 alpha antibody (GTX30114) diluted by 1:500. The HRP-conjugated anti-rabbit IgG antibody (GTX213110-01) was used to detect the primary antibody.



GTX30114 ICC/IF Image

Immunocytochemistry/Immunofluorescence: HIF-2 alpha Antibody (GTX30114) - Detection of HIF-2 Alpha (Green) in RCC4 cells using GTX30114. Nuclei (Blue) are counterstained with Hoechst 33258.

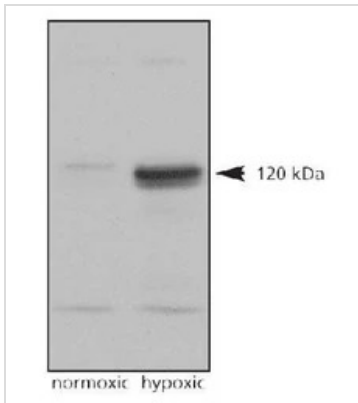


GTX30114 WB Image

HIF2 alpha antibody detects HIF2 alpha protein by western blot analysis. Non-transfected (-) and HIF2A-transfected (+, including Myc-DDK-tag) 293T whole cell extracts (30 µg) were separated by 5% SDS-PAGE, and the membrane was blotted with HIF2 alpha antibody (GTX30114) diluted by 1:1000. The HRP-conjugated anti-rabbit IgG antibody (GTX213110-01) was used to detect the primary antibody.

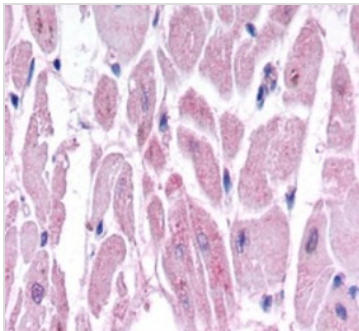


For full product information, images and publications, please visit our [website](https://www.genetex.com).



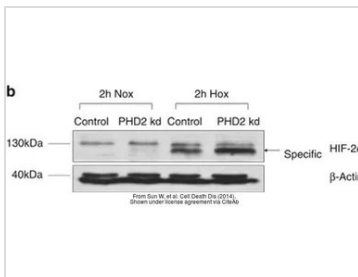
GTX30114 WB Image

Western Blot: HIF-2 alpha Antibody (GTX30114) - Analysis on normoxic and hypoxic nuclear rat cell lysates.



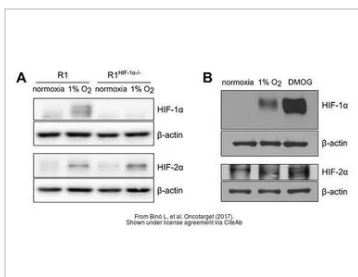
GTX30114 IHC Image

Immunohistochemistry: HIF-2 alpha Antibody (GTX30114) - Hif-2 alpha immunoreactivity in human cardiac myocytes



GTX30114 WB Image

The data was published in the journal Cell Death Dis in 2014. [PMID: 25010988](#)



GTX30114 WB Image

The data was published in the journal Oncotarget in 2017. [PMID: 29137374](#)



For full product information, images and publications, please visit our [website](#).