

GTX300062

Induced Pluripotent Stem Cells (iPSC) Antibody Panel _2

Product Content

Cat No	Product Name	Reactivity	Applications	Package
GTX101509	KLF4 antibody	Human, Mouse	WB, ICC/IF, IHC-P	25 µl
GTX103436	c-Myc antibody	Human, Mouse, Xenopus laevis	WB, ICC/IF, IHC-P, IHC-Fr, IP, ChIP assay	25 µl
GTX213111-01	Goat Anti-Mouse IgG antibody (HRP)	Mouse	WB, IHC-P, ELISA, IHC	25 µl
GTX627404	SOX2 antibody [GT1876]	Human, Mouse, Rat, Zebrafish	WB, ICC/IF, IHC-P, IHC-Fr, FCM, IP	25 µl
GTX627419	Oct4 antibody [GT486]	Human, Mouse	WB, ICC/IF, IHC-P, FCM, IP	25 µl
GTX627421	Nanog antibody [GT3312]	Human, Mouse	WB, ICC/IF, FCM	25 µl
GTX628139	Lin28A antibody [GT1086]	Human	WB, ICC/IF, IHC-P, FCM	25 µl

Note

For In vitro laboratory use only. Not for any clinical, therapeutic, or diagnostic use in humans or animals. Not for animal or human consumption.



For full product information, images and publications, please visit our [website](#).

KLF4 antibody

Cat. No. GTX101509

Host	Rabbit
Clonality	Polyclonal
Isotype	IgG
Applications	WB, ICC/IF, IHC-P
Reactivity	Human, Mouse

References (8)

★★★★☆☆ Review (2)

Package

100 µl, 25 µl

Applications

Application Note

*Optimal dilutions/concentrations should be determined by the researcher.

Suggested dilution	Recommended dilution
WB	1:5000-1:20000
ICC/IF	1:100-1:1000
IHC-P	1:100-1:1000

Not tested in other applications.

Calculated MW 55 kDa. ([Note](#))

Properties

Form	Liquid
Buffer	PBS, 20% Glycerol
Preservative	0.01% Thimerosal
Storage	Store as concentrated solution. Centrifuge briefly prior to opening vial. For short-term storage (1-2 weeks), store at 4°C. For long-term storage, aliquot and store at -20°C or below. Avoid multiple freeze-thaw cycles.
Concentration	1 mg/ml (Please refer to the vial label for the specific concentration.)
Immunogen	Recombinant protein encompassing a sequence within the center region of human KLF4. The exact sequence is proprietary.
Purification	Purified by antigen-affinity chromatography.
Conjugation	Unconjugated

Note

For laboratory research use only. Not for any clinical, therapeutic, or diagnostic use in humans or animals. Not for animal or human consumption.

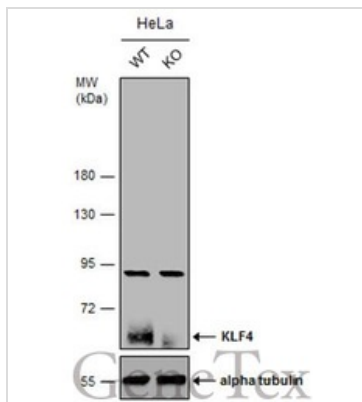
Purchasers shall not, and agree not to enable third parties to, analyze, copy, reverse engineer or otherwise attempt to determine the structure or sequence of the product.



For full product information, images and publications, please visit our [website](#).

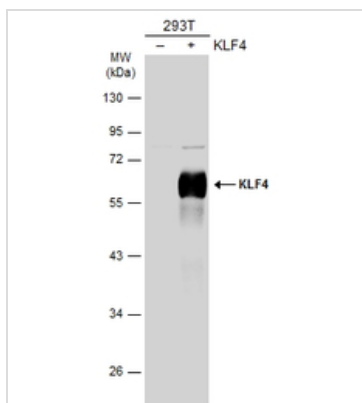
Date 2025 / 05 / 20 Page 2 of 30

DATA IMAGES



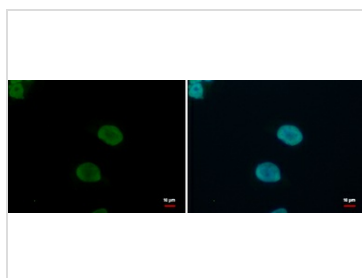
GTx101509 WB Image

Wild-type (WT) and KLF4 knockout (KO) HeLa cell extracts (30 µg) were separated by 7.5% SDS-PAGE, and the membrane was blotted with KLF4 antibody (GTx101509) diluted at 1:2000. The HRP-conjugated anti-rabbit IgG antibody (GTx213110-01) was used to detect the primary antibody.



GTx101509 WB Image

Non-transfected (-) and transfected (+) 293T whole cell extracts (30 µg) were separated by 10% SDS-PAGE, and the membrane was blotted with KLF4 antibody (GTx101509) diluted at 1:20000. The HRP-conjugated anti-rabbit IgG antibody (GTx213110-01) was used to detect the primary antibody.



GTx101509 ICC/IF Image

KLF4 antibody detects KLF4 protein at nucleus by immunofluorescent analysis.

Sample: HeLa cells were fixed in 4% paraformaldehyde/PBS for 15 min.

Green: KLF4 protein stained by KLF4 antibody (GTx101509) diluted at 1:500.

Blue: Hoechst 33342 staining.



GTx101509 IHC-P Image

KLF4 antibody detects KLF4 protein at nucleus on mouse esophagus by immunohistochemical analysis.

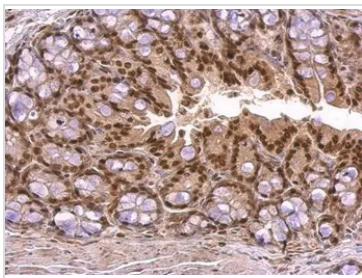
Sample: Paraffin-embedded mouse esophagus.

KLF4 antibody (GTx101509) dilution: 1:500.

Antigen Retrieval: Trilogy™ (EDTA based, pH 8.0) buffer, 15min



For full product information, images and publications, please visit our [website](https://www.genetex.com).


GTX101509 IHC-P Image

KLF4 antibody detects KLF4 protein at nucleus on mouse colon by immunohistochemical analysis.

Sample: Paraffin-embedded mouse colon.

KLF4 antibody (GTX101509) dilution: 1:500.

Antigen Retrieval: Trilogy™ (EDTA based, pH 8.0) buffer, 15min



For full product information, images and publications, please visit our [website](https://www.genetex.com).

c-Myc antibody

Cat. No. GTX103436

Host	Rabbit
Clonality	Polyclonal
Isotype	IgG
Applications	WB, ICC/IF, IHC-P, IHC-Fr, IP, ChIP assay
Reactivity	Human, Mouse, Xenopus laevis

References (35)

Package

100 µl, 25 µl

Applications

Application Note

*Optimal dilutions/concentrations should be determined by the researcher.

Suggested dilution	Recommended dilution
WB	1:500-1:3000
ICC/IF	1:100-1:1000
IHC-P	Assay dependent
IHC-Fr	Assay dependent
IP	1:100-1:500
ChIP assay	Assay dependent

Not tested in other applications.

Calculated MW 49 kDa. ([Note](#))

Product Note This antibody can detect the endogenous c-Myc, but it is unable to recognize the c-Myc tag.

Properties

Form	Liquid
Buffer	PBS, 1% BSA, 20% Glycerol
Preservative	0.025% ProClin 300
Storage	Store as concentrated solution. Centrifuge briefly prior to opening vial. For short-term storage (1-2 weeks), store at 4°C. For long-term storage, aliquot and store at -20°C or below. Avoid multiple freeze-thaw cycles.
Concentration	0.29 mg/ml (Please refer to the vial label for the specific concentration.)
Immunogen	Recombinant protein encompassing a sequence within the center region of human c-Myc. The exact sequence is proprietary.
Purification	Purified by antigen-affinity chromatography.



For full product information, images and publications, please visit our [website](#).

Date 2025 / 05 / 20 Page 5 of 30

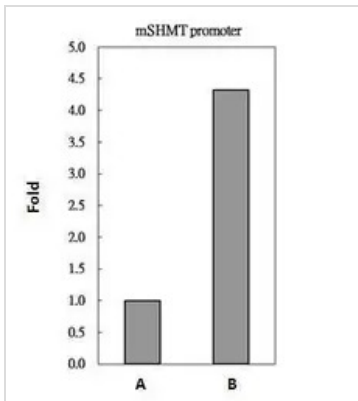
Conjugation

Unconjugated

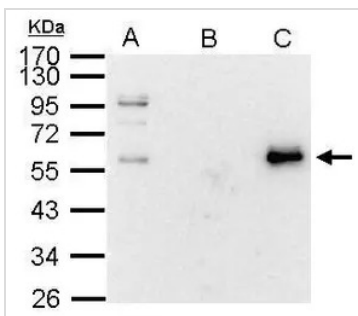
For laboratory research use only. Not for any clinical, therapeutic, or diagnostic use in humans or animals. Not for animal or human consumption.

Note

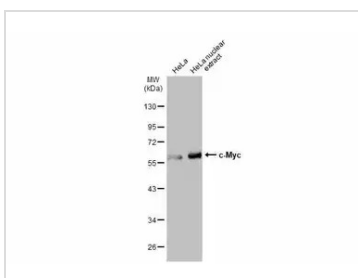
Purchasers shall not, and agree not to enable third parties to, analyze, copy, reverse engineer or otherwise attempt to determine the structure or sequence of the product.

DATA IMAGES

GTx103436 ChIP assay Image

c-Myc antibody immunoprecipitates c-Myc protein-DNA in ChIP experiments. ChIP Sample: 293T whole cell lysate/extract A. 5 µg preimmune rabbit IgG B. 5 µg of c-Myc antibody (GTx103436) The precipitated DNA was detected by PCR with primer set targeting to mSHMT promoter.


GTx103436 IP Image

c-Myc antibody immunoprecipitates c-Myc protein in IP experiments. IP Sample: 1000 µg 293T whole cell lysate/extract A. 20 µg 293T whole cell lysate/extract B. Control with 2.5 µg of preimmune rabbit IgG C. Immunoprecipitation of c-Myc protein by 2.5 µg of c-Myc antibody (GTx103436) 10% SDS-PAGE The immunoprecipitated c-Myc protein was detected by c-Myc antibody (GTx103436) diluted at 1:1000. EasyBlot anti-rabbit IgG (GTx221666-01) was used as a secondary reagent.


GTx103436 WB Image

HeLa whole cell and nuclear extracts (30 µg) were separated by 10% SDS-PAGE, and the membrane was blotted with c-Myc antibody (GTx103436) diluted at 1:3000. The HRP-conjugated anti-rabbit IgG antibody (GTx213110-01) was used to detect the primary antibody.

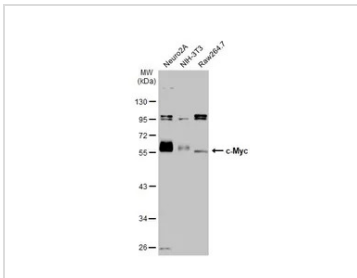


For full product information, images and publications, please visit our [website](https://www.genetex.com).



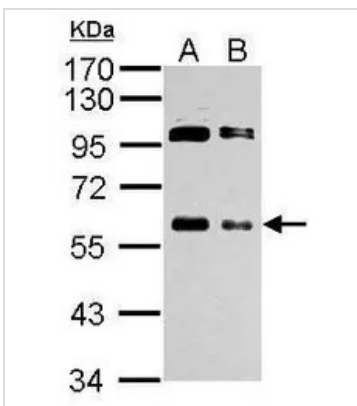
GTX103436 WB Image

Wild-type (WT) and MYC knockout (KO) 293T cell extracts (30 µg) were separated by 10% SDS-PAGE, and the membrane was blotted with c-Myc antibody (GTX103436) diluted at 1:500. The HRP-conjugated anti-rabbit IgG antibody (GTX213110-01) was used to detect the primary antibody.



GTX103436 WB Image

Various whole cell extracts (30 µg) were separated by 10% SDS-PAGE, and the membrane was blotted with c-Myc antibody (GTX103436) diluted at 1:1000. The HRP-conjugated anti-rabbit IgG antibody (GTX213110-01) was used to detect the primary antibody.



GTX103436 WB Image

Sample (whole cell lysate)

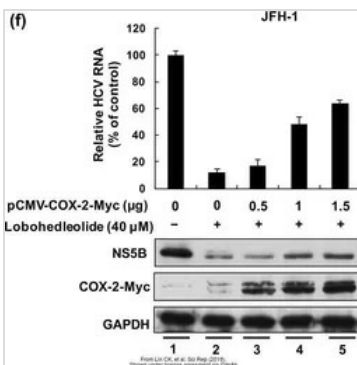
A: 293T 20ug

B: 293T 10ug

10% SDS PAGE

GTX103436 diluted at 1:1000

The HRP-conjugated anti-rabbit IgG antibody (GTX213110-01) was used to detect the primary antibody.

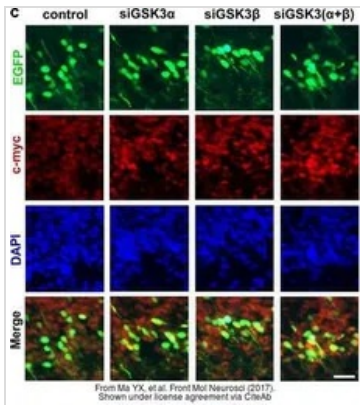


GTX103436 WB Image

The data was published in the journal Sci Rep in 2018. [PMID: 29875371](https://pubmed.ncbi.nlm.nih.gov/29875371/)

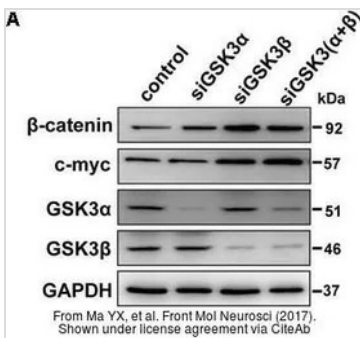


For full product information, images and publications, please visit our [website](https://www.genetex.com).



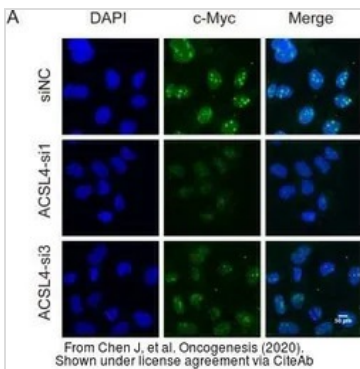
GTx103436 IHC-Fr Image

The data was published in the journal Front Mol Neurosci in 2017. [PMID: 29234272](https://pubmed.ncbi.nlm.nih.gov/29234272/)



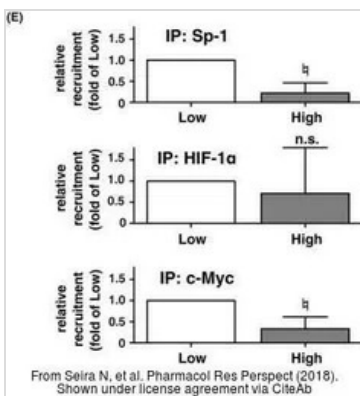
GTx103436 WB Image

The data was published in the journal Front Mol Neurosci in 2017. [PMID: 29234272](https://pubmed.ncbi.nlm.nih.gov/29234272/)



GTx103436 ICC/IF Image

The data was published in the journal Oncogenesis in 2020. [PMID: 32350243](https://pubmed.ncbi.nlm.nih.gov/32350243/)

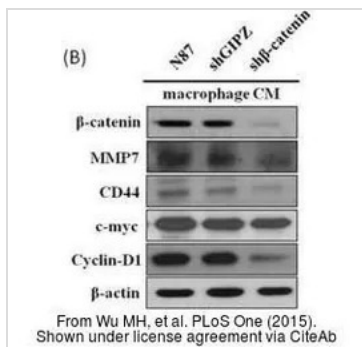


GTx103436 ChIP assay Image

The data was published in the journal Pharmacol Res Perspect in 2018. [PMID: 30455960](https://pubmed.ncbi.nlm.nih.gov/30455960/)



For full product information, images and publications, please visit our [website](https://www.genetex.com).



GTX103436 WB Image

The data was published in the journal PLoS One in 2015. [PMID: 26226629](https://pubmed.ncbi.nlm.nih.gov/26226629/)



For full product information, images and publications, please visit our [website](https://www.genetex.com).

Goat Anti-Mouse IgG antibody (HRP)

Cat. No. GTX213111-01

Host	Goat
Clonality	Polyclonal
Isotype	IgG
Applications	WB, IHC-P, ELISA, IHC
Reactivity	Mouse

References (392)

Package

1 ml

Applications

Application Note

*Optimal dilutions/concentrations should be determined by the researcher.

Suggested dilution	Recommended dilution
WB	Assay dependent
IHC-P	1:100-1:1000
ELISA	Assay dependent
IHC	Assay dependent

Not tested in other applications.

Properties

Form	Liquid
Buffer	0.05M Tris, 0.15M NaCl, 1%BSA
Preservative	0.025% ProClin 300
Storage	Store as concentrated solution. Centrifuge briefly prior to opening vial. For short-term storage (1-2 weeks), store at 4°C. For long-term storage, aliquot and store at -20°C or below. Avoid multiple freeze-thaw cycles.
Concentration	0.25 mg/ml (Please refer to the vial label for the specific concentration.)
Immunogen	Highly purified whole mouse IgG
Purification	Purified by antigen-affinity chromatography.
Conjugation	Horseradish peroxidase(HRP)

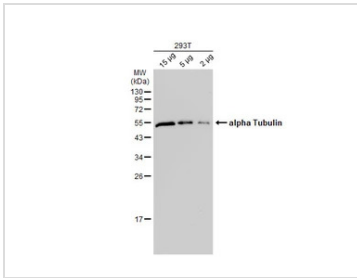
Note

For laboratory research use only. Not for any clinical, therapeutic, or diagnostic use in humans or animals. Not for animal or human consumption.

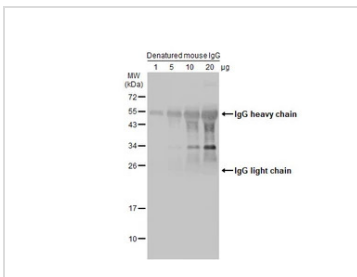
Purchasers shall not, and agree not to enable third parties to, analyze, copy, reverse engineer or otherwise attempt to determine the structure or sequence of the product.



For full product information, images and publications, please visit our [website](#).

DATA IMAGES

GTX213111-01 WB Image

Various whole cell extracts were separated by 12% SDS-PAGE, and the membrane was blotted with alpha Tubulin antibody [GT114] (GTX628802) diluted at 1:10000. The HRP-conjugated anti-mouse IgG antibody (GTX213111-01) was used to detect the primary antibody.


GTX213111-01 WB Image

Various amounts of denatured mouse IgG protein were separated by 12% SDS-PAGE, and the membrane was blotted with HRP-conjugated anti-rabbit IgG antibody (GTX213110-01) diluted at 1:5000.


GTX213111-01 IHC-P Image

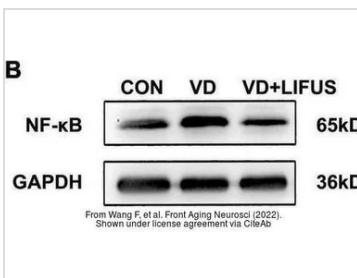
E2F1 antibody [16G7] detects E2F1 protein at nucleus in mouse cervix by immunohistochemical analysis.

Sample: Paraffin-embedded mouse cervix.

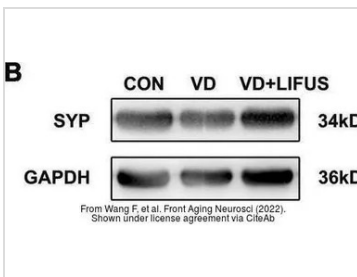
E2F1 antibody [16G7] (GTX70163) diluted at 1:500.

The signal was developed by Mouse IgG antibody (HRP) (GTX213111-01).

Antigen Retrieval: Citrate buffer, pH 6.0, 15 min


GTX213111-01 WB Image

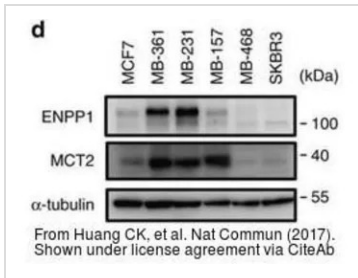
The data was published in the 2022 in Front Aging Neurosci. [PMID: 35264943](https://doi.org/10.3389/fnagi.2022.852493)


GTX213111-01 WB Image

The data was published in the 2022 in Front Aging Neurosci. [PMID: 35264943](https://doi.org/10.3389/fnagi.2022.852493)

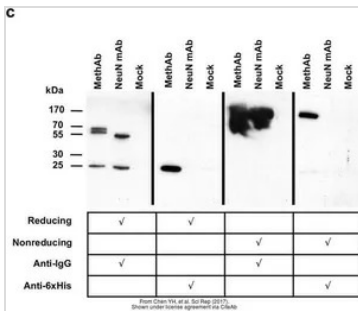


For full product information, images and publications, please visit our [website](https://www.genetex.com).



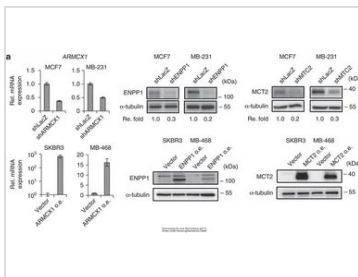
GTx213111-01 WB Image

The data was published in the 2017 in Nat Commun. [PMID: 28281525](#)



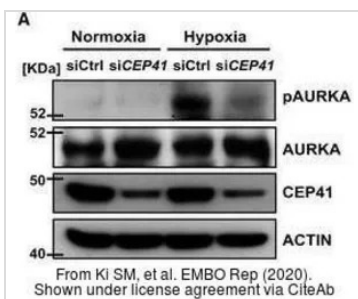
GTx213111-01 WB Image

The data was published in the 2017 in Sci Rep. [PMID: 28387350](#)



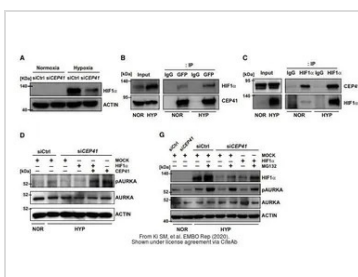
GTx213111-01 WB Image

The data was published in the 2017 in Nat Commun. [PMID: 28281525](#)



GTx213111-01 WB Image

The data was published in the journal EMBO Rep in 2020. [PMID: 31885126](#)

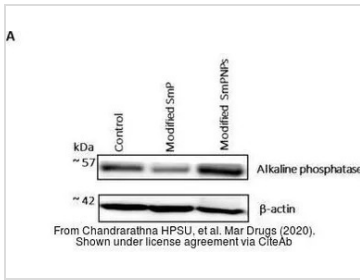


GTx213111-01 WB Image

The data was published in the journal EMBO Rep in 2020. [PMID: 31885126](#)

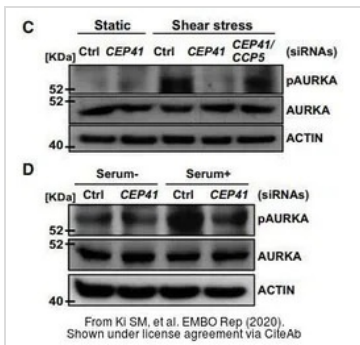


For full product information, images and publications, please visit our [website](#).



GTx213111-01 WB Image

The data was published in the journal Mar Drugs in 2020. [PMID: 32245246](https://pubmed.ncbi.nlm.nih.gov/32245246/)



GTx213111-01 WB Image

The data was published in the journal EMBO Rep in 2020. [PMID: 31885126](https://pubmed.ncbi.nlm.nih.gov/31885126/)



For full product information, images and publications, please visit our [website](https://www.genetex.com).

SOX2 antibody [GT1876]

Cat. No. GTX627404

Host	Mouse
Clonality	Monoclonal
Isotype	IgG1
Applications	WB, ICC/IF, IHC-P, IHC-Fr, FCM, IP
Reactivity	Human, Mouse, Rat, Zebrafish

References (15)

★★★★☆ Review (2)

Package

100 µl, 25 µl

Applications

Application Note

*Optimal dilutions/concentrations should be determined by the researcher.

Suggested dilution	Recommended dilution
WB	1:500-1:10000
ICC/IF	Assay dependent
IHC-P	Assay dependent
IHC-Fr	1:100-1:1000
FCM	1:50-1:200
IP	1:100-1:500

Note : The use of GTX627404 for zebrafish is based on WB testing. For IHC or IHC whole mount using zebrafish samples, we recommend GTX124477.

Not tested in other applications.

Calculated MW 34 kDa. ([Note](#))

Properties

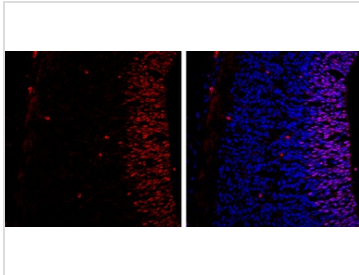
Form	Liquid
Buffer	PBS
Preservative	No preservative
Storage	Store as concentrated solution. Centrifuge briefly prior to opening vial. For short-term storage (1-2 weeks), store at 4°C. For long-term storage, aliquot and store at -20°C or below. Avoid multiple freeze-thaw cycles.
Concentration	1 mg/ml (Please refer to the vial label for the specific concentration.)
Immunogen	Recombinant protein encompassing a sequence within the center region of human SOX2. The exact sequence is proprietary.
Purification	Affinity purified by Protein G.
Conjugation	Unconjugated

For full product information, images and publications, please visit our [website](#).

For laboratory research use only. Not for any clinical, therapeutic, or diagnostic use in humans or animals. Not for animal or human consumption.

Note

Purchasers shall not, and agree not to enable third parties to, analyze, copy, reverse engineer or otherwise attempt to determine the structure or sequence of the product.

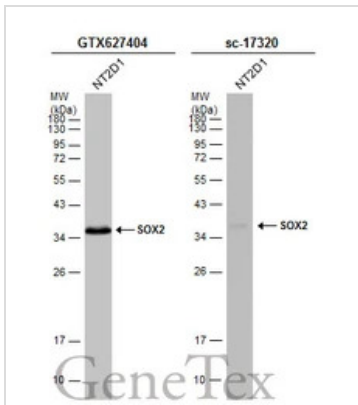
DATA IMAGES

GTX627404 IHC-Fr Image

SOX2 antibody [GT1876] detects SOX2 protein expression at nucleus by immunohistochemical analysis.

Sample: Frozen sectioned E13.5 Rat brain.

Red: SOX2 protein stained by SOX2 antibody [GT1876] (GTX627404) diluted at 1:250.

Blue: Fluoroshield with DAPI (GTX30920).

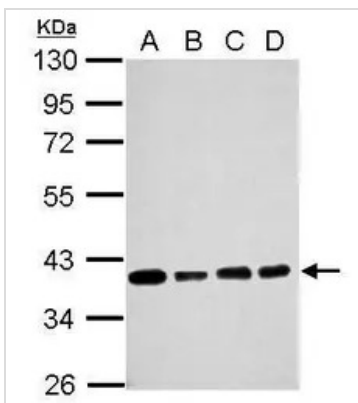

GTX627404 WB Image

Whole cell extract (30 µg) was separated by 12% SDS-PAGE, and the membranes were blotted with SOX2

antibody [GT1876] (GTX627404) diluted at 1:1000 and competitor's antibody (sc-17320) diluted at 1:500.

The HRP-conjugated anti-mouse IgG antibody (GTX213111-01) was used to detect the primary antibody.

*The competitor is not affiliated with GeneTex and does not endorse this product.


GTX627404 WB Image

Sample (30 ug of whole cell lysate)

A: NT2D1

B: PC-3

C: U87-MG

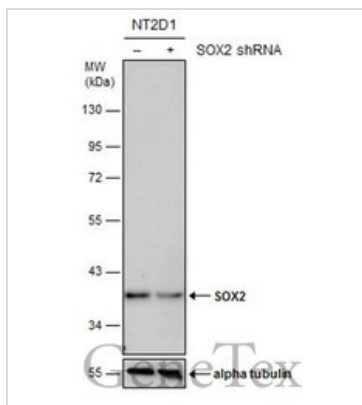
D: SK-N-SH

10% SDS PAGE

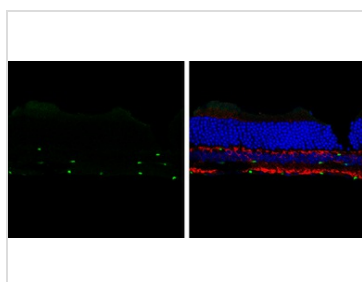
GTX627404 diluted at 1:5000



For full product information, images and publications, please visit our [website](http://www.genetex.com).


GTX627404 WB Image

Non-transfected (–) and transfected (+) NT2D1 whole cell extracts (30 µg) were separated by 10% SDS-PAGE, and the membrane was blotted with SOX2 antibody [GT1876] (GTX627404) diluted at 1:500.


GTX627404 IHC-Fr Image

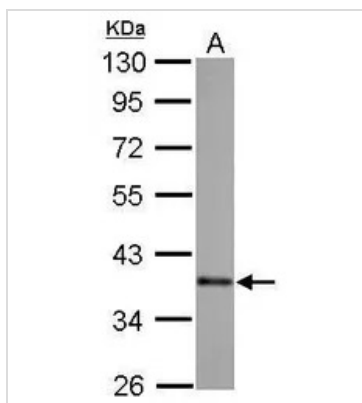
SOX2 antibody [GT1876] detects SOX2 protein by immunohistochemical analysis.

Sample: Frozen sectioned adult mouse retina.

Green: SOX2 protein stained by SOX2 antibody [GT1876] (GTX627404) diluted at 1:250.

Red: PKC alpha protein stained by PKC alpha antibody [GT1876] (GTX130453) diluted at 1:250.

Blue: Fluoroshield with DAPI (GTX30920).

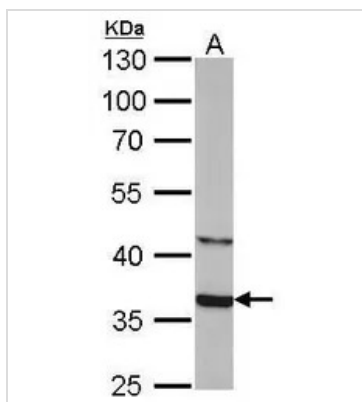

GTX627404 WB Image

SOX2 antibody [GT1876] detects SOX2 protein by Western blot analysis.

A. 30 µg zebrafish eye lysate/extract

10 % SDS-PAGE

SOX2 antibody [GT1876] (GTX627404) dilution: 1:500


GTX627404 WB Image

SOX2 antibody [GT1876] detects SOX2 protein by Western blot analysis.

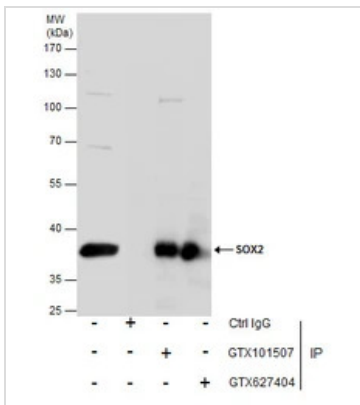
A. 30 µg human ESC whole cell lysate/extract

10 % SDS-PAGE

SOX2 antibody [GT1876] (GTX627404) dilution: 1:5000



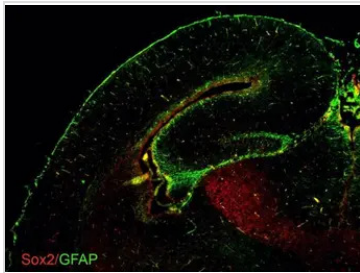
For full product information, images and publications, please visit our [website](https://www.genetex.com).



GTX627404 IP Image

Immunoprecipitation of SOX2 protein from NT2D1 whole cell extracts using 5 µg of SOX2 antibody [GT1876] (GTX627404) or SOX2 antibody [N1C3] (GTX101057).

Western blot analysis was performed using SOX2 antibody [GT1876] (GTX627404) diluted at 1:500. EasyBlot anti-Mouse IgG (GTX221667-01) was used as a secondary reagent.



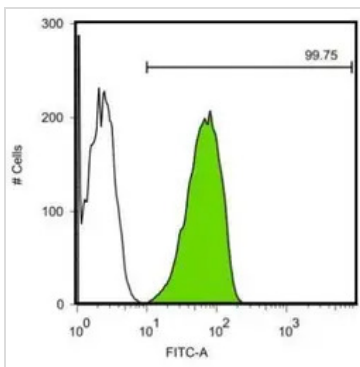
GTX627404 IHC-Fr Image

Sox2 antibodies detect Sox2 proteins on embryonic mouse brain by immunohistochemical analysis.

Sample: Frozen section of embryonic mouse brain (mE18.5).

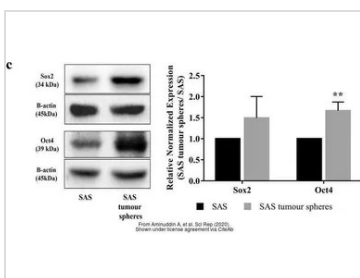
Green: GFAP antibody (GTX100850) diluted at 1:500.

Red: Sox2 antibody [GT1876] (GTX627404) diluted at 1:500.



GTX627404 FCM Image

SOX2 antibody [GT1876] detects SOX2 protein by flow cytometry analysis. Sample: Human embryonic stem cells. Black: Isotype control dilution: 1:50. Green: SOX2 antibody [GT1876] dilution: 1:50.

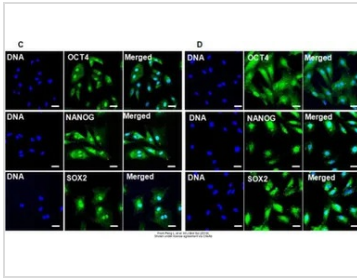


GTX627404 WB Image

The data was published in the 2020 in Sci Rep. [PMID: 32398775](https://doi.org/10.1038/s41598-020-73987-7).

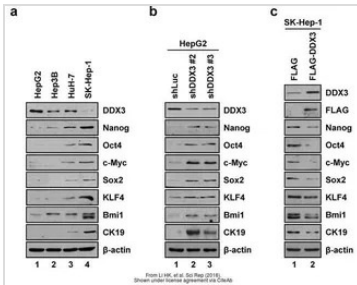


For full product information, images and publications, please visit our [website](https://www.genetex.com).



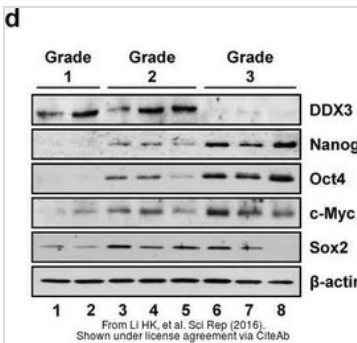
GTx627404 ICC/IF Image

The data was published in the journal Int J Biol Sci in 2019. [PMID: 31595152](#)



GTx627404 WB Image

The data was published in the journal Sci Rep in 2016. [PMID: 27344963](#)



GTx627404 WB Image

The data was published in the journal Sci Rep in 2016. [PMID: 27344963](#)



For full product information, images and publications, please visit our [website](#).

Oct4 antibody [GT486]

Cat. No. GTX627419

Host	Mouse
Clonality	Monoclonal
Isotype	IgG2a
Applications	WB, ICC/IF, IHC-P, FCM, IP
Reactivity	Human, Mouse

References (18)

★★★★★ Review (4)

Package

100 µl, 25 µl

Applications

Application Note

*Optimal dilutions/concentrations should be determined by the researcher.

Suggested dilution	Recommended dilution
WB	1:500-1:3000
ICC/IF	1:100-1:1000
IHC-P	1:100-1:1000
FCM	1:50-1:200
IP	1:1000-1:1000

Not tested in other applications.

Observed MW (kDa) 45 kDa.

Properties

Form	Liquid
Buffer	PBS
Preservative	No preservative
Storage	Store as concentrated solution. Centrifuge briefly prior to opening vial. For short-term storage (1-2 weeks), store at 4°C. For long-term storage, aliquot and store at -20°C or below. Avoid multiple freeze-thaw cycles.
Concentration	1 mg/ml (Please refer to the vial label for the specific concentration.)
Immunogen	Recombinant protein encompassing a sequence within the center region of human Oct4. The exact sequence is proprietary.
Purification	Purified by antigen-affinity chromatography. From tissue culture supernatant
Conjugation	Unconjugated

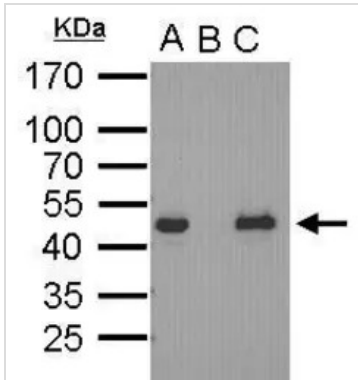


For full product information, images and publications, please visit our [website](#).

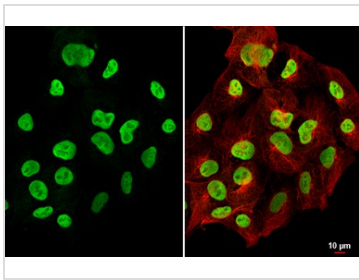
For laboratory research use only. Not for any clinical, therapeutic, or diagnostic use in humans or animals. Not for animal or human consumption.

Note

Purchasers shall not, and agree not to enable third parties to, analyze, copy, reverse engineer or otherwise attempt to determine the structure or sequence of the product.

DATA IMAGES

GTX627419 IP Image

Oct4 antibody immunoprecipitates Oct4 protein in IP experiments. IP Sample: cell lysate/extract of Oct4 gene transfected 293T cells A. Cell lysate/extract of transfected 293T cell B. Control with 2 µg of preimmune mouse IgG C. Immunoprecipitation of Oct4 by 2 µg of Oct4 antibody (GTX627419) 12% SDS-PAGE The immunoprecipitated Oct4 protein was detected by Oct4 antibody (GTX627419) diluted at 1:1000. EasyBlot anti-mouse IgG (GTX221667-01) was used as a secondary reagent.

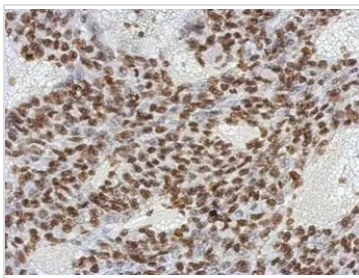

GTX627419 ICC/IF Image

Oct4 antibody [GT486] detects Oct4 protein at nucleus by immunofluorescent analysis.

Sample: NT2D1 cells were fixed in 4% paraformaldehyde at RT for 15 min.

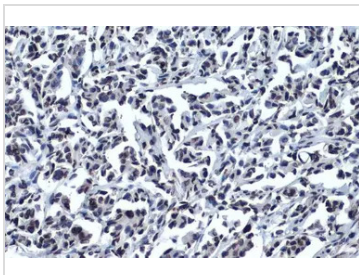
Green: Oct4 stained by Oct4 antibody [GT486] (GTX627419) diluted at 1:500.

Red: beta Tubulin, a cytoskeleton marker, stained by beta Tubulin antibody (GTX101279) diluted at 1:1000.


GTX627419 IHC-P Image

Immunohistochemical analysis of paraffin-embedded BT483 xenograft, using OCT3/4(GTX627419) antibody at 1:200 dilution.

Antigen Retrieval: Trilogy™ (EDTA based, pH 8.0) buffer, 15min


GTX627419 IHC-P Image

Oct4 antibody [GT486] detects Oct4 protein at nucleus by immunohistochemical analysis.

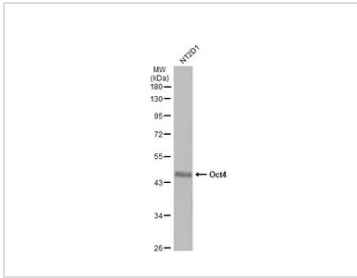
Sample: Paraffin-embedded human breast carcinoma.

Oct4 stained by Oct4 antibody [GT486] (GTX627419) diluted at 1:500.

Antigen Retrieval: Citrate buffer, pH 6.0, 15 min

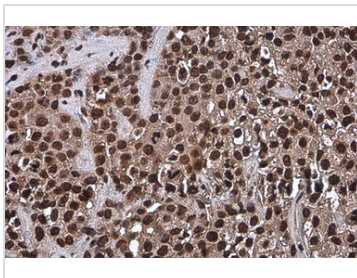


For full product information, images and publications, please visit our [website](https://www.genetex.com).



GTX627419 WB Image

Whole cell extract (30 µg) was separated by 10% SDS-PAGE, and the membrane was blotted with Oct4 antibody [GT486] (GTX627419) diluted at 1:1000. The HRP-conjugated anti-mouse IgG antibody (GTX213111-01) was used to detect the primary antibody.



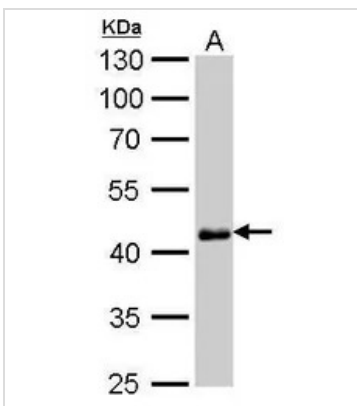
GTX627419 IHC-P Image

Oct4 antibody [GT486] detects Oct4 protein at nucleus by immunohistochemical analysis.

Sample: Paraffin-embedded human cervical carcinoma.

Oct4 stained by Oct4 antibody [GT486] (GTX627419) diluted at 1:200.

Antigen Retrieval: Citrate buffer, pH 6.0, 15 min



GTX627419 WB Image

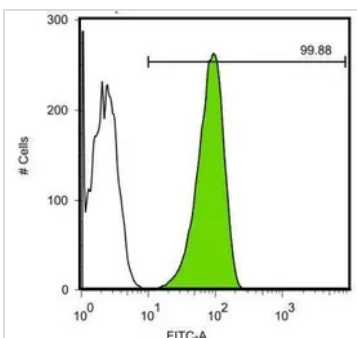
Oct4 antibody [GT486] detects Oct4 protein by western blot analysis.

A. 30 µg human ESC whole cell lysate/extract

10% SDS-PAGE

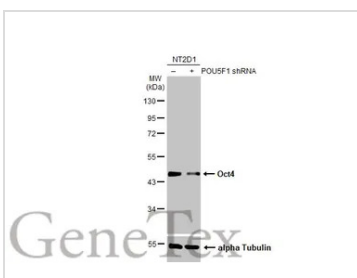
(GTX627419) dilution: 1:1000

The HRP-conjugated anti-mouse IgG antibody (GTX213111-01) was used to detect the primary antibody.



GTX627419 FCM Image

Oct4 antibody [GT486] detects POU5F1 protein by flow cytometry analysis. Sample: Human embryonic stem cells Black: Isotype control dilution: 1:50 Green: Oct4 antibody [GT486] dilution: 1:50

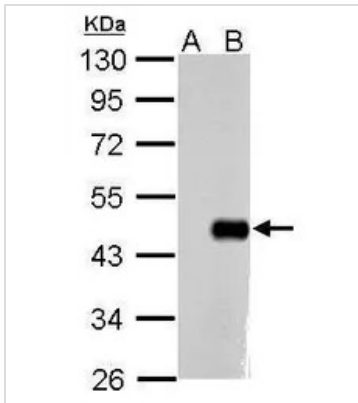


GTX627419 WB Image

Non-transfected (-) and transfected (+) NT2D1 whole cell extracts (30 µg) were separated by 10% SDS-PAGE, and the membrane was blotted with Oct4 antibody [GT486] (GTX627419) diluted at 1:120000. The HRP-conjugated anti-mouse IgG antibody (GTX213111-01) was used to detect the primary antibody.



For full product information, images and publications, please visit our [website](http://www.genetex.com).


GTX627419 WB Image

Sample (10 µg of whole cell lysate)

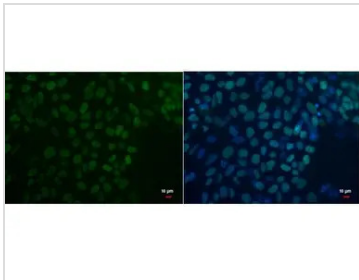
A: Non-transfected HeLa lysates

B: HeLa transfected recombinant Oct4 protein

10% SDS PAGE

GTX627419 diluted at 1:1000

The HRP-conjugated anti-mouse IgG antibody (GTX213111-01) was used to detect the primary antibody.


GTX627419 ICC/IF Image

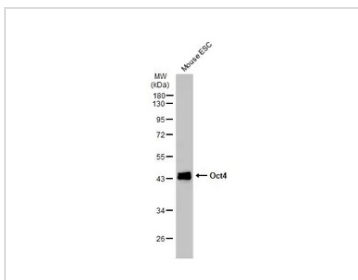
Oct4 antibody detects Oct4 protein by immunofluorescent analysis.

Sample: human embryonic stem cell were fixed in 4% paraformaldehyde for 15 min.

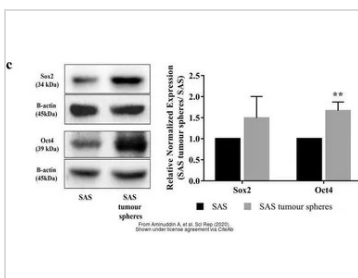
Green: Oct4 protein stained by Oct4 antibody (GTX627419) diluted at 1:200.

Blue: Hoechst 33342 staining.

Scale bar = 10 µm.


GTX627419 WB Image

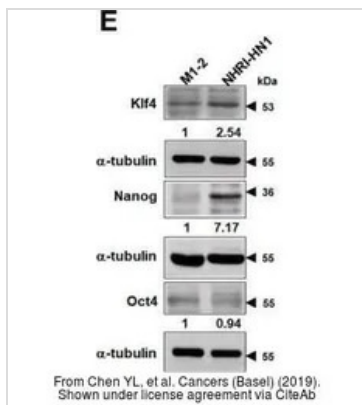
Mouse tissue extract (50 µg) was separated by 10% SDS-PAGE, and the membrane was blotted with Oct4 antibody [GT486] (GTX627419) diluted at 1:1000. The HRP-conjugated anti-mouse IgG antibody (GTX213111-01) was used to detect the primary antibody.


GTX627419 WB Image

The data was published in the 2020 in Sci Rep. [PMID: 32398775](https://pubmed.ncbi.nlm.nih.gov/32398775/)



For full product information, images and publications, please visit our [website](https://www.genetex.com).



GTX627419 WB Image

The data was published in the journal Cancers (Basel) in 2019. [PMID: 31878324](https://pubmed.ncbi.nlm.nih.gov/31878324/)



For full product information, images and publications, please visit our [website](https://www.genetex.com).

Nanog antibody [GT3312]

Cat. No. GTX627421

Host	Mouse
Clonality	Monoclonal
Isotype	IgG2b
Applications	WB, ICC/IF, FCM
Reactivity	Human, Mouse

References (27)

★★★★★ Review (3)

Package

100 µl, 25 µl

PRODUCT

Summary

Nanog antibody recognizes Nanog protein, a 35 kDa transcription factor that maintains pluripotency and the self-renewal feature of embryonic stem cells. It is one of the Thomson factors (i.e., NANOG, OCT4, SOX2, and LIN28) that induce a stable intrinsic pluripotency network to generate induced pluripotent stem cells. In addition, NANOG expression is elevated in cancer stem cells and correlates with a worse prognosis for many tumor types.

Applications

Application Note

*Optimal dilutions/concentrations should be determined by the researcher.

Suggested dilution	Recommended dilution
WB	1:500-1:3000
ICC/IF	Assay dependent
FCM	1:50-1:200

Not tested in other applications.

Calculated MW 35 kDa. ([Note](#))

Properties

Form	Liquid
Buffer	PBS
Preservative	No preservative
Storage	Store as concentrated solution. Centrifuge briefly prior to opening vial. For short-term storage (1-2 weeks), store at 4°C. For long-term storage, aliquot and store at -20°C or below. Avoid multiple freeze-thaw cycles.
Concentration	1 mg/ml (Please refer to the vial label for the specific concentration.)
Immunogen	Recombinant protein encompassing a sequence within the center region of human NANOG. The exact sequence is proprietary.
Purification	Affinity purified by Protein G.
Conjugation	Unconjugated

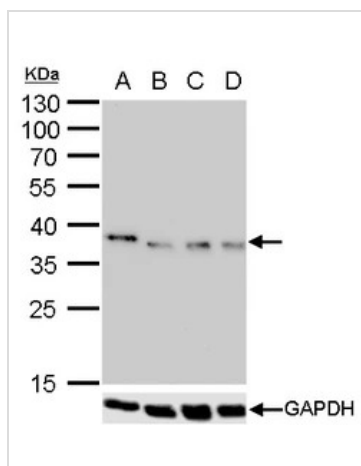


For full product information, images and publications, please visit our [website](#).

For laboratory research use only. Not for any clinical, therapeutic, or diagnostic use in humans or animals. Not for animal or human consumption.

Note

Purchasers shall not, and agree not to enable third parties to, analyze, copy, reverse engineer or otherwise attempt to determine the structure or sequence of the product.

DATA IMAGES

GTX627421 WB Image

NANOG antibody [GT3312] validation by siRNA knock-down.

Upperpanel: NANOG antibody [GT3312] GTX627421

Lower panel: GAPDH antibody (GTX100118)

A. 30 µg Tera-2 whole cell lysate/extract

B. 30 µg whole cell lysate/extract of NANOG siRNA#1-transfected Tera-2 cells

C. 30 µg whole cell lysate/extract of NANOG siRNA#2-transfected Tera-2 cells

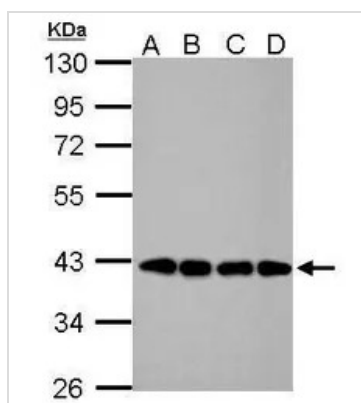
D. 30 µg whole cell lysate/extract of NANOG siRNA#3-transfected Tera-2 cells

10% SDS-PAGE

NANOG antibody [GT3312] (GTX627421) dilution: 1:1000

GAPDH antibody (GTX100118) dilution: 1:10000

The HRP-conjugated anti-mouse IgG antibody (GTX213111-01) was used to detect the primary antibody.


GTX627421 WB Image

Sample (30 µg of whole cell lysate)

A: 293T

B: A431

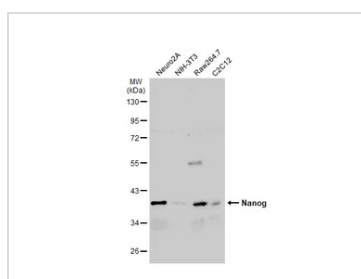
C: HeLa

D: HepG2

10% SDS PAGE

GTX627421 diluted at 1:1000

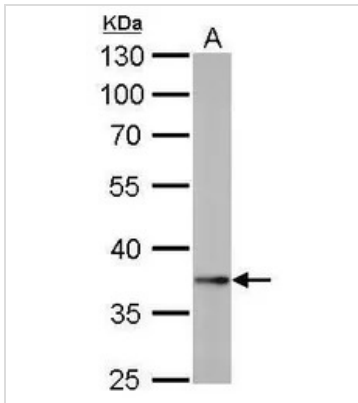
The HRP-conjugated anti-mouse IgG antibody (GTX213111-01) was used to detect the primary antibody.


GTX627421 WB Image

Various whole cell extracts (30 µg) were separated by 10% SDS-PAGE, and the membrane was blotted with Nanog antibody [GT3312] (GTX627421) diluted at 1:500. The HRP-conjugated anti-mouse IgG antibody (GTX213111-01) was used to detect the primary antibody.



For full product information, images and publications, please visit our [website](https://www.genetex.com).



GTX627421 WB Image

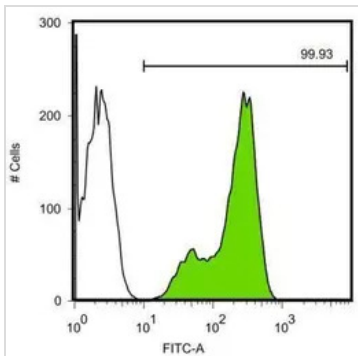
NANOG antibody [GT3312] detects NANOG protein by western blot analysis.

A. 30 µg human ESC whole cell lysate/extract

10% SDS-PAGE

NANOG antibody [GT3312] (GTX627421) dilution: 1:1000

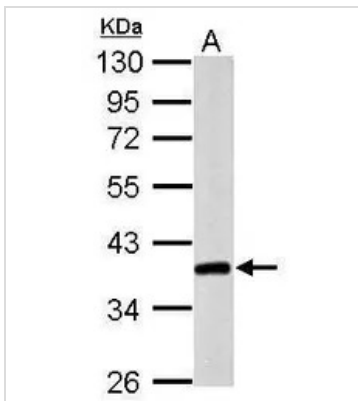
The HRP-conjugated anti-mouse IgG antibody (GTX213111-01) was used to detect the primary antibody.



GTX627421 FCM Image

NANOG antibody [GT3312] detects NANOG protein by flow cytometry analysis. Sample: Human embryonic stem cells

Black: Isotype control dilution: 1:50 Green: NANOG antibody [GT3312] dilution: 1:50



GTX627421 WB Image

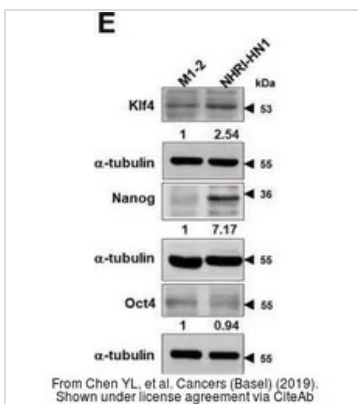
Sample (20 µg of whole cell lysate)

A: mouse ESC

10% SDS PAGE

GTX627421 diluted at 1:1000

The HRP-conjugated anti-mouse IgG antibody (GTX213111-01) was used to detect the primary antibody.

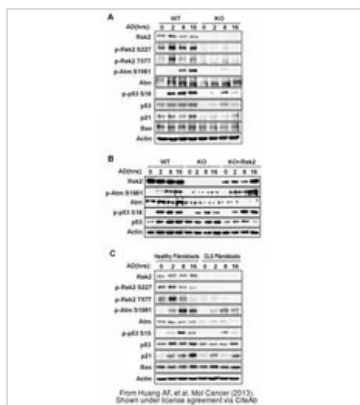


GTX627421 WB Image

The data was published in the journal Cancers (Basel) in 2019. [PMID: 31878324](https://pubmed.ncbi.nlm.nih.gov/31878324/)



For full product information, images and publications, please visit our [website](https://www.genetex.com).



GTX627421 WB Image

The data was published in the journal Mol Cancer in 2013. [PMID: 24094005](#)



For full product information, images and publications, please visit our [website](#).

Lin28A antibody [GT1086]

Cat. No. GTX628139

Host	Mouse
Clonality	Monoclonal
Isotype	IgG2b
Applications	WB, ICC/IF, IHC-P, FCM
Reactivity	Human

 Review (2)Package
100 µl, 25 µl

Applications

Application Note

*Optimal dilutions/concentrations should be determined by the researcher.

Suggested dilution	Recommended dilution
WB	1:500-1:3000
ICC/IF	1:100-1:1000
IHC-P	1:100-1:1000
FCM	1:50-1:200

Not tested in other applications.

Calculated MW 23 kDa. ([Note](#))

Properties

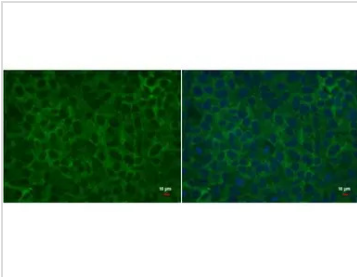
Form	Liquid
Buffer	PBS
Preservative	No preservative
Storage	Store as concentrated solution. Centrifuge briefly prior to opening vial. For short-term storage (1-2 weeks), store at 4°C. For long-term storage, aliquot and store at -20°C or below. Avoid multiple freeze-thaw cycles.
Concentration	1 mg/ml (Please refer to the vial label for the specific concentration.)
Immunogen	Recombinant protein encompassing a sequence within the center region of human Lin28A. The exact sequence is proprietary.
Purification	Affinity purified by Protein G.
Conjugation	Unconjugated

For full product information, images and publications, please visit our [website](#).

For laboratory research use only. Not for any clinical, therapeutic, or diagnostic use in humans or animals. Not for animal or human consumption.

Note

Purchasers shall not, and agree not to enable third parties to, analyze, copy, reverse engineer or otherwise attempt to determine the structure or sequence of the product.

DATA IMAGES

GTX628139 ICC/IF Image

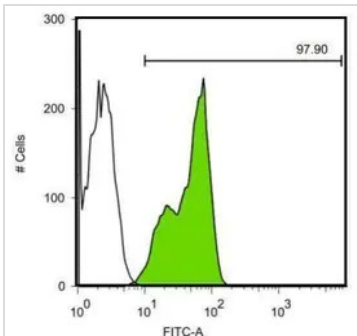
LIN28 antibody detects LIN28 protein by immunofluorescent analysis.

Sample: human embryonic stem cell were fixed in 4% paraformaldehyde for 15 min.

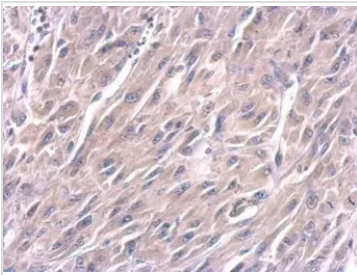
Green: LIN28 protein stained by LIN28 antibody (GTX628139) diluted at 1:500.

Blue: Hoechst 33342 staining.

Scale bar = 10 μ m.


GTX628139 FCM Image

Lin28A antibody [GT1086] detects Lin28A protein by flow cytometry analysis. Sample: Human embryonic stem cells Black: Isotype control dilution: 1:50 Green: Lin28A antibody [GT1086] dilution: 1:50


GTX628139 IHC-P Image

Lin28A antibody detects Lin28A protein at cytosol on U87 xenograft by immunohistochemical analysis.

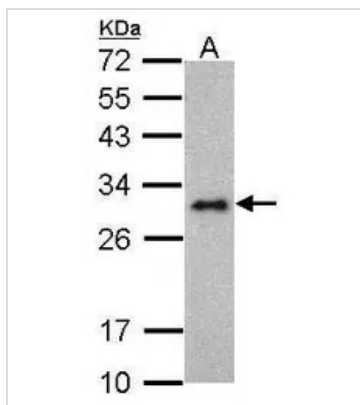
Sample: Paraffin-embedded U87 xenograft.

Lin28A antibody (GTX628139) dilution: 1:100.

Antigen Retrieval: Trilogy™ (EDTA based, pH 8.0) buffer, 15min



For full product information, images and publications, please visit our [website](https://www.genetex.com).



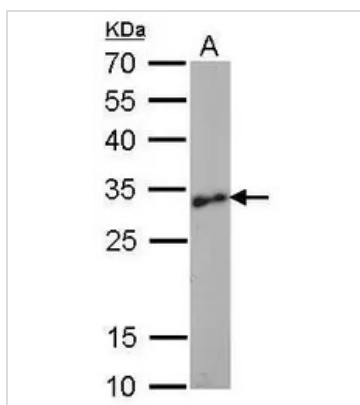
GTX628139 WB Image

Sample (30 ug of whole cell lysate)

A: NT2D1

12% SDS PAGE

GTX628139 diluted at 1:1000



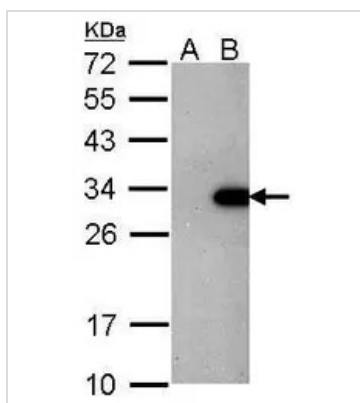
GTX628139 WB Image

Lin28A antibody [GT717] detects Lin28A protein by Western blot analysis.

A. 30 µg human ESC whole cell lysate/extract

12 % SDS-PAGE

Lin28A antibody [GT717] (GTX628139) dilution: 1:1000



GTX628139 WB Image

Sample (30 ug of whole cell lysate)

A: Non-transfected HeLa lysates

B: LIN28 transfected HeLa lysates

12% SDS PAGE

GTX628139 diluted at 1:1000



For full product information, images and publications, please visit our [website](https://www.genetex.com).