

GTX300075

Intermediate Filament Antibody Panel

Product Content

Cat No	Product Name	Reactivity	Application	Package
GTX100619	Vimentin antibody	Human, Mouse, Rat, Cat, Dog	WB, ICC/IF, IHC-P, IHC-Fr, IP, ELISA, IHC, Sandwich ELISA, IHC (Free Floating)	25 µl
GTX103557	Desmin antibody	Human, Mouse, Rat, Cat, Dog, Chicken, Pig	WB, ICC/IF, IHC-P, IHC-Fr, FACS	25 µl
GTX120881	Keratin 36 antibody	Human	WB, ICC/IF, IHC-P	25 µl
GTX213110-01	Goat Anti-Rabbit IgG antibody (HRP)	Rabbit	WB, IHC-P, ELISA	25 µl

Note

For In vitro laboratory use only. Not for any clinical, therapeutic, or diagnostic use in humans or animals. Not for animal or human consumption.



For full product information, images and publications, please visit our [website](#).

Vimentin antibody

Cat. No. GTX100619

Host	Rabbit
Clonality	Polyclonal
Isotype	IgG
Application	WB, ICC/IF, IHC-P, IHC-Fr, IP, ELISA, IHC, Sandwich ELISA, IHC (Free Floating)
Reactivity	Human, Mouse, Rat, Cat, Dog

Reference (127)

★★★★★ Review (6)

Package

100 µl, 25 µl

PRODUCT

Summary

Vimentin antibody detects vimentin, a type III intermediate filament protein with a predicted molecular weight of 54 kDa. Vimentin is highly expressed in cells of mesodermal origin as well as in some ectodermal cells, and is often used as a marker of mesenchymal stem cells. It is also utilized in combination with E-cadherin to study the morphological and phenotypic changes in cells undergoing epithelial-mesenchymal transition during development and tumor metastasis. In addition, vimentin antibody is a valuable reagent to stain neuronal precursors and developing radial glia cells.

APPLICATION

Application Note

*Optimal dilutions/concentrations should be determined by the researcher.

Suggested dilution	Recommended dilution
WB	1:5000-1:50000
ICC/IF	1:100-1:1000
IHC-P	1:100-1:1000
IHC-Fr	Assay dependent
IP	1:100-1:500
ELISA	Assay dependent
IHC	Assay dependent
Sandwich ELISA	Assay dependent
IHC (Free Floating)	Assay dependent

Note : Capture : GTX629743 / GTX629744, Detection : GTX100619

Not tested in other applications.

Calculated MW

54 kDa. ([Note](#))

Observed MW

56 kDa. The observed M.W. is based on the following publication. PMID: 23185433 and 24926698

PROPERTIES

Form

Liquid



For full product information, images and publications, please visit our [website](#).

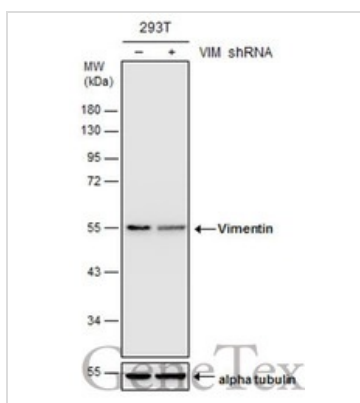
Buffer	PBS, 20% Glycerol
Preservative	0.025% ProClin 300
Storage	Store as concentrated solution. Centrifuge briefly prior to opening vial. For short-term storage (1-2 weeks), store at 4°C. For long-term storage, aliquot and store at -20°C or below. Avoid multiple freeze-thaw cycles.
Concentration	1.14 mg/ml (Please refer to the vial label for the specific concentration.)
Immunogen	Recombinant protein encompassing a sequence within the center region of human Vimentin. The exact sequence is proprietary.
Purification	Purified by antigen-affinity chromatography.
Conjugation	Unconjugated

Note

For laboratory research use only. Not for any clinical, therapeutic, or diagnostic use in humans or animals. Not for animal or human consumption.

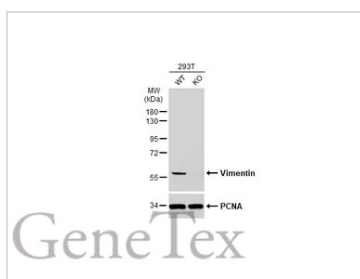
Purchasers shall not, and agree not to enable third parties to, analyze, copy, reverse engineer or otherwise attempt to determine the structure or sequence of the product.

DATA IMAGES



GTX100619 WB Image

Non-transfected (-) and transfected (+) 293T whole cell extracts (30 µg) were separated by 10% SDS-PAGE, and the membrane was blotted with Vimentin antibody (GTX100619) diluted at 1:20000.

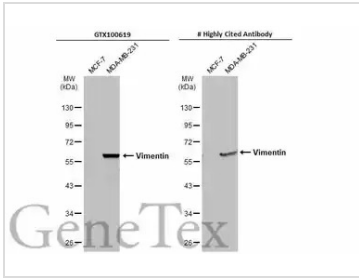


GTX100619 WB Image

Wild-type (WT) and Vimentin knockout (KO) 293T cell extracts (30 µg) were separated by 10% SDS-PAGE, and the membrane was blotted with Vimentin antibody (GTX100619) diluted at 1:50000. The HRP-conjugated anti-rabbit IgG antibody (GTX213110-01) was used to detect the primary antibody.



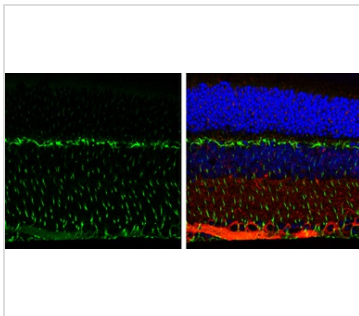
For full product information, images and publications, please visit our [website](https://www.genetex.com).



GTX100619 WB Image

Various whole cell extracts (30 µg) were separated by 10% SDS-PAGE, and the membranes were blotted with Vimentin antibody (GTX100619) diluted at 1:5000 and competitor's antibody diluted at 1:5000. The HRP-conjugated anti-rabbit IgG antibody (GTX213110-01) was used to detect the primary antibody.

*The competitor is not affiliated with GeneTex and does not endorse this product.



GTX100619 IHC-P Image

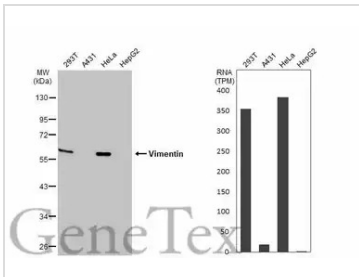
Vimentin antibody detects Vimentin protein expression by immunohistochemical analysis.

Sample: Paraffin-Embedded adult mouse retina.

Green: Vimentin protein stained by Vimentin antibody (GTX100619) diluted at 1:250.

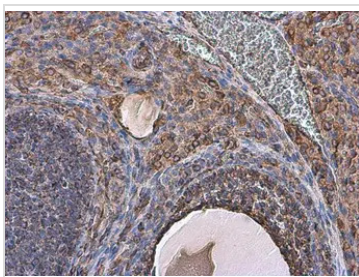
Red: beta Tubulin 3/ TUJ1, stained by beta Tubulin 3/ TUJ1 antibody [GT11710] (GTX631836) diluted at 1:500.

Blue: Fluoroshield with DAPI (GTX30920).



GTX100619 WB Image

Various whole cell extracts (30 µg) were separated by 10% SDS-PAGE, and the membrane was blotted with Vimentin antibody (GTX100619) diluted at 1:50000. The HRP-conjugated anti-rabbit IgG antibody (GTX213110-01) was used to detect the primary antibody. Corresponding RNA expression data for the same cell lines are based on Human Protein Atlas program.



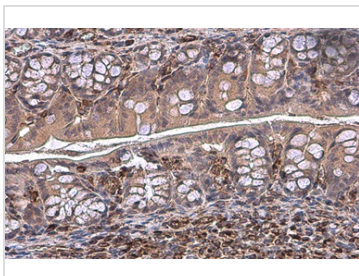
GTX100619 IHC-P Image

Vimentin antibody detects Vimentin protein at cell membrane and cytoplasm in rat ovary by immunohistochemical analysis.

Sample: Paraffin-embedded rat ovary.

Vimentin antibody (GTX100619) diluted at 1:500.

Antigen Retrieval: Citrate buffer, pH 6.0, 15 min



GTX100619 IHC-P Image

Vimentin antibody detects Vimentin protein at cytoplasm by immunohistochemical analysis.

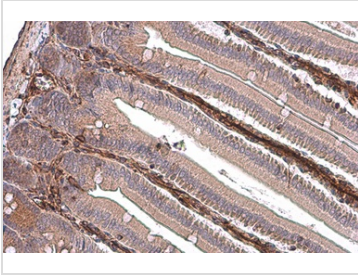
Sample: Paraffin-embedded mouse colon.

Vimentin stained by Vimentin antibody (GTX100619) diluted at 1:500.

Antigen Retrieval: Citrate buffer, pH 6.0, 15 min



For full product information, images and publications, please visit our [website](https://www.genetex.com).



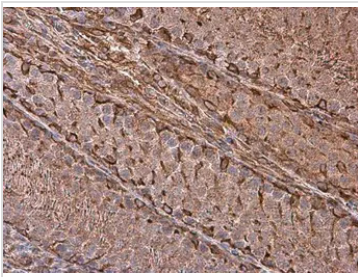
GTX100619 IHC-P Image

Vimentin antibody detects Vimentin protein at cytoplasm by immunohistochemical analysis.

Sample: Paraffin-embedded mouse intestine.

Vimentin stained by Vimentin antibody (GTX100619) diluted at 1:500.

Antigen Retrieval: Citrate buffer, pH 6.0, 15 min



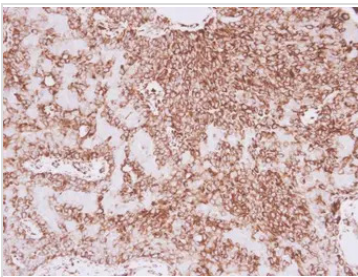
GTX100619 IHC-P Image

Vimentin antibody detects Vimentin protein at cell membrane and cytoplasm in rat testis by immunohistochemical analysis.

Sample: Paraffin-embedded rat testis.

Vimentin antibody (GTX100619) diluted at 1:500.

Antigen Retrieval: Citrate buffer, pH 6.0, 15 min



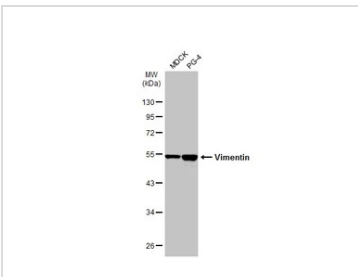
GTX100619 IHC-P Image

Vimentin antibody detects Vimentin protein at cytoplasm in human lung adenocarcinoma by immunohistochemical analysis.

Sample: Paraffin-embedded human lung adenocarcinoma.

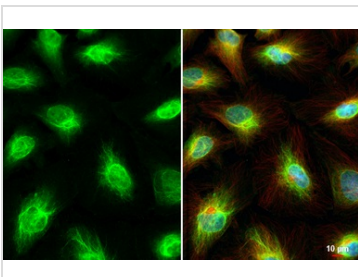
Vimentin antibody (GTX100619) diluted at 1:500.

Antigen Retrieval: Trilogy™ (EDTA based, pH 8.0) buffer, 15min



GTX100619 WB Image

Various whole cell extracts (30 µg) were separated by 10% SDS-PAGE, and the membrane was blotted with Vimentin antibody (GTX100619) diluted at 1:20000. The HRP-conjugated anti-rabbit IgG antibody (GTX213110-01) was used to detect the primary antibody.



GTX100619 ICC/IF Image

Vimentin antibody detects Vimentin protein at cytoskeleton and nucleus by immunofluorescent analysis.

Sample: HeLa cells were fixed in 4% paraformaldehyde at RT for 15 min.

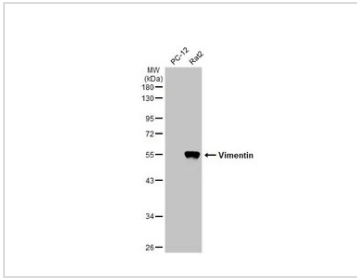
Green: Vimentin stained by Vimentin antibody (GTX100619) diluted at 1:500.

Red: alpha Tubulin, a cytoskeleton marker, stained by alpha Tubulin antibody [GT114] (GTX628802) diluted at 1:1000.

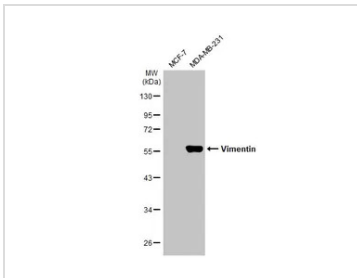
Blue: Fluoroshield with DAPI (GTX30920).



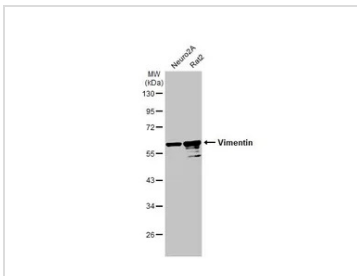
For full product information, images and publications, please visit our [website](https://www.genetex.com).


GTK100619 WB Image

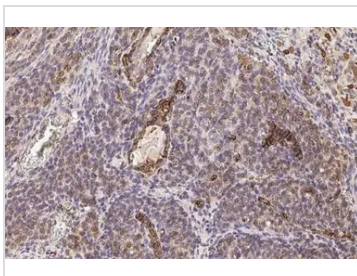
Various whole cell extracts (30 µg) were separated by 10% SDS-PAGE, and the membrane was blotted with Vimentin antibody (GTK100619) diluted at 1:10000. The HRP-conjugated anti-rabbit IgG antibody (GTK213110-01) was used to detect the primary antibody.


GTK100619 WB Image

Various extracts (30 µg) were separated by 10% SDS-PAGE, and the membrane was blotted with Vimentin antibody (GTK100619) diluted at 1:5000. The HRP-conjugated anti-rabbit IgG antibody (GTK213110-01) was used to detect the primary antibody.


GTK100619 WB Image

Various whole cell extracts (30 µg) were separated by 10% SDS-PAGE, and the membrane was blotted with Vimentin antibody (GTK100619) diluted at 1:5000. The HRP-conjugated anti-rabbit IgG antibody (GTK213110-01) was used to detect the primary antibody.

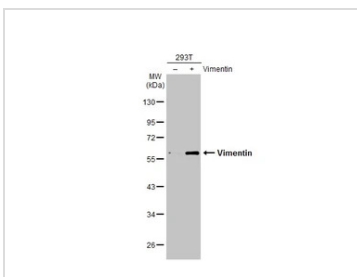

GTK100619 IHC-P Image

Vimentin antibody detects Vimentin protein at cell membrane and cytoplasm by immunohistochemical analysis.

Sample: Paraffin-embedded rat ovary.

Vimentin stained by Vimentin antibody (GTK100619) diluted at 1:500.

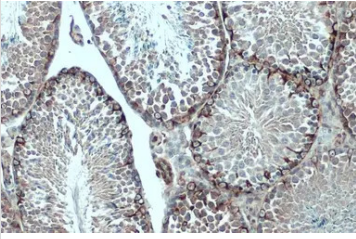
Antigen Retrieval: Citrate buffer, pH 6.0, 15 min


GTK100619 WB Image

Non-transfected (–) and transfected (+) 293T whole cell extracts (10 µg) were separated by 10% SDS-PAGE, and the membrane was blotted with Vimentin antibody (GTK100619) diluted at 1:10000. The HRP-conjugated anti-rabbit IgG antibody (GTK213110-01) was used to detect the primary antibody.



For full product information, images and publications, please visit our [website](https://www.genetex.com).



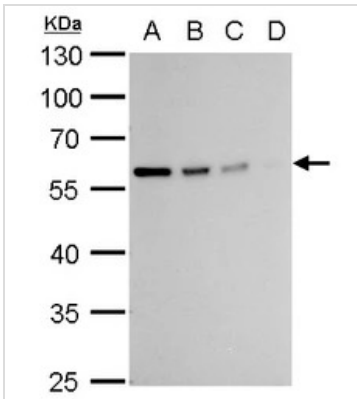
GTX100619 IHC-P Image

Vimentin antibody detects Vimentin protein at cytoplasm by immunohistochemical analysis.

Sample: Paraffin-embedded mouse testis.

Vimentin stained by Vimentin antibody (GTX100619) diluted at 1:500.

Antigen Retrieval: Citrate buffer, pH 6.0, 15



GTX100619 WB Image

Vimentin antibody detects Vimentin protein by western blot analysis.

A. 20 μ g 293T whole cell lysate/extract

B. 10 μ g 293T whole cell lysate/extract

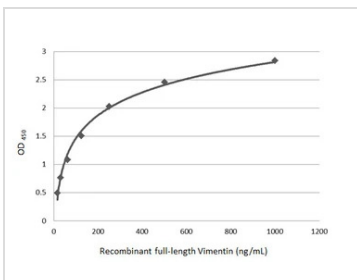
C. 5 μ g 293T whole cell lysate/extract

D. 1 μ g 293T whole cell lysate/extract

10% SDS-PAGE

Vimentin antibody (GTX100619) dilution: 1:10000

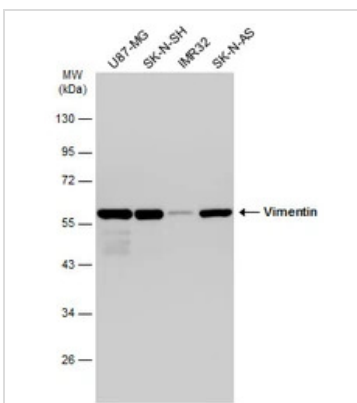
The HRP-conjugated anti-rabbit IgG antibody (GTX213110-01) was used to detect the primary antibody.



GTX100619 ELISA Image

Sandwich ELISA detection of recombinant full-length Vimentin protein using GTX629743 as capture antibody at concentration of 5 μ g/mL and GTX100619 as detection antibody at concentration of 1 μ g/mL.

Rabbit IgG antibody (HRP) (GTX213110-01) was diluted at 1:10000 and used to detect the primary antibody.

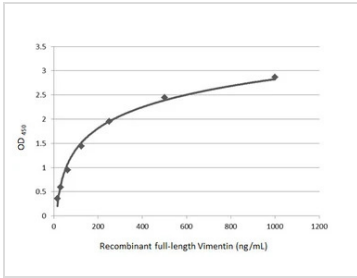


GTX100619 WB Image

Various whole cell extracts (30 μ g) were separated by 10% SDS-PAGE, and the membrane was blotted with Vimentin antibody (GTX100619) diluted at 1:50000. The HRP-conjugated anti-rabbit IgG antibody (GTX213110-01) was used to detect the primary antibody.

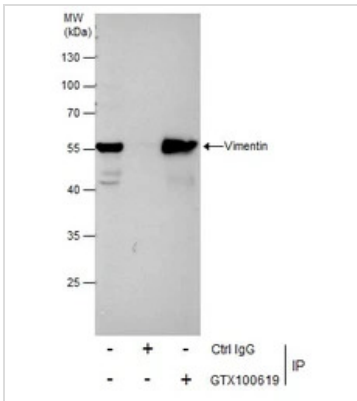


For full product information, images and publications, please visit our [website](http://www.genetex.com).



GTx100619 ELISA Image

Sandwich ELISA detection of recombinant full-length Vimentin protein using GTX629744 as capture antibody at concentration of 5 µg/mL and GTX100619 as detection antibody at concentration of 1 µg/mL. Rabbit IgG antibody (HRP) (GTX213110-01) was diluted at 1:10000 and used to detect the primary antibody.

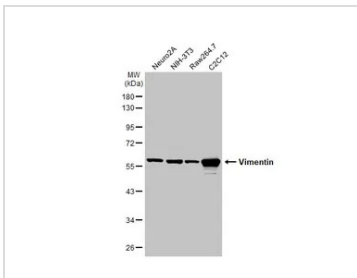


GTx100619 IP Image

Immunoprecipitation of Vimentin protein from HeLa whole cell extracts using 5 µg of Vimentin antibody (GTX100619).

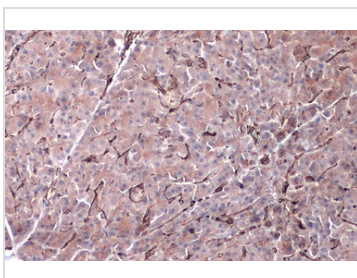
Western blot analysis was performed using Vimentin antibody (GTX100619).

EasyBlot anti-Rabbit IgG (GTX221666-01) was used as a secondary reagent.



GTx100619 WB Image

Various whole cell extracts (30 µg) were separated by 10% SDS-PAGE, and the membrane was blotted with Vimentin antibody (GTX100619) diluted at 1:5000. The HRP-conjugated anti-rabbit IgG antibody (GTX213110-01) was used to detect the primary antibody.



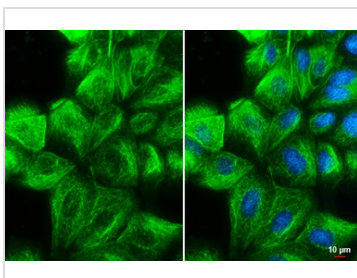
GTx100619 IHC-P Image

Vimentin antibody detects Vimentin protein by immunohistochemical analysis.

Sample: Paraffin-embedded dog pancreas.

Vimentin stained by Vimentin antibody (GTX100619) diluted at 1:500.

Antigen Retrieval: Citrate buffer, pH 6.0, 15 min



GTx100619 ICC/IF Image

Vimentin antibody detects Vimentin protein at cytoskeleton by immunofluorescent analysis.

Sample: MDCK cells were fixed in 4% paraformaldehyde at RT for 15 min.

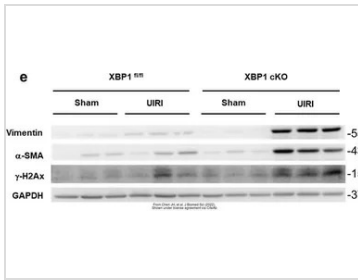
Green: Vimentin stained by Vimentin antibody (GTX100619) diluted at 1:500.

Blue: Hoechst 33342 staining.

Scale bar= 10 µm.

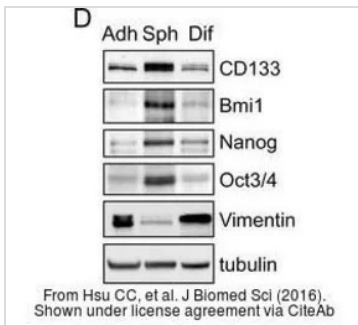


For full product information, images and publications, please visit our [website](https://www.genetex.com).



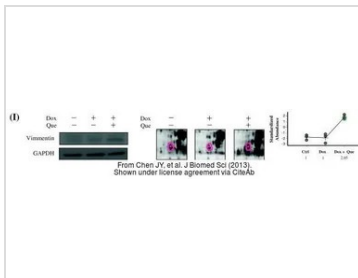
GTXT100619 WB Image

The data was published in the 2022 in J Biomed Sci. [PMID: 35765067](#)



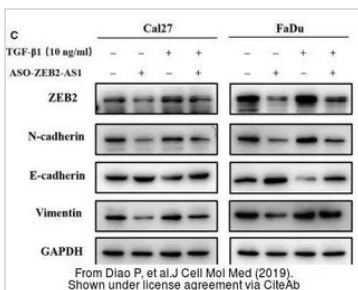
GTXT100619 WB Image

The data was published in the journal J Biomed Sci in 2016. [PMID: 27863490](#)



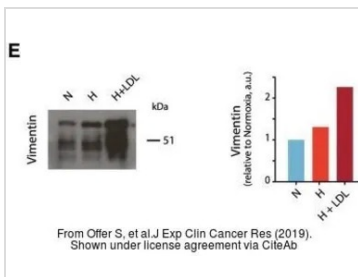
GTXT100619 WB Image

The data was published in the journal J Biomed Sci in 2013. [PMID: 24359494](#)



GTXT100619 WB Image

The data was published in the journal J Cell Mol Med in 2019. [PMID: 30950191](#)

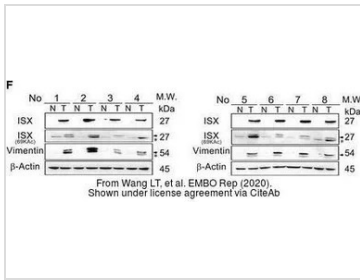


GTXT100619 WB Image

The data was published in the journal J Exp Clin Cancer Res in 2019. [PMID: 31174567](#)

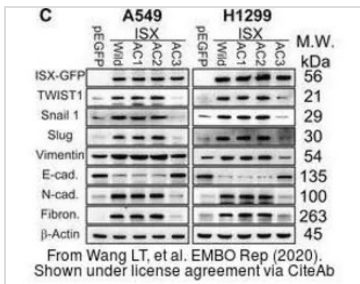


For full product information, images and publications, please visit our [website](#).



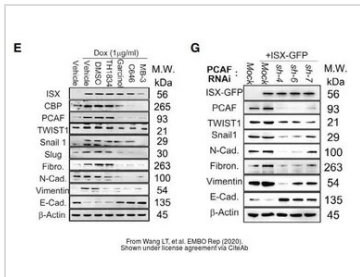
GTx100619 WB Image

The data was published in the journal EMBO Rep in 2020. [PMID: 31908141](#)



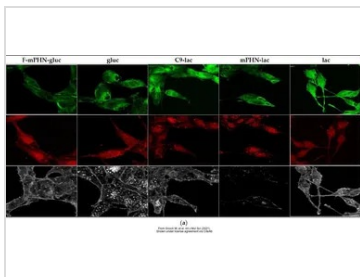
GTx100619 WB Image

The data was published in the journal EMBO Rep in 2020. [PMID: 31908141](#)



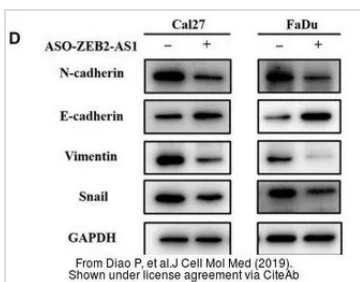
GTx100619 WB Image

The data was published in the journal EMBO Rep in 2020. [PMID: 31908141](#)



GTx100619 ICC/IF Image

The data was published in the journal Int J Mol Sci. [PMID: 34281292](#)

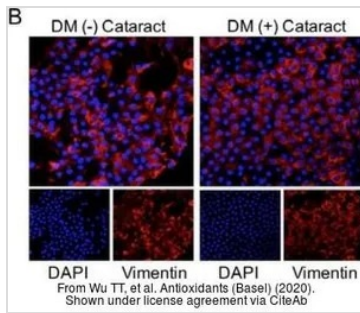


GTx100619 WB Image

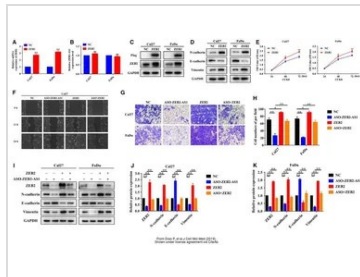
The data was published in the journal J Cell Mol Med in 2019. [PMID: 30950191](#)



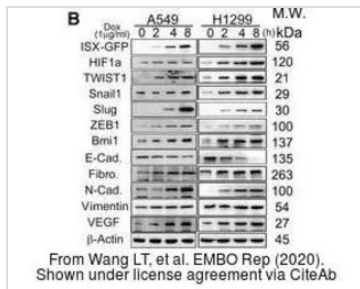
For full product information, images and publications, please visit our [website](#).


GTx100619 IHC Image

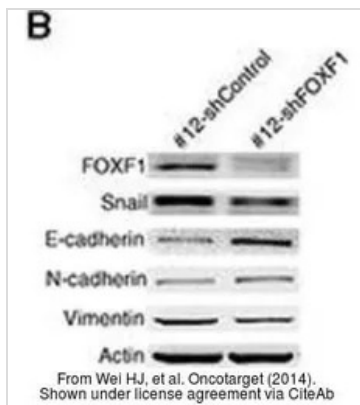
The data was published in the journal Antioxidants (Basel) in 2020. [PMID: 32218152](https://pubmed.ncbi.nlm.nih.gov/32218152/)


GTx100619 WB Image

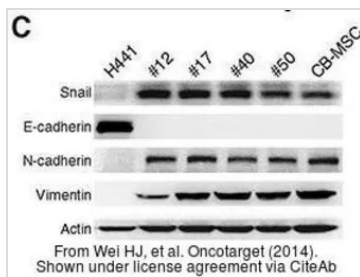
The data was published in the journal J Cell Mol Med in 2019. [PMID: 30950191](https://pubmed.ncbi.nlm.nih.gov/30950191/)


GTx100619 WB Image

The data was published in the journal EMBO Rep in 2020. [PMID: 31908141](https://pubmed.ncbi.nlm.nih.gov/31908141/)


GTx100619 WB Image

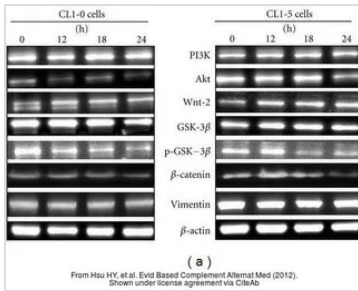
The data was published in the journal Oncotarget in 2014. [PMID: 25237908](https://pubmed.ncbi.nlm.nih.gov/25237908/)


GTx100619 WB Image

The data was published in the journal Oncotarget in 2014. [PMID: 25237908](https://pubmed.ncbi.nlm.nih.gov/25237908/)

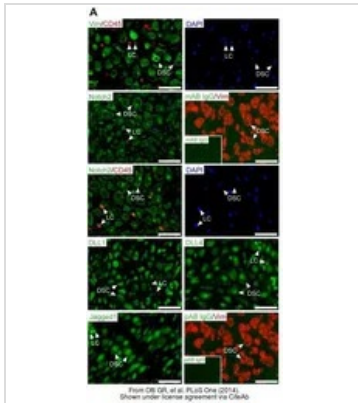


For full product information, images and publications, please visit our [website](https://www.genetex.com).



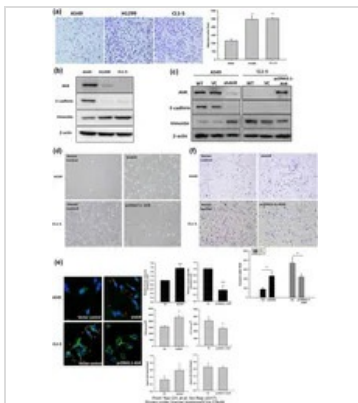
GTx100619 WB Image

The data was published in the journal Evid Based Complement Alternat Med in 2012. [PMID: 23320038](#)



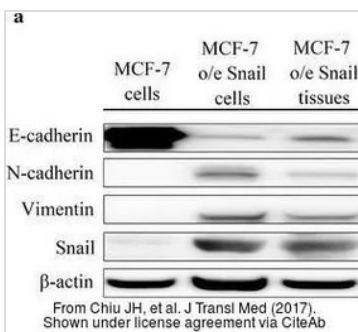
GTx100619 IHC-P Image

The data was published in the journal PLoS One in 2014. [PMID: 25397403](#)



GTx100619 WB Image

The data was published in the journal Sci Rep in 2017. [PMID: 28195146](#)

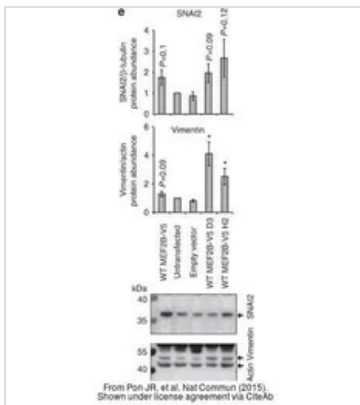


GTx100619 WB Image

The data was published in the journal J Transl Med in 2017. [PMID: 28472954](#)

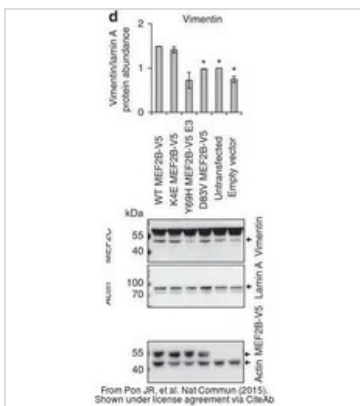


For full product information, images and publications, please visit our [website](#).



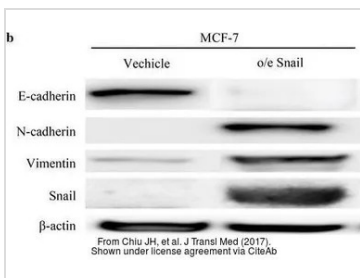
GTx100619 WB Image

The data was published in the journal Nat Commun in 2015. [PMID: 26245647](https://pubmed.ncbi.nlm.nih.gov/26245647/)



GTx100619 WB Image

The data was published in the journal Nat Commun in 2015. [PMID: 26245647](https://pubmed.ncbi.nlm.nih.gov/26245647/)



GTx100619 WB Image

The data was published in the journal J Transl Med in 2017. [PMID: 28472954](https://pubmed.ncbi.nlm.nih.gov/28472954/)



For full product information, images and publications, please visit our [website](https://www.genetex.com).

Desmin antibody

Cat. No. GTX103557

Host	Rabbit
Clonality	Polyclonal
Isotype	IgG
Application	WB, ICC/IF, IHC-P, IHC-Fr, FACS
Reactivity	Human, Mouse, Rat, Cat, Dog, Chicken, Pig

Reference (17)

Package

100 µl, 25 µl

APPLICATION

Application Note

*Optimal dilutions/concentrations should be determined by the researcher.

Suggested dilution	Recommended dilution
WB	1:500-1:10000
ICC/IF	Assay dependent
IHC-P	1:100-1:1000
IHC-Fr	Assay dependent
FACS	Assay dependent

Not tested in other applications.

Calculated MW 54 kDa. ([Note](#))

PROPERTIES

Form	Liquid
Buffer	PBS, 20% Glycerol
Preservative	0.025% ProClin 300
Storage	Store as concentrated solution. Centrifuge briefly prior to opening vial. For short-term storage (1-2 weeks), store at 4°C. For long-term storage, aliquot and store at -20°C or below. Avoid multiple freeze-thaw cycles.
Concentration	1.06 mg/ml (Please refer to the vial label for the specific concentration.)
Immunogen	Recombinant protein encompassing a sequence within the center region of human Desmin. The exact sequence is proprietary.
Purification	Purified by antigen-affinity chromatography.
Conjugation	Unconjugated



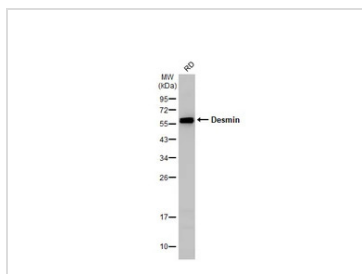
For full product information, images and publications, please visit our [website](#).

For laboratory research use only. Not for any clinical, therapeutic, or diagnostic use in humans or animals. Not for animal or human consumption.

Note

Purchasers shall not, and agree not to enable third parties to, analyze, copy, reverse engineer or otherwise attempt to determine the structure or sequence of the product.

DATA IMAGES



GTx103557 WB Image

Whole cell extract (30 µg) was separated by 12% SDS-PAGE, and the membrane was blotted with Desmin antibody (GTx103557) diluted at 1:2000. The HRP-conjugated anti-rabbit IgG antibody (GTx213110-01) was used to detect the primary antibody.



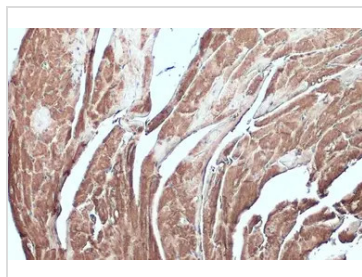
GTx103557 IHC-P Image

Desmin antibody detects Desmin protein at cytosol on mouse skeletal muscle by immunohistochemical analysis.

Sample: Paraffin-embedded mouse skeletal muscle.

Desmin antibody (GTx103557) dilution: 1:500.

Antigen Retrieval: Trilogy™ (EDTA based, pH 8.0) buffer, 15min



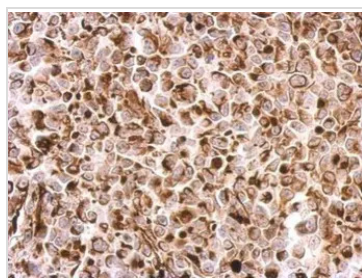
GTx103557 IHC-P Image

Desmin antibody detects Desmin protein at cytoplasm by immunohistochemical analysis.

Sample: Paraffin-embedded mouse heart.

Desmin stained by Desmin antibody (GTx103557) diluted at 1:500.

Antigen Retrieval: Citrate buffer, pH 6.0, 15 min



GTx103557 IHC-P Image

Desmin antibody detects DES protein at cytosol on H1299 xenograft by immunohistochemical analysis.

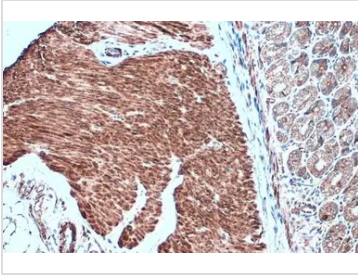
Sample: Paraffin-embedded H1299 xenograft.

Desmin antibody (GTx103557) dilution: 1:500.

Antigen Retrieval: Trilogy™ (EDTA based, pH 8.0) buffer, 15min



For full product information, images and publications, please visit our [website](https://www.genetex.com).



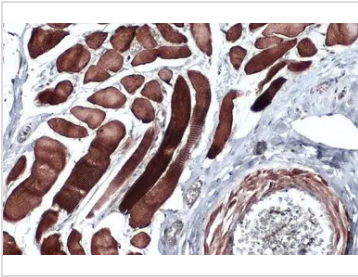
GTx103557 IHC-P Image

Desmin antibody detects Desmin protein at cytoplasm by immunohistochemical analysis.

Sample: Paraffin-embedded mouse smooth muscle.

Desmin stained by Desmin antibody (GTx103557) diluted at 1:500.

Antigen Retrieval: Citrate buffer, pH 6.0, 15 min



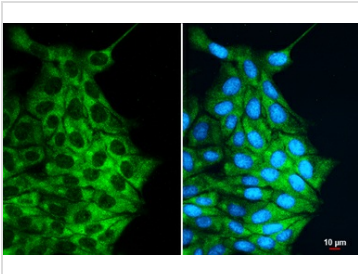
GTx103557 IHC-P Image

Desmin antibody detects Desmin protein at cell membrane and cytoplasm by immunohistochemical analysis.

Sample: Paraffin-embedded dog muscle.

Desmin stained by Desmin antibody (GTx103557) diluted at 1:500.

Antigen Retrieval: Citrate buffer, pH 6.0, 15 min

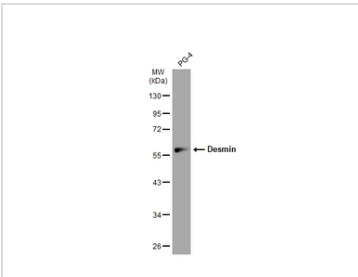


GTx103557 ICC/IF Image

Desmin antibody detects Desmin protein at cytoplasm by immunofluorescent analysis.

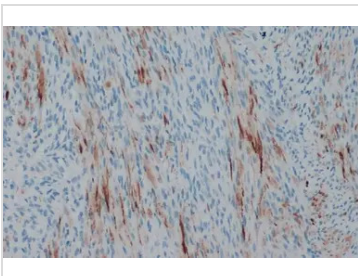
Sample: MDCK cells were fixed in 4% paraformaldehyde at RT for 15 min.

Green: Desmin stained by Desmin antibody (GTx103557) diluted at 1:500.



GTx103557 WB Image

Whole cell extract (30 μg) was separated by 10% SDS-PAGE, and the membrane was blotted with Desmin antibody (GTx103557) diluted at 1:500. The HRP-conjugated anti-rabbit IgG antibody (GTx213110-01) was used to detect the primary antibody.



GTx103557 IHC-P Image

Desmin antibody detects Desmin protein at cell membrane and cytoplasm by immunohistochemical analysis.

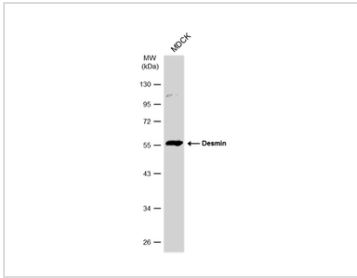
Sample: Paraffin-embedded dog malignant soft tissue sarcoma.

Desmin stained by Desmin antibody (GTx103557) diluted at 1:500.

Antigen Retrieval: Citrate buffer, pH 6.0, 15 min

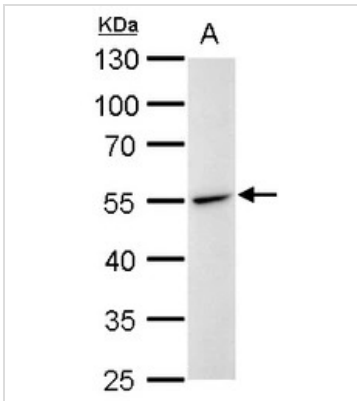


For full product information, images and publications, please visit our [website](https://www.genetex.com).



GTx103557 WB Image

Whole cell extract (30 µg) was separated by 10% SDS-PAGE, and the membrane was blotted with Desmin antibody (GTx103557) diluted at 1:500. The HRP-conjugated anti-rabbit IgG antibody (GTx213110-01) was used to detect the primary antibody.



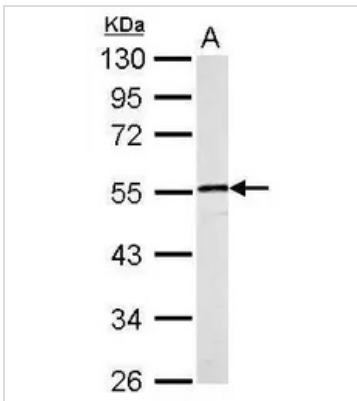
GTx103557 WB Image

Desmin antibody detects Desmin protein by western blot analysis.

A. 30 µg Rat2 whole cell lysate/extract

10 % SDS-PAGE

Desmin antibody (GTx103557) dilution: 1:1000



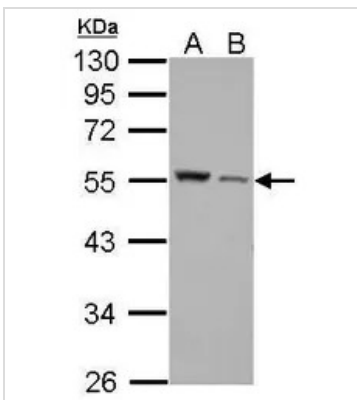
GTx103557 WB Image

Desmin antibody detects DES protein by Western blot analysis.

A. 50 µg mouse muscle lysate/extract

10 % SDS-PAGE

Desmin antibody (GTx103557) dilution: 1:10000



GTx103557 WB Image

Desmin antibody detects DES protein by Western blot analysis.

A. 30 µg A549 whole cell lysate/extract | B. 30 µg HCT116 whole cell lysate/extract

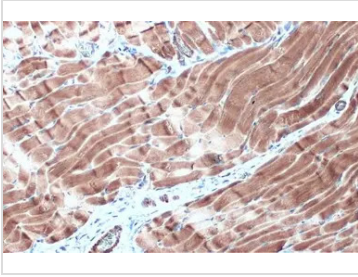
B. 30 µg HCT116 whole cell lysate/extract

10 % SDS-PAGE

Desmin antibody (GTx103557) dilution: 1:3000



For full product information, images and publications, please visit our [website](https://www.genetex.com).



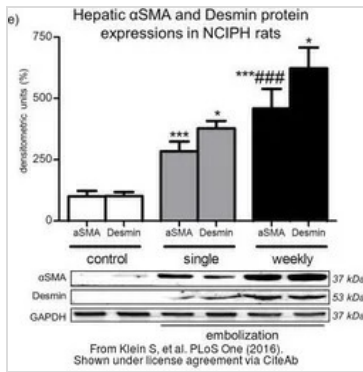
GTX103557 IHC-P Image

Desmin antibody detects Desmin protein at cytoplasm by immunohistochemical analysis.

Sample: Paraffin-embedded rat muscle.

Desmin stained by Desmin antibody (GTX103557) diluted at 1:500.

Antigen Retrieval: Citrate buffer, pH 6.0, 15 min



GTX103557 WB Image

The data was published in the journal PLoS One in 2016. [PMID: 27589391](https://doi.org/10.1371/journal.pone.0275893)



For full product information, images and publications, please visit our [website](https://www.genetex.com).

Keratin 36 antibody

Cat. No. GTX120881

Host	Rabbit
Clonality	Polyclonal
Isotype	IgG
Application	WB, ICC/IF, IHC-P
Reactivity	Human

Package

100 µl, 25 µl

APPLICATION

Application Note

*Optimal dilutions/concentrations should be determined by the researcher.

Suggested dilution	Recommended dilution
WB	1:500-1:3000
ICC/IF	1:100-1:1000
IHC-P	1:100-1:1000

Not tested in other applications.

Calculated MW 52 kDa. ([Note](#))

PROPERTIES

Form	Liquid
Buffer	0.1M Tris, 0.1M Glycine, 20% Glycerol
Preservative	0.01% Thimerosal
Storage	Store as concentrated solution. Centrifuge briefly prior to opening vial. For short-term storage (1-2 weeks), store at 4°C. For long-term storage, aliquot and store at -20°C or below. Avoid multiple freeze-thaw cycles.
Concentration	1 mg/ml (Please refer to the vial label for the specific concentration.)
Immunogen	Recombinant protein encompassing a sequence within the center region of human Keratin 36. The exact sequence is proprietary.
Purification	Purified by antigen-affinity chromatography.
Conjugation	Unconjugated

Note

For laboratory research use only. Not for any clinical, therapeutic, or diagnostic use in humans or animals. Not for animal or human consumption.

Purchasers shall not, and agree not to enable third parties to, analyze, copy, reverse engineer or otherwise attempt to determine the structure or sequence of the product.



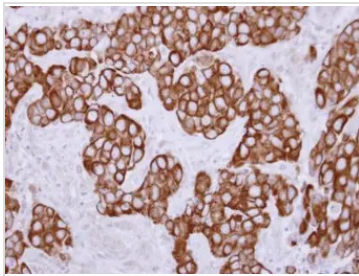
For full product information, images and publications, please visit our [website](#).

DATA IMAGES



GTx120881 ICC/IF Image

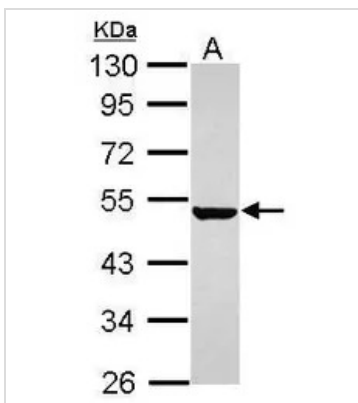
Immunofluorescence analysis of methanol-fixed HeLa, using Keratin 36 (GTx120881) antibody at 1:200 dilution.



GTx120881 IHC-P Image

Immunohistochemical analysis of paraffin-embedded Breast ca, using Keratin 36(GTx120881) antibody at 1:250 dilution.

Antigen Retrieval: Trilogy™ (EDTA based, pH 8.0) buffer, 15min



GTx120881 WB Image

Sample (30 ug of whole cell lysate)

A: HeLa

10% SDS PAGE

GTx120881 diluted at 1:1000



For full product information, images and publications, please visit our [website](https://www.genetex.com).

Goat Anti-Rabbit IgG antibody (HRP)

Cat. No. GTX213110-01

Host	Goat
Clonality	Polyclonal
Isotype	IgG
Application	WB, IHC-P, ELISA
Reactivity	Rabbit

Reference (501)
Package
1 ml

APPLICATION

Application Note

*Optimal dilutions/concentrations should be determined by the researcher.

Suggested dilution	Recommended dilution
WB	Assay dependent
IHC-P	1:100-1:1000
ELISA	Assay dependent

Not tested in other applications.

PROPERTIES

Form	Liquid
Buffer	0.05M Tris, 0.15M NaCl, 1%BSA
Preservative	0.025% ProClin 300
Storage	Store as concentrated solution. Centrifuge briefly prior to opening vial. For short-term storage (1-2 weeks), store at 4°C. For long-term storage, aliquot and store at -20°C or below. Avoid multiple freeze-thaw cycles.
Concentration	0.5 mg/ml (Please refer to the vial label for the specific concentration.)
Immunogen	Highly purified whole rabbit IgG
Purification	Purified by antigen-affinity chromatography.
Conjugation	Horseradish peroxidase(HRP)

Note

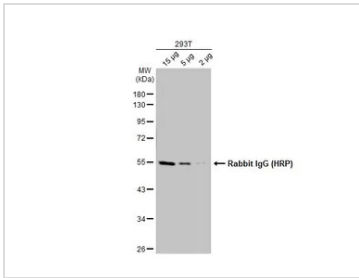
For laboratory research use only. Not for any clinical, therapeutic, or diagnostic use in humans or animals. Not for animal or human consumption.

Purchasers shall not, and agree not to enable third parties to, analyze, copy, reverse engineer or otherwise attempt to determine the structure or sequence of the product.



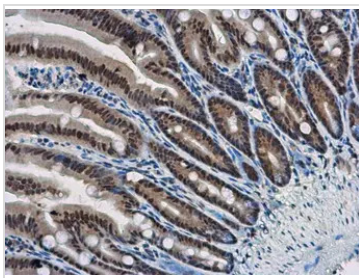
For full product information, images and publications, please visit our [website](#).

DATA IMAGES



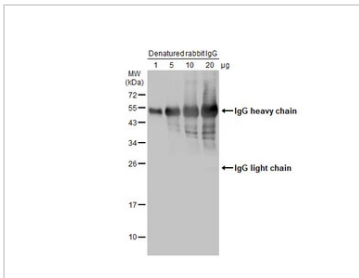
GTX213110-01 WB Image

Various whole cell extracts were separated by 10% SDS-PAGE, and the membrane was blotted with Rabbit IgG antibody (HRP) (GTX213110-01) diluted at 1:10000.



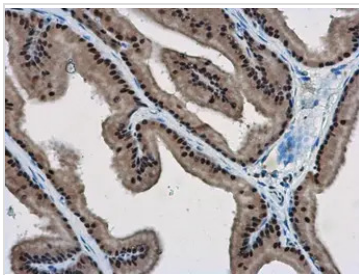
GTX213110-01 IHC-P Image

WBP11 antibody detects WBP11 protein at nucleus in mouse intestine by immunohistochemical analysis.
Sample: Paraffin-embedded mouse intestine.
WBP11 antibody (GTX118654) diluted at 1:500.
The signal was developed by Rabbit IgG antibody (HRP) (GTX213110-01)
Antigen Retrieval: Citrate buffer, pH 6.0, 15 min



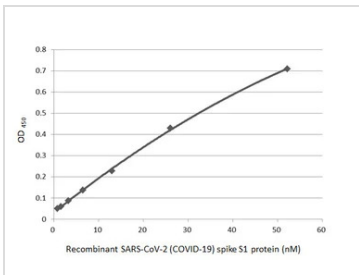
GTX213110-01 WB Image

Various amounts of denatured rabbit IgG protein were separated by 12% SDS-PAGE, and the membrane was blotted with HRP-conjugated anti-rabbit IgG antibody (GTX213110-01) diluted at 1:5000.



GTX213110-01 IHC-P Image

WBP11 antibody detects WBP11 protein at nucleus in rat prostate by immunohistochemical analysis.
Sample: Paraffin-embedded rat prostate.
WBP11 antibody (GTX118654) diluted at 1:500.
The signal was developed by Rabbit IgG antibody (HRP) (GTX213110-01).
Antigen Retrieval: Citrate buffer, pH 6.0, 15 min

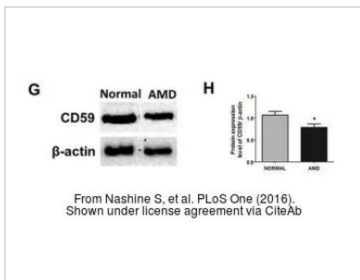


GTX213110-01 ELISA Image

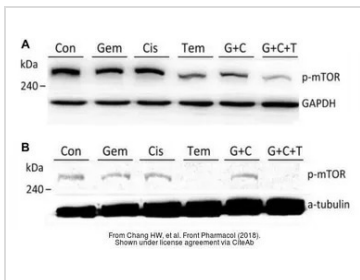
Indirect ELISA analysis performed by coating plate with recombinant SARS-CoV-2 (COVID-19) Spike S1 protein, His tag (active) (GTX135817-pro) (52.15-0.81 nM). Coated protein was probed with SARS-CoV-2 (COVID-19) Spike S1 antibody [HL134] (GTX635671) (1 µg/mL). Goat anti-rabbit IgG antibody (HRP) (GTX213110-01) (1:10000) was used to detect bound primary antibody.



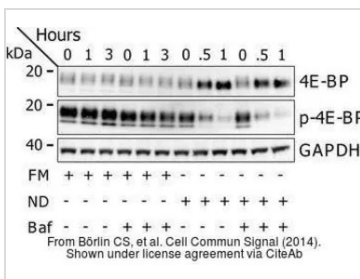
For full product information, images and publications, please visit our [website](https://www.genetex.com).


GTx213110-01 WB Image

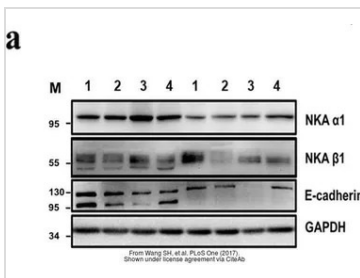
The data was published in the 2016 in PLoS One. [PMID: 27486856](https://pubmed.ncbi.nlm.nih.gov/27486856/)


GTx213110-01 WB Image

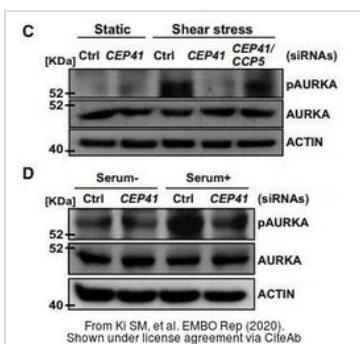
The data was published in the journal Front Pharmacol in 2018. [PMID: 30087612](https://pubmed.ncbi.nlm.nih.gov/30087612/)


GTx213110-01 WB Image

The data was published in the journal Cell Commun Signal in 2014. [PMID: 25214434](https://pubmed.ncbi.nlm.nih.gov/25214434/)


GTx213110-01 WB Image

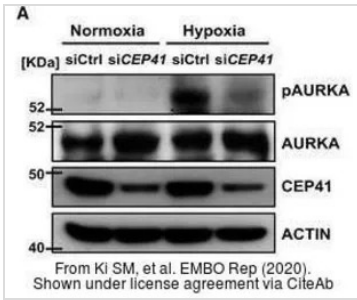
The data was published in the journal PLoS One in 2017. [PMID: 28832634](https://pubmed.ncbi.nlm.nih.gov/28832634/)


GTx213110-01 WB Image

The data was published in the journal EMBO Rep in 2020. [PMID: 31885126](https://pubmed.ncbi.nlm.nih.gov/31885126/)

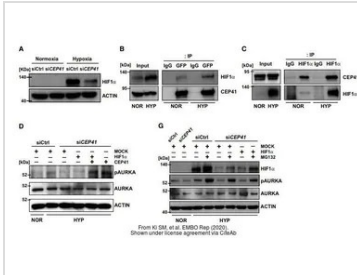


For full product information, images and publications, please visit our [website](https://www.genetex.com).



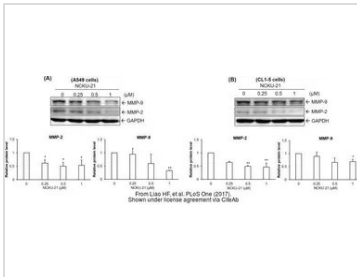
GTx213110-01 WB Image

The data was published in the journal EMBO Rep in 2020. [PMID: 31885126](#)



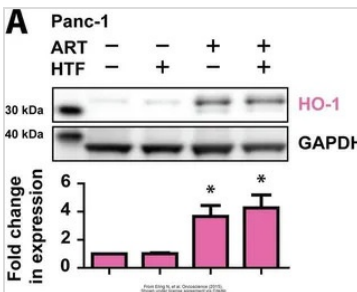
GTx213110-01 WB Image

The data was published in the journal EMBO Rep in 2020. [PMID: 31885126](#)



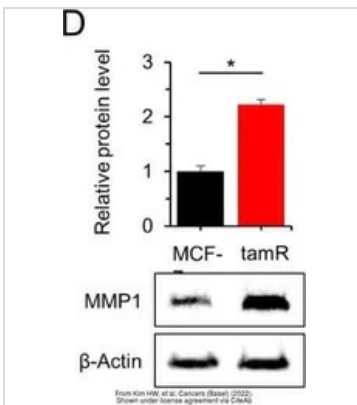
GTx213110-01 WB Image

The data was published in the journal PLoS One in 2017. [PMID: 28945763](#)



GTx213110-01 WB Image

The data was published in the journal Oncoscience in 2015. [PMID: 26097885](#)

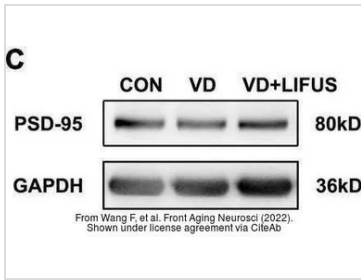


GTx213110-01 WB Image

The data was published in the 2022 in Cancers (Basel). [PMID: 35267540](#)

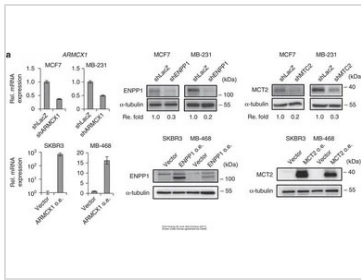


For full product information, images and publications, please visit our [website](#).



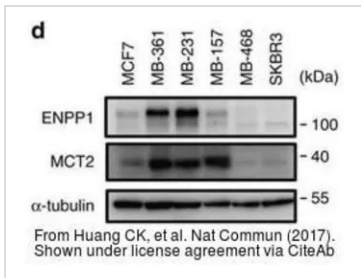
GTx213110-01 WB Image

The data was published in the 2022 in Front Aging Neurosci. [PMID: 35264943](#)



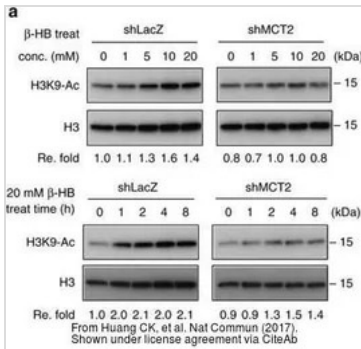
GTx213110-01 WB Image

The data was published in the 2017 in Nat Commun. [PMID: 28281525](#)



GTx213110-01 WB Image

The data was published in the 2017 in Nat Commun. [PMID: 28281525](#)



GTx213110-01 WB Image

The data was published in the 2017 in Nat Commun. [PMID: 28281525](#)



For full product information, images and publications, please visit our [website](#).