

GTX300081

Neuronal and Glial Markers Antibody Panel

Product Content

Cat No	Product Name	Reactivity	Application	Package
GTX100042	Iba1 antibody	Human, Mouse, Rat	WB, ICC/IF, IHC-P, IHC-Fr, FACS, IHC, IHC (Free Floating)	25 µl
GTX108711	GFAP antibody	Human, Mouse, Rat	WB, ICC/IF, IHC-P, IHC-Fr, IHC	25 µl
GTX109637	PGP9.5 antibody	Human, Mouse, Rat	WB, ICC/IF, IHC-P, IHC-Fr	25 µl
GTX127937	GAP43 antibody	Human, Mouse, Rat	WB, ICC/IF, IHC-P, IHC-Fr	25 µl
GTX213110-01	Goat Anti-Rabbit IgG antibody (HRP)	Rabbit	WB, IHC-P, ELISA	25 µl

Note

For In vitro laboratory use only. Not for any clinical, therapeutic, or diagnostic use in humans or animals. Not for animal or human consumption.



For full product information, images and publications, please visit our [website](#).

Iba1 antibody

Cat. No. GTX100042

Host	Rabbit
Clonality	Polyclonal
Isotype	IgG
Application	WB, ICC/IF, IHC-P, IHC-Fr, FACS, IHC, IHC (Free Floating)
Reactivity	Human, Mouse, Rat

Reference (99)

★★★★★ Review (5)

Package

100 µl, 25 µl

APPLICATION

Application Note

*Optimal dilutions/concentrations should be determined by the researcher.

Suggested dilution	Recommended dilution
WB	1:500-1:10000
ICC/IF	1:100-1:1000
IHC-P	1:100-1:1000
IHC-Fr	1:100-1:1000
FACS	1:50-1:200
IHC	Assay dependent
IHC (Free Floating)	Assay dependent

Not tested in other applications.

Calculated MW 17 kDa. ([Note](#))

PROPERTIES

Form	Liquid
Buffer	PBS
Preservative	No preservative
Storage	Store as concentrated solution. Centrifuge briefly prior to opening vial. For short-term storage (1-2 weeks), store at 4°C. For long-term storage, aliquot and store at -20°C or below. Avoid multiple freeze-thaw cycles.
Concentration	1 mg/ml (Please refer to the vial label for the specific concentration.)
Immunogen	Carrier-protein conjugated synthetic peptide encompassing a sequence within the C-terminus region of human Iba1. The exact sequence is proprietary.
Purification	Purified by antigen-affinity chromatography.
Conjugation	Unconjugated



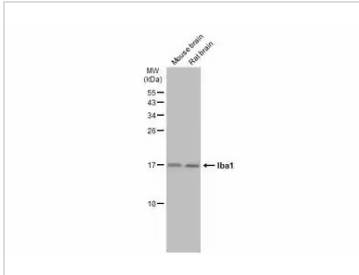
For full product information, images and publications, please visit our [website](#).

Date 2024 / 04 / 27 Page 2 of 29

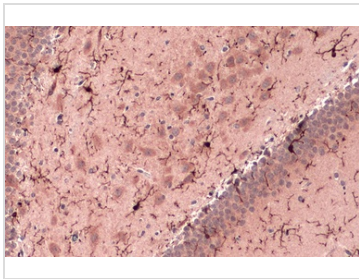
For laboratory research use only. Not for any clinical, therapeutic, or diagnostic use in humans or animals. Not for animal or human consumption.

Note

Purchasers shall not, and agree not to enable third parties to, analyze, copy, reverse engineer or otherwise attempt to determine the structure or sequence of the product.

DATA IMAGES

GTXT100042 WB Image

Various tissue extracts (50 µg) were separated by 15% SDS-PAGE, and the membrane was blotted with Iba1 antibody (GTXT100042) diluted at 1:1000. The HRP-conjugated anti-rabbit IgG antibody (GTXT213110-01) was used to detect the primary antibody.

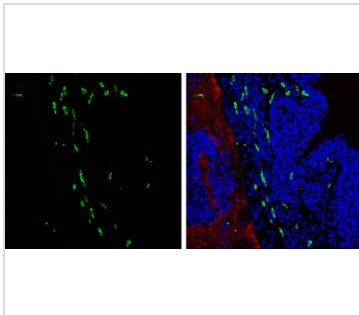

GTXT100042 IHC-P Image

Iba1 antibody detects Iba1 protein at cell membrane and cytoplasm by immunohistochemical analysis.

Sample: Paraffin-embedded rat brain.

Iba1 stained by Iba1 antibody (GTXT100042) diluted at 1:500.

Antigen Retrieval: Citrate buffer, pH 6.0, 15 min


GTXT100042 IHC-Fr Image

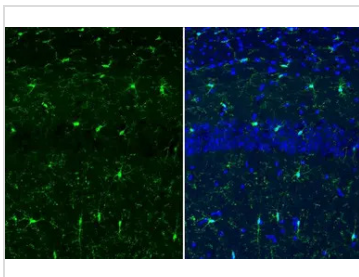
Iba1 antibody detects Iba1 protein expression at microglia by immunohistochemical analysis.

Sample: Frozen sectioned E13.5 Rat brain.

Green: Iba1 protein stained by Iba1 antibody (GTXT100042) diluted at 1:250.

Red: beta Tubulin 3/ TUJ1, a mature neuron marker, stained by beta Tubulin 3/ TUJ1 antibody [GT11710] (GTXT631836) diluted at 1:500.

Blue: Fluoroshield with DAPI (GTXT30920).


GTXT100042 IHC-Fr Image

Iba1 antibody detects Iba1 protein at cell membrane and cytoplasm by immunohistochemical analysis.

Sample: Frozen-sectioned mouse brain.

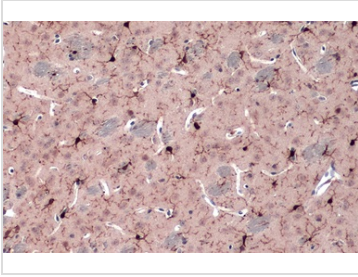
Green: Iba1 stained by Iba1 antibody (GTXT100042) diluted at 1:500.

Blue: Fluoroshield with DAPI (GTXT30920).

Antigen Retrieval: ice-cold MeOH for 5 min



For full product information, images and publications, please visit our [website](https://www.genetex.com).

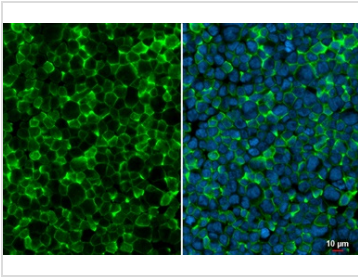

GTK100042 IHC-P Image

Iba1 antibody detects Iba1 protein at cell membrane and cytoplasm by immunohistochemical analysis.

Sample: Paraffin-embedded mouse brain.

Iba1 stained by Iba1 antibody (GTK100042) diluted at 1:500.

Antigen Retrieval: Citrate buffer, pH 6.0, 15 min

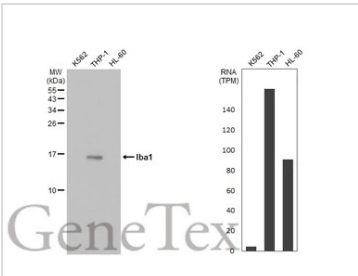

GTK100042 ICC/IF Image

Iba1 antibody detects Iba1 protein at cell membrane by immunofluorescent analysis.

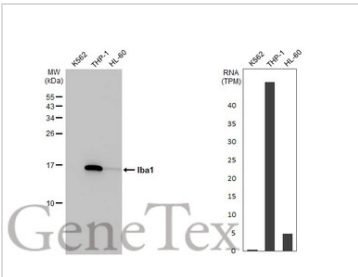
Sample: THP-1 cells were fixed in 4% paraformaldehyde at RT for 15 min.

Green: Iba1 stained by Iba1 antibody (GTK100042) diluted at 1:500.

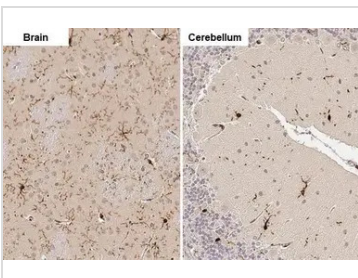
Blue: Fluoroshield with DAPI (GTK30920).


GTK100042 WB Image

Various whole cell extracts (30 µg) were separated by 15% SDS-PAGE, and the membrane was blotted with Iba1 antibody (GTK100042) diluted at 1:1000. The HRP-conjugated anti-rabbit IgG antibody (GTK213110-01) was used to detect the primary antibody. Corresponding RNA expression data for the same cell lines are based on Human Protein Atlas program.


GTK100042 WB Image

Various whole cell extracts (30 µg) were separated by 15% SDS-PAGE, and the membrane was blotted with Iba1 antibody [HL22] (GTK635363) diluted at 1:1000. The HRP-conjugated anti-rabbit IgG antibody (GTK213110-01) was used to detect the primary antibody. Corresponding RNA expression data for the same cell lines are based on Human Protein Atlas program.


GTK100042 IHC-P Image

Iba1 antibody detects Iba1 protein by immunohistochemical analysis.

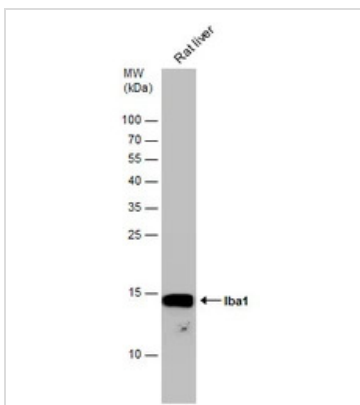
Sample: Paraffin-embedded rat tissues.

Iba1 stained by Iba1 antibody (GTK100042) diluted at 1:100.

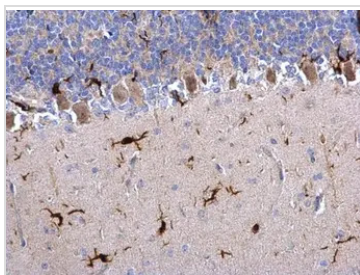
Antigen Retrieval: Citrate buffer, pH 6.0, 15 min



For full product information, images and publications, please visit our [website](https://www.genetex.com).


GTX100042 WB Image

Rat tissue extract (50 µg) was separated by 15% SDS-PAGE, and the membrane was blotted with Iba1 antibody (GTX100042) diluted at 1:1000.

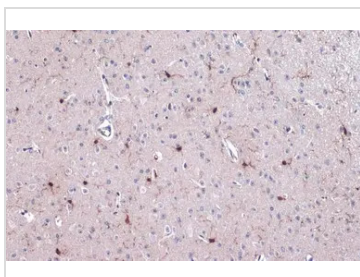

GTX100042 IHC-P Image

Iba1 antibody detects Iba1 protein on rat hind brain by immunohistochemical analysis.

Sample: Paraffin-embedded rat hind brain.

Iba1 antibody (GTX100042) dilution: 1:500.

Antigen Retrieval: Trilogy™ (EDTA based, pH 8.0) buffer, 15min

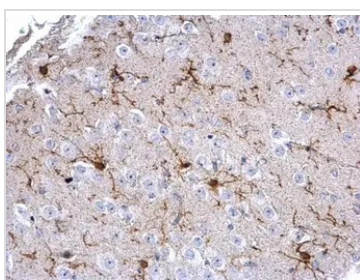

GTX100042 IHC-P Image

Iba1 antibody detects Iba1 protein at cell membrane and cytoplasm by immunohistochemical analysis.

Sample: Paraffin-embedded mouse cerebellum.

Iba1 stained by Iba1 antibody (GTX100042) diluted at 1:500.

Antigen Retrieval: Citrate buffer, pH 6.0, 15 min


GTX100042 IHC-P Image

Iba1 antibody detects Iba1 protein on mouse fore brain by immunohistochemical analysis.

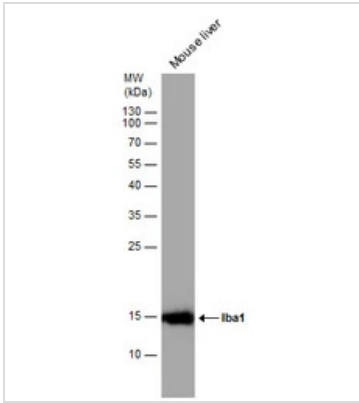
Sample: Paraffin-embedded mouse fore brain.

Iba1 antibody (GTX100042) dilution: 1:500.

Antigen Retrieval: Trilogy™ (EDTA based, pH 8.0) buffer, 15min

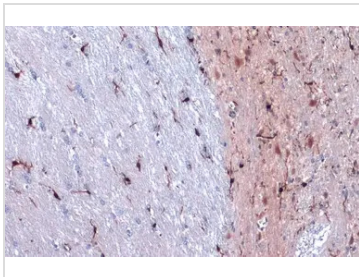


For full product information, images and publications, please visit our [website](https://www.genetex.com).



GTx100042 WB Image

Mouse tissue extract (50 µg) was separated by 15% SDS-PAGE, and the membrane was blotted with Iba1 antibody (GTx100042) diluted at 1:1000.



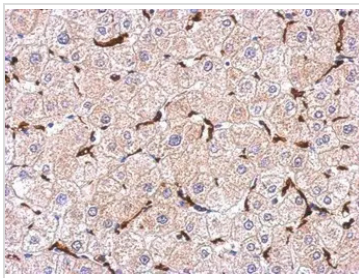
GTx100042 IHC-P Image

Iba1 antibody detects Iba1 protein at cell membrane and cytoplasm by immunohistochemical analysis.

Sample: Paraffin-embedded rat cerebellum.

Iba1 stained by Iba1 antibody (GTx100042) diluted at 1:500.

Antigen Retrieval: Citrate buffer, pH 6.0, 15 min

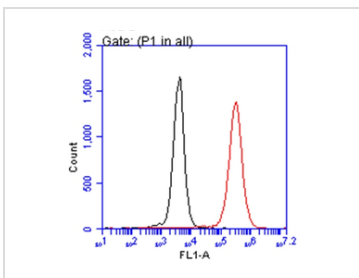


GTx100042 IHC-P Image

Immunohistochemical analysis of paraffin-embedded human hepatoma, using Iba1(GTx100042) antibody at 1:500 dilution.

Antigen Retrieval: Trilogy™ (EDTA based, pH 8.0) buffer, 15min

Iba1 antibody detects Iba1 in the cytosol of Kupffer cell in human hepatoma by immunohistochemical analysis.



GTx100042 FACS Image

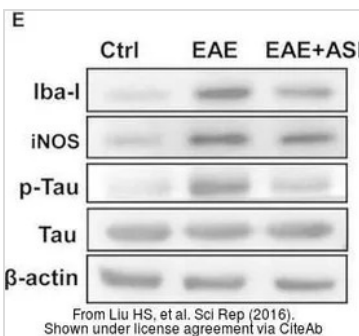
Iba1 antibody (GTx100042) detects AIF1 protein by flow cytometry analysis.

Sample: THP-1 cell.

Black: Unlabelled sample was used as a control.

Red: Iba1 antibody (GTx100042) dilution: 1:50.

Acquisition of 20,000 events were collected for FACS analysis.

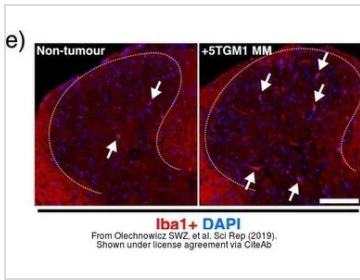


GTx100042 WB Image

The data was published in the journal Sci Rep in 2016. [PMID: 26750705](https://pubmed.ncbi.nlm.nih.gov/26750705/)

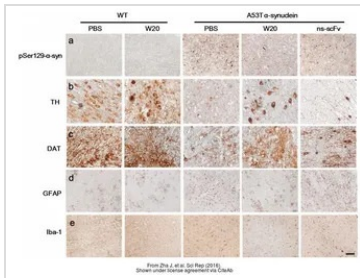


For full product information, images and publications, please visit our [website](https://www.genetex.com).



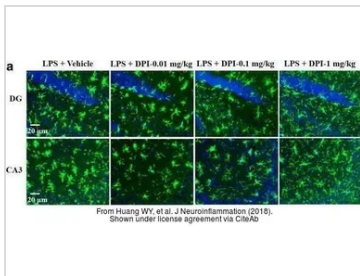
GTx100042 IHC-P Image

The data was published in the journal Sci Rep in 2019. [PMID: 31578352](https://pubmed.ncbi.nlm.nih.gov/31578352/)



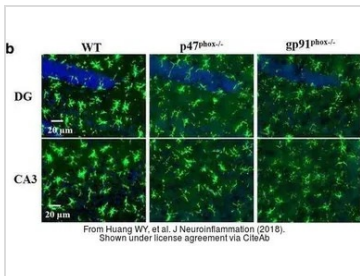
GTx100042 IHC Image

The data was published in the journal Sci Rep in 2016. [PMID: 27824125](https://pubmed.ncbi.nlm.nih.gov/27824125/)



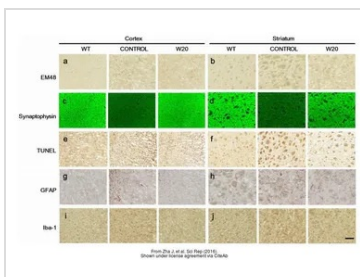
GTx100042 IHC-Fr Image

The data was published in the journal J Neuroinflammation in 2018. [PMID: 29753328](https://pubmed.ncbi.nlm.nih.gov/29753328/)



GTx100042 IHC-Fr Image

The data was published in the journal J Neuroinflammation in 2018. [PMID: 29753328](https://pubmed.ncbi.nlm.nih.gov/29753328/)

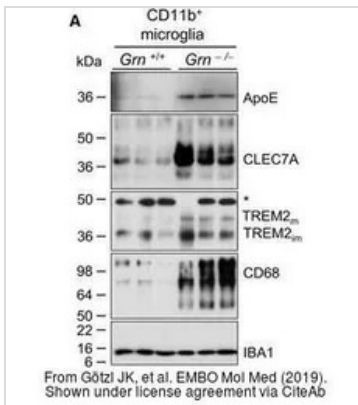


GTx100042 IHC Image

The data was published in the journal Sci Rep in 2016. [PMID: 27824125](https://pubmed.ncbi.nlm.nih.gov/27824125/)

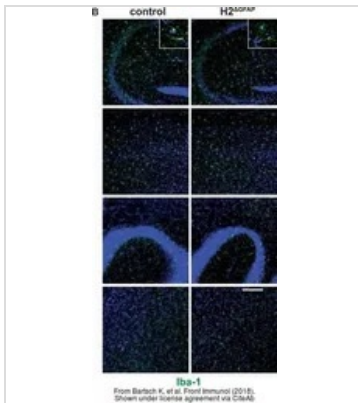


For full product information, images and publications, please visit our [website](https://www.genetex.com).



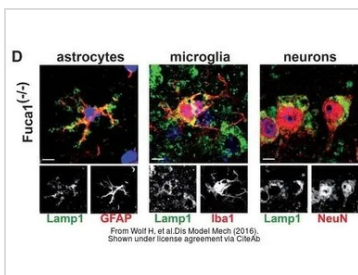
GTx100042 WB Image

The data was published in the journal EMBO Mol Med in 2019. [PMID: 31122931](https://pubmed.ncbi.nlm.nih.gov/31122931/)



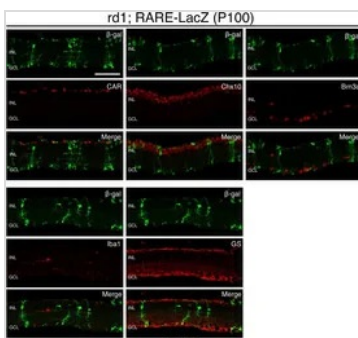
GTx100042 IHC (Free Floating) Image

The data was published in the journal Front Immunol in 2018. [PMID: 29662492](https://pubmed.ncbi.nlm.nih.gov/29662492/)



GTx100042 ICC/IF Image

The data was published in the journal Dis Model Mech in 2016. [PMID: 27491075](https://pubmed.ncbi.nlm.nih.gov/27491075/)



GTx100042 IHC-Fr Image

The data was published in the 2022 in Elife. [PMID: 35315776](https://pubmed.ncbi.nlm.nih.gov/35315776/)



For full product information, images and publications, please visit our [website](https://www.genetex.com).

GFAP antibody

Cat. No. GTX108711

Host	Rabbit
Clonality	Polyclonal
Isotype	IgG
Application	WB, ICC/IF, IHC-P, IHC-Fr, IHC
Reactivity	Human, Mouse, Rat

Reference (55)

★★★★★ Review (1)

Package

100 µl, 25 µl

APPLICATION

Application Note

*Optimal dilutions/concentrations should be determined by the researcher.

Suggested dilution	Recommended dilution
WB	1:5000-1:50000
ICC/IF	1:100-1:1000
IHC-P	1:100-1:1000
IHC-Fr	1:100-1:1000
IHC	Assay dependent

Not tested in other applications.

Calculated MW 50 kDa. ([Note](#))

PROPERTIES

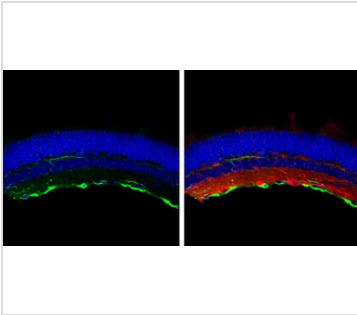
Form	Liquid
Buffer	PBS, 1% BSA, 20% Glycerol
Preservative	0.025% ProClin 300
Storage	Store as concentrated solution. Centrifuge briefly prior to opening vial. For short-term storage (1-2 weeks), store at 4°C. For long-term storage, aliquot and store at -20°C or below. Avoid multiple freeze-thaw cycles.
Concentration	0.47 mg/ml (Please refer to the vial label for the specific concentration.)
Immunogen	Recombinant protein encompassing a sequence within the center region of human GFAP. The exact sequence is proprietary.
Purification	Purified by antigen-affinity chromatography.
Conjugation	Unconjugated

For full product information, images and publications, please visit our [website](#).

For laboratory research use only. Not for any clinical, therapeutic, or diagnostic use in humans or animals. Not for animal or human consumption.

Note

Purchasers shall not, and agree not to enable third parties to, analyze, copy, reverse engineer or otherwise attempt to determine the structure or sequence of the product.

DATA IMAGES

GTX108711 IHC-Fr Image

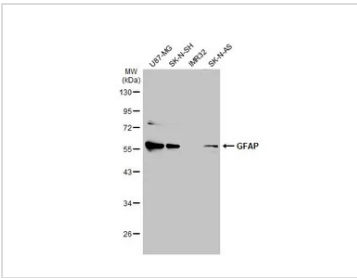
GFAP antibody detects GFAP protein at retinal ganglion cell layer by immunohistochemical analysis.

Sample: Frozen sectioned adult mouse retina.

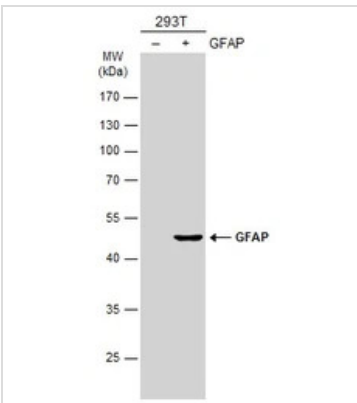
Green: GFAP protein stained by GFAP antibody (GTX108711) diluted at 1:250.

Red: beta Tubulin 3/ TUJ1, stained by beta Tubulin 3/ TUJ1 antibody [GT11710] (GTX631836) diluted at 1:250.

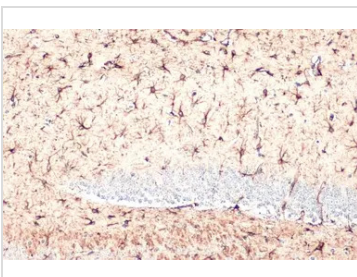
Blue: Fluoroshield with DAPI (GTX30920).


GTX108711 WB Image

Various whole cell extracts (30 µg) were separated by 10% SDS-PAGE, and the membrane was blotted with GFAP antibody (GTX108711) diluted at 1:2500. The HRP-conjugated anti-rabbit IgG antibody (GTX213110-01) was used to detect the primary antibody.


GTX108711 WB Image

Non-transfected (-) and transfected (+) 293T whole cell extracts (30 µg) were separated by 10% SDS-PAGE, and the membrane was blotted with GFAP antibody (GTX108711) diluted at 1:20000. The HRP-conjugated anti-rabbit IgG antibody (GTX213110-01) was used to detect the primary antibody.


GTX108711 IHC-P Image

GFAP antibody detects GFAP protein at cytoplasm by immunohistochemical analysis.

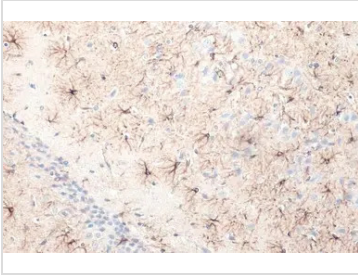
Sample: Paraffin-embedded mouse brain.

GFAP stained by GFAP antibody (GTX108711) diluted at 1:500.

Antigen Retrieval: Citrate buffer, pH 6.0, 15 min



For full product information, images and publications, please visit our [website](https://www.genetex.com).

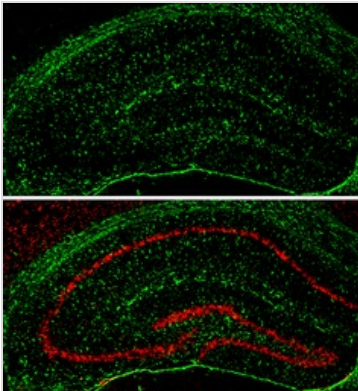

GTx108711 IHC-P Image

GFAP antibody detects GFAP protein at cytoplasm by immunohistochemical analysis.

Sample: Paraffin-embedded rat brain.

GFAP stained by GFAP antibody (GTx108711) diluted at 1:500.

Antigen Retrieval: Citrate buffer, pH 6.0, 15 min

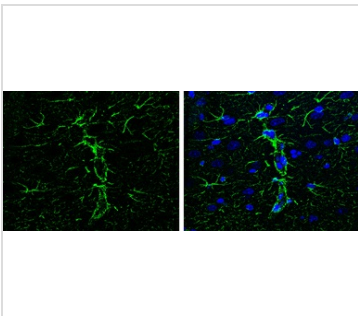

GTx108711 IHC-Fr Image

GFAP antibody detects GFAP protein expression by immunohistochemical analysis.

Sample: Frozen-sectioned adult mouse hippocampus.

Green: GFAP protein stained by GFAP antibody (GTx108711) diluted at 1:250.

Red: NeuN, stained by NeuN antibody [2Q158] (GTx30773) diluted at 1:500.


GTx108711 IHC-P Image

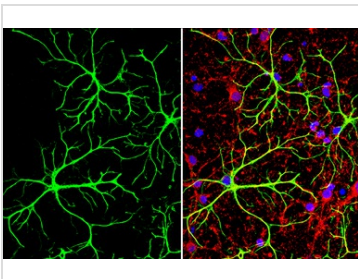
GFAP antibody detects GFAP protein at cytoplasm in rat brain by immunohistochemical analysis.

Sample: Paraffin-embedded rat brain.

Green: GFAP antibody (GTx108711) diluted at 1:200. The signal was developed using goat anti-rabbit IgG antibody (Dylight488) (GTx213110-04).

Blue: Nuclear staining with Hoechst 33342.

Antigen Retrieval: Citrate buffer, pH 6.0, 15 min


GTx108711 ICC/IF Image

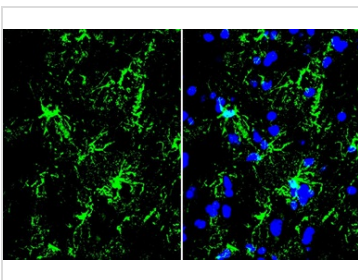
GFAP antibody detects GFAP protein at glia cells by immunofluorescent analysis.

Sample: DIV10 rat E18 primary cortical neuron and glia cells were fixed in 4% paraformaldehyde at RT for 15 min.

Green: GFAP stained by GFAP antibody (GTx108711) diluted at 1:500.

Red: Tau, stained by Tau antibody [GT287] (GTx634809) diluted at 1:500.

Blue: Fluoroshield with DAPI (GTx30920).


GTx108711 IHC-Fr Image

GFAP antibody detects GFAP protein by immunohistochemical analysis.

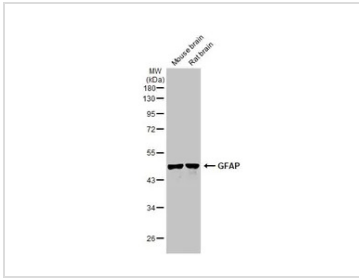
Sample: Frozen-sectioned mouse spinal cord.

Green: GFAP stained by GFAP antibody (GTx108711) diluted at 1:300.

Blue: Hoechst 33342 staining.

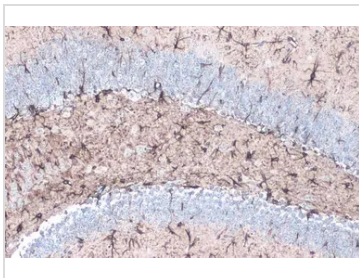


For full product information, images and publications, please visit our [website](https://www.genetex.com).



GTX108711 WB Image

Various tissue extracts (50 µg) were separated by 10% SDS-PAGE, and the membrane was blotted with GFAP antibody (GTX108711) diluted at 1:25000. The HRP-conjugated anti-rabbit IgG antibody (GTX213110-01) was used to detect the primary antibody.



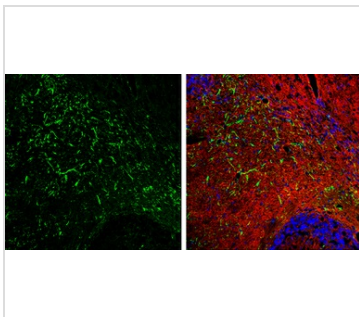
GTX108711 IHC-P Image

GFAP antibody detects GFAP protein at cytoplasm by immunohistochemical analysis.

Sample: Paraffin-embedded mouse hippocampus.

GFAP stained by GFAP antibody (GTX108711) diluted at 1:1000.

Antigen Retrieval: Citrate buffer, pH 6.0, 15 min



GTX108711 IHC-Fr Image

GFAP antibody detects GFAP protein expression by immunohistochemical analysis.

Sample: Frozen-sectioned adult mouse cerebellum.

Green: GFAP protein stained by GFAP antibody (GTX108711) diluted at 1:250.

Red: beta Tubulin 3/ TUJ1, stained by beta Tubulin 3/ TUJ1 antibody [GT11710] (GTX631836) diluted at 1:500.

Blue: Fluoroshield with DAPI (GTX30920).



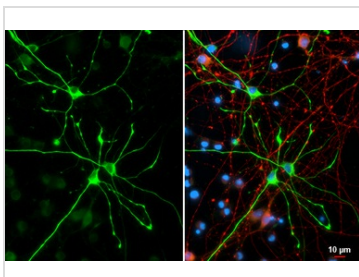
GTX108711 IHC-P Image

GFAP antibody detects GFAP protein at cytoplasm by immunohistochemical analysis.

Sample: Paraffin-embedded rat brain.

GFAP stained by GFAP antibody (GTX108711) diluted at 1:200.

Antigen Retrieval: Citrate buffer, pH 6.0, 15 min



GTX108711 ICC/IF Image

GFAP antibody detects GFAP protein at glia cells by immunofluorescent analysis.

Sample: DIV10 rat E18 primary hippocampal neuron and glia cells were fixed in 4% paraformaldehyde at RT for 15 min.

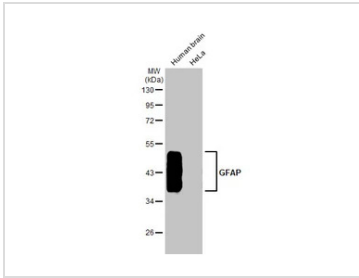
Green: GFAP stained by GFAP antibody (GTX108711) diluted at 1:250.

Red: Tau, a cytoskeleton marker, stained by Tau antibody [GT287] (GTX634809) diluted at 1:500.

Blue: Fluoroshield with DAPI (GTX30920).

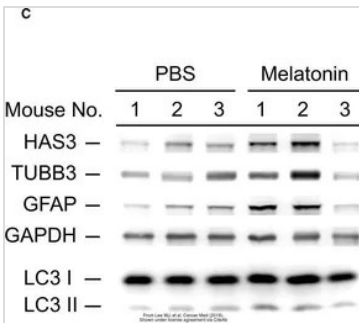


For full product information, images and publications, please visit our [website](https://www.genetex.com).



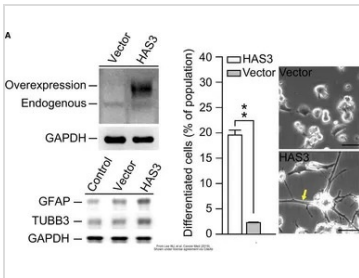
GTX108711 WB Image

Various whole cell and tissue extracts were separated by 10% SDS-PAGE, and the membrane was blotted with GFAP antibody (GTX108711) diluted at 1:1000. The HRP-conjugated anti-rabbit IgG antibody (GTX213110-01) was used to detect the primary antibody.



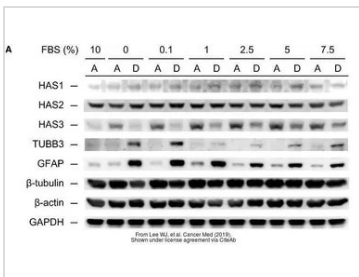
GTX108711 WB Image

The data was published in the journal Cancer Med in 2019. [PMID: 31274246](https://pubmed.ncbi.nlm.nih.gov/31274246/)



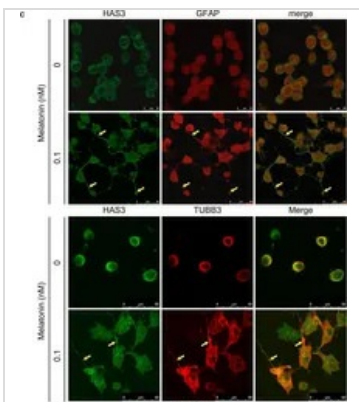
GTX108711 WB Image

The data was published in the journal Cancer Med in 2019. [PMID: 31274246](https://pubmed.ncbi.nlm.nih.gov/31274246/)



GTX108711 WB Image

The data was published in the journal Cancer Med in 2019. [PMID: 31274246](https://pubmed.ncbi.nlm.nih.gov/31274246/)

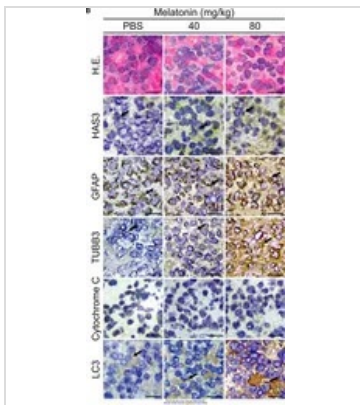


GTX108711 ICC/IF Image

The data was published in the journal Cancer Med in 2019. [PMID: 31274246](https://pubmed.ncbi.nlm.nih.gov/31274246/)

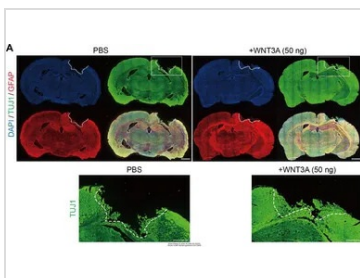


For full product information, images and publications, please visit our [website](https://www.genetex.com).



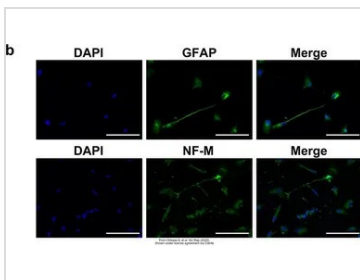
GTX108711 IHC-Fr Image

The data was published in the journal Cancer Med in 2019. [PMID: 31274246](#)



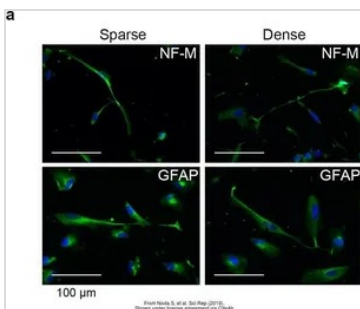
GTX108711 IHC-Fr Image

The data was published in the journal Int J Mol Sci in 2020. [PMID: 32098078](#)



GTX108711 ICC/IF Image

The data was published in the 2022 in Sci Rep. [PMID: 35027586](#)

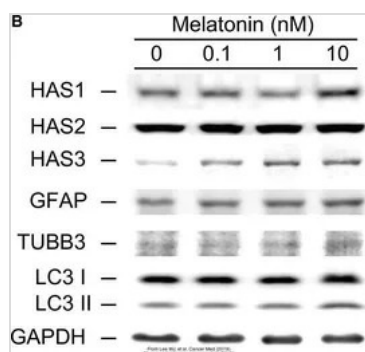


GTX108711 ICC/IF Image

The data was published in the 2019 in Sci Rep. [PMID: 30931957](#)



For full product information, images and publications, please visit our [website](#).


GTx108711 WB Image

The data was published in the journal Cancer Med in 2019. [PMID: 31274246](https://pubmed.ncbi.nlm.nih.gov/31274246/)



For full product information, images and publications, please visit our [website](https://www.genetex.com).

PGP9.5 antibody

Cat. No. GTX109637

Host	Rabbit
Clonality	Polyclonal
Isotype	IgG
Application	WB, ICC/IF, IHC-P, IHC-Fr
Reactivity	Human, Mouse, Rat

Reference (13)

★★★★★ Review (1)

Package

100 µl, 25 µl

APPLICATION

Application Note

*Optimal dilutions/concentrations should be determined by the researcher.

Suggested dilution	Recommended dilution
WB	1:1000-1:20000
ICC/IF	1:100-1:1000
IHC-P	1:100-1:1000
IHC-Fr	1:100-1:1000

Not tested in other applications.

Calculated MW 25 kDa. ([Note](#))

PROPERTIES

Form	Liquid
Buffer	PBS, 1% BSA, 20% Glycerol
Preservative	0.025% ProClin 300
Storage	Store as concentrated solution. Centrifuge briefly prior to opening vial. For short-term storage (1-2 weeks), store at 4°C. For long-term storage, aliquot and store at -20°C or below. Avoid multiple freeze-thaw cycles.
Concentration	0.26 mg/ml (Please refer to the vial label for the specific concentration.)
Immunogen	Carrier-protein conjugated synthetic peptide encompassing a sequence within the C-terminus region of human PGP9.5. The exact sequence is proprietary.
Purification	Purified by antigen-affinity chromatography.
Conjugation	Unconjugated

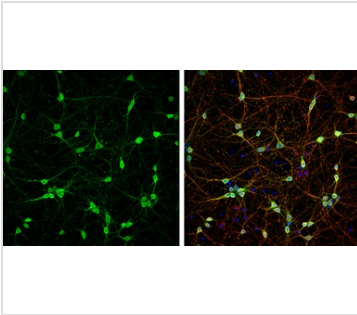


For full product information, images and publications, please visit our [website](#).

For laboratory research use only. Not for any clinical, therapeutic, or diagnostic use in humans or animals. Not for animal or human consumption.

Note

Purchasers shall not, and agree not to enable third parties to, analyze, copy, reverse engineer or otherwise attempt to determine the structure or sequence of the product.

DATA IMAGES

GTX109637 ICC/IF Image

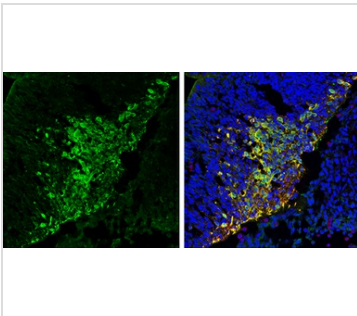
PGP9.5 antibody detects PGP9.5 protein at cytoplasm by immunofluorescent analysis.

Sample: DIV9 rat E18 primary cortical neurons were fixed in 4% paraformaldehyde at RT for 15 min.

Green: PGP9.5 protein stained by PGP9.5 antibody (GTX109637) diluted at 1:500.

Red: beta Tubulin 3/ Tuj1, stained by beta Tubulin 3/ Tuj1 antibody [GT11710] (GTX631836) diluted at 1:500.

Blue: Fluoroshield with DAPI (GTX30920).


GTX109637 IHC-Fr Image

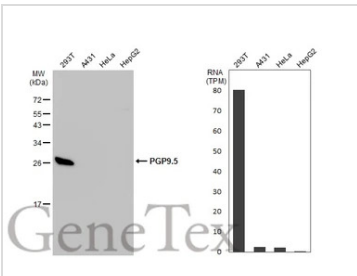
PGP9.5 antibody detects PGP9.5 protein expression by immunohistochemical analysis.

Sample: Frozen sectioned E13.5 Rat brain.

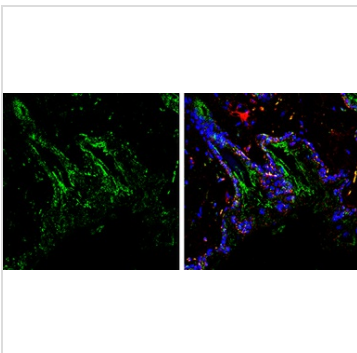
Green: PGP9.5 protein stained by PGP9.5 antibody (GTX109637) diluted at 1:250.

Red: beta Tubulin 3/ TUJ1, a mature neuron marker, stained by beta Tubulin 3/ TUJ1 antibody [GT11710] (GTX631836) diluted at 1:500.

Blue: Fluoroshield with DAPI (GTX30920).


GTX109637 WB Image

Various whole cell extracts (30 µg) were separated by 12% SDS-PAGE, and the membrane was blotted with PGP9.5 antibody (GTX109637) diluted at 1:1000. The HRP-conjugated anti-rabbit IgG antibody (GTX213110-01) was used to detect the primary antibody. Corresponding RNA expression data for the same cell lines are based on Human Protein Atlas program.


GTX109637 IHC-P Image

PGP9.5 antibody detects PGP9.5 protein by immunohistochemical analysis.

Samples: Paraffin-embedded mouse skin.

Green: PGP9.5 protein stained by PGP9.5 antibody (GTX109637) diluted at 1:250.

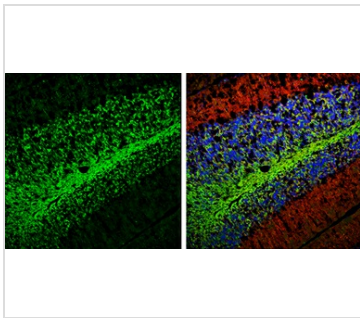
Red: beta Tubulin 3/ Tuj1, a marker, stained by beta Tubulin 3/ Tuj1 antibody [GT1338] (GTX631831) diluted at 1:500.

Blue: Fluoroshield with DAPI (GTX30920).

Antigen Retrieval: Citrate buffer, pH 6.0, 15 min



For full product information, images and publications, please visit our [website](https://www.genetex.com).


GTX109637 IHC-Fr Image

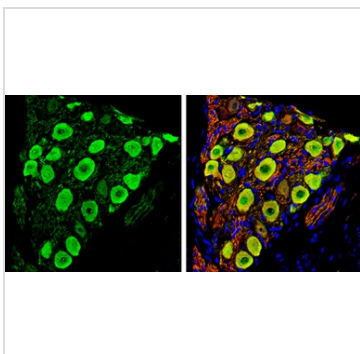
PGP9.5 antibody detects PGP9.5 protein expression by immunohistochemical analysis.

Sample: Frozen-sectioned adult mouse cerebellum.

Green: PGP9.5 protein stained by PGP9.5 antibody (GTX109637) diluted at 1:250.

Red: beta Tubulin 3/ TUJ1, stained by beta Tubulin 3/ TUJ1 antibody [GT11710] (GTX631836) diluted at 1:500.

Blue: Fluoroshield with DAPI (GTX30920).


GTX109637 IHC-P Image

PGP9.5 antibody detects PGP9.5 protein by immunohistochemical analysis.

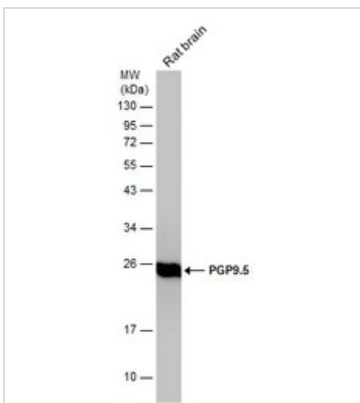
Samples: Paraffin-embedded rat colon.

Green: PGP9.5 protein stained by PGP9.5 antibody (GTX109637) diluted at 1:250.

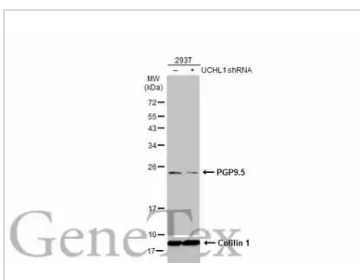
Red: beta Tubulin 3/ Tuj1, a marker, stained by beta Tubulin 3/ Tuj1 antibody [GT1338] (GTX631831) diluted at 1:500.

Blue: Fluoroshield with DAPI (GTX30920).

Antigen Retrieval: Citrate buffer, pH 6.0, 15 min


GTX109637 WB Image

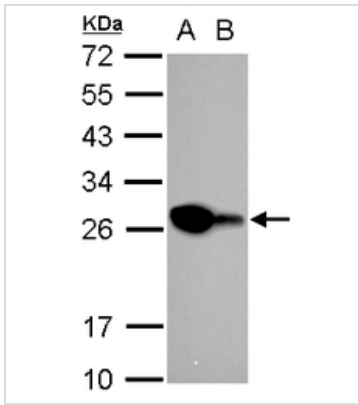
Rat tissue extract (50 μ g) was separated by 12% SDS-PAGE, and the membrane was blotted with PGP9.5 antibody (GTX109637) diluted at 1:10000.


GTX109637 WB Image

Non-transfected (–) and transfected (+) 293T whole cell extracts (30 μ g) were separated by 12% SDS-PAGE, and the membrane was blotted with PGP9.5 antibody (GTX109637) diluted at 1:3000. The HRP-conjugated anti-rabbit IgG antibody (GTX213110-01) was used to detect the primary antibody.



For full product information, images and publications, please visit our [website](https://www.genetex.com).



GTx109637 WB Image

PGP9.5 antibody detects PGP9.5 protein by western blot analysis.

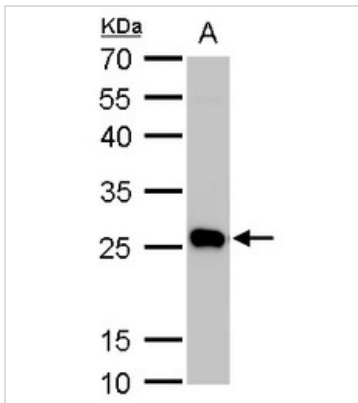
A. 30 µg Neuro2A whole cell lysate/extract

B. 30 µg GL261 whole cell lysate/extract

12% SDS-PAGE

PGP9.5 antibody (GTx109637) dilution: 1:10000

The HRP-conjugated anti-rabbit IgG antibody (GTx213110-01) was used to detect the primary antibody.



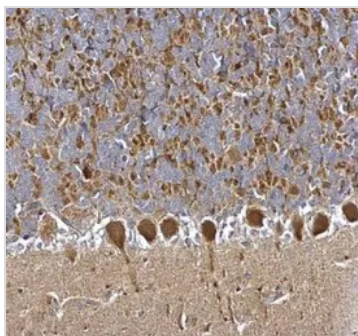
GTx109637 WB Image

PGP9.5 antibody detects PGP9.5 protein by Western blot analysis.

A. 50 µg mouse brain lysate/extract

12 % SDS-PAGE

PGP9.5 antibody (GTx109637) dilution: 1:5000



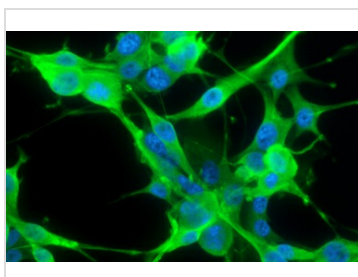
GTx109637 IHC-P Image

PGP9.5 antibody detects PGP9.5 protein at cytosol on rat hind brain by immunohistochemical analysis.

Sample: Paraffin-embedded rat hind brain.

PGP9.5 antibody (GTx109637) dilution: 1:500.

Antigen Retrieval: Trilogy™ (EDTA based, pH 8.0) buffer, 15min



GTx109637 ICC/IF Image

PGP9.5 antibody detects PGP9.5 protein at cytoplasm by immunofluorescent analysis.

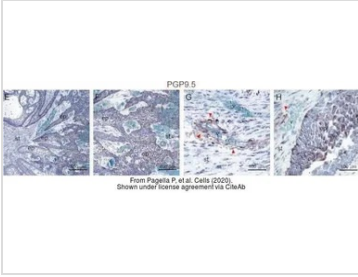
Sample: U87-MG cells were fixed in 4% paraformaldehyde at RT for 15 min.

Green: PGP9.5 stained by PGP9.5 antibody (GTx109637) diluted at 1:200.

Blue: Fluoroshield with DAPI (GTx30920).



For full product information, images and publications, please visit our [website](https://www.genetex.com).


GTX109637 IHC-P Image

The data was published in the journal Cells in 2020. [PMID: 32155948](https://pubmed.ncbi.nlm.nih.gov/32155948/)



For full product information, images and publications, please visit our [website](https://www.genetex.com).

GAP43 antibody

Cat. No. GTX127937

Host	Rabbit
Clonality	Polyclonal
Isotype	IgG
Application	WB, ICC/IF, IHC-P, IHC-Fr
Reactivity	Human, Mouse, Rat

Reference (5)
Package
100 µl, 25 µl

APPLICATION

Application Note

*Optimal dilutions/concentrations should be determined by the researcher.

Suggested dilution	Recommended dilution
WB	1:5000-1:30000
ICC/IF	1:100-1:1000
IHC-P	1:100-1:1000
IHC-Fr	1:100-1:1000

Not tested in other applications.

Calculated MW 24 kDa. ([Note](#))

PROPERTIES

Form	Liquid
Buffer	PBS, 20% Glycerol
Preservative	0.01% Thimerosal
Storage	Store as concentrated solution. Centrifuge briefly prior to opening vial. For short-term storage (1-2 weeks), store at 4°C. For long-term storage, aliquot and store at -20°C or below. Avoid multiple freeze-thaw cycles.
Concentration	1 mg/ml (Please refer to the vial label for the specific concentration.)
Immunogen	Carrier-protein conjugated synthetic peptide encompassing a sequence within the C-terminus region of rat GAP43. The exact sequence is proprietary.
Purification	Purified by antigen-affinity chromatography.
Conjugation	Unconjugated

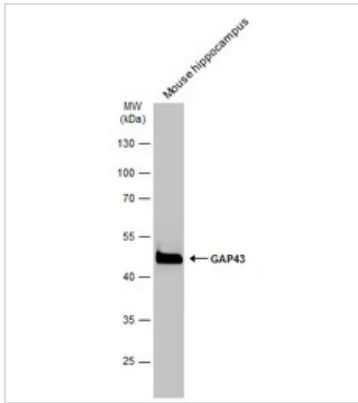


For full product information, images and publications, please visit our [website](#).

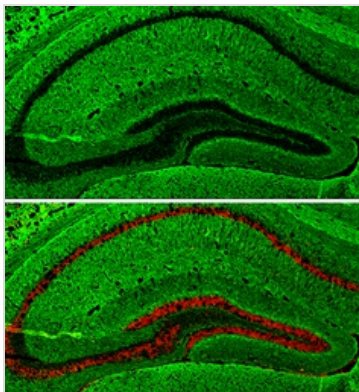
For laboratory research use only. Not for any clinical, therapeutic, or diagnostic use in humans or animals. Not for animal or human consumption.

Note

Purchasers shall not, and agree not to enable third parties to, analyze, copy, reverse engineer or otherwise attempt to determine the structure or sequence of the product.

DATA IMAGES

GTX127937 WB Image

Mouse tissue extract (50 µg) was separated by 10% SDS-PAGE, and the membrane was blotted with GAP43 antibody (GTX127937) diluted at 1:30000. The HRP-conjugated anti-rabbit IgG antibody (GTX213110-01) was used to detect the primary antibody.

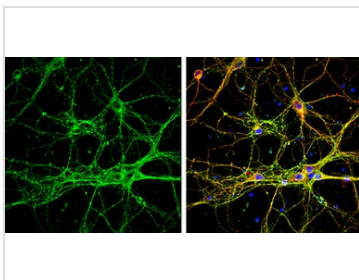

GTX127937 IHC-Fr Image

GAP43 antibody detects GAP43 protein expression by immunohistochemical analysis.

Sample: Frozen-sectioned adult mouse hippocampus.

Green: GAP43 protein stained by GAP43 antibody (GTX127937) diluted at 1:250.

Red: NeuN, stained by NeuN antibody [2Q158] (GTX30773) diluted at 1:500.


GTX127937 ICC/IF Image

GAP43 antibody detects GAP43 protein by immunofluorescent analysis.

Sample: DIV9 rat E18 primary cortical neurons were fixed in 4% paraformaldehyde at RT for 15 min.

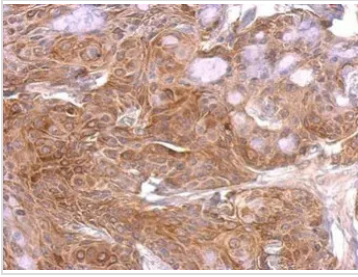
Green: GAP43 protein stained by GAP43 antibody (GTX127937) diluted at 1:500.

Red: beta Tubulin 3/ Tuj1, stained by beta Tubulin 3/ Tuj1 antibody [GT886] (GTX631830) diluted at 1:500.

Blue: Fluoroshield with DAPI (GTX30920).



For full product information, images and publications, please visit our [website](https://www.genetex.com).

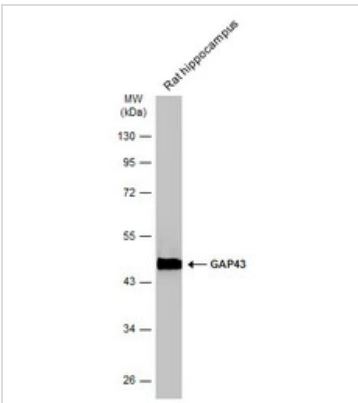

GTX127937 IHC-P Image

GAP43 antibody detects Gap43 protein at on Cal27 xenograft by immunohistochemical analysis.

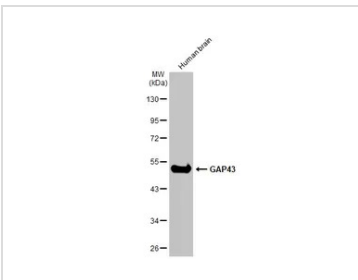
Sample: Paraffin-embedded Cal27 xenograft.

GAP43 antibody (GTX127937) dilution: 1:500.

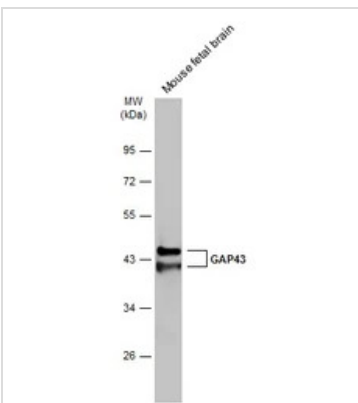
Antigen Retrieval: Trilogy™ (EDTA based, pH 8.0) buffer, 15min


GTX127937 WB Image

Rat tissue extract (50 µg) was separated by 10% SDS-PAGE, and the membrane was blotted with GAP43 antibody (GTX127937) diluted at 1:30000. The HRP-conjugated anti-rabbit IgG antibody (GTX213110-01) was used to detect the primary antibody.


GTX127937 WB Image

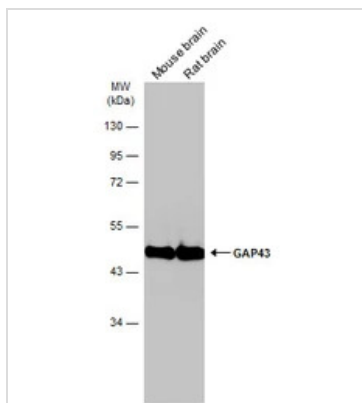
Human tissue extract (30 µg) was separated by 10% SDS-PAGE, and the membrane was blotted with GAP43 antibody (GTX127937) diluted at 1:30000. The HRP-conjugated anti-rabbit IgG antibody (GTX213110-01) was used to detect the primary antibody.


GTX127937 WB Image

Mouse tissue extract (50 µg) was separated by 10% SDS-PAGE, and the membrane was blotted with GAP43 antibody (GTX127937) diluted at 1:30000. The HRP-conjugated anti-rabbit IgG antibody (GTX213110-01) was used to detect the primary antibody.



For full product information, images and publications, please visit our [website](https://www.genetex.com).



GTx127937 WB Image

Various tissue extracts (50 µg) were separated by 10% SDS-PAGE, and the membrane was blotted with GAP43 antibody (GTx127937) diluted at 1:30000. The HRP-conjugated anti-rabbit IgG antibody (GTx213110-01) was used to detect the primary antibody.



For full product information, images and publications, please visit our [website](https://www.genetex.com).

Goat Anti-Rabbit IgG antibody (HRP)

Cat. No. GTX213110-01

Host	Goat
Clonality	Polyclonal
Isotype	IgG
Application	WB, IHC-P, ELISA
Reactivity	Rabbit

Reference (496)

Package

1 ml

APPLICATION

Application Note

*Optimal dilutions/concentrations should be determined by the researcher.

Suggested dilution	Recommended dilution
WB	Assay dependent
IHC-P	1:100-1:1000
ELISA	Assay dependent

Not tested in other applications.

PROPERTIES

Form	Liquid
Buffer	0.05M Tris, 0.15M NaCl, 1%BSA
Preservative	0.025% ProClin 300
Storage	Store as concentrated solution. Centrifuge briefly prior to opening vial. For short-term storage (1-2 weeks), store at 4°C. For long-term storage, aliquot and store at -20°C or below. Avoid multiple freeze-thaw cycles.
Concentration	0.5 mg/ml (Please refer to the vial label for the specific concentration.)
Immunogen	Highly purified whole rabbit IgG
Purification	Purified by antigen-affinity chromatography.
Conjugation	Horseradish peroxidase(HRP)

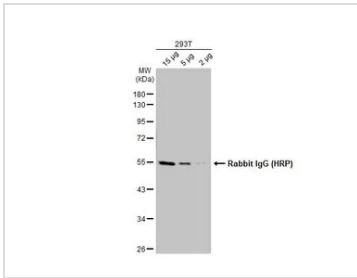
Note

For laboratory research use only. Not for any clinical, therapeutic, or diagnostic use in humans or animals. Not for animal or human consumption.

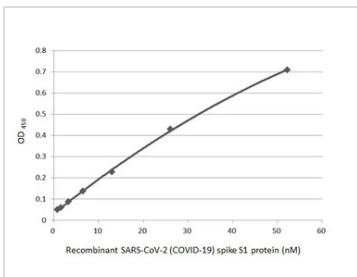
Purchasers shall not, and agree not to enable third parties to, analyze, copy, reverse engineer or otherwise attempt to determine the structure or sequence of the product.



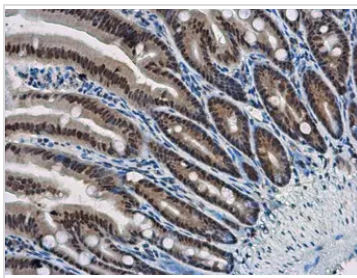
For full product information, images and publications, please visit our [website](#).

DATA IMAGES

GTX213110-01 WB Image

Various whole cell extracts were separated by 10% SDS-PAGE, and the membrane was blotted with Rabbit IgG antibody (HRP) (GTX213110-01) diluted at 1:10000.


GTX213110-01 ELISA Image

Indirect ELISA analysis performed by coating plate with recombinant SARS-CoV-2 (COVID-19) Spike S1 protein, His tag (active) (GTX135817-pro) (52.15-0.81 nM). Coated protein was probed with SARS-CoV-2 (COVID-19) Spike S1 antibody [HL134] (GTX635671) (1 µg/mL). Goat anti-rabbit IgG antibody (HRP) (GTX213110-01) (1:10000) was used to detect bound primary antibody.


GTX213110-01 IHC-P Image

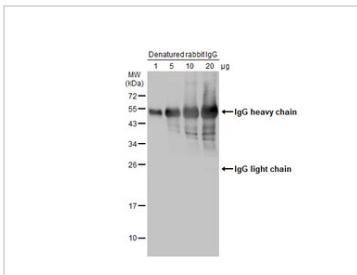
WBP11 antibody detects WBP11 protein at nucleus in mouse intestine by immunohistochemical analysis.

Sample: Paraffin-embedded mouse intestine.

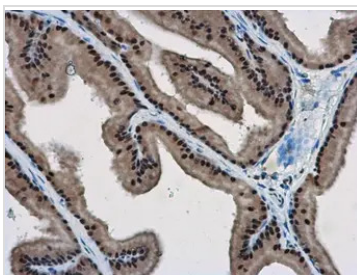
WBP11 antibody (GTX118654) diluted at 1:500.

The signal was developed by Rabbit IgG antibody (HRP) (GTX213110-01)

Antigen Retrieval: Citrate buffer, pH 6.0, 15 min


GTX213110-01 WB Image

Various amounts of denatured rabbit IgG protein were separated by 12% SDS-PAGE, and the membrane was blotted with HRP-conjugated anti-rabbit IgG antibody (GTX213110-01) diluted at 1:5000.


GTX213110-01 IHC-P Image

WBP11 antibody detects WBP11 protein at nucleus in rat prostate by immunohistochemical analysis.

Sample: Paraffin-embedded rat prostate.

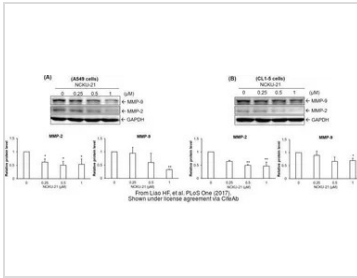
WBP11 antibody (GTX118654) diluted at 1:500.

The signal was developed by Rabbit IgG antibody (HRP) (GTX213110-01).

Antigen Retrieval: Citrate buffer, pH 6.0, 15 min

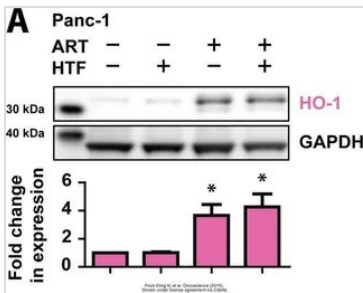


For full product information, images and publications, please visit our [website](https://www.genetex.com).



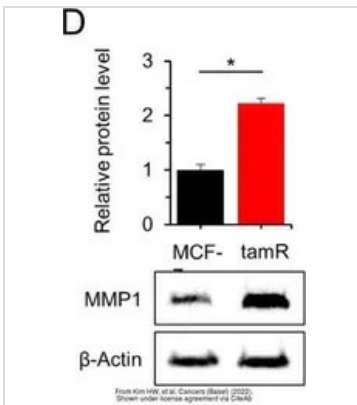
GTx213110-01 WB Image

The data was published in the journal PLoS One in 2017. [PMID: 28945763](#)



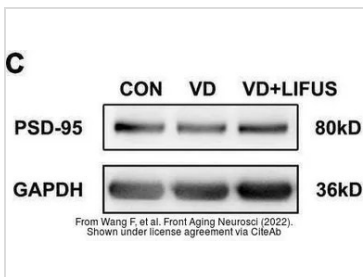
GTx213110-01 WB Image

The data was published in the journal Oncoscience in 2015. [PMID: 26097885](#)



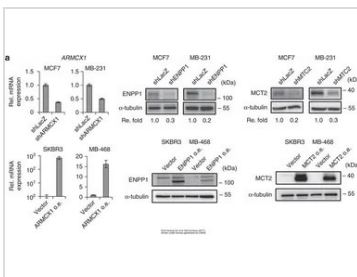
GTx213110-01 WB Image

The data was published in the 2022 in Cancers (Basel). [PMID: 35267540](#)



GTx213110-01 WB Image

The data was published in the 2022 in Front Aging Neurosci. [PMID: 35264943](#)

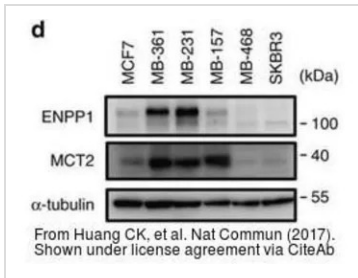


GTx213110-01 WB Image

The data was published in the 2017 in Nat Commun. [PMID: 28281525](#)

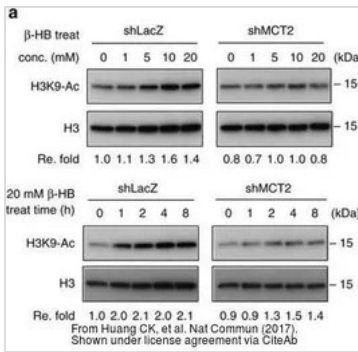


For full product information, images and publications, please visit our [website](#).



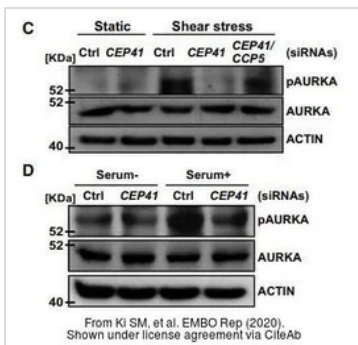
GTx213110-01 WB Image

The data was published in the 2017 in Nat Commun. [PMID: 28281525](#)



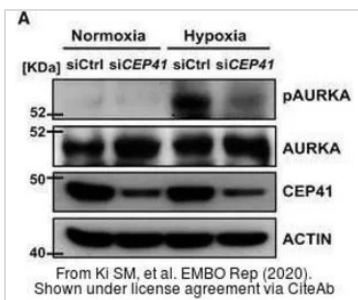
GTx213110-01 WB Image

The data was published in the 2017 in Nat Commun. [PMID: 28281525](#)



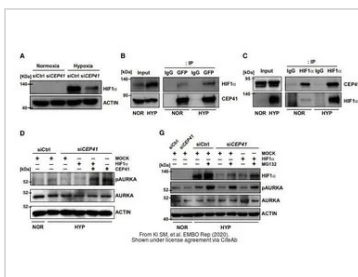
GTx213110-01 WB Image

The data was published in the journal EMBO Rep in 2020. [PMID: 31885126](#)



GTx213110-01 WB Image

The data was published in the journal EMBO Rep in 2020. [PMID: 31885126](#)

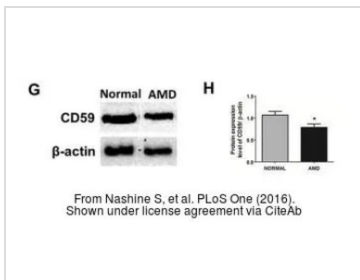


GTx213110-01 WB Image

The data was published in the journal EMBO Rep in 2020. [PMID: 31885126](#)

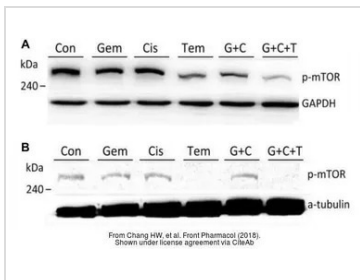


For full product information, images and publications, please visit our [website](#).



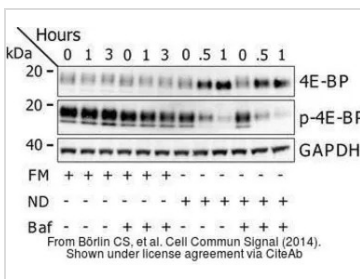
GTx213110-01 WB Image

The data was published in the 2016 in PLoS One. [PMID: 27486856](https://pubmed.ncbi.nlm.nih.gov/27486856/)



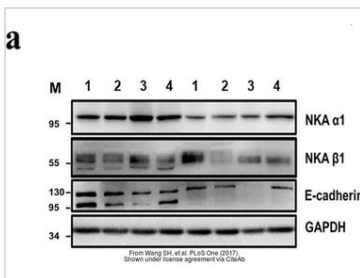
GTx213110-01 WB Image

The data was published in the journal Front Pharmacol in 2018. [PMID: 30087612](https://pubmed.ncbi.nlm.nih.gov/30087612/)



GTx213110-01 WB Image

The data was published in the journal Cell Commun Signal in 2014. [PMID: 25214434](https://pubmed.ncbi.nlm.nih.gov/25214434/)



GTx213110-01 WB Image

The data was published in the journal PLoS One in 2017. [PMID: 28832634](https://pubmed.ncbi.nlm.nih.gov/28832634/)



For full product information, images and publications, please visit our [website](https://www.genetex.com).