

GTX300082

Mitochondrial Marker Antibody Panel

Reference (2)

Product Content

Cat No	Product Name	Reactivity	Application	Package
GTX101105	Prohibitin antibody	Human, Mouse, Rat	WB, ICC/IF, IHC-P, IP	25 µl
GTX108585	Cytochrome C antibody	Human, Mouse, Rat, Drosophila, Dog	WB, ICC/IF, IHC-P, IHC-Fr	25 µl
GTX110089	HSP60 antibody	Human, Mouse, Rat, Zebrafish, Drosophila, Hamster	WB, ICC/IF, IHC-P, ELISA	25 µl
GTX114187	VDAC1 antibody [N1C2]	Human, Mouse, Rat	WB, ICC/IF, IHC-P	25 µl
GTX114330	COX4 antibody	Human, Mouse, Rat	WB, ICC/IF, IHC-P, IHC-Fr	25 µl
GTX213110-01	Goat Anti-Rabbit IgG antibody (HRP)	Rabbit	WB, IHC-P, ELISA	25 µl

Note

For In vitro laboratory use only. Not for any clinical, therapeutic, or diagnostic use in humans or animals. Not for animal or human consumption.



For full product information, images and publications, please visit our [website](#).

Prohibitin antibody

Cat. No. GTX101105

Host	Rabbit
Clonality	Polyclonal
Isotype	IgG
Application	WB, ICC/IF, IHC-P, IP
Reactivity	Human, Mouse, Rat

Reference (6)

★★★★★ Review (3)

Package

100 µl, 25 µl

APPLICATION

Application Note

*Optimal dilutions/concentrations should be determined by the researcher.

Suggested dilution	Recommended dilution
WB	1:500-1:3000
ICC/IF	1:100-1:1000
IHC-P	1:100-1:1000
IP	1:100-1:500

Not tested in other applications.

Calculated MW 30 kDa. ([Note](#))

PROPERTIES

Form	Liquid
Buffer	PBS, 1% BSA, 20% Glycerol
Preservative	0.025% ProClin 300
Storage	Store as concentrated solution. Centrifuge briefly prior to opening vial. For short-term storage (1-2 weeks), store at 4°C. For long-term storage, aliquot and store at -20°C or below. Avoid multiple freeze-thaw cycles.
Concentration	0.34 mg/ml (Please refer to the vial label for the specific concentration.)
Immunogen	Recombinant protein encompassing a sequence within the center region of human Prohibitin. The exact sequence is proprietary.
Purification	Purified by antigen-affinity chromatography.
Conjugation	Unconjugated

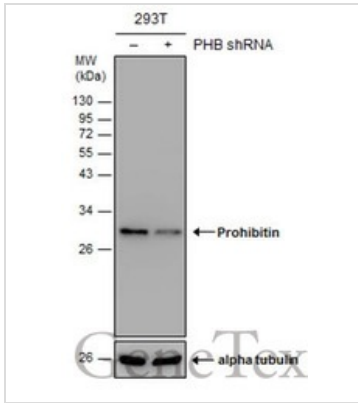


For full product information, images and publications, please visit our [website](#).

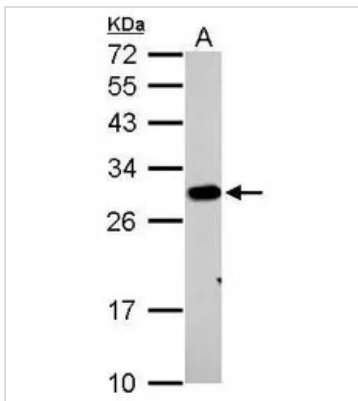
For laboratory research use only. Not for any clinical, therapeutic, or diagnostic use in humans or animals. Not for animal or human consumption.

Note

Purchasers shall not, and agree not to enable third parties to, analyze, copy, reverse engineer or otherwise attempt to determine the structure or sequence of the product.

DATA IMAGES

GTX101105 WB Image

Non-transfected (-) and transfected (+) 293T whole cell extracts (30 µg) were separated by 12% SDS-PAGE, and the membrane was blotted with Prohibitin antibody (GTX101105) diluted at 1:2000. The HRP-conjugated anti-rabbit IgG antibody (GTX213110-01) was used to detect the primary antibody.


GTX101105 WB Image

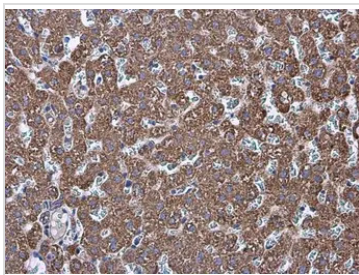
Prohibitin antibody detects PHB protein by western blot analysis.

A. 30 µg PC-12 whole cell lysate/extract

12% SDS-PAGE

Prohibitin antibody (GTX101105) dilution: 1:1000

The HRP-conjugated anti-rabbit IgG antibody (GTX213110-01) was used to detect the primary antibody.


GTX101105 IHC-P Image

Prohibitin antibody detects Prohibitin protein at cytoplasm in rat liver by immunohistochemical analysis.

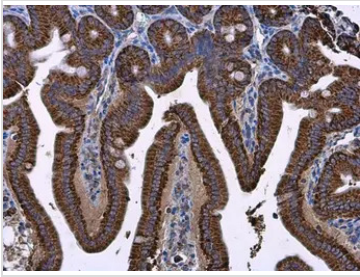
Sample: Paraffin-embedded rat liver.

Prohibitin antibody (GTX101105) diluted at 1:500.

Antigen Retrieval: Citrate buffer, pH 6.0, 15 min



For full product information, images and publications, please visit our [website](https://www.genetex.com).



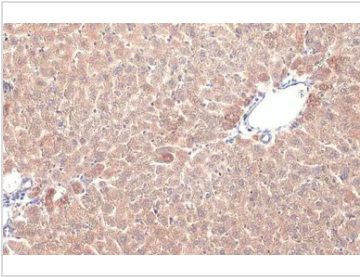
GTX101105 IHC-P Image

Prohibitin antibody detects Prohibitin protein at cytoplasm in mouse intestine by immunohistochemical analysis.

Sample: Paraffin-embedded mouse intestine.

Prohibitin antibody (GTX101105) diluted at 1:500.

Antigen Retrieval: Citrate buffer, pH 6.0, 15 min



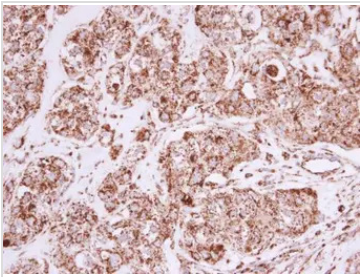
GTX101105 IHC-P Image

Prohibitin antibody detects Prohibitin protein at mitochondria by immunohistochemical analysis.

Sample: Paraffin-embedded mouse liver.

Prohibitin stained by Prohibitin antibody (GTX101105) diluted at 1:500.

Antigen Retrieval: Citrate buffer, pH 6.0, 15 min



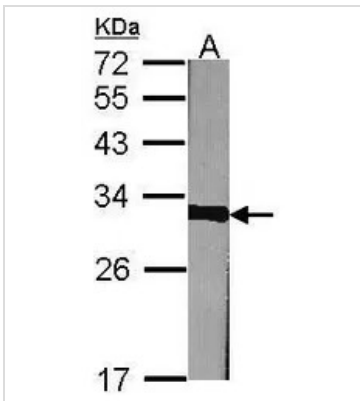
GTX101105 IHC-P Image

Prohibitin antibody detects Prohibitin protein at mitochondria in human breast carcinoma by immunohistochemical analysis.

Sample: Paraffin-embedded human breast carcinoma.

Prohibitin antibody (GTX101105) diluted at 1:500.

Antigen Retrieval: Trilogy™ (EDTA based, pH 8.0) buffer, 15min



GTX101105 WB Image

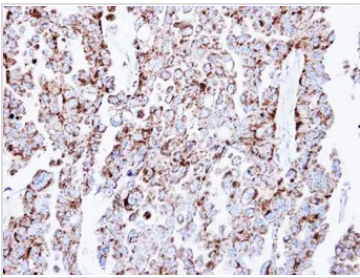
Sample (30 µg of whole cell lysate)

A:NIH-3T3

12% SDS PAGE

GTX101105 diluted at 1:1000

The HRP-conjugated anti-rabbit IgG antibody (GTX213110-01) was used to detect the primary antibody.



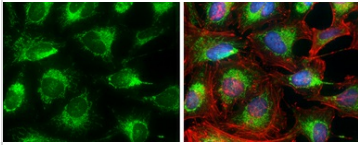
GTX101105 IHC-P Image

Immunohistochemical analysis of paraffin-embedded OVCAR3 xenograft, using Prohibitin(GTX101105) antibody at 1:500 dilution.

Antigen Retrieval: Trilogy™ (EDTA based, pH 8.0) buffer, 15min



For full product information, images and publications, please visit our [website](https://www.genetex.com).



GTX101105 ICC/IF Image

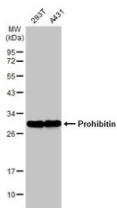
Prohibitin antibody detects Prohibitin protein at mitochondria by immunofluorescent analysis.

Sample: HeLa cells were fixed in 4% paraformaldehyde at RT for 15 min.

Green: Prohibitin protein stained by Prohibitin antibody (GTX101105) diluted at 1:500.

Red: Phalloidin, a cytoskeleton marker, diluted at 1:100.

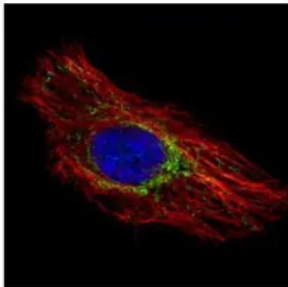
Blue: Hoechst 33342 staining.



GTX101105 WB Image

Various whole cell extracts (30 µg) were separated by 12% SDS-PAGE, and the membrane was blotted with Prohibitin antibody (GTX101105) diluted at 1:1000. The HRP-conjugated anti-rabbit IgG antibody (GTX213110-01) was used to detect the primary antibody.

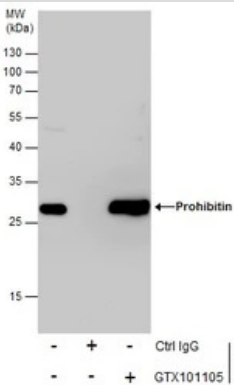
GTX101105



GTX101105 ICC/IF Image

Confocal immunofluorescence analysis (Olympus FV10i) of methanol-fixed HeLa, using

Prohibitin(GTX101105) antibody (Green) at 1:500 dilution. Alpha-tubulin filaments were labeled with GTX11304 (Red) at 1:2000.



GTX101105 IP Image

Immunoprecipitation of Prohibitin protein from 293T whole cell extracts using 5 µg of Prohibitin antibody (GTX101105).

Western blot analysis was performed using Prohibitin antibody (GTX101105).

EasyBlot anti-Rabbit IgG (GTX221666-01) was used as a secondary reagent.



For full product information, images and publications, please visit our [website](https://www.genetex.com).

Cytochrome C antibody

Cat. No. GTX108585

Host	Rabbit
Clonality	Polyclonal
Isotype	IgG
Application	WB, ICC/IF, IHC-P, IHC-Fr
Reactivity	Human, Mouse, Rat, Drosophila, Dog

Reference (33)

★★★★★ Review (3)

Package

100 µl, 25 µl

APPLICATION

Application Note

*Optimal dilutions/concentrations should be determined by the researcher.

Suggested dilution	Recommended dilution
WB	1:500-1:3000
ICC/IF	Assay dependent
IHC-P	1:100-1:1000
IHC-Fr	Assay dependent

Not tested in other applications.

Calculated MW 12 kDa. ([Note](#))

PROPERTIES

Form	Liquid
Buffer	PBS, 1% BSA, 20% Glycerol
Preservative	0.025% ProClin 300
Storage	Store as concentrated solution. Centrifuge briefly prior to opening vial. For short-term storage (1-2 weeks), store at 4°C. For long-term storage, aliquot and store at -20°C or below. Avoid multiple freeze-thaw cycles.
Concentration	0.18 mg/ml (Please refer to the vial label for the specific concentration.)
Immunogen	Full length human Cytochrome C Recombinant protein.
Purification	Purified by antigen-affinity chromatography.
Conjugation	Unconjugated

Note

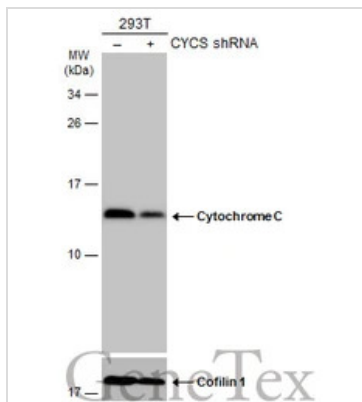
For laboratory research use only. Not for any clinical, therapeutic, or diagnostic use in humans or animals. Not for animal or human consumption.

Purchasers shall not, and agree not to enable third parties to, analyze, copy, reverse engineer or otherwise attempt to determine the structure or sequence of the product.

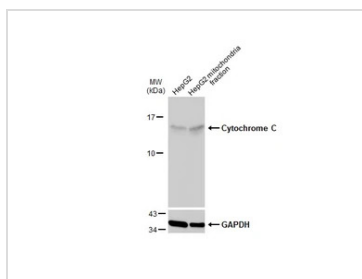


For full product information, images and publications, please visit our [website](#).

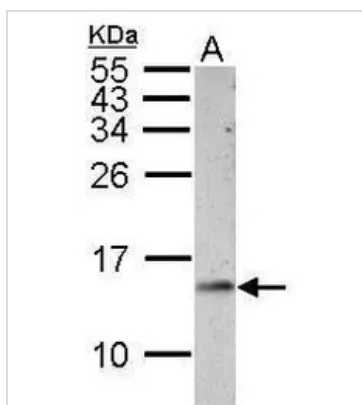
Date 2024 / 03 / 28 Page 6 of 19

DATA IMAGES

GTX108585 WB Image

Non-transfected (–) and transfected (+) 293T whole cell extracts (30 µg) were separated by 15% SDS-PAGE, and the membrane was blotted with Cytochrome C antibody (GTX108585) diluted at 1:1000. The HRP-conjugated anti-rabbit IgG antibody (GTX213110-01) was used to detect the primary antibody.


GTX108585 WB Image

HepG2 and mitochondria extracts (30 µg) were separated by SDS-PAGE, and the membrane was blotted with Cytochrome C antibody (GTX108585) diluted at 1:2000. The HRP-conjugated anti-rabbit IgG antibody (GTX213110-01) was used to detect the primary antibody, and the signal was developed with Trident pico Western HRP Substrate.


GTX108585 WB Image

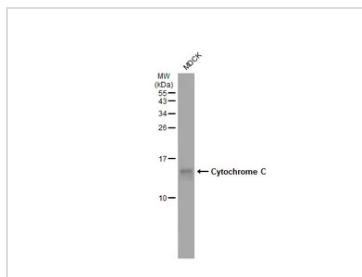
Sample (30 µg of whole cell lysate)

A: PC-12

15% SDS PAGE

GTX108585 diluted at 1:1000

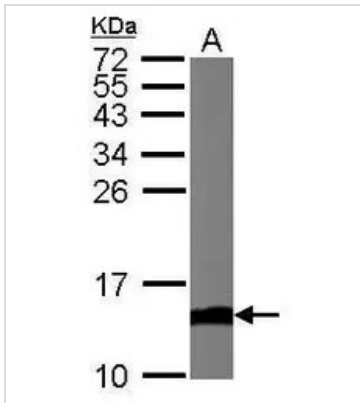
The HRP-conjugated anti-rabbit IgG antibody (GTX213110-01) was used to detect the primary antibody.


GTX108585 WB Image

Whole cell extract (30 µg) was separated by 15% SDS-PAGE, and the membrane was blotted with Cytochrome C antibody (GTX108585) diluted at 1:1000. The HRP-conjugated anti-rabbit IgG antibody (GTX213110-01) was used to detect the primary antibody.



For full product information, images and publications, please visit our [website](https://www.genetex.com).


GTX108585 WB Image

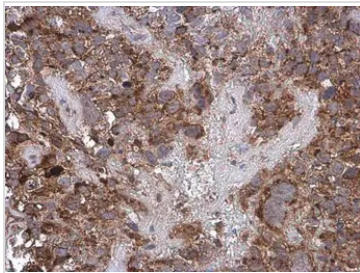
Sample (50 µg of whole cell lysate)

A: Mouse brain

15% SDS PAGE

GTX108585 diluted at 1:1000

The HRP-conjugated anti-rabbit IgG antibody (GTX213110-01) was used to detect the primary antibody.

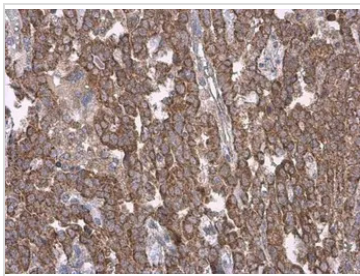

GTX108585 IHC-P Image

Cytochrome C antibody detects Cytochrome C protein at cytoplasm by immunohistochemical analysis.

Sample: Paraffin-embedded human cervical carcinoma.

Cytochrome C stained by Cytochrome C antibody (GTX108585) diluted at 1:500.

Antigen Retrieval: Citrate buffer, pH 6.0, 15 min

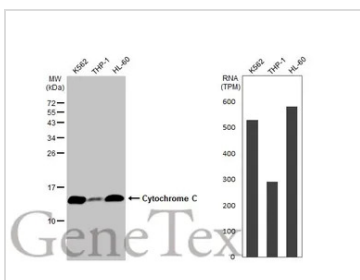

GTX108585 IHC-P Image

Cytochrome C antibody detects Cytochrome C protein at cytoplasm by immunohistochemical analysis.

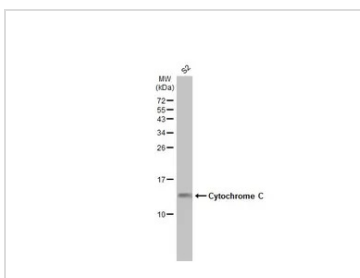
Sample: Paraffin-embedded human endometrial carcinoma.

Cytochrome C stained by Cytochrome C antibody (GTX108585) diluted at 1:500.

Antigen Retrieval: Citrate buffer, pH 6.0, 15 min


GTX108585 WB Image

Various whole cell extracts (30 µg) were separated by 15% SDS-PAGE, and the membrane was blotted with Cytochrome C antibody (GTX108585) diluted at 1:1000. The HRP-conjugated anti-rabbit IgG antibody (GTX213110-01) was used to detect the primary antibody, and the signal was developed with Trident ECL plus-Enhanced. Corresponding RNA expression data for the same cell lines are based on Human Protein Atlas program.


GTX108585 WB Image

Whole cell extract (30 µg) was separated by 15% SDS-PAGE, and the membrane was blotted with Cytochrome C antibody (GTX108585) diluted at 1:1000. The HRP-conjugated anti-rabbit IgG antibody (GTX213110-01) was used to detect the primary antibody, and the signal was developed with Trident ECL plus-Enhanced.



For full product information, images and publications, please visit our [website](https://www.genetex.com).

HSP60 antibody

Cat. No. GTX110089

Host	Rabbit
Clonality	Polyclonal
Isotype	IgG
Application	WB, ICC/IF, IHC-P, ELISA
Reactivity	Human, Mouse, Rat, Zebrafish, Drosophila, Hamster

Reference (24)

★★★★★ Review (9)

Package

100 µl, 25 µl

APPLICATION

Application Note

*Optimal dilutions/concentrations should be determined by the researcher.

Suggested dilution	Recommended dilution
WB	1:5000-1:20000
ICC/IF	1:100-1:1000
IHC-P	1:100-1:1000
ELISA	Assay dependent

Not tested in other applications.

Calculated MW 61 kDa. ([Note](#))

PROPERTIES

Form	Liquid
Buffer	PBS, 1% BSA, 20% Glycerol
Preservative	0.025% ProClin 300
Storage	Store as concentrated solution. Centrifuge briefly prior to opening vial. For short-term storage (1-2 weeks), store at 4°C. For long-term storage, aliquot and store at -20°C or below. Avoid multiple freeze-thaw cycles.
Concentration	0.3 mg/ml (Please refer to the vial label for the specific concentration.)
Immunogen	Recombinant protein encompassing a sequence within the center region of human HSP60. The exact sequence is proprietary.
Purification	Purified by antigen-affinity chromatography.
Conjugation	Unconjugated

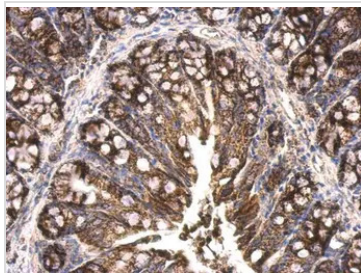


For full product information, images and publications, please visit our [website](#).

For laboratory research use only. Not for any clinical, therapeutic, or diagnostic use in humans or animals. Not for animal or human consumption.

Note

Purchasers shall not, and agree not to enable third parties to, analyze, copy, reverse engineer or otherwise attempt to determine the structure or sequence of the product.

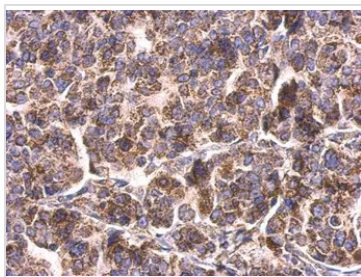
DATA IMAGES

GTx110089 IHC-P Image

HSP60 antibody detects HSP60 protein at mitochondrion on mouse colon by immunohistochemical analysis.

Sample: Paraffin-embedded mouse colon.

HSP60 antibody (GTx110089) dilution: 1:500.

Antigen Retrieval: Trilogy™ (EDTA based, pH 8.0) buffer, 15min

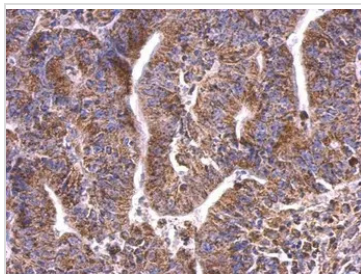

GTx110089 IHC-P Image

HSP60 antibody detects HSP60 protein at mitochondria on human breast carcinoma by immunohistochemical analysis.

Sample: Paraffin-embedded human breast carcinoma.

HSP60 antibody (GTx110089) dilution: 1:500.

Antigen Retrieval: Trilogy™ (EDTA based, pH 8.0) buffer, 15min

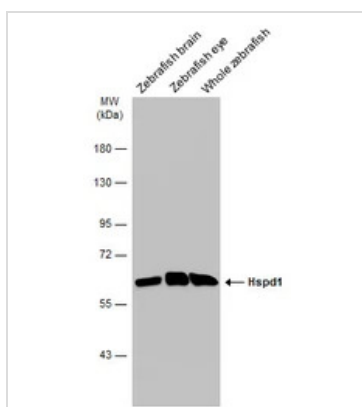

GTx110089 IHC-P Image

HSP60 antibody detects HSP60 protein at mitochondria on human colon carcinoma by immunohistochemical analysis.

Sample: Paraffin-embedded human colon carcinoma.

HSP60 antibody (GTx110089) dilution: 1:500.

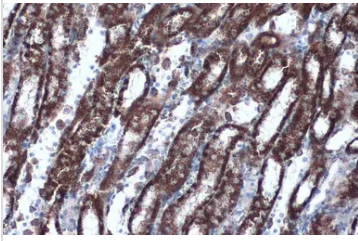
Antigen Retrieval: Trilogy™ (EDTA based, pH 8.0) buffer, 15min


GTx110089 WB Image

Various tissue extracts (30 µg) were separated by 7.5% SDS-PAGE, and the membrane was blotted with HSP60 antibody (GTx110089) diluted at 1:1000. The HRP-conjugated anti-rabbit IgG antibody (GTx213110-01) was used to detect the primary antibody.



For full product information, images and publications, please visit our [website](https://www.genetex.com).



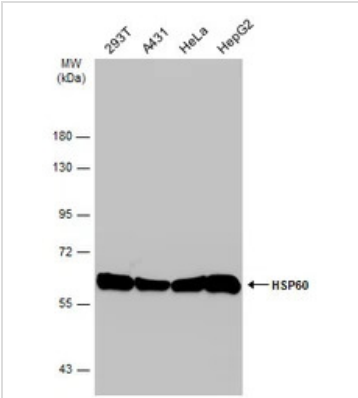
GTX110089 IHC-P Image

HSP60 antibody detects HSP60 protein at mitochondria by immunohistochemical analysis.

Sample: Paraffin-embedded rat kidney.

HSP60 stained by HSP60 antibody (GTX110089) diluted at 1:1000.

Antigen Retrieval: Citrate buffer, pH 6.0, 15 min

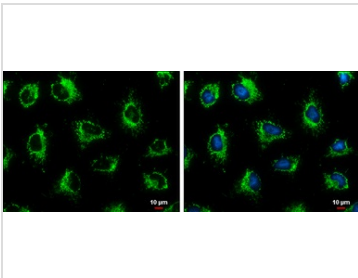


GTX110089 WB Image

Various whole cell extracts (30 µg) were separated by 7.5% SDS-PAGE, and the membrane was blotted with

HSP60 antibody (GTX110089) diluted at 1:10000. The HRP-conjugated anti-rabbit IgG antibody

(GTX213110-01) was used to detect the primary antibody.



GTX110089 ICC/IF Image

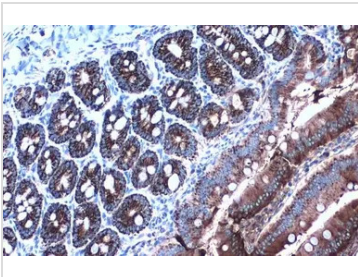
HSP60 antibody detects HSP60 protein at mitochondria by immunofluorescent analysis.

Sample: HeLa cells were fixed in ice-cold MeOH for 5 min.

Green: HSP60 protein stained by HSP60 antibody (GTX110089) diluted at 1:500.

Blue: Hoechst 33342 staining.

Scale bar = 10 µm.



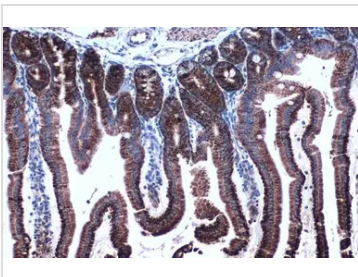
GTX110089 IHC-P Image

HSP60 antibody detects HSP60 protein at mitochondria by immunohistochemical analysis.

Sample: Paraffin-embedded rat duodenum.

HSP60 stained by HSP60 antibody (GTX110089) diluted at 1:500.

Antigen Retrieval: Citrate buffer, pH 6.0, 15 min



GTX110089 IHC-P Image

HSP60 antibody detects HSP60 protein at mitochondria by immunohistochemical analysis.

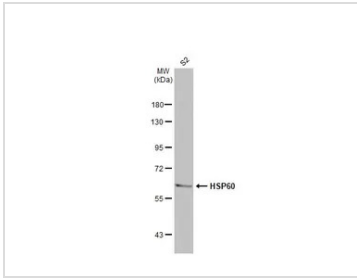
Sample: Paraffin-embedded mouse intestine.

HSP60 stained by HSP60 antibody (GTX110089) diluted at 1:1000.

Antigen Retrieval: Citrate buffer, pH 6.0, 15 min

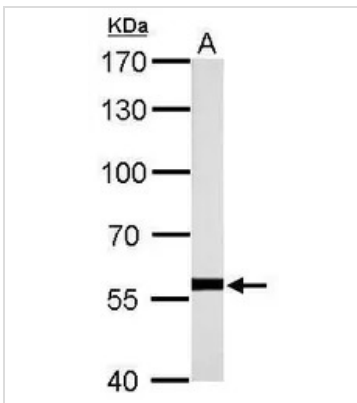


For full product information, images and publications, please visit our [website](https://www.genetex.com).


GTx110089 WB Image

Whole cell extract (30 µg) was separated by 7.5% SDS-PAGE, and the membrane was blotted with HSP60 antibody (GTx110089) diluted at 1:1000. The HRP-conjugated anti-rabbit IgG antibody (GTx213110-01) was used to detect the primary antibody.

Drosophila Hsp60A is the homolog of mammalian Hsp60. (Gene ID: 32045/ UniProt: O02649)


GTx110089 WB Image

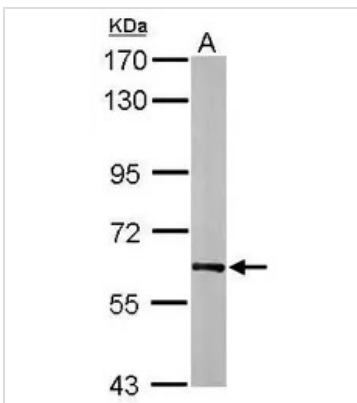
HSP60 antibody detects HSPD1 protein by western blot analysis.

A. 50 µg rat brain lysate/extract

7.5% SDS-PAGE

HSP60 antibody (GTx110089) dilution: 1:10000

The HRP-conjugated anti-rabbit IgG antibody (GTx213110-01) was used to detect the primary antibody.


GTx110089 WB Image

Sample (20 µg of whole cell lysate)

A: mouse brain

7.5% SDS PAGE

GTx110089 diluted at 1:20000

The HRP-conjugated anti-rabbit IgG antibody (GTx213110-01) was used to detect the primary antibody.



For full product information, images and publications, please visit our [website](https://www.genetex.com).

VDAC1 antibody [N1C2]

Cat. No. GTX114187

Host	Rabbit
Clonality	Polyclonal
Isotype	IgG
Application	WB, ICC/IF, IHC-P
Reactivity	Human, Mouse, Rat

Reference (20)

★★★★★ Review (3)

Package

100 µl, 25 µl

APPLICATION

Application Note

*Optimal dilutions/concentrations should be determined by the researcher.

Suggested dilution	Recommended dilution
WB	1:500-1:3000
ICC/IF	Assay dependent
IHC-P	1:100-1:1000

Not tested in other applications.

Calculated MW 31 kDa. ([Note](#))

PROPERTIES

Form	Liquid
Buffer	0.1M Tris, 0.1M Glycine, 20% Glycerol
Preservative	0.01% Thimerosal
Storage	Store as concentrated solution. Centrifuge briefly prior to opening vial. For short-term storage (1-2 weeks), store at 4°C. For long-term storage, aliquot and store at -20°C or below. Avoid multiple freeze-thaw cycles.
Concentration	0.35 mg/ml (Please refer to the vial label for the specific concentration.)
Immunogen	Recombinant protein encompassing a sequence within the center region of human VDAC1. The exact sequence is proprietary.
Purification	Purified by antigen-affinity chromatography.
Conjugation	Unconjugated

Note

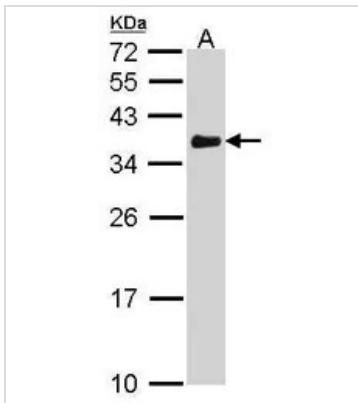
For laboratory research use only. Not for any clinical, therapeutic, or diagnostic use in humans or animals. Not for animal or human consumption.

Purchasers shall not, and agree not to enable third parties to, analyze, copy, reverse engineer or otherwise attempt to determine the structure or sequence of the product.



For full product information, images and publications, please visit our [website](#).

DATA IMAGES



GTX114187 WB Image

Sample (30 µg of whole cell lysate)

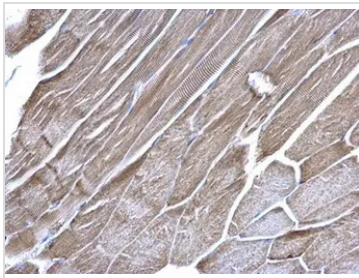
A: A431 (GTX27909)

12% SDS PAGE

VDAC1 antibody

GTX114187 diluted at 1:1000

The HRP-conjugated anti-rabbit IgG antibody (GTX213110-01) was used to detect the primary antibody.



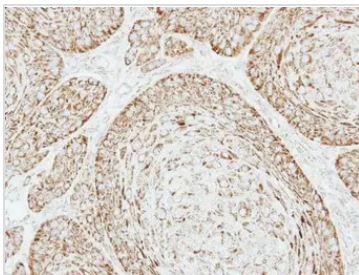
GTX114187 IHC-P Image

VDAC1 antibody [N1C2] detects VDAC1 protein at mitochondria on mouse muscle by immunohistochemical analysis.

Sample: Paraffin-embedded mouse muscle.

VDAC1 antibody [N1C2] (GTX114187) dilution: 1:500.

Antigen Retrieval: Trilogy™ (EDTA based, pH 8.0) buffer, 15min



GTX114187 IHC-P Image

Immunohistochemical analysis of paraffin-embedded Cal27 xenograft, using VDAC1(GTX114187) antibody at 1:500 dilution.

Antigen Retrieval: Trilogy™ (EDTA based, pH 8.0) buffer, 15min



For full product information, images and publications, please visit our [website](#).

COX4 antibody

Cat. No. GTX114330

Host	Rabbit
Clonality	Polyclonal
Isotype	IgG
Application	WB, ICC/IF, IHC-P, IHC-Fr
Reactivity	Human, Mouse, Rat

Reference (31)

★★★★★ Review (8)

Package

100 µl, 25 µl

APPLICATION

Application Note

*Optimal dilutions/concentrations should be determined by the researcher.

Suggested dilution	Recommended dilution
WB	1:500-1:3000
ICC/IF	1:100-1:1000
IHC-P	1:100-1:1000
IHC-Fr	Assay dependent

Not tested in other applications.

Calculated MW 20 kDa. ([Note](#))

PROPERTIES

Form	Liquid
Buffer	PBS, 1% BSA, 20% Glycerol
Preservative	0.025% ProClin 300
Storage	Store as concentrated solution. Centrifuge briefly prior to opening vial. For short-term storage (1-2 weeks), store at 4°C. For long-term storage, aliquot and store at -20°C or below. Avoid multiple freeze-thaw cycles.
Concentration	0.42 mg/ml (Please refer to the vial label for the specific concentration.)
Immunogen	Recombinant protein encompassing a sequence within the center region of human COX4. The exact sequence is proprietary.
Purification	Purified by antigen-affinity chromatography.
Conjugation	Unconjugated

Note

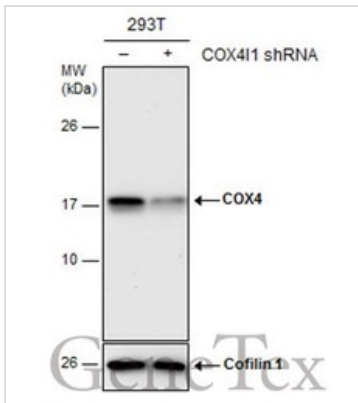
For laboratory research use only. Not for any clinical, therapeutic, or diagnostic use in humans or animals. Not for animal or human consumption.

Purchasers shall not, and agree not to enable third parties to, analyze, copy, reverse engineer or otherwise attempt to determine the structure or sequence of the product.

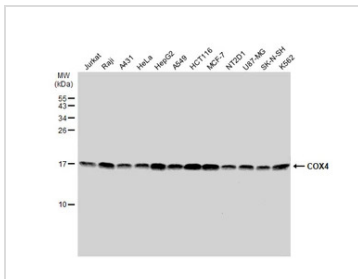


For full product information, images and publications, please visit our [website](#).

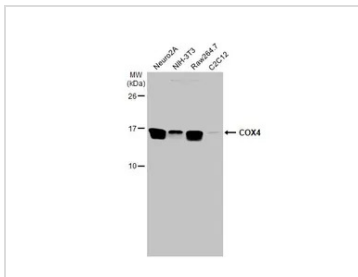
DATA IMAGES


GTX114330 WB Image

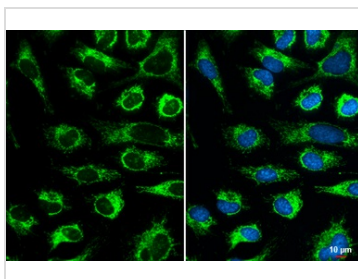
Non-transfected (–) and transfected (+) 293T whole cell extracts (30 µg) were separated by 15% SDS-PAGE, and the membrane was blotted with COX4 antibody (GTX114330) diluted at 1:3000. The HRP-conjugated anti-rabbit IgG antibody (GTX213110-01) was used to detect the primary antibody.


GTX114330 WB Image

Various whole cell extracts (30 µg) were separated by 15% SDS-PAGE, and the membrane was blotted with COX4 antibody (GTX114330) diluted at 1:1000. The HRP-conjugated anti-rabbit IgG antibody (GTX213110-01) was used to detect the primary antibody.


GTX114330 WB Image

Various whole cell extracts (30 µg) were separated by 15% SDS-PAGE, and the membrane was blotted with COX4 antibody (GTX114330) diluted at 1:1000. The HRP-conjugated anti-rabbit IgG antibody (GTX213110-01) was used to detect the primary antibody.


GTX114330 ICC/IF Image

COX4 antibody detects COX4 protein at mitochondria by immunofluorescent analysis.

Sample: HeLa cells were fixed in ice-cold MeOH for 5 min.

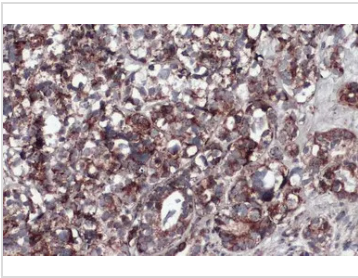
Green: COX4 stained by COX4 antibody (GTX114330) diluted at 1:500.

Blue: Hoechst 33342 staining.

Scale bar= 10 µm.



For full product information, images and publications, please visit our [website](https://www.genetex.com).

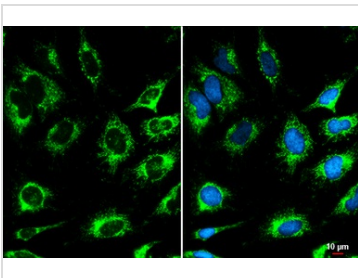

GTX114330 IHC-P Image

COX4 antibody detects COX4 protein at mitochondria by immunohistochemical analysis.

Sample: Paraffin-embedded human endometrial carcinoma.

COX4 stained by COX4 antibody (GTX114330) diluted at 1:500.

Antigen Retrieval: Citrate buffer, pH 6.0, 15 min


GTX114330 ICC/IF Image

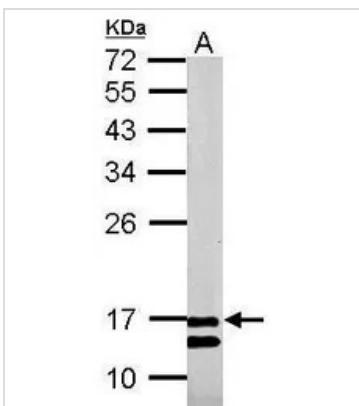
COX4 antibody detects COX4 protein at mitochondria by immunofluorescent analysis.

Sample: HeLa cells were fixed in ice-cold MeOH for 5 min.

Green: COX4 stained by COX4 antibody (GTX114330) diluted at 1:500.

Blue: Hoechst 33342 staining.

Scale bar= 10 µm.


GTX114330 WB Image

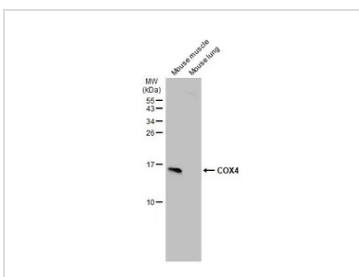
Sample (50 µg of whole cell lysate)

A: rat muscle

12% SDS PAGE

GTX114330 diluted at 1:500

The HRP-conjugated anti-rabbit IgG antibody (GTX213110-01) was used to detect the primary antibody.


GTX114330 WB Image

Various tissue extracts (50 µg) were separated by 15% SDS-PAGE, and the membrane was blotted with COX4 antibody (GTX114330) diluted at 1:1000. The HRP-conjugated anti-rabbit IgG antibody (GTX213110-01) was used to detect the primary antibody.



For full product information, images and publications, please visit our [website](https://www.genetex.com).

Goat Anti-Rabbit IgG antibody (HRP)

Cat. No. GTX213110-01

Host	Goat
Clonality	Polyclonal
Isotype	IgG
Application	WB, IHC-P, ELISA
Reactivity	Rabbit

Reference (495)

★★★★★ Review (14)

Package
1 ml

APPLICATION

Application Note

*Optimal dilutions/concentrations should be determined by the researcher.

Suggested dilution	Recommended dilution
WB	Assay dependent
IHC-P	1:100-1:1000
ELISA	Assay dependent

Not tested in other applications.

PROPERTIES

Form	Liquid
Buffer	0.05M Tris, 0.15M NaCl, 1%BSA
Preservative	0.025% ProClin 300
Storage	Store as concentrated solution. Centrifuge briefly prior to opening vial. For short-term storage (1-2 weeks), store at 4°C. For long-term storage, aliquot and store at -20°C or below. Avoid multiple freeze-thaw cycles.
Concentration	0.5 mg/ml (Please refer to the vial label for the specific concentration.)
Immunogen	Highly purified whole rabbit IgG
Purification	Purified by antigen-affinity chromatography.
Conjugation	Horseradish peroxidase(HRP)

Note

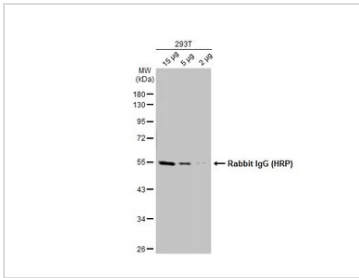
For laboratory research use only. Not for any clinical, therapeutic, or diagnostic use in humans or animals. Not for animal or human consumption.

Purchasers shall not, and agree not to enable third parties to, analyze, copy, reverse engineer or otherwise attempt to determine the structure or sequence of the product.



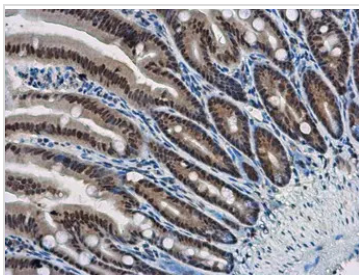
For full product information, images and publications, please visit our [website](#).

DATA IMAGES



GTX213110-01 WB Image

Various whole cell extracts were separated by 10% SDS-PAGE, and the membrane was blotted with Rabbit IgG antibody (HRP) (GTX213110-01) diluted at 1:10000.



GTX213110-01 IHC-P Image

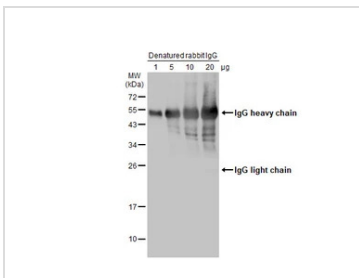
WBP11 antibody detects WBP11 protein at nucleus in mouse intestine by immunohistochemical analysis.

Sample: Paraffin-embedded mouse intestine.

WBP11 antibody (GTX118654) diluted at 1:500.

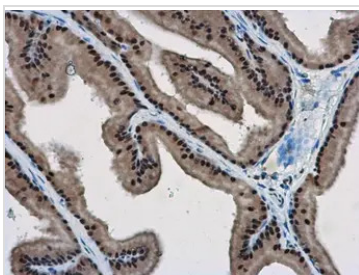
The signal was developed by Rabbit IgG antibody (HRP) (GTX213110-01)

Antigen Retrieval: Citrate buffer, pH 6.0, 15 min



GTX213110-01 WB Image

Various amounts of denatured rabbit IgG protein were separated by 12% SDS-PAGE, and the membrane was blotted with HRP-conjugated anti-rabbit IgG antibody (GTX213110-01) diluted at 1:5000.



GTX213110-01 IHC-P Image

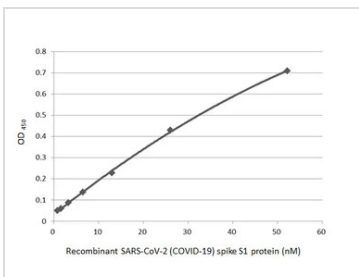
WBP11 antibody detects WBP11 protein at nucleus in rat prostate by immunohistochemical analysis.

Sample: Paraffin-embedded rat prostate.

WBP11 antibody (GTX118654) diluted at 1:500.

The signal was developed by Rabbit IgG antibody (HRP) (GTX213110-01).

Antigen Retrieval: Citrate buffer, pH 6.0, 15 min



GTX213110-01 ELISA Image

Indirect ELISA analysis performed by coating plate with recombinant SARS-CoV-2 (COVID-19) Spike S1 protein, His tag (active) (GTX135817-pro) (52.15-0.81 nM). Coated protein was probed with SARS-CoV-2 (COVID-19) Spike S1 antibody [HL134] (GTX635671) (1 µg/mL). Goat anti-rabbit IgG antibody (HRP) (GTX213110-01) (1:10000) was used to detect bound primary antibody.



For full product information, images and publications, please visit our [website](https://www.genetex.com).