

GTX300093

Methyl-Histone H3 Antibody Panel

Product Content

Cat No	Product Name	Reactivity	Applications	Package
GTX121184	Histone H3K27me3 (Tri-methyl Lys27) antibody	Human, Mouse, Rat, Zebrafish	WB, ICC/IF, IHC-P, IHC-Fr, IHC-Wm, Dot, EM	25 µl
GTX121915	Histone H3K4me2 (Di-methyl Lys4) antibody	Human	WB, ICC/IF, IHC-P, IP, ChIP assay	25 µl
GTX122148	Histone H3 antibody	Human, Mouse, Rat, Drosophila, Pig, Monkey, Fungi, Golden Syrian Hamster, Rice	WB, ICC/IF, IHC-P, IP, ChIP assay, IHC	25 µl
GTX213110-01	Goat Anti-Rabbit IgG antibody (HRP)	Rabbit	WB, IHC-P, ELISA	25 µl
GTX638127	Histone H3K9me3 (Tri-methyl Lys9) antibody [HL2149]	Human	WB, ICC/IF, Dot	25 µl

Note

For In vitro laboratory use only. Not for any clinical, therapeutic, or diagnostic use in humans or animals. Not for animal or human consumption.



For full product information, images and publications, please visit our [website](#).

Histone H3K27me3 (Tri-methyl Lys27) antibody

Cat. No. GTX121184

Host	Rabbit
Clonality	Polyclonal
Isotype	IgG
Applications	WB, ICC/IF, IHC-P, IHC-Fr, IHC-Wm, Dot, EM
Reactivity	Human, Mouse, Rat, Zebrafish

References (14)

★★★★☆ Review (3)

Package

100 µl, 25 µl

Applications

Application Note

*Optimal dilutions/concentrations should be determined by the researcher.

Suggested dilution	Recommended dilution
WB	1:500-1:3000
ICC/IF	1:100-1:1000
IHC-P	1:100-1:1000
IHC-Fr	1:100-1:1000
IHC-Wm	1:100-1:500
Dot	Assay dependent
EM	Assay dependent

Not tested in other applications.

Properties

Form	Liquid
Buffer	PBS, 1% BSA, 20% Glycerol
Preservative	0.025% ProClin 300
Storage	Store as concentrated solution. Centrifuge briefly prior to opening vial. For short-term storage (1-2 weeks), store at 4°C. For long-term storage, aliquot and store at -20°C or below. Avoid multiple freeze-thaw cycles.
Concentration	0.21 mg/ml (Please refer to the vial label for the specific concentration.)
Immunogen	Carrier-protein conjugated synthetic peptide surrounding tri-methyl Lys27 of human Histone H3. The exact sequence is proprietary.
Purification	Purified by antigen-affinity chromatography.
Conjugation	Unconjugated

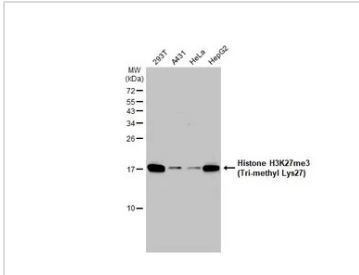


For full product information, images and publications, please visit our [website](#).

For laboratory research use only. Not for any clinical, therapeutic, or diagnostic use in humans or animals. Not for animal or human consumption.

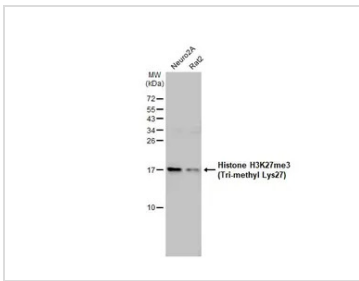
Note
 Purchasers shall not, and agree not to enable third parties to, analyze, copy, reverse engineer or otherwise attempt to determine the structure or sequence of the product.

DATA IMAGES



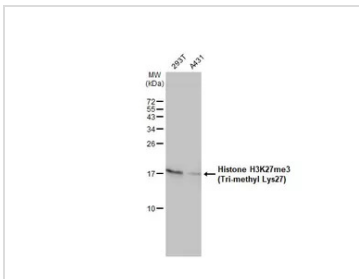
GTX121184 WB Image

Various whole cell extracts (30 µg) were separated by 15% SDS-PAGE, and the membrane was blotted with Histone H3K27me3 (Tri-methyl Lys27) antibody (GTX121184) diluted at 1:1000. The HRP-conjugated anti-rabbit IgG antibody (GTX213110-01) was used to detect the primary antibody, and the signal was developed with Trident ECL plus-Enhanced.



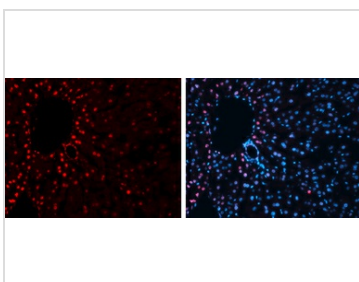
GTX121184 WB Image

Various whole cell extracts (30 µg) were separated by 15% SDS-PAGE, and the membrane was blotted with Histone H3K27me3 (Tri-methyl Lys27) antibody (GTX121184) diluted at 1:1000. The HRP-conjugated anti-rabbit IgG antibody (GTX213110-01) was used to detect the primary antibody, and the signal was developed with Trident ECL plus-Enhanced.



GTX121184 WB Image

Various whole cell extracts (30 µg) were separated by 15% SDS-PAGE, and the membrane was blotted with Histone H3K27me3 (Tri-methyl Lys27) antibody (GTX121184) diluted at 1:1000. The HRP-conjugated anti-rabbit IgG antibody (GTX213110-01) was used to detect the primary antibody.



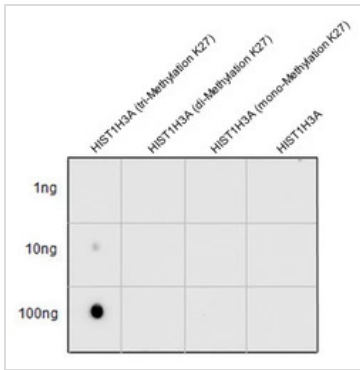
GTX121184 IHC-Fr Image

Immunofluorescence photomicrographs of frozen sections of mouse liver.
 Red: Histone H3K27me3 (trimethyl Lys27) antibody (GTX121184) diluted at 1:200. The signal was developed using goat anti-rabbit IgG antibody (Dylight594) (GTX213110-05).
 Blue: Nuclear staining with Hoechst 33342.

Antigen Retrieval: Trilogy™ (EDTA based, pH 8.0) buffer, 15min

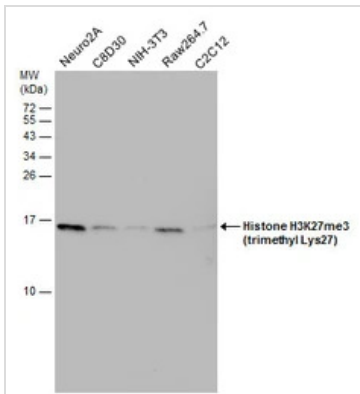


For full product information, images and publications, please visit our [website](#).



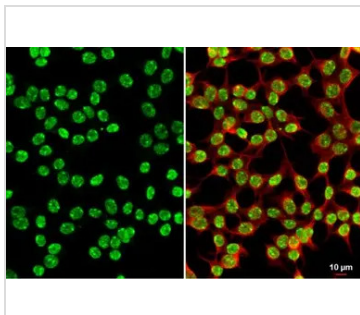
GTX121184 Dot Image

Various peptide samples were spotted onto positively charged nylon membrane, and blotted with Histone H3 (tri-Methyl Lys27) antibody (GTX121184) diluted at 1:2500.



GTX121184 WB Image

Various whole cell extracts (30 µg) were separated by 15% SDS-PAGE, and the membrane was blotted with Histone H3K27me3 (trimethyl Lys27) antibody (GTX121184) diluted at 1:1000.



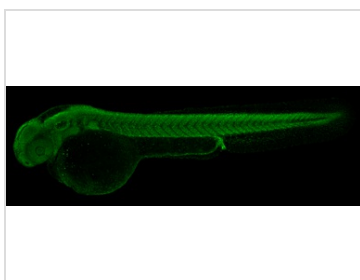
GTX121184 ICC/IF Image

Histone H3K27me3 (Tri-methyl Lys27) antibody detects Histone H3K27me3 (Tri-methyl Lys27) protein at nucleus by immunofluorescent analysis.

Sample: 293T cells were fixed in 4% paraformaldehyde at RT for 15 min.

Green: Histone H3K27me3 (Tri-methyl Lys27) stained by Histone H3K27me3 (Tri-methyl Lys27) antibody (GTX121184) diluted at 1:500.

Red: alpha Tubulin, a cytoskeleton marker, stained by alpha Tubulin antibody [GT114] (GTX628802) diluted at 1:1000.



GTX121184 IHC-Wm Image

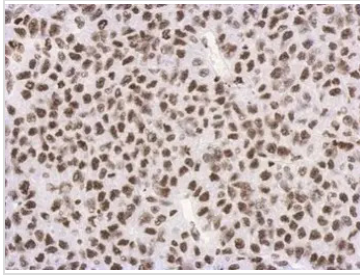
Histone H3K27me3 (trimethyl Lys27) antibody detects Histone H3K27me3 (trimethyl Lys27) protein on zebrafish by whole mount immunohistochemical analysis.

Sample: Paraformaldehyde-fixed 2 day-post-fertilization zebrafish embryo.

Histone H3K27me3 (trimethyl Lys27) antibody (GTX121184) dilution: 1:100.



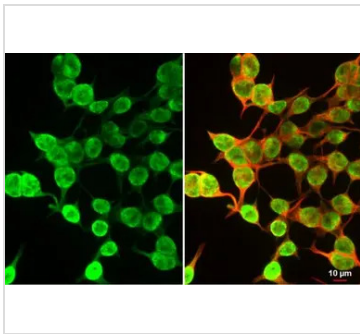
For full product information, images and publications, please visit our [website](http://www.genetex.com).



GTX121184 IHC-P Image

Immunohistochemical analysis of paraffin-embedded Hela xenograft, using Histone H3 (tri-Methyl K27) (GTX121184) antibody at 1:500 dilution.

Antigen Retrieval: Trilogy™ (EDTA based, pH 8.0) buffer, 15min



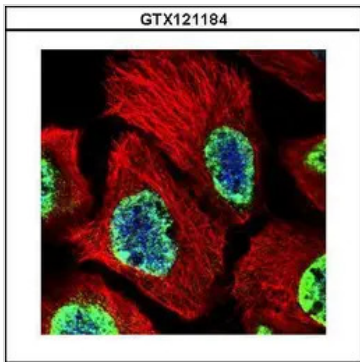
GTX121184 ICC/IF Image

Histone H3K27me3 (Tri-methyl Lys27) antibody detects Histone H3K27me3 (Tri-methyl Lys27) protein at nucleus by immunofluorescent analysis.

Sample: 293T cells were fixed in 4% paraformaldehyde at RT for 15 min.

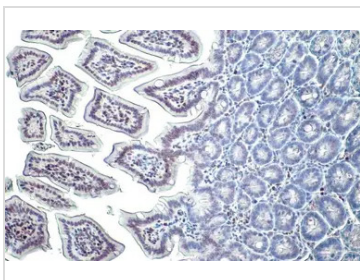
Green: Histone H3K27me3 (Tri-methyl Lys27) stained by Histone H3K27me3 (Tri-methyl Lys27) antibody (GTX121184) diluted at 1:500.

Red: alpha Tubulin, a cytoskeleton marker, stained by alpha Tubulin antibody [GT114] (GTX628802) diluted at 1:1000.



GTX121184 ICC/IF Image

Confocal immunofluorescence analysis (Olympus FV10i) of paraformaldehyde-fixed A431, using Histone H3 (tri-Methyl K27)(GTX121184) antibody (Green) at 1:500 dilution. Alpha-tubulin filaments were labeled with GTX11304 (Red) at 1:2000.



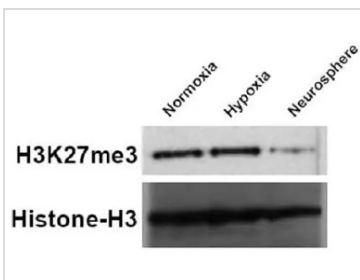
GTX121184 IHC-P Image

Histone H3K27me3 (Tri-methyl Lys27) antibody detects Histone H3K27me3 (Tri-methyl Lys27) protein at nucleus by immunohistochemical analysis.

Sample: Paraffin-embedded mouse intestine.

Histone H3K27me3 (Tri-methyl Lys27) stained by Histone H3K27me3 (Tri-methyl Lys27) antibody (GTX121184) diluted at 1:500.

Antigen Retrieval: Citrate buffer, pH 6.0, 15 min



GTX121184 WB Image

U87 cells were grown under normoxic (DMEM 10% FBS, 16% O₂), hypoxic (DMEM 10% FBS, 1% O₂), and neurosphere conditions (DMEM/F12, B-27 supplement, growth factor (10ng/ml FGF and 20ng/ml EGF)).

Cell lysate were Western blotted for H3K27me3 and Histone-H3 (loading control). The HRP-conjugated anti-rabbit IgG antibody (GTX213110-01) was used to detect the primary antibody.



For full product information, images and publications, please visit our [website](#).

Histone H3K4me2 (Di-methyl Lys4) antibody

Cat. No. GTX121915

Host	Rabbit
Clonality	Polyclonal
Isotype	IgG
Applications	WB, ICC/IF, IHC-P, IP, ChIP assay
Reactivity	Human

References (5)

Package

100 µl, 25 µl

Applications

Application Note

*Optimal dilutions/concentrations should be determined by the researcher.

Suggested dilution	Recommended dilution
WB	1:1000-1:10000
ICC/IF	1:100-1:1000
IHC-P	1:100-1:1000
IP	1:500-1:1000
ChIP assay	Assay dependent

Not tested in other applications.

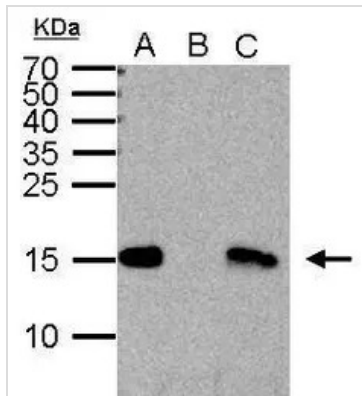
Properties

Form	Liquid
Buffer	PBS, 1% BSA, 20% Glycerol
Preservative	0.025% ProClin 300
Storage	Store as concentrated solution. Centrifuge briefly prior to opening vial. For short-term storage (1-2 weeks), store at 4°C. For long-term storage, aliquot and store at -20°C or below. Avoid multiple freeze-thaw cycles.
Concentration	0.1 mg/ml (Please refer to the vial label for the specific concentration.)
Immunogen	Carrier-protein conjugated synthetic peptide surrounding di-methyl Lys4 of human Histone H3. The exact sequence is proprietary.
Purification	Purified by antigen-affinity chromatography.
Conjugation	Unconjugated
Note	For laboratory research use only. Not for any clinical, therapeutic, or diagnostic use in humans or animals. Not for animal or human consumption. Purchasers shall not, and agree not to enable third parties to, analyze, copy, reverse engineer or otherwise attempt to determine the structure or sequence of the product.

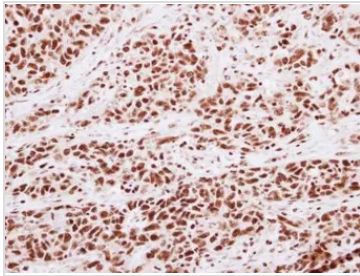


For full product information, images and publications, please visit our [website](#).

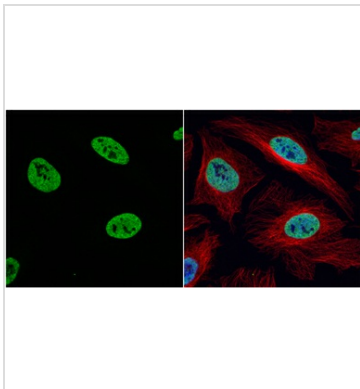
DATA IMAGES

**GTX121915 IP Image**

Histone H3 (di-methyl Lys4) antibody immunoprecipitates Histone H3 (di-methyl Lys4) protein in IP experiments. IP Sample: 1000 µg HeLa whole cell lysate/extract A. 50 µg HeLa whole cell lysate/extract B. Control with 2 µg of preimmune rabbit IgG C. Immunoprecipitation of Histone H3 (di-methyl Lys4) protein by 2 µg of Histone H3 (di-methyl Lys4) antibody (GTX121915) 15% SDS-PAGE The immunoprecipitated Histone H3 (di-methyl Lys4) protein was detected by Histone H3 (di-methyl Lys4) antibody (GTX121915) diluted at 1:1000. EasyBlot anti-rabbit IgG (GTX221666-01) was used as a secondary reagent.

**GTX121915 IHC-P Image**

Immunohistochemical analysis of paraffin-embedded human lung adenocarcinoma, using Histone H3 (di-Methyl K4)(GTX121915) antibody at 1:250 dilution.
Antigen Retrieval: Trilogy™ (EDTA based, pH 8.0) buffer, 15min

**GTX121915 ICC/IF Image**

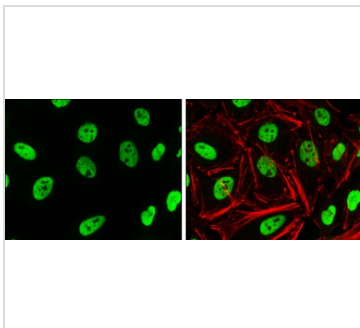
Histone H3K4me2 (dimethyl Lys4) antibody detects Histone H3K4me2 (dimethyl Lys4) protein at nucleus by immunofluorescent analysis.

Sample: HeLa cells were fixed in 4% paraformaldehyde at RT for 15 min.

Green: Histone H3K4me2 (dimethyl Lys4) protein stained by Histone H3K4me2 (dimethyl Lys4) antibody (GTX121915) diluted at 1:1000.

Red: alpha Tubulin, a cytoskeleton marker, stained by alpha Tubulin antibody [GT114] (GTX628802) diluted at 1:1000.

Blue: Hoechst 33342 staining.

**GTX121915 ICC/IF Image**

Histone H3K4me2 (dimethyl Lys4) antibody detects Histone H3K4me2 (dimethyl Lys4) protein at nucleus by immunofluorescent analysis.

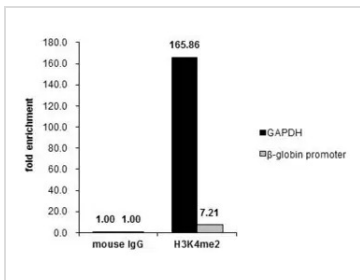
Sample: HeLa cells were fixed in 4% paraformaldehyde at RT for 15 min.

Green: Histone H3K4me2 (dimethyl Lys4) protein stained by Histone H3K4me2 (dimethyl Lys4) antibody (GTX121915) diluted at 1:1000.

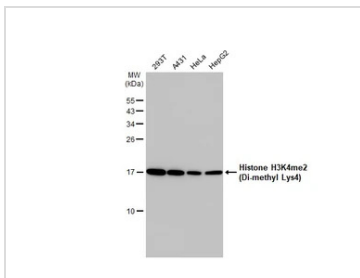
Red: phalloidin, a cytoskeleton marker, diluted at 1:50.



For full product information, images and publications, please visit our [website](#).


GTX121915 ChIP assay Image

Cross-linked ChIP was performed with HeLa chromatin extract and 5 μg of either control rabbit IgG or anti-Histone H3K4me2 (dimethyl Lys4) antibody. The precipitated DNA was detected by PCR with primer set targeting to GAPDH or β-globin promoter.


GTX121915 WB Image

Various whole cell extracts (30 μg) were separated by 15% SDS-PAGE, and the membrane was blotted with Histone H3K4me2 (Di-methyl Lys4) antibody (GTX121915) diluted at 1:2500. The HRP-conjugated anti-rabbit IgG antibody (GTX213110-01) was used to detect the primary antibody.



For full product information, images and publications, please visit our [website](#).

Histone H3 antibody

Cat. No. GTX122148

Host	Rabbit
Clonality	Polyclonal
Isotype	IgG
Applications	WB, ICC/IF, IHC-P, IP, ChIP assay, IHC
Reactivity	Human, Mouse, Rat, Drosophila, Pig, Monkey, Fungi, Golden Syrian Hamster, Rice

References (84)

★★★★☆ Review (10)

Package

100 µl, 25 µl

PRODUCT

Summary

Histone H3 antibody detects histone H3, a core component of the histone octamer in the context of the nucleosome. Like other histones, H3 is posttranslationally modified to impact epigenetic gene regulation. It is also highly conserved in eukaryotes, and therefore is used as an internal control for western blots or as a nuclear marker when conducting immunostaining.

Applications

Application Note

*Optimal dilutions/concentrations should be determined by the researcher.

Suggested dilution	Recommended dilution
WB	1:500-1:10000
ICC/IF	1:100-1:1000
IHC-P	1:100-1:1000
IP	1:100-1:500
ChIP assay	Assay dependent
IHC	Assay dependent

Not tested in other applications.

Product Note

KO/KD validation is based on published data (PMID: 35434046).

Properties

Form	Liquid
Buffer	PBS, 20% Glycerol
Preservative	0.025% ProClin 300
Storage	Store as concentrated solution. Centrifuge briefly prior to opening vial. For short-term storage (1-2 weeks), store at 4°C. For long-term storage, aliquot and store at -20°C or below. Avoid multiple freeze-thaw cycles.
Concentration	0.82 mg/ml (Please refer to the vial label for the specific concentration.)

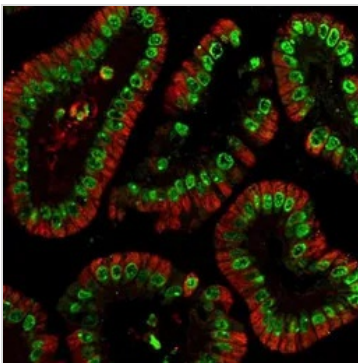


For full product information, images and publications, please visit our [website](#).

Date 2026 / 04 / 03 Page 9 of 19

Immunogen	Carrier-protein conjugated synthetic peptide encompassing a sequence within the N-terminus region of human Histone H3. The exact sequence is proprietary.
Purification	Purified by antigen-affinity chromatography.
Conjugation	Unconjugated
Note	For laboratory research use only. Not for any clinical, therapeutic, or diagnostic use in humans or animals. Not for animal or human consumption. Purchasers shall not, and agree not to enable third parties to, analyze, copy, reverse engineer or otherwise attempt to determine the structure or sequence of the product.

DATA IMAGES



GTX122148 IHC-P Image

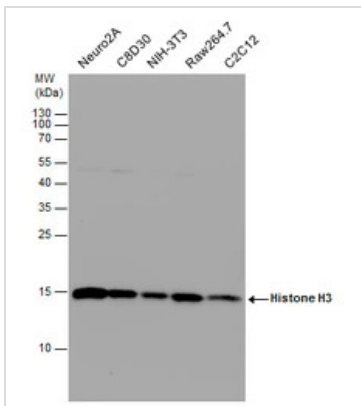
Histone H3 antibody detects Histone H3 protein at nucleus in mouse colon by immunohistochemical analysis.

Sample: Paraffin-embedded mouse colon.

Green: Histone H3 antibody (GTX122148) diluted at 1:500.

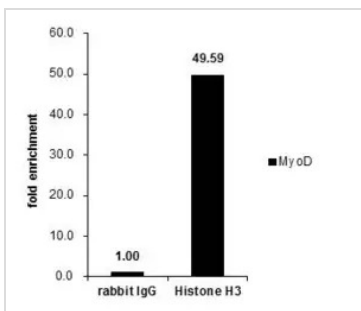
Red: alpha Tubulin antibody [GT114] (GTX628802) diluted at 1:500.

Antigen Retrieval: Citrate buffer, pH 6.0, 15 min



GTX122148 WB Image

Histone H3 antibody detects Histone H3 protein by western blot analysis. Various whole cell extracts (30 µg) were separated by 15% SDS-PAGE, and the membrane was blotted with Histone H3 antibody (GTX122148) diluted at a dilution of 1:10000. The HRP-conjugated anti-rabbit IgG antibody (GTX213110-01) was used to detect the primary antibody.

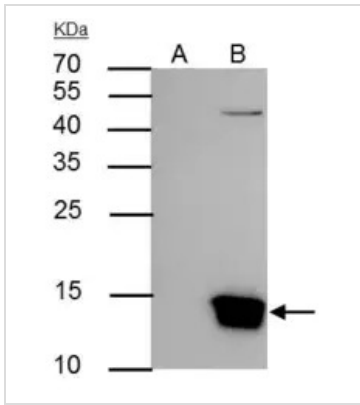


GTX122148 ChIP assay Image

Cross-linked ChIP was performed with HeLa chromatin extract and 5 µg of either control rabbit IgG or anti-Histone H3 antibody. The precipitated DNA was detected by PCR with primer set targeting to MyoD.

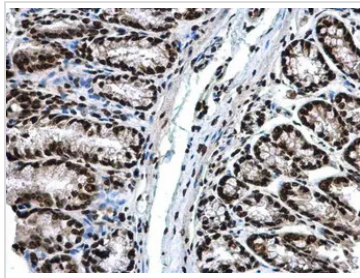


For full product information, images and publications, please visit our [website](#).



GTX122148 IP Image

Histone H3 antibody immunoprecipitates Histone H3 protein in IP experiments. IP Sample: Raji whole cell lysate/extract A : Control with 3 µg of pre-immune rabbit IgG B : Immunoprecipitation of Histone H3 by 3 µg of Histone H3 antibody (GTX122148) 15% SDS-PAGE The immunoprecipitated Histone H3 protein was detected by Histone H3 antibody (GTX122148) diluted at 1:5000. EasyBlot anti-rabbit IgG (HRP) (GTX221666-01) was used as a secondary reagent.



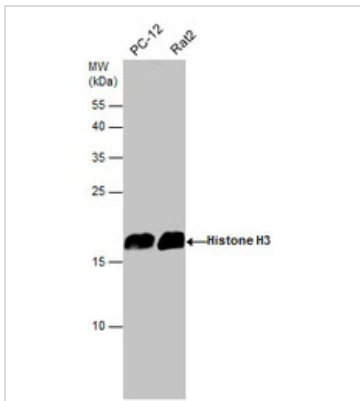
GTX122148 IHC-P Image

Histone H3 antibody detects Histone H3 protein at nucleus in mouse colon by immunohistochemical analysis.

Sample: Paraffin-embedded mouse colon.

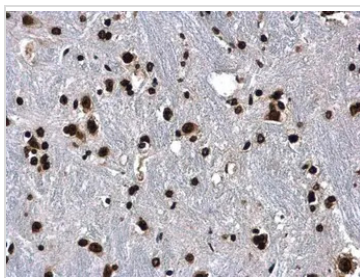
Histone H3 antibody (GTX122148) diluted at 1:500.

Antigen Retrieval: Citrate buffer, pH 6.0, 15 min



GTX122148 WB Image

Various whole cell extracts (30 µg) were separated by 15% SDS-PAGE, and the membrane was blotted with Histone H3 antibody (GTX122148) diluted at 1:3000. The HRP-conjugated anti-rabbit IgG antibody (GTX213110-01) was used to detect the primary antibody.



GTX122148 IHC-P Image

Histone H3 antibody detects Histone H3 protein at nucleus in mouse brain by immunohistochemical analysis.

Sample: Paraffin-embedded mouse brain.

Histone H3 antibody (GTX122148) diluted at 1:500.

Antigen Retrieval: Citrate buffer, pH 6.0, 15 min

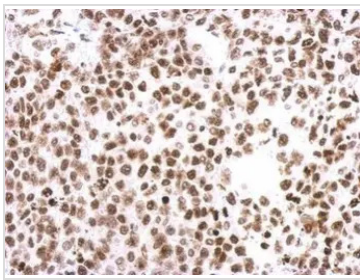


For full product information, images and publications, please visit our [website](#).



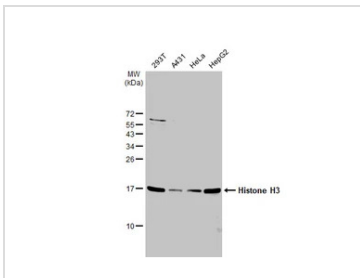
GTX122148 ICC/IF Image

Histone H3 antibody detects Histone H3 protein at nucleus by immunofluorescent analysis.
 Sample: A431 cells were fixed in ice-cold MeOH for 5 min.
 Green: Histone H3 protein stained by Histone H3 antibody (GTX122148) diluted at 1:500.
 Blue: Hoechst 33342 staining.



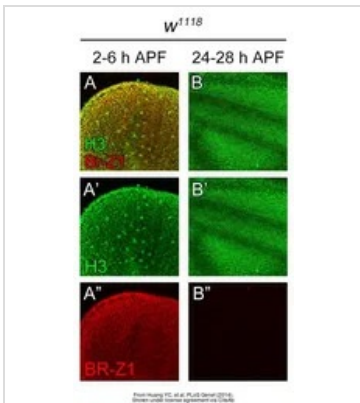
GTX122148 IHC-P Image

Immunohistochemical analysis of paraffin-embedded Hela xenograft, using Histone H3(GTX122148) antibody at 1:500 dilution.
 Antigen Retrieval: Trilogy™ (EDTA based, pH 8.0) buffer, 15min



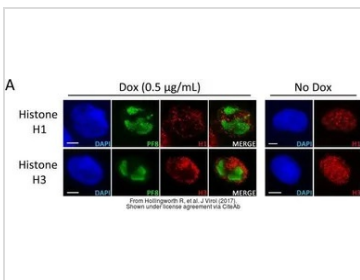
GTX122148 WB Image

Various whole cell extracts (30 µg) were separated by 15% SDS-PAGE, and the membrane was blotted with Histone H3 antibody (GTX122148) diluted at 1:1000. The HRP-conjugated anti-rabbit IgG antibody (GTX213110-01) was used to detect the primary antibody.



GTX122148 IHC Image

The data was published in the journal PLoS Genet in 2014. [PMID: 25393278](https://pubmed.ncbi.nlm.nih.gov/25393278/)



GTX122148 ICC/IF Image

The data was published in the journal J Virol in 2017. [PMID: 28855246](https://pubmed.ncbi.nlm.nih.gov/28855246/)



For full product information, images and publications, please visit our [website](http://www.genetex.com).

Goat Anti-Rabbit IgG antibody (HRP)

Cat. No. GTX213110-01

Host	Goat
Clonality	Polyclonal
Isotype	IgG
Applications	WB, IHC-P, ELISA
Reactivity	Rabbit

References (631)

Package

1 ml

Applications

Application Note

*Optimal dilutions/concentrations should be determined by the researcher.

Suggested dilution	Recommended dilution
WB	1:5000-1:20000
IHC-P	1:100-1:1000
ELISA	1:5000-1:20000

Not tested in other applications.

Properties

Form	Liquid
Buffer	0.05M Tris, 0.15M NaCl
Preservative	0.025% ProClin 300
Storage	Store as concentrated solution. Centrifuge briefly prior to opening vial. For short-term storage (1-2 weeks), store at 4°C. For long-term storage, aliquot and store at -20°C or below. Avoid multiple freeze-thaw cycles.
Concentration	0.2 mg/ml (Please refer to the vial label for the specific concentration.)
Immunogen	Highly purified whole rabbit IgG
Purification	Purified by antigen-affinity chromatography.
Conjugation	Horseradish peroxidase(HRP)

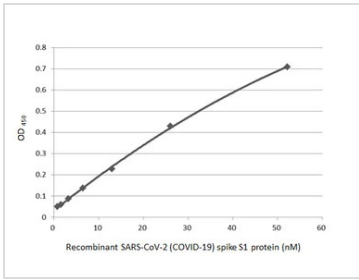
Note

For laboratory research use only. Not for any clinical, therapeutic, or diagnostic use in humans or animals. Not for animal or human consumption.

Purchasers shall not, and agree not to enable third parties to, analyze, copy, reverse engineer or otherwise attempt to determine the structure or sequence of the product.

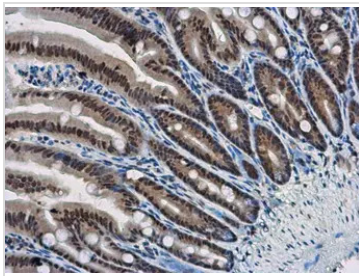
For full product information, images and publications, please visit our [website](#).

DATA IMAGES



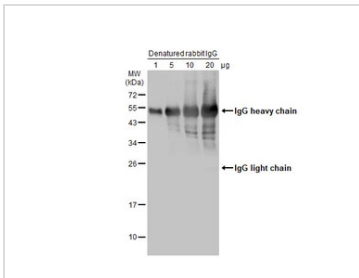
GTX213110-01 ELISA Image

Indirect ELISA analysis performed by coating plate with recombinant SARS-CoV-2 (COVID-19) Spike S1 protein, His tag (active) (GTX135817-pro) (52.15-0.81 nM). Coated protein was probed with SARS-CoV-2 (COVID-19) Spike S1 antibody [HL134] (GTX635671) (1 µg/mL). Goat anti-rabbit IgG antibody (HRP) (GTX213110-01) (1:10000) was used to detect bound primary antibody.



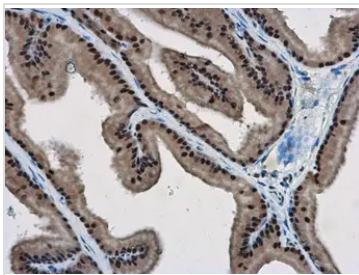
GTX213110-01 IHC-P Image

WBP11 antibody detects WBP11 protein at nucleus in mouse intestine by immunohistochemical analysis. Sample: Paraffin-embedded mouse intestine. WBP11 antibody (GTX118654) diluted at 1:500. The signal was developed by Rabbit IgG antibody (HRP) (GTX213110-01) Antigen Retrieval: Citrate buffer, pH 6.0, 15 min



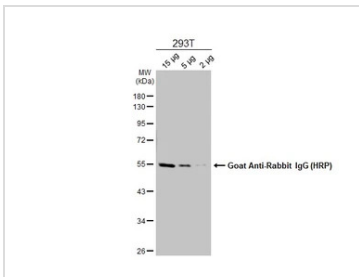
GTX213110-01 WB Image

Various amounts of denatured rabbit IgG protein were separated by 12% SDS-PAGE, and the membrane was blotted with HRP-conjugated anti-rabbit IgG antibody (GTX213110-01) diluted at 1:5000.



GTX213110-01 IHC-P Image

WBP11 antibody detects WBP11 protein at nucleus in rat prostate by immunohistochemical analysis. Sample: Paraffin-embedded rat prostate. WBP11 antibody (GTX118654) diluted at 1:500. The signal was developed by Rabbit IgG antibody (HRP) (GTX213110-01). Antigen Retrieval: Citrate buffer, pH 6.0, 15 min

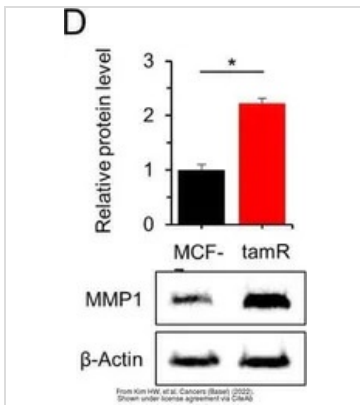


GTX213110-01 WB Image

Various whole cell extracts were separated by 10% SDS-PAGE, and the membrane was blotted with alpha Tubulin antibody (GTX112141) diluted at 1:10000. The HRP-conjugated anti-rabbit IgG antibody (GTX213110-01) was used to detect the primary antibody.

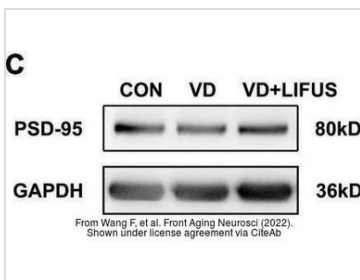


For full product information, images and publications, please visit our [website](#).



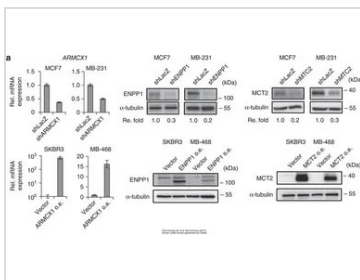
GTx213110-01 WB Image

The data was published in the 2022 in Cancers (Basel). [PMID: 35267540](https://pubmed.ncbi.nlm.nih.gov/35267540/)



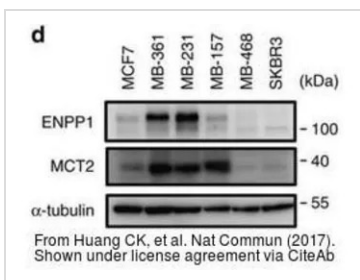
GTx213110-01 WB Image

The data was published in the 2022 in Front Aging Neurosci. [PMID: 35264943](https://pubmed.ncbi.nlm.nih.gov/35264943/)



GTx213110-01 WB Image

The data was published in the 2017 in Nat Commun. [PMID: 28281525](https://pubmed.ncbi.nlm.nih.gov/28281525/)

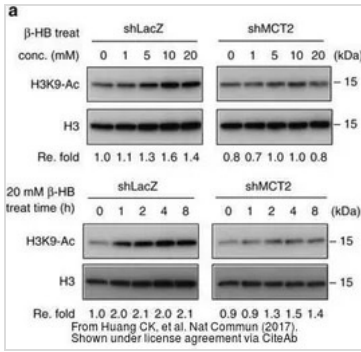


GTx213110-01 WB Image

The data was published in the 2017 in Nat Commun. [PMID: 28281525](https://pubmed.ncbi.nlm.nih.gov/28281525/)

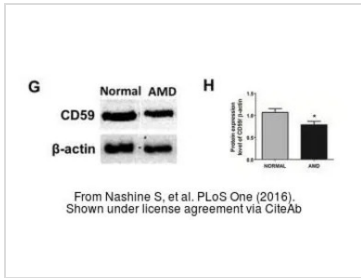


For full product information, images and publications, please visit our [website](https://www.genetex.com).



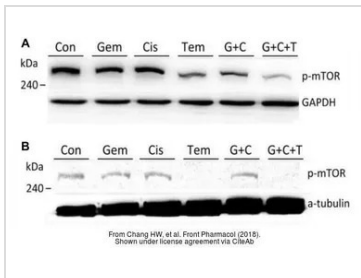
GTx213110-01 WB Image

The data was published in the 2017 in Nat Commun. [PMID: 28281525](https://pubmed.ncbi.nlm.nih.gov/28281525/)



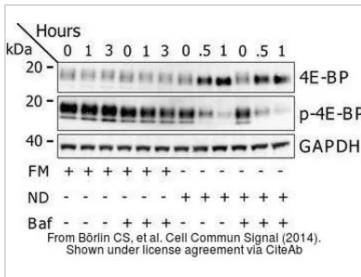
GTx213110-01 WB Image

The data was published in the 2016 in PLoS One. [PMID: 27486856](https://pubmed.ncbi.nlm.nih.gov/27486856/)



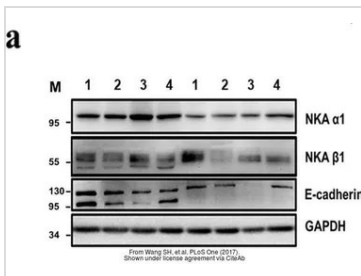
GTx213110-01 WB Image

The data was published in the journal Front Pharmacol in 2018. [PMID: 30087612](https://pubmed.ncbi.nlm.nih.gov/30087612/)



GTx213110-01 WB Image

The data was published in the journal Cell Commun Signal in 2014. [PMID: 25214434](https://pubmed.ncbi.nlm.nih.gov/25214434/)

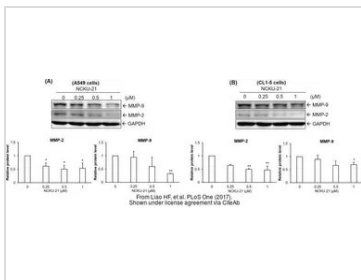


GTx213110-01 WB Image

The data was published in the journal PLoS One in 2017. [PMID: 28832634](https://pubmed.ncbi.nlm.nih.gov/28832634/)

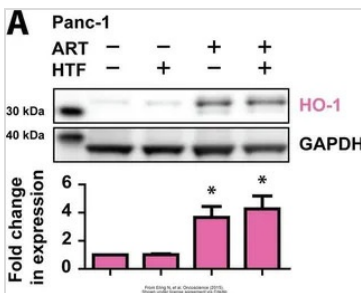


For full product information, images and publications, please visit our [website](http://www.genetex.com).



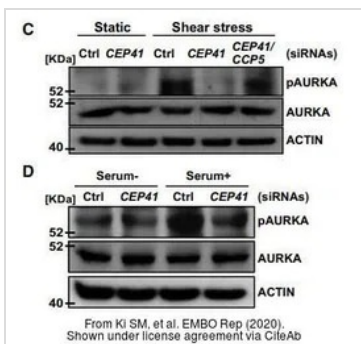
GTX213110-01 WB Image

The data was published in the journal PLoS One in 2017. [PMID: 28945763](#)



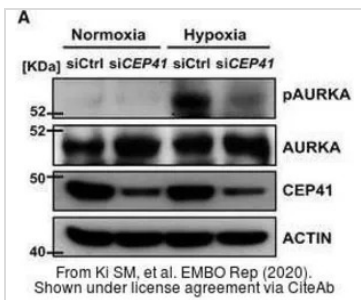
GTX213110-01 WB Image

The data was published in the journal Oncoscience in 2015. [PMID: 26097885](#)



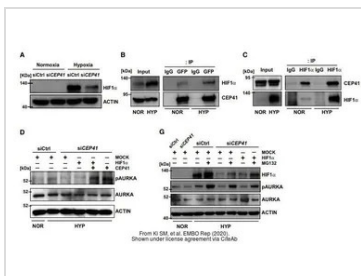
GTX213110-01 WB Image

The data was published in the journal EMBO Rep in 2020. [PMID: 31885126](#)



GTX213110-01 WB Image

The data was published in the journal EMBO Rep in 2020. [PMID: 31885126](#)



GTX213110-01 WB Image

The data was published in the journal EMBO Rep in 2020. [PMID: 31885126](#)



For full product information, images and publications, please visit our [website](#).

Histone H3K9me3 (Tri-methyl Lys9) antibody [HL2149]

Cat. No. GTX638127

Host	Rabbit
Clonality	Monoclonal
Isotype	IgG
Applications	WB, ICC/IF, Dot
Reactivity	Human

Package
100 µl, 25 µl

Applications

Application Note

*Optimal dilutions/concentrations should be determined by the researcher.

Suggested dilution

Suggested dilution	Recommended dilution
WB	1:500-1:3000
ICC/IF	Assay dependent
Dot	Assay dependent

Not tested in other applications.

Observed MW (kDa) 17 kDa.

Properties

Form	Liquid
Buffer	PBS
Preservative	No preservatives
Storage	Store as concentrated solution. Centrifuge briefly prior to opening vial. For short-term storage (1-2 weeks), store at 4°C. For long-term storage, aliquot and store at -20°C or below. Avoid multiple freeze-thaw cycles.
Concentration	1 mg/ml (Please refer to the vial label for the specific concentration.)
Immunogen	Carrier-protein conjugated synthetic peptide surrounding tri-methyl Lys9 of human Histone H3. The exact sequence is proprietary.
Purification	Affinity purified by Protein A.
Conjugation	Unconjugated

Note

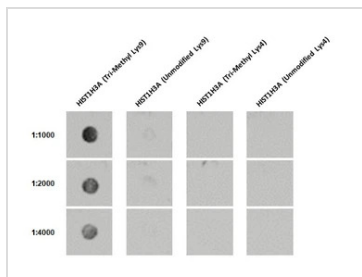
For laboratory research use only. Not for any clinical, therapeutic, or diagnostic use in humans or animals. Not for animal or human consumption.

Purchasers shall not, and agree not to enable third parties to, analyze, copy, reverse engineer or otherwise attempt to determine the structure or sequence of the product.



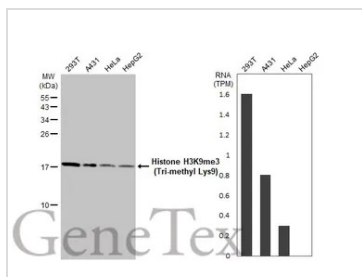
For full product information, images and publications, please visit our [website](#).

DATA IMAGES



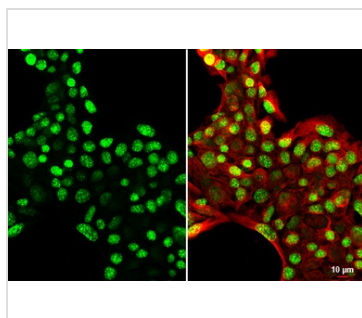
GTX638127 Dot Image

Dot blot analysis of anti-Histone H3K9me3 (Tri-methyl Lys9) antibody [HL2149] with peptide samples. Peptide samples were spotted onto positively charged nylon membrane and blotted with Histone H3K9me3 (Tri-methyl Lys9) antibody [HL2149] (GTX638127) varied dilution.



GTX638127 WB Image

Various whole cell extracts (30 µg) were separated by 15% SDS-PAGE, and the membrane was blotted with Histone H3K9me3 (Tri-methyl Lys9) antibody [HL2149] (GTX638127) diluted at 1:5000. The HRP-conjugated anti-rabbit IgG antibody (GTX213110-01) was used to detect the primary antibody. Corresponding RNA expression data for the same cell lines are based on Human Protein Atlas program.



GTX638127 ICC/IF Image

Histone H3K9me3 (Tri-methyl Lys9) antibody [HL2149] detects Histone H3K9me3 (Tri-methyl Lys9) protein at cytoplasm by immunofluorescent analysis.

Sample: HepG2 cells were fixed in 4% paraformaldehyde at RT for 15 min.

Green: Histone H3K9me3 (Tri-methyl Lys9) stained by Histone H3K9me3 (Tri-methyl Lys9) antibody [HL2149] (GTX638127) diluted at 1:500.

Red: alpha Tubulin, a cytoskeleton marker, stained by alpha Tubulin antibody [GT114] (GTX628802) diluted at 1:1000.



For full product information, images and publications, please visit our [website](http://www.genetex.com).