

GTX300096

EMT Markers Antibody Panel

References (1)

Product Content

Cat No	Product Name	Reactivity	Applications	Package
GTX127310	Twist1/2 antibody	Human, Mouse, Rat, Drosophila	WB, IHC-P, IHC	25 µl
GTX213110-01	Goat Anti-Rabbit IgG antibody (HRP)	Rabbit	WB, IHC-P, ELISA	25 µl
GTX636577	E-Cadherin antibody [HL1229]	Human, Mouse, Rat, Cat, Dog	WB, ICC/IF, IHC-P	25 µl
GTX636980	Vimentin antibody [HL1506]	Human, Mouse, Rat, Cat	WB, ICC/IF, IHC-P	25 µl
GTX639626	Fibronectin antibody [HL2761]	Human	WB, ICC/IF	25 µl

Note

For In vitro laboratory use only. Not for any clinical, therapeutic, or diagnostic use in humans or animals. Not for animal or human consumption.



For full product information, images and publications, please visit our [website](#).

Twist1/2 antibody

Cat. No. GTX127310

Host	Rabbit
Clonality	Polyclonal
Isotype	IgG
Applications	WB, IHC-P, IHC
Reactivity	Human, Mouse, Rat, Drosophila

References (71)

★★★★☆ Review (12)

Package

100 µl, 25 µl

Applications

Application Note

*Optimal dilutions/concentrations should be determined by the researcher.

Suggested dilution	Recommended dilution
WB	1:500-1:10000
IHC-P	1:100-1:1000
IHC	Assay dependent

Not tested in other applications.

Calculated MW 21 kDa. ([Note](#))

Properties

Form	Liquid
Buffer	PBS, 20% Glycerol
Preservative	0.025% ProClin 300
Storage	Store as concentrated solution. Centrifuge briefly prior to opening vial. For short-term storage (1-2 weeks), store at 4°C. For long-term storage, aliquot and store at -20°C or below. Avoid multiple freeze-thaw cycles.
Concentration	0.67 mg/ml (Please refer to the vial label for the specific concentration.)
Immunogen	Recombinant protein encompassing a sequence within the center region of human Twist1/2. The exact sequence is proprietary.
Purification	Purified by antigen-affinity chromatography.
Conjugation	Unconjugated

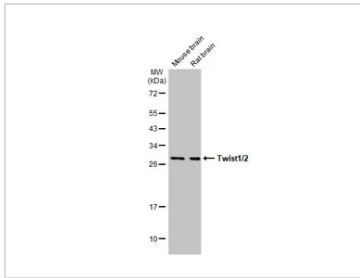
Note

For laboratory research use only. Not for any clinical, therapeutic, or diagnostic use in humans or animals. Not for animal or human consumption.

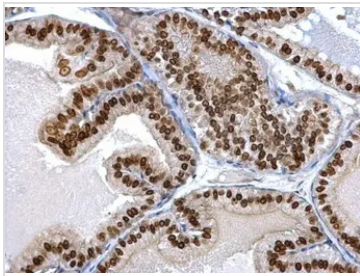
Purchasers shall not, and agree not to enable third parties to, analyze, copy, reverse engineer or otherwise attempt to determine the structure or sequence of the product.

For full product information, images and publications, please visit our [website](#).

DATA IMAGES

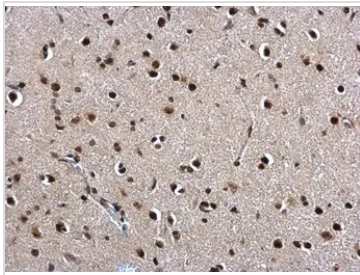
**GTX127310 WB Image**

Various tissue extracts (50 μ g) were separated by 12% SDS-PAGE, and the membrane was blotted with Twist1/2 antibody (GTX127310) diluted at 1:1000. The HRP-conjugated anti-rabbit IgG antibody (GTX213110-01) was used to detect the primary antibody.

**GTX127310 IHC-P Image**

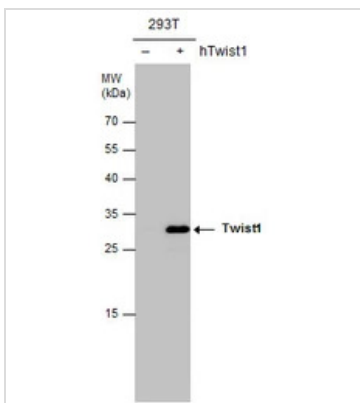
Twist1/2 antibody detects Twist1/2 protein at nucleus on mouse prostate by immunohistochemical analysis.
Sample: Paraffin-embedded mouse prostate.
Twist1/2 antibody (GTX127310) dilution: 1:500.

Antigen Retrieval: Trilogy™ (EDTA based, pH 8.0) buffer, 15min

**GTX127310 IHC-P Image**

Twist1/2 antibody detects Twist1/2 protein at nucleus on rat fore brain by immunohistochemical analysis.
Sample: Paraffin-embedded rat fore brain.
Twist1/2 antibody (GTX127310) dilution: 1:500.

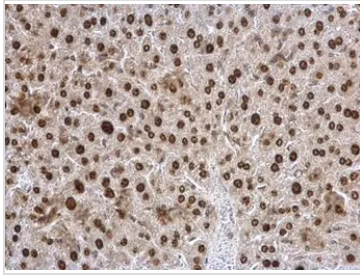
Antigen Retrieval: Trilogy™ (EDTA based, pH 8.0) buffer, 15min

**GTX127310 WB Image**

Twist1/2 antibody detects Twist1 protein by western blot analysis. Non-transfected (-) and Twist1-transfected (+) 293T whole cell extracts (30 μ g) were separated by 12% SDS-PAGE, and the membrane was blotted with Twist1/2 antibody (GTX127310) diluted at 1:5000. The HRP-conjugated anti-rabbit IgG antibody (GTX213110-01) was used to detect the primary antibody.



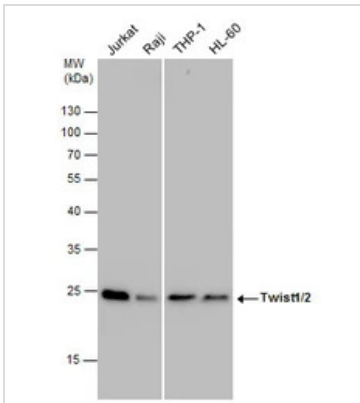
For full product information, images and publications, please visit our [website](#).



GTX127310 IHC-P Image

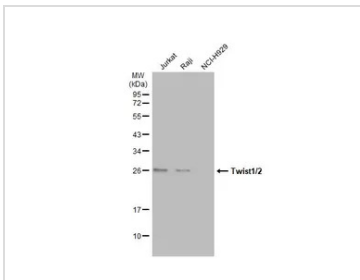
Twist1/2 antibody detects Twist1/2 protein at nucleus on mouse liver by immunohistochemical analysis.
 Sample: Paraffin-embedded mouse liver.
 Twist1/2 antibody (GTX127310) dilution: 1:500.

Antigen Retrieval: Trilogy™ (EDTA based, pH 8.0) buffer, 15min



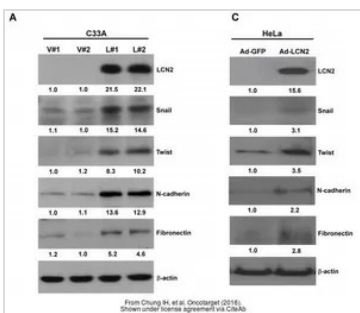
GTX127310 WB Image

Twist1/2 antibody detects Twist1/2 protein by western blot analysis. Various whole cell extracts (30 µg) were separated by 12% SDS-PAGE, and the membrane was blotted with Twist1/2 antibody (GTX127310) diluted at 1:1000. The HRP-conjugated anti-rabbit IgG antibody (GTX213110-01) was used to detect the primary antibody.



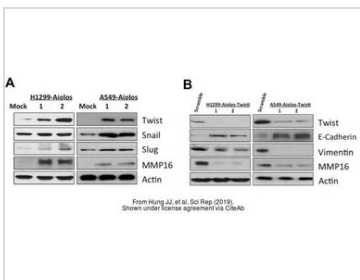
GTX127310 WB Image

Various whole cell extracts (30 µg) were separated by 12% SDS-PAGE, and the membrane was blotted with Twist1/2 antibody (GTX127310) diluted at 1:1000. The HRP-conjugated anti-rabbit IgG antibody (GTX213110-01) was used to detect the primary antibody.



GTX127310 WB Image

The data was published in the journal Oncotarget in 2016. [PMID: 26840566](https://pubmed.ncbi.nlm.nih.gov/26840566/)

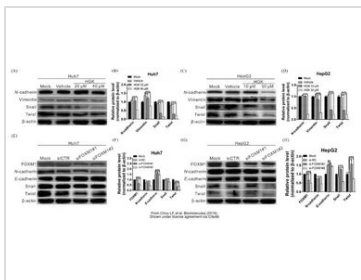


GTX127310 WB Image

The data was published in the journal Sci Rep in 2019. [PMID: 30816208](https://pubmed.ncbi.nlm.nih.gov/30816208/)

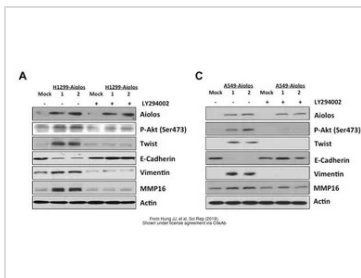


For full product information, images and publications, please visit our [website](https://www.genetex.com).



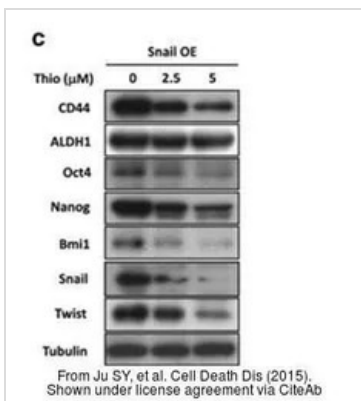
GTX127310 WB Image

The data was published in the journal Biomolecules in 2019. [PMID: 31877715](https://pubmed.ncbi.nlm.nih.gov/31877715/)



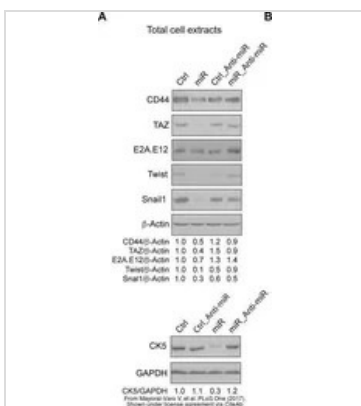
GTX127310 WB Image

The data was published in the journal Sci Rep in 2019. [PMID: 30816208](https://pubmed.ncbi.nlm.nih.gov/30816208/)



GTX127310 WB Image

The data was published in the journal Cell Death Dis in 2015. [PMID: 26136074](https://pubmed.ncbi.nlm.nih.gov/26136074/)

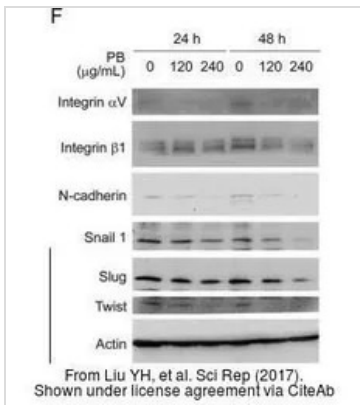


GTX127310 WB Image

The data was published in the journal PLoS One in 2017. [PMID: 29182685](https://pubmed.ncbi.nlm.nih.gov/29182685/)

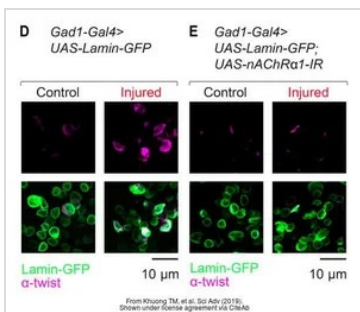


For full product information, images and publications, please visit our [website](https://www.genetex.com).



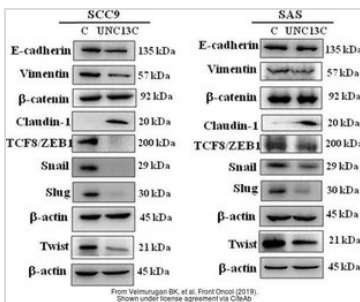
GTX127310 WB Image

The data was published in the journal Sci Rep in 2017. [PMID: 28134285](https://pubmed.ncbi.nlm.nih.gov/28134285/)



GTX127310 IHC Image

The data was published in the journal Sci Adv in 2019. [PMID: 31309148](https://pubmed.ncbi.nlm.nih.gov/31309148/)



GTX127310 WB Image

The data was published in the journal Front Oncol in 2019. [PMID: 31440468](https://pubmed.ncbi.nlm.nih.gov/31440468/)



For full product information, images and publications, please visit our [website](https://www.genetex.com).

Goat Anti-Rabbit IgG antibody (HRP)

Cat. No. GTX213110-01

Host	Goat
Clonality	Polyclonal
Isotype	IgG
Applications	WB, IHC-P, ELISA
Reactivity	Rabbit

References (631)

Package

1 ml

Applications

Application Note

*Optimal dilutions/concentrations should be determined by the researcher.

Suggested dilution	Recommended dilution
WB	1:5000-1:20000
IHC-P	1:100-1:1000
ELISA	1:5000-1:20000

Not tested in other applications.

Properties

Form	Liquid
Buffer	0.05M Tris, 0.15M NaCl
Preservative	0.025% ProClin 300
Storage	Store as concentrated solution. Centrifuge briefly prior to opening vial. For short-term storage (1-2 weeks), store at 4°C. For long-term storage, aliquot and store at -20°C or below. Avoid multiple freeze-thaw cycles.
Concentration	0.2 mg/ml (Please refer to the vial label for the specific concentration.)
Immunogen	Highly purified whole rabbit IgG
Purification	Purified by antigen-affinity chromatography.
Conjugation	Horseradish peroxidase(HRP)

Note

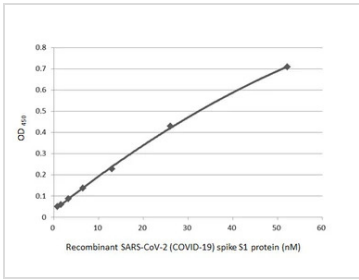
For laboratory research use only. Not for any clinical, therapeutic, or diagnostic use in humans or animals. Not for animal or human consumption.

Purchasers shall not, and agree not to enable third parties to, analyze, copy, reverse engineer or otherwise attempt to determine the structure or sequence of the product.



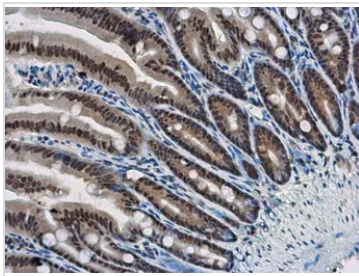
For full product information, images and publications, please visit our [website](#).

DATA IMAGES



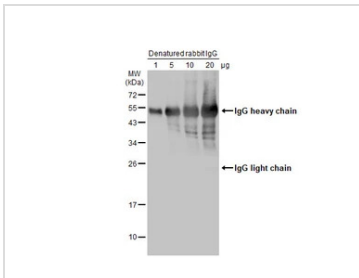
GTX213110-01 ELISA Image

Indirect ELISA analysis performed by coating plate with recombinant SARS-CoV-2 (COVID-19) Spike S1 protein, His tag (active) (GTX135817-pro) (52.15-0.81 nM). Coated protein was probed with SARS-CoV-2 (COVID-19) Spike S1 antibody [HL134] (GTX635671) (1 µg/mL). Goat anti-rabbit IgG antibody (HRP) (GTX213110-01) (1:10000) was used to detect bound primary antibody.



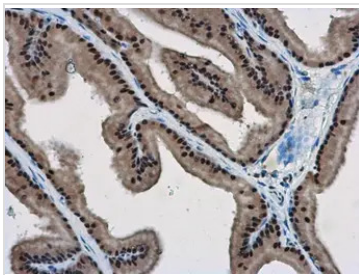
GTX213110-01 IHC-P Image

WBP11 antibody detects WBP11 protein at nucleus in mouse intestine by immunohistochemical analysis. Sample: Paraffin-embedded mouse intestine. WBP11 antibody (GTX118654) diluted at 1:500. The signal was developed by Rabbit IgG antibody (HRP) (GTX213110-01) Antigen Retrieval: Citrate buffer, pH 6.0, 15 min



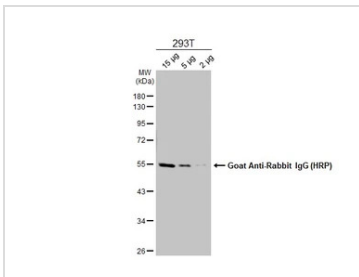
GTX213110-01 WB Image

Various amounts of denatured rabbit IgG protein were separated by 12% SDS-PAGE, and the membrane was blotted with HRP-conjugated anti-rabbit IgG antibody (GTX213110-01) diluted at 1:5000.



GTX213110-01 IHC-P Image

WBP11 antibody detects WBP11 protein at nucleus in rat prostate by immunohistochemical analysis. Sample: Paraffin-embedded rat prostate. WBP11 antibody (GTX118654) diluted at 1:500. The signal was developed by Rabbit IgG antibody (HRP) (GTX213110-01). Antigen Retrieval: Citrate buffer, pH 6.0, 15 min

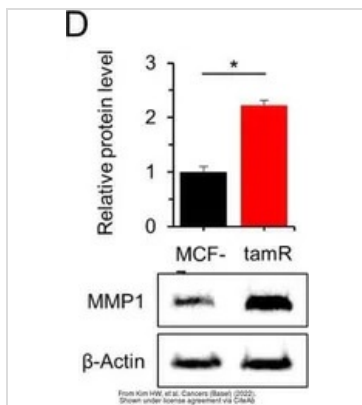


GTX213110-01 WB Image

Various whole cell extracts were separated by 10% SDS-PAGE, and the membrane was blotted with alpha Tubulin antibody (GTX112141) diluted at 1:10000. The HRP-conjugated anti-rabbit IgG antibody (GTX213110-01) was used to detect the primary antibody.

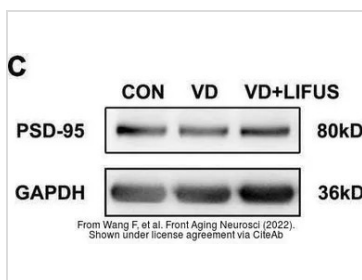


For full product information, images and publications, please visit our [website](#).



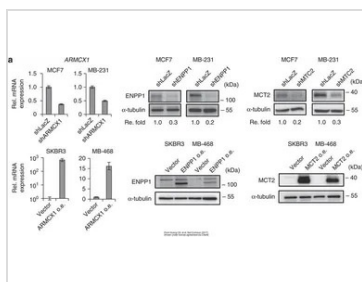
GTx213110-01 WB Image

The data was published in the 2022 in Cancers (Basel). [PMID: 35267540](https://pubmed.ncbi.nlm.nih.gov/35267540/)



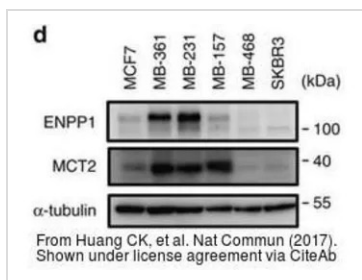
GTx213110-01 WB Image

The data was published in the 2022 in Front Aging Neurosci. [PMID: 35264943](https://pubmed.ncbi.nlm.nih.gov/35264943/)



GTx213110-01 WB Image

The data was published in the 2017 in Nat Commun. [PMID: 28281525](https://pubmed.ncbi.nlm.nih.gov/28281525/)

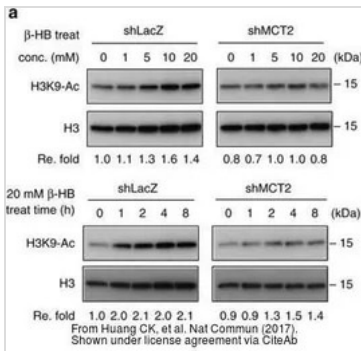


GTx213110-01 WB Image

The data was published in the 2017 in Nat Commun. [PMID: 28281525](https://pubmed.ncbi.nlm.nih.gov/28281525/)

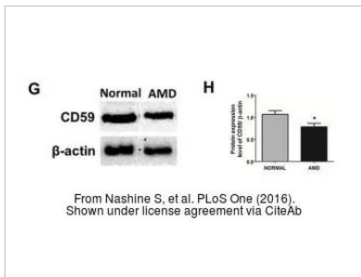


For full product information, images and publications, please visit our [website](https://www.genetex.com).



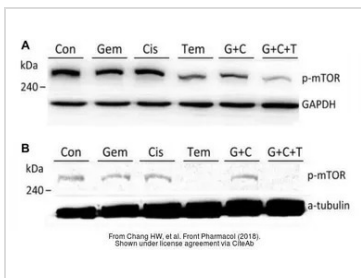
GTx213110-01 WB Image

The data was published in the 2017 in Nat Commun. [PMID: 28281525](https://pubmed.ncbi.nlm.nih.gov/28281525/)



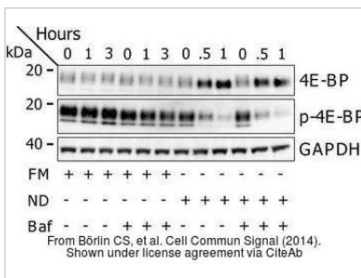
GTx213110-01 WB Image

The data was published in the 2016 in PLoS One. [PMID: 27486856](https://pubmed.ncbi.nlm.nih.gov/27486856/)



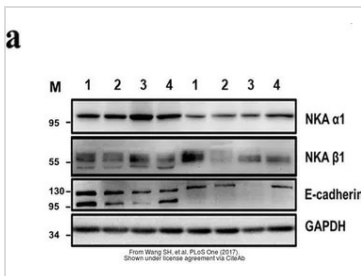
GTx213110-01 WB Image

The data was published in the journal Front Pharmacol in 2018. [PMID: 30087612](https://pubmed.ncbi.nlm.nih.gov/30087612/)



GTx213110-01 WB Image

The data was published in the journal Cell Commun Signal in 2014. [PMID: 25214434](https://pubmed.ncbi.nlm.nih.gov/25214434/)

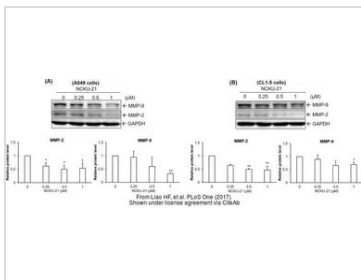


GTx213110-01 WB Image

The data was published in the journal PLoS One in 2017. [PMID: 28832634](https://pubmed.ncbi.nlm.nih.gov/28832634/)

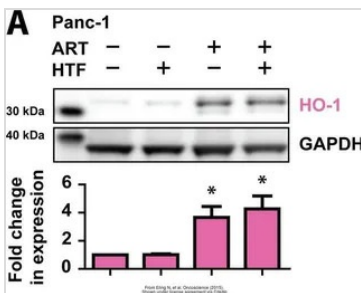


For full product information, images and publications, please visit our [website](http://www.genetex.com).



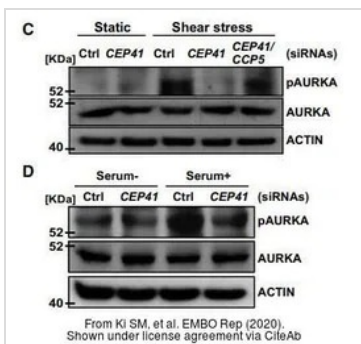
GTX213110-01 WB Image

The data was published in the journal PLoS One in 2017. [PMID: 28945763](https://pubmed.ncbi.nlm.nih.gov/28945763/)



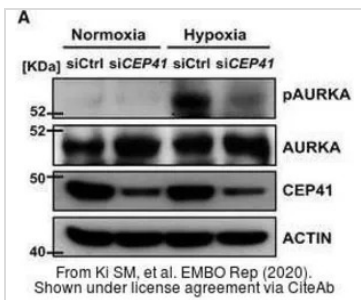
GTX213110-01 WB Image

The data was published in the journal Oncoscience in 2015. [PMID: 26097885](https://pubmed.ncbi.nlm.nih.gov/26097885/)



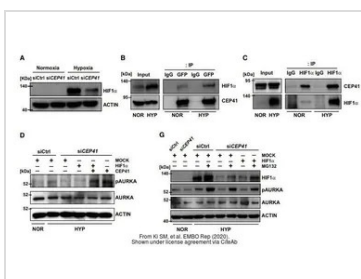
GTX213110-01 WB Image

The data was published in the journal EMBO Rep in 2020. [PMID: 31885126](https://pubmed.ncbi.nlm.nih.gov/31885126/)



GTX213110-01 WB Image

The data was published in the journal EMBO Rep in 2020. [PMID: 31885126](https://pubmed.ncbi.nlm.nih.gov/31885126/)



GTX213110-01 WB Image

The data was published in the journal EMBO Rep in 2020. [PMID: 31885126](https://pubmed.ncbi.nlm.nih.gov/31885126/)



For full product information, images and publications, please visit our [website](https://www.genetex.com).

E-Cadherin antibody [HL1229]

Cat. No. GTX636577

Host	Rabbit
Clonality	Monoclonal
Isotype	IgG
Applications	WB, ICC/IF, IHC-P
Reactivity	Human, Mouse, Rat, Cat, Dog

References (3)

Package
100 µl, 25 µl

Applications

Application Note

*Optimal dilutions/concentrations should be determined by the researcher.

Suggested dilution	Recommended dilution
WB	1:500-1:3000
ICC/IF	Assay dependent
IHC-P	1:100-1:1000

Not tested in other applications.

Observed MW (kDa) 105-125 kDa.

Properties

Form	Liquid
Buffer	PBS
Preservative	No preservatives
Storage	Store as concentrated solution. Centrifuge briefly prior to opening vial. For short-term storage (1-2 weeks), store at 4°C. For long-term storage, aliquot and store at -20°C or below. Avoid multiple freeze-thaw cycles.
Concentration	1 mg/ml (Please refer to the vial label for the specific concentration.)
Immunogen	Recombinant protein encompassing a sequence within the center region of human E-Cadherin. The exact sequence is proprietary.
Purification	Affinity purified by Protein A.
Conjugation	Unconjugated

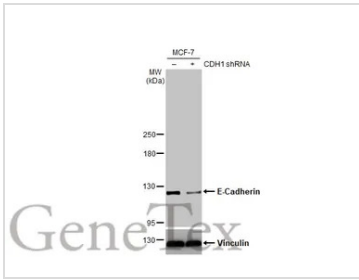
Note

For laboratory research use only. Not for any clinical, therapeutic, or diagnostic use in humans or animals. Not for animal or human consumption.

Purchasers shall not, and agree not to enable third parties to, analyze, copy, reverse engineer or otherwise attempt to determine the structure or sequence of the product.

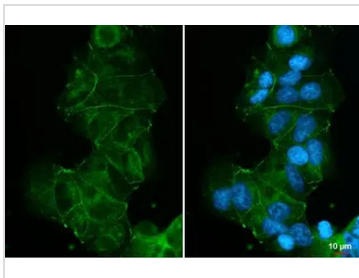
For full product information, images and publications, please visit our [website](#).

DATA IMAGES



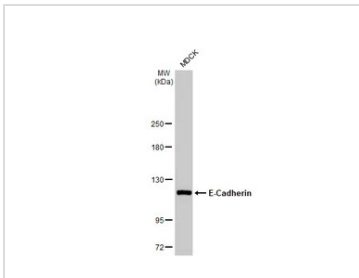
GTX636577 WB Image

Non-transfected (-) and transfected (+) MCF-7 whole cell extracts (30 µg) were separated by 5% SDS-PAGE, and the membrane was blotted with E-Cadherin antibody [HL1229] (GTX636577) diluted at 1:1000. The HRP-conjugated anti-rabbit IgG antibody (GTX213110-01) was used to detect the primary antibody.



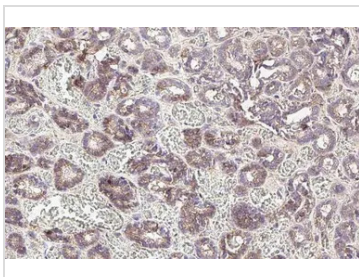
GTX636577 ICC/IF Image

E-Cadherin antibody [HL1229] detects E-Cadherin protein at cell membrane by immunofluorescent analysis. Sample: MCF-7 cells were fixed in 4% paraformaldehyde at RT for 15 min. Green: E-Cadherin stained by E-Cadherin antibody [HL1229] (GTX636577) diluted at 1:500. Blue: Fluoroshield with DAPI (GTX30920).



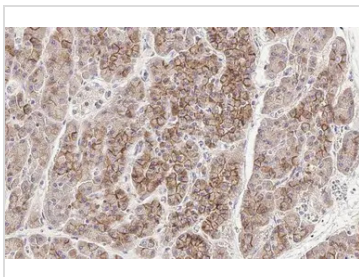
GTX636577 WB Image

Whole cell extract (30 µg) was separated by 5% SDS-PAGE, and the membrane was blotted with E-Cadherin antibody [HL1229] (GTX636577) diluted at 1:1000. The HRP-conjugated anti-rabbit IgG antibody (GTX213110-01) was used to detect the primary antibody.



GTX636577 IHC-P Image

E-Cadherin antibody [HL1229] detects E-Cadherin protein at cytoplasm by immunohistochemical analysis. Sample: Paraffin-embedded dog mammary gland. E-Cadherin stained by E-Cadherin antibody [HL1229] (GTX636577) diluted at 1:100. Antigen Retrieval: Citrate buffer, pH 6.0, 15 min

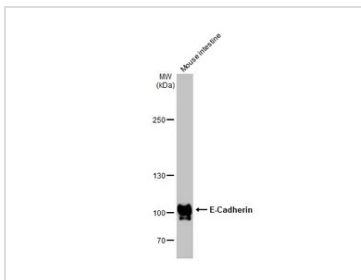


GTX636577 IHC-P Image

E-Cadherin antibody [HL1229] detects E-Cadherin protein by immunohistochemical analysis. Sample: Paraffin-embedded cat pancreas. E-Cadherin stained by E-Cadherin antibody [HL1229] (GTX636577) diluted at 1:100. Antigen Retrieval: Citrate buffer, pH 6.0, 15 min

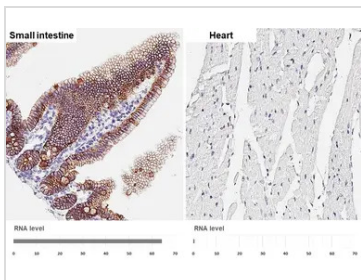


For full product information, images and publications, please visit our [website](#).



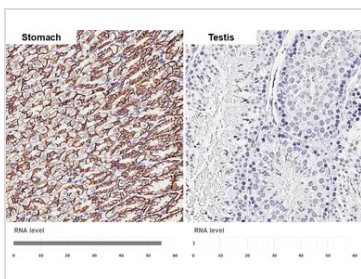
GTX636577 WB Image

Mouse tissue extract (50 µg) was separated by 5% SDS-PAGE, and the membrane was blotted with E-Cadherin antibody [HL1229] (GTX636577) diluted at 1:1000. The HRP-conjugated anti-rabbit IgG antibody (GTX213110-01) was used to detect the primary antibody.



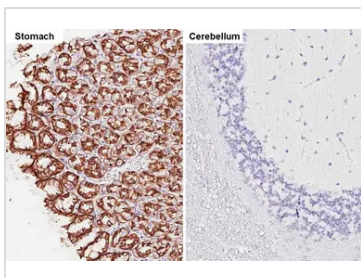
GTX636577 IHC-P Image

E-Cadherin antibody [HL1229] detects E-Cadherin protein by immunohistochemical analysis.
 Sample: Paraffin-embedded mouse tissues.
 E-Cadherin stained by E-Cadherin antibody [HL1229] (GTX636577) diluted at 1:1250.
 Antigen Retrieval: Tris-EDTA buffer, pH 9.0, 15 min
 Corresponding RNA levels (RPKM) in the tissues are based on NCBI database.



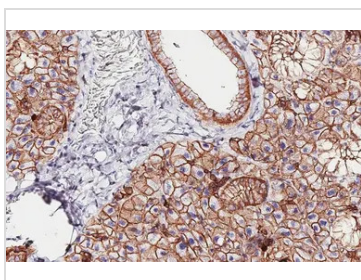
GTX636577 IHC-P Image

E-Cadherin antibody [HL1229] detects E-Cadherin protein by immunohistochemical analysis.
 Sample: Paraffin-embedded mouse tissues.
 E-Cadherin stained by E-Cadherin antibody [HL1229] (GTX636577) diluted at 1:1250.
 Antigen Retrieval: Tris-EDTA buffer, pH 9.0, 15 min
 Corresponding RNA levels (RPKM) in the tissues are based on NCBI database.



GTX636577 IHC-P Image

E-Cadherin antibody [HL1229] detects E-Cadherin protein by immunohistochemical analysis.
 Sample: Paraffin-embedded rat tissues.
 E-Cadherin stained by E-Cadherin antibody [HL1229] (GTX636577) diluted at 1:1000.
 Antigen Retrieval: Tris-EDTA buffer, pH 9.0, 15 min

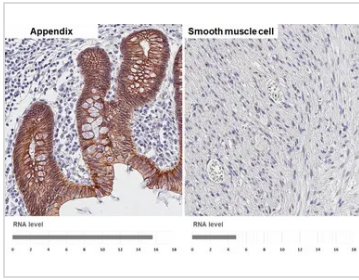


GTX636577 IHC-P Image

E-Cadherin antibody [HL1229] detects E-Cadherin protein by immunohistochemical analysis.
 Sample: Paraffin-embedded rat salivary gland.
 E-Cadherin stained by E-Cadherin antibody [HL1229] (GTX636577) diluted at 1:1000.
 Antigen Retrieval: Tris-EDTA buffer, pH 9.0, 15 min

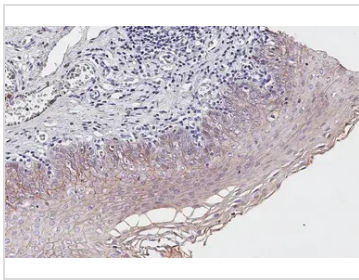


For full product information, images and publications, please visit our [website](#).



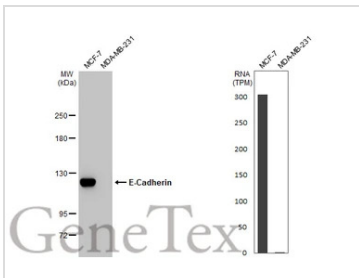
GTX636577 IHC-P Image

E-Cadherin antibody [HL1229] detects E-Cadherin protein by immunohistochemical analysis.
 Sample: Paraffin-embedded human tissues.
 E-Cadherin stained by E-Cadherin antibody [HL1229] (GTX636577) diluted at 1:1000.
 Antigen Retrieval: Tris-EDTA buffer, pH 9.0, 15 min
 Corresponding RNA levels (nTPM) in the tissues are based on Human Protein Atlas program.



GTX636577 IHC-P Image

E-Cadherin antibody [HL1229] detects E-Cadherin protein by immunohistochemical analysis.
 Sample: Paraffin-embedded human tonsil.
 E-Cadherin stained by E-Cadherin antibody [HL1229] (GTX636577) diluted at 1:1000.
 Antigen Retrieval: Tris-EDTA buffer, pH 9.0, 15 min



GTX636577 WB Image

Various whole cell extracts (30 µg) were separated by 5% SDS-PAGE, and the membrane was blotted with E-Cadherin antibody [HL1229] (GTX636577) diluted at 1:1000. The HRP-conjugated anti-rabbit IgG antibody (GTX213110-01) was used to detect the primary antibody. Corresponding RNA expression data for the same cell lines are based on Human Protein Atlas program.



For full product information, images and publications, please visit our [website](http://www.genetex.com).

Vimentin antibody [HL1506]

Cat. No. GTX636980

Host	Rabbit
Clonality	Monoclonal
Isotype	IgG
Applications	WB, ICC/IF, IHC-P
Reactivity	Human, Mouse, Rat, Cat

 Review (1)

Package
 100 µl, 25 µl

Applications

Application Note

*Optimal dilutions/concentrations should be determined by the researcher.

Suggested dilution	Recommended dilution
WB	1:1000-1:10000
ICC/IF	Assay dependent
IHC-P	Assay dependent

Not tested in other applications.

Observed MW (kDa) 54 kDa.

Properties

Form	Liquid
Buffer	PBS
Preservative	No preservatives
Storage	Store as concentrated solution. Centrifuge briefly prior to opening vial. For short-term storage (1-2 weeks), store at 4°C. For long-term storage, aliquot and store at -20°C or below. Avoid multiple freeze-thaw cycles.
Concentration	1 mg/ml (Please refer to the vial label for the specific concentration.)
Immunogen	Recombinant protein encompassing a sequence within the center region of human Vimentin. The exact sequence is proprietary.
Purification	Affinity purified by Protein A.
Conjugation	Unconjugated

Note

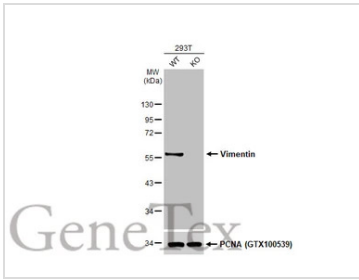
For laboratory research use only. Not for any clinical, therapeutic, or diagnostic use in humans or animals. Not for animal or human consumption.

Purchasers shall not, and agree not to enable third parties to, analyze, copy, reverse engineer or otherwise attempt to determine the structure or sequence of the product.



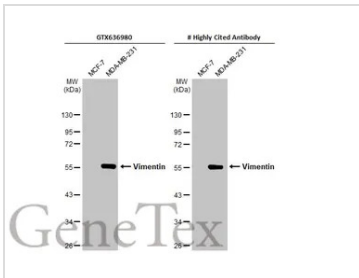
For full product information, images and publications, please visit our [website](#).

DATA IMAGES



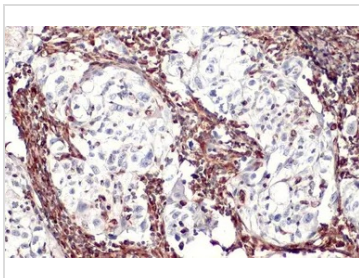
GTX636980 WB Image

Wild-type (WT) and Vimentin knockout (KO) HeLa cell extracts (30 µg) were separated by 10% SDS-PAGE, and the membrane was blotted with Vimentin antibody [HL1506] (GTX636980) diluted at 1:5000. The HRP-conjugated anti-rabbit IgG antibody (GTX213110-01) was used to detect the primary antibody.



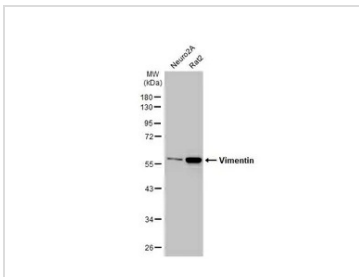
GTX636980 WB Image

Various whole cell extracts (30 µg) were separated by 10% SDS-PAGE, and the membranes were blotted with Vimentin antibody [HL1506] (GTX636980) diluted at 1:5000 and competitor's antibody (# Highly Cited Antibody) diluted at 1:5000. The HRP-conjugated anti-rabbit IgG antibody (GTX213110-01) was used to detect the primary antibody. *The competitor is not affiliated with GeneTex and does not endorse this product.



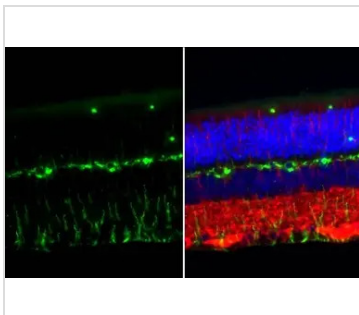
GTX636980 IHC-P Image

Vimentin antibody [HL1506] detects Vimentin protein at cytoplasm by immunohistochemical analysis. Sample: Paraffin-embedded human breast carcinoma. Vimentin stained by Vimentin antibody [HL1506] (GTX636980) diluted at 1:500. Antigen Retrieval: Citrate buffer, pH 6.0, 15 min



GTX636980 WB Image

Various whole cell extracts (30 µg) were separated by 10% SDS-PAGE, and the membrane was blotted with Vimentin antibody [HL1506] (GTX636980) diluted at 1:5000. The HRP-conjugated anti-rabbit IgG antibody (GTX213110-01) was used to detect the primary antibody, and the signal was developed with Trident ECL plus-Enhanced.

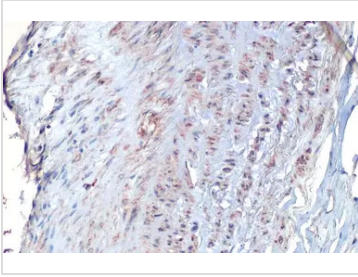


GTX636980 IHC-P Image

Vimentin antibody [HL1506] detects Vimentin protein by immunohistochemical analysis. Sample: Paraffin-embedded mouse eye. Green: Vimentin stained by Vimentin antibody [HL1506] (GTX636980) diluted at 1:100. Red: beta Tubulin 3/ Tuj1, a Cytoskeleton marker, stained by beta Tubulin 3/ Tuj1 antibody [GT11710] (GTX631836) diluted at 1:500. Blue: Fluoroshield with DAPI (GTX30920). Antigen Retrieval: Citrate buffer, pH 6.0, 15 min



For full product information, images and publications, please visit our [website](http://www.genetex.com).

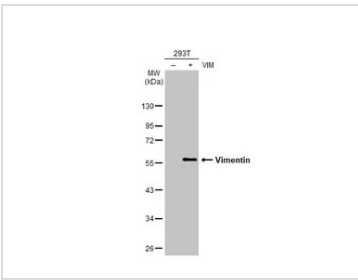
**GTX636980 IHC-P Image**

Vimentin antibody [HL1506] detects Vimentin protein at cell membrane and cytoplasm by immunohistochemical analysis.

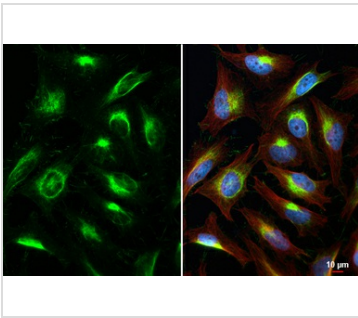
Sample: Paraffin-embedded human lung cancer.

Vimentin stained by Vimentin antibody [HL1506] (GTX636980) diluted at 1:100.

Antigen Retrieval: Citrate buffer, pH 6.0, 15 min

**GTX636980 WB Image**

Non-transfected (-) and transfected (+) 293T whole cell extracts (10 µg) were separated by 10% SDS-PAGE, and the membrane was blotted with Vimentin antibody [HL1506] (GTX636980) diluted at 1:25000. The HRP-conjugated anti-rabbit IgG antibody (GTX213110-01) was used to detect the primary antibody.

**GTX636980 ICC/IF Image**

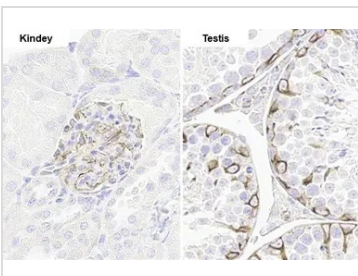
Vimentin antibody [HL1506] detects Vimentin protein at cytoskeleton and cell junction by immunofluorescent analysis.

Sample: HeLa cells were fixed in 4% paraformaldehyde at RT for 15 min.

Green: Vimentin stained by Vimentin antibody [HL1506] (GTX636980) diluted at 1:500.

Red: alpha Tubulin, a cytoskeleton marker, stained by alpha Tubulin antibody [GT114] (GTX628802) diluted at 1:1000.

Blue: Fluoroshield with DAPI (GTX30920).

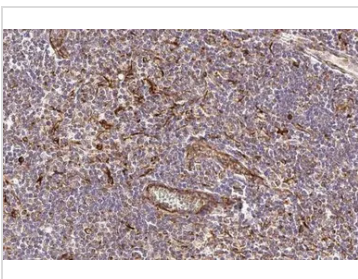
**GTX636980 IHC-P Image**

Vimentin antibody [HL1506] detects Vimentin protein by immunohistochemical analysis.

Sample: Paraffin-embedded mouse tissue.

Vimentin stained by Vimentin antibody [HL1506] (GTX636980) diluted at 1:100.

Antigen Retrieval: Citrate buffer, pH 6.0, 15 min

**GTX636980 IHC-P Image**

Vimentin antibody [HL1506] detects Vimentin protein at cytoplasm by immunohistochemical analysis.

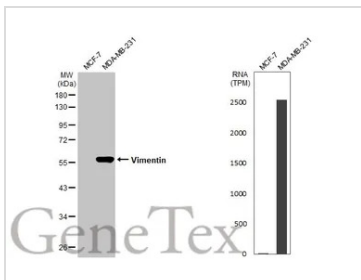
Sample: Paraffin-embedded cat lymph node.

Vimentin stained by Vimentin antibody [HL1506] (GTX636980) diluted at 1:100.

Antigen Retrieval: Citrate buffer, pH 6.0, 15 min

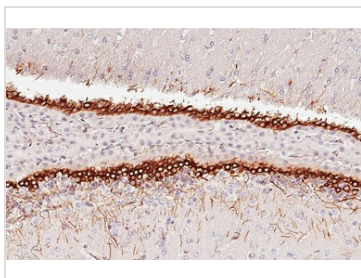


For full product information, images and publications, please visit our [website](#).



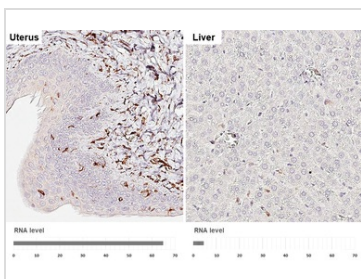
GTX636980 WB Image

Various whole cell extracts (30 µg) were separated by 10% SDS-PAGE, and the membrane was blotted with Vimentin antibody [HL1506] (GTX636980) diluted at 1:5000. The HRP-conjugated anti-rabbit IgG antibody (GTX213110-01) was used to detect the primary antibody. Corresponding RNA expression data for the same cell lines are based on Human Protein Atlas program.



GTX636980 IHC-P Image

Vimentin antibody [HL1506] detects Vimentin protein by immunohistochemical analysis.
 Sample: Paraffin-embedded rat brain ventricle.
 Vimentin stained by Vimentin antibody [HL1506] (GTX636980) diluted at 1:100.
 Antigen Retrieval: Citrate buffer, pH 6.0, 15 min



GTX636980 IHC-P Image

Vimentin antibody [HL1506] detects Vimentin protein by immunohistochemical analysis.
 Sample: Paraffin-embedded rat tissues.
 Vimentin stained by Vimentin antibody [HL1506] (GTX636980) diluted at 1:100.
 Antigen Retrieval: Citrate buffer, pH 6.0, 15 min
 Corresponding RNA levels (RPKM) in the tissues are based on NCBI database.



For full product information, images and publications, please visit our [website](#).

Fibronectin antibody [HL2761]

Cat. No. GTX639626

Host	Rabbit
Clonality	Monoclonal
Isotype	IgG
Applications	WB, ICC/IF
Reactivity	Human

Package
100 µl, 25 µl

Applications

Application Note

*Optimal dilutions/concentrations should be determined by the researcher.

Suggested dilution	Recommended dilution
WB	1:500-1:3000
ICC/IF	Assay dependent

Not tested in other applications.

Observed MW (kDa) 263 kDa.

Properties

Form Liquid

Buffer PBS

Preservative No preservatives

Storage Store as concentrated solution. Centrifuge briefly prior to opening vial. For short-term storage (1-2 weeks), store at 4°C. For long-term storage, aliquot and store at -20°C or below. Avoid multiple freeze-thaw cycles.

Concentration 1 mg/ml (Please refer to the vial label for the specific concentration.)

Immunogen Recombinant fragment of human Fibronectin.

Purification Affinity purified by Protein A.

Conjugation Unconjugated

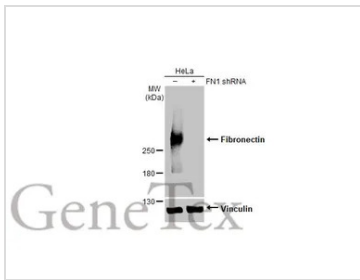
Note For laboratory research use only. Not for any clinical, therapeutic, or diagnostic use in humans or animals. Not for animal or human consumption.

Purchasers shall not, and agree not to enable third parties to, analyze, copy, reverse engineer or otherwise attempt to determine the structure or sequence of the product.



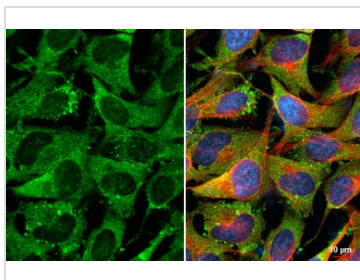
For full product information, images and publications, please visit our [website](#).

DATA IMAGES



GTX639626 WB Image

Non-transfected (-) and transfected (+) HeLa whole cell extracts (30 µg) were separated by 5% SDS-PAGE, and the membrane was blotted with Fibronectin antibody [HL2761] (GTX639626) diluted at 1:1000. The HRP-conjugated anti-rabbit IgG antibody (GTX213110-01) was used to detect the primary antibody.



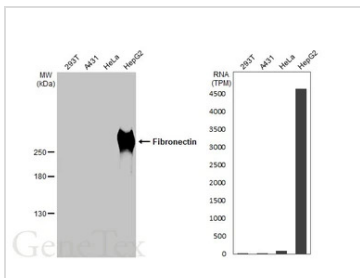
GTX639626 ICC/IF Image

Fibronectin antibody [HL2761] detects Fibronectin protein at cytoplasm by immunofluorescent analysis. Sample: HeLa cells were fixed in 4% paraformaldehyde at RT for 15 min.

Green: Fibronectin stained by Fibronectin antibody [HL2761] (GTX639626) diluted at 1:500.

Red: alpha Tubulin, a cytoskeleton marker, stained by alpha Tubulin antibody [GT114] (GTX628802) diluted at 1:1000.

Blue: Fluoroshield with DAPI (GTX30920).



GTX639626 WB Image

Various whole cell extracts (30 µg) were separated by 5% SDS-PAGE, and the membrane was blotted with Fibronectin antibody [HL2761] (GTX639626) diluted at 1:1000. The HRP-conjugated anti-rabbit IgG antibody (GTX213110-01) was used to detect the primary antibody. Corresponding RNA expression data for the same cell lines are based on Human Protein Atlas program.



For full product information, images and publications, please visit our [website](#).