

# GTX300101

## Antibody panel for EMT

### Product Content

Cat No	Product Name	Reactivity	Application	Package
GTX100619	Vimentin antibody	Human, Mouse, Rat, Cat, Dog	WB, ICC/IF, IHC-P, IHC-Fr, IP, ELISA, IHC, Sandwich ELISA, IHC (Free Floating)	10 µl
GTX127310	Twist1/2 antibody	Human, Mouse, Rat, Drosophila	WB, IHC-P, IHC	10 µl
GTX213110-01	Goat Anti-Rabbit IgG antibody (HRP)	Rabbit	WB, IHC-P, ELISA	25 µl

### Note

For In vitro laboratory use only. Not for any clinical, therapeutic, or diagnostic use in humans or animals. Not for animal or human consumption.



For full product information, images and publications, please visit our [website](#).

# Vimentin antibody

**Cat. No. GTX100619**

<b>Host</b>	Rabbit
<b>Clonality</b>	Polyclonal
<b>Isotype</b>	IgG
<b>Application</b>	WB, ICC/IF, IHC-P, IHC-Fr, IP, ELISA, IHC, Sandwich ELISA, IHC (Free Floating)
<b>Reactivity</b>	Human, Mouse, Rat, Cat, Dog

Reference ( 127 )

★★★★★ Review ( 6 )

Package

100 µl, 25 µl

## PRODUCT

### Summary

Vimentin antibody detects vimentin, a type III intermediate filament protein with a predicted molecular weight of 54 kDa. Vimentin is highly expressed in cells of mesodermal origin as well as in some ectodermal cells, and is often used as a marker of mesenchymal stem cells. It is also utilized in combination with E-cadherin to study the morphological and phenotypic changes in cells undergoing epithelial-mesenchymal transition during development and tumor metastasis. In addition, vimentin antibody is a valuable reagent to stain neuronal precursors and developing radial glia cells.

## APPLICATION

### Application Note

\*Optimal dilutions/concentrations should be determined by the researcher.

Suggested dilution	Recommended dilution
WB	1:5000-1:50000
ICC/IF	1:100-1:1000
IHC-P	1:100-1:1000
IHC-Fr	Assay dependent
IP	1:100-1:500
ELISA	Assay dependent
IHC	Assay dependent
Sandwich ELISA	Assay dependent
IHC (Free Floating)	Assay dependent

**Note : Capture : GTX629743 / GTX629744, Detection : GTX100619**

Not tested in other applications.

### Calculated MW

54 kDa. ( [Note](#) )

### Observed MW

56 kDa. The observed M.W. is based on the following publication. PMID: 23185433 and 24926698

## PROPERTIES

### Form

Liquid



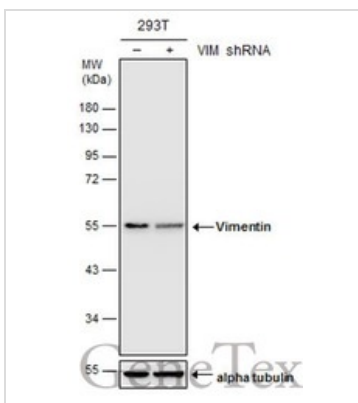
For full product information, images and publications, please visit our [website](#).

<b>Buffer</b>	PBS, 20% Glycerol
<b>Preservative</b>	0.025% ProClin 300
<b>Storage</b>	Store as concentrated solution. Centrifuge briefly prior to opening vial. For short-term storage (1-2 weeks), store at 4°C. For long-term storage, aliquot and store at -20°C or below. Avoid multiple freeze-thaw cycles.
<b>Concentration</b>	1.14 mg/ml (Please refer to the vial label for the specific concentration.)
<b>Immunogen</b>	Recombinant protein encompassing a sequence within the center region of human Vimentin. The exact sequence is proprietary.
<b>Purification</b>	Purified by antigen-affinity chromatography.
<b>Conjugation</b>	Unconjugated

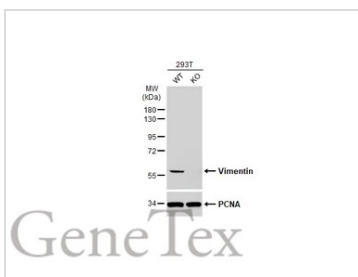
**Note**

For laboratory research use only. Not for any clinical, therapeutic, or diagnostic use in humans or animals. Not for animal or human consumption.

Purchasers shall not, and agree not to enable third parties to, analyze, copy, reverse engineer or otherwise attempt to determine the structure or sequence of the product.

**DATA IMAGES**

**GTX100619 WB Image**

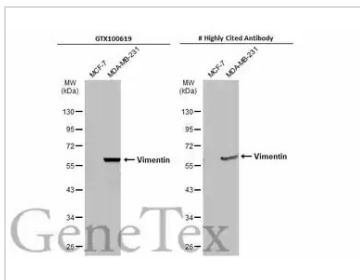
Non-transfected (-) and transfected (+) 293T whole cell extracts (30 µg) were separated by 10% SDS-PAGE, and the membrane was blotted with Vimentin antibody (GTX100619) diluted at 1:20000.


**GTX100619 WB Image**

Wild-type (WT) and Vimentin knockout (KO) 293T cell extracts (30 µg) were separated by 10% SDS-PAGE, and the membrane was blotted with Vimentin antibody (GTX100619) diluted at 1:50000. The HRP-conjugated anti-rabbit IgG antibody (GTX213110-01) was used to detect the primary antibody.



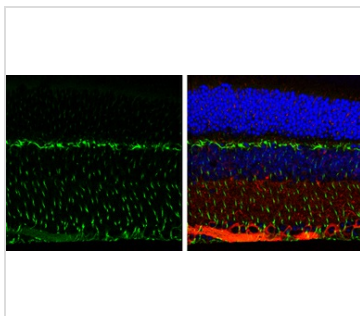
For full product information, images and publications, please visit our [website](https://www.genetex.com).



#### GTX100619 WB Image

Various whole cell extracts (30 µg) were separated by 10% SDS-PAGE, and the membranes were blotted with Vimentin antibody (GTX100619) diluted at 1:5000 and competitor's antibody diluted at 1:5000. The HRP-conjugated anti-rabbit IgG antibody (GTX213110-01) was used to detect the primary antibody.

\*The competitor is not affiliated with GeneTex and does not endorse this product.



#### GTX100619 IHC-P Image

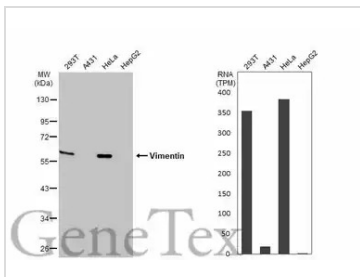
Vimentin antibody detects Vimentin protein expression by immunohistochemical analysis.

Sample: Paraffin-Embedded adult mouse retina.

Green: Vimentin protein stained by Vimentin antibody (GTX100619) diluted at 1:250.

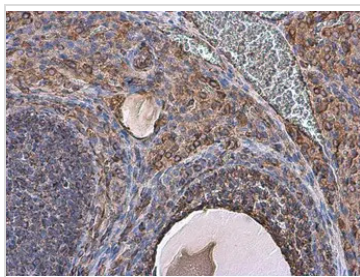
Red: beta Tubulin 3/ TUJ1, stained by beta Tubulin 3/ TUJ1 antibody [GT11710] (GTX631836) diluted at 1:500.

Blue: Fluoroshield with DAPI (GTX30920).



#### GTX100619 WB Image

Various whole cell extracts (30 µg) were separated by 10% SDS-PAGE, and the membrane was blotted with Vimentin antibody (GTX100619) diluted at 1:50000. The HRP-conjugated anti-rabbit IgG antibody (GTX213110-01) was used to detect the primary antibody. Corresponding RNA expression data for the same cell lines are based on Human Protein Atlas program.



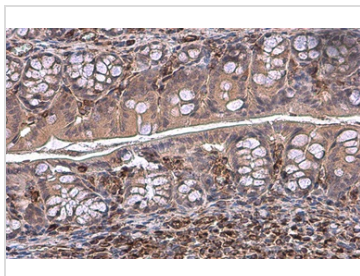
#### GTX100619 IHC-P Image

Vimentin antibody detects Vimentin protein at cell membrane and cytoplasm in rat ovary by immunohistochemical analysis.

Sample: Paraffin-embedded rat ovary.

Vimentin antibody (GTX100619) diluted at 1:500.

Antigen Retrieval: Citrate buffer, pH 6.0, 15 min



#### GTX100619 IHC-P Image

Vimentin antibody detects Vimentin protein at cytoplasm by immunohistochemical analysis.

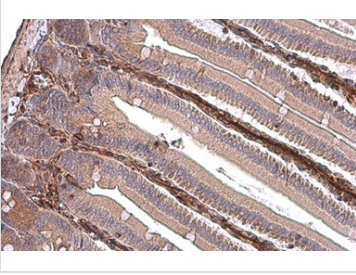
Sample: Paraffin-embedded mouse colon.

Vimentin stained by Vimentin antibody (GTX100619) diluted at 1:500.

Antigen Retrieval: Citrate buffer, pH 6.0, 15 min



For full product information, images and publications, please visit our [website](https://www.genetex.com).

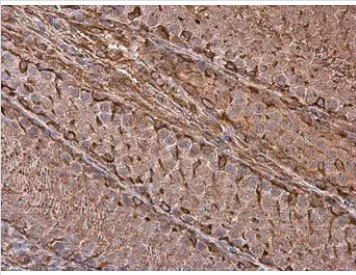

**GTX100619 IHC-P Image**

Vimentin antibody detects Vimentin protein at cytoplasm by immunohistochemical analysis.

Sample: Paraffin-embedded mouse intestine.

Vimentin stained by Vimentin antibody (GTX100619) diluted at 1:500.

Antigen Retrieval: Citrate buffer, pH 6.0, 15 min

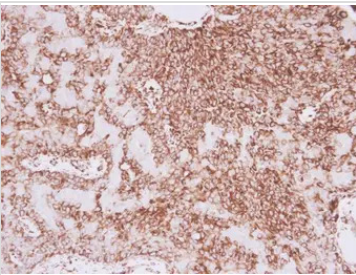

**GTX100619 IHC-P Image**

Vimentin antibody detects Vimentin protein at cell membrane and cytoplasm in rat testis by immunohistochemical analysis.

Sample: Paraffin-embedded rat testis.

Vimentin antibody (GTX100619) diluted at 1:500.

Antigen Retrieval: Citrate buffer, pH 6.0, 15 min

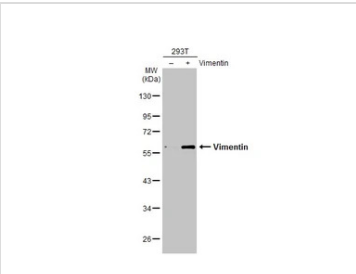

**GTX100619 IHC-P Image**

Vimentin antibody detects Vimentin protein at cytoplasm in human lung adenocarcinoma by immunohistochemical analysis.

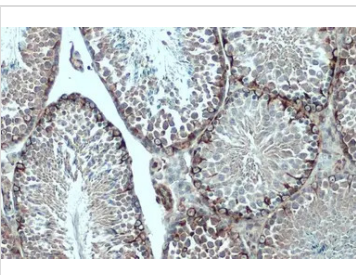
Sample: Paraffin-embedded human lung adenocarcinoma.

Vimentin antibody (GTX100619) diluted at 1:500.

Antigen Retrieval: Trilogy™ (EDTA based, pH 8.0) buffer, 15min


**GTX100619 WB Image**

Non-transfected (–) and transfected (+) 293T whole cell extracts (10 µg) were separated by 10% SDS-PAGE, and the membrane was blotted with Vimentin antibody (GTX100619) diluted at 1:10000. The HRP-conjugated anti-rabbit IgG antibody (GTX213110-01) was used to detect the primary antibody.


**GTX100619 IHC-P Image**

Vimentin antibody detects Vimentin protein at cytoplasm by immunohistochemical analysis.

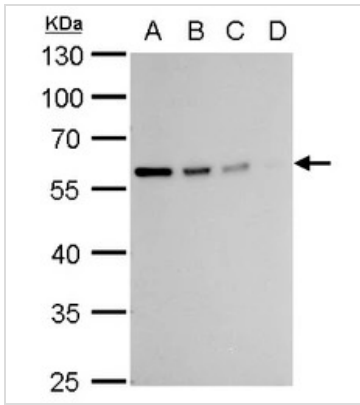
Sample: Paraffin-embedded mouse testis.

Vimentin stained by Vimentin antibody (GTX100619) diluted at 1:500.

Antigen Retrieval: Citrate buffer, pH 6.0, 15



For full product information, images and publications, please visit our [website](https://www.genetex.com).



#### GTx100619 WB Image

Vimentin antibody detects Vimentin protein by western blot analysis.

A. 20  $\mu$ g 293T whole cell lysate/extract

B. 10  $\mu$ g 293T whole cell lysate/extract

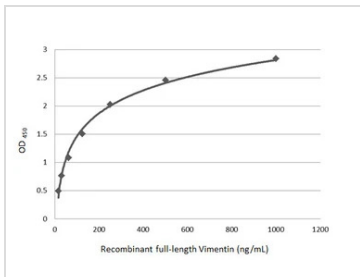
C. 5  $\mu$ g 293T whole cell lysate/extract

D. 1  $\mu$ g 293T whole cell lysate/extract

10% SDS-PAGE

Vimentin antibody (GTx100619) dilution: 1:10000

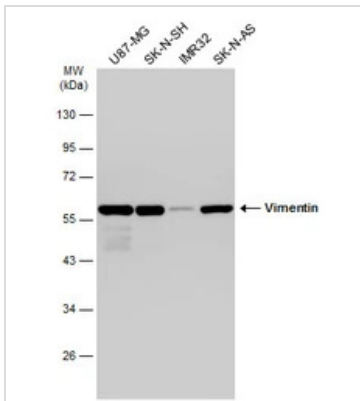
The HRP-conjugated anti-rabbit IgG antibody (GTx213110-01) was used to detect the primary antibody.



#### GTx100619 ELISA Image

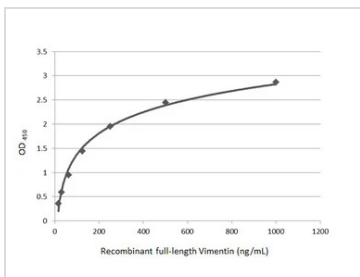
Sandwich ELISA detection of recombinant full-length Vimentin protein using GTx629743 as capture antibody at concentration of 5  $\mu$ g/mL and GTx100619 as detection antibody at concentration of 1  $\mu$ g/mL.

Rabbit IgG antibody (HRP) (GTx213110-01) was diluted at 1:10000 and used to detect the primary antibody.



#### GTx100619 WB Image

Various whole cell extracts (30  $\mu$ g) were separated by 10% SDS-PAGE, and the membrane was blotted with Vimentin antibody (GTx100619) diluted at 1:50000. The HRP-conjugated anti-rabbit IgG antibody (GTx213110-01) was used to detect the primary antibody.



#### GTx100619 ELISA Image

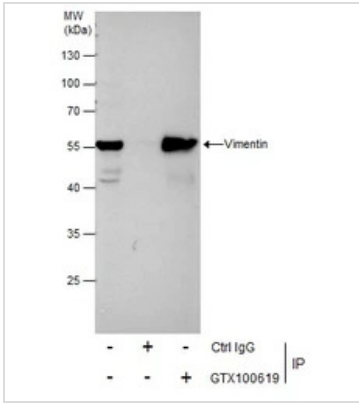
Sandwich ELISA detection of recombinant full-length Vimentin protein using GTx629744 as capture antibody at concentration of 5  $\mu$ g/mL and GTx100619 as detection antibody at concentration of 1  $\mu$ g/mL.

Rabbit IgG antibody (HRP) (GTx213110-01) was diluted at 1:10000 and used to detect the primary antibody.



For full product information, images and publications, please visit our [website](https://www.genetex.com).



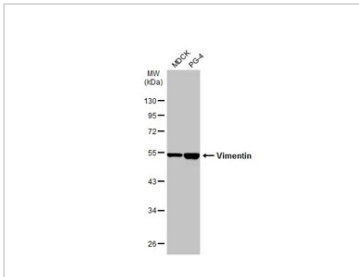


## GTX100619 IP Image

Immunoprecipitation of Vimentin protein from HeLa whole cell extracts using 5 µg of Vimentin antibody (GTX100619).

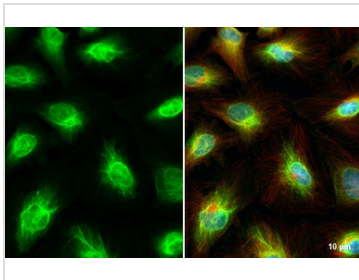
Western blot analysis was performed using Vimentin antibody (GTX100619).

EasyBlot anti-Rabbit IgG (GTX221666-01) was used as a secondary reagent.



## GTX100619 WB Image

Various whole cell extracts (30 µg) were separated by 10% SDS-PAGE, and the membrane was blotted with Vimentin antibody (GTX100619) diluted at 1:20000. The HRP-conjugated anti-rabbit IgG antibody (GTX213110-01) was used to detect the primary antibody.



## GTX100619 ICC/IF Image

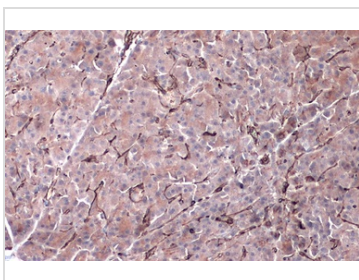
Vimentin antibody detects Vimentin protein at cytoskeleton and nucleus by immunofluorescent analysis.

Sample: HeLa cells were fixed in 4% paraformaldehyde at RT for 15 min.

Green: Vimentin stained by Vimentin antibody (GTX100619) diluted at 1:500.

Red: alpha Tubulin, a cytoskeleton marker, stained by alpha Tubulin antibody [GT114] (GTX628802) diluted at 1:1000.

Blue: Fluoroshield with DAPI (GTX30920).



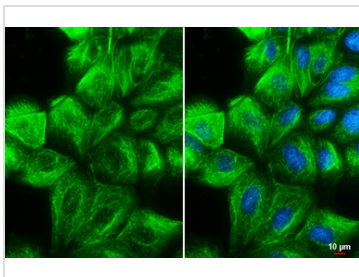
## GTX100619 IHC-P Image

Vimentin antibody detects Vimentin protein by immunohistochemical analysis.

Sample: Paraffin-embedded dog pancreas.

Vimentin stained by Vimentin antibody (GTX100619) diluted at 1:500.

Antigen Retrieval: Citrate buffer, pH 6.0, 15 min



## GTX100619 ICC/IF Image

Vimentin antibody detects Vimentin protein at cytoskeleton by immunofluorescent analysis.

Sample: MDCK cells were fixed in 4% paraformaldehyde at RT for 15 min.

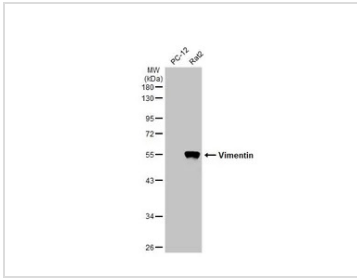
Green: Vimentin stained by Vimentin antibody (GTX100619) diluted at 1:500.

Blue: Hoechst 33342 staining.

Scale bar= 10 µm.

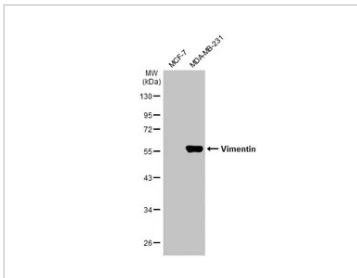


For full product information, images and publications, please visit our [website](https://www.genetex.com).



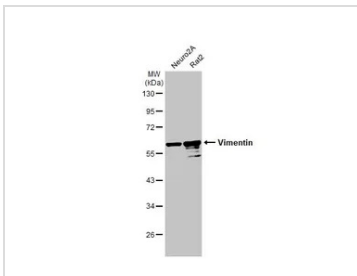
#### GTX100619 WB Image

Various whole cell extracts (30 µg) were separated by 10% SDS-PAGE, and the membrane was blotted with Vimentin antibody (GTX100619) diluted at 1:10000. The HRP-conjugated anti-rabbit IgG antibody (GTX213110-01) was used to detect the primary antibody.



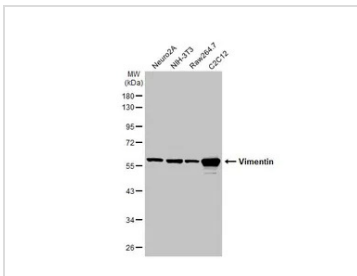
#### GTX100619 WB Image

Various extracts (30 µg) were separated by 10% SDS-PAGE, and the membrane was blotted with Vimentin antibody (GTX100619) diluted at 1:5000. The HRP-conjugated anti-rabbit IgG antibody (GTX213110-01) was used to detect the primary antibody.



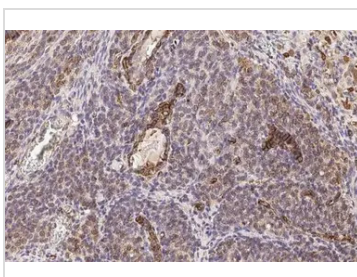
#### GTX100619 WB Image

Various whole cell extracts (30 µg) were separated by 10% SDS-PAGE, and the membrane was blotted with Vimentin antibody (GTX100619) diluted at 1:5000. The HRP-conjugated anti-rabbit IgG antibody (GTX213110-01) was used to detect the primary antibody.



#### GTX100619 WB Image

Various whole cell extracts (30 µg) were separated by 10% SDS-PAGE, and the membrane was blotted with Vimentin antibody (GTX100619) diluted at 1:5000. The HRP-conjugated anti-rabbit IgG antibody (GTX213110-01) was used to detect the primary antibody.



#### GTX100619 IHC-P Image

Vimentin antibody detects Vimentin protein at cell membrane and cytoplasm by immunohistochemical analysis.

Sample: Paraffin-embedded rat ovary.

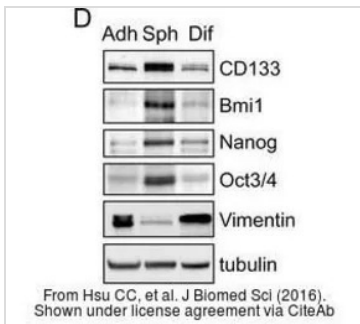
Vimentin stained by Vimentin antibody (GTX100619) diluted at 1:500.

Antigen Retrieval: Citrate buffer, pH 6.0, 15 min



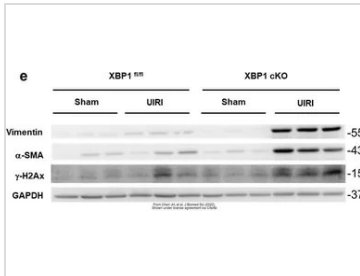
For full product information, images and publications, please visit our [website](https://www.genetex.com).





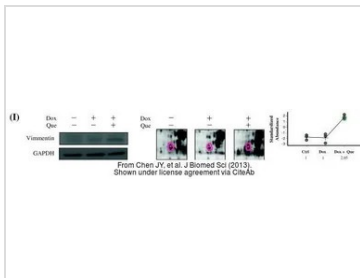
#### GTx100619 WB Image

The data was published in the journal J Biomed Sci in 2016. [PMID: 27863490](https://pubmed.ncbi.nlm.nih.gov/27863490/)



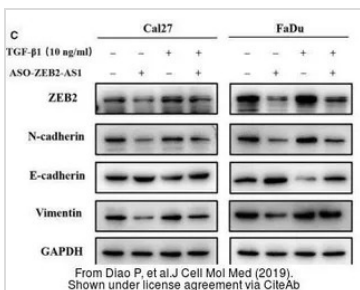
#### GTx100619 WB Image

The data was published in the 2022 in J Biomed Sci. [PMID: 35765067](https://pubmed.ncbi.nlm.nih.gov/35765067/)



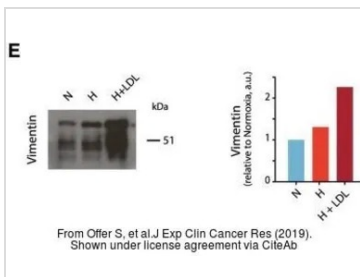
#### GTx100619 WB Image

The data was published in the journal J Biomed Sci in 2013. [PMID: 24359494](https://pubmed.ncbi.nlm.nih.gov/24359494/)



#### GTx100619 WB Image

The data was published in the journal J Cell Mol Med in 2019. [PMID: 30950191](https://pubmed.ncbi.nlm.nih.gov/30950191/)

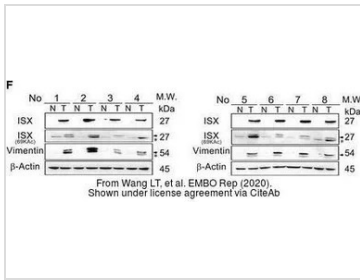


#### GTx100619 WB Image

The data was published in the journal J Exp Clin Cancer Res in 2019. [PMID: 31174567](https://pubmed.ncbi.nlm.nih.gov/31174567/)

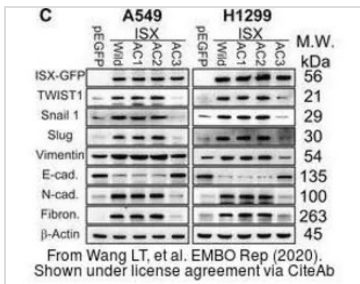


For full product information, images and publications, please visit our [website](https://www.genetex.com).



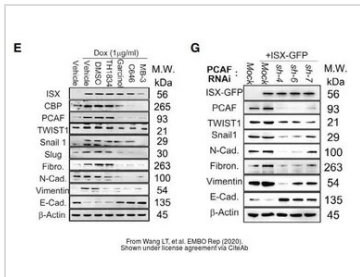
#### GTx100619 WB Image

The data was published in the journal EMBO Rep in 2020. [PMID: 31908141](#)



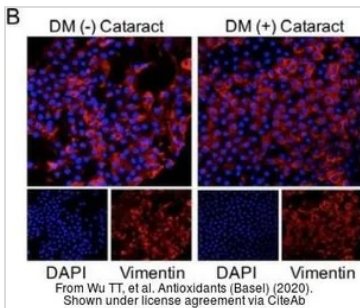
#### GTx100619 WB Image

The data was published in the journal EMBO Rep in 2020. [PMID: 31908141](#)



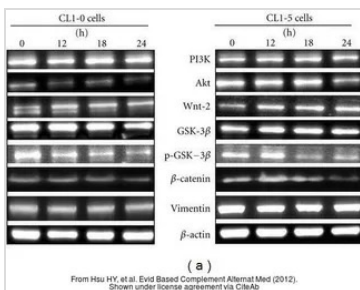
#### GTx100619 WB Image

The data was published in the journal EMBO Rep in 2020. [PMID: 31908141](#)



#### GTx100619 IHC Image

The data was published in the journal Antioxidants (Basel) in 2020. [PMID: 32218152](#)

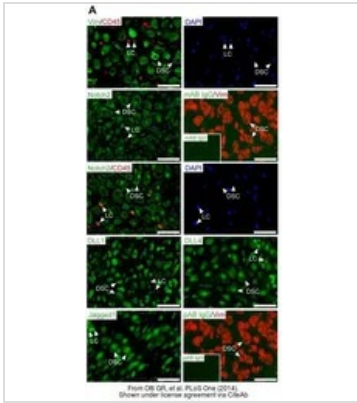


#### GTx100619 WB Image

The data was published in the journal Evid Based Complement Alternat Med in 2012. [PMID: 23320038](#)

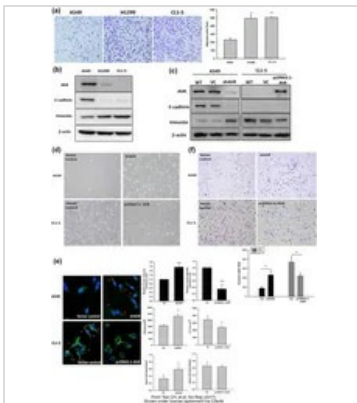


For full product information, images and publications, please visit our [website](#).



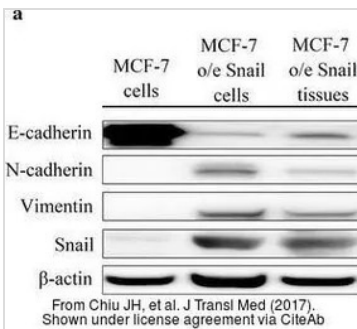
#### GTX100619 IHC-P Image

The data was published in the journal PLoS One in 2014. [PMID: 25397403](#)



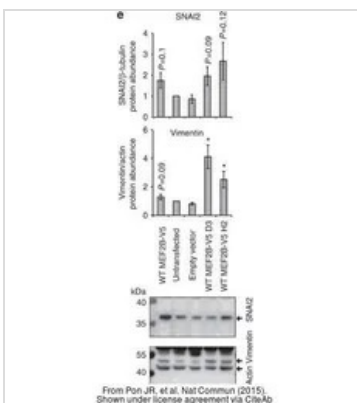
#### GTX100619 WB Image

The data was published in the journal Sci Rep in 2017. [PMID: 28195146](#)



#### GTX100619 WB Image

The data was published in the journal J Transl Med in 2017. [PMID: 28472954](#)

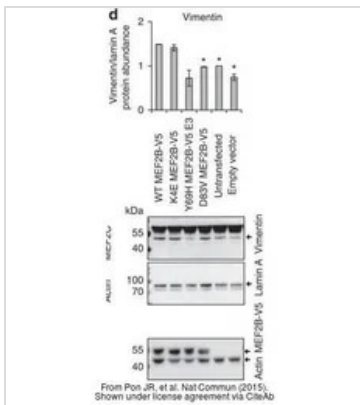


#### GTX100619 WB Image

The data was published in the journal Nat Commun in 2015. [PMID: 26245647](#)

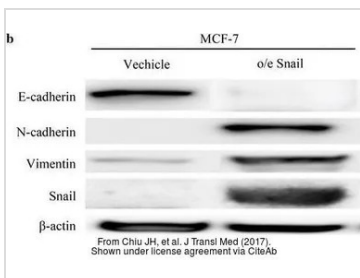


For full product information, images and publications, please visit our [website](#).



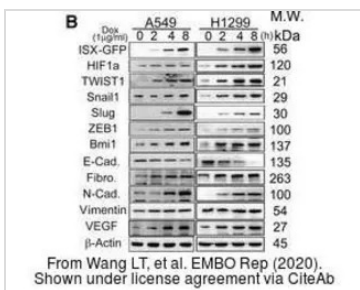
#### GTx100619 WB Image

The data was published in the journal Nat Commun in 2015. [PMID: 26245647](#)



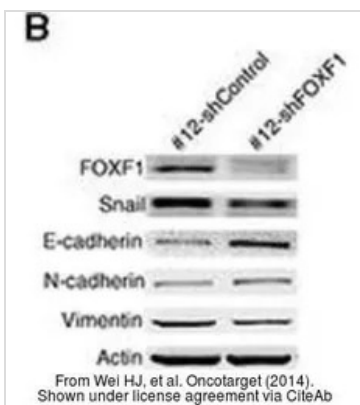
#### GTx100619 WB Image

The data was published in the journal J Transl Med in 2017. [PMID: 28472954](#)



#### GTx100619 WB Image

The data was published in the journal EMBO Rep in 2020. [PMID: 31908141](#)

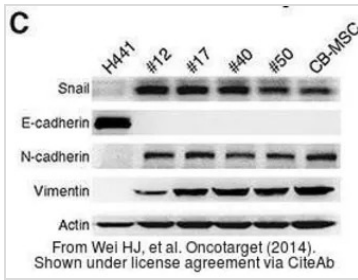


#### GTx100619 WB Image

The data was published in the journal Oncotarget in 2014. [PMID: 25237908](#)

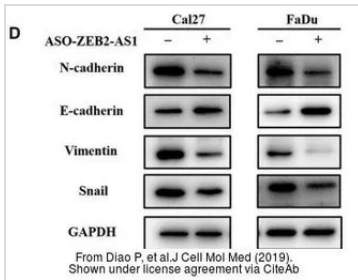


For full product information, images and publications, please visit our [website](#).



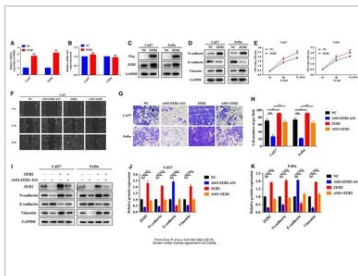
#### GTXT100619 WB Image

The data was published in the journal Oncotarget in 2014. [PMID: 25237908](#)



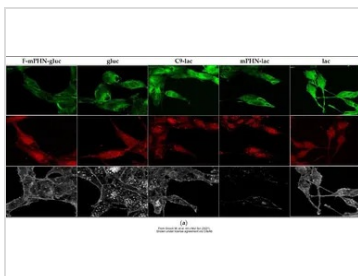
#### GTXT100619 WB Image

The data was published in the journal J Cell Mol Med in 2019. [PMID: 30950191](#)



#### GTXT100619 WB Image

The data was published in the journal J Cell Mol Med in 2019. [PMID: 30950191](#)



#### GTXT100619 ICC/IF Image

The data was published in the 2021 in Int J Mol Sci. [PMID: 34281292](#)



For full product information, images and publications, please visit our [website](#).

## Twist1/2 antibody

Cat. No. GTX127310

<b>Host</b>	Rabbit
<b>Clonality</b>	Polyclonal
<b>Isotype</b>	IgG
<b>Application</b>	WB, IHC-P, IHC
<b>Reactivity</b>	Human, Mouse, Rat, Drosophila

Reference ( 66 )

★★★★★ Review ( 12 )

Package

100 µl, 25 µl

## APPLICATION

## Application Note

\*Optimal dilutions/concentrations should be determined by the researcher.

Suggested dilution	Recommended dilution
WB	1:500-1:10000
IHC-P	1:100-1:1000
IHC	Assay dependent

Not tested in other applications.

Calculated MW 21 kDa. ( [Note](#) )

## PROPERTIES

<b>Form</b>	Liquid
<b>Buffer</b>	PBS, 20% Glycerol
<b>Preservative</b>	0.025% ProClin 300
<b>Storage</b>	Store as concentrated solution. Centrifuge briefly prior to opening vial. For short-term storage (1-2 weeks), store at 4°C. For long-term storage, aliquot and store at -20°C or below. Avoid multiple freeze-thaw cycles.
<b>Concentration</b>	0.67 mg/ml (Please refer to the vial label for the specific concentration.)
<b>Immunogen</b>	Recombinant protein encompassing a sequence within the center region of human Twist1/2. The exact sequence is proprietary.
<b>Purification</b>	Purified by antigen-affinity chromatography.
<b>Conjugation</b>	Unconjugated

## Note

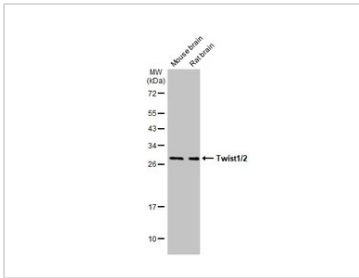
For laboratory research use only. Not for any clinical, therapeutic, or diagnostic use in humans or animals. Not for animal or human consumption.

Purchasers shall not, and agree not to enable third parties to, analyze, copy, reverse engineer or otherwise attempt to determine the structure or sequence of the product.

For full product information, images and publications, please visit our [website](#).

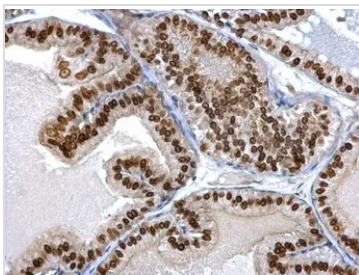


DATA IMAGES



**GTX127310 WB Image**

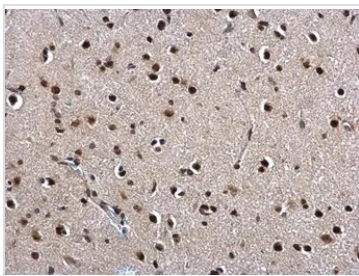
Various tissue extracts (50 µg) were separated by 12% SDS-PAGE, and the membrane was blotted with Twist1/2 antibody (GTX127310) diluted at 1:1000. The HRP-conjugated anti-rabbit IgG antibody (GTX213110-01) was used to detect the primary antibody.



**GTX127310 IHC-P Image**

Twist1/2 antibody detects Twist1/2 protein at nucleus on mouse prostate by immunohistochemical analysis.  
Sample: Paraffin-embedded mouse prostate.  
Twist1/2 antibody (GTX127310) dilution: 1:500.

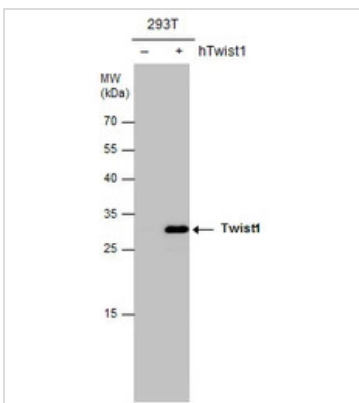
Antigen Retrieval: Trilogy™ (EDTA based, pH 8.0) buffer, 15min



**GTX127310 IHC-P Image**

Twist1/2 antibody detects Twist1/2 protein at nucleus on rat fore brain by immunohistochemical analysis.  
Sample: Paraffin-embedded rat fore brain.  
Twist1/2 antibody (GTX127310) dilution: 1:500.

Antigen Retrieval: Trilogy™ (EDTA based, pH 8.0) buffer, 15min

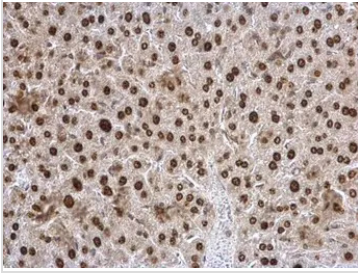


**GTX127310 WB Image**

Twist1/2 antibody detects Twist1 protein by western blot analysis. Non-transfected (-) and Twist1-transfected (+) 293T whole cell extracts (30 µg) were separated by 12% SDS-PAGE, and the membrane was blotted with Twist1/2 antibody (GTX127310) diluted at 1:5000. The HRP-conjugated anti-rabbit IgG antibody (GTX213110-01) was used to detect the primary antibody.



For full product information, images and publications, please visit our [website](https://www.genetex.com).



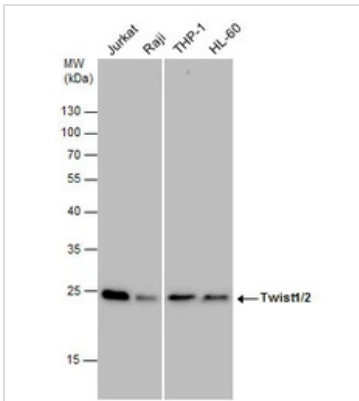
## GTX127310 IHC-P Image

Twist1/2 antibody detects Twist1/2 protein at nucleus on mouse liver by immunohistochemical analysis.

Sample: Paraffin-embedded mouse liver.

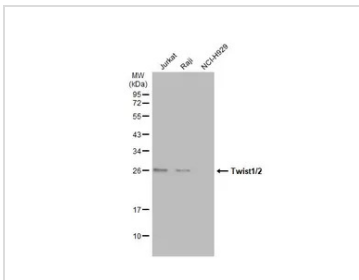
Twist1/2 antibody (GTX127310) dilution: 1:500.

Antigen Retrieval: Trilogy™ (EDTA based, pH 8.0) buffer, 15min



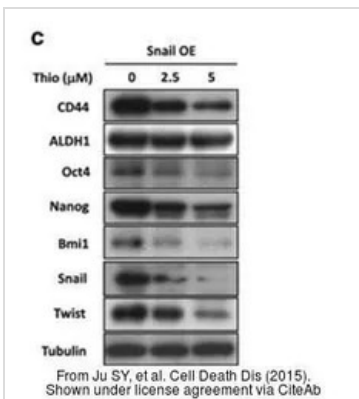
## GTX127310 WB Image

Twist1/2 antibody detects Twist1/2 protein by western blot analysis. Various whole cell extracts (30 µg) were separated by 12% SDS-PAGE, and the membrane was blotted with Twist1/2 antibody (GTX127310) diluted at 1:1000. The HRP-conjugated anti-rabbit IgG antibody (GTX213110-01) was used to detect the primary antibody.



## GTX127310 WB Image

Various whole cell extracts (30 µg) were separated by 12% SDS-PAGE, and the membrane was blotted with Twist1/2 antibody (GTX127310) diluted at 1:1000. The HRP-conjugated anti-rabbit IgG antibody (GTX213110-01) was used to detect the primary antibody.

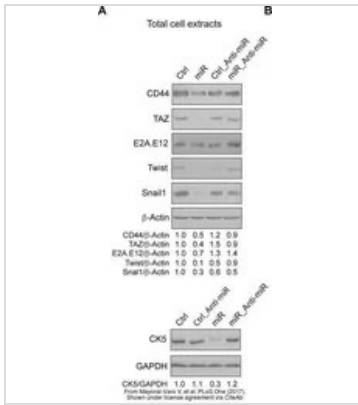


## GTX127310 WB Image

The data was published in the journal Cell Death Dis in 2015. [PMID: 26136074](https://pubmed.ncbi.nlm.nih.gov/26136074/)

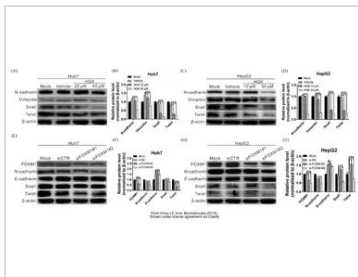


For full product information, images and publications, please visit our [website](https://www.genetex.com).



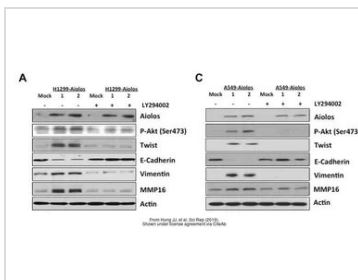
### GTx127310 WB Image

The data was published in the journal PLoS One in 2017. [PMID: 29182685](#)



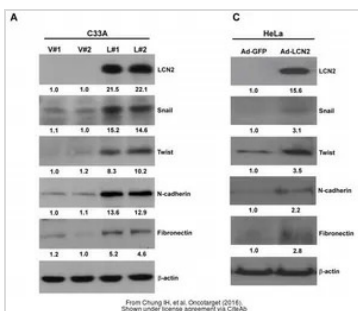
### GTx127310 WB Image

The data was published in the journal Biomolecules in 2019. [PMID: 31877715](#)



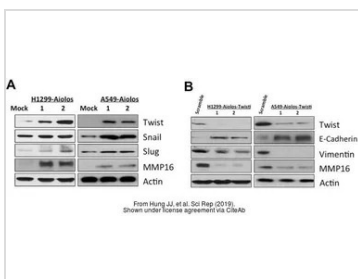
### GTx127310 WB Image

The data was published in the journal Sci Rep in 2019. [PMID: 30816208](#)



### GTx127310 WB Image

The data was published in the journal Oncotarget in 2016. [PMID: 26840566](#)

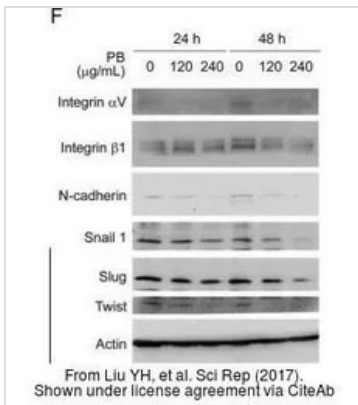


### GTx127310 WB Image

The data was published in the journal Sci Rep in 2019. [PMID: 30816208](#)

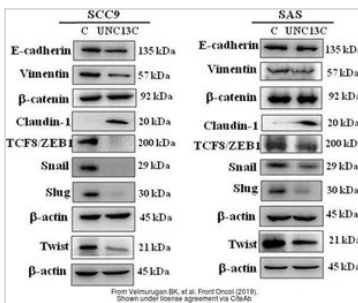


For full product information, images and publications, please visit our [website](#).



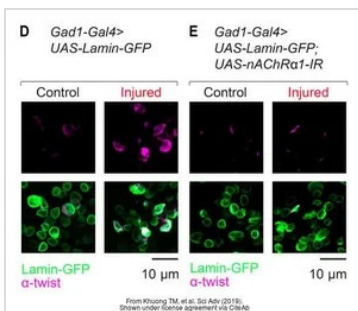
#### GTx127310 WB Image

The data was published in the journal Sci Rep in 2017. [PMID: 28134285](#)



#### GTx127310 WB Image

The data was published in the journal Front Oncol in 2019. [PMID: 31440468](#)



#### GTx127310 IHC Image

The data was published in the journal Sci Adv in 2019. [PMID: 31309148](#)



For full product information, images and publications, please visit our [website](#).

## Goat Anti-Rabbit IgG antibody (HRP)

Cat. No. GTX213110-01

Host	Goat
Clonality	Polyclonal
Isotype	IgG
Application	WB, IHC-P, ELISA
Reactivity	Rabbit

Reference ( 501 )

Package

1 ml

## APPLICATION

## Application Note

\*Optimal dilutions/concentrations should be determined by the researcher.

Suggested dilution	Recommended dilution
WB	Assay dependent
IHC-P	1:100-1:1000
ELISA	Assay dependent

Not tested in other applications.

## PROPERTIES

Form	Liquid
Buffer	0.05M Tris, 0.15M NaCl, 1%BSA
Preservative	0.025% ProClin 300
Storage	Store as concentrated solution. Centrifuge briefly prior to opening vial. For short-term storage (1-2 weeks), store at 4°C. For long-term storage, aliquot and store at -20°C or below. Avoid multiple freeze-thaw cycles.
Concentration	0.5 mg/ml (Please refer to the vial label for the specific concentration.)
Immunogen	Highly purified whole rabbit IgG
Purification	Purified by antigen-affinity chromatography.
Conjugation	Horseradish peroxidase(HRP)

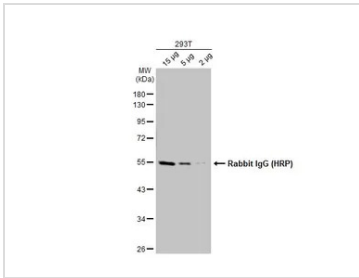
## Note

For laboratory research use only. Not for any clinical, therapeutic, or diagnostic use in humans or animals. Not for animal or human consumption.

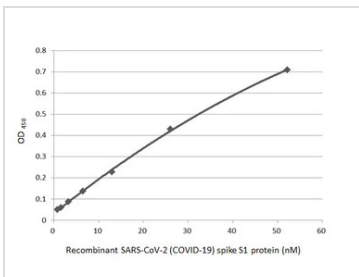
Purchasers shall not, and agree not to enable third parties to, analyze, copy, reverse engineer or otherwise attempt to determine the structure or sequence of the product.



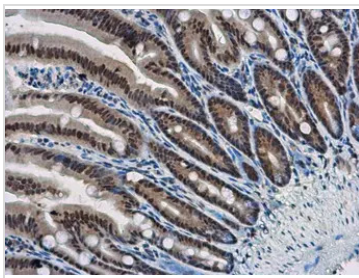
For full product information, images and publications, please visit our [website](#).

**DATA IMAGES**

**GTX213110-01 WB Image**

Various whole cell extracts were separated by 10% SDS-PAGE, and the membrane was blotted with Rabbit IgG antibody (HRP) (GTX213110-01) diluted at 1:10000.


**GTX213110-01 ELISA Image**

Indirect ELISA analysis performed by coating plate with recombinant SARS-CoV-2 (COVID-19) Spike S1 protein, His tag (active) (GTX135817-pro) (52.15-0.81 nM). Coated protein was probed with SARS-CoV-2 (COVID-19) Spike S1 antibody [HL134] (GTX635671) (1 µg/mL). Goat anti-rabbit IgG antibody (HRP) (GTX213110-01) (1:10000) was used to detect bound primary antibody.


**GTX213110-01 IHC-P Image**

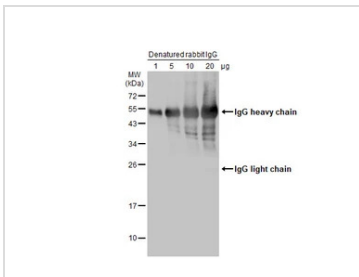
WBP11 antibody detects WBP11 protein at nucleus in mouse intestine by immunohistochemical analysis.

Sample: Paraffin-embedded mouse intestine.

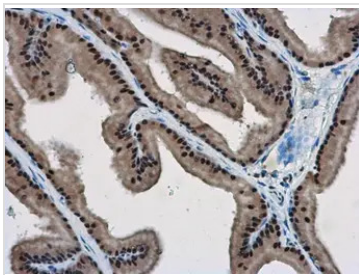
WBP11 antibody (GTX118654) diluted at 1:500.

The signal was developed by Rabbit IgG antibody (HRP) (GTX213110-01)

Antigen Retrieval: Citrate buffer, pH 6.0, 15 min


**GTX213110-01 WB Image**

Various amounts of denatured rabbit IgG protein were separated by 12% SDS-PAGE, and the membrane was blotted with HRP-conjugated anti-rabbit IgG antibody (GTX213110-01) diluted at 1:5000.


**GTX213110-01 IHC-P Image**

WBP11 antibody detects WBP11 protein at nucleus in rat prostate by immunohistochemical analysis.

Sample: Paraffin-embedded rat prostate.

WBP11 antibody (GTX118654) diluted at 1:500.

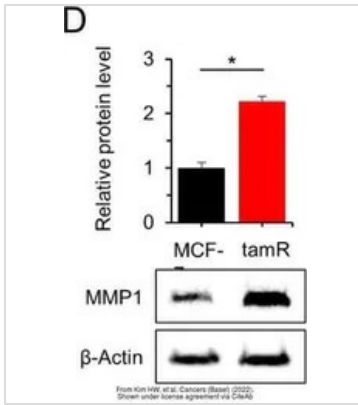
The signal was developed by Rabbit IgG antibody (HRP) (GTX213110-01).

Antigen Retrieval: Citrate buffer, pH 6.0, 15 min



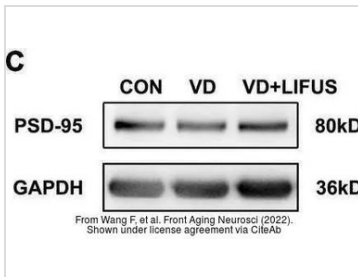
For full product information, images and publications, please visit our [website](https://www.genetex.com).





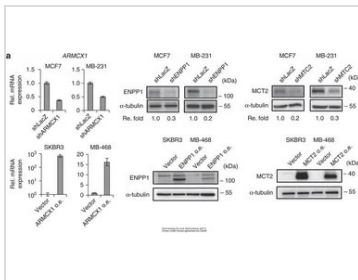
#### GTx213110-01 WB Image

The data was published in the 2022 in Cancers (Basel). [PMID: 35267540](#)



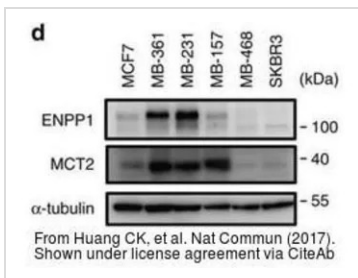
#### GTx213110-01 WB Image

The data was published in the 2022 in Front Aging Neurosci. [PMID: 35264943](#)



#### GTx213110-01 WB Image

The data was published in the 2017 in Nat Commun. [PMID: 28281525](#)

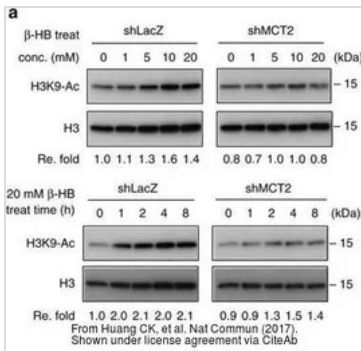


#### GTx213110-01 WB Image

The data was published in the 2017 in Nat Commun. [PMID: 28281525](#)

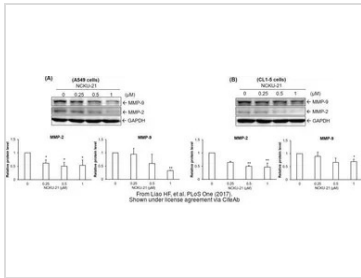


For full product information, images and publications, please visit our [website](#).



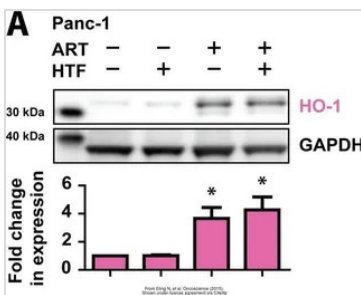
#### GTx213110-01 WB Image

The data was published in the 2017 in Nat Commun. [PMID: 28281525](#)



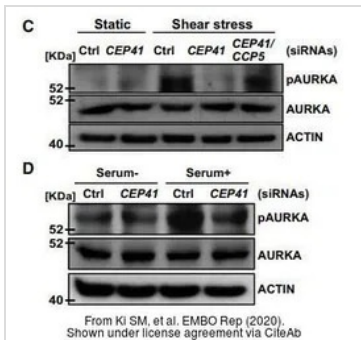
#### GTx213110-01 WB Image

The data was published in the journal PLoS One in 2017. [PMID: 28945763](#)



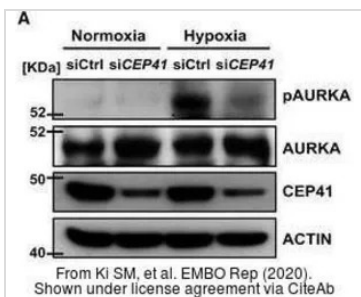
#### GTx213110-01 WB Image

The data was published in the journal Oncotarget in 2015. [PMID: 26097885](#)



#### GTx213110-01 WB Image

The data was published in the journal EMBO Rep in 2020. [PMID: 31885126](#)

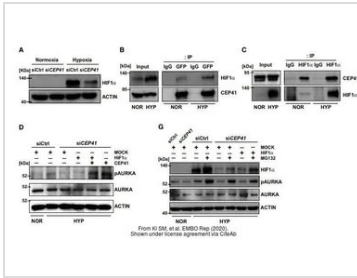


#### GTx213110-01 WB Image

The data was published in the journal EMBO Rep in 2020. [PMID: 31885126](#)

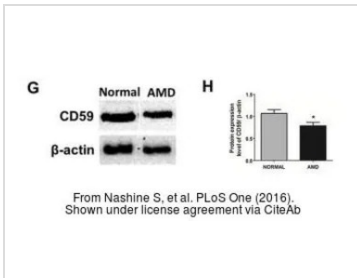


For full product information, images and publications, please visit our [website](#).



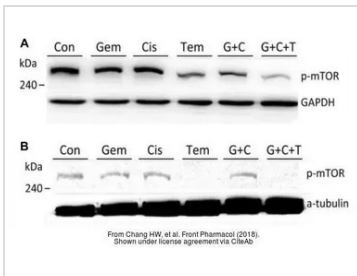
#### GTx213110-01 WB Image

The data was published in the journal EMBO Rep in 2020. [PMID: 31885126](#)



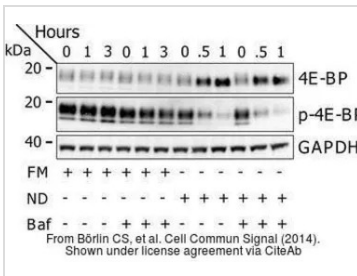
#### GTx213110-01 WB Image

The data was published in the 2016 in PLoS One. [PMID: 27486856](#)



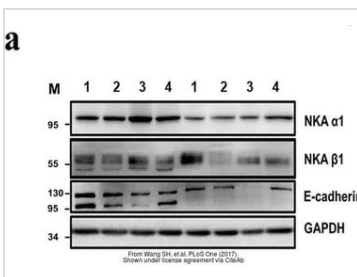
#### GTx213110-01 WB Image

The data was published in the journal Front Pharmacol in 2018. [PMID: 30087612](#)



#### GTx213110-01 WB Image

The data was published in the journal Cell Commun Signal in 2014. [PMID: 25214434](#)



#### GTx213110-01 WB Image

The data was published in the journal PLoS One in 2017. [PMID: 28832634](#)



For full product information, images and publications, please visit our [website](#).