

GTX300105

Antibody panel for autophagy elongation

Product Content

Cat No	Product Name	Reactivity	Applications	Package
GTX124181	ATG12 antibody	Human, Mouse, Rat	WB, ICC/IF, IHC-P, IP	25 µl
GTX129098	ATG16L1 antibody	Human, Mouse, Rat	ICC/IF, IHC-P	25 µl
GTX213110-01	Goat Anti-Rabbit IgG antibody (HRP)	Rabbit	WB, IHC-P, ELISA	25 µl
GTX639686	LC3B antibody [HL2798]	Human, Mouse, Rat, Zebrafish	WB, ICC/IF, IHC-P	25 µl

Note

For In vitro laboratory use only. Not for any clinical, therapeutic, or diagnostic use in humans or animals. Not for animal or human consumption.



For full product information, images and publications, please visit our [website](#).

ATG12 antibody

Cat. No. GTX124181

Host	Rabbit
Clonality	Polyclonal
Isotype	IgG
Applications	WB, ICC/IF, IHC-P, IP
Reactivity	Human, Mouse, Rat

References (16)
 Package
 100 µl, 25 µl

Applications

Application Note

*Optimal dilutions/concentrations should be determined by the researcher.

Suggested dilution	Recommended dilution
WB	1:500-1:3000
ICC/IF	Assay dependent
IHC-P	1:100-1:1000
IP	1:100-1:500

Not tested in other applications.

Calculated MW 15 kDa. ([Note](#))

Properties

Form	Liquid
Buffer	PBS, 20% Glycerol
Preservative	0.025% ProClin 300
Storage	Store as concentrated solution. Centrifuge briefly prior to opening vial. For short-term storage (1-2 weeks), store at 4°C. For long-term storage, aliquot and store at -20°C or below. Avoid multiple freeze-thaw cycles.
Concentration	1.43 mg/ml (Please refer to the vial label for the specific concentration.)
Immunogen	Recombinant protein encompassing a sequence within the center region of human ATG12. The exact sequence is proprietary.
Purification	Purified by antigen-affinity chromatography.
Conjugation	Unconjugated



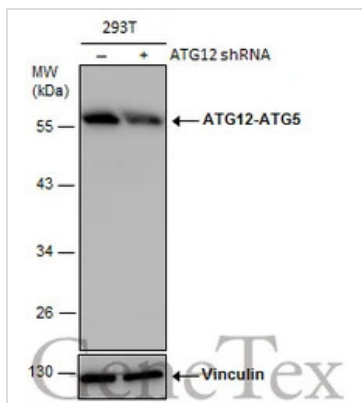
For full product information, images and publications, please visit our [website](#).

For laboratory research use only. Not for any clinical, therapeutic, or diagnostic use in humans or animals. Not for animal or human consumption.

Note

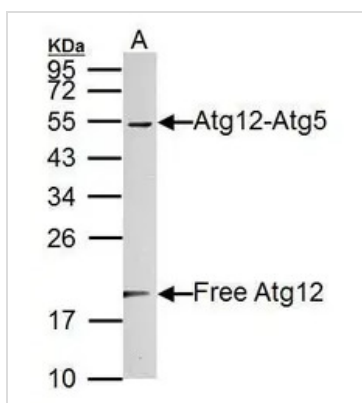
Purchasers shall not, and agree not to enable third parties to, analyze, copy, reverse engineer or otherwise attempt to determine the structure or sequence of the product.

DATA IMAGES



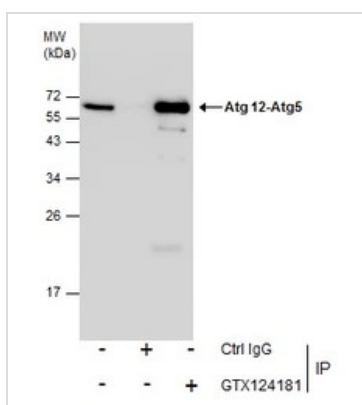
GTX124181 WB Image

Non-transfected (-) and transfected (+) 293T whole cell extracts (30 µg) were separated by 10% SDS-PAGE, and the membrane was blotted with ATG12 antibody (GTX124181) diluted at 1:500. The HRP-conjugated anti-rabbit IgG antibody (GTX213110-01) was used to detect the primary antibody.



GTX124181 WB Image

Sample (30 µg of whole cell lysate)
 A: NIH-3T3
 12% SDS PAGE
 GTX124181 diluted at 1:1000
 The HRP-conjugated anti-rabbit IgG antibody (GTX213110-01) was used to detect the primary antibody.

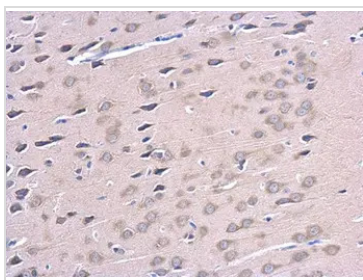


GTX124181 IP Image

Immunoprecipitation of Atg 12-Atg5 protein from 293T whole cell extracts using 5 µg of ATG12 antibody (GTX124181).
 Western blot analysis was performed using ATG12 antibody (GTX124181) diluted at 1:1000.
 EasyBlot anti-Rabbit IgG (GTX221666-01) was used as a secondary reagent.



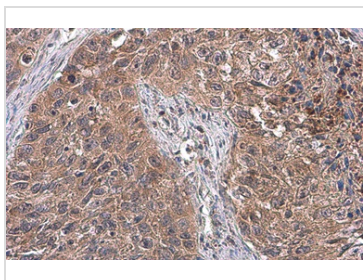
For full product information, images and publications, please visit our [website](#).



GTX124181 IHC-P Image

ATG12 antibody detects ATG12 protein at cytoplasm in rat brain by immunohistochemical analysis.
 Sample: Paraffin-embedded rat brain.
 ATG12 antibody (GTX124181) diluted at 1:500.

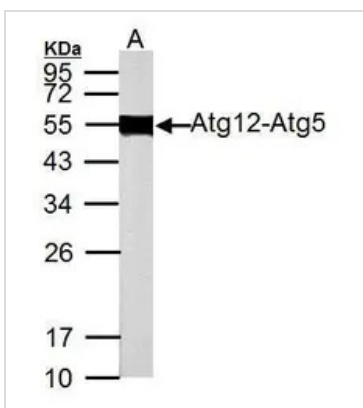
Antigen Retrieval: Citrate buffer, pH 6.0, 15 min



GTX124181 IHC-P Image

ATG12 antibody detects ATG12 protein at cytoplasm by immunohistochemical analysis.
 Sample: Paraffin-embedded human lung cancer.
 ATG12 stained by ATG12 antibody (GTX124181) diluted at 1:500.

Antigen Retrieval: Citrate buffer, pH 6.0, 15 min



GTX124181 WB Image

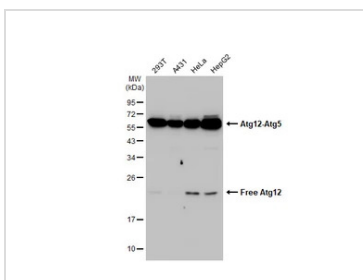
Sample (50 µg of whole cell lysate)

A: Rat brain

12% SDS PAGE

GTX124181 diluted at 1:1000

The HRP-conjugated anti-rabbit IgG antibody (GTX213110-01) was used to detect the primary antibody.

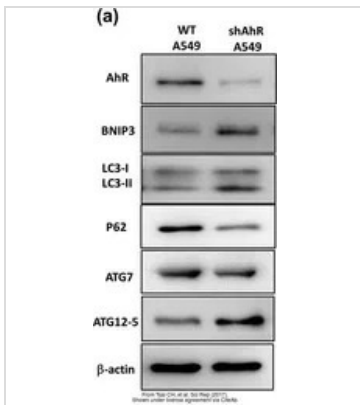


GTX124181 WB Image

Various whole cell extracts (30 µg) were separated by 12% SDS-PAGE, and the membrane was blotted with ATG12 antibody (GTX124181) diluted at 1:1000. The HRP-conjugated anti-rabbit IgG antibody (GTX213110-01) was used to detect the primary antibody.

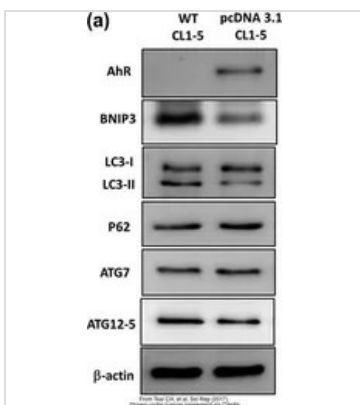


For full product information, images and publications, please visit our [website](#).



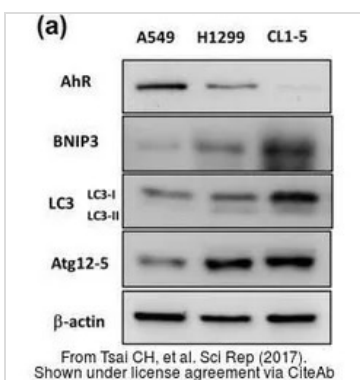
GTX124181 WB Image

The data was published in the journal Sci Rep in 2017. [PMID: 28195146](https://pubmed.ncbi.nlm.nih.gov/28195146/)



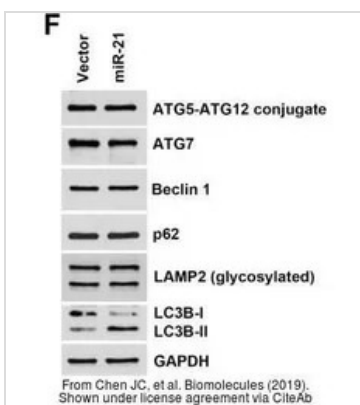
GTX124181 WB Image

The data was published in the journal Sci Rep in 2017. [PMID: 28195146](https://pubmed.ncbi.nlm.nih.gov/28195146/)



GTX124181 WB Image

The data was published in the journal Sci Rep in 2017. [PMID: 28195146](https://pubmed.ncbi.nlm.nih.gov/28195146/)

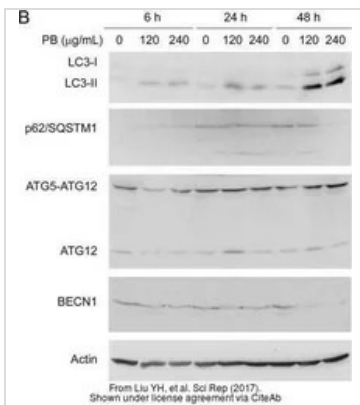


GTX124181 WB Image

The data was published in the journal Biomolecules in 2019. [PMID: 31505885](https://pubmed.ncbi.nlm.nih.gov/31505885/)



For full product information, images and publications, please visit our [website](https://www.genetex.com).


GTX124181 WB Image

The data was published in the journal Sci Rep in 2017. [PMID: 28134285](https://pubmed.ncbi.nlm.nih.gov/28134285/)



For full product information, images and publications, please visit our [website](#).

ATG16L1 antibody

Cat. No. GTX129098

Host	Rabbit
Clonality	Polyclonal
Isotype	IgG
Applications	ICC/IF, IHC-P
Reactivity	Human, Mouse, Rat

References (2)

Package

100 µl, 25 µl

Applications

Application Note

*Optimal dilutions/concentrations should be determined by the researcher.

Suggested dilution	Recommended dilution
ICC/IF	1:100-1:1000
IHC-P	1:100-1:1000

Not tested in other applications.

Properties

Form	Liquid
Buffer	PBS, 20% Glycerol
Preservative	0.025% ProClin 300
Storage	Store as concentrated solution. Centrifuge briefly prior to opening vial. For short-term storage (1-2 weeks), store at 4°C. For long-term storage, aliquot and store at -20°C or below. Avoid multiple freeze-thaw cycles.
Concentration	1 mg/ml (Please refer to the vial label for the specific concentration.)
Immunogen	Recombinant protein encompassing a sequence within the center region of human ATG16L1. The exact sequence is proprietary.
Purification	Purified by antigen-affinity chromatography.
Conjugation	Unconjugated

Note

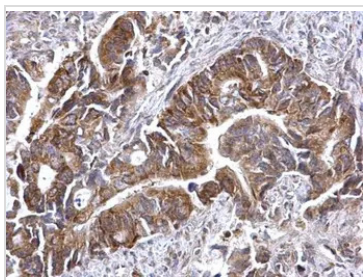
For laboratory research use only. Not for any clinical, therapeutic, or diagnostic use in humans or animals. Not for animal or human consumption.

Purchasers shall not, and agree not to enable third parties to, analyze, copy, reverse engineer or otherwise attempt to determine the structure or sequence of the product.



For full product information, images and publications, please visit our [website](#).

DATA IMAGES

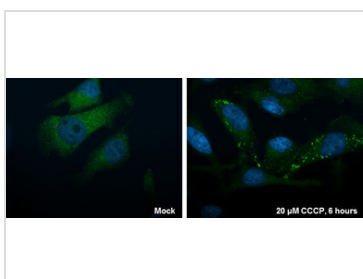
**GTX129098 IHC-P Image**

ATG16L1 antibody detects ATG16L1 protein at cytosol on human colon carcinoma by immunohistochemical analysis.

Sample: Paraffin-embedded human colon carcinoma.

ATG16L1 antibody (GTX129098) dilution: 1:500.

Antigen Retrieval: Trilogy™ (EDTA based, pH 8.0) buffer, 15min

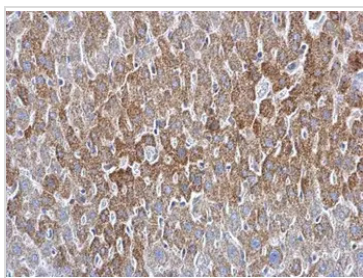
**GTX129098 ICC/IF Image**

ATG16L1 antibody detects ATG16L1 protein at autophagosome by immunofluorescent analysis.

Sample: HeLa cells were fixed in ice-cold MeOH for 5 min.

Green: ATG16L1 protein stained by ATG16L1 antibody (GTX129098) diluted at 1:200.

Blue: Hoechst 33342 staining.

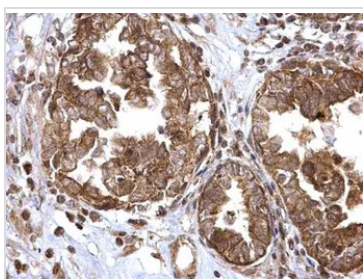
**GTX129098 IHC-P Image**

ATG16L1 antibody detects ATG16L1 protein at cytosol on mouse liver by immunohistochemical analysis.

Sample: Paraffin-embedded mouse liver.

ATG16L1 antibody (GTX129098) dilution: 1:500.

Antigen Retrieval: Trilogy™ (EDTA based, pH 8.0) buffer, 15min

**GTX129098 IHC-P Image**

ATG16L1 antibody detects ATG16L1 protein at cytosol on human ovarian carcinoma by immunohistochemical analysis.

Sample: Paraffin-embedded human ovarian carcinoma.

ATG16L1 antibody (GTX129098) dilution: 1:500.

Antigen Retrieval: Trilogy™ (EDTA based, pH 8.0) buffer, 15min



For full product information, images and publications, please visit our [website](#).

Goat Anti-Rabbit IgG antibody (HRP)

Cat. No. GTX213110-01

Host	Goat
Clonality	Polyclonal
Isotype	IgG
Applications	WB, IHC-P, ELISA
Reactivity	Rabbit

References (638)

Package

1 ml

Applications

Application Note

*Optimal dilutions/concentrations should be determined by the researcher.

Suggested dilution	Recommended dilution
WB	1:5000-1:20000
IHC-P	1:100-1:1000
ELISA	1:5000-1:20000

Not tested in other applications.

Properties

Form	Liquid
Buffer	0.05M Tris, 0.15M NaCl
Preservative	0.025% ProClin 300
Storage	Store as concentrated solution. Centrifuge briefly prior to opening vial. For short-term storage (1-2 weeks), store at 4°C. For long-term storage, aliquot and store at -20°C or below. Avoid multiple freeze-thaw cycles.
Concentration	0.2 mg/ml (Please refer to the vial label for the specific concentration.)
Immunogen	Highly purified whole rabbit IgG
Purification	Purified by antigen-affinity chromatography.
Conjugation	Horseradish peroxidase(HRP)

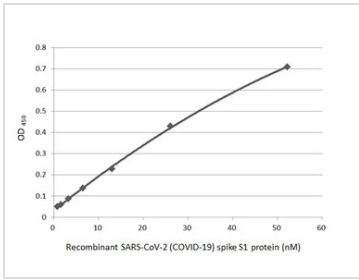
Note

For laboratory research use only. Not for any clinical, therapeutic, or diagnostic use in humans or animals. Not for animal or human consumption.

Purchasers shall not, and agree not to enable third parties to, analyze, copy, reverse engineer or otherwise attempt to determine the structure or sequence of the product.

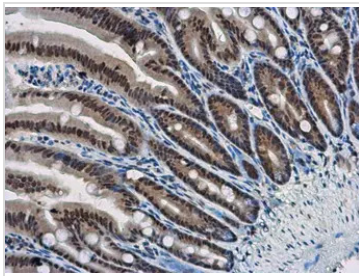
For full product information, images and publications, please visit our [website](#).

DATA IMAGES



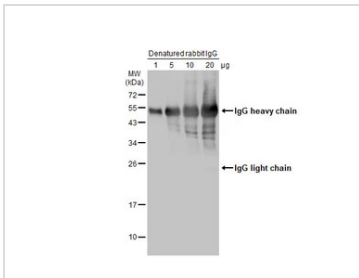
GTX213110-01 ELISA Image

Indirect ELISA analysis performed by coating plate with recombinant SARS-CoV-2 (COVID-19) Spike S1 protein, His tag (active) (GTX135817-pro) (52.15-0.81 nM). Coated protein was probed with SARS-CoV-2 (COVID-19) Spike S1 antibody [HL134] (GTX635671) (1 µg/mL). Goat anti-rabbit IgG antibody (HRP) (GTX213110-01) (1:10000) was used to detect bound primary antibody.



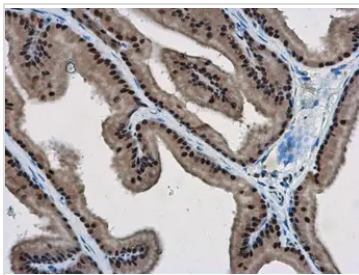
GTX213110-01 IHC-P Image

WBP11 antibody detects WBP11 protein at nucleus in mouse intestine by immunohistochemical analysis. Sample: Paraffin-embedded mouse intestine. WBP11 antibody (GTX118654) diluted at 1:500. The signal was developed by Rabbit IgG antibody (HRP) (GTX213110-01) Antigen Retrieval: Citrate buffer, pH 6.0, 15 min



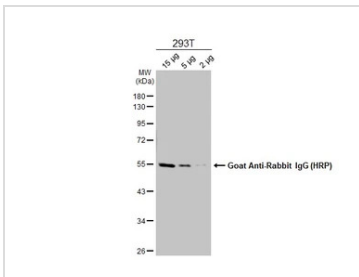
GTX213110-01 WB Image

Various amounts of denatured rabbit IgG protein were separated by 12% SDS-PAGE, and the membrane was blotted with HRP-conjugated anti-rabbit IgG antibody (GTX213110-01) diluted at 1:5000.



GTX213110-01 IHC-P Image

WBP11 antibody detects WBP11 protein at nucleus in rat prostate by immunohistochemical analysis. Sample: Paraffin-embedded rat prostate. WBP11 antibody (GTX118654) diluted at 1:500. The signal was developed by Rabbit IgG antibody (HRP) (GTX213110-01). Antigen Retrieval: Citrate buffer, pH 6.0, 15 min

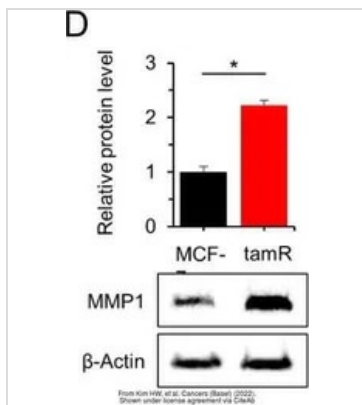


GTX213110-01 WB Image

Various whole cell extracts were separated by 10% SDS-PAGE, and the membrane was blotted with alpha Tubulin antibody (GTX112141) diluted at 1:10000. The HRP-conjugated anti-rabbit IgG antibody (GTX213110-01) was used to detect the primary antibody.

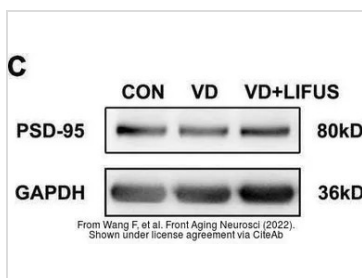


For full product information, images and publications, please visit our [website](#).



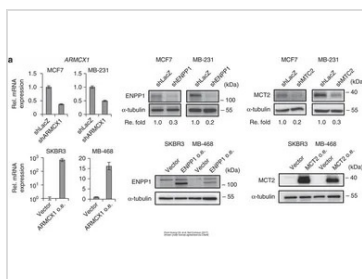
GTx213110-01 WB Image

The data was published in the 2022 in Cancers (Basel). [PMID: 35267540](https://pubmed.ncbi.nlm.nih.gov/35267540/)



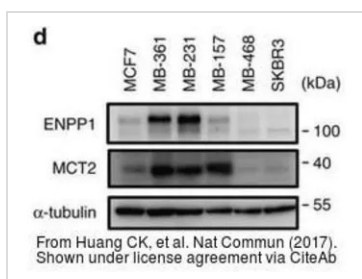
GTx213110-01 WB Image

The data was published in the 2022 in Front Aging Neurosci. [PMID: 35264943](https://pubmed.ncbi.nlm.nih.gov/35264943/)



GTx213110-01 WB Image

The data was published in the 2017 in Nat Commun. [PMID: 28281525](https://pubmed.ncbi.nlm.nih.gov/28281525/)

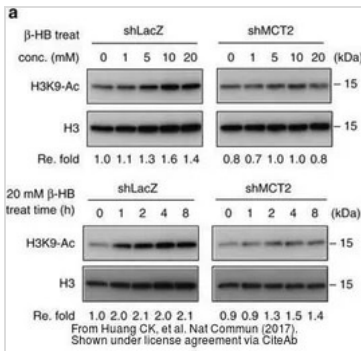


GTx213110-01 WB Image

The data was published in the 2017 in Nat Commun. [PMID: 28281525](https://pubmed.ncbi.nlm.nih.gov/28281525/)

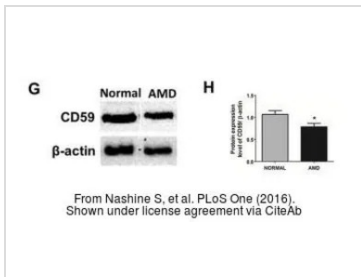


For full product information, images and publications, please visit our [website](https://www.genetex.com).



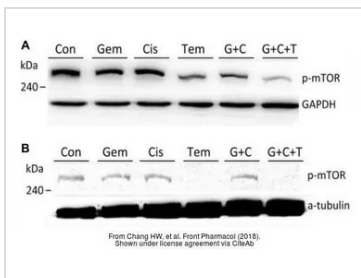
GTx213110-01 WB Image

The data was published in the 2017 in Nat Commun. [PMID: 28281525](https://pubmed.ncbi.nlm.nih.gov/28281525/)



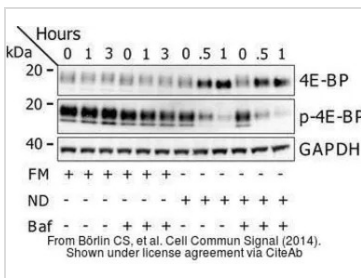
GTx213110-01 WB Image

The data was published in the 2016 in PLoS One. [PMID: 27486856](https://pubmed.ncbi.nlm.nih.gov/27486856/)



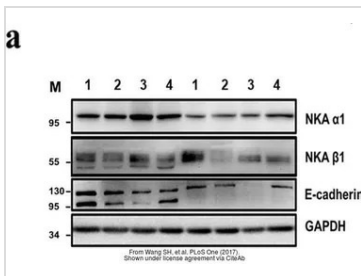
GTx213110-01 WB Image

The data was published in the journal Front Pharmacol in 2018. [PMID: 30087612](https://pubmed.ncbi.nlm.nih.gov/30087612/)



GTx213110-01 WB Image

The data was published in the journal Cell Commun Signal in 2014. [PMID: 25214434](https://pubmed.ncbi.nlm.nih.gov/25214434/)

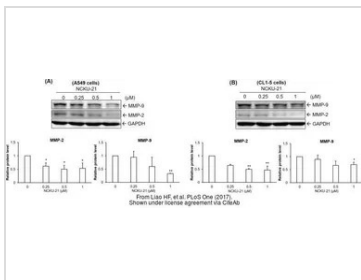


GTx213110-01 WB Image

The data was published in the journal PLoS One in 2017. [PMID: 28832634](https://pubmed.ncbi.nlm.nih.gov/28832634/)

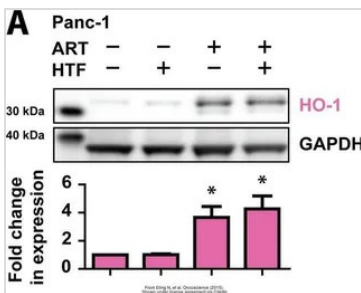


For full product information, images and publications, please visit our [website](http://www.genetex.com).



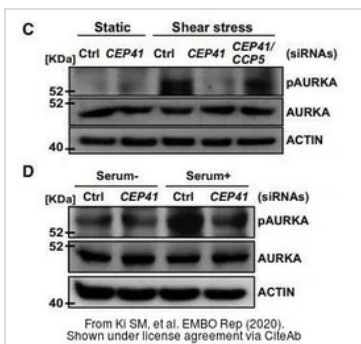
GTX213110-01 WB Image

The data was published in the journal PLoS One in 2017. [PMID: 28945763](https://pubmed.ncbi.nlm.nih.gov/28945763/)



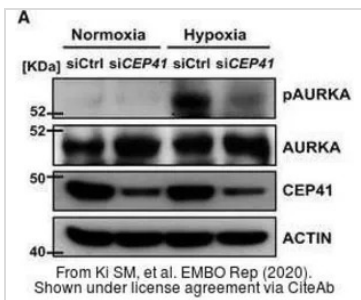
GTX213110-01 WB Image

The data was published in the journal Oncoscience in 2015. [PMID: 26097885](https://pubmed.ncbi.nlm.nih.gov/26097885/)



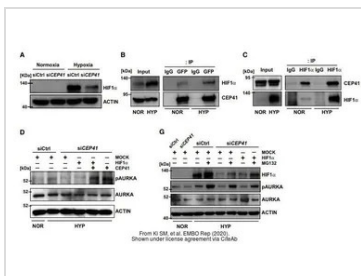
GTX213110-01 WB Image

The data was published in the journal EMBO Rep in 2020. [PMID: 31885126](https://pubmed.ncbi.nlm.nih.gov/31885126/)



GTX213110-01 WB Image

The data was published in the journal EMBO Rep in 2020. [PMID: 31885126](https://pubmed.ncbi.nlm.nih.gov/31885126/)



GTX213110-01 WB Image

The data was published in the journal EMBO Rep in 2020. [PMID: 31885126](https://pubmed.ncbi.nlm.nih.gov/31885126/)



For full product information, images and publications, please visit our [website](https://www.genetex.com).

LC3B antibody [HL2798]

Cat. No. GTX639686

Host	Rabbit
Clonality	Monoclonal
Isotype	IgG
Applications	WB, ICC/IF, IHC-P
Reactivity	Human, Mouse, Rat, Zebrafish

Package
100 µl, 25 µl

Applications

Application Note

*Optimal dilutions/concentrations should be determined by the researcher.

Suggested dilution	Recommended dilution
WB	1:500-1:3000
ICC/IF	Assay dependent
IHC-P	Assay dependent

Not tested in other applications.

Observed MW (kDa) 16 (LC3BI), 14 (LC3BII, autophagosome marker) kDa.

Properties

Form	Liquid
Buffer	PBS
Preservative	No preservatives
Storage	Store as concentrated solution. Centrifuge briefly prior to opening vial. For short-term storage (1-2 weeks), store at 4°C. For long-term storage, aliquot and store at -20°C or below. Avoid multiple freeze-thaw cycles.
Concentration	1 mg/ml (Please refer to the vial label for the specific concentration.)
Immunogen	Synthetic peptide of human LC3B.
Purification	Affinity purified by Protein A.
Conjugation	Unconjugated

Note

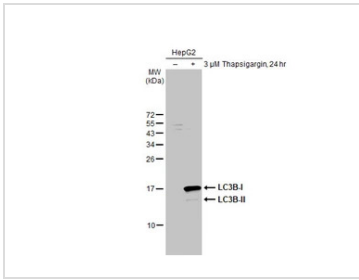
For laboratory research use only. Not for any clinical, therapeutic, or diagnostic use in humans or animals. Not for animal or human consumption.

Purchasers shall not, and agree not to enable third parties to, analyze, copy, reverse engineer or otherwise attempt to determine the structure or sequence of the product.



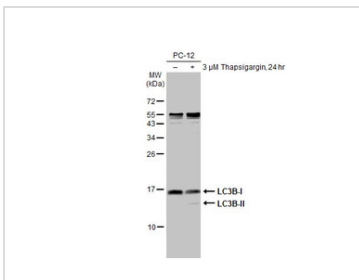
For full product information, images and publications, please visit our [website](#).

DATA IMAGES



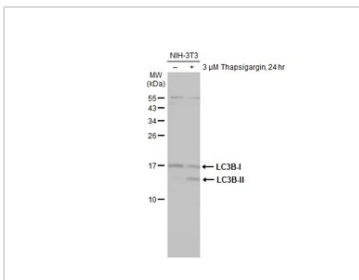
GTX639686 WB Image

Untreated (-) and treated (+) HepG2 whole cell extracts (30 μg) were separated by 15% SDS-PAGE, and the membrane was blotted with LC3B antibody [HL2798] (GTX639686) diluted at 1:1000. The HRP-conjugated anti-rabbit IgG antibody (GTX213110-01) was used to detect the primary antibody.



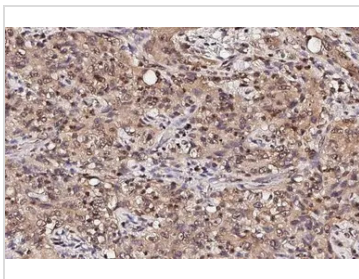
GTX639686 WB Image

Untreated (-) and treated (+) PC-12 whole cell extracts (30 μg) were separated by 15% SDS-PAGE, and the membrane was blotted with LC3B antibody [HL2798] (GTX639686) diluted at 1:1000. The HRP-conjugated anti-rabbit IgG antibody (GTX213110-01) was used to detect the primary antibody.



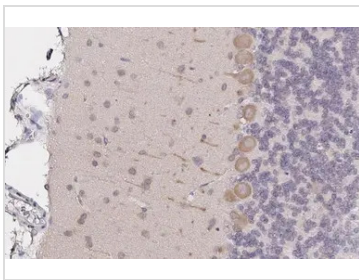
GTX639686 WB Image

Untreated (-) and treated (+) NIH-3T3 whole cell extracts (30 μg) were separated by 15% SDS-PAGE, and the membrane was blotted with LC3B antibody [HL2798] (GTX639686) diluted at 1:1000. The HRP-conjugated anti-rabbit IgG antibody (GTX213110-01) was used to detect the primary antibody.



GTX639686 IHC-P Image

LC3B antibody [HL2798] detects LC3B protein at cytoplasm by immunohistochemical analysis.
 Sample: Paraffin-embedded human lung cancer.
 LC3B stained by LC3B antibody [HL2798] (GTX639686) diluted at 1:100.
 Antigen Retrieval: Citrate buffer, pH 6.0, 15 min

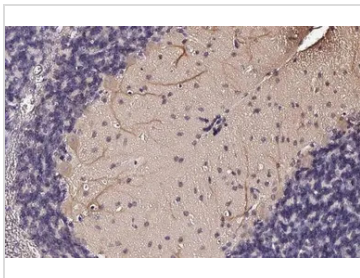


GTX639686 IHC-P Image

LC3B antibody [HL2798] detects LC3B protein at cytoplasm by immunohistochemical analysis.
 Sample: Paraffin-embedded rat cerebellum.
 LC3B stained by LC3B antibody [HL2798] (GTX639686) diluted at 1:100.
 Antigen Retrieval: Citrate buffer, pH 6.0, 15 min

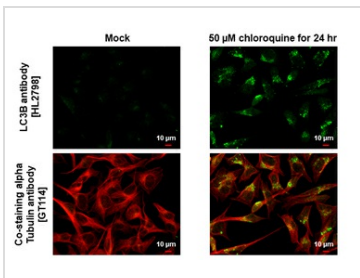


For full product information, images and publications, please visit our [website](#).



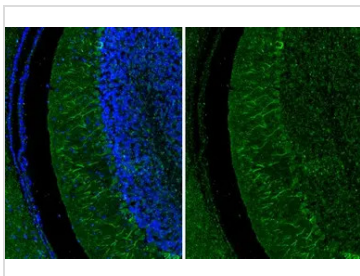
GTX639686 IHC-P Image

LC3B antibody [HL2798] detects LC3B protein at cytoplasm by immunohistochemical analysis.
 Sample: Paraffin-embedded mouse cerebellum.
 LC3B stained by LC3B antibody [HL2798] (GTX639686) diluted at 1:100.
 Antigen Retrieval: Citrate buffer, pH 6.0, 15 min



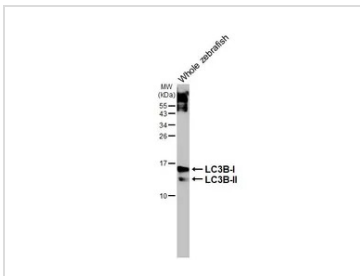
GTX639686 ICC/IF Image

LC3B antibody [HL2798] detects LC3B protein at autophagosome weak by immunofluorescent analysis.
 Sample: Mock and treated HeLa cells were fixed in ice-cold MeOH for 5 min.
 Green: LC3B stained by LC3B antibody [HL2798] (GTX639686) diluted at 1:1500.
 Red: alpha Tubulin, a cytoskeleton marker, stained by alpha Tubulin antibody [GT114] (GTX628802) diluted at 1:1000.



GTX639686 IHC-P Image

LC3B antibody [HL2798] detects LC3B protein at cytoplasm by immunohistochemical analysis.
 Sample: Paraffin-embedded human cerebellum.
 Green: LC3B stained by LC3B antibody [HL2798] (GTX639686) diluted at 1:100.
 Blue: Fluoroshield with DAPI (GTX30920).
 Antigen Retrieval: Citrate buffer, pH 6.0, 15 min



GTX639686 WB Image

Whole cell extract (30 μg) was separated by 15% SDS-PAGE, and the membrane was blotted with LC3B antibody [HL2798] (GTX639686) diluted at 1:1000. The HRP-conjugated anti-rabbit IgG antibody (GTX213110-01) was used to detect the primary antibody, and the signal was developed with Trident femto Western HRP Substrate.



For full product information, images and publications, please visit our [website](#).