

GTX300111

EasyBlot Sampler Kit

Product Content

Cat No	Product Name	Reactivity	Applications	Package
GTX221666-01	EasyBlot anti Rabbit IgG (HRP)	Rabbit	WB	10 µl
GTX221667-01	EasyBlot anti Mouse IgG (HRP)	Mouse	WB	10 µl
GTX425858	EasyBlocker		WB	2 g

Note

For In vitro laboratory use only. Not for any clinical, therapeutic, or diagnostic use in humans or animals. Not for animal or human consumption.



For full product information, images and publications, please visit our [website](#).

EasyBlot anti Rabbit IgG (HRP)

Cat. No. GTX221666-01

Host	Mouse
Clonality	Monoclonal
Isotype	IgG1
Applications	WB
Reactivity	Rabbit

References (61)

★★★★★ Review (1)

Package

250 µl, 50 µl

PRODUCT

Summary

EasyBlot anti-Rabbit IgG is an HRP-conjugated second step reagent that specifically reacts with the native, non-reduced form of rabbit IgG and does not bind the reduced, denatured form. Using Easyblot decreases the interference caused by the heavy (~50 kDa) and light chains (~25 kDa) of the IgG used for immunoprecipitation (IP). EasyBlot is simple to use and results in Western Blot detection of only the target band in your IP experiments. Exercise caution when using Protein A/G for IP with EasyBlot. Protein A/G contaminants bind to rabbit IgG with high affinity and may cause contaminating bands with a molecular weight similar to IgG heavy chain or light chain.

To minimize background from Protein A/G contamination, we strongly recommend the use of EasyBlot Kit anti-Rabbit IgG (Optimized for Prot A/G) (GTXGTX225856-01) or EasyBlocker (GTX425858) to minimize protein A/G contamination or you can use anti-Rabbit IgG Agarose beads (GTX27019) instead of Protein A/G.

Applications

Application Note

*Optimal dilutions/concentrations should be determined by the researcher.

Suggested dilution Recommended dilution

WB 1:1000

Note : Use 2-5 µg of the IP antibody; do not exceed 5 µg. Completely reduce all IP samples by 100mM DTT (fresh prepared). For further detail, please refer to the protocol.

Not tested in other applications.

Properties

Form	Liquid
Buffer	0.05M Tris, 0.15M NaCl, 1%BSA, 40% Glycerol
Preservative	0.005% Thimerosal
Storage	Store as concentrated solution. Centrifuge briefly prior to opening vial. For short-term storage (1-2 weeks), store at 4°C. For long-term storage, aliquot and store at -20°C or below. Avoid multiple freeze-thaw cycles.
Concentration	0.6 mg/ml (Please refer to the vial label for the specific concentration.)
Purification	Affinity purified by Protein G.
Conjugation	Horseradish peroxidase(HRP)

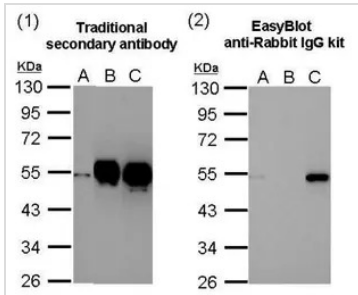


For full product information, images and publications, please visit our [website](#).

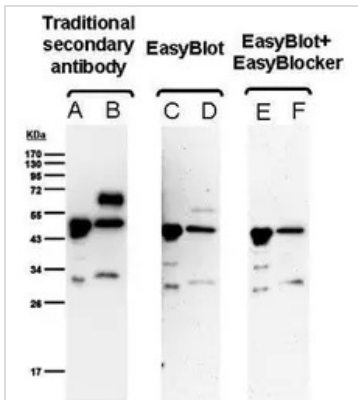
For laboratory research use only. Not for any clinical, therapeutic, or diagnostic use in humans or animals. Not for animal or human consumption.

Note

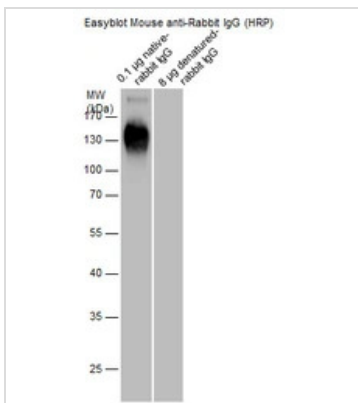
Purchasers shall not, and agree not to enable third parties to, analyze, copy, reverse engineer or otherwise attempt to determine the structure or sequence of the product.

DATA IMAGES

GTx221666-01 WB Image

Comparison of western blot analysis after immunoprecipitation with traditional secondary antibody (1) and EasyBlot anti-Rabbit IgG kit (GTx225856-01)(2). (A) Input, 20ug of HCT116 lysate. (B) and (C): HCT116 lysates were immunoprecipitated using 2.5 ug of normal rabbit IgG (B) or anti-p53 antibody (GTx102965) (C). The precipitated protein was detected by GTx102965 diluted at 1:10000.


GTx221666-01 WB Image

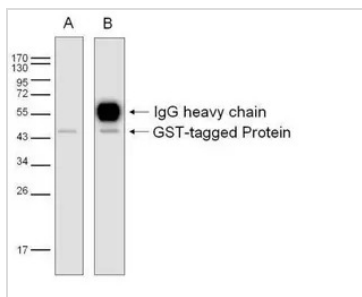
Comparison of western blot analysis after immunoprecipitation with traditional secondary antibody, EasyBlot anti-Rabbit IgG (HRP) (GTx221666-01) and EasyBlot anti-Rabbit IgG kit (GTx225856-01). A,C,and E: E. coli lysate with overexpressed GST-tagged protein B,D,and F: IP result IP and 1st antibody: anti-GST antibody


GTx221666-01 WB Image

EasyBlot anti Rabbit IgG (HRP) antibody detects native-rabbit IgG by western blot analysis. Recombinant Protein (8 and 0.1 µg) was separated by 10% SDS-PAGE, and the membrane was blotted with EasyBlot anti Rabbit IgG (HRP) antibody (GTx221666-01) at a dilution of 1:5000.



For full product information, images and publications, please visit our [website](https://www.genetex.com).


GTX221666-01 WB Image

GST-tagged protein (Mw: 45 kDa) was immunoprecipitated from E. coli lysate using 8 ug of anti-GST antibody (GTX110736). The precipitated protein was detected by GTX110736 diluted at 1:3000.

A: EasyBlot

B: Goat anti-rabbit antibody



For full product information, images and publications, please visit our [website](#).

EasyBlot anti Mouse IgG (HRP)

Cat. No. GTX221667-01

Host	Goat
Clonality	Polyclonal
Isotype	IgG
Applications	WB
Reactivity	Mouse

References (41)

★★★★★ Review (1)

Package

250 µl, 50 µl

PRODUCT

Summary

EasyBlot anti-Mouse IgG is an HRP-conjugated second step reagent that specifically reacts with the native, non-reduced form of mouse IgG and does not bind the reduced, denatured form. Using Easyblot decreases the interference caused by the heavy (~50 kDa) and light chains (~25 kDa) of the IgG used for immunoprecipitation (IP). EasyBlot is simple to use and results in Western Blot detection of only the target band in your IP experiments. Exercise caution when using Protein A/G for IP with EasyBlot. Protein A/G contaminants bind to mouse IgG with high affinity and may cause contaminating bands with a molecular weight similar to IgG heavy chain or light chain.

To minimize background from Protein A/G contamination, we strongly recommend the use of EasyBlot Kit anti-Mouse IgG (Optimized for Prot A/G) (GTXGTX225857-01) or EasyBlocker (GTX425858) to minimize protein A/G contamination or you can use anti-Mouse IgG Agarose beads (GTX27018) instead of Protein A/G.

Applications

Application Note

*Optimal dilutions/concentrations should be determined by the researcher.

Suggested dilution Recommended dilution

WB 1:1000

Note : Use 2-5 µg of the IP antibody; do not exceed 5 µg. Completely reduce all IP samples by 100mM DTT (fresh prepared). For further detail, please refer to the protocol.

Not tested in other applications.

Properties

Form	Liquid
Buffer	0.05M Tris, 0.15M NaCl, 1%BSA, 40% Glycerol
Preservative	0.025% ProClin 300
Storage	Store as concentrated solution. Centrifuge briefly prior to opening vial. For short-term storage (1-2 weeks), store at 4°C. For long-term storage, aliquot and store at -20°C or below. Avoid multiple freeze-thaw cycles.
Concentration	0.03 mg/ml (Please refer to the vial label for the specific concentration.)
Purification	Purified by antigen-affinity chromatography.
Conjugation	Horseradish peroxidase(HRP)



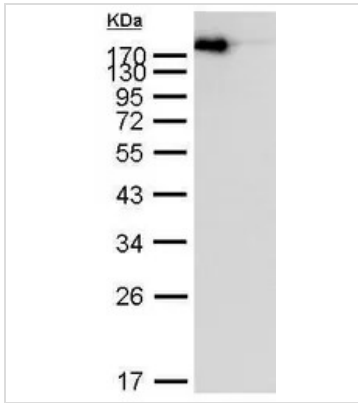
For full product information, images and publications, please visit our [website](#).

Date 2025 / 12 / 05 Page 5 of 8

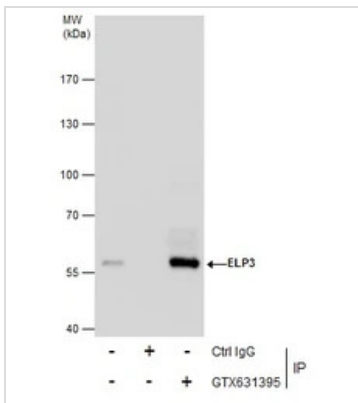
For laboratory research use only. Not for any clinical, therapeutic, or diagnostic use in humans or animals. Not for animal or human consumption.

Note

Purchasers shall not, and agree not to enable third parties to, analyze, copy, reverse engineer or otherwise attempt to determine the structure or sequence of the product.

DATA IMAGES

GTX221667-01 WB Image

Western Blot analysis of native mouse IgG (left) or denatured mouse IgG (right) using EasyBlot anti Mouse IgG (HRP) antibody.


GTX221667-01 WB Image

EasyBlot anti-Mouse IgG (HRP) (GTX221667-01) was used as a secondary reagent for immunoprecipitation analysis. 293T lysates were immunoprecipitated using 5 ug of normal mouse IgG or ELP3 antibody [GT11811] (GTX631395)



For full product information, images and publications, please visit our [website](https://www.genetex.com).

EasyBlocker

Cat. No. GTX425858

Applications WB

References (13)

Package

60 g, 12 g

PRODUCT

Summary EasyBlocker for EasyBlot kit

Applications

Application Note

*Optimal dilutions/concentrations should be determined by the researcher.

Suggested dilution

Recommended dilution

WB

Assay dependent

Not tested in other applications.

Properties

Form Lyophilized powder

Buffer PBS

Preservative No preservatives

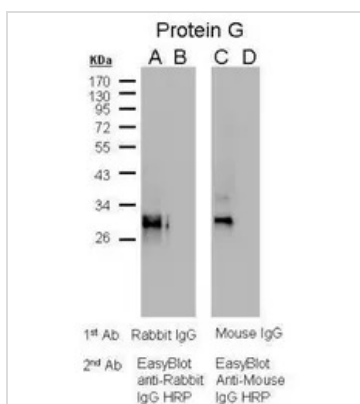
Storage Store at 4°C.

Note

For laboratory research use only. Not for any clinical, therapeutic, or diagnostic use in humans or animals. Not for animal or human consumption.

Purchasers shall not, and agree not to enable third parties to, analyze, copy, reverse engineer or otherwise attempt to determine the structure or sequence of the product.

DATA IMAGES

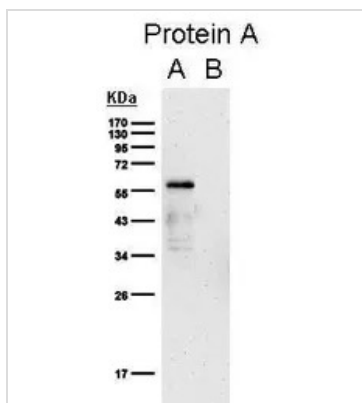


GTX425858 WB Image

EasyBlocker Western blot analysis of protein G sample. Membrane was blocked with 5% milk (A and C) or EasyBlocker (B and D). A and B: 1st antibody: Rabbit IgG 2nd antibody: EasyBlot anti-Rabbit IgG HRP C and D: 1st antibody: Mouse IgG 2nd antibody: EasyBlot anti-Mouse IgG HRP



For full product information, images and publications, please visit our [website](#).



GTX425858 WB Image

EasyBlocker Western blot analysis of protein A sample. Membrane was blocked with (A) 5% milk or (B) EasyBlocker. Rabbit anti-GST antibody was then used as 1st antibody followed by EasyBlot anti-Rabbit IgG HRP as second step reagent.



For full product information, images and publications, please visit our [website](#).