

GTX300113

Tag Antibody Panel (with positive control)

Product Content

Cat No	Product Name	Reactivity	Applications	Package
GTX130342-pro	Multiple Tags Positive Control (6xHis-MBP-DDDDK-V5-HSV-HA-T7-Myc-S)		ELISA	5 µg
GTX628914	6X His tag antibody [GT359]	Species independent	WB, ICC/IF, IP, ELISA	10 µl
GTX637082	HA tag antibody [HL1603]	Species independent	WB, ICC/IF, ELISA, IHC-P (cell pellet)	10 µl

Note

For In vitro laboratory use only. Not for any clinical, therapeutic, or diagnostic use in humans or animals. Not for animal or human consumption.



For full product information, images and publications, please visit our [website](#).

Multiple Tags Positive Control (6xHis-MBP-DDDDK-V5-HSV-HA-T7-Myc-S)

Cat. No. GTX130342-pro
Applications

ELISA

Package

100 µg, 25 µg

Properties
Form Liquid

Buffer 1X SDS-PAGE sample loading buffer

Preservative No preservatives

Storage Store as concentrated solution. Centrifuge briefly prior to opening vial. For short-term storage (1-2 weeks), store at 4°C. For long-term storage, aliquot and store at -20°C or below. Avoid multiple freeze-thaw cycles.

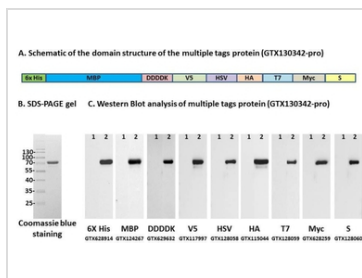
Concentration Batch dependent (Please refer to the vial label for the specific concentration.)

Expression System E. coli

Purity > 90%

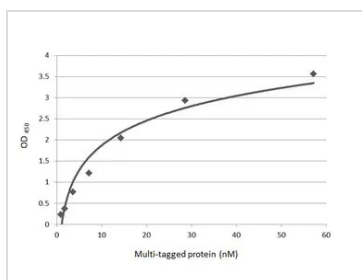
Conjugation Unconjugated

Note For In vitro laboratory use only. Not for any clinical, therapeutic, or diagnostic use in humans or animals. Not for animal or human consumption.

DATA IMAGES

GTX130342-pro Image

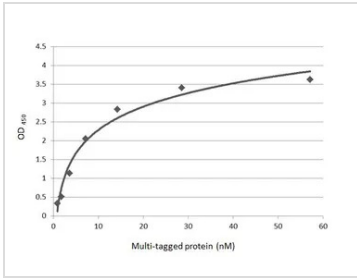
Lane1: 1 µg of negative control

Lane2: 1 µg of multiple tags positive control (GTX130342-pro) blots were probed with various GeneTex's Tag antibodies and then probed with goat polyclonal secondary antibody to rabbit IgG - H&L (HRP) (GTX213110-01) or goat polyclonal secondary antibody to mouse IgG - H&L (HRP) (GTX213111-01).


GTX130342-pro Image

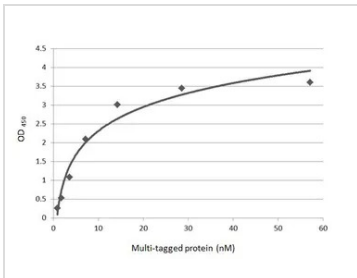
Indirect ELISA analysis was performed by coating the plate with recombinant Multiple Tags Positive Control (6xHis-MBP-DDDDK-V5-HSV-HA-T7-Myc-S) (GTX130342-pro) (57.14-0.89 nM). Coated protein was probed with DDDDK tag antibody [HL3005] (GTX640415) (1 µg/mL). Goat anti-rabbit IgG antibody (HRP) (GTX213110-01) (1:10000) was used to detect the bound primary antibody.


 For full product information, images and publications, please visit our [website](https://www.genetex.com).



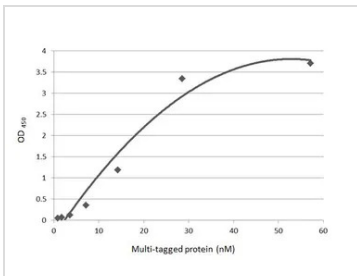
GTX130342-pro Image

Indirect ELISA analysis was performed by coating the plate with recombinant Multiple Tags Positive Control (6xHis-MBP-DDDDK-V5-HSV-HA-T7-Myc-S) (GTX130342-pro) (57.14-0.89 nM). Coated protein was probed with Myc tag antibody [GT0002] (GTX628259) (1 µg/mL). Goat antibody Mouse IgG antibody (HRP) (1:10000) was used to detect the bound primary antibody.



GTX130342-pro Image

Indirect ELISA analysis was performed by coating the plate with recombinant Multiple Tags Positive Control (6xHis-MBP-DDDDK-V5-HSV-HA-T7-Myc-S) (GTX130342-pro) (57.14-0.89 nM). Coated protein was probed with c-Myc antibody [9E10] (GTX20032) (1 µg/mL). Goat antibody Mouse IgG antibody (HRP) (1:10000) was used to detect the bound primary antibody.



GTX130342-pro ELISA Image

Indirect ELISA analysis was performed by coating the plate with recombinant Multiple Tags Positive Control (6xHis-MBP-DDDDK-V5-HSV-HA-T7-Myc-S) (GTX130342-pro) (57.14-0.89 nM). Coated protein was probed with DDDDK tag antibody [M2-MS] (GTX641655) (1 µg/mL). Goat anti-mouse IgG antibody (HRP) (GTX213111-01) (1:10000) was used to detect the bound primary antibody.



For full product information, images and publications, please visit our [website](https://www.genetex.com).

6X His tag antibody [GT359]

Cat. No. GTX628914

Host	Mouse
Clonality	Monoclonal
Isotype	IgG3
Applications	WB, ICC/IF, IP, ELISA
Reactivity	Species independent

References (50)

★★★★☆ Review (1)

Package

100 µl, 25 µl

Applications

Application Note

*Optimal dilutions/concentrations should be determined by the researcher.

Suggested dilution	Recommended dilution
WB	1:1000-1:10000
ICC/IF	1:100-1:2000
IP	1:100-1:500
ELISA	1:1000-1:10000

Not tested in other applications.

Properties

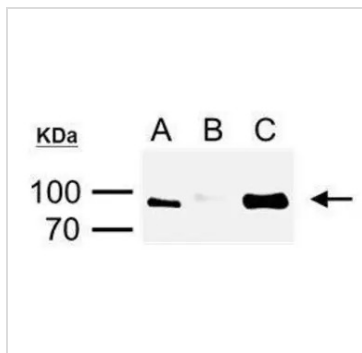
Form	Liquid
Buffer	PBS
Preservative	No preservatives
Storage	Store as concentrated solution. Centrifuge briefly prior to opening vial. For short-term storage (1-2 weeks), store at 4°C. For long-term storage, aliquot and store at -20°C or below. Avoid multiple freeze-thaw cycles.
Concentration	1 mg/ml (Please refer to the vial label for the specific concentration.)
Immunogen	The immunogen used to generate this antibody corresponds to 6X His tag
Purification	Affinity purified by Protein G.
Conjugation	Unconjugated

Note

For laboratory research use only. Not for any clinical, therapeutic, or diagnostic use in humans or animals. Not for animal or human consumption.

Purchasers shall not, and agree not to enable third parties to, analyze, copy, reverse engineer or otherwise attempt to determine the structure or sequence of the product.

For full product information, images and publications, please visit our [website](#).

DATA IMAGES

GTX628914 IP Image

6X His tag antibody [GT359] immunoprecipitates His-fused protein in IP experiments.

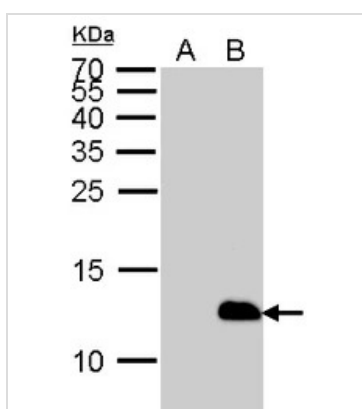
IP Sample: cell lysate/extract of His-fused gene transfected HeLa cells

A. 1/20 lysate/extract of transfected HeLa cells

B. Control with 2 µg of preimmune mouse IgG

C. Immunoprecipitation of His-fused protein by 2 µg of 6X His tag antibody [GT359] (GTX628914)
12% SDS-PAGE

The immunoprecipitated His-fused protein was detected by 6X His tag antibody [GT359] (GTX628914) diluted at 1:1000.


GTX628914 WB Image

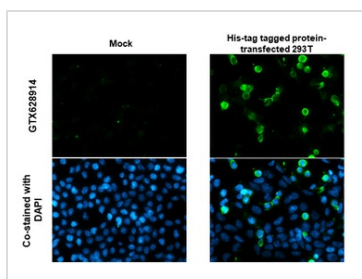
6x His antibody detects 6x His protein by Western blot analysis.

A. Non-induced cell lysates from E. coli expressing HIS-tagged proteins

B. IPTG-induced cell lysates from E. coli expressing HIS-tagged proteins

15 % SDS-PAGE

6x His antibody (GTX628914) dilution: 1:5000

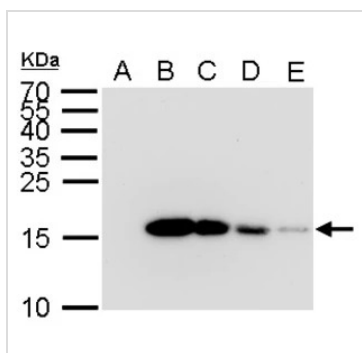

GTX628914 ICC/IF Image

6X His tag antibody [GT359] detects 6X His tag protein by immunofluorescent analysis.

Sample: Mock and transfected 293T cells were fixed in 4% paraformaldehyde at RT for 15 min.

Green: 6X His tag stained by 6X His tag antibody [GT359] (GTX628914) diluted at 1:1000.

Blue: Fluoroshield with DAPI (GTX30920).


GTX628914 WB Image

6x His antibody detects 6x His protein by Western blot analysis.

A. 2 µg GST-recombinant protein

B. 2 µg His-recombinant protein

C. 1 µg His-recombinant protein

D. 0.5 µg His-recombinant protein E. 0.1 µg His-recombinant protein

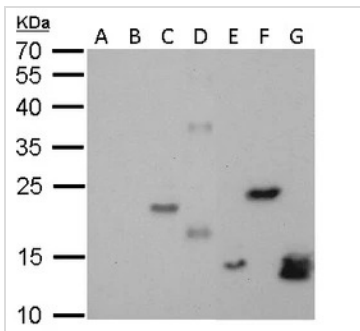
E. 0.1 µg His-recombinant protein E. 0.1 µg His-recombinant protein

12 % SDS-PAGE

6x His antibody (GTX628914) dilution: 1:5000



For full product information, images and publications, please visit our [website](http://www.genetex.com).



GTX628914 WB Image

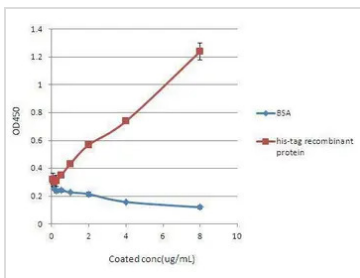
6x His antibody detects 6x His protein by Western blot analysis.

Lane A and B were Non-IPTG-induced cell lysate from E. coli expressing different GST-tagged proteins.

Lane C to G were IPTG induced cell lysate from E. coli expressing different His-tagged protein.

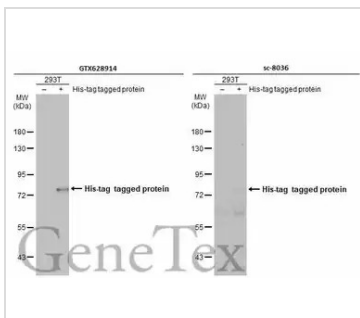
12 % SDS-PAGE

6x His antibody (GTX628914) dilution: 1:5000



GTX628914 ELISA Image

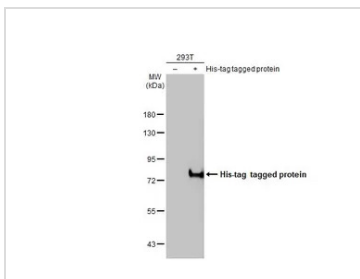
6X His tag antibody [GT359] detects His-tagged recombinant proteins by indirect ELISA analysis. Various dilutions of His-tagged recombinant proteins coated onto the 96-well plate were detected by using 0.5 µg/ml 6X His tag antibody [GT359] (GTX628914). Bound Abs were further detected by using HRP-conjugated goat anti-mouse IgG (GTX213111-01) with HRP substrates.



GTX628914 WB Image

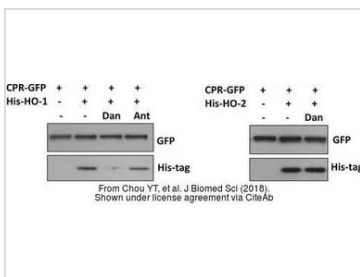
Non-transfected (–) and transfected (+) 293T whole cell extracts (30 µg) were separated by 7.5% SDS-PAGE, and the membranes were blotted with 6X His tag antibody [GT359] (GTX628914) diluted at 1:1000 and competitor's antibody (sc-8036) diluted at 1:5000. The HRP-conjugated anti-mouse IgG antibody (GTX213111-01) was used to detect the primary antibody, and the signal was developed with Trident ECL plus-Enhanced.

*The competitor is not affiliated with GeneTex and does not endorse this product.



GTX628914 WB Image

Non-transfected (–) and transfected (+) 293T whole cell extracts (30 µg) were separated by 7.5% SDS-PAGE, and the membrane was blotted with 6X His tag antibody [GT359] (GTX628914) diluted at 1:5000. The HRP-conjugated anti-mouse IgG antibody (GTX213111-01) was used to detect the primary antibody.

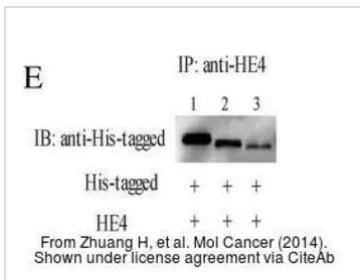


GTX628914 WB Image

The data was published in the journal J Biomed Sci in 2018. [PMID: 29361943](https://pubmed.ncbi.nlm.nih.gov/29361943/)

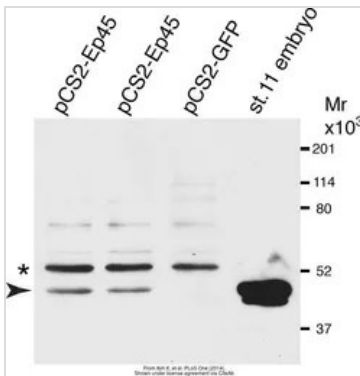


For full product information, images and publications, please visit our [website](https://www.genetex.com).



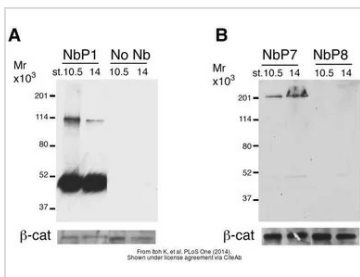
GTX628914 WB Image

The data was published in the journal Mol Cancer in 2014. [PMID: 25362534](#)



GTX628914 WB Image

The data was published in the journal PLoS One in 2014. [PMID: 25285446](#)



GTX628914 WB Image

The data was published in the journal PLoS One in 2014. [PMID: 25285446](#)



For full product information, images and publications, please visit our [website](#).

HA tag antibody [HL1603]

Cat. No. GTX637082

Host	Rabbit
Clonality	Monoclonal
Isotype	IgG
Applications	WB, ICC/IF, ELISA, IHC-P (cell pellet)
Reactivity	Species independent

 Review (1)

Package
100 µl, 25 µl

Applications

Application Note

*Optimal dilutions/concentrations should be determined by the researcher.

Suggested dilution	Recommended dilution
WB	1:1000-1:10000
ICC/IF	Assay dependent
ELISA	Assay dependent
IHC-P (cell pellet)	Assay dependent

Not tested in other applications.

Properties

Form	Liquid
Buffer	PBS
Preservative	No preservatives
Storage	Store as concentrated solution. Centrifuge briefly prior to opening vial. For short-term storage (1-2 weeks), store at 4°C. For long-term storage, aliquot and store at -20°C or below. Avoid multiple freeze-thaw cycles.
Concentration	1 mg/ml (Please refer to the vial label for the specific concentration.)
Immunogen	The immunogen used to generate this antibody corresponds to HA tag.
Purification	Affinity purified by Protein A.
Conjugation	Unconjugated

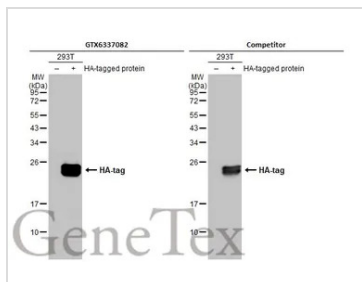
Note

For laboratory research use only. Not for any clinical, therapeutic, or diagnostic use in humans or animals. Not for animal or human consumption.

Purchasers shall not, and agree not to enable third parties to, analyze, copy, reverse engineer or otherwise attempt to determine the structure or sequence of the product.

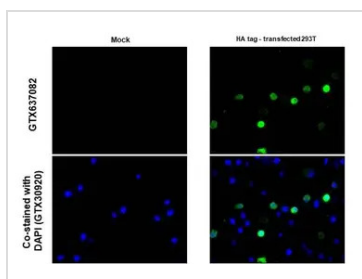


For full product information, images and publications, please visit our [website](#).

DATA IMAGES

GTX637082 WB Image

Non-transfected (–) and transfected (+) 293T whole cell extracts (30 µg) were separated by 12% SDS-PAGE, and the membranes were blotted with HA tag antibody [HL1603] (GTX637082) diluted at 1:5000 and competitor's antibody (Competitor) diluted at 1:5000. The HRP-conjugated anti-rabbit IgG antibody (GTX213110-01) was used to detect the primary antibody.

*The competitor is not affiliated with GeneTex and does not endorse this product.


GTX637082 IHC-P (cell pellet) Image

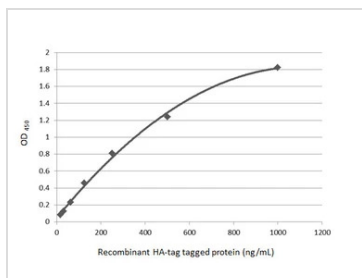
HA tag antibody [HL1603] detects HA tag protein at cytoplasm by immunohistochemical analysis.

Sample: Paraffin-embedded mock and HA tag - transfected 293T cell pellet.

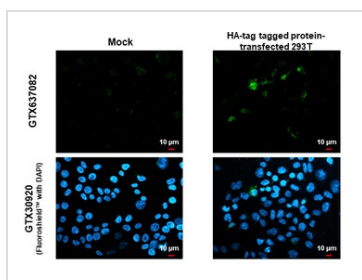
Green: HA tag stained by HA tag antibody [HL1603] (GTX637082) diluted at 1:1000.

Blue: Fluoroshield with DAPI (GTX30920).

Antigen Retrieval: Citrate buffer, pH 6.0, 15 min


GTX637082 ELISA Image

Indirect ELISA analysis was performed by coating the plate with recombinant HA-tag tagged protein (1000-15.63 ng/mL). Coated protein was probed with HA tag antibody [HL1603] (GTX637082) (1 µg/mL). Goat anti-rabbit IgG antibody (HRP) (GTX213110-01) (1:10000) was used to detect the bound primary antibody.

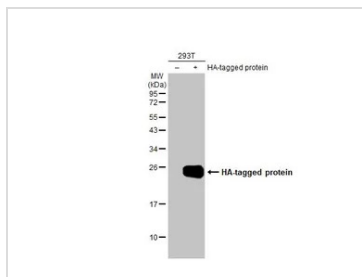

GTX637082 ICC/IF Image

HA tag antibody [HL1603] detects HA tag protein by immunofluorescent analysis.

Sample: Mock and transfected 293T cells were fixed in 4% paraformaldehyde at RT for 15 min.

Green: HA tag stained by HA tag antibody [HL1603] (GTX637082) diluted at 1:500.

Blue: Fluoroshield with DAPI (GTX30920).


GTX637082 WB Image

Non-transfected (–) and transfected (+) 293T whole cell extracts (30 µg) were separated by 12% SDS-PAGE, and the membrane was blotted with HA tag antibody [HL1603] (GTX637082) diluted at 1:5000. The HRP-conjugated anti-rabbit IgG antibody (GTX213110-01) was used to detect the primary antibody.



For full product information, images and publications, please visit our [website](https://www.genetex.com).