

Cytochrome P450 antibody

Cat. No. GTX30013

Host	Rabbit
Clonality	Polyclonal
Isotype	IgG
Applications	WB
Reactivity	Human, Mouse, Rat, Rabbit, Dog, Guinea pig, Monkey

Package
100 µl

Applications

Application Note

*Optimal dilutions/concentrations should be determined by the researcher.

Suggested dilution	Recommended dilution
WB	1-5µg/ml
Not tested in other applications.	

Calculated MW 59 kDa. ([Note](#))

Properties

Form	Liquid
Buffer	PBS, 50% Glycerol
Preservative	0.09% Sodium azide
Storage	Store as concentrated solution. Centrifuge briefly prior to opening vial. For short-term storage (1-2 weeks), store at 4°C. For long-term storage, aliquot and store at -20°C or below. Avoid multiple freeze-thaw cycles.
Concentration	Batch dependent (Please refer to the vial label for the specific concentration.)
Immunogen	Native rat cytochrome P450.
Purification	Protein A purified
Conjugation	Unconjugated

Note

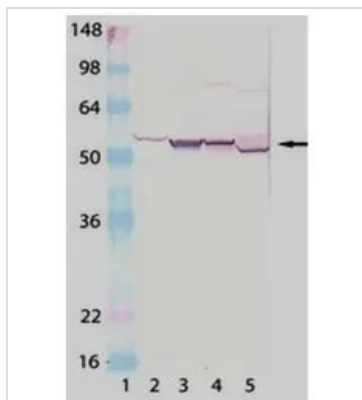
For laboratory research use only. Not for any clinical, therapeutic, or diagnostic use in humans or animals. Not for animal or human consumption.

Purchasers shall not, and agree not to enable third parties to, analyze, copy, reverse engineer or otherwise attempt to determine the structure or sequence of the product.



For full product information, images and publications, please visit our [website](#).

DATA IMAGES



GTX30013 WB Image

WB analysis of human liver microsome (Lane 2), rat liver microsome (Lane 3), mouse liver microsome (Lane 4), rabbit liver microsome (Lane 5) lysates using GTX30013 Cytochrome P450 antibody.

Dilution : 1-5µg/ml



For full product information, images and publications, please visit our [website](https://www.genetex.com).