

ADAM9 antibody

Cat. No. GTX30025

Host	Rabbit
Clonality	Polyclonal
Isotype	IgG
Applications	WB, ICC/IF
Reactivity	Human, Mouse, Rat

References (2)

Package

100 µl

Applications

Application Note

*Optimal dilutions/concentrations should be determined by the researcher.

Suggested dilution	Recommended dilution
WB	1:500 - 1:2000
ICC/IF	1:50 - 1:200

Not tested in other applications.

Calculated MW 91 kDa. ([Note](#))

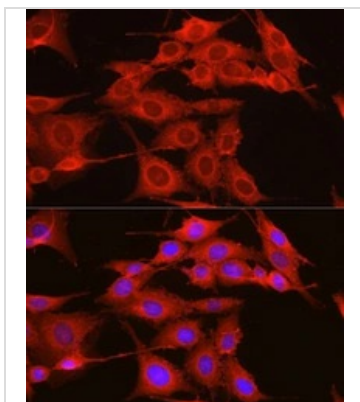
Properties

Form	Liquid
Buffer	PBS, 50% Glycerol
Preservative	0.02% Sodium azide
Storage	Store as concentrated solution. Centrifuge briefly prior to opening vial. For short-term storage (1-2 weeks), store at 4°C. For long-term storage, aliquot and store at -20°C or below. Avoid multiple freeze-thaw cycles.
Concentration	Batch dependent (Please refer to the vial label for the specific concentration.)
Immunogen	Recombinant fusion protein containing a sequence corresponding to amino acids 475-685 of human ADAM9 (NP_003807.1).
Purification	Purified by affinity chromatography
Conjugation	Unconjugated
Note	<p>For laboratory research use only. Not for any clinical, therapeutic, or diagnostic use in humans or animals. Not for animal or human consumption.</p> <p>Purchasers shall not, and agree not to enable third parties to, analyze, copy, reverse engineer or otherwise attempt to determine the structure or sequence of the product.</p>



For full product information, images and publications, please visit our [website](#).

DATA IMAGES



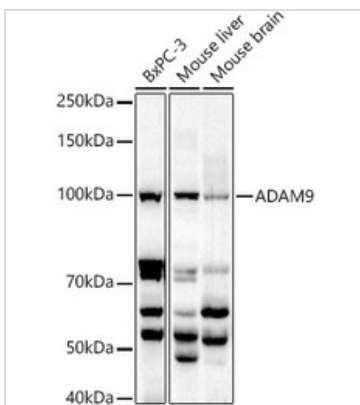
GTX30025 ICC/IF Image

ICC/IF analysis of NIH/3T3 cells using GTX30025 ADAM9 antibody.

Oragne : Primary antibody

Blue : DAPI

Dilution : 1:50

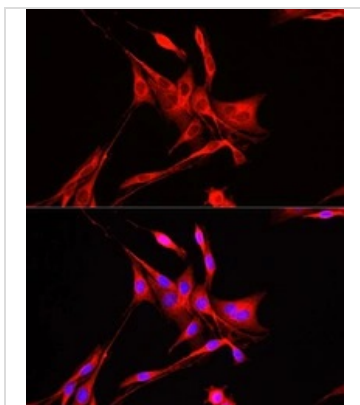


GTX30025 WB Image

WB analysis of various samples using GTX30025 ADAM9 antibody.

Dilution : 1:1000

Loading : 25µg per lane



GTX30025 ICC/IF Image

ICC/IF analysis of PC-12 cells using GTX30025 ADAM9 antibody.

Oragne : Primary antibody

Blue : DAPI

Dilution : 1:50



For full product information, images and publications, please visit our [website](#).