

HIF1 alpha antibody [H1alpha67]

Cat. No. GTX30105

Host	Mouse
Clonality	Monoclonal
Isotype	IgG2b
Applications	WB, ICC/IF, IHC-P, IHC-Fr, FCM, IP, ELISA, ChIP assay, Activation, Gel supershift assays, IHC
Reactivity	Human, Mouse, Rat, Yeast, Rabbit, Sheep, Bovine, Pig, Monkey, Bat, Ferret, Xenopus, Primate

References (9)

Package

100 µl

Applications

Application Note

*Optimal dilutions/concentrations should be determined by the researcher.

Suggested dilution	Recommended dilution
WB	1:500
ICC/IF	1:50
IHC-P	1:20 - 1:50
IHC-Fr	1:20 - 1:50
FCM	1:10 - 1:1000
IP	1:10 - 1:500
ELISA	1:100 - 1:2000
ChIP assay	1 - 5 µg
Activation	Assay dependent
Gel supershift assays	1:1 - 1:100
IHC	1:20 - 1:50

Not tested in other applications.

Calculated MW 93 kDa. ([Note](#))

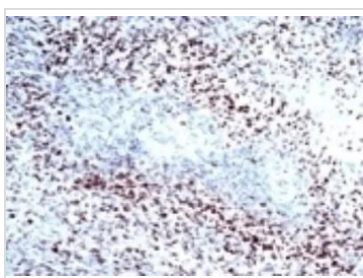
Properties

Form	Liquid
Buffer	PBS, 1% BSA
Preservative	0.05% Sodium azide
Storage	Store as concentrated solution. Centrifuge briefly prior to opening vial. For short-term storage (1-2 weeks), store at 4°C. For long-term storage, aliquot and store at -20°C or below. Avoid multiple freeze-thaw cycles.

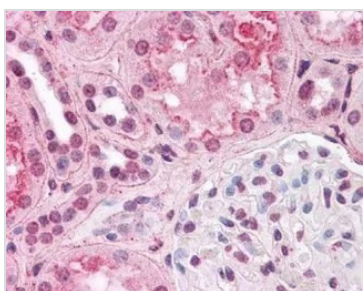


For full product information, images and publications, please visit our [website](#).

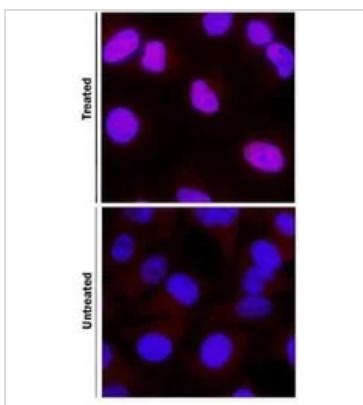
Concentration	1 mg/ml (Please refer to the vial label for the specific concentration.)
Immunogen	A fusion protein containing amino acids 432 - 528 of human HIF-1 alpha [UniProt# Q16665].
Purification	Protein G purified
Conjugation	Unconjugated
Note	<p>For laboratory research use only. Not for any clinical, therapeutic, or diagnostic use in humans or animals. Not for animal or human consumption.</p> <p>Purchasers shall not, and agree not to enable third parties to, analyze, copy, reverse engineer or otherwise attempt to determine the structure or sequence of the product.</p>

DATA IMAGES

GTx30105 IHC-P Image

IHC-P analysis of human glioblastoma multiforme tissue using GTx30105 HIF1 alpha antibody [H1alpha67].


GTx30105 IHC-P Image

IHC-P analysis of human kidney tissue using GTx30105 HIF1 alpha antibody [H1alpha67].


GTx30105 ICC/IF Image

ICC/IF analysis of Deferoxamine-treated HeLa cells using GTx30105 HIF1 alpha antibody [H1alpha67].

Red : primary antibody

Blue : DAPI

Dilution : 1 µg/ml



For full product information, images and publications, please visit our [website](#).