

## NTH1 antibody

Cat. No. GTX30107

Host	Rabbit
Clonality	Polyclonal
Isotype	IgG
Applications	WB, ICC/IF, IHC-P
Reactivity	Human, Mouse, Rat, Bovine

References ( 1 )

Package

200 µl

## Applications

## Application Note

\*Optimal dilutions/concentrations should be determined by the researcher.

Suggested dilution	Recommended dilution
WB	1:500
ICC/IF	1:800
IHC-P	Assay dependent

Not tested in other applications.

Calculated MW 34 kDa. ( [Note](#) )

## Properties

Form	Liquid
Buffer	PBS
Preservative	0.05% Sodium azide
Storage	Store as concentrated solution. Centrifuge briefly prior to opening vial. For short-term storage (1-2 weeks), store at 4°C. For long-term storage, aliquot and store at -20°C or below. Avoid multiple freeze-thaw cycles.
Concentration	1.1 mg/ml (Please refer to the vial label for the specific concentration.)
Immunogen	A peptide derived from human NTH1, conjugated to KLH. [UniProt# P78549]
Purification	Purified by antigen-affinity chromatography
Conjugation	Unconjugated

## Note

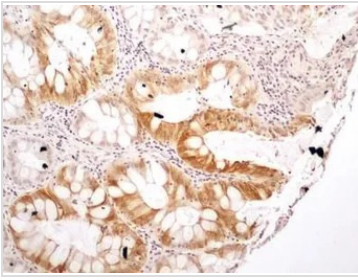
For laboratory research use only. Not for any clinical, therapeutic, or diagnostic use in humans or animals. Not for animal or human consumption.

Purchasers shall not, and agree not to enable third parties to, analyze, copy, reverse engineer or otherwise attempt to determine the structure or sequence of the product.



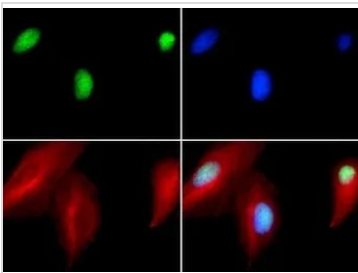
For full product information, images and publications, please visit our [website](#).

## DATA IMAGES



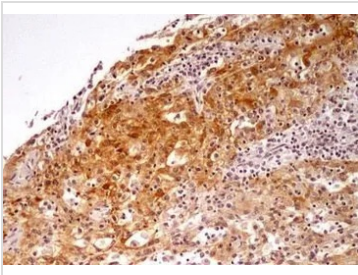
### GTX30107 IHC-P Image

IHC-P analysis of human rectal cancer tissue using GTX30107 NTH1 antibody.  
Dilution : 5 µg/ml



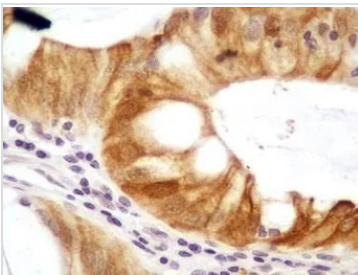
### GTX30107 ICC/IF Image

ICC/IF analysis of HeLa cells using GTX30107 NTH1 antibody.  
Green : primary antibody  
Red : Tubulin  
Blue : DAPI



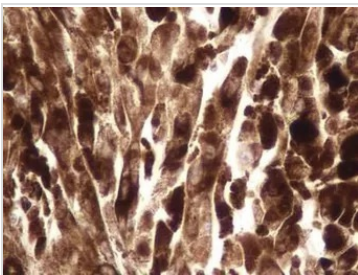
### GTX30107 IHC-P Image

IHC-P analysis of human kidney cancer tissue using GTX30107 NTH1 antibody.  
Dilution : 5 µg/ml



### GTX30107 IHC-P Image

IHC-P analysis of human rectal cancer tissue using GTX30107 NTH1 antibody.  
Dilution : 5 µg/ml



### GTX30107 IHC-P Image

IHC-P analysis of human lymph node cancer tissue using GTX30107 NTH1 antibody.  
Dilution : 5 µg/ml



For full product information, images and publications, please visit our [website](https://www.genetex.com).