

## MTH1 antibody

Cat. No. GTX30108

Host	Rabbit
Clonality	Polyclonal
Isotype	IgG
Applications	WB, ICC/IF, IHC-P, IHC-Fr
Reactivity	Human, Mouse, Rat, Monkey

Package  
200 µl

## Applications

## Application Note

\*Optimal dilutions/concentrations should be determined by the researcher.

Suggested dilution	Recommended dilution
WB	1:500
ICC/IF	1:50 - 1:200
IHC-P	Assay dependent
IHC-Fr	1:200

Not tested in other applications.

Calculated MW 23 kDa. ( [Note](#) )

## Properties

Form	Liquid
Buffer	PBS
Preservative	0.02% Sodium azide
Storage	Store as concentrated solution. Centrifuge briefly prior to opening vial. For short-term storage (1-2 weeks), store at 4°C. For long-term storage, aliquot and store at -20°C or below. Avoid multiple freeze-thaw cycles.
Concentration	1 mg/ml (Please refer to the vial label for the specific concentration.)
Immunogen	A C-terminal peptide derived from human MTH1, conjugated to KLH. [UniProt# P36639]
Purification	Purified by antigen-affinity chromatography
Conjugation	Unconjugated

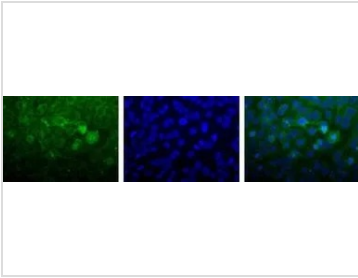
## Note

For laboratory research use only. Not for any clinical, therapeutic, or diagnostic use in humans or animals. Not for animal or human consumption.

Purchasers shall not, and agree not to enable third parties to, analyze, copy, reverse engineer or otherwise attempt to determine the structure or sequence of the product.

For full product information, images and publications, please visit our [website](#).

## DATA IMAGES

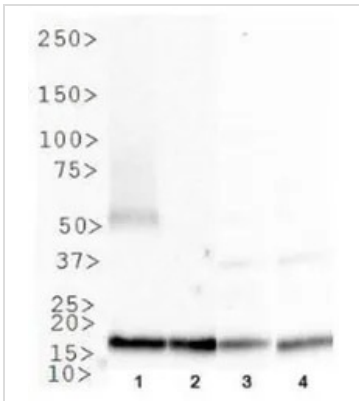


### GTX30108 ICC/IF Image

ICC/IF analysis of HeLa cells using GTX30108 MTH1 antibody.

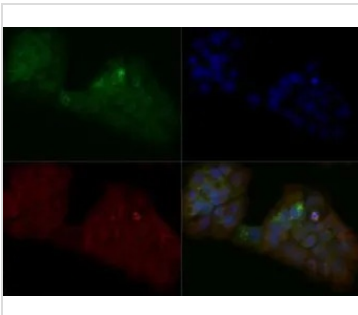
Green : primary antibody

Blue : Hoechst 33258



### GTX30108 WB Image

WB analysis of (1) NTERA-2, (2) MCF-7-, (3) A431, and (4) COS-7 cell lysate using GTX30108 MTH1 antibody.



### GTX30108 ICC/IF Image

ICC/IF analysis of A431 cells using GTX30108 MTH1 antibody.

Green : primary antibody

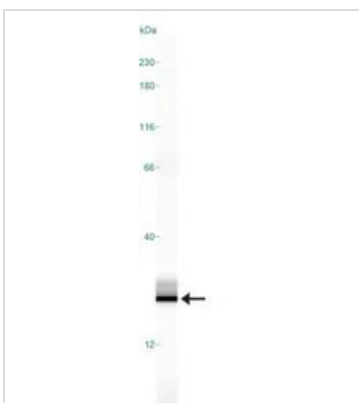
Red : Tubulin

Blue : DAPI

Dilution : 1:200

Fixation : 10% formalin

Permibilization : 0.5% Triton-X100



### GTX30108 WB Image

WB analysis of A431 cell lysate using GTX30108 MTH1 antibody.



For full product information, images and publications, please visit our [website](https://www.genetex.com).