

POLE antibody [3C5.1]

Cat. No. GTX30112

Host	Mouse
Clonality	Monoclonal
Isotype	IgG2a
Applications	WB, ICC/IF, IP
Reactivity	Human, Mouse, Mustelid, Primate

Package

50 µl

Applications

Application Note

*Optimal dilutions/concentrations should be determined by the researcher.

Suggested dilution	Recommended dilution
WB	5 µg/ml
ICC/IF	1:100
IP	1:10 - 1:500

Not tested in other applications.

Calculated MW 262 kDa. ([Note](#))

Product Note This is specific to the human DNA pol epsilon and does not recognize DNA pol alpha, beta or delta. We do not recommend use of this product for Drosophila samples.

Properties

Form	Liquid
Buffer	PBS
Preservative	No preservatives
Storage	Store as concentrated solution. Centrifuge briefly prior to opening vial. For short-term storage (1-2 weeks), store at 4°C. For long-term storage, aliquot and store at -20°C or below. Avoid multiple freeze-thaw cycles.
Concentration	16 mg/ml (Please refer to the vial label for the specific concentration.)
Immunogen	Human DNA Polymerase epsilon purified from HeLa cells.
Purification	Protein G purified
Conjugation	Unconjugated



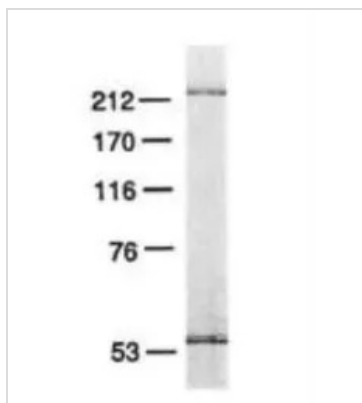
For full product information, images and publications, please visit our [website](#).

For laboratory research use only. Not for any clinical, therapeutic, or diagnostic use in humans or animals. Not for animal or human consumption.

Note

Purchasers shall not, and agree not to enable third parties to, analyze, copy, reverse engineer or otherwise attempt to determine the structure or sequence of the product.

DATA IMAGES



GTX30112 WB Image

WB analysis of HeLa cell lysate using GTX30112 POLE antibody [3C5.1].



For full product information, images and publications, please visit our [website](#).