

HIF2 alpha antibody

Cat. No. GTX30114

Host	Rabbit
Clonality	Polyclonal
Isotype	IgG
Applications	WB, ICC/IF, IHC-P, IHC
Reactivity	Human, Mouse, Rat, Monkey, Fish

References (15)

Package

100 µl

PRODUCT

Summary

HIF2 alpha antibody recognizes HIF2 alpha / EPAS1 protein, a transcription factor (predicted molecular weight of 97 kDa) induced by hypoxic conditions. It forms a heterodimer with HIF1 beta / ARNT to drive a specific gene expression profile in various physiological and pathological processes that occur in the context of hypoxia.

Applications

Application Note

Recommended Starting Dilutions:

For WB: Use at a dilution of 1:100-1:3000. Recognizes a band at 118kDa.

For IHC: Use at a dilution of 1:100.

For ICC/IF: Use at a dilution of 1:100-1:1000.

Optimal dilutions/concentrations should be determined by the researcher.

Calculated MW 97 kDa. ([Note](#))

Product Note Specific for HIF-2 alpha/EPAS. Does not cross react with HIF-1 alpha.

Properties

Form	Liquid
Buffer	PBS, 20% Glycerol
Preservative	0.01% Thimerosal
Storage	Store as concentrated solution. Centrifuge briefly prior to opening vial. For short-term storage (1-2 weeks), store at 4°C. For long-term storage, aliquot and store at -20°C or below. Avoid multiple freeze-thaw cycles.
Concentration	1 mg/ml (Please refer to the vial label for the specific concentration.)
Immunogen	A peptide derived from the mouse/human HIF2 alpha.
Purification	Purified by antigen-affinity chromatography.
Conjugation	Unconjugated

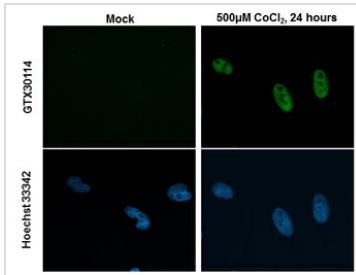


For full product information, images and publications, please visit our [website](#).

For laboratory research use only. Not for any clinical, therapeutic, or diagnostic use in humans or animals. Not for animal or human consumption.

Note

Purchasers shall not, and agree not to enable third parties to, analyze, copy, reverse engineer or otherwise attempt to determine the structure or sequence of the product.

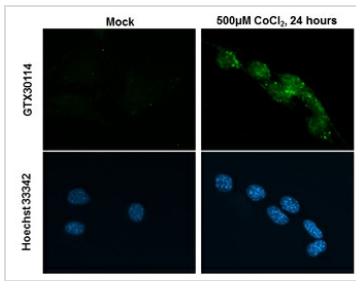
DATA IMAGES

GTX30114 ICC/IF Image

HIF2 alpha antibody detects HIF2 alpha protein at nucleus by immunofluorescent analysis.

Sample: HeLa cells were fixed in 4% paraformaldehyde at RT for 15 min.

Green: HIF2 alpha stained by HIF2 alpha antibody (GTX30114) diluted at 1:200.

Blue: Hoechst 33342 staining.

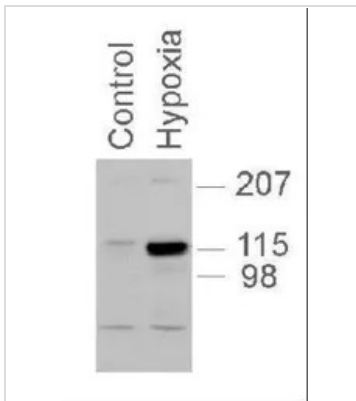

GTX30114 ICC/IF Image

HIF2 alpha antibody detects HIF2 alpha protein at nucleus by immunofluorescent analysis.

Sample: NIH-3T3 cells were fixed in 4% paraformaldehyde at RT for 15 min.

Green: HIF2 alpha stained by HIF2 alpha antibody (GTX30114) diluted at 1:200.

Blue: Hoechst 33342 staining.


GTX30114 WB Image

GTX30114 utilized in western blot with PC12 nuclear extracts, 1:1,000, 5 second exposure.



For full product information, images and publications, please visit our [website](https://www.genetex.com).