

HIF1 beta antibody [H1beta234]

Cat. No. GTX30116

Host	Mouse
Clonality	Monoclonal
Isotype	IgG1
Application	WB, ICC/IF, IHC-P, IP, ChIP assay, Gel supershift assays
Reactivity	Human, Mouse, Rat, Sheep, Bovine, Ferret, Primate

Package
100 µl

APPLICATION

Application Note

*Optimal dilutions/concentrations should be determined by the researcher.

Suggested dilution	Recommended dilution
WB	1:500 - 1:2000
ICC/IF	Assay dependent
IHC-P	1:100
IP	Assay dependent
ChIP assay	1:10 - 1:500
Gel supershift assays	Assay dependent

Not tested in other applications.

Calculated MW 87 kDa. ([Note](#))

PROPERTIES

Form	Liquid
Buffer	PBS
Preservative	0.05% Sodium azide
Storage	Store as concentrated solution. Centrifuge briefly prior to opening vial. For short-term storage (1-2 weeks), store at 4°C. For long-term storage, aliquot and store at -20°C or below. Avoid multiple freeze-thaw cycles.
Concentration	1.4 mg/ml (Please refer to the vial label for the specific concentration.)
Immunogen	Fusion protein containing amino acids 496-789 of human HIF-1 beta. [UniProt# P27540]
Purification	Protein G purified
Conjugation	Unconjugated

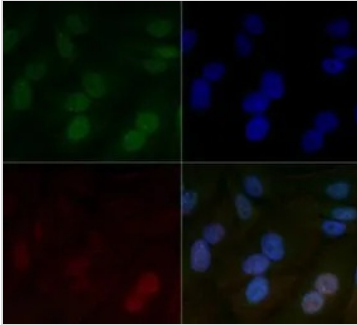
For full product information, images and publications, please visit our [website](#).

For laboratory research use only. Not for any clinical, therapeutic, or diagnostic use in humans or animals. Not for animal or human consumption.

Note

Purchasers shall not, and agree not to enable third parties to, analyze, copy, reverse engineer or otherwise attempt to determine the structure or sequence of the product.

DATA IMAGES



GTX30116 ICC/IF Image

ICC/IF analysis of HeLa cells using GTX30116 HIF1 beta antibody [H1beta234].

Green : primary antibody

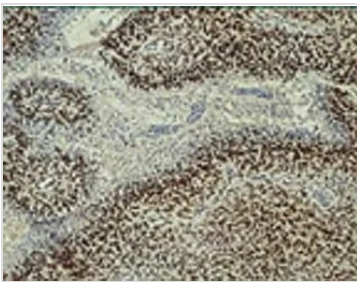
Red : Actin

Blue : DAPI

Dilution : 5 µg/ml

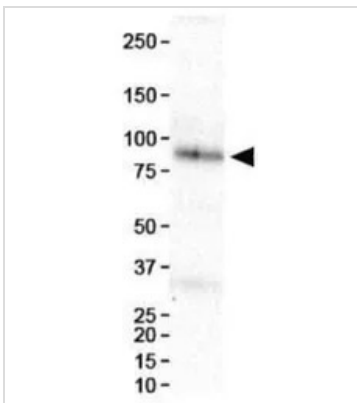
Fixation : 10% formalin

Permibilization : 0.5% Triton-X100



GTX30116 IHC-P Image

IHC-P analysis of human glioblastoma tissue using GTX30116 HIF1 beta antibody [H1beta234].



GTX30116 WB Image

WB analysis of HeLa nuclear extract using GTX30116 HIF1 beta antibody [H1beta234].



For full product information, images and publications, please visit our [website](https://www.genetex.com).