

PER2 antibody

Cat. No. GTX30117

Host	Rabbit
Clonality	Polyclonal
Isotype	IgG
Application	WB, ICC/IF, IHC-P, IP
Reactivity	Human, Mouse, Rat

Package
100 µl

APPLICATION

Application Note

*Optimal dilutions/concentrations should be determined by the researcher.

Suggested dilution	Recommended dilution
WB	1:1000
ICC/IF	1:100 - 1:500
IHC-P	1:200
IP	Assay dependent

Not tested in other applications.

Calculated MW 137 kDa. ([Note](#))

PROPERTIES

Form	Liquid
Buffer	PBS
Preservative	0.02% Sodium azide
Storage	Store as concentrated solution. Centrifuge briefly prior to opening vial. For short-term storage (1-2 weeks), store at 4°C. For long-term storage, aliquot and store at -20°C or below. Avoid multiple freeze-thaw cycles.
Immunogen	Two peptides derived from human PER2 [UniProt# O15055]. Antibodies cross-reacting with each peptide were affinity purified against the appropriate peptide.
Purification	Unpurified
Conjugation	Unconjugated

Note

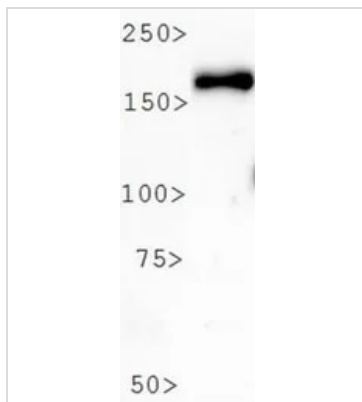
For laboratory research use only. Not for any clinical, therapeutic, or diagnostic use in humans or animals. Not for animal or human consumption.

Purchasers shall not, and agree not to enable third parties to, analyze, copy, reverse engineer or otherwise attempt to determine the structure or sequence of the product.



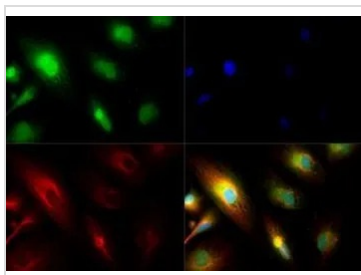
For full product information, images and publications, please visit our [website](#).

DATA IMAGES



GTX30117 WB Image

WB analysis of ARPE-19 cell lysate using GTX30117 PER2 antibody.



GTX30117 ICC/IF Image

ICC/IF analysis of ARPE-19 cells using GTX30117 PER2 antibody.

Green : primary antibody

Red : Tubulin

Blue : DAPI

Dilution : 1:250



For full product information, images and publications, please visit our [website](https://www.genetex.com).