

# BMAL1 antibody

**Cat. No. GTX30121**

<b>Host</b>	Rabbit
<b>Clonality</b>	Polyclonal
<b>Isotype</b>	IgG
<b>Application</b>	WB, ChIP assay
<b>Reactivity</b>	Human, Mouse

**Package**  
400 µl

## APPLICATION

### Application Note

\*Optimal dilutions/concentrations should be determined by the researcher.

Suggested dilution	Recommended dilution
WB	1:100 - 1:200
ChIP assay	1:10 - 1:500

Not tested in other applications.

**Calculated MW** 69 kDa. ( [Note](#) )

## PROPERTIES

<b>Form</b>	Liquid
<b>Buffer</b>	Serum
<b>Preservative</b>	0.02% Sodium azide
<b>Storage</b>	Store as concentrated solution. Centrifuge briefly prior to opening vial. Store at 4°C. DO NOT FREEZE.
<b>Immunogen</b>	Recombinant protein corresponding to residues 294-624 of human BMAL1. [UniProt# O00327]
<b>Purification</b>	Unpurified
<b>Conjugation</b>	Unconjugated

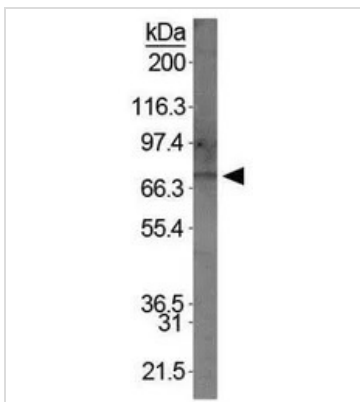
### Note

For laboratory research use only. Not for any clinical, therapeutic, or diagnostic use in humans or animals. Not for animal or human consumption.

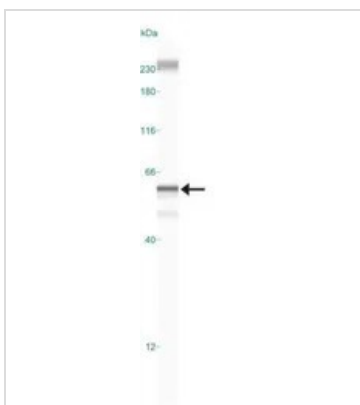
Purchasers shall not, and agree not to enable third parties to, analyze, copy, reverse engineer or otherwise attempt to determine the structure or sequence of the product.



For full product information, images and publications, please visit our [website](#).

**DATA IMAGES**

**GTX30121 WB Image**

WB analysis of 3T3/L1 cell lysate using GTX30121 BMAL1 antibody.


**GTX30121 WB Image**

WB analysis of NIH-3T3 cell lysate using GTX30121 BMAL1 antibody.



For full product information, images and publications, please visit our [website](https://www.genetex.com).