

NBS1 antibody

Cat. No. GTX30125

Host	Rabbit
Clonality	Polyclonal
Isotype	IgG
Applications	WB, ICC/IF, IHC-P, FCM, IP, ChIP assay
Reactivity	Human, Mouse, Hamster, Primate

References (5)

Package

50 µl

Applications

Application Note

*Optimal dilutions/concentrations should be determined by the researcher.

Suggested dilution	Recommended dilution
WB	1:1000
ICC/IF	1:50 - 1:200
IHC-P	1:100 - 1:200
FCM	Assay dependent
IP	3 ul
ChIP assay	Assay dependent

Not tested in other applications.

Calculated MW 85 kDa. ([Note](#))

Properties

Form	Liquid
Buffer	Serum
Preservative	0.02% Sodium azide
Storage	Store as concentrated solution. Centrifuge briefly prior to opening vial. Store at 4°C. DO NOT FREEZE.
Immunogen	Partial length human NBS1 protein [Swiss-Prot# O60934].
Purification	Unpurified
Conjugation	Unconjugated



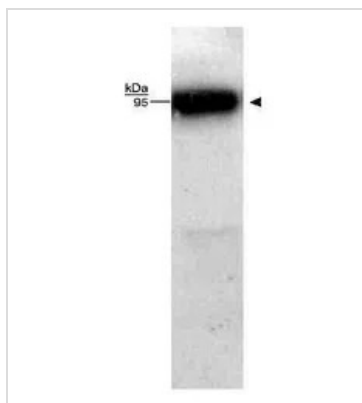
For full product information, images and publications, please visit our [website](#).

For laboratory research use only. Not for any clinical, therapeutic, or diagnostic use in humans or animals. Not for animal or human consumption.

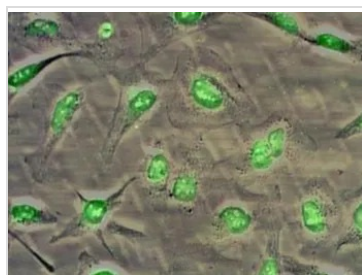
Note

Purchasers shall not, and agree not to enable third parties to, analyze, copy, reverse engineer or otherwise attempt to determine the structure or sequence of the product.

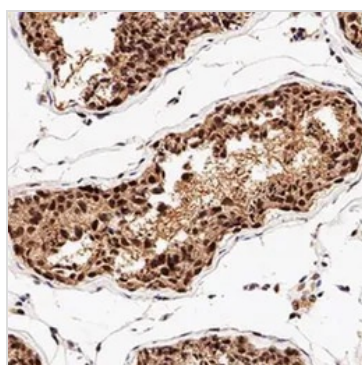
DATA IMAGES

**GTX30125 WB Image**

WB analysis of HeLa cell lysate using GTX30125 NBS1 antibody.

**GTX30125 ICC/IF Image**

ICC/IF analysis of HeLa cells using GTX30125 NBS1 antibody.

**GTX30125 IHC-P Image**

IHC-P analysis of human testis tissue using GTX30125 NBS1 antibody.

Dilution : 1:200

Antigen retrieval : Heat induced antigen retrieval (HIER) using 10mM sodium citrate buffer (pH 6.0)



For full product information, images and publications, please visit our [website](#).