

Rad51C antibody [2H11/6]

Cat. No. GTX30137

| | |
|--------------|--------------------------------------|
| Host | Mouse |
| Clonality | Monoclonal |
| Isotype | IgG1 |
| Applications | WB, ICC/IF, IHC-P, FCM, IP, MS |
| Reactivity | Human, Mouse, Yeast, Monkey, Primate |

Package
100 µl

Applications

Application Note

*Optimal dilutions/concentrations should be determined by the researcher.

| Suggested dilution | Recommended dilution |
|--------------------|------------------------------|
| WB | 1:1000 |
| ICC/IF | Assay dependent |
| IHC-P | Assay dependent |
| FCM | 1 µg / 10 ⁶ cells |
| IP | Assay dependent |
| MS | Assay dependent |

Not tested in other applications.

| | |
|---------------|---|
| Calculated MW | 42 kDa. (Note) |
| Product Note | Does not cross-react with Rad51B, Rad51D, Rad51, XRCC2, or XRCC3 in Western analysis. |

Properties

| | |
|---------------|--|
| Form | Liquid |
| Buffer | PBS |
| Preservative | 0.02% Sodium azide |
| Storage | Store as concentrated solution. Centrifuge briefly prior to opening vial. Store at 4°C. DO NOT FREEZE. |
| Concentration | 1 mg/ml (Please refer to the vial label for the specific concentration.) |
| Immunogen | His-tagged human Rad51C, over-expressed in E. coli. [UniProt# O43502] |
| Purification | Protein G purified |
| Conjugation | Unconjugated |

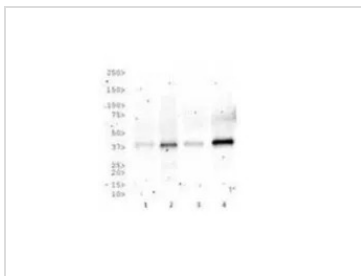
For full product information, images and publications, please visit our [website](#).

For laboratory research use only. Not for any clinical, therapeutic, or diagnostic use in humans or animals. Not for animal or human consumption.

Note

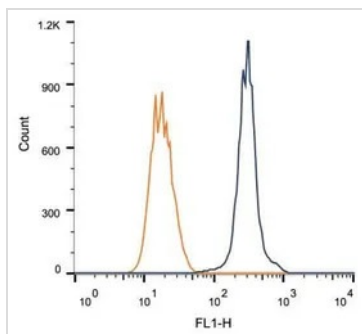
Purchasers shall not, and agree not to enable third parties to, analyze, copy, reverse engineer or otherwise attempt to determine the structure or sequence of the product.

DATA IMAGES



GTx30137 WB Image

WB analysis of (1) HeLa, (2) HepG2, (3) COS-7, and (4) HEK293 cell lysate using GTx30137 Rad51C antibody [2H11/6].



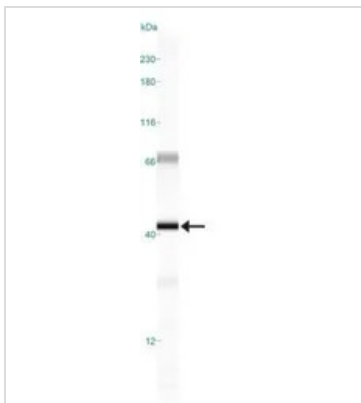
GTx30137 FCM Image

FACS (Intracellular staining) analysis of HeLa cells using GTx30137 Rad51C antibody [2H11/6].

Blue : Primary antibody

Orange : isotype control

Dilution : 1 µg/10⁶ cells



GTx30137 WB Image

WB analysis of HepG2 cell lysate using GTx30137 Rad51C antibody [2H11/6].



For full product information, images and publications, please visit our [website](https://www.genetex.com).