

FANCD2 antibody

Cat. No. GTX30142

Host	Rabbit
Clonality	Polyclonal
Isotype	IgG
Application	WB, IHC-P, FACS, IP
Reactivity	Human, Mouse, Dog, Primate

Reference (12)
Package
50 µl

APPLICATION

Application Note

*Optimal dilutions/concentrations should be determined by the researcher.

Suggested dilution	Recommended dilution
WB	1:10000 - 1:20000
IHC-P	2.5 - 5 µg/ml
FACS	Assay dependent
IP	1:10 - 1:500

Not tested in other applications.

Calculated MW	164 kDa. (Note)
Product Note	This antibody is specific for FANCD2.

PROPERTIES

Form	Liquid
Buffer	PBS
Preservative	0.05% Sodium azide
Storage	Store as concentrated solution. Centrifuge briefly prior to opening vial. For short-term storage (1-2 weeks), store at 4°C. For long-term storage, aliquot and store at -20°C or below. Avoid multiple freeze-thaw cycles.
Concentration	1 mg/ml (Please refer to the vial label for the specific concentration.)
Immunogen	Human FANCD2 fusion protein (N-terminal fragment). [Swiss-Prot #Q9BXW9]
Purification	Purified by antigen-affinity chromatography
Conjugation	Unconjugated

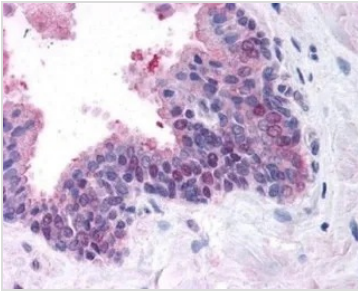


For full product information, images and publications, please visit our [website](#).

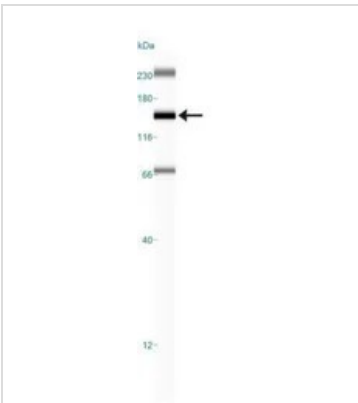
For laboratory research use only. Not for any clinical, therapeutic, or diagnostic use in humans or animals. Not for animal or human consumption.

Note

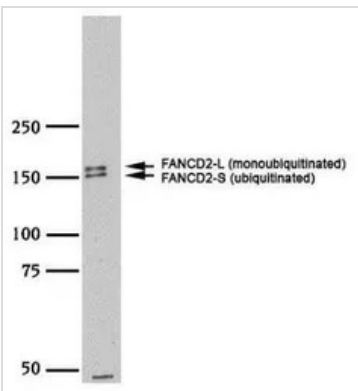
Purchasers shall not, and agree not to enable third parties to, analyze, copy, reverse engineer or otherwise attempt to determine the structure or sequence of the product.

DATA IMAGES

GTX30142 IHC-P Image

IHC-P analysis of human prostate tissue using GTX30142 FANCD2 antibody.


GTX30142 WB Image

WB analysis of HeLa cell lysate using GTX30142 FANCD2 antibody.


GTX30142 WB Image

WB analysis of HeLa cell lysate using GTX30142 FANCD2 antibody.

Dilution : 1:20000



For full product information, images and publications, please visit our [website](https://www.genetex.com).