

## FANCD2 antibody

Cat. No. GTX30142

Host	Rabbit
Clonality	Polyclonal
Isotype	IgG
Applications	WB, IHC-P, FCM, IP
Reactivity	Human, Mouse, Dog, Primate

References ( 12 )

Package

50 µl

## Applications

## Application Note

\*Optimal dilutions/concentrations should be determined by the researcher.

Suggested dilution	Recommended dilution
WB	1:10000 - 1:20000
IHC-P	2.5 - 5 µg/ml
FCM	Assay dependent
IP	1:10 - 1:500

Not tested in other applications.

**Calculated MW** 164 kDa. ( [Note](#) )

**Product Note** This antibody is specific for FANCD2.

## Properties

Form	Liquid
Buffer	PBS
Preservative	0.05% Sodium azide
Storage	Store as concentrated solution. Centrifuge briefly prior to opening vial. For short-term storage (1-2 weeks), store at 4°C. For long-term storage, aliquot and store at -20°C or below. Avoid multiple freeze-thaw cycles.
Concentration	1 mg/ml (Please refer to the vial label for the specific concentration.)
Immunogen	Human FANCD2 fusion protein (N-terminal fragment). [Swiss-Prot #Q9BXW9]
Purification	Purified by antigen-affinity chromatography
Conjugation	Unconjugated

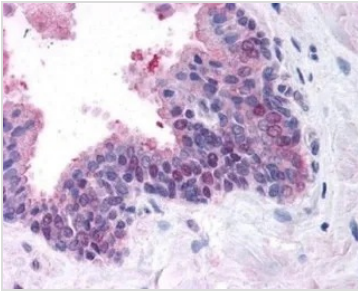


For full product information, images and publications, please visit our [website](#).

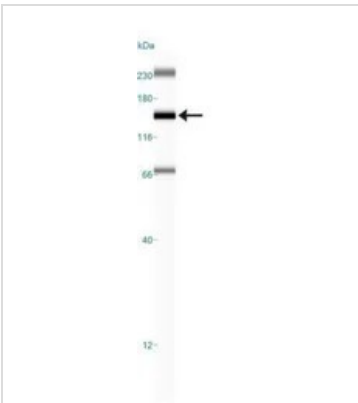
For laboratory research use only. Not for any clinical, therapeutic, or diagnostic use in humans or animals. Not for animal or human consumption.

**Note**

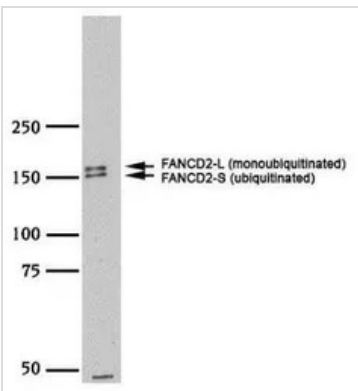
Purchasers shall not, and agree not to enable third parties to, analyze, copy, reverse engineer or otherwise attempt to determine the structure or sequence of the product.

**DATA IMAGES**

**GTX30142 IHC-P Image**

IHC-P analysis of human prostate tissue using GTX30142 FANCD2 antibody.


**GTX30142 WB Image**

WB analysis of HeLa cell lysate using GTX30142 FANCD2 antibody.


**GTX30142 WB Image**

WB analysis of HeLa cell lysate using GTX30142 FANCD2 antibody.

Dilution : 1:20000



For full product information, images and publications, please visit our [website](https://www.genetex.com).