

## Kallikrein 13 antibody

Cat. No. GTX30155

|              |                          |
|--------------|--------------------------|
| Host         | Rabbit                   |
| Clonality    | Polyclonal               |
| Isotype      | IgG                      |
| Applications | WB, IHC-P, IHC-Fr, ELISA |
| Reactivity   | Human                    |

Package  
100 µg

## Applications

## Application Note

\*Optimal dilutions/concentrations should be determined by the researcher.

| Suggested dilution | Recommended dilution |
|--------------------|----------------------|
| WB                 | 1:500 - 1:1000       |
| IHC-P              | 1:10 - 1:500         |
| IHC-Fr             | 1:10 - 1:500         |
| ELISA              | 1:100 - 1:2000       |

Not tested in other applications.

**Calculated MW** 31 kDa. ( [Note](#) )**Product Note** Reacts with residues 262-277 [IRKYETQQQKWLKGPD] of the human KLK-L4 protein.

## Properties

|               |  |
|---------------|--|
| Form          | Liquid   |
| Buffer        | PBS  |
| Preservative  | 0.02% Sodium azide   |
| Storage       | Store as concentrated solution. Centrifuge briefly prior to opening vial. For short-term storage (1-2 weeks), store at 4°C. For long-term storage, aliquot and store at -20°C or below. Avoid multiple freeze-thaw cycles. |
| Concentration | 1 mg/ml (Please refer to the vial label for the specific concentration.)   |
| Immunogen     | Residues 262-277 [IRKYETQQQKWLKGPD] of the human KLK-L4 protein.   |
| Purification  | Purified by antigen-affinity chromatography  |
| Conjugation   | Unconjugated   |



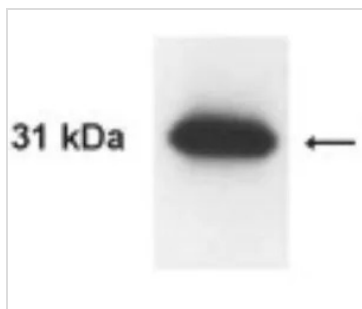
For full product information, images and publications, please visit our [website](#).

For laboratory research use only. Not for any clinical, therapeutic, or diagnostic use in humans or animals. Not for animal or human consumption.

**Note**

Purchasers shall not, and agree not to enable third parties to, analyze, copy, reverse engineer or otherwise attempt to determine the structure or sequence of the product.

## DATA IMAGES



### GTx30155 WB Image

WB analysis of LNCaP cell lysate using GTx30155 Kallikrein 13 antibody.

Dilution : 1:1000



For full product information, images and publications, please visit our [website](#).