

## Thyroid Hormone Receptor alpha antibody [2103]

Cat. No. GTX30162

Host	Mouse
Clonality	Monoclonal
Isotype	IgG1
Applications	WB
Reactivity	Human, Rat

Package  
100 µl

## Applications

## Application Note

\*Optimal dilutions/concentrations should be determined by the researcher.

Suggested dilution	Recommended dilution
WB	Assay dependent

Not tested in other applications.

Calculated MW 55 kDa. ( [Note](#) )

## Properties

Form	Liquid
Buffer	10mM HEPES, 150mM NaCl, 0.01% BSA, 50% Glycerol
Preservative	No preservative
Storage	Store as concentrated solution. Centrifuge briefly prior to opening vial. For short-term storage (1-2 weeks), store at 4°C. For long-term storage, aliquot and store at -20°C or below. Avoid multiple freeze-thaw cycles.
Concentration	Batch dependent (Please refer to the vial label for the specific concentration.)
Immunogen	Synthetic peptide corresponding to amino acid residues from the N-terminal region conjugated to KLH
Purification	Protein G purified
Conjugation	Unconjugated

## Note

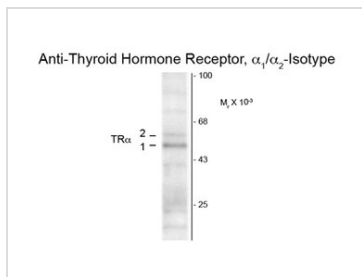
For laboratory research use only. Not for any clinical, therapeutic, or diagnostic use in humans or animals. Not for animal or human consumption.

Purchasers shall not, and agree not to enable third parties to, analyze, copy, reverse engineer or otherwise attempt to determine the structure or sequence of the product.



For full product information, images and publications, please visit our [website](#).

## DATA IMAGES



### GTx30162 WB Image

Western blot of rat hippocampal lysate showing specific immunolabeling of the ~50k TR-α1 and the ~58k TR-α2 protein using THRA antibody [2103] (GTx30162)



For full product information, images and publications, please visit our [website](https://www.genetex.com).