

Progesterone Receptor (phospho Ser190) antibody [1154]

Cat. No. GTX30164

Host	Mouse
Clonality	Monoclonal
Isotype	IgG1
Applications	WB, ICC/IF, IHC-P, IP, ELISA
Reactivity	Human, Mouse

References (1)

Package

100 µg

Applications

Application Note

*Optimal dilutions/concentrations should be determined by the researcher.

Suggested dilution	Recommended dilution
WB	4 µg/ml
ICC/IF	1:10-1:100
IHC-P	2-4 µg/ml
IP	Assay dependent
ELISA	Assay dependent

Not tested in other applications.

Calculated MW 99 kDa. ([Note](#))

Properties

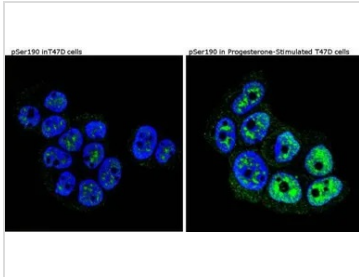
Form	Liquid
Buffer	Buffer, 0.1% BSA
Preservative	0.05% Sodium azide
Storage	Store as concentrated solution. Centrifuge briefly prior to opening vial. For short-term storage (1-2 weeks), store at 4°C. For long-term storage, aliquot and store at -20°C or below. Avoid multiple freeze-thaw cycles.
Concentration	1 mg/ml (Please refer to the vial label for the specific concentration.)
Immunogen	Synthetic phosphopeptide corresponding to residues V(184) L P R G L S(p) P A R Q L L(196) of human Progesterone Receptor.
Purification	Purified IgG
Conjugation	Unconjugated

For full product information, images and publications, please visit our [website](#).

For laboratory research use only. Not for any clinical, therapeutic, or diagnostic use in humans or animals. Not for animal or human consumption.

Note

Purchasers shall not, and agree not to enable third parties to, analyze, copy, reverse engineer or otherwise attempt to determine the structure or sequence of the product.

DATA IMAGES

GTX30164 ICC/IF Image

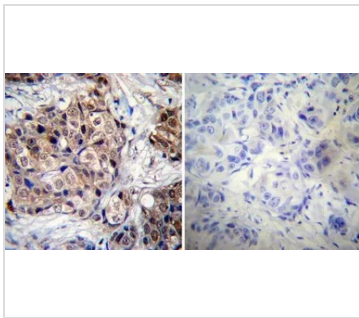
ICC/IF analysis of untreated T47D cells (left panel) or stimulated cells with 100 nM of Progesterone (right panel) using GTX30164 Progesterone Receptor (phospho Ser190) antibody [1154].

Green : Primary antibody

Blue : Nuclei

Fixation : Formalin

Permeabilization : 0.1% Triton X-100 in TBS for 5-10 minute


GTX30164 IHC-P Image

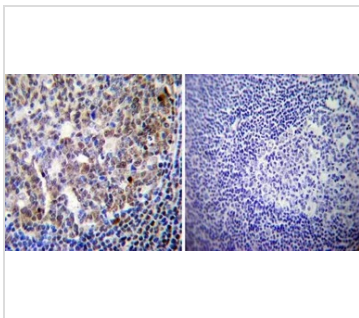
IHC-P analysis of human breast carcinoma tissue using GTX30164 Progesterone Receptor (phospho Ser190) antibody [1154].

Left : Primary antibody

Right : Negative control without primary antibody

Antigen retrieval : heat induced antigen retrieval was performed using 10mM sodium citrate (pH6.0) buffer, microwaved for 8-15 minutes

Dilution : 1:20


GTX30164 IHC-P Image

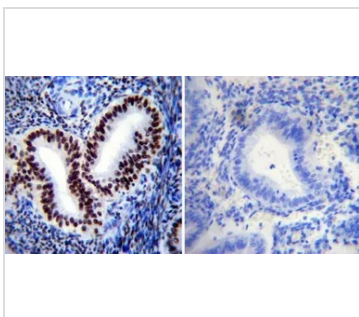
IHC-P analysis of human tonsil tissue using GTX30164 Progesterone Receptor (phospho Ser190) antibody [1154].

Left : Primary antibody

Right : Negative control without primary antibody

Antigen retrieval : heat induced antigen retrieval was performed using 10mM sodium citrate (pH6.0) buffer, microwaved for 8-15 minutes

Dilution : 1:20


GTX30164 IHC-P Image

IHC-P analysis of human uterus tissue using GTX30164 Progesterone Receptor (phospho Ser190) antibody [1154].

Left : Primary antibody

Right : Negative control without primary antibody

Antigen retrieval : heat induced antigen retrieval was performed using 10mM sodium citrate (pH6.0) buffer, microwaved for 8-15 minutes

Dilution : 1:200



For full product information, images and publications, please visit our [website](https://www.genetex.com).