

Progesterone Receptor (phospho Ser294) antibody [608]

Cat. No. GTX30165

Host	Mouse
Clonality	Monoclonal
Isotype	IgG1
Applications	WB, IHC
Reactivity	Human

Package
100 µl

Applications

Application Note

*Optimal dilutions/concentrations should be determined by the researcher.

Suggested dilution	Recommended dilution
WB	Assay dependent
IHC	Assay dependent

Not tested in other applications.

Calculated MW 99 kDa. ([Note](#))

Properties

Form	Liquid
Buffer	10mM HEPES, 150mM NaCl, 0.01% BSA, 50% Glycerol
Preservative	No preservatives
Storage	Store as concentrated solution. Centrifuge briefly prior to opening vial. For short-term storage (1-2 weeks), store at 4°C. For long-term storage, aliquot and store at -20°C or below. Avoid multiple freeze-thaw cycles.
Concentration	Batch dependent (Please refer to the vial label for the specific concentration.)
Immunogen	Synthetic phospho-peptide corresponding to amino acid residues surrounding Ser294 conjugated to KLH
Purification	Protein G purified
Conjugation	Unconjugated

Note

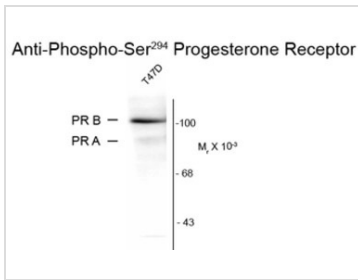
For laboratory research use only. Not for any clinical, therapeutic, or diagnostic use in humans or animals. Not for animal or human consumption.

Purchasers shall not, and agree not to enable third parties to, analyze, copy, reverse engineer or otherwise attempt to determine the structure or sequence of the product.



For full product information, images and publications, please visit our [website](#).

DATA IMAGES



GTX30165 WB Image

Western blot of whole cell T47D lysate prepared from cells that had been incubated in the presence of the synthetic progestin agonist R5020 (500 nM) showing specific immunolabeling of the ~90k PR-A isoform and the ~120 PR-B isoform of the progesterone receptor phosphorylated at Ser294 using Progesterone Receptor (phospho Ser294) antibody [608] (GTX30165). The immunolabeling is blocked by the phosphopeptide used as the antigen (not shown).



For full product information, images and publications, please visit our [website](#).