

Neurokinin 1 Receptor antibody

Cat. No. GTX30169

Host	Rabbit
Clonality	Polyclonal
Isotype	IgG
Applications	WB, IHC-P, IHC-Fr
Reactivity	Human, Mouse, Rat, Dog, Guinea pig

Package
100 µl

Applications

Application Note

*Optimal dilutions/concentrations should be determined by the researcher.

Suggested dilution	Recommended dilution
WB	1:100 - 1:2000
IHC-P	Assay dependent
IHC-Fr	1:1000

Not tested in other applications.

Calculated MW 46 kDa. ([Note](#))

Product Note Specificity was also verified by the localization of immunohistochemical staining with this in neurons in the dorsal horn of the spinal cord and to neurons and muscle cells in the ileum which are known to express high levels of NK-1.

Properties

Form	Liquid
Buffer	Serum
Preservative	No preservatives
Storage	Store as concentrated solution. Centrifuge briefly prior to opening vial. For short-term storage (1-2 weeks), store at 4°C. For long-term storage, aliquot and store at -20°C or below. Avoid multiple freeze-thaw cycles.
Immunogen	A synthetic peptide corresponding to the C-terminus of rat Neurokinin 1 Receptor, conjugated to bovine thyroglobulin. [UniProt# P14600]
Purification	Unpurified
Conjugation	Unconjugated



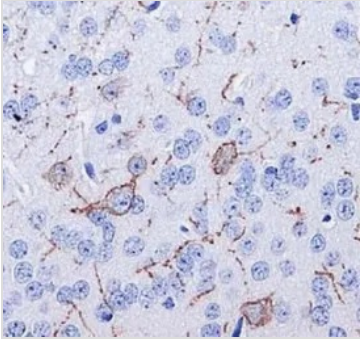
For full product information, images and publications, please visit our [website](#).

For laboratory research use only. Not for any clinical, therapeutic, or diagnostic use in humans or animals. Not for animal or human consumption.

Note

Purchasers shall not, and agree not to enable third parties to, analyze, copy, reverse engineer or otherwise attempt to determine the structure or sequence of the product.

DATA IMAGES



GTX30169 IHC-P Image

IHC-P analysis of mouse brain (selected cells, axon and dendrites) tissue using GTX30169 Neurokinin 1 Receptor antibody.



GTX30169 IHC-P Image

IHC-P analysis of rat spinal cord tissue using GTX30169 Neurokinin 1 Receptor antibody.



For full product information, images and publications, please visit our [website](#).