

NF-L antibody

Cat. No. GTX30190

Host	Rabbit
Clonality	Polyclonal
Isotype	IgG
Applications	WB, ICC/IF, IHC-P
Reactivity	Human, Mouse, Rat, Bovine, Pig, Avian

Package
50 µl

Applications

Application Note

*Optimal dilutions/concentrations should be determined by the researcher.

Suggested dilution	Recommended dilution
WB	1:20000
ICC/IF	1:500 - 1:5000
IHC-P	1:5000

Not tested in other applications.

Product Note Specifically recognizes the light neurofilament subunit (~68 kDa).

Properties

Form	Liquid
Buffer	Serum
Preservative	No preservatives
Storage	Store as concentrated solution. Centrifuge briefly prior to opening vial. For short-term storage (1-2 weeks), store at 4°C. For long-term storage, aliquot and store at -20°C or below. Avoid multiple freeze-thaw cycles.
Immunogen	Native Neurofilament Light protein purified from pig spinal cord [UniProt# P02547]
Purification	Unpurified
Conjugation	Unconjugated

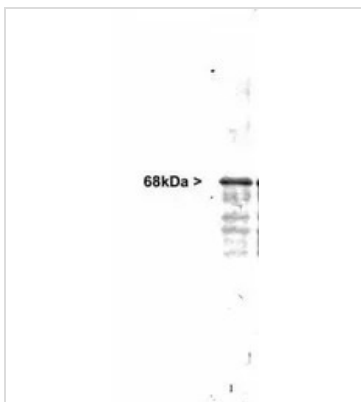
Note For laboratory research use only. Not for any clinical, therapeutic, or diagnostic use in humans or animals. Not for animal or human consumption.

Purchasers shall not, and agree not to enable third parties to, analyze, copy, reverse engineer or otherwise attempt to determine the structure or sequence of the product.



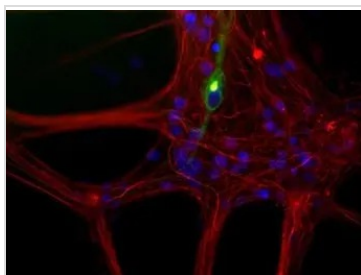
For full product information, images and publications, please visit our [website](#).

DATA IMAGES

**GTX30190 WB Image**

WB analysis of rat cerebellum tissue using GTX30190 NF-L antibody.

Dilution : 1:20000

**GTX30190 ICC/IF Image**

ICC/IF analysis of mixed neuron/glia cell cultures from newborn rat brain using GTX30190 NF-L antibody (red), co-stained with anti-peripherin antibody (green) and DAPI . A class of large neurons, like the one in the middle of this image, contain peripherin, while the majority of neurons and their processes contain NF-L and not peripherin. Interestingly, the peripherin positive cells often contain a cytoplasmic inclusion next to the nucleus which stains for both peripherin and NF-L, and so appears golden in this kind of image.



For full product information, images and publications, please visit our [website](#).