

NF-H antibody

Cat. No. GTX30192

Host	Rabbit
Clonality	Polyclonal
Isotype	IgG
Applications	WB, ICC/IF, IHC-P, IHC-Fr, ELISA, in vitro
Reactivity	Human, Mouse, Rat, Bovine, Cat, Pig

Package

50 µl

Applications

Application Note

*Optimal dilutions/concentrations should be determined by the researcher.

Suggested dilution	Recommended dilution
WB	1:10000
ICC/IF	1:1000
IHC-P	1:1000
IHC-Fr	1:1000
ELISA	1:100 - 1:2000
in vitro	Assay dependent

Not tested in other applications.

Properties

Form	Liquid
Buffer	Serum
Preservative	0.05% Sodium azide
Storage	Store as concentrated solution. Centrifuge briefly prior to opening vial. For short-term storage (1-2 weeks), store at 4°C. For long-term storage, aliquot and store at -20°C or below. Avoid multiple freeze-thaw cycles.
Immunogen	Purified bovine Neurofilament Heavy protein.
Purification	Unpurified
Conjugation	Unconjugated

Note

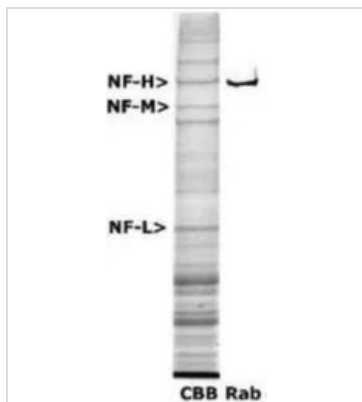
For laboratory research use only. Not for any clinical, therapeutic, or diagnostic use in humans or animals. Not for animal or human consumption.

Purchasers shall not, and agree not to enable third parties to, analyze, copy, reverse engineer or otherwise attempt to determine the structure or sequence of the product.



For full product information, images and publications, please visit our [website](#).

DATA IMAGES



GTX30192 WB Image

WB analysis of rat spinal cord tissue lysate using GTX30192 NF-H antibody. The first lane is Coomassie Brilliant Blue stained and the second lane is probed with rabbit anti-Neurofilament Heavy antibody. The NF-H corresponds to a weight of 200kDa.



For full product information, images and publications, please visit our [website](#).