

alpha Internexin antibody

Cat. No. GTX30195

Host	Rabbit
Clonality	Polyclonal
Isotype	IgG
Applications	WB, ICC/IF, IP, IHC
Reactivity	Human, Mouse, Rat

References (1)

Package

50 µl

Applications

Application Note

*Optimal dilutions/concentrations should be determined by the researcher.

Suggested dilution	Recommended dilution
WB	1:10000 - 1:20000
ICC/IF	1:500 - 1:1000
IP	Assay dependent
IHC	Assay dependent

Not tested in other applications.

Properties

Form	Liquid
Buffer	Serum
Preservative	No preservatives
Storage	Store as concentrated solution. Centrifuge briefly prior to opening vial. For short-term storage (1-2 weeks), store at 4°C. For long-term storage, aliquot and store at -20°C or below. Avoid multiple freeze-thaw cycles.
Immunogen	Purified recombinant rat alpha Internexin [UniProt# P23565]
Purification	Unpurified
Conjugation	Unconjugated

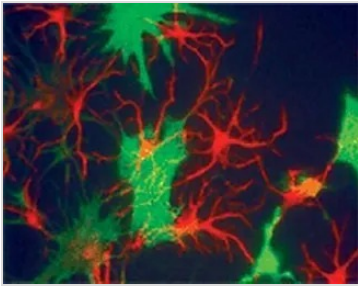
Note

For laboratory research use only. Not for any clinical, therapeutic, or diagnostic use in humans or animals. Not for animal or human consumption.

Purchasers shall not, and agree not to enable third parties to, analyze, copy, reverse engineer or otherwise attempt to determine the structure or sequence of the product.



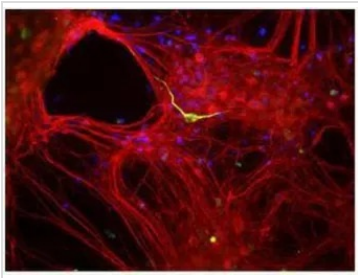
For full product information, images and publications, please visit our [website](#).

DATA IMAGES

GTX30195 ICC/IF Image

ICC/IF analysis of neuronal progenitor cells using GTX30195 alpha Internexin antibody.

Red : primary antibody

Green : Plectin (fibroblast marker)

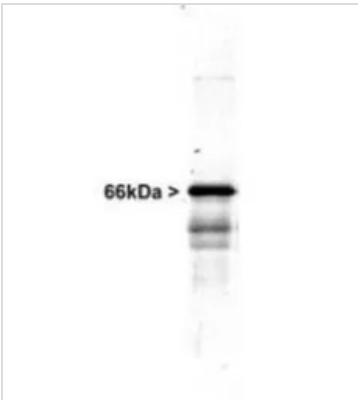

GTX30195 ICC/IF Image

ICC/IF analysis of mixed neuron/glia cell cultures using GTX30195 alpha Internexin antibody. The alpha internexin antibody stains numerous axonal and dendritic profiles in these cultures, while peripherin antibody binds to only a subset of neurons.

Red : primary antibody

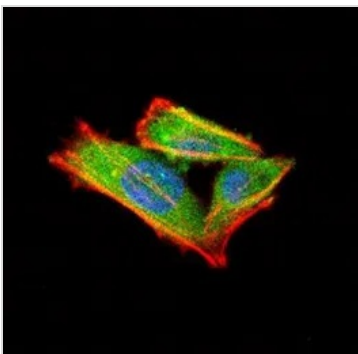
Green : peripherin CPCA-Peri

Blue : DAPI


GTX30195 WB Image

WB analysis of rat spinal cord tissue lysate using GTX30195 alpha Internexin antibody.

Dilution : 1:20000


GTX30195 ICC/IF Image

ICC/IF analysis of SH-SY5Y cells using GTX30195 alpha Internexin antibody.

Green : primary antibody

Red : Actin

Blue : DAPI

Dilution : 1:5



For full product information, images and publications, please visit our [website](https://www.genetex.com).