

Sodium/Potassium ATPase alpha 1 antibody [464.6(6H)]

Cat. No. GTX30202

Host	Mouse
Clonality	Monoclonal
Isotype	IgG1
Applications	WB, ICC/IF, IHC-P, IHC-Fr, IP
Reactivity	Human, Mouse, Rat, Yeast, Rabbit, Drosophila, Bovine, Dog, Guinea pig, Pig, Xenopus, Primate

References (4)

Package

50 µl

Applications

Application Note

*Optimal dilutions/concentrations should be determined by the researcher.

Suggested dilution	Recommended dilution
WB	1:1000 - 1:10000
ICC/IF	1:50 - 1:1000
IHC-P	1:200
IHC-Fr	Assay dependent
IP	Assay dependent

Not tested in other applications.

Calculated MW 113 kDa. ([Note](#))

Properties

Form	Liquid
Buffer	Ascites
Preservative	0.1% Sodium azide
Storage	Store as concentrated solution. Centrifuge briefly prior to opening vial. For short-term storage (1-2 weeks), store at 4°C. For long-term storage, aliquot and store at -20°C or below. Avoid multiple freeze-thaw cycles.
Immunogen	Purified Sodium Potassium ATPase Alpha 1 from rabbit renal outer medulla. [UniProt# Q9N0Z6]
Purification	Unpurified
Conjugation	Unconjugated

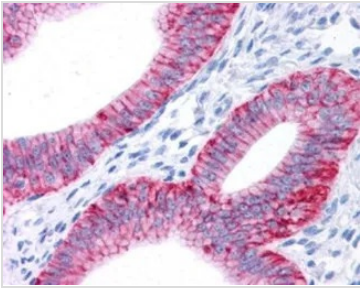


For full product information, images and publications, please visit our [website](#).

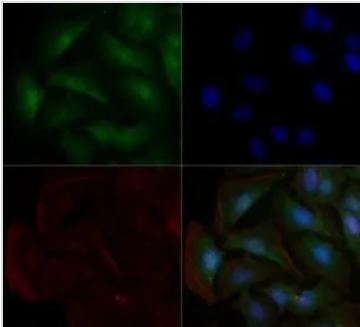
For laboratory research use only. Not for any clinical, therapeutic, or diagnostic use in humans or animals. Not for animal or human consumption.

Note
Purchasers shall not, and agree not to enable third parties to, analyze, copy, reverse engineer or otherwise attempt to determine the structure or sequence of the product.

DATA IMAGES

**GTX30202 IHC-P Image**

IHC-P analysis of human uterus tissue using GTX30202 Sodium Potassium ATPase Alpha 1 antibody [464.6(6H)].

**GTX30202 ICC/IF Image**

ICC/IF analysis of HeLa cells using GTX30202 Sodium Potassium ATPase Alpha 1 antibody [464.6(6H)].

Green : primary antibody

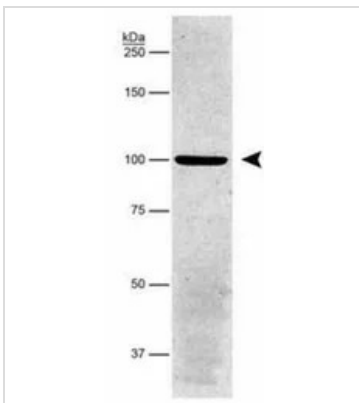
Red : Actin

Blue : DAPI

Dilution : 10 µg/ml

Fixation : 10% formalin

Permibilization : 0.5% Triton-X100

**GTX30202 WB Image**

WB analysis of pig proximal tubule protein using GTX30202 Sodium Potassium ATPase Alpha 1 antibody [464.6(6H)].



For full product information, images and publications, please visit our [website](#).