

## Sodium/Potassium ATPase beta 1 antibody [464.8(8A)]

**Cat. No. GTX30203**

<b>Host</b>	Mouse
<b>Clonality</b>	Monoclonal
<b>Isotype</b>	IgG2a
<b>Applications</b>	WB, ICC/IF, IHC-P
<b>Reactivity</b>	Human, Rat, Rabbit, Bovine, Dog, Hamster, Pig, Xenopus

References ( 1 )  
 Package  
 100 µl

## Applications

**Application Note**

\*Optimal dilutions/concentrations should be determined by the researcher.

Suggested dilution	Recommended dilution
WB	1:1000 - 1:5000
ICC/IF	1:500 - 1:1000
IHC-P	Assay dependent

Not tested in other applications.

**Calculated MW** 35 kDa. ([Note](#))

**Product Note** We do not recommend use of this product for Mouse samples.

## Properties

<b>Form</b>	Liquid
<b>Buffer</b>	Ascites
<b>Preservative</b>	0.1% Sodium azide
<b>Storage</b>	Store as concentrated solution. Centrifuge briefly prior to opening vial. For short-term storage (1-2 weeks), store at 4°C. For long-term storage, aliquot and store at -20°C or below. Avoid multiple freeze-thaw cycles.
<b>Immunogen</b>	Purified Sodium Potassium ATPase Beta 1 from rabbit renal outer medulla. [UniProt# Q9TT37]
<b>Purification</b>	Unpurified
<b>Conjugation</b>	Unconjugated

**Note**

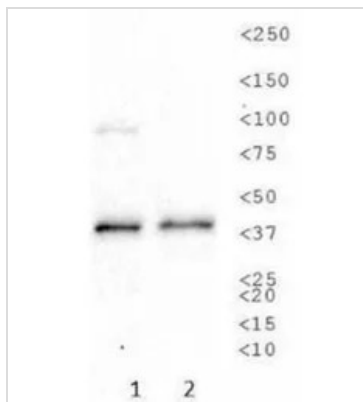
For laboratory research use only. Not for any clinical, therapeutic, or diagnostic use in humans or animals. Not for animal or human consumption.

Purchasers shall not, and agree not to enable third parties to, analyze, copy, reverse engineer or otherwise attempt to determine the structure or sequence of the product.



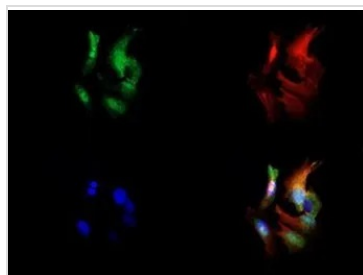
For full product information, images and publications, please visit our [website](#).

DATA IMAGES



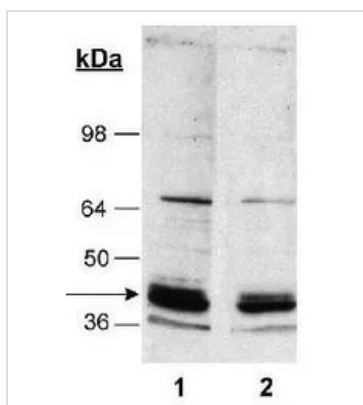
**GTX30203 WB Image**

WB analysis of (1) SK-BR-3 and (2) A431 cell lysate using GTX30203 Sodium Potassium ATPase Beta 1 antibody [464.8(8A)].



**GTX30203 ICC/IF Image**

ICC/IF analysis of HepG2 cells using GTX30203 Sodium Potassium ATPase Beta 1 antibody [464.8(8A)].  
 Green : primary antibody  
 Red : Tubulin  
 Blue : DAPI



**GTX30203 WB Image**

WB analysis of rat kidney tissue using GTX30203 Sodium Potassium ATPase Beta 1 antibody [464.8(8A)].  
 Lane 1 : 1:2500  
 Lane 2 : 1:5000  
 Loading : 20µg



For full product information, images and publications, please visit our [website](#).