

Bestrophin antibody [E6-6]

Cat. No. GTX30219

Host	Mouse
Clonality	Monoclonal
Isotype	IgG1
Applications	WB, ICC/IF, IHC-P, IHC-Fr, IP
Reactivity	Human, Dog, Pig, Primate

Package
100 µl

Applications

Application Note

*Optimal dilutions/concentrations should be determined by the researcher.

Suggested dilution	Recommended dilution
WB	1:1000
ICC/IF	Assay dependent
IHC-P	Assay dependent
IHC-Fr	Assay dependent
IP	Assay dependent

Not tested in other applications.

Calculated MW 68 kDa. ([Note](#))

Product Note We do not recommend use of this product for Rat samples.

Properties

Form	Liquid
Buffer	Ascites
Preservative	0.1% Sodium azide
Storage	Store as concentrated solution. Centrifuge briefly prior to opening vial. For short-term storage (1-2 weeks), store at 4°C. For long-term storage, aliquot and store at -20°C or below. Avoid multiple freeze-thaw cycles.
Immunogen	Synthetic peptide conjugated to KLH corresponding to the C-terminus of human Bestrophin 1 (KDHMDPYWALENRDEAHS) [UniProt# O76090]
Purification	Unpurified
Conjugation	Unconjugated



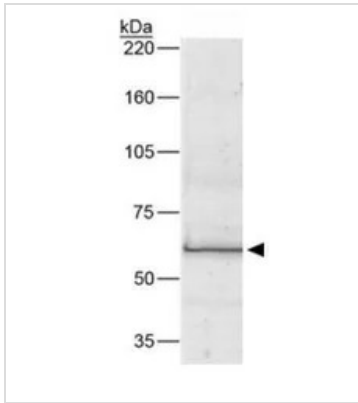
For full product information, images and publications, please visit our [website](#).

For laboratory research use only. Not for any clinical, therapeutic, or diagnostic use in humans or animals. Not for animal or human consumption.

Note

Purchasers shall not, and agree not to enable third parties to, analyze, copy, reverse engineer or otherwise attempt to determine the structure or sequence of the product.

DATA IMAGES

**GTX30219 WB Image**

WB analysis of human RPE cell lysate using GTX30219 Bestrophin antibody[E6-6].



For full product information, images and publications, please visit our [website](#).