

# GluR1 (phospho Ser845) antibody

**Cat. No. GTX30221**

<b>Host</b>	Rabbit
<b>Clonality</b>	Polyclonal
<b>Isotype</b>	IgG
<b>Applications</b>	WB, ICC/IF, IHC
<b>Reactivity</b>	Rat

**Package**  
150 µl

## Applications

### Application Note

Optimal working dilutions should be determined experimentally by the end user.

**Calculated MW** 102 kDa. ( [Note](#) )

## Properties

<b>Form</b>	Liquid
<b>Buffer</b>	10mM HEPES, 150mM NaCl, 0.01% BSA, 50% Glycerol
<b>Preservative</b>	No preservatives
<b>Storage</b>	Store as concentrated solution. Centrifuge briefly prior to opening vial. For short-term storage (1-2 weeks), store at 4°C. For long-term storage, aliquot and store at -20°C or below. Avoid multiple freeze-thaw cycles.
<b>Concentration</b>	Batch dependent (Please refer to the vial label for the specific concentration.)
<b>Immunogen</b>	Synthetic phospho-peptide corresponding to amino acid residues surrounding Ser845 conjugated to KLH
<b>Purification</b>	Affinity Purified
<b>Conjugation</b>	Unconjugated

### Note

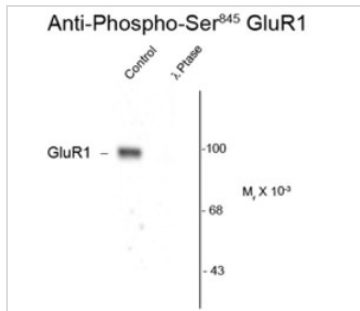
For laboratory research use only. Not for any clinical, therapeutic, or diagnostic use in humans or animals. Not for animal or human consumption.

Purchasers shall not, and agree not to enable third parties to, analyze, copy, reverse engineer or otherwise attempt to determine the structure or sequence of the product.



For full product information, images and publications, please visit our [website](#).

## DATA IMAGES



### GTX30221 WB Image

Western blot of rat hippocampal lysate showing specific immunolabeling of the ~100k GluR1 protein phosphorylated at Ser845 (Control). The phosphospecificity of this labeling is shown in the second lane (lambda-phosphatase: λ-Ptase). The blot is identical to the control except that the second lane (lambda-phosphatase: λ-Ptase). The blot is identical to the control except that it was incubated in λ-Ptase (1200 units for 30 min) before being exposed to the GluR1 Ser845 antibody (GTX30221). The immunolabeling is completely eliminated by treatment with λ-Ptase.



For full product information, images and publications, please visit our [website](#).