

Cyclin E1 antibody

Cat. No. GTX30234

Host	Rabbit
Clonality	Polyclonal
Isotype	IgG
Applications	WB, ELISA
Reactivity	Human

Package
100 µg

Applications

Application Note

Western blot & Use at 1:500 to 1:1,000 dilution. However, the investigator should determine the optimal dilution for a specific application such as immunohistochemistry.

Calculated MW 47 kDa. ([Note](#))

Product Note Reacts with residues 43-52 [GSQPWDNNAVC] of Cyclin E1.

Properties

Form	Liquid
Buffer	PBS
Preservative	0.02% Sodium azide
Storage	Store as concentrated solution. Centrifuge briefly prior to opening vial. For short-term storage (1-2 weeks), store at 4°C. For long-term storage, aliquot and store at -20°C or below. Avoid multiple freeze-thaw cycles.
Concentration	1 mg/ml (Please refer to the vial label for the specific concentration.)
Immunogen	Partial residue sequence of Cyclin E1.
Purification	Purified IgG
Conjugation	Unconjugated

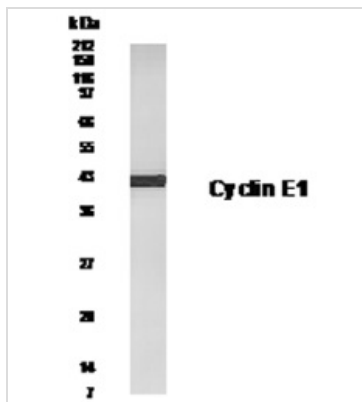
Note

For laboratory research use only. Not for any clinical, therapeutic, or diagnostic use in humans or animals. Not for animal or human consumption.

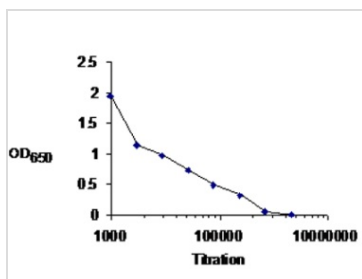
Purchasers shall not, and agree not to enable third parties to, analyze, copy, reverse engineer or otherwise attempt to determine the structure or sequence of the product.



For full product information, images and publications, please visit our [website](#).

DATA IMAGES

GTX30234 WB Image

Western blot analysis of Cyclin E1 in transfected 293T cells with anti-Cyclin E1 at a 1:500 dilution.


GTX30234 ELISA Image

Detection of Cyclin E1 using GTX30234 as the capture antibody in ELISA



For full product information, images and publications, please visit our [website](https://www.genetex.com).