

## Caspase 9 antibody [LAP6 96-2-22]

Cat. No. GTX30245

Host	Mouse
Clonality	Monoclonal
Isotype	IgG1
Applications	WB, ICC/IF, IHC-P
Reactivity	Human

Package  
200 µl

## Applications

## Application Note

\*Optimal dilutions/concentrations should be determined by the researcher.

Suggested dilution	Recommended dilution
WB	1:500 - 1:1000
ICC/IF	1:50 - 1:250
IHC-P	1:50 - 1:250

Not tested in other applications.

Calculated MW 46 kDa. ( [Note](#) )

## Properties

Form	Liquid
Buffer	Ascites
Preservative	0.1% Sodium azide
Storage	Store as concentrated solution. Centrifuge briefly prior to opening vial. For short-term storage (1-2 weeks), store at 4°C. For long-term storage, aliquot and store at -20°C or below. Avoid multiple freeze-thaw cycles.
Immunogen	Recombinant human Caspase 9 pro-domain protein. [UniProt# P55211]
Purification	Unpurified
Conjugation	Unconjugated

## Note

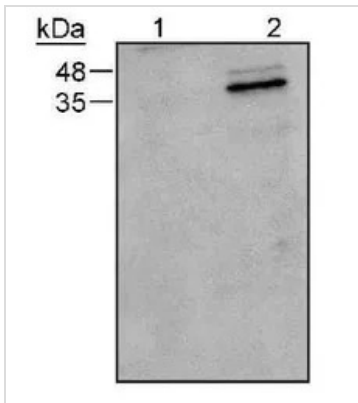
For laboratory research use only. Not for any clinical, therapeutic, or diagnostic use in humans or animals. Not for animal or human consumption.

Purchasers shall not, and agree not to enable third parties to, analyze, copy, reverse engineer or otherwise attempt to determine the structure or sequence of the product.



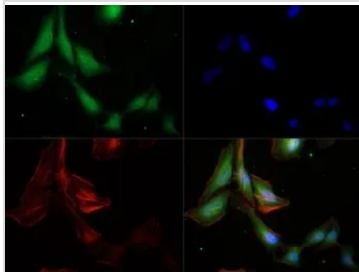
For full product information, images and publications, please visit our [website](#).

## DATA IMAGES



### GTx30245 WB Image

WB analysis of active 293 (lane 2) and inactive 293 cell lysate(lane 1) using GTx30245 Caspase 9 antibody [LAP6 96-2-22].



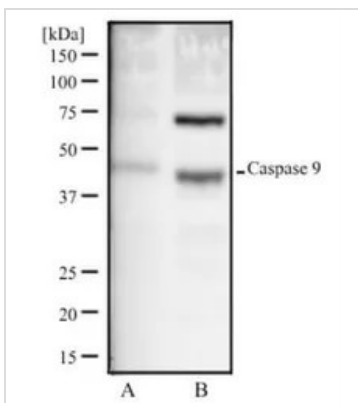
### GTx30245 ICC/IF Image

ICC/IF analysis of HeLa cells using GTx30245 Caspase 9 antibody [LAP6 96-2-22].

Green : primary antibody

Red : Tubulin

Blue : DAPI



### GTx30245 WB Image

WB analysis of Jurkat (A) and HeLa (B) cell lysate using GTx30245 Caspase 9 antibody [LAP6 96-2-22].

Dilution : 1 : 500



For full product information, images and publications, please visit our [website](#).